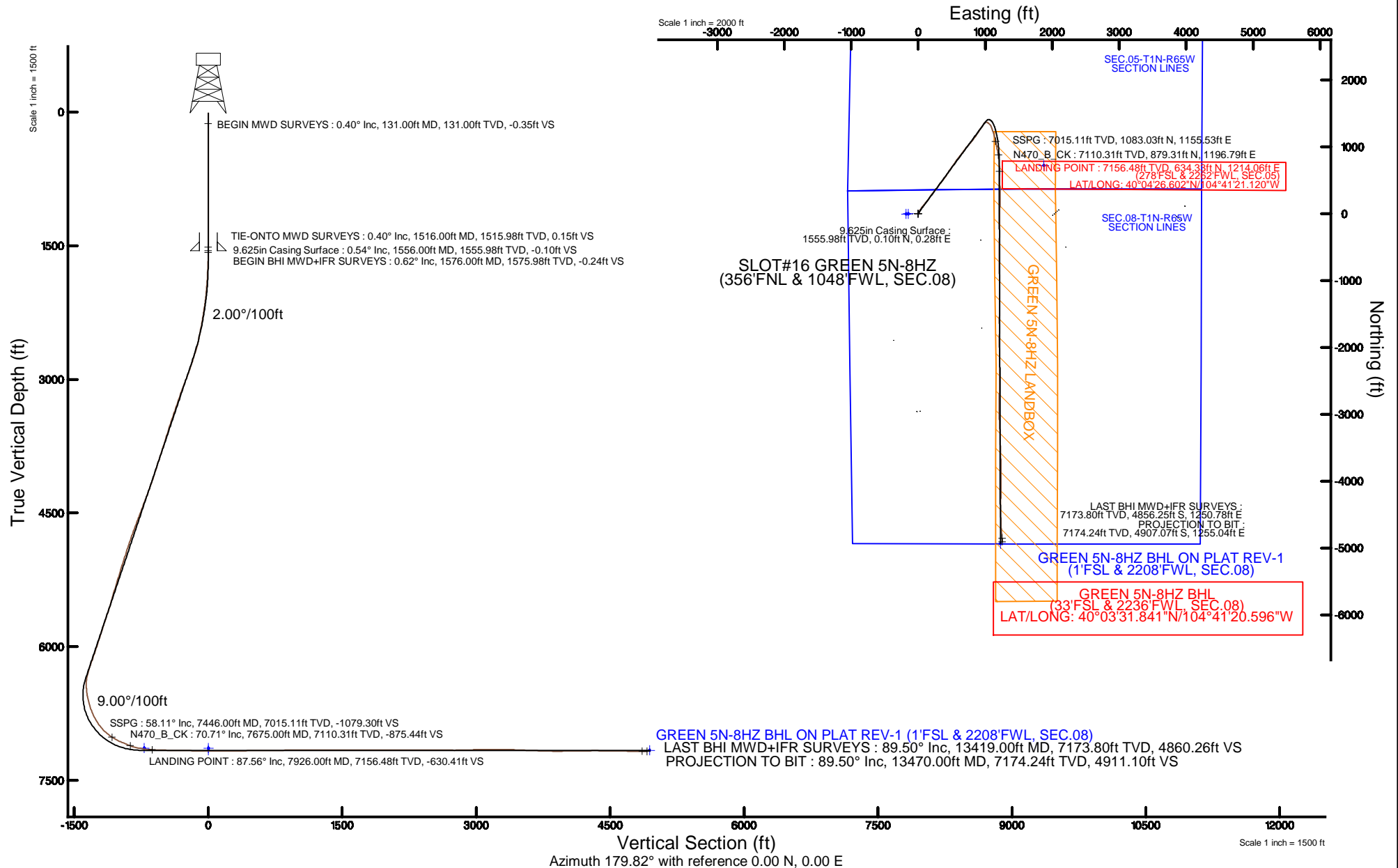


KERR-MCGEE OIL & GAS ONSHORE LP (WA)

Location: COLORADO Slot: SLOT#16 GREEN 5N-8HZ (356'FNL & 1048'FWL, SEC.08)
 Field: WELD COUNTY (UTM/TRUE NORTH) Well: GREEN 5N-8HZ
 Facility: SEC.08-T1N-R65W Wellbore: GREEN 5N-8HZ PWB

Plot reference wellpath is GREEN 5N-8HZ (REV-A.0) PWP

True vertical depths are referenced to XTREME 24 (16'KB) (RKB)	Grid System: NAD83 / UTM Zone 13 North, US feet
Measured depths are referenced to XTREME 24 (16'KB) (RKB)	North Reference: True north
XTREME 24 (16'KB) (RKB) to Mean Sea Level: 4987 feet	Scale: True distance
Mean Sea Level to Mud line (At Slot: SLOT#16 GREEN 5N-8HZ (356'FNL & 1048'FWL, SEC.08)): 0 feet	Depths are in feet
Coordinates are in feet referenced to Slot	Created by: amarcar on 01/Jun/2015



Actual Wellpath Report

GREEN 5N-8HZ AWP

Page 1 of 6

REFERENCE WELLPATH IDENTIFICATION

Operator	KERR-MCGEE OIL & GAS ONSHORE LP (WA)	Slot	SLOT#16 GREEN 5N-8HZ (356'FNL & 1048'FWL, SEC.08)
Area	COLORADO	Well	GREEN 5N-8HZ
Field	WELD COUNTY (UTM/TRUE NORTH)	Wellbore	GREEN 5N-8HZ AWB <13470>
Facility	SEC.08-T1N-R65W		

REPORT SETUP INFORMATION

Projection System	NAD83 / UTM Zone 13 North, US feet	Software System	WellArchitect® 4.0.0
North Reference	True	User	Amarcar
Scale	0.999608	Report Generated	01/Jun/2015 at 13:30
Convergence at slot	0.20° East	Database/Source file	KERR MCGEE UTM/GREEN_5N-8HZ_AWB__13470_.xml

WELLPATH LOCATION

	Local coordinates		Grid coordinates		Geographic coordinates	
	North[ft]	East[ft]	Easting[US ft]	Northing[US ft]	Latitude	Longitude
Slot Location	388.23	-3570.57	1726151.09	14553214.06	40°04'20.334"N	104°41'36.737"W
Facility Reference Pt			1729721.63	14552838.79	40°04'16.500"N	104°40'50.808"W
Field Reference Pt			1698235.31	14552047.82	40°04'09.600"N	104°47'36.000"W

WELLPATH DATUM

Calculation method	Minimum curvature	XTREME 24 (16'KB) (RKB) to Facility Vertical Datum	4987.00ft
Horizontal Reference Pt	Slot	XTREME 24 (16'KB) (RKB) to Mean Sea Level	4987.00ft
Vertical Reference Pt	XTREME 24 (16'KB) (RKB)	XTREME 24 (16'KB) (RKB) to Mud Line at Slot (SLOT#16 GREEN 5N-8HZ (356'FNL & 1048'FWL, SEC.08))	4987.00ft
MD Reference Pt	XTREME 24 (16'KB) (RKB)	Section Origin	N 0.00, E 0.00 ft
Field Vertical Reference	Mean Sea Level	Section Azimuth	179.82°

REFERENCE WELLPATH IDENTIFICATION

Operator	KERR-MCGEE OIL & GAS ONSHORE LP (WA)	Slot	SLOT#16 GREEN 5N-8HZ (356'FNL & 1048'FWL, SEC.08)
Area	COLORADO	Well	GREEN 5N-8HZ
Field	WELD COUNTY (UTM/TRUE NORTH)	Wellbore	GREEN 5N-8HZ AWP <13470>
Facility	SEC.08-T1N-R65W		

WELLPATH DATA (147 stations) † = interpolated/extrapolated station

MD [ft]	Inclination [°]	Azimuth [°]	TVD [ft]	Vert Sect [ft]	North [ft]	East [ft]	Latitude	Longitude	DLS [°/100ft]	Comments
0.00†	0.000	331.700	0.00	0.00	0.00	0.00	40°04'20.334"N	104°41'36.737"W	0.00	
16.00	0.000	331.700	16.00	0.00	0.00	0.00	40°04'20.334"N	104°41'36.737"W	0.00	
131.00	0.400	331.700	131.00	-0.35	0.35	-0.19	40°04'20.337"N	104°41'36.739"W	0.35	BEGIN MWD SURVEYS
208.00	0.100	228.600	208.00	-0.55	0.55	-0.37	40°04'20.339"N	104°41'36.742"W	0.56	
288.00	0.300	249.300	288.00	-0.43	0.43	-0.62	40°04'20.338"N	104°41'36.745"W	0.26	
368.00	0.100	278.300	368.00	-0.36	0.36	-0.88	40°04'20.338"N	104°41'36.748"W	0.27	
448.00	0.300	286.100	448.00	-0.43	0.43	-1.15	40°04'20.338"N	104°41'36.752"W	0.25	
528.00	0.700	201.600	527.99	-0.04	0.03	-1.53	40°04'20.334"N	104°41'36.757"W	0.92	
608.00	0.100	183.200	607.99	0.49	-0.49	-1.72	40°04'20.329"N	104°41'36.759"W	0.76	
688.00	0.100	166.000	687.99	0.62	-0.63	-1.70	40°04'20.328"N	104°41'36.759"W	0.04	
768.00	0.400	164.200	767.99	0.96	-0.96	-1.61	40°04'20.324"N	104°41'36.758"W	0.38	
848.00	0.300	185.000	847.99	1.44	-1.44	-1.55	40°04'20.320"N	104°41'36.757"W	0.20	
928.00	0.400	82.800	927.99	1.61	-1.62	-1.29	40°04'20.318"N	104°41'36.754"W	0.69	
1008.00	0.300	73.500	1007.99	1.52	-1.52	-0.82	40°04'20.319"N	104°41'36.748"W	0.14	
1088.00	0.300	7.400	1087.99	1.25	-1.25	-0.59	40°04'20.322"N	104°41'36.745"W	0.41	
1168.00	0.400	59.200	1167.99	0.90	-0.90	-0.32	40°04'20.325"N	104°41'36.741"W	0.40	
1248.00	0.500	66.600	1247.98	0.62	-0.62	0.24	40°04'20.328"N	104°41'36.734"W	0.14	
1328.00	0.300	85.700	1327.98	0.47	-0.47	0.77	40°04'20.329"N	104°41'36.727"W	0.30	
1408.00	0.100	328.600	1407.98	0.40	-0.39	0.94	40°04'20.330"N	104°41'36.725"W	0.45	
1488.00	0.400	285.500	1487.98	0.26	-0.26	0.63	40°04'20.331"N	104°41'36.729"W	0.42	
1516.00	0.400	327.500	1515.98	0.15	-0.15	0.49	40°04'20.333"N	104°41'36.731"W	1.02	TIE-ONTO MWD SURVEYS
1576.00	0.620	310.780	1575.98	-0.24	0.24	0.13	40°04'20.336"N	104°41'36.735"W	0.44	BEGIN BHI MWD+IFR SURVEYS
1671.00	1.710	25.130	1670.96	-1.86	1.86	0.34	40°04'20.352"N	104°41'36.733"W	1.74	
1765.00	3.260	31.080	1764.87	-5.41	5.42	2.32	40°04'20.388"N	104°41'36.707"W	1.67	
1861.00	4.530	34.060	1860.64	-10.88	10.90	5.85	40°04'20.442"N	104°41'36.662"W	1.34	
1955.00	5.580	37.560	1954.28	-17.56	17.59	10.72	40°04'20.508"N	104°41'36.599"W	1.16	
2050.00	6.410	27.110	2048.76	-25.93	25.98	15.95	40°04'20.591"N	104°41'36.532"W	1.44	
2145.00	8.320	24.010	2142.97	-36.91	36.98	21.16	40°04'20.699"N	104°41'36.465"W	2.05	
2240.00	9.910	23.280	2236.77	-50.68	50.77	27.19	40°04'20.836"N	104°41'36.387"W	1.68	
2334.00	11.090	29.520	2329.20	-65.95	66.06	34.84	40°04'20.987"N	104°41'36.289"W	1.74	
2429.00	12.380	35.670	2422.21	-82.14	82.29	45.28	40°04'21.147"N	104°41'36.155"W	1.89	
2524.00	14.890	37.240	2514.53	-100.09	100.28	58.61	40°04'21.325"N	104°41'35.983"W	2.67	
2618.00	18.470	39.340	2604.56	-121.18	121.42	75.36	40°04'21.534"N	104°41'35.768"W	3.86	
2713.00	20.700	39.910	2694.06	-145.63	145.94	95.68	40°04'21.776"N	104°41'35.506"W	2.36	
2808.00	22.850	38.880	2782.27	-172.80	173.18	118.03	40°04'22.045"N	104°41'35.219"W	2.30	
2903.00	23.640	37.680	2869.56	-202.16	202.62	141.25	40°04'22.336"N	104°41'34.920"W	0.97	
2998.00	24.090	34.080	2956.44	-233.22	233.75	163.76	40°04'22.644"N	104°41'34.631"W	1.60	
3092.00	25.330	34.790	3041.84	-265.55	266.15	185.98	40°04'22.964"N	104°41'34.345"W	1.36	
3187.00	24.470	38.360	3128.01	-297.59	298.27	209.79	40°04'23.282"N	104°41'34.038"W	1.82	
3282.00	24.170	39.410	3214.58	-327.97	328.73	234.35	40°04'23.583"N	104°41'33.722"W	0.55	
3377.00	24.000	40.680	3301.31	-357.57	358.41	259.29	40°04'23.876"N	104°41'33.402"W	0.57	
3472.00	22.750	36.380	3388.52	-386.94	387.85	282.78	40°04'24.167"N	104°41'33.099"W	2.23	
3567.00	22.810	36.000	3476.11	-416.55	417.54	304.50	40°04'24.460"N	104°41'32.820"W	0.17	
3662.00	21.640	36.400	3564.05	-445.48	446.53	325.72	40°04'24.747"N	104°41'32.547"W	1.24	
3757.00	20.630	36.560	3652.66	-472.96	474.08	346.08	40°04'25.019"N	104°41'32.285"W	1.06	

REFERENCE WELLPATH IDENTIFICATION			
Operator	KERR-MCGEE OIL & GAS ONSHORE LP (WA)	Slot	SLOT#16 GREEN 5N-8HZ (356°FNL & 1048°FWL, SEC.08)
Area	COLORADO	Well	GREEN 5N-8HZ
Field	WELD COUNTY (UTM/TRUE NORTH)	Wellbore	GREEN 5N-8HZ AWP <13470>
Facility	SEC.08-T1N-R65W		

WELLPATH DATA (147 stations) † = interpolated/extrapolated station										
MD [ft]	Inclination [°]	Azimuth [°]	TVD [ft]	Vert Sect [ft]	North [ft]	East [ft]	Latitude	Longitude	DLS [°/100ft]	Comments
3851.00	21.620	36.410	3740.34	-500.13	501.32	366.23	40°04'25.288"N	104°41'32.026"W	1.05	
3946.00	21.650	37.090	3828.65	-528.13	529.38	387.18	40°04'25.565"N	104°41'31.756"W	0.27	
4041.00	22.430	35.610	3916.70	-556.77	558.09	408.30	40°04'25.849"N	104°41'31.485"W	1.01	
4136.00	20.490	34.680	4005.11	-585.12	586.50	428.32	40°04'26.130"N	104°41'31.227"W	2.07	
4230.00	21.240	32.760	4092.95	-612.91	614.35	446.89	40°04'26.405"N	104°41'30.988"W	1.08	
4325.00	22.390	31.440	4181.15	-642.76	644.26	465.64	40°04'26.701"N	104°41'30.747"W	1.32	
4420.00	24.660	34.690	4268.25	-674.43	676.00	486.37	40°04'27.014"N	104°41'30.481"W	2.75	
4515.00	25.430	34.480	4354.31	-707.46	709.11	509.19	40°04'27.342"N	104°41'30.187"W	0.82	
4610.00	23.620	35.520	4440.74	-739.70	741.42	531.80	40°04'27.661"N	104°41'29.896"W	1.96	
4705.00	25.860	35.690	4527.02	-771.94	773.74	554.95	40°04'27.980"N	104°41'29.598"W	2.36	
4800.00	24.970	38.280	4612.82	-804.43	806.31	579.46	40°04'28.302"N	104°41'29.283"W	1.50	
4895.00	24.760	36.200	4699.02	-836.15	838.10	603.63	40°04'28.616"N	104°41'28.972"W	0.95	
4990.00	23.750	39.240	4785.64	-866.94	868.97	627.48	40°04'28.921"N	104°41'28.665"W	1.69	
5084.00	23.070	37.730	4871.90	-896.10	898.20	650.73	40°04'29.210"N	104°41'28.366"W	0.96	
5180.00	21.010	35.220	4960.88	-924.97	927.14	672.16	40°04'29.496"N	104°41'28.090"W	2.36	
5274.00	22.190	35.000	5048.28	-953.21	955.45	692.06	40°04'29.776"N	104°41'27.834"W	1.26	
5369.00	20.820	38.560	5136.67	-981.04	983.35	712.88	40°04'30.052"N	104°41'27.567"W	1.99	
5464.00	22.210	41.200	5225.05	-1007.68	1010.06	735.23	40°04'30.316"N	104°41'27.279"W	1.78	
5559.00	22.650	42.180	5312.86	-1034.67	1037.13	759.34	40°04'30.583"N	104°41'26.969"W	0.61	
5653.00	20.310	40.440	5400.33	-1060.43	1062.96	782.08	40°04'30.838"N	104°41'26.677"W	2.58	
5748.00	20.420	38.640	5489.39	-1085.85	1088.45	803.12	40°04'31.090"N	104°41'26.406"W	0.67	
5843.00	21.980	36.270	5577.96	-1113.07	1115.73	823.99	40°04'31.360"N	104°41'26.137"W	1.87	
5937.00	22.370	34.840	5665.01	-1141.87	1144.60	844.62	40°04'31.645"N	104°41'25.872"W	0.71	
6031.00	21.490	34.550	5752.20	-1170.66	1173.46	864.60	40°04'31.930"N	104°41'25.615"W	0.94	
6126.00	21.210	33.980	5840.68	-1199.18	1202.04	884.07	40°04'32.213"N	104°41'25.364"W	0.37	
6221.00	21.050	33.490	5929.30	-1227.60	1230.52	903.09	40°04'32.494"N	104°41'25.120"W	0.25	
6316.00	21.060	32.830	6017.95	-1256.11	1259.09	921.76	40°04'32.776"N	104°41'24.880"W	0.25	
6410.00	22.660	34.700	6105.19	-1285.13	1288.18	941.23	40°04'33.064"N	104°41'24.629"W	1.86	
6505.00	23.250	34.180	6192.67	-1315.62	1318.73	962.18	40°04'33.366"N	104°41'24.360"W	0.66	
6599.00	19.540	30.870	6280.18	-1344.41	1347.58	980.67	40°04'33.651"N	104°41'24.122"W	4.15	
6694.00	13.880	63.740	6371.33	-1363.09	1366.32	999.10	40°04'33.836"N	104°41'23.885"W	11.37	
6788.00	14.890	103.670	6462.60	-1365.15	1368.46	1021.00	40°04'33.857"N	104°41'23.603"W	10.40	
6883.00	17.420	125.470	6553.92	-1353.93	1357.31	1044.47	40°04'33.747"N	104°41'23.301"W	6.87	
6978.00	20.310	136.630	6643.84	-1333.61	1337.06	1067.38	40°04'33.547"N	104°41'23.006"W	4.85	
7073.00	24.430	154.590	6731.78	-1303.77	1307.28	1087.16	40°04'33.253"N	104°41'22.752"W	8.35	
7168.00	31.700	161.630	6815.57	-1262.21	1265.78	1103.49	40°04'32.842"N	104°41'22.542"W	8.40	
7263.00	39.110	161.950	6892.95	-1209.91	1213.53	1120.66	40°04'32.326"N	104°41'22.321"W	7.80	
7357.00	47.430	165.260	6961.34	-1148.07	1151.75	1138.69	40°04'31.716"N	104°41'22.089"W	9.17	
7446.00†	58.109	167.065	7015.11	-1079.30	1083.03	1155.53	40°04'31.036"N	104°41'21.872"W	12.11	SSPG
7452.00	58.830	167.170	7018.25	-1074.31	1078.05	1156.67	40°04'30.987"N	104°41'21.858"W	12.11	
7547.00	66.350	169.230	7061.96	-991.76	995.55	1173.86	40°04'30.172"N	104°41'21.637"W	8.15	
7641.00	68.100	168.170	7098.35	-906.72	910.57	1190.84	40°04'29.332"N	104°41'21.418"W	2.13	
7675.00†	70.707	170.263	7110.31	-875.44	879.31	1196.79	40°04'29.023"N	104°41'21.342"W	9.59	N470_B_CK
7736.00	75.440	173.860	7128.07	-817.64	821.53	1204.82	40°04'28.452"N	104°41'21.239"W	9.59	
7831.00	81.270	177.570	7147.24	-724.89	728.80	1211.74	40°04'27.536"N	104°41'21.150"W	7.23	

REFERENCE WELLPATH IDENTIFICATION

Operator	KERR-MCGEE OIL & GAS ONSHORE LP (WA)	Slot	SLOT#16 GREEN 5N-8HZ (356°FNL & 1048°FWL, SEC.08)
Area	COLORADO	Well	GREEN 5N-8HZ
Field	WELD COUNTY (UTM/TRUE NORTH)	Wellbore	GREEN 5N-8HZ AWP <13470>
Facility	SEC.08-T1N-R65W		

WELLPATH DATA (147 stations)

MD [ft]	Inclination [°]	Azimuth [°]	TVD [ft]	Vert Sect [ft]	North [ft]	East [ft]	Latitude	Longitude	DLS [°/100ft]	Comments
7926.00	87.560	179.610	7156.48	-630.41	634.33	1214.06	40°04'26.602"N	104°41'21.120"W	6.96	LANDING POINT
8021.00	88.210	179.200	7159.99	-535.48	539.40	1215.04	40°04'25.664"N	104°41'21.107"W	0.81	
8116.00	88.640	177.410	7162.60	-440.55	444.49	1217.85	40°04'24.726"N	104°41'21.071"W	1.94	
8211.00	89.750	179.480	7163.94	-345.60	349.54	1220.43	40°04'23.788"N	104°41'21.038"W	2.47	
8306.00	88.580	179.350	7165.32	-250.61	254.55	1221.40	40°04'22.849"N	104°41'21.026"W	1.24	
8400.00	88.830	181.670	7167.44	-156.65	160.59	1220.56	40°04'21.921"N	104°41'21.037"W	2.48	
8590.00	90.060	180.190	7169.28	33.30	-29.37	1217.48	40°04'20.043"N	104°41'21.076"W	1.01	
8685.00	89.470	181.400	7169.67	128.28	-124.36	1216.16	40°04'19.105"N	104°41'21.093"W	1.42	
8780.00	90.980	180.910	7169.30	223.25	-219.33	1214.25	40°04'18.166"N	104°41'21.118"W	1.67	
8875.00	90.270	180.590	7168.27	318.23	-314.32	1213.00	40°04'17.228"N	104°41'21.134"W	0.82	
8970.00	91.410	181.130	7166.87	413.21	-409.30	1211.58	40°04'16.289"N	104°41'21.152"W	1.33	
9065.00	89.900	180.170	7165.79	508.19	-504.28	1210.50	40°04'15.350"N	104°41'21.166"W	1.88	
9160.00	90.550	181.480	7165.41	603.17	-599.27	1209.13	40°04'14.412"N	104°41'21.184"W	1.54	
9255.00	90.580	179.110	7164.48	698.15	-694.25	1208.64	40°04'13.473"N	104°41'21.190"W	2.49	
9444.00	92.000	178.850	7160.22	887.08	-883.17	1212.01	40°04'11.606"N	104°41'21.147"W	0.76	
9539.00	90.670	178.920	7158.01	982.04	-978.13	1213.85	40°04'10.668"N	104°41'21.124"W	1.40	
9633.00	89.660	179.790	7157.74	1076.03	-1072.12	1214.91	40°04'09.739"N	104°41'21.110"W	1.42	
9728.00	90.490	180.080	7157.61	1171.03	-1167.12	1215.02	40°04'08.800"N	104°41'21.109"W	0.93	
9823.00	89.470	181.000	7157.65	1266.02	-1262.11	1214.13	40°04'07.861"N	104°41'21.120"W	1.45	
9917.00	89.960	180.230	7158.11	1360.01	-1356.10	1213.12	40°04'06.932"N	104°41'21.133"W	0.97	
10012.00	90.640	180.040	7157.62	1455.01	-1451.10	1212.89	40°04'05.994"N	104°41'21.136"W	0.74	
10106.00	90.000	180.760	7157.09	1549.00	-1545.09	1212.24	40°04'05.065"N	104°41'21.145"W	1.02	
10201.00	90.060	179.360	7157.04	1644.00	-1640.09	1212.14	40°04'04.126"N	104°41'21.146"W	1.48	
10296.00	88.890	180.220	7157.91	1738.99	-1735.09	1212.48	40°04'03.187"N	104°41'21.142"W	1.53	
10390.00	90.090	180.180	7158.75	1832.98	-1829.08	1212.16	40°04'02.258"N	104°41'21.146"W	1.28	
10486.00	90.030	180.170	7158.65	1928.98	-1925.08	1211.86	40°04'01.310"N	104°41'21.150"W	0.06	
10580.00	89.380	178.850	7159.13	2022.98	-2019.07	1212.67	40°04'00.381"N	104°41'21.139"W	1.57	
10675.00	90.670	178.650	7159.09	2117.96	-2114.05	1214.74	40°03'59.442"N	104°41'21.113"W	1.37	
10770.00	89.750	179.330	7158.74	2212.95	-2209.03	1216.41	40°03'58.504"N	104°41'21.091"W	1.20	
10865.00	90.400	180.370	7158.62	2307.94	-2304.03	1216.66	40°03'57.565"N	104°41'21.088"W	1.29	
10959.00	91.140	180.670	7157.36	2401.93	-2398.01	1215.81	40°03'56.636"N	104°41'21.099"W	0.85	
11055.00	88.520	180.330	7157.64	2497.91	-2494.00	1214.97	40°03'55.687"N	104°41'21.110"W	2.75	
11149.00	89.410	180.600	7159.34	2591.89	-2587.98	1214.21	40°03'54.759"N	104°41'21.120"W	0.99	
11244.00	88.670	181.410	7160.93	2686.85	-2682.95	1212.54	40°03'53.820"N	104°41'21.141"W	1.15	
11339.00	90.430	181.850	7161.68	2781.80	-2777.91	1209.84	40°03'52.882"N	104°41'21.176"W	1.91	
11434.00	91.720	179.860	7159.89	2876.76	-2872.87	1208.42	40°03'51.943"N	104°41'21.195"W	2.50	
11529.00	92.180	179.120	7156.66	2971.70	-2967.81	1209.27	40°03'51.005"N	104°41'21.184"W	0.92	
11624.00	89.530	177.950	7155.24	3066.66	-3062.76	1211.70	40°03'50.067"N	104°41'21.153"W	3.05	
11718.00	90.360	177.140	7155.33	3160.58	-3156.67	1215.72	40°03'49.139"N	104°41'21.101"W	1.23	
11813.00	89.590	177.820	7155.37	3255.50	-3251.58	1219.90	40°03'48.201"N	104°41'21.047"W	1.08	
11908.00	90.120	178.340	7155.62	3350.46	-3346.53	1223.08	40°03'47.263"N	104°41'21.006"W	0.78	
12002.00	87.650	178.990	7157.44	3444.41	-3440.48	1225.27	40°03'46.334"N	104°41'20.978"W	2.72	
12097.00	87.990	178.260	7161.06	3539.32	-3535.38	1227.55	40°03'45.396"N	104°41'20.949"W	0.85	
12191.00	87.620	177.660	7164.66	3633.21	-3629.25	1230.89	40°03'44.469"N	104°41'20.906"W	0.75	
12286.00	87.650	178.750	7168.58	3728.09	-3724.12	1233.87	40°03'43.531"N	104°41'20.868"W	1.15	

REFERENCE WELLPATH IDENTIFICATION			
Operator	KERR-MCGEE OIL & GAS ONSHORE LP (WA)	Slot	SLOT#16 GREEN 5N-8HZ (356'FNL & 1048'FWL, SEC.08)
Area	COLORADO	Well	GREEN 5N-8HZ
Field	WELD COUNTY (UTM/TRUE NORTH)	Wellbore	GREEN 5N-8HZ AWB <13470>
Facility	SEC.08-T1N-R65W		

WELLPATH DATA (147 stations)										
MD [ft]	Inclination [°]	Azimuth [°]	TVD [ft]	Vert Sect [ft]	North [ft]	East [ft]	Latitude	Longitude	DLS [°/100ft]	Comments
12380.00	88.890	179.230	7171.42	3822.03	-3818.06	1235.52	40°03'42.603"N	104°41'20.847"W	1.41	
12476.00	90.300	178.980	7172.09	3918.02	-3914.04	1237.02	40°03'41.654"N	104°41'20.827"W	1.49	
12570.00	90.760	180.940	7171.23	4012.01	-4008.04	1237.09	40°03'40.725"N	104°41'20.827"W	2.14	
12666.00	91.070	180.670	7169.69	4107.98	-4104.01	1235.74	40°03'39.777"N	104°41'20.844"W	0.43	
12760.00	91.160	181.800	7167.86	4201.93	-4197.97	1233.71	40°03'38.848"N	104°41'20.870"W	1.21	
12855.00	90.400	180.730	7166.57	4296.89	-4292.94	1231.62	40°03'37.910"N	104°41'20.897"W	1.38	
12950.00	88.980	180.220	7167.08	4391.88	-4387.93	1230.83	40°03'36.971"N	104°41'20.907"W	1.59	
13044.00	88.760	179.330	7168.94	4485.86	-4481.91	1231.20	40°03'36.043"N	104°41'20.903"W	0.98	
13138.00	89.500	178.710	7170.36	4579.84	-4575.89	1232.81	40°03'35.114"N	104°41'20.882"W	1.03	
13233.00	89.100	176.270	7171.53	4674.75	-4670.78	1236.97	40°03'34.176"N	104°41'20.829"W	2.60	
13419.00	89.500	175.210	7173.80	4860.26	-4856.25	1250.78	40°03'32.343"N	104°41'20.651"W	0.61	LAST BHI MWD+IFR SURVEYS
13470.00	89.500	175.210	7174.24	4911.10	-4907.07	1255.04	40°03'31.841"N	104°41'20.596"W	0.00	PROJECTION TO BIT

HOLE & CASING SECTIONS - Ref Wellbore: GREEN 5N-8HZ AWB <13470> Ref Wellpath: GREEN 5N-8HZ AWP									
String/Diameter	Start MD [ft]	End MD [ft]	Interval [ft]	Start TVD [ft]	End TVD [ft]	Start N/S [ft]	Start E/W [ft]	End N/S [ft]	End E/W [ft]
13.5in Open Hole	16.00	1566.00	1550.00	16.00	1565.98	0.00	0.00	0.17	0.21
9.625in Casing Surface	16.00	1556.00	1540.00	16.00	1555.98	0.00	0.00	0.10	0.28
7.875in Open Hole	1566.00	13470.00	11904.00	1565.98	7174.24	0.17	0.21	-4907.07	1255.04

TARGETS								
Name	TVD [ft]	North [ft]	East [ft]	Grid East [US ft]	Grid North [US ft]	Latitude	Longitude	Shape
SEC.05-T1N-R65W SECTION LINES	7137.00	722.08	1875.37	1728023.23	14553942.30	40°04'27.469"N	104°41'12.613"W	polygon
SEC.08-T1N-R65W SECTION LINES	7137.00	-3.24	-179.66	1725971.51	14553210.20	40°04'20.302"N	104°41'39.048"W	polygon
GREEN 5N-8HZ BHL ON PLAT REV-1 (1'FSL & 2208'FWL, SEC.08)	7162.00	-4938.64	1227.46	1727395.06	14548281.61	40°03'31.529"N	104°41'20.951"W	point
GREEN 5N-8HZ LANDBOX	7162.00	-2.53	-149.73	1726001.43	14553211.01	40°04'20.309"N	104°41'38.663"W	polygon

WELLPATH COMPOSITION - Ref Wellbore: GREEN 5N-8HZ AWB <13470> Ref Wellpath: GREEN 5N-8HZ AWP				
Start MD [ft]	End MD [ft]	Positional Uncertainty Model	Log Name/Comment	Wellbore
16.00	1516.00	Custom APC ISCWSA REV 2 MWD	CATHEDRAL MWD SURVEYS 13.5" <131-1516>	GREEN 5N-8HZ AWB <13470>
1516.00	13419.00	Custom APC ISCWSA REV 2 MWD+IFR1+SC (approximation)	BHI MWD+IFR SURVEYS 7.875" <1576-13419>	GREEN 5N-8HZ AWB <13470>
13419.00	13470.00	Blind Drilling (std)	Projection to bit	GREEN 5N-8HZ AWB <13470>

REFERENCE WELLPATH IDENTIFICATION			
Operator	KERR-MCGEE OIL & GAS ONSHORE LP (WA)	Slot	SLOT#16 GREEN 5N-8HZ (356'FNL & 1048'FWL, SEC.08)
Area	COLORADO	Well	GREEN 5N-8HZ
Field	WELD COUNTY (UTM/TRUE NORTH)	Wellbore	GREEN 5N-8HZ AWB <13470>
Facility	SEC.08-T1N-R65W		

WELLPATH COMMENTS					
MD [ft]	Inclination [°]	Azimuth [°]	TVD [ft]	Comment	
131.00	0.400	331.700	131.00	BEGIN MWD SURVEYS	
1516.00	0.400	327.500	1515.98	TIE-ONTO MWD SURVEYS	
1576.00	0.620	310.780	1575.98	BEGIN BHI MWD+IFR SURVEYS	
7446.00	58.109	167.065	7015.11	SSPG	
7675.00	70.707	170.263	7110.31	N470_B_CK	
7926.00	87.560	179.610	7156.48	LANDING POINT	
13419.00	89.500	175.210	7173.80	LAST BHI MWD+IFR SURVEYS	
13470.00	89.500	175.210	7174.24	PROJECTION TO BIT	