

Location:	COLORADO	Slot:	SLOT#04 VARRA #4(1667'FSL & 790'FWL,SEC.05)
Field:	WELD COUNTY (NAD83/TRUE NORTH)	Well:	VARRA #4
Facility:	SEC.05-T06N-R67W	Wellbore:	VARRA #4 PWB

Location:	COLORADO	Slot:	SLOT#04 VARRA #4(1667'FSL & 790'FWL,SEC.05)
Field:	WELD COUNTY (NAD83/TRUE NORTH)	Well:	VARRA #4
Facility:	SEC.05-T06N-R67W	Wellbore:	VARRA #4 PWB

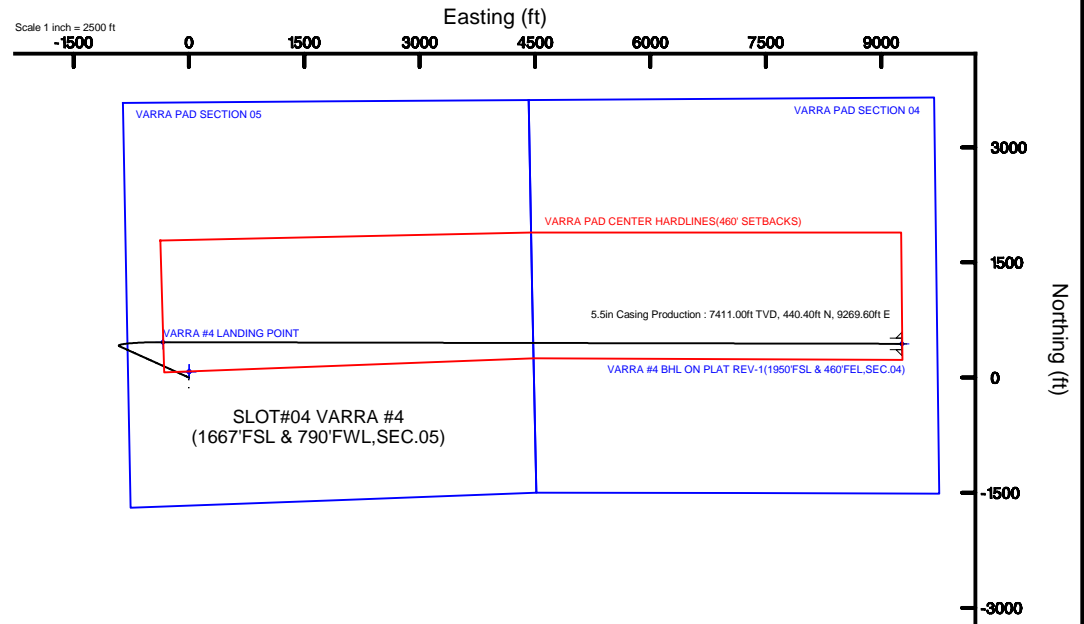
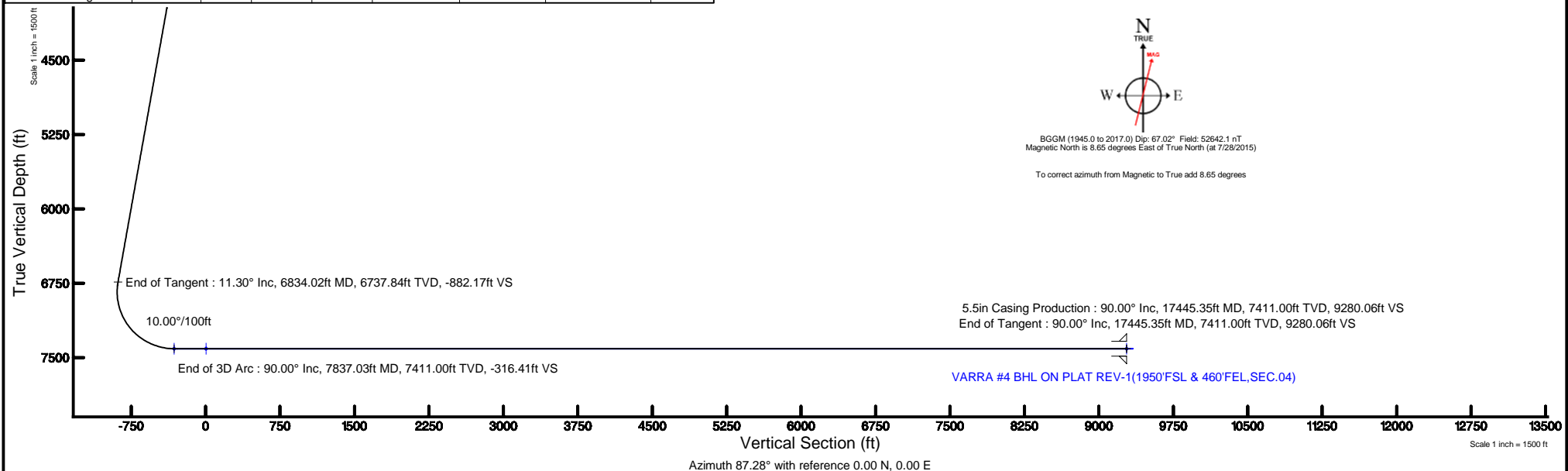
True vertical depths are referenced to SAVANNA 802 (15KB) (RKB)	Grid System: NAD83 / Lambert Colorado SP, Northern Zone (501), US feet
Measured depths are referenced to SAVANNA 802 (15KB) (RKB)	North Reference: True north
SAVANNA 802 (15KB) (RKB) to Mean Sea Level: 4889 feet	Scale: True distance
Mean Sea Level to Mud line (At Slot: SLOT#04 VARRA #4(1667'FSL & 790'FWL,SEC.05)): 0 feet	Depths are in feet
Coordinates are in feet referenced to Slot	Created by: ingmjamm on 7/31/2015

Facility Name			Grid East (US ft)	Grid North (US ft)	Latitude	Longitude
SEC.05-T06N-R67W			3160186.786	1430380.222	40°30'48.118"N	104°55'25.957"W
Slot	Local N (ft)	Local E (ft)	Grid East (US ft)	Grid North (US ft)	Latitude	Longitude
SLOT#04 VARRA #4(1667FSL & 790FWLSEC.05)	-78.03	-0.54	3160186.753	1430302.198	40°30'47.347"N	104°55'25.964"W
SAVANNA 802 (15KB) (RKB) to Mud line (At Slot: SLOT#04 VARRA #4(1667FSL & 790FWLSEC.05))					4889ft	
Mean Sea Level to Mud line (At Slot: SLOT#04 VARRA #4(1667FSL & 790FWLSEC.05))					0ft	
SAVANNA 802 (15KB) (RKB) to Mean Sea Level					4889ft	

Name	MD (ft)	TVD (ft)	Local N (ft)	Local E (ft)	Grid East (US ft)	Grid North (US ft)	Latitude	Longitude
VARRA PAD SECTION 04		-9.00	77.98	0.53	3160196.77	1430380.18	40°30'48.118"N	104°52'25.967"W
VARRA PAD SECTION 05		-9.00	77.98	0.53	3160196.77	1430380.18	40°30'48.118"N	104°52'25.967"W
VARRA #4 BHA ON PLAT REV-11(9507'SL & 400'FEL,SEC.04)	17445.35	7411.00	440.40	9269.61	3169492.98	1430802.80	40°30'51.682"N	104°52'25.948"W
VARRA #4 LANDING POINT	7837.03	7411.00	461.62	-338.70	3169846.77	1430761.59	40°30'51.908"N	104°52'35.349"W
VARRA PAD CENTER HARDLINES(460' SETBACKS)		7411.00	77.98	0.53	3160196.77	1430380.18	40°30'48.118"N	104°52'25.967"W

Start MD (ft)	End MD (ft)	Tool	Model	Log Name/Comment	Wellbore
15.00	17445.35	NaviTrak	NaviTrak (Standard)		VARRA #4 PWB

Design Comment	MD (ft)	Inc (°)	Az (°)	TVD (ft)	Local N (ft)	Local E (ft)	DLS (°/100ft)	VS (ft)
Tie On	15.00	0.000	294.312	15.00	0.00	0.00	0.00	0.00
End of Tangent	1500.00	0.000	294.312	1500.00	0.00	0.00	0.00	0.00
End of Build	2065.22	11.304	294.312	2061.56	22.88	-50.65	2.00	-49.51
End of Tangent	6834.02	11.304	294.312	6737.84	407.73	-902.54	0.00	-882.17
End of 3D Arc	7837.03	90.000	90.126	7411.00	461.62	-338.70	10.00	-316.41
End of Tangent	17445.35	90.000	90.126	17411.00	440.40	9269.61	0.00	9280.00



BGGM (1945.0 to 2017.0) Dip: 67.02° Field: 52642.1 nT
Magnetic North is 8.65 degrees East of True North (at 7/28/2015)

To correct azimuth from Magnetic to True add 8.65 degrees



Planned Wellpath Report

VARRA #4 PWP (REV-B.0)

Page 1 of 10



REFERENCE WELLPATH IDENTIFICATION

Operator	EXTRACTION OIL & GAS	Slot	SLOT#04 VARRA #4(1667'FSL & 790'FWL,SEC.05)
Area	COLORADO	Well	VARRA #4
Field	WELD COUNTY (NAD83/TRUE NORTH)	Wellbore	VARRA #4 PWB
Facility	SEC.05-T06N-R67W		

REPORT SETUP INFORMATION

Projection System	NAD83 / Lambert Colorado SP, Northern Zone (501), US feet	Software System	WellArchitect® 4.1.1
North Reference	True	User	Ingmjmr
Scale	0.999967	Report Generated	7/31/2015 at 3:34:40 PM
Convergence at slot	0.37° East	Database/Source file	Denver/VARRA_#4_PWB.xml

WELLPATH LOCATION

	Local coordinates		Grid coordinates		Geographic coordinates	
	North[ft]	East[ft]	Easting[US ft]	Northing[US ft]	Latitude	Longitude
Slot Location	-78.03	-0.54	3160186.75	1430302.20	40°30'47.347"N	104°55'25.964"W
Facility Reference Pt			3160186.79	1430380.22	40°30'48.118"N	104°55'25.957"W
Field Reference Pt			3185481.27	1419166.81	40°28'55.560"N	104°49'59.556"W

WELLPATH DATUM

Calculation method	Minimum curvature	SAVANNA 802 (15'KB) (RKB) to Facility Vertical Datum	4889.00ft
Horizontal Reference Pt	Slot	SAVANNA 802 (15'KB) (RKB) to Mean Sea Level	4889.00ft
Vertical Reference Pt	SAVANNA 802 (15'KB) (RKB)	SAVANNA 802 (15'KB) (RKB) to Mud Line at Slot (SLOT#04 VARRA #4(1667'FSL & 790'FWL,SEC.05))	4889.00ft
MD Reference Pt	SAVANNA 802 (15'KB) (RKB)	Section Origin	N 0.00, E 0.00 ft
Field Vertical Reference	Mean Sea Level	Section Azimuth	87.28°



Planned Wellpath Report

VARRA #4 PWP (REV-B.0)

Page 2 of 10



REFERENCE WELLPATH IDENTIFICATION

Operator	EXTRACTION OIL & GAS	Slot	SLOT#04 VARRA #4(1667'FSL & 790'FWL,SEC.05)
Area	COLORADO	Well	VARRA #4
Field	WELD COUNTY (NAD83/TRUE NORTH)	Wellbore	VARRA #4 PWB
Facility	SEC.05-T06N-R67W		

WELLPATH DATA (181 stations) † = interpolated/extrapolated station

MD [ft]	Inclination [°]	Azimuth [°]	TVD [ft]	Vert Sect [ft]	North [ft]	East [ft]	DLS [°/100ft]	Comments
0.00†	0.000	294.312	0.00	0.00	0.00	0.00	0.00	
15.00	0.000	294.312	15.00	0.00	0.00	0.00	0.00	Tie On
115.00†	0.000	294.312	115.00	0.00	0.00	0.00	0.00	
215.00†	0.000	294.312	215.00	0.00	0.00	0.00	0.00	
315.00†	0.000	294.312	315.00	0.00	0.00	0.00	0.00	
415.00†	0.000	294.312	415.00	0.00	0.00	0.00	0.00	
515.00†	0.000	294.312	515.00	0.00	0.00	0.00	0.00	
615.00†	0.000	294.312	615.00	0.00	0.00	0.00	0.00	
715.00†	0.000	294.312	715.00	0.00	0.00	0.00	0.00	
815.00†	0.000	294.312	815.00	0.00	0.00	0.00	0.00	
915.00†	0.000	294.312	915.00	0.00	0.00	0.00	0.00	
1015.00†	0.000	294.312	1015.00	0.00	0.00	0.00	0.00	
1115.00†	0.000	294.312	1115.00	0.00	0.00	0.00	0.00	
1215.00†	0.000	294.312	1215.00	0.00	0.00	0.00	0.00	
1315.00†	0.000	294.312	1315.00	0.00	0.00	0.00	0.00	
1415.00†	0.000	294.312	1415.00	0.00	0.00	0.00	0.00	
1500.00	0.000	294.312	1500.00	0.00	0.00	0.00	0.00	End of Tangent
1515.00†	0.300	294.312	1515.00	-0.03	0.02	-0.04	2.00	
1615.00†	2.300	294.312	1614.97	-2.06	0.95	-2.10	2.00	
1715.00†	4.300	294.312	1714.80	-7.18	3.32	-7.35	2.00	
1815.00†	6.300	294.312	1814.37	-15.41	7.12	-15.77	2.00	
1915.00†	8.300	294.312	1913.55	-26.73	12.35	-27.35	2.00	
2015.00†	10.300	294.312	2012.23	-41.12	19.01	-42.07	2.00	
2065.22	11.304	294.312	2061.56	-49.51	22.88	-50.65	2.00	End of Build
2115.00†	11.304	294.312	2110.37	-58.20	26.90	-59.54	0.00	
2215.00†	11.304	294.312	2208.43	-75.66	34.97	-77.41	0.00	
2315.00†	11.304	294.312	2306.49	-93.12	43.04	-95.27	0.00	
2415.00†	11.304	294.312	2404.55	-110.58	51.11	-113.13	0.00	
2515.00†	11.304	294.312	2502.61	-128.04	59.18	-131.00	0.00	
2615.00†	11.304	294.312	2600.67	-145.50	67.25	-148.86	0.00	



Planned Wellpath Report

VARRA #4 PWP (REV-B.0)

Page 3 of 10



REFERENCE WELLPATH IDENTIFICATION

Operator	EXTRACTION OIL & GAS	Slot	SLOT#04 VARRA #4(1667'FSL & 790'FWL,SEC.05)
Area	COLORADO	Well	VARRA #4
Field	WELD COUNTY (NAD83/TRUE NORTH)	Wellbore	VARRA #4 PWB
Facility	SEC.05-T06N-R67W		

WELLPATH DATA (181 stations) † = interpolated/extrapolated station

MD [ft]	Inclination [°]	Azimuth [°]	TVD [ft]	Vert Sect [ft]	North [ft]	East [ft]	DLS [°/100ft]	Comments
2715.00†	11.304	294.312	2698.73	-162.96	75.32	-166.72	0.00	
2815.00†	11.304	294.312	2796.79	-180.42	83.39	-184.59	0.00	
2915.00†	11.304	294.312	2894.85	-197.88	91.46	-202.45	0.00	
3015.00†	11.304	294.312	2992.91	-215.34	99.53	-220.32	0.00	
3115.00†	11.304	294.312	3090.97	-232.81	107.60	-238.18	0.00	
3215.00†	11.304	294.312	3189.03	-250.27	115.67	-256.04	0.00	
3315.00†	11.304	294.312	3287.09	-267.73	123.74	-273.91	0.00	
3415.00†	11.304	294.312	3385.15	-285.19	131.81	-291.77	0.00	
3515.00†	11.304	294.312	3483.21	-302.65	139.88	-309.64	0.00	
3615.00†	11.304	294.312	3581.27	-320.11	147.95	-327.50	0.00	
3715.00†	11.304	294.312	3679.33	-337.57	156.02	-345.36	0.00	
3815.00†	11.304	294.312	3777.39	-355.03	164.09	-363.23	0.00	
3915.00†	11.304	294.312	3875.45	-372.49	172.16	-381.09	0.00	
4015.00†	11.304	294.312	3973.51	-389.95	180.23	-398.95	0.00	
4115.00†	11.304	294.312	4071.57	-407.41	188.30	-416.82	0.00	
4215.00†	11.304	294.312	4169.63	-424.87	196.37	-434.68	0.00	
4315.00†	11.304	294.312	4267.69	-442.33	204.44	-452.55	0.00	
4415.00†	11.304	294.312	4365.75	-459.79	212.51	-470.41	0.00	
4515.00†	11.304	294.312	4463.81	-477.26	220.58	-488.27	0.00	
4615.00†	11.304	294.312	4561.87	-494.72	228.65	-506.14	0.00	
4715.00†	11.304	294.312	4659.93	-512.18	236.72	-524.00	0.00	
4815.00†	11.304	294.312	4757.99	-529.64	244.79	-541.87	0.00	
4915.00†	11.304	294.312	4856.05	-547.10	252.86	-559.73	0.00	
5015.00†	11.304	294.312	4954.11	-564.56	260.93	-577.59	0.00	
5115.00†	11.304	294.312	5052.17	-582.02	269.00	-595.46	0.00	
5215.00†	11.304	294.312	5150.23	-599.48	277.07	-613.32	0.00	
5315.00†	11.304	294.312	5248.29	-616.94	285.14	-631.18	0.00	
5415.00†	11.304	294.312	5346.35	-634.40	293.21	-649.05	0.00	
5515.00†	11.304	294.312	5444.41	-651.86	301.28	-666.91	0.00	
5615.00†	11.304	294.312	5542.47	-669.32	309.35	-684.78	0.00	



Planned Wellpath Report

VARRA #4 PWP (REV-B.0)

Page 4 of 10



REFERENCE WELLPATH IDENTIFICATION

Operator	EXTRACTION OIL & GAS	Slot	SLOT#04 VARRA #4(1667'FSL & 790'FWL,SEC.05)
Area	COLORADO	Well	VARRA #4
Field	WELD COUNTY (NAD83/TRUE NORTH)	Wellbore	VARRA #4 PWB
Facility	SEC.05-T06N-R67W		

WELLPATH DATA (181 stations) † = interpolated/extrapolated station

MD [ft]	Inclination [°]	Azimuth [°]	TVD [ft]	Vert Sect [ft]	North [ft]	East [ft]	DLS [°/100ft]	Comments
5715.00†	11.304	294.312	5640.53	-686.78	317.42	-702.64	0.00	
5815.00†	11.304	294.312	5738.59	-704.24	325.49	-720.50	0.00	
5915.00†	11.304	294.312	5836.65	-721.71	333.56	-738.37	0.00	
6015.00†	11.304	294.312	5934.71	-739.17	341.63	-756.23	0.00	
6115.00†	11.304	294.312	6032.77	-756.63	349.71	-774.10	0.00	
6215.00†	11.304	294.312	6130.83	-774.09	357.78	-791.96	0.00	
6315.00†	11.304	294.312	6228.89	-791.55	365.85	-809.82	0.00	
6415.00†	11.304	294.312	6326.95	-809.01	373.92	-827.69	0.00	
6515.00†	11.304	294.312	6425.01	-826.47	381.99	-845.55	0.00	
6615.00†	11.304	294.312	6523.07	-843.93	390.06	-863.41	0.00	
6715.00†	11.304	294.312	6621.13	-861.39	398.13	-881.28	0.00	
6815.00†	11.304	294.312	6719.19	-878.85	406.20	-899.14	0.00	
6834.02	11.304	294.312	6737.84	-882.17	407.73	-902.54	0.00	End of Tangent
6915.00†	5.173	334.896	6818.01	-890.65	414.32	-911.34	10.00	
7015.00†	9.088	59.329	6917.43	-885.37	422.45	-906.44	10.00	
7115.00†	18.384	75.861	7014.50	-862.88	430.35	-884.30	10.00	
7215.00†	28.158	81.325	7106.26	-823.86	437.78	-845.59	10.00	
7315.00†	38.043	84.119	7189.93	-769.49	444.51	-791.48	10.00	
7415.00†	47.971	85.893	7262.97	-701.42	450.34	-723.61	10.00	
7515.00†	57.918	87.184	7323.16	-621.73	455.10	-644.05	10.00	
7615.00†	67.875	88.218	7368.66	-532.82	458.63	-555.21	10.00	
7715.00†	77.839	89.115	7398.10	-437.42	460.83	-459.80	10.00	
7815.00†	87.805	89.947	7410.58	-338.40	461.63	-360.72	10.00	
7837.03	90.000	90.126	7411.00 [†]	-316.41	461.62	-338.70	10.00	End of 3D Arc
7915.00†	90.000	90.126	7411.00	-238.53	461.44	-260.72	0.00	
8015.00†	90.000	90.126	7411.00	-138.65	461.22	-160.72	0.00	
8115.00†	90.000	90.126	7411.00	-38.78	461.00	-60.72	0.00	
8215.00†	90.000	90.126	7411.00	61.10	460.78	39.28	0.00	
8315.00†	90.000	90.126	7411.00	160.98	460.56	139.28	0.00	
8415.00†	90.000	90.126	7411.00	260.85	460.34	239.28	0.00	



Planned Wellpath Report

VARRA #4 PWP (REV-B.0)

Page 5 of 10



REFERENCE WELLPATH IDENTIFICATION

Operator	EXTRACTION OIL & GAS	Slot	SLOT#04 VARRA #4(1667'FSL & 790'FWL,SEC.05)
Area	COLORADO	Well	VARRA #4
Field	WELD COUNTY (NAD83/TRUE NORTH)	Wellbore	VARRA #4 PWB
Facility	SEC.05-T06N-R67W		

WELLPATH DATA (181 stations) † = interpolated/extrapolated station

MD [ft]	Inclination [°]	Azimuth [°]	TVD [ft]	Vert Sect [ft]	North [ft]	East [ft]	DLS [°/100ft]	Comments
8515.00†	90.000	90.126	7411.00	360.73	460.12	339.28	0.00	
8615.00†	90.000	90.126	7411.00	460.61	459.90	439.28	0.00	
8715.00†	90.000	90.126	7411.00	560.48	459.68	539.28	0.00	
8815.00†	90.000	90.126	7411.00	660.36	459.46	639.28	0.00	
8915.00†	90.000	90.126	7411.00	760.24	459.24	739.28	0.00	
9015.00†	90.000	90.126	7411.00	860.11	459.01	839.28	0.00	
9115.00†	90.000	90.126	7411.00	959.99	458.79	939.27	0.00	
9215.00†	90.000	90.126	7411.00	1059.87	458.57	1039.27	0.00	
9315.00†	90.000	90.126	7411.00	1159.74	458.35	1139.27	0.00	
9415.00†	90.000	90.126	7411.00	1259.62	458.13	1239.27	0.00	
9515.00†	90.000	90.126	7411.00	1359.50	457.91	1339.27	0.00	
9615.00†	90.000	90.126	7411.00	1459.37	457.69	1439.27	0.00	
9715.00†	90.000	90.126	7411.00	1559.25	457.47	1539.27	0.00	
9815.00†	90.000	90.126	7411.00	1659.13	457.25	1639.27	0.00	
9915.00†	90.000	90.126	7411.00	1759.00	457.03	1739.27	0.00	
10015.00†	90.000	90.126	7411.00	1858.88	456.81	1839.27	0.00	
10115.00†	90.000	90.126	7411.00	1958.76	456.59	1939.27	0.00	
10215.00†	90.000	90.126	7411.00	2058.63	456.37	2039.27	0.00	
10315.00†	90.000	90.126	7411.00	2158.51	456.14	2139.27	0.00	
10415.00†	90.000	90.126	7411.00	2258.39	455.92	2239.27	0.00	
10515.00†	90.000	90.126	7411.00	2358.26	455.70	2339.27	0.00	
10615.00†	90.000	90.126	7411.00	2458.14	455.48	2439.27	0.00	
10715.00†	90.000	90.126	7411.00	2558.02	455.26	2539.27	0.00	
10815.00†	90.000	90.126	7411.00	2657.89	455.04	2639.27	0.00	
10915.00†	90.000	90.126	7411.00	2757.77	454.82	2739.27	0.00	
11015.00†	90.000	90.126	7411.00	2857.65	454.60	2839.27	0.00	
11115.00†	90.000	90.126	7411.00	2957.52	454.38	2939.27	0.00	
11215.00†	90.000	90.126	7411.00	3057.40	454.16	3039.27	0.00	
11315.00†	90.000	90.126	7411.00	3157.27	453.94	3139.27	0.00	
11415.00†	90.000	90.126	7411.00	3257.15	453.72	3239.27	0.00	



Planned Wellpath Report

VARRA #4 PWP (REV-B.0)

Page 6 of 10



REFERENCE WELLPATH IDENTIFICATION

Operator	EXTRACTION OIL & GAS	Slot	SLOT#04 VARRA #4(1667'FSL & 790'FWL,SEC.05)
Area	COLORADO	Well	VARRA #4
Field	WELD COUNTY (NAD83/TRUE NORTH)	Wellbore	VARRA #4 PWB
Facility	SEC.05-T06N-R67W		

WELLPATH DATA (181 stations) † = interpolated/extrapolated station

MD [ft]	Inclination [°]	Azimuth [°]	TVD [ft]	Vert Sect [ft]	North [ft]	East [ft]	DLS [°/100ft]	Comments
11515.00†	90.000	90.126	7411.00	3357.03	453.50	3339.27	0.00	
11615.00†	90.000	90.126	7411.00	3456.90	453.27	3439.27	0.00	
11715.00†	90.000	90.126	7411.00	3556.78	453.05	3539.27	0.00	
11815.00†	90.000	90.126	7411.00	3656.66	452.83	3639.27	0.00	
11915.00†	90.000	90.126	7411.00	3756.53	452.61	3739.27	0.00	
12015.00†	90.000	90.126	7411.00	3856.41	452.39	3839.27	0.00	
12115.00†	90.000	90.126	7411.00	3956.29	452.17	3939.27	0.00	
12215.00†	90.000	90.126	7411.00	4056.16	451.95	4039.27	0.00	
12315.00†	90.000	90.126	7411.00	4156.04	451.73	4139.27	0.00	
12415.00†	90.000	90.126	7411.00	4255.92	451.51	4239.27	0.00	
12515.00†	90.000	90.126	7411.00	4355.79	451.29	4339.27	0.00	
12615.00†	90.000	90.126	7411.00	4455.67	451.07	4439.27	0.00	
12715.00†	90.000	90.126	7411.00	4555.55	450.85	4539.27	0.00	
12815.00†	90.000	90.126	7411.00	4655.42	450.63	4639.27	0.00	
12915.00†	90.000	90.126	7411.00	4755.30	450.40	4739.27	0.00	
13015.00†	90.000	90.126	7411.00	4855.18	450.18	4839.27	0.00	
13115.00†	90.000	90.126	7411.00	4955.05	449.96	4939.27	0.00	
13215.00†	90.000	90.126	7411.00	5054.93	449.74	5039.26	0.00	
13315.00†	90.000	90.126	7411.00	5154.81	449.52	5139.26	0.00	
13415.00†	90.000	90.126	7411.00	5254.68	449.30	5239.26	0.00	
13515.00†	90.000	90.126	7411.00	5354.56	449.08	5339.26	0.00	
13615.00†	90.000	90.126	7411.00	5454.44	448.86	5439.26	0.00	
13715.00†	90.000	90.126	7411.00	5554.31	448.64	5539.26	0.00	
13815.00†	90.000	90.126	7411.00	5654.19	448.42	5639.26	0.00	
13915.00†	90.000	90.126	7411.00	5754.07	448.20	5739.26	0.00	
14015.00†	90.000	90.126	7411.00	5853.94	447.98	5839.26	0.00	
14115.00†	90.000	90.126	7411.00	5953.82	447.76	5939.26	0.00	
14215.00†	90.000	90.126	7411.00	6053.70	447.53	6039.26	0.00	
14315.00†	90.000	90.126	7411.00	6153.57	447.31	6139.26	0.00	
14415.00†	90.000	90.126	7411.00	6253.45	447.09	6239.26	0.00	



Planned Wellpath Report

VARRA #4 PWP (REV-B.0)

Page 7 of 10



REFERENCE WELLPATH IDENTIFICATION

Operator	EXTRACTION OIL & GAS	Slot	SLOT#04 VARRA #4(1667'FSL & 790'FWL,SEC.05)
Area	COLORADO	Well	VARRA #4
Field	WELD COUNTY (NAD83/TRUE NORTH)	Wellbore	VARRA #4 PWB
Facility	SEC.05-T06N-R67W		

WELLPATH DATA (181 stations) † = interpolated/extrapolated station

MD [ft]	Inclination [°]	Azimuth [°]	TVD [ft]	Vert Sect [ft]	North [ft]	East [ft]	DLS [°/100ft]	Comments
14515.00†	90.000	90.126	7411.00	6353.33	446.87	6339.26	0.00	
14615.00†	90.000	90.126	7411.00	6453.20	446.65	6439.26	0.00	
14715.00†	90.000	90.126	7411.00	6553.08	446.43	6539.26	0.00	
14815.00†	90.000	90.126	7411.00	6652.96	446.21	6639.26	0.00	
14915.00†	90.000	90.126	7411.00	6752.83	445.99	6739.26	0.00	
15015.00†	90.000	90.126	7411.00	6852.71	445.77	6839.26	0.00	
15115.00†	90.000	90.126	7411.00	6952.59	445.55	6939.26	0.00	
15215.00†	90.000	90.126	7411.00	7052.46	445.33	7039.26	0.00	
15315.00†	90.000	90.126	7411.00	7152.34	445.11	7139.26	0.00	
15415.00†	90.000	90.126	7411.00	7252.22	444.89	7239.26	0.00	
15515.00†	90.000	90.126	7411.00	7352.09	444.66	7339.26	0.00	
15615.00†	90.000	90.126	7411.00	7451.97	444.44	7439.26	0.00	
15715.00†	90.000	90.126	7411.00	7551.85	444.22	7539.26	0.00	
15815.00†	90.000	90.126	7411.00	7651.72	444.00	7639.26	0.00	
15915.00†	90.000	90.126	7411.00	7751.60	443.78	7739.26	0.00	
16015.00†	90.000	90.126	7411.00	7851.48	443.56	7839.26	0.00	
16115.00†	90.000	90.126	7411.00	7951.35	443.34	7939.26	0.00	
16215.00†	90.000	90.126	7411.00	8051.23	443.12	8039.26	0.00	
16315.00†	90.000	90.126	7411.00	8151.11	442.90	8139.26	0.00	
16415.00†	90.000	90.126	7411.00	8250.98	442.68	8239.26	0.00	
16515.00†	90.000	90.126	7411.00	8350.86	442.46	8339.26	0.00	
16615.00†	90.000	90.126	7411.00	8450.74	442.24	8439.26	0.00	
16715.00†	90.000	90.126	7411.00	8550.61	442.02	8539.26	0.00	
16815.00†	90.000	90.126	7411.00	8650.49	441.79	8639.26	0.00	
16915.00†	90.000	90.126	7411.00	8750.37	441.57	8739.26	0.00	
17015.00†	90.000	90.126	7411.00	8850.24	441.35	8839.26	0.00	
17115.00†	90.000	90.126	7411.00	8950.12	441.13	8939.26	0.00	
17215.00†	90.000	90.126	7411.00	9049.99	440.91	9039.26	0.00	
17315.00†	90.000	90.126	7411.00	9149.87	440.69	9139.25	0.00	
17415.00†	90.000	90.126	7411.00	9249.75	440.47	9239.25	0.00	



Planned Wellpath Report

VARRA #4 PWP (REV-B.0)
Page 8 of 10



REFERENCE WELLPATH IDENTIFICATION

Operator	EXTRACTION OIL & GAS	Slot	SLOT#04 VARRA #4(1667'FSL & 790'FWL,SEC.05)
Area	COLORADO	Well	VARRA #4
Field	WELD COUNTY (NAD83/TRUE NORTH)	Wellbore	VARRA #4 PWB
Facility	SEC.05-T06N-R67W		

WELLPATH DATA (181 stations)

MD [ft]	Inclination [°]	Azimuth [°]	TVD [ft]	Vert Sect [ft]	North [ft]	East [ft]	DLS [°/100ft]	Comments
17445.35	90.000	90.126	7411.00 ²	9280.06	440.40	9269.61	0.00	End of Tangent

HOLE & CASING SECTIONS - Ref Wellbore: VARRA #4 PWB Ref Wellpath: VARRA #4 PWP (REV-B.0)

String/Diameter	Start MD [ft]	End MD [ft]	Interval [ft]	Start TVD [ft]	End TVD [ft]	Start N/S [ft]	Start E/W [ft]	End N/S [ft]	End E/W [ft]
7.875in Open Hole	1500.00	17445.35	15945.35	1500.00	7411.00	0.00	0.00	440.40	9269.60
5.5in Casing Production	15.00	17445.35	17430.35	15.00	7411.00	0.00	0.00	440.40	9269.60

TARGETS

Name	MD [ft]	TVD [ft]	North [ft]	East [ft]	Grid East [US ft]	Grid North [US ft]	Latitude	Longitude	Shape
VARRA PAD SECTION 04		-9.00	77.98	0.53	3160186.77	1430380.18	40°30'48.118"N	104°55'25.957"W	polygon
VARRA PAD SECTION 05		-9.00	77.98	0.53	3160186.77	1430380.18	40°30'48.118"N	104°55'25.957"W	polygon
2) VARRA #4 BHL ON PLAT REV-1(1950'FSL & 460'FEL,SEC.04)	17445.35	7411.00	440.40	9269.61	3169452.98	1430802.80	40°30'51.682"N	104°53'25.948"W	point
1) VARRA #4 LANDING POINT	7837.03	7411.00	461.62	-338.70	3159845.08	1430761.59	40°30'51.908"N	104°55'30.349"W	point
VARRA PAD CENTER HARDLINES(460' SETBACKS)		7411.00	77.98	0.53	3160186.77	1430380.18	40°30'48.118"N	104°55'25.957"W	polygon



Planned Wellpath Report

VARRA #4 PWP (REV-B.0)

Page 9 of 10



REFERENCE WELLPATH IDENTIFICATION

Operator	EXTRACTION OIL & GAS	Slot	SLOT#04 VARRA #4(1667'FSL & 790'FWL,SEC.05)
Area	COLORADO	Well	VARRA #4
Field	WELD COUNTY (NAD83/TRUE NORTH)	Wellbore	VARRA #4 PWB
Facility	SEC.05-T06N-R67W		

SURVEY PROGRAM - Ref Wellbore: VARRA #4 PWB Ref Wellpath: VARRA #4 PWP (REV-B.0)

Start MD [ft]	End MD [ft]	Positional Uncertainty Model	Log Name/Comment	Wellbore
15.00	17445.35	NaviTrak (Standard)		VARRA #4 PWB



Planned Wellpath Report

VARRA #4 PWP (REV-B.0)

Page 10 of 10



REFERENCE WELLPATH IDENTIFICATION

Operator	EXTRACTION OIL & GAS	Slot	SLOT#04 VARRA #4(1667'FSL & 790'FWL,SEC.05)
Area	COLORADO	Well	VARRA #4
Field	WELD COUNTY (NAD83/TRUE NORTH)	Wellbore	VARRA #4 PWB
Facility	SEC.05-T06N-R67W		

DESIGN COMMENTS

MD [ft]	Inclination [°]	Azimuth [°]	TVD [ft]	Comment
15.00	0.000	294.312	15.00	Tie On
1500.00	0.000	294.312	1500.00	End of Tangent
2065.22	11.304	294.312	2061.56	End of Build
6834.02	11.304	294.312	6737.84	End of Tangent
7837.03	90.000	90.126	7411.00	End of 3D Arc
17445.35	90.000	90.126	7411.00	End of Tangent