

EXTRACTION OIL & GAS

Location: COLORADO Slot: SLOT#03 VARRA #3(1693'FSL & 790'FWL,SEC.05)
Field: WELD COUNTY (NAD83/TRUE NORTH) Well: VARRA #3
Facility: SEC.05-T06N-R67W Wellbore: VARRA #3 PWB

Plot reference wellpath is VARRA #3 PWP (REV-B.0)

True vertical depths are referenced to SAVANNA 802 (15KB) (RKB)	Grid System: NAD83 / Lambert Colorado SP, Northern Zone (501), US feet
Measured depths are referenced to SAVANNA 802 (15KB) (RKB)	North Reference: True north
SAVANNA 802 (15KB) (RKB) to Mean Sea Level: 4889 feet	Scale: True distance
Mean Sea Level to Mud line (At Slot: SLOT#03 VARRA #3(1693'FSL & 790'FWL,SEC.05)): 0 feet	Depths are in feet
Coordinates are in feet referenced to Slot	Created by: ingentjamr on 7/31/2015

Location Information

Facility Name			Grid East (US ft)	Grid North (US ft)	Latitude	Longitude
SEC.05-T06N-R67W			3160186.786	1430380.222	40°30'48.118"N	104°55'25.957"W
Slot	Local N (ft)	Local E (ft)	Grid East (US ft)	Grid North (US ft)	Latitude	Longitude
SLOT#03 VARRA #3(1693FSL & 790FWL,SEC.05)	-52.12	-0.31	3160186.816	1430328.105	40°30'47.603"N	104°55'25.961"W
SAVANNA 802 (15KB) (RKB) to Mud line (At Slot: SLOT#03 VARRA #3(1693FSL & 790FWL,SEC.05))					4889ft	
Mean Sea Level to Mud line (At Slot: SLOT#03 VARRA #3(1693FSL & 790FWL,SEC.05))					0ft	
SAVANNA 802 (15KB) (RKB) to Mean Sea Level					4889ft	

Targets

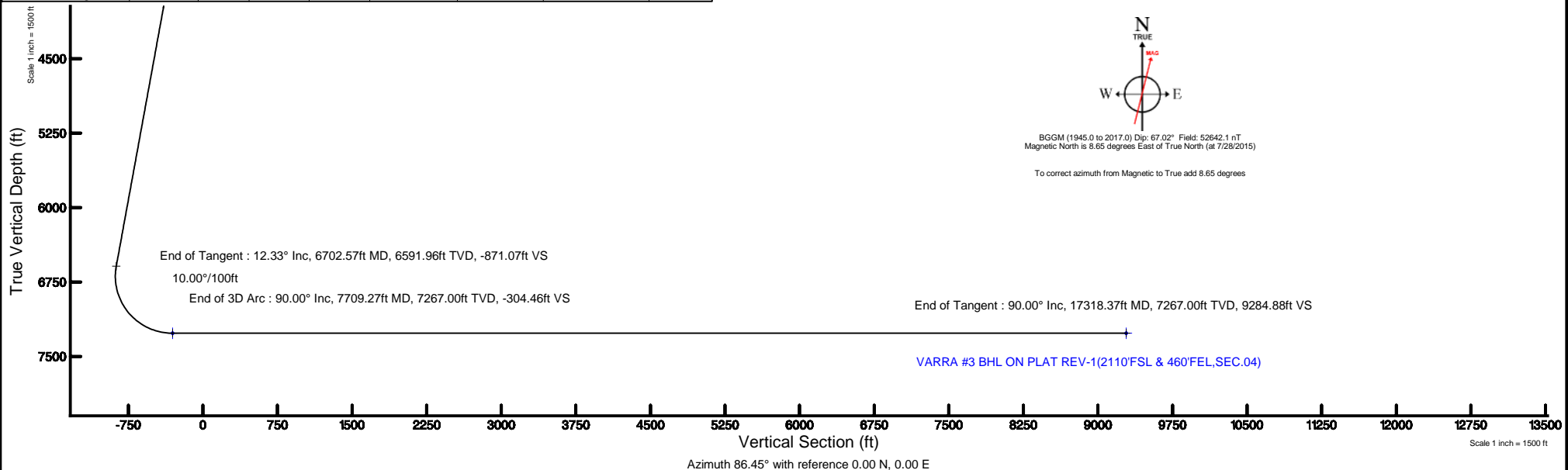
Name	MD (ft)	TVD (ft)	Local N (ft)	Local E (ft)	Grid East (US ft)	Grid North (US ft)	Latitude	Longitude
VARRA PAD SECTION 04		-9.00	52.08	0.29	3160186.77	1430380.18	40°30'48.118"N	104°55'25.957"W
VARRA PAD SECTION 05		-9.00	52.08	0.29	3160186.77	1430380.18	40°30'48.118"N	104°55'25.957"W
VARRA #3 BHL ON PLAT REV-1(2110'FSL & 460'FEL,SEC.04)	17318.37	7267.00	574.43	9267.09	3169449.66	1430962.71	40°30'53.262"N	104°53'25.976"W
VARRA #3 LANDING POINT	7709.27	7267.00	596.01	-341.98	3159840.98	1430921.86	40°30'53.492"N	104°55'30.389"W
VARRA PAD CENTER HARDLINES(460' SETBACKS)		7411.00	52.08	0.29	3160186.77	1430380.18	40°30'48.118"N	104°55'25.957"W

Survey Program

Start MD (ft)	End MD (ft)	Tool	Model	Log Name/Comment	Wellbore
15.00	17991.00	NaviTrak	NaviTrak (Standard)		VARRA #3 PWB

Well Profile Data

Design Comment	MD (ft)	Inc (°)	Az (°)	TVD (ft)	Local N (ft)	Local E (ft)	DLS (°/100ft)	VS (ft)
Tie On	15.00	0.000	300.049	15.00	0.00	0.00	0.00	0.00
End of Tangent	1500.00	0.000	300.049	1500.00	0.00	0.00	0.00	0.00
End of Build	2116.72	12.334	300.049	2111.97	33.11	-57.24	2.00	-55.08
End of Tangent	6702.57	12.334	300.049	6591.96	523.65	-905.20	0.00	-871.07
End of 3D Arc	7709.27	90.000	90.129	7267.00	596.01	-341.98	10.00	-304.46
End of Tangent	17318.37	90.000	90.129	7267.00	574.43	9267.09	0.00	9284.88





Planned Wellpath Report

VARRA #3 PWP (REV-B.0)

Page 1 of 8



REFERENCE WELLPATH IDENTIFICATION

Operator	EXTRACTION OIL & GAS	Slot	SLOT#03 VARRA #3(1693'FSL & 790'FWL,SEC.05)
Area	COLORADO	Well	VARRA #3
Field	WELD COUNTY (NAD83/TRUE NORTH)	Wellbore	VARRA #3 PWB
Facility	SEC.05-T06N-R67W		

REPORT SETUP INFORMATION

Projection System	NAD83 / Lambert Colorado SP, Northern Zone (501), US feet	Software System	WellArchitect® 4.1.1
North Reference	True	User	Ingmjmr
Scale	0.999967	Report Generated	7/31/2015 at 2:58:17 PM
Convergence at slot	0.37° East	Database/Source file	Denver/VARRA_#3_PWB.xml

WELLPATH LOCATION

	Local coordinates		Grid coordinates		Geographic coordinates	
	North[ft]	East[ft]	Easting[US ft]	Northing[US ft]	Latitude	Longitude
Slot Location	-52.12	-0.31	3160186.82	1430328.11	40°30'47.603"N	104°55'25.961"W
Facility Reference Pt			3160186.79	1430380.22	40°30'48.118"N	104°55'25.957"W
Field Reference Pt			3185481.27	1419166.81	40°28'55.560"N	104°49'59.556"W

WELLPATH DATUM

Calculation method	Minimum curvature	SAVANNA 802 (15'KB) (RKB) to Facility Vertical Datum	4889.00ft
Horizontal Reference Pt	Slot	SAVANNA 802 (15'KB) (RKB) to Mean Sea Level	4889.00ft
Vertical Reference Pt	SAVANNA 802 (15'KB) (RKB)	SAVANNA 802 (15'KB) (RKB) to Mud Line at Slot (SLOT#03 VARRA #3(1693'FSL & 790'FWL,SEC.05))	4889.00ft
MD Reference Pt	SAVANNA 802 (15'KB) (RKB)	Section Origin	N 0.00, E 0.00 ft
Field Vertical Reference	Mean Sea Level	Section Azimuth	86.45°



Planned Wellpath Report

VARRA #3 PWP (REV-B.0)

Page 2 of 8



REFERENCE WELLPATH IDENTIFICATION

Operator	EXTRACTION OIL & GAS	Slot	SLOT#03 VARRA #3(1693'FSL & 790'FWL,SEC.05)
Area	COLORADO	Well	VARRA #3
Field	WELD COUNTY (NAD83/TRUE NORTH)	Wellbore	VARRA #3 PWB
Facility	SEC.05-T06N-R67W		

WELLPATH DATA (180 stations) † = interpolated/extrapolated station

MD [ft]	Inclination [°]	Azimuth [°]	TVD [ft]	Vert Sect [ft]	North [ft]	East [ft]	DLS [°/100ft]	Comments
0.00†	0.000	300.049	0.00	0.00	0.00	0.00	0.00	
15.00	0.000	300.049	15.00	0.00	0.00	0.00	0.00	Tie On
115.00†	0.000	300.049	115.00	0.00	0.00	0.00	0.00	
215.00†	0.000	300.049	215.00	0.00	0.00	0.00	0.00	
315.00†	0.000	300.049	315.00	0.00	0.00	0.00	0.00	
415.00†	0.000	300.049	415.00	0.00	0.00	0.00	0.00	
515.00†	0.000	300.049	515.00	0.00	0.00	0.00	0.00	
615.00†	0.000	300.049	615.00	0.00	0.00	0.00	0.00	
715.00†	0.000	300.049	715.00	0.00	0.00	0.00	0.00	
815.00†	0.000	300.049	815.00	0.00	0.00	0.00	0.00	
915.00†	0.000	300.049	915.00	0.00	0.00	0.00	0.00	
1015.00†	0.000	300.049	1015.00	0.00	0.00	0.00	0.00	
1115.00†	0.000	300.049	1115.00	0.00	0.00	0.00	0.00	
1215.00†	0.000	300.049	1215.00	0.00	0.00	0.00	0.00	
1315.00†	0.000	300.049	1315.00	0.00	0.00	0.00	0.00	
1415.00†	0.000	300.049	1415.00	0.00	0.00	0.00	0.00	
1500.00	0.000	300.049	1500.00	0.00	0.00	0.00	0.00	End of Tangent
1515.00†	0.300	300.049	1515.00	-0.03	0.02	-0.03	2.00	
1615.00†	2.300	300.049	1614.97	-1.92	1.16	-2.00	2.00	
1715.00†	4.300	300.049	1714.80	-6.72	4.04	-6.98	2.00	
1815.00†	6.300	300.049	1814.37	-14.41	8.66	-14.98	2.00	
1915.00†	8.300	300.049	1913.55	-24.99	15.03	-25.97	2.00	
2015.00†	10.300	300.049	2012.23	-38.45	23.12	-39.96	2.00	
2115.00†	12.300	300.049	2110.29	-54.78	32.93	-56.92	2.00	
2116.72	12.334	300.049	2111.97	-55.08	33.11	-57.24	2.00	End of Build
2215.00†	12.334	300.049	2207.98	-72.57	43.62	-75.41	0.00	
2315.00†	12.334	300.049	2305.67	-90.36	54.32	-93.90	0.00	
2415.00†	12.334	300.049	2403.36	-108.16	65.02	-112.39	0.00	
2515.00†	12.334	300.049	2501.05	-125.95	75.71	-130.88	0.00	
2615.00†	12.334	300.049	2598.75	-143.74	86.41	-149.37	0.00	



Planned Wellpath Report

VARRA #3 PWP (REV-B.0)

Page 3 of 8



REFERENCE WELLPATH IDENTIFICATION

Operator	EXTRACTION OIL & GAS	Slot	SLOT#03 VARRA #3(1693'FSL & 790'FWL,SEC.05)
Area	COLORADO	Well	VARRA #3
Field	WELD COUNTY (NAD83/TRUE NORTH)	Wellbore	VARRA #3 PWB
Facility	SEC.05-T06N-R67W		

WELLPATH DATA (180 stations) † = interpolated/extrapolated station

MD [ft]	Inclination [°]	Azimuth [°]	TVD [ft]	Vert Sect [ft]	North [ft]	East [ft]	DLS [°/100ft]	Comments
2715.00†	12.334	300.049	2696.44	-161.54	97.11	-167.87	0.00	
2815.00†	12.334	300.049	2794.13	-179.33	107.81	-186.36	0.00	
2915.00†	12.334	300.049	2891.82	-197.12	118.50	-204.85	0.00	
3015.00†	12.334	300.049	2989.51	-214.92	129.20	-223.34	0.00	
3115.00†	12.334	300.049	3087.20	-232.71	139.90	-241.83	0.00	
3215.00†	12.334	300.049	3184.90	-250.50	150.59	-260.32	0.00	
3315.00†	12.334	300.049	3282.59	-268.30	161.29	-278.81	0.00	
3415.00†	12.334	300.049	3380.28	-286.09	171.99	-297.30	0.00	
3515.00†	12.334	300.049	3477.97	-303.89	182.68	-315.79	0.00	
3615.00†	12.334	300.049	3575.66	-321.68	193.38	-334.28	0.00	
3715.00†	12.334	300.049	3673.35	-339.47	204.08	-352.77	0.00	
3815.00†	12.334	300.049	3771.05	-357.27	214.77	-371.26	0.00	
3915.00†	12.334	300.049	3868.74	-375.06	225.47	-389.76	0.00	
4015.00†	12.334	300.049	3966.43	-392.85	236.17	-408.25	0.00	
4115.00†	12.334	300.049	4064.12	-410.65	246.86	-426.74	0.00	
4215.00†	12.334	300.049	4161.81	-428.44	257.56	-445.23	0.00	
4315.00†	12.334	300.049	4259.50	-446.23	268.26	-463.72	0.00	
4415.00†	12.334	300.049	4357.20	-464.03	278.95	-482.21	0.00	
4515.00†	12.334	300.049	4454.89	-481.82	289.65	-500.70	0.00	
4615.00†	12.334	300.049	4552.58	-499.61	300.35	-519.19	0.00	
4715.00†	12.334	300.049	4650.27	-517.41	311.04	-537.68	0.00	
4815.00†	12.334	300.049	4747.96	-535.20	321.74	-556.17	0.00	
4915.00†	12.334	300.049	4845.66	-553.00	332.44	-574.66	0.00	
5015.00†	12.334	300.049	4943.35	-570.79	343.13	-593.15	0.00	
5115.00†	12.334	300.049	5041.04	-588.58	353.83	-611.64	0.00	
5215.00†	12.334	300.049	5138.73	-606.38	364.53	-630.14	0.00	
5315.00†	12.334	300.049	5236.42	-624.17	375.22	-648.63	0.00	
5415.00†	12.334	300.049	5334.11	-641.96	385.92	-667.12	0.00	
5515.00†	12.334	300.049	5431.81	-659.76	396.62	-685.61	0.00	
5615.00†	12.334	300.049	5529.50	-677.55	407.31	-704.10	0.00	



Planned Wellpath Report

VARRA #3 PWP (REV-B.0)

Page 4 of 8



REFERENCE WELLPATH IDENTIFICATION

Operator	EXTRACTION OIL & GAS	Slot	SLOT#03 VARRA #3(1693'FSL & 790'FWL,SEC.05)
Area	COLORADO	Well	VARRA #3
Field	WELD COUNTY (NAD83/TRUE NORTH)	Wellbore	VARRA #3 PWB
Facility	SEC.05-T06N-R67W		

WELLPATH DATA (180 stations) † = interpolated/extrapolated station

MD [ft]	Inclination [°]	Azimuth [°]	TVD [ft]	Vert Sect [ft]	North [ft]	East [ft]	DLS [°/100ft]	Comments
5715.00†	12.334	300.049	5627.19	-695.34	418.01	-722.59	0.00	
5815.00†	12.334	300.049	5724.88	-713.14	428.71	-741.08	0.00	
5915.00†	12.334	300.049	5822.57	-730.93	439.40	-759.57	0.00	
6015.00†	12.334	300.049	5920.26	-748.73	450.10	-778.06	0.00	
6115.00†	12.334	300.049	6017.96	-766.52	460.80	-796.55	0.00	
6215.00†	12.334	300.049	6115.65	-784.31	471.49	-815.04	0.00	
6315.00†	12.334	300.049	6213.34	-802.11	482.19	-833.53	0.00	
6415.00†	12.334	300.049	6311.03	-819.90	492.89	-852.03	0.00	
6515.00†	12.334	300.049	6408.72	-837.69	503.58	-870.52	0.00	
6615.00†	12.334	300.049	6506.41	-855.49	514.28	-889.01	0.00	
6702.57	12.334	300.049	6591.96	-871.07	523.65	-905.20	0.00	End of Tangent
6715.00†	11.281	303.275	6604.13	-873.15	524.98	-907.37	10.00	
6815.00†	6.251	5.400	6703.12	-880.15	535.79	-915.05	10.00	
6915.00†	12.251	59.977	6801.93	-869.78	546.55	-905.33	10.00	
7015.00†	21.455	74.016	6897.57	-842.35	556.92	-878.49	10.00	
7115.00†	31.140	79.729	6987.13	-798.70	566.59	-835.36	10.00	
7215.00†	40.966	82.912	7067.89	-740.16	575.27	-777.24	10.00	
7315.00†	50.850	85.034	7137.38	-668.49	582.69	-705.90	10.00	
7415.00†	60.764	86.629	7193.52	-585.89	588.63	-623.50	10.00	
7515.00†	70.692	87.939	7234.57	-494.86	592.90	-532.56	10.00	
7615.00†	80.629	89.097	7259.31	-398.16	595.38	-435.83	10.00	
7709.27	90.000	90.129	7267.00 [†]	-304.46	596.01	-341.98	10.00	End of 3D Arc
7715.00†	90.000	90.129	7267.00	-298.74	596.00	-336.25	0.00	
7815.00†	90.000	90.129	7267.00	-198.94	595.77	-236.25	0.00	
7915.00†	90.000	90.129	7267.00	-99.15	595.55	-136.25	0.00	
8015.00†	90.000	90.129	7267.00	0.65	595.32	-36.25	0.00	
8115.00†	90.000	90.129	7267.00	100.44	595.10	63.75	0.00	
8215.00†	90.000	90.129	7267.00	200.24	594.87	163.75	0.00	
8315.00†	90.000	90.129	7267.00	300.03	594.65	263.75	0.00	
8415.00†	90.000	90.129	7267.00	399.82	594.42	363.75	0.00	



Planned Wellpath Report

VARRA #3 PWP (REV-B.0)

Page 5 of 8



REFERENCE WELLPATH IDENTIFICATION

Operator	EXTRACTION OIL & GAS	Slot	SLOT#03 VARRA #3(1693'FSL & 790'FWL,SEC.05)
Area	COLORADO	Well	VARRA #3
Field	WELD COUNTY (NAD83/TRUE NORTH)	Wellbore	VARRA #3 PWB
Facility	SEC.05-T06N-R67W		

WELLPATH DATA (180 stations) † = interpolated/extrapolated station

MD [ft]	Inclination [°]	Azimuth [°]	TVD [ft]	Vert Sect [ft]	North [ft]	East [ft]	DLS [°/100ft]	Comments
8515.00†	90.000	90.129	7267.00	499.62	594.20	463.75	0.00	
8615.00†	90.000	90.129	7267.00	599.41	593.97	563.75	0.00	
8715.00†	90.000	90.129	7267.00	699.21	593.75	663.75	0.00	
8815.00†	90.000	90.129	7267.00	799.00	593.53	763.75	0.00	
8915.00†	90.000	90.129	7267.00	898.80	593.30	863.74	0.00	
9015.00†	90.000	90.129	7267.00	998.59	593.08	963.74	0.00	
9115.00†	90.000	90.129	7267.00	1098.38	592.85	1063.74	0.00	
9215.00†	90.000	90.129	7267.00	1198.18	592.63	1163.74	0.00	
9315.00†	90.000	90.129	7267.00	1297.97	592.40	1263.74	0.00	
9415.00†	90.000	90.129	7267.00	1397.77	592.18	1363.74	0.00	
9515.00†	90.000	90.129	7267.00	1497.56	591.95	1463.74	0.00	
9615.00†	90.000	90.129	7267.00	1597.36	591.73	1563.74	0.00	
9715.00†	90.000	90.129	7267.00	1697.15	591.50	1663.74	0.00	
9815.00†	90.000	90.129	7267.00	1796.95	591.28	1763.74	0.00	
9915.00†	90.000	90.129	7267.00	1896.74	591.06	1863.74	0.00	
10015.00†	90.000	90.129	7267.00	1996.53	590.83	1963.74	0.00	
10115.00†	90.000	90.129	7267.00	2096.33	590.61	2063.74	0.00	
10215.00†	90.000	90.129	7267.00	2196.12	590.38	2163.74	0.00	
10315.00†	90.000	90.129	7267.00	2295.92	590.16	2263.74	0.00	
10415.00†	90.000	90.129	7267.00	2395.71	589.93	2363.74	0.00	
10515.00†	90.000	90.129	7267.00	2495.51	589.71	2463.74	0.00	
10615.00†	90.000	90.129	7267.00	2595.30	589.48	2563.74	0.00	
10715.00†	90.000	90.129	7267.00	2695.09	589.26	2663.74	0.00	
10815.00†	90.000	90.129	7267.00	2794.89	589.03	2763.74	0.00	
10915.00†	90.000	90.129	7267.00	2894.68	588.81	2863.74	0.00	
11015.00†	90.000	90.129	7267.00	2994.48	588.59	2963.74	0.00	
11115.00†	90.000	90.129	7267.00	3094.27	588.36	3063.74	0.00	
11215.00†	90.000	90.129	7267.00	3194.07	588.14	3163.74	0.00	
11315.00†	90.000	90.129	7267.00	3293.86	587.91	3263.74	0.00	
11415.00†	90.000	90.129	7267.00	3393.65	587.69	3363.74	0.00	



Planned Wellpath Report

VARRA #3 PWP (REV-B.0)

Page 6 of 8



REFERENCE WELLPATH IDENTIFICATION

Operator	EXTRACTION OIL & GAS	Slot	SLOT#03 VARRA #3(1693'FSL & 790'FWL,SEC.05)
Area	COLORADO	Well	VARRA #3
Field	WELD COUNTY (NAD83/TRUE NORTH)	Wellbore	VARRA #3 PWB
Facility	SEC.05-T06N-R67W		

WELLPATH DATA (180 stations) † = interpolated/extrapolated station

MD [ft]	Inclination [°]	Azimuth [°]	TVD [ft]	Vert Sect [ft]	North [ft]	East [ft]	DLS [°/100ft]	Comments
11515.00†	90.000	90.129	7267.00	3493.45	587.46	3463.74	0.00	
11615.00†	90.000	90.129	7267.00	3593.24	587.24	3563.74	0.00	
11715.00†	90.000	90.129	7267.00	3693.04	587.01	3663.74	0.00	
11815.00†	90.000	90.129	7267.00	3792.83	586.79	3763.74	0.00	
11915.00†	90.000	90.129	7267.00	3892.63	586.56	3863.74	0.00	
12015.00†	90.000	90.129	7267.00	3992.42	586.34	3963.74	0.00	
12115.00†	90.000	90.129	7267.00	4092.21	586.12	4063.74	0.00	
12215.00†	90.000	90.129	7267.00	4192.01	585.89	4163.74	0.00	
12315.00†	90.000	90.129	7267.00	4291.80	585.67	4263.74	0.00	
12415.00†	90.000	90.129	7267.00	4391.60	585.44	4363.74	0.00	
12515.00†	90.000	90.129	7267.00	4491.39	585.22	4463.74	0.00	
12615.00†	90.000	90.129	7267.00	4591.19	584.99	4563.74	0.00	
12715.00†	90.000	90.129	7267.00	4690.98	584.77	4663.74	0.00	
12815.00†	90.000	90.129	7267.00	4790.77	584.54	4763.74	0.00	
12915.00†	90.000	90.129	7267.00	4890.57	584.32	4863.73	0.00	
13015.00†	90.000	90.129	7267.00	4990.36	584.09	4963.73	0.00	
13115.00†	90.000	90.129	7267.00	5090.16	583.87	5063.73	0.00	
13215.00†	90.000	90.129	7267.00	5189.95	583.65	5163.73	0.00	
13315.00†	90.000	90.129	7267.00	5289.75	583.42	5263.73	0.00	
13415.00†	90.000	90.129	7267.00	5389.54	583.20	5363.73	0.00	
13515.00†	90.000	90.129	7267.00	5489.33	582.97	5463.73	0.00	
13615.00†	90.000	90.129	7267.00	5589.13	582.75	5563.73	0.00	
13715.00†	90.000	90.129	7267.00	5688.92	582.52	5663.73	0.00	
13815.00†	90.000	90.129	7267.00	5788.72	582.30	5763.73	0.00	
13915.00†	90.000	90.129	7267.00	5888.51	582.07	5863.73	0.00	
14015.00†	90.000	90.129	7267.00	5988.31	581.85	5963.73	0.00	
14115.00†	90.000	90.129	7267.00	6088.10	581.62	6063.73	0.00	
14215.00†	90.000	90.129	7267.00	6187.89	581.40	6163.73	0.00	
14315.00†	90.000	90.129	7267.00	6287.69	581.18	6263.73	0.00	
14415.00†	90.000	90.129	7267.00	6387.48	580.95	6363.73	0.00	



Planned Wellpath Report

VARRA #3 PWP (REV-B.0)

Page 7 of 8



REFERENCE WELLPATH IDENTIFICATION

Operator	EXTRACTION OIL & GAS	Slot	SLOT#03 VARRA #3(1693'FSL & 790'FWL,SEC.05)
Area	COLORADO	Well	VARRA #3
Field	WELD COUNTY (NAD83/TRUE NORTH)	Wellbore	VARRA #3 PWB
Facility	SEC.05-T06N-R67W		

WELLPATH DATA (180 stations) † = interpolated/extrapolated station

MD [ft]	Inclination [°]	Azimuth [°]	TVD [ft]	Vert Sect [ft]	North [ft]	East [ft]	DLS [°/100ft]	Comments
14515.00†	90.000	90.129	7267.00	6487.28	580.73	6463.73	0.00	
14615.00†	90.000	90.129	7267.00	6587.07	580.50	6563.73	0.00	
14715.00†	90.000	90.129	7267.00	6686.87	580.28	6663.73	0.00	
14815.00†	90.000	90.129	7267.00	6786.66	580.05	6763.73	0.00	
14915.00†	90.000	90.129	7267.00	6886.45	579.83	6863.73	0.00	
15015.00†	90.000	90.129	7267.00	6986.25	579.60	6963.73	0.00	
15115.00†	90.000	90.129	7267.00	7086.04	579.38	7063.73	0.00	
15215.00†	90.000	90.129	7267.00	7185.84	579.15	7163.73	0.00	
15315.00†	90.000	90.129	7267.00	7285.63	578.93	7263.73	0.00	
15415.00†	90.000	90.129	7267.00	7385.43	578.71	7363.73	0.00	
15515.00†	90.000	90.129	7267.00	7485.22	578.48	7463.73	0.00	
15615.00†	90.000	90.129	7267.00	7585.01	578.26	7563.73	0.00	
15715.00†	90.000	90.129	7267.00	7684.81	578.03	7663.73	0.00	
15815.00†	90.000	90.129	7267.00	7784.60	577.81	7763.73	0.00	
15915.00†	90.000	90.129	7267.00	7884.40	577.58	7863.73	0.00	
16015.00†	90.000	90.129	7267.00	7984.19	577.36	7963.73	0.00	
16115.00†	90.000	90.129	7267.00	8083.99	577.13	8063.73	0.00	
16215.00†	90.000	90.129	7267.00	8183.78	576.91	8163.73	0.00	
16315.00†	90.000	90.129	7267.00	8283.57	576.68	8263.73	0.00	
16415.00†	90.000	90.129	7267.00	8383.37	576.46	8363.73	0.00	
16515.00†	90.000	90.129	7267.00	8483.16	576.24	8463.73	0.00	
16615.00†	90.000	90.129	7267.00	8582.96	576.01	8563.73	0.00	
16715.00†	90.000	90.129	7267.00	8682.75	575.79	8663.73	0.00	
16815.00†	90.000	90.129	7267.00	8782.55	575.56	8763.73	0.00	
16915.00†	90.000	90.129	7267.00	8882.34	575.34	8863.72	0.00	
17015.00†	90.000	90.129	7267.00	8982.13	575.11	8963.72	0.00	
17115.00†	90.000	90.129	7267.00	9081.93	574.89	9063.72	0.00	
17215.00†	90.000	90.129	7267.00	9181.72	574.66	9163.72	0.00	
17315.00†	90.000	90.129	7267.00	9281.52	574.44	9263.72	0.00	
17318.37	90.000	90.129	7267.00 ²	9284.88	574.43	9267.09	0.00	End of Tangent

HOLE & CASING SECTIONS - Ref Wellbore: VARRA #3 PWB Ref Wellpath: VARRA #3 PWP (REV-B.0)

String/Diameter	Start MD [ft]	End MD [ft]	Interval [ft]	Start TVD [ft]	End TVD [ft]	Start N/S [ft]	Start E/W [ft]	End N/S [ft]	End E/W [ft]
7.875in Open Hole	1500.00	17318.37	15818.37	1500.00	N/A	0.00	0.00	N/A	N/A
5.5in Casing Production	15.00	17318.37	17303.37	15.00	N/A	0.00	0.00	N/A	N/A

TARGETS

Name	MD [ft]	TVD [ft]	North [ft]	East [ft]	Grid East [US ft]	Grid North [US ft]	Latitude	Longitude	Shape
VARRA PAD SECTION 04		-9.00	52.08	0.29	3160186.77	1430380.18	40°30'48.118"N	104°55'25.957"W	polygon
VARRA PAD SECTION 05		-9.00	52.08	0.29	3160186.77	1430380.18	40°30'48.118"N	104°55'25.957"W	polygon
2) VARRA #3 BHL ON PLAT	17318.37	7267.00	574.43	9267.09	3169449.66	1430962.71	40°30'53.262"N	104°53'25.976"W	point

REV-1(2110'FSL & 460'FEL,SEC.04)										
1) VARRA #3 LANDING POINT	7709.27	7267.00	596.01	-341.98	3159840.98	1430921.86	40°30'53.492"N	104°55'30.389"W	point	
VARRA PAD CENTER HARDLINES(460' SETBACKS)		7411.00	52.08	0.29	3160186.77	1430380.18	40°30'48.118"N	104°55'25.957"W	polygon	

SURVEY PROGRAM - Ref Wellbore: VARRA #3 PWB					Ref Wellpath: VARRA #3 PWP (REV-B.0)				
Start MD [ft]	End MD [ft]	Positional Uncertainty Model			Log Name/Comment			Wellbore	
15.00	17991.00	NaviTrak (Standard)						VARRA #3 PWB	



Planned Wellpath Report

VARRA #3 PWP (REV-B.0)
Page 8 of 8



REFERENCE WELLPATH IDENTIFICATION

Operator	EXTRACTION OIL & GAS	Slot	SLOT#03 VARRA #3(1693'FSL & 790'FWL,SEC.05)
Area	COLORADO	Well	VARRA #3
Field	WELD COUNTY (NAD83/TRUE NORTH)	Wellbore	VARRA #3 PWB
Facility	SEC.05-T06N-R67W		

DESIGN COMMENTS

MD [ft]	Inclination [°]	Azimuth [°]	TVD [ft]	Comment
15.00	0.000	300.049	15.00	Tie On
1500.00	0.000	300.049	1500.00	End of Tangent
2116.72	12.334	300.049	2111.97	End of Build
6702.57	12.334	300.049	6591.96	End of Tangent
7709.27	90.000	90.129	7267.00	End of 3D Arc
17318.37	90.000	90.129	7267.00	End of Tangent