

Bayswater Exploration & Production, LLC

Well Name: **Arellano R-10-9HC**

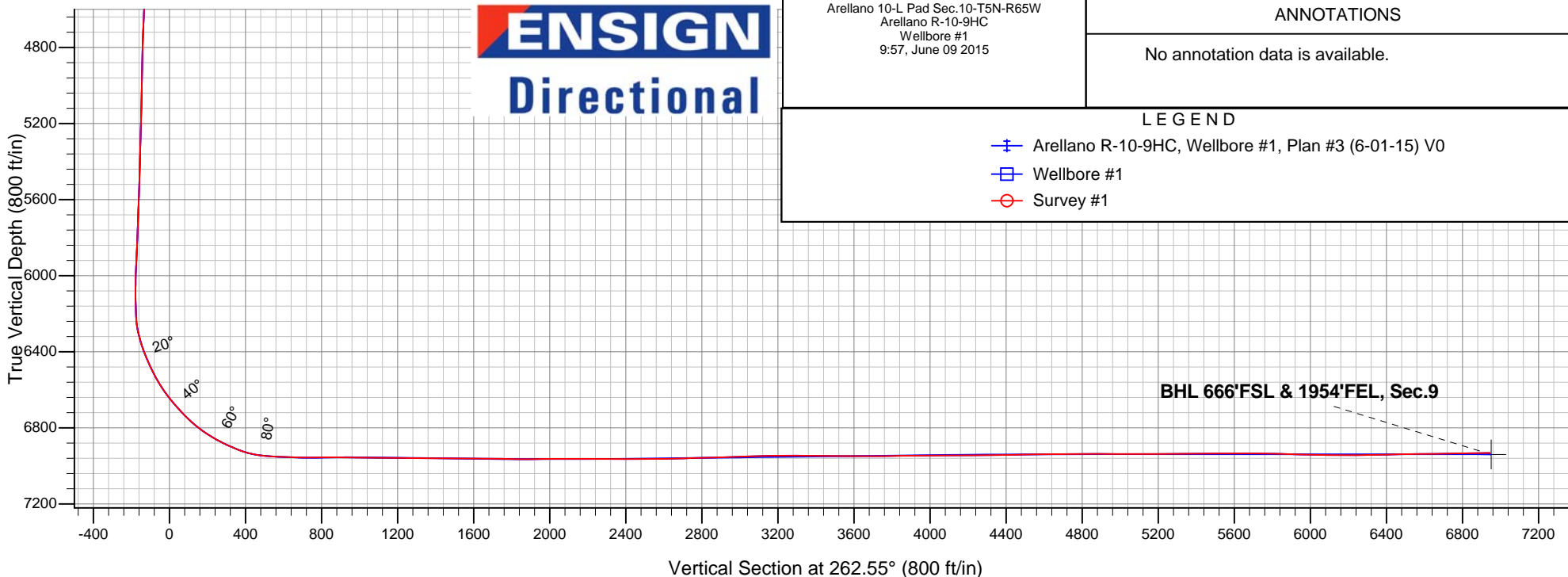
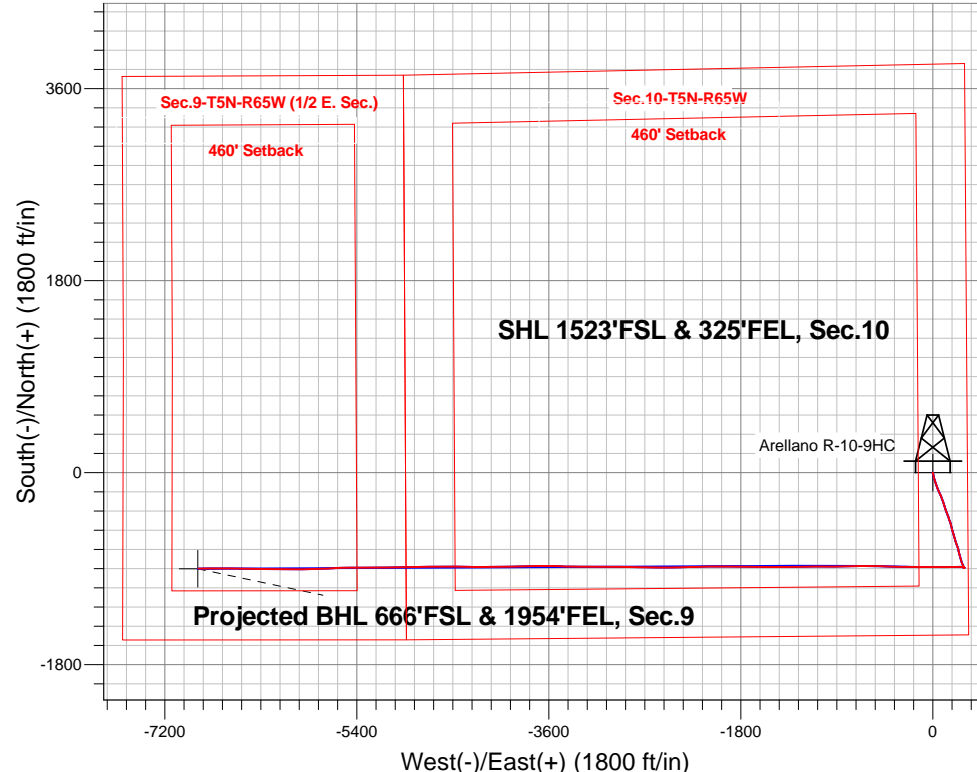
Surface Location: Arellano 10-L Pad Sec.10-T5N-R65W
North American Datum 1983 , US State Plane 1983 , Colorado Northern Zone

Ground Elevation: 4616.0

+N/-S	+E/-W	Northing	Easting	Latitude	Longitude	Slot
0.0	0.0	1393643.02	3239146.01	40.410773	-104.641189	
RKB - 22.5' WELL @ 4638.5ft (RKB - 22.5')						

FINAL SURVEY

Projected Bottom Hole Location
13880'MD 6932'TVD 900'S & 6886'W of SHL
90.92 degree Incl @ 269.25 degree AZM





Bayswater Exploration & Production, LLC

SEC.10-T5N-R65W

Arellano 10-L Pad Sec.10-T5N-R65W

Arellano R-10-9HC

Wellbore #1

Survey: Survey #1

Standard Survey Report

08 July, 2015



BAYSWATER
EXPLORATION & PRODUCTION, LLC

Company:	Bayswater Exploration & Production, LLC	Local Co-ordinate Reference:	Well Arellano R-10-9HC
Project:	SEC.10-T5N-R65W	TVD Reference:	WELL @ 4638.5ft (RKB - 22.5')
Site:	Arellano 10-L Pad Sec.10-T5N-R65W	MD Reference:	WELL @ 4638.5ft (RKB - 22.5')
Well:	Arellano R-10-9HC	North Reference:	True
Wellbore:	Wellbore #1	Survey Calculation Method:	Minimum Curvature
Design:	Wellbore #1	Database:	EDMNEW

Project	SEC.10-T5N-R65W, Weld County, CO		
Map System:	US State Plane 1983	System Datum:	Mean Sea Level
Geo Datum:	North American Datum 1983		Using Well Reference Point
Map Zone:	Colorado Northern Zone		

Site	Arellano 10-L Pad Sec.10-T5N-R65W				
Site Position:		Northing:	1,393,742.11 ft	Latitude:	40.411044
From:	Lat/Long	Easting:	3,239,181.53 ft	Longitude:	-104.641058
Position Uncertainty:	0.0 ft	Slot Radius:	"	Grid Convergence:	0.55 °

Well	Arellano R-10-9HC					
Well Position	+N/-S	0.0 ft	Northing:	1,393,643.02 ft	Latitude:	40.410773
	+E/-W	0.0 ft	Easting:	3,239,146.01 ft	Longitude:	-104.641189
Position Uncertainty		0.0 ft	Wellhead Elevation:	ft	Ground Level:	4,616.0ft

Wellbore	Wellbore #1				
Magnetics	Model Name	Sample Date	Declination (°)	Dip Angle (°)	Field Strength (nT)
	IGRF2010	3/27/2015	8.29	66.95	52,753

Design	Wellbore #1				
Audit Notes:					
Version:	1.0	Phase:	ACTUAL	Tie On Depth:	0.0
Vertical Section:	Depth From (TVD) (ft)	+N/-S (ft)	+E/-W (ft)	Direction (°)	
	0.0	0.0	0.0	262.55	

Survey Program	Date	6/9/2015			
From (ft)	To (ft)	Survey (Wellbore)	Tool Name	Description	
223.0	13,880.0	Survey #1 (Wellbore #1)	MWD	MWD - Standard	

Survey										
Measured Depth (ft)	Inclination (°)	Azimuth (°)	Vertical Depth (ft)	+N/-S (ft)	+E/-W (ft)	Vertical Section (ft)	Dogleg Rate (°/100ft)	Build Rate (°/100ft)	Turn Rate (°/100ft)	
0.0	0.00	0.00	0.0	0.0	0.0	0.0	0.00	0.00	0.00	
1.0	0.00	283.00	1.0	0.0	0.0	0.0	0.00	0.00	0.00	
SHL 1523'FSL & 325'FEL, Sec.10										
223.0	0.20	283.00	223.0	0.1	-0.4	0.4	0.09	0.09	0.00	
315.0	0.40	301.80	315.0	0.3	-0.8	0.8	0.24	0.22	20.43	
407.0	0.30	309.20	407.0	0.6	-1.3	1.2	0.12	-0.11	8.04	
499.0	0.40	224.50	499.0	0.5	-1.7	1.6	0.52	0.11	-92.07	
591.0	0.40	298.90	591.0	0.5	-2.2	2.1	0.53	0.00	80.87	
683.0	0.50	314.50	683.0	0.9	-2.8	2.6	0.17	0.11	16.96	
745.0	0.10	17.80	745.0	1.1	-2.9	2.8	0.75	-0.65	102.10	
830.0	0.30	125.50	830.0	1.1	-2.7	2.6	0.40	0.24	126.71	
926.0	3.10	170.90	925.9	-1.6	-2.1	2.3	3.02	2.92	47.29	
1,021.0	4.30	153.80	1,020.7	-7.4	-0.1	1.1	1.70	1.26	-18.00	

Company:	Bayswater Exploration & Production, LLC	Local Co-ordinate Reference:	Well Arellano R-10-9HC
Project:	SEC.10-T5N-R65W	TVD Reference:	WELL @ 4638.5ft (RKB - 22.5')
Site:	Arellano 10-L Pad Sec.10-T5N-R65W	MD Reference:	WELL @ 4638.5ft (RKB - 22.5')
Well:	Arellano R-10-9HC	North Reference:	True
Wellbore:	Wellbore #1	Survey Calculation Method:	Minimum Curvature
Design:	Wellbore #1	Database:	EDMNEW

Survey

Measured Depth (ft)	Inclination (°)	Azimuth (°)	Vertical Depth (ft)	+N/-S (ft)	+E/-W (ft)	Vertical Section (ft)	Dogleg Rate (°/100ft)	Build Rate (°/100ft)	Turn Rate (°/100ft)
1,116.0	5.50	170.70	1,115.4	-15.0	2.2	-0.2	1.96	1.26	17.79
1,208.0	7.00	166.80	1,206.8	-24.9	4.2	-0.9	1.69	1.63	-4.24
1,301.0	8.90	167.00	1,299.0	-37.4	7.1	-2.2	2.04	2.04	0.22
1,393.0	10.00	164.60	1,389.7	-52.0	10.8	-4.0	1.27	1.20	-2.61
1,485.0	9.20	163.00	1,480.4	-66.8	15.1	-6.3	0.92	-0.87	-1.74
1,577.0	10.60	161.70	1,571.0	-81.8	19.9	-9.1	1.54	1.52	-1.41
1,669.0	9.50	158.90	1,661.6	-96.9	25.3	-12.5	1.31	-1.20	-3.04
1,761.0	9.50	160.50	1,752.4	-111.2	30.5	-15.9	0.29	0.00	1.74
1,853.0	11.00	161.70	1,842.9	-126.7	35.8	-19.1	1.65	1.63	1.30
2,037.0	9.80	159.10	2,023.9	-158.0	46.9	-26.1	0.70	-0.65	-1.41
2,129.0	10.90	154.90	2,114.4	-173.2	53.4	-30.5	1.45	1.20	-4.57
2,222.0	11.20	155.40	2,205.6	-189.3	60.9	-35.8	0.34	0.32	0.54
2,314.0	11.40	155.10	2,295.9	-205.7	68.5	-41.2	0.23	0.22	-0.33
2,406.0	10.80	158.80	2,386.1	-222.0	75.4	-46.0	1.01	-0.65	4.02
2,498.0	12.00	160.20	2,476.3	-239.0	81.8	-50.1	1.34	1.30	1.52
2,593.0	12.20	158.10	2,569.2	-257.6	88.8	-54.7	0.51	0.21	-2.21
2,688.0	12.80	158.60	2,662.0	-276.7	96.4	-59.7	0.64	0.63	0.53
2,783.0	14.70	162.30	2,754.2	-298.0	103.9	-64.4	2.20	2.00	3.89
2,879.0	13.40	161.70	2,847.4	-320.2	111.1	-68.7	1.36	-1.35	-0.63
2,974.0	14.10	165.80	2,939.6	-341.9	117.4	-72.1	1.26	0.74	4.32
3,069.0	12.80	163.70	3,032.0	-363.2	123.2	-75.1	1.46	-1.37	-2.21
3,164.0	11.40	157.90	3,124.9	-382.0	129.7	-79.1	1.95	-1.47	-6.11
3,259.0	11.70	156.30	3,218.0	-399.5	137.1	-84.2	0.46	0.32	-1.68
3,355.0	12.30	160.50	3,311.9	-418.1	144.4	-89.0	1.10	0.63	4.38
3,450.0	11.90	158.80	3,404.8	-436.7	151.4	-93.5	0.56	-0.42	-1.79
3,545.0	11.10	159.60	3,497.9	-454.4	158.1	-97.8	0.86	-0.84	0.84
3,640.0	11.50	163.20	3,591.1	-472.1	164.0	-101.4	0.85	0.42	3.79
3,735.0	13.10	167.50	3,683.9	-491.6	169.1	-103.9	1.94	1.68	4.53
3,830.0	13.50	166.50	3,776.3	-512.9	174.0	-106.0	0.49	0.42	-1.05
3,926.0	13.80	165.60	3,869.6	-534.9	179.5	-108.6	0.38	0.31	-0.94
4,021.0	13.20	163.00	3,962.0	-556.3	185.4	-111.8	0.90	-0.63	-2.74
4,116.0	11.60	162.10	4,054.8	-575.7	191.6	-115.3	1.70	-1.68	-0.95
4,211.0	12.30	165.60	4,147.7	-594.6	197.0	-118.3	1.06	0.74	3.68
4,306.0	11.30	160.70	4,240.7	-613.2	202.6	-121.4	1.49	-1.05	-5.16
4,402.0	10.80	161.70	4,334.9	-630.6	208.5	-125.0	0.56	-0.52	1.04
4,497.0	10.60	166.80	4,428.3	-647.6	213.3	-127.6	1.02	-0.21	5.37
4,592.0	9.80	161.90	4,521.8	-663.8	217.8	-130.0	1.24	-0.84	-5.16
4,687.0	9.80	158.40	4,615.4	-679.0	223.3	-133.4	0.63	0.00	-3.68
4,782.0	10.90	162.80	4,708.8	-695.1	228.9	-136.9	1.43	1.16	4.63
4,877.0	10.50	160.70	4,802.2	-711.8	234.5	-140.2	0.59	-0.42	-2.21
4,972.0	11.70	169.30	4,895.4	-729.5	239.1	-142.6	2.15	1.26	9.05
5,068.0	10.50	165.30	4,989.6	-747.5	243.1	-144.2	1.48	-1.25	-4.17
5,163.0	8.70	161.70	5,083.3	-762.7	247.6	-146.7	2.00	-1.89	-3.79
5,258.0	10.20	167.40	5,177.0	-777.7	251.7	-148.8	1.86	1.58	6.00
5,353.0	10.60	166.30	5,270.4	-794.4	255.6	-150.5	0.47	0.42	-1.16
5,448.0	10.20	162.10	5,363.9	-810.9	260.2	-152.9	0.90	-0.42	-4.42
5,543.0	11.40	163.50	5,457.2	-827.9	265.5	-156.0	1.29	1.26	1.47
5,638.0	8.80	160.00	5,550.7	-843.8	270.7	-159.0	2.81	-2.74	-3.68
5,733.0	8.40	159.60	5,644.6	-857.1	275.6	-162.1	0.43	-0.42	-0.42
5,828.0	7.10	152.40	5,738.8	-868.8	280.7	-165.7	1.71	-1.37	-7.58
5,923.0	5.50	147.30	5,833.2	-877.8	285.9	-169.7	1.78	-1.68	-5.37
6,018.0	4.70	141.70	5,927.8	-884.7	290.7	-173.6	0.99	-0.84	-5.89
6,114.0	2.70	134.30	6,023.6	-889.4	294.8	-177.0	2.14	-2.08	-7.71
6,209.0	1.00	252.60	6,118.6	-891.2	295.6	-177.6	3.47	-1.79	124.53

Company:	Bayswater Exploration & Production, LLC	Local Co-ordinate Reference:	Well Arellano R-10-9HC
Project:	SEC.10-T5N-R65W	TVD Reference:	WELL @ 4638.5ft (RKB - 22.5')
Site:	Arellano 10-L Pad Sec.10-T5N-R65W	MD Reference:	WELL @ 4638.5ft (RKB - 22.5')
Well:	Arellano R-10-9HC	North Reference:	True
Wellbore:	Wellbore #1	Survey Calculation Method:	Minimum Curvature
Design:	Wellbore #1	Database:	EDMNEW

Survey

Measured Depth (ft)	Inclination (°)	Azimuth (°)	Vertical Depth (ft)	+N/-S (ft)	+E/-W (ft)	Vertical Section (ft)	Dogleg Rate (°/100ft)	Build Rate (°/100ft)	Turn Rate (°/100ft)
6,256.0	1.40	267.00	6,165.6	-891.3	294.6	-176.6	1.06	0.85	30.64
6,304.0	2.80	285.30	6,213.5	-891.1	292.9	-175.0	3.20	2.92	38.13
6,352.0	9.10	290.60	6,261.3	-889.4	288.2	-170.5	13.16	13.13	11.04
6,399.0	14.90	285.80	6,307.2	-886.5	278.9	-161.7	12.51	12.34	-10.21
6,447.0	17.10	278.10	6,353.4	-883.8	266.0	-149.2	6.36	4.58	-16.04
6,494.0	20.80	266.20	6,397.8	-883.4	250.8	-134.2	11.35	7.87	-25.32
6,542.0	23.50	267.00	6,442.3	-884.4	232.8	-116.2	5.66	5.63	1.67
6,589.0	25.60	269.10	6,485.0	-885.1	213.3	-96.7	4.84	4.47	4.47
6,637.0	27.70	268.60	6,527.9	-885.5	191.7	-75.3	4.40	4.38	-1.04
6,685.0	31.70	269.30	6,569.6	-885.9	168.0	-51.7	8.36	8.33	1.46
6,733.0	35.90	272.10	6,609.5	-885.6	141.3	-25.3	9.33	8.75	5.83
6,780.0	38.70	271.10	6,646.9	-884.8	112.8	2.8	6.10	5.96	-2.13
6,828.0	41.30	270.20	6,683.6	-884.4	82.0	33.4	5.55	5.42	-1.88
6,875.0	43.60	269.70	6,718.3	-884.5	50.2	64.8	4.95	4.89	-1.06
6,923.0	46.00	269.90	6,752.4	-884.6	16.4	98.4	5.01	5.00	0.42
6,971.0	50.10	269.70	6,784.5	-884.7	-19.3	133.8	8.55	8.54	-0.42
7,019.0	54.50	269.30	6,813.8	-885.1	-57.2	171.5	9.19	9.17	-0.83
7,066.0	58.00	269.90	6,839.9	-885.3	-96.3	210.2	7.52	7.45	1.28
7,114.0	61.60	269.90	6,864.0	-885.4	-137.8	251.4	7.50	7.50	0.00
7,161.0	64.70	270.70	6,885.3	-885.2	-179.7	292.9	6.77	6.60	1.70
7,209.0	67.30	271.30	6,904.8	-884.4	-223.6	336.3	5.54	5.42	1.25
7,257.0	70.30	270.60	6,922.2	-883.7	-268.3	380.6	6.40	6.25	-1.46
7,305.0	76.00	270.90	6,936.1	-883.1	-314.2	426.0	11.89	11.88	0.63
7,352.0	83.20	271.30	6,944.5	-882.2	-360.4	471.7	15.34	15.32	0.85
7,410.0	86.40	272.30	6,949.8	-880.4	-418.1	528.7	5.78	5.52	1.72
7,479.0	87.23	271.89	6,953.6	-877.8	-487.0	596.6	1.34	1.20	-0.59
7,541.0	88.81	271.26	6,955.8	-876.1	-548.9	657.8	2.74	2.55	-1.02
7,635.0	90.57	269.89	6,956.3	-875.2	-642.9	750.9	2.37	1.87	-1.46
7,726.0	90.31	268.75	6,955.6	-876.3	-733.9	841.3	1.28	-0.29	-1.25
7,818.0	89.60	268.43	6,955.7	-878.5	-825.9	932.8	0.85	-0.77	-0.35
7,905.8	88.85	269.81	6,956.8	-879.9	-913.7	1,020.0	1.79	-0.86	1.58
WP #1 (R-10-9HC)									
7,910.0	88.81	269.88	6,956.9	-879.9	-917.8	1,024.1	1.79	-0.86	1.58
8,002.0	89.25	269.86	6,958.5	-880.1	-1,009.8	1,115.4	0.48	0.48	-0.02
8,093.0	89.43	269.51	6,959.5	-880.6	-1,100.8	1,205.7	0.43	0.20	-0.38
8,185.0	90.04	269.32	6,960.0	-881.5	-1,192.8	1,297.0	0.69	0.66	-0.21
8,277.0	89.60	268.83	6,960.3	-883.0	-1,284.8	1,388.4	0.72	-0.48	-0.53
8,368.0	89.34	269.14	6,961.1	-884.6	-1,375.8	1,478.8	0.44	-0.29	0.34
8,459.0	90.04	270.85	6,961.6	-884.7	-1,466.8	1,569.1	2.03	0.77	1.88
8,550.0	89.25	270.50	6,962.1	-883.6	-1,557.8	1,659.1	0.95	-0.87	-0.38
8,641.0	89.16	269.27	6,963.4	-883.8	-1,648.8	1,749.4	1.36	-0.10	-1.35
8,649.3	89.14	269.40	6,963.5	-883.9	-1,657.0	1,757.6	1.55	-0.18	1.54
WP #2 (R-10-9HC)									
8,734.0	88.99	270.70	6,964.9	-883.8	-1,741.7	1,841.6	1.55	-0.18	1.54
8,826.0	90.66	271.33	6,965.2	-882.2	-1,833.7	1,932.6	1.94	1.82	0.68
8,917.0	90.75	271.05	6,964.1	-880.3	-1,924.7	2,022.6	0.32	0.10	-0.31
9,009.0	90.04	269.71	6,963.4	-879.7	-2,016.7	2,113.7	1.65	-0.77	-1.46
9,100.0	90.40	269.03	6,963.1	-880.7	-2,107.7	2,204.0	0.85	0.40	-0.75
9,191.0	89.43	268.49	6,963.2	-882.6	-2,198.7	2,294.5	1.22	-1.07	-0.59
9,214.6	89.34	268.56	6,963.5	-883.2	-2,222.3	2,318.0	0.48	-0.38	0.29
WP #3 (R-10-9HC)									
9,283.0	89.08	268.76	6,964.4	-884.8	-2,290.6	2,386.0	0.48	-0.38	0.29
9,374.0	90.31	268.63	6,964.9	-886.9	-2,381.6	2,476.5	1.36	1.35	-0.14
9,466.0	90.92	269.23	6,963.9	-888.6	-2,473.6	2,567.9	0.93	0.66	0.65

Company:	Bayswater Exploration & Production, LLC	Local Co-ordinate Reference:	Well Arellano R-10-9HC
Project:	SEC.10-T5N-R65W	TVD Reference:	WELL @ 4638.5ft (RKB - 22.5')
Site:	Arellano 10-L Pad Sec.10-T5N-R65W	MD Reference:	WELL @ 4638.5ft (RKB - 22.5')
Well:	Arellano R-10-9HC	North Reference:	True
Wellbore:	Wellbore #1	Survey Calculation Method:	Minimum Curvature
Design:	Wellbore #1	Database:	EDMNEW

Survey

Measured Depth (ft)	Inclination (°)	Azimuth (°)	Vertical Depth (ft)	+N/-S (ft)	+E/-W (ft)	Vertical Section (ft)	Dogleg Rate (°/100ft)	Build Rate (°/100ft)	Turn Rate (°/100ft)
9,558.0	91.01	270.89	6,962.4	-888.5	-2,565.6	2,659.1	1.81	0.10	1.80
9,650.0	92.07	271.75	6,959.9	-886.4	-2,657.5	2,750.0	1.48	1.15	0.93
9,742.0	91.45	270.33	6,957.1	-884.7	-2,749.4	2,840.9	1.68	-0.67	-1.54
9,834.0	91.63	269.75	6,954.6	-884.7	-2,841.4	2,932.1	0.66	0.20	-0.63
9,926.0	92.07	269.98	6,951.6	-884.9	-2,933.4	3,023.3	0.54	0.48	0.25
10,018.0	91.80	271.33	6,948.5	-883.8	-3,025.3	3,114.3	1.50	-0.29	1.47
10,109.0	90.13	270.25	6,947.0	-882.6	-3,116.3	3,204.4	2.19	-1.84	-1.19
10,202.0	90.22	270.04	6,946.7	-882.4	-3,209.3	3,296.6	0.25	0.10	-0.23
10,294.0	88.90	271.34	6,947.4	-881.2	-3,301.3	3,387.6	2.01	-1.43	1.41
10,385.0	89.96	270.48	6,948.3	-879.8	-3,392.2	3,477.7	1.50	1.16	-0.95
10,479.0	90.22	272.08	6,948.2	-877.7	-3,486.2	3,570.6	1.72	0.28	1.70
10,574.0	88.99	271.24	6,948.8	-874.9	-3,581.2	3,664.4	1.57	-1.29	-0.88
10,668.0	90.57	269.87	6,949.2	-874.0	-3,675.2	3,757.4	2.22	1.68	-1.46
10,762.0	90.48	267.95	6,948.3	-875.8	-3,769.1	3,850.9	2.04	-0.10	-2.04
10,857.0	91.19	269.17	6,946.9	-878.2	-3,864.1	3,945.3	1.49	0.75	1.28
10,951.0	90.57	268.65	6,945.5	-880.0	-3,958.1	4,038.7	0.86	-0.66	-0.55
11,046.0	90.31	268.39	6,944.8	-882.5	-4,053.0	4,133.2	0.39	-0.27	-0.27
11,140.0	89.87	269.63	6,944.6	-884.1	-4,147.0	4,226.6	1.40	-0.47	1.32
11,234.0	90.40	269.30	6,944.4	-885.0	-4,241.0	4,319.9	0.66	0.56	-0.35
11,262.3	90.79	269.93	6,944.1	-885.1	-4,269.3	4,348.0	2.63	1.38	2.24
WP #4 (R-10-9HC)									
11,329.0	91.71	271.43	6,942.6	-884.4	-4,336.0	4,414.0	2.63	1.38	2.24
11,423.0	90.57	270.81	6,940.8	-882.5	-4,429.9	4,507.0	1.38	-1.21	-0.66
11,517.0	90.66	270.21	6,939.8	-881.7	-4,523.9	4,600.0	0.65	0.10	-0.64
11,611.0	90.31	269.61	6,939.0	-881.8	-4,617.9	4,693.3	0.74	-0.37	-0.64
11,706.0	90.48	269.74	6,938.3	-882.4	-4,712.9	4,787.5	0.23	0.18	0.14
11,800.0	90.66	269.15	6,937.4	-883.3	-4,806.9	4,880.8	0.66	0.19	-0.63
11,894.0	89.96	269.36	6,936.9	-884.5	-4,900.9	4,974.2	0.78	-0.74	0.22
11,988.0	89.34	268.72	6,937.4	-886.1	-4,994.9	5,067.6	0.95	-0.66	-0.68
12,082.0	89.69	268.39	6,938.2	-888.4	-5,088.8	5,161.1	0.51	0.37	-0.35
12,176.0	89.87	269.86	6,938.6	-889.9	-5,182.8	5,254.5	1.58	0.19	1.56
12,271.0	90.75	270.10	6,938.1	-889.9	-5,277.8	5,348.7	0.96	0.93	0.25
12,365.0	91.10	269.50	6,936.6	-890.2	-5,371.8	5,441.9	0.74	0.37	-0.64
12,460.0	90.57	269.04	6,935.2	-891.5	-5,466.8	5,536.2	0.74	-0.56	-0.48
12,554.0	89.52	268.95	6,935.1	-893.1	-5,560.8	5,629.6	1.12	-1.12	-0.10
12,649.0	89.69	268.17	6,935.8	-895.5	-5,655.8	5,724.1	0.84	0.18	-0.82
12,743.0	89.16	267.30	6,936.7	-899.2	-5,749.7	5,817.7	1.08	-0.56	-0.93
12,837.0	88.02	267.49	6,939.0	-903.5	-5,843.5	5,911.4	1.23	-1.21	0.20
12,931.0	88.29	268.72	6,942.1	-906.6	-5,937.4	6,004.9	1.34	0.29	1.31
13,026.0	89.60	270.89	6,943.8	-906.9	-6,032.4	6,099.1	2.67	1.38	2.28
13,121.0	89.69	271.13	6,944.4	-905.2	-6,127.4	6,193.0	0.27	0.09	0.25
13,215.0	91.01	270.65	6,943.8	-903.8	-6,221.4	6,286.0	1.49	1.40	-0.51
13,310.0	91.80	271.00	6,941.5	-902.4	-6,316.3	6,380.0	0.91	0.83	0.37
13,404.0	90.66	271.19	6,939.5	-900.6	-6,410.3	6,473.0	1.23	-1.21	0.20
13,499.0	90.66	270.78	6,938.4	-899.0	-6,505.3	6,566.9	0.43	0.00	-0.43
13,593.0	91.10	270.67	6,936.9	-897.8	-6,599.3	6,660.0	0.48	0.47	-0.12
13,687.0	90.75	269.67	6,935.4	-897.5	-6,693.3	6,753.1	1.13	-0.37	-1.06
13,781.0	90.92	269.25	6,934.0	-898.4	-6,787.2	6,846.4	0.48	0.18	-0.45
13,880.0	90.92	269.25	6,932.5	-899.7	-6,886.2	6,944.7	0.00	0.00	0.00

BHL 665'FSL & 1960'FEL, Sec.9

Company:	Bayswater Exploration & Production, LLC	Local Co-ordinate Reference:	Well Arellano R-10-9HC
Project:	SEC.10-T5N-R65W	TVD Reference:	WELL @ 4638.5ft (RKB - 22.5')
Site:	Arellano 10-L Pad Sec.10-T5N-R65W	MD Reference:	WELL @ 4638.5ft (RKB - 22.5')
Well:	Arellano R-10-9HC	North Reference:	True
Wellbore:	Wellbore #1	Survey Calculation Method:	Minimum Curvature
Design:	Wellbore #1	Database:	EDMNEW

Design Targets									
Target Name	Dip Angle	Dip Dir.	TVD	+N/-S	+E/-W	Northing	Easting	Latitude	Longitude
- hit/miss target	(°)	(°)	(ft)	(ft)	(ft)	(ft)	(ft)		
- Shape									
SHL 1523'FSL & 325'I	0.00	0.00	1.0	0.0	0.0	1,393,643.03	3,239,146.01	40.410773	-104.641189
- survey hits target center									
- Point									
BHL 665'FSL & 1960'I	0.00	0.00	6,940.0	-901.0	-6,892.6	1,392,675.34	3,232,262.47	40.408297	-104.665940
- survey misses target center by 10.0ft at 13880.0ft MD (6932.5 TVD, -899.7 N, -6886.2 E)									
- Point									

Checked By: _____	Approved By: _____	Date: _____
-------------------	--------------------	-------------