

Bayswater Exploration & Production, LLC

Well Name: **Arellano P-10-9HN**

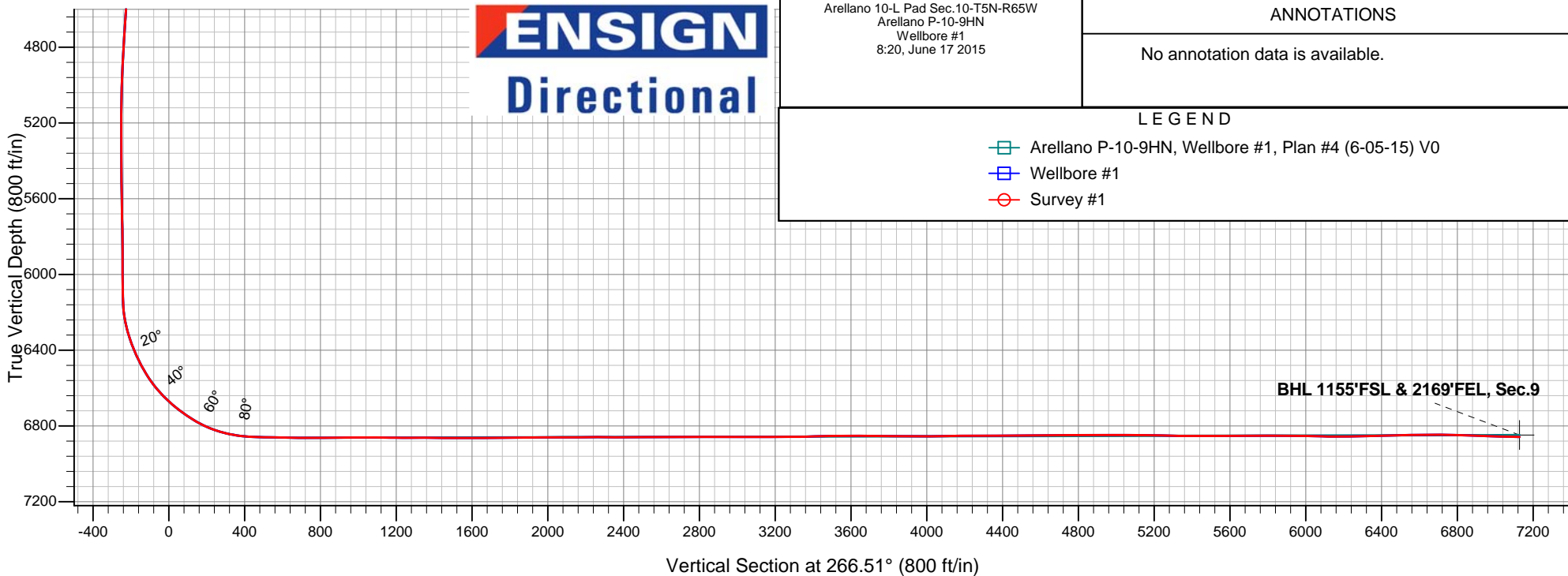
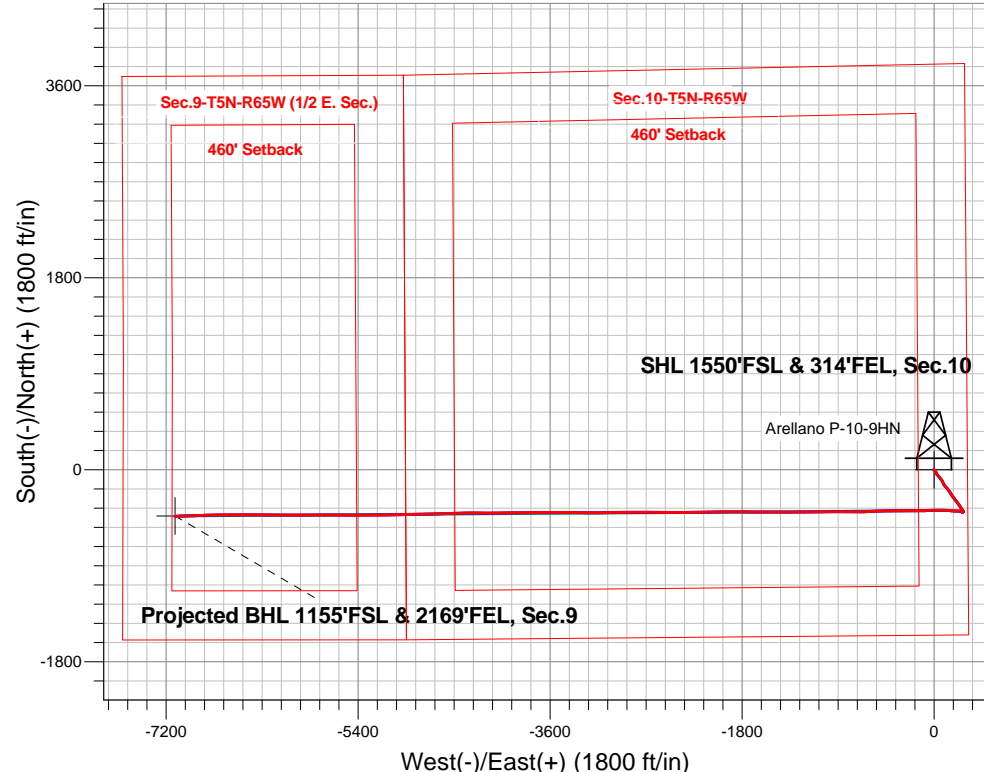
Surface Location: Arellano 10-L Pad Sec.10-T5N-R65W
North American Datum 1983 , US State Plane 1983 , Colorado Northern Zone

Ground Elevation: 4616.0

+N/-S	+E/-W	Northing	Easting	Latitude	Longitude	Slot
0.0	0.0	1393671.17	3239156.04	40.410850	-104.641152	
RKB - 22.5' WELL @ 4638.5ft (RKB - 22.5')						

FINAL SURVEY

Projected Bottom Hole Location
13958'MD 6859'TVD 439'S & 7115'W of SHL
88.3 degree Incl @ 267.5 degree AZM





Bayswater Exploration & Production, LLC

SEC.10-T5N-R65W

Arellano 10-L Pad Sec.10-T5N-R65W

Arellano P-10-9HN

Wellbore #1

Survey: Survey #1

Standard Survey Report

08 July, 2015



BAYSWATER
EXPLORATION & PRODUCTION, LLC

Company:	Bayswater Exploration & Production, LLC	Local Co-ordinate Reference:	Well Arellano P-10-9HN
Project:	SEC.10-T5N-R65W	TVD Reference:	WELL @ 4638.5ft (RKB - 22.5')
Site:	Arellano 10-L Pad Sec.10-T5N-R65W	MD Reference:	WELL @ 4638.5ft (RKB - 22.5')
Well:	Arellano P-10-9HN	North Reference:	True
Wellbore:	Wellbore #1	Survey Calculation Method:	Minimum Curvature
Design:	Wellbore #1	Database:	EDMNEW

Project	SEC.10-T5N-R65W, Weld County, CO		
Map System:	US State Plane 1983	System Datum:	Mean Sea Level
Geo Datum:	North American Datum 1983		Using Well Reference Point
Map Zone:	Colorado Northern Zone		

Site	Arellano 10-L Pad Sec.10-T5N-R65W				
Site Position:		Northing:	1,393,742.11 ft	Latitude:	40.411044
From:	Lat/Long	Easting:	3,239,181.53 ft	Longitude:	-104.641058
Position Uncertainty:	0.0 ft	Slot Radius:	"	Grid Convergence:	0.55 °

Well	Arellano P-10-9HN					
Well Position	+N/-S	0.0 ft	Northing:	1,393,671.17 ft	Latitude:	40.410850
	+E/-W	0.0 ft	Easting:	3,239,156.04 ft	Longitude:	-104.641152
Position Uncertainty		0.0 ft	Wellhead Elevation:	ft	Ground Level:	4,616.0 ft

Wellbore	Wellbore #1				
Magnetics	Model Name	Sample Date	Declination (°)	Dip Angle (°)	Field Strength (nT)
	IGRF2010	6/5/2015	8.26	66.94	52,733

Design	Wellbore #1				
Audit Notes:					
Version:	1.0	Phase:	ACTUAL	Tie On Depth:	0.0
Vertical Section:	Depth From (TVD) (ft)	+N/-S (ft)	+E/-W (ft)	Direction (°)	
	0.0	0.0	0.0	266.51	

Survey Program	Date	6/17/2015			
From (ft)	To (ft)	Survey (Wellbore)	Tool Name	Description	
223.0	13,958.0	Survey #1 (Wellbore #1)	MWD	MWD - Standard	

Survey										
Measured Depth (ft)	Inclination (°)	Azimuth (°)	Vertical Depth (ft)	+N/-S (ft)	+E/-W (ft)	Vertical Section (ft)	Dogleg Rate (°/100ft)	Build Rate (°/100ft)	Turn Rate (°/100ft)	
0.0	0.00	0.00	0.0	0.0	0.0	0.0	0.00	0.00	0.00	
1.0	0.00	220.50	1.0	0.0	0.0	0.0	0.00	0.00	0.00	
SHL 1550'FSL & 314'FEL, Sec.10										
223.0	0.30	220.50	223.0	-0.4	-0.4	0.4	0.14	0.14	0.00	
315.0	0.40	221.50	315.0	-0.9	-0.7	0.8	0.11	0.11	1.09	
407.0	0.10	118.90	407.0	-1.1	-0.9	1.0	0.47	-0.33	-111.52	
499.0	0.10	178.30	499.0	-1.3	-0.8	0.9	0.11	0.00	64.57	
591.0	0.40	219.60	591.0	-1.6	-1.0	1.1	0.36	0.33	44.89	
683.0	0.90	126.60	683.0	-2.3	-0.6	0.8	1.09	0.54	-101.09	
745.0	1.10	119.00	745.0	-2.9	0.3	-0.1	0.39	0.32	-12.26	
829.0	1.10	139.90	829.0	-3.9	1.5	-1.3	0.48	0.00	24.88	
924.0	1.00	131.70	924.0	-5.1	2.7	-2.4	0.19	-0.11	-8.63	
1,020.0	0.90	138.90	1,019.9	-6.2	3.8	-3.4	0.16	-0.10	7.50	

Company:	Bayswater Exploration & Production, LLC	Local Co-ordinate Reference:	Well Arellano P-10-9HN
Project:	SEC.10-T5N-R65W	TVD Reference:	WELL @ 4638.5ft (RKB - 22.5')
Site:	Arellano 10-L Pad Sec.10-T5N-R65W	MD Reference:	WELL @ 4638.5ft (RKB - 22.5')
Well:	Arellano P-10-9HN	North Reference:	True
Wellbore:	Wellbore #1	Survey Calculation Method:	Minimum Curvature
Design:	Wellbore #1	Database:	EDMNEW

Survey

Measured Depth (ft)	Inclination (°)	Azimuth (°)	Vertical Depth (ft)	+N/-S (ft)	+E/-W (ft)	Vertical Section (ft)	Dogleg Rate (°/100ft)	Build Rate (°/100ft)	Turn Rate (°/100ft)
1,115.0	1.00	147.00	1,114.9	-7.5	4.8	-4.3	0.18	0.11	8.53
1,207.0	1.10	158.60	1,206.9	-9.0	5.5	-5.0	0.25	0.11	12.61
1,299.0	2.70	138.90	1,298.9	-11.4	7.3	-6.6	1.85	1.74	-21.41
1,392.0	2.50	141.50	1,391.8	-14.7	10.0	-9.1	0.25	-0.22	2.80
1,484.0	2.20	131.50	1,483.7	-17.4	12.5	-11.5	0.55	-0.33	-10.87
1,576.0	3.20	133.80	1,575.6	-20.4	15.7	-14.4	1.09	1.09	2.50
1,668.0	5.10	157.00	1,667.3	-25.9	19.2	-17.6	2.72	2.07	25.22
1,760.0	6.30	153.80	1,758.9	-34.2	23.0	-20.9	1.35	1.30	-3.48
1,852.0	7.10	152.60	1,850.3	-43.8	27.8	-25.1	0.88	0.87	-1.30
1,944.0	8.20	138.50	1,941.4	-53.7	34.8	-31.5	2.36	1.20	-15.33
2,036.0	8.00	134.80	2,032.5	-63.2	43.7	-39.8	0.61	-0.22	-4.02
2,128.0	8.40	136.10	2,123.6	-72.5	52.9	-48.4	0.48	0.43	1.41
2,220.0	7.90	142.40	2,214.7	-82.4	61.4	-56.3	1.11	-0.54	6.85
2,312.0	6.70	145.20	2,305.9	-91.8	68.3	-62.6	1.36	-1.30	3.04
2,404.0	6.50	155.40	2,397.3	-100.9	73.6	-67.3	1.29	-0.22	11.09
2,497.0	7.50	154.70	2,489.6	-111.2	78.4	-71.4	1.08	1.08	-0.75
2,592.0	8.20	152.20	2,583.7	-122.8	84.2	-76.5	0.82	0.74	-2.63
2,687.0	9.50	151.90	2,677.6	-135.7	91.0	-82.6	1.37	1.37	-0.32
2,782.0	9.80	145.90	2,771.2	-149.3	99.2	-90.0	1.10	0.32	-6.32
2,877.0	8.50	142.40	2,865.0	-161.6	108.1	-98.0	1.49	-1.37	-3.68
2,972.0	8.60	139.60	2,959.0	-172.6	116.9	-106.2	0.45	0.11	-2.95
3,068.0	8.20	136.10	3,053.9	-183.0	126.3	-115.0	0.68	-0.42	-3.65
3,163.0	6.90	136.80	3,148.1	-192.0	134.9	-123.0	1.37	-1.37	0.74
3,258.0	6.70	149.80	3,242.5	-200.9	141.6	-129.1	1.63	-0.21	13.68
3,353.0	7.10	147.50	3,336.8	-210.7	147.6	-134.5	0.51	0.42	-2.42
3,448.0	7.50	142.40	3,431.0	-220.5	154.5	-140.8	0.80	0.42	-5.37
3,544.0	7.10	148.60	3,526.2	-230.6	161.4	-147.1	0.92	-0.42	6.46
3,639.0	7.50	147.90	3,620.5	-240.8	167.8	-152.8	0.43	0.42	-0.74
3,734.0	8.20	148.90	3,714.6	-251.9	174.6	-158.9	0.75	0.74	1.05
3,829.0	8.70	140.80	3,808.5	-263.3	182.6	-166.3	1.36	0.53	-8.53
3,924.0	8.60	142.80	3,902.5	-274.5	191.5	-174.4	0.33	-0.11	2.11
4,019.0	8.20	138.70	3,996.4	-285.2	200.2	-182.5	0.76	-0.42	-4.32
4,115.0	7.60	144.30	4,091.5	-295.5	208.4	-190.1	1.02	-0.63	5.83
4,210.0	7.90	144.90	4,185.7	-306.0	215.9	-196.8	0.33	0.32	0.63
4,305.0	7.30	138.50	4,279.8	-315.8	223.6	-204.0	1.09	-0.63	-6.74
4,400.0	6.70	151.00	4,374.1	-325.2	230.3	-210.1	1.72	-0.63	13.16
4,495.0	7.40	142.00	4,468.4	-334.9	236.8	-215.9	1.37	0.74	-9.47
4,591.0	7.60	145.60	4,563.6	-345.0	244.2	-222.7	0.53	0.21	3.75
4,686.0	7.90	145.40	4,657.7	-355.5	251.4	-229.3	0.32	0.32	-0.21
4,781.0	7.20	150.70	4,751.9	-366.1	258.0	-235.3	1.04	-0.74	5.58
4,876.0	6.20	142.00	4,846.2	-375.3	264.1	-240.8	1.50	-1.05	-9.16
4,971.0	4.80	151.40	4,940.8	-382.9	269.2	-245.4	1.75	-1.47	9.89
5,067.0	3.50	144.20	5,036.6	-388.8	272.8	-248.6	1.46	-1.35	-7.50
5,162.0	1.50	157.00	5,131.5	-392.3	275.0	-250.6	2.17	-2.11	13.47
5,256.0	0.40	235.70	5,225.5	-393.6	275.2	-250.7	1.57	-1.17	83.72
5,351.0	0.40	193.90	5,320.4	-394.1	274.8	-250.3	0.30	0.00	-44.00
5,447.0	0.80	184.80	5,416.4	-395.1	274.7	-250.1	0.43	0.42	-9.48
5,542.0	1.10	298.10	5,511.4	-395.3	273.8	-249.3	1.68	0.32	119.26
5,637.0	0.80	256.80	5,606.4	-395.1	272.4	-247.8	0.76	-0.32	-43.47
5,732.0	1.10	233.50	5,701.4	-395.7	271.0	-246.4	0.51	0.32	-24.53
5,827.0	1.00	229.60	5,796.4	-396.8	269.7	-245.0	0.13	-0.11	-4.11
5,922.0	1.10	222.40	5,891.4	-398.0	268.4	-243.7	0.17	0.11	-7.58
6,017.0	0.50	205.00	5,986.4	-399.1	267.6	-242.8	0.67	-0.63	-18.32
6,112.0	0.40	330.10	6,081.4	-399.2	267.3	-242.5	0.84	-0.11	131.68

Company:	Bayswater Exploration & Production, LLC	Local Co-ordinate Reference:	Well Arellano P-10-9HN
Project:	SEC.10-T5N-R65W	TVD Reference:	WELL @ 4638.5ft (RKB - 22.5')
Site:	Arellano 10-L Pad Sec.10-T5N-R65W	MD Reference:	WELL @ 4638.5ft (RKB - 22.5')
Well:	Arellano P-10-9HN	North Reference:	True
Wellbore:	Wellbore #1	Survey Calculation Method:	Minimum Curvature
Design:	Wellbore #1	Database:	EDMNEW

Survey

Measured Depth (ft)	Inclination (°)	Azimuth (°)	Vertical Depth (ft)	+N/-S (ft)	+E/-W (ft)	Vertical Section (ft)	Dogleg Rate (°/100ft)	Build Rate (°/100ft)	Turn Rate (°/100ft)
6,160.0	1.40	303.20	6,129.4	-398.7	266.7	-241.9	2.21	2.08	-56.04
6,207.0	5.50	295.70	6,176.3	-397.4	264.2	-239.5	8.76	8.72	-15.96
6,255.0	9.80	295.00	6,223.8	-394.7	258.4	-233.9	8.96	8.96	-1.46
6,302.0	14.20	283.40	6,269.8	-391.7	249.2	-224.9	10.63	9.36	-24.68
6,350.0	16.50	282.10	6,316.1	-388.9	236.8	-212.7	4.84	4.79	-2.71
6,397.0	19.90	269.70	6,360.7	-387.5	222.2	-198.2	10.93	7.23	-26.38
6,445.0	23.00	270.00	6,405.4	-387.6	204.7	-180.7	6.46	6.46	0.63
6,493.0	25.90	273.90	6,449.1	-386.8	184.9	-161.0	6.91	6.04	8.13
6,541.0	29.70	276.50	6,491.6	-384.8	162.6	-138.8	8.31	7.92	5.42
6,588.0	31.30	274.80	6,532.1	-382.4	138.8	-115.3	3.87	3.40	-3.62
6,635.0	36.10	269.80	6,571.2	-381.5	112.8	-89.4	11.79	10.21	-10.64
6,683.0	40.60	271.20	6,608.8	-381.2	83.0	-59.7	9.55	9.38	2.92
6,731.0	45.00	269.10	6,644.0	-381.1	50.4	-27.1	9.64	9.17	-4.38
6,779.0	48.00	268.60	6,677.0	-381.8	15.6	7.7	6.30	6.25	-1.04
6,827.0	51.60	269.10	6,708.0	-382.6	-21.0	44.3	7.54	7.50	1.04
6,874.0	54.50	269.50	6,736.3	-383.0	-58.6	81.8	6.21	6.17	0.85
6,922.0	57.60	268.30	6,763.1	-383.8	-98.4	121.6	6.78	6.46	-2.50
6,969.0	61.90	269.50	6,786.7	-384.6	-139.0	162.1	9.41	9.15	2.55
7,017.0	66.60	269.80	6,807.6	-384.8	-182.2	205.3	9.81	9.79	0.63
7,065.0	71.60	269.80	6,824.7	-385.0	-227.0	250.0	10.42	10.42	0.00
7,113.0	76.00	270.00	6,838.1	-385.1	-273.1	296.0	9.18	9.17	0.42
7,160.0	80.10	270.20	6,847.8	-385.0	-319.1	341.9	8.73	8.72	0.43
7,208.0	83.60	269.80	6,854.6	-385.0	-366.6	389.3	7.34	7.29	-0.83
7,250.0	87.50	269.00	6,857.9	-385.4	-408.4	431.1	9.48	9.29	-1.90
7,338.0	89.40	268.80	6,860.3	-387.1	-496.4	519.0	2.17	2.16	-0.23
7,432.0	88.40	266.10	6,862.1	-391.3	-590.3	613.0	3.06	-1.06	-2.87
7,526.0	90.10	269.50	6,863.3	-394.9	-684.2	706.9	4.04	1.81	3.62
7,620.0	89.70	271.10	6,863.5	-394.4	-778.2	800.7	1.75	-0.43	1.70
7,712.0	90.80	269.80	6,863.1	-393.7	-870.2	892.5	1.85	1.20	-1.41
7,804.0	91.10	268.90	6,861.5	-394.7	-962.1	984.4	1.03	0.33	-0.98
7,896.0	89.50	269.30	6,861.1	-396.2	-1,054.1	1,076.3	1.79	-1.74	0.43
7,987.0	88.70	271.10	6,862.5	-395.8	-1,145.1	1,167.1	2.16	-0.88	1.98
8,079.0	90.40	269.10	6,863.2	-395.7	-1,237.1	1,258.9	2.85	1.85	-2.17
8,171.0	90.00	268.20	6,862.9	-397.9	-1,329.1	1,350.8	1.07	-0.43	-0.98
8,263.0	89.60	270.70	6,863.2	-398.7	-1,421.1	1,442.7	2.75	-0.43	2.72
8,354.0	88.90	270.30	6,864.4	-397.9	-1,512.0	1,533.5	0.89	-0.77	-0.44
8,444.0	90.70	270.70	6,864.7	-397.2	-1,602.0	1,623.2	2.05	2.00	0.44
8,536.0	90.90	270.90	6,863.4	-395.9	-1,694.0	1,715.0	0.31	0.22	0.22
8,627.0	90.70	270.30	6,862.2	-394.9	-1,785.0	1,805.7	0.69	-0.22	-0.66
8,719.0	90.00	269.80	6,861.6	-394.8	-1,877.0	1,897.6	0.94	-0.76	-0.54
8,811.0	89.80	269.60	6,861.8	-395.3	-1,969.0	1,989.4	0.31	-0.22	-0.22
8,903.0	90.40	268.80	6,861.6	-396.6	-2,061.0	2,081.3	1.09	0.65	-0.87
8,994.0	90.90	268.40	6,860.6	-398.8	-2,152.0	2,172.2	0.70	0.55	-0.44
9,085.0	90.10	270.00	6,859.8	-400.1	-2,242.9	2,263.1	1.97	-0.88	1.76
9,177.0	89.50	269.50	6,860.1	-400.5	-2,334.9	2,355.0	0.85	-0.65	-0.54
9,268.0	90.00	269.10	6,860.5	-401.6	-2,425.9	2,445.9	0.70	0.55	-0.44
9,360.0	90.90	272.30	6,859.8	-400.5	-2,517.9	2,537.6	3.61	0.98	3.48
9,452.0	89.90	269.60	6,859.1	-399.0	-2,609.9	2,629.3	3.13	-1.09	-2.93
9,543.0	90.00	269.60	6,859.2	-399.6	-2,700.9	2,720.2	0.11	0.11	0.00
9,636.0	90.70	269.10	6,858.6	-400.7	-2,793.9	2,813.1	0.92	0.75	-0.54
9,727.0	89.20	270.20	6,858.7	-401.2	-2,884.9	2,903.9	2.04	-1.65	1.21
9,819.0	90.40	269.60	6,859.0	-401.4	-2,976.9	2,995.8	1.46	1.30	-0.65
9,911.0	89.80	269.10	6,858.9	-402.4	-3,068.9	3,087.7	0.85	-0.65	-0.54
10,003.0	90.70	270.00	6,858.5	-403.1	-3,160.9	3,179.5	1.38	0.98	0.98

Company:	Bayswater Exploration & Production, LLC	Local Co-ordinate Reference:	Well Arellano P-10-9HN
Project:	SEC.10-T5N-R65W	TVD Reference:	WELL @ 4638.5ft (RKB - 22.5')
Site:	Arellano 10-L Pad Sec.10-T5N-R65W	MD Reference:	WELL @ 4638.5ft (RKB - 22.5')
Well:	Arellano P-10-9HN	North Reference:	True
Wellbore:	Wellbore #1	Survey Calculation Method:	Minimum Curvature
Design:	Wellbore #1	Database:	EDMNEW

Survey

Measured Depth (ft)	Inclination (°)	Azimuth (°)	Vertical Depth (ft)	+N/-S (ft)	+E/-W (ft)	Vertical Section (ft)	Dogleg Rate (°/100ft)	Build Rate (°/100ft)	Turn Rate (°/100ft)
10,095.0	89.80	269.10	6,858.1	-403.9	-3,252.8	3,271.4	1.38	-0.98	-0.98
10,187.0	91.30	270.90	6,857.2	-403.9	-3,344.8	3,363.2	2.55	1.63	1.96
10,279.0	91.40	270.50	6,855.0	-402.7	-3,436.8	3,454.9	0.45	0.11	-0.43
10,371.0	90.90	271.60	6,853.2	-401.1	-3,528.8	3,546.6	1.31	-0.54	1.20
10,465.0	89.80	269.60	6,852.6	-400.1	-3,622.8	3,640.4	2.43	-1.17	-2.13
10,560.0	89.50	269.50	6,853.2	-400.8	-3,717.8	3,735.3	0.33	-0.32	-0.11
10,654.0	89.00	269.10	6,854.4	-402.0	-3,811.7	3,829.1	0.68	-0.53	-0.43
10,748.0	89.30	268.60	6,855.8	-403.8	-3,905.7	3,923.0	0.62	0.32	-0.53
10,842.0	90.70	269.10	6,855.8	-405.7	-3,999.7	4,017.0	1.58	1.49	0.53
10,937.0	91.50	268.80	6,854.0	-407.5	-4,094.6	4,111.9	0.90	0.84	-0.32
11,031.0	90.30	270.70	6,852.5	-407.9	-4,188.6	4,205.7	2.39	-1.28	2.02
11,125.0	90.00	271.20	6,852.3	-406.3	-4,282.6	4,299.4	0.62	-0.32	0.53
11,220.0	90.80	268.80	6,851.6	-406.3	-4,377.6	4,394.2	2.66	0.84	-2.53
11,314.0	89.30	267.70	6,851.5	-409.2	-4,471.6	4,488.2	1.98	-1.60	-1.17
11,409.0	90.70	268.80	6,851.5	-412.1	-4,566.5	4,583.1	1.87	1.47	1.16
11,503.0	91.40	269.10	6,849.8	-413.8	-4,660.5	4,677.0	0.81	0.74	0.32
11,597.0	90.10	268.90	6,848.6	-415.5	-4,754.5	4,770.9	1.40	-1.38	-0.21
11,691.0	90.10	268.20	6,848.4	-417.8	-4,848.4	4,864.9	0.74	0.00	-0.74
11,786.0	90.10	268.20	6,848.2	-420.8	-4,943.4	4,959.8	0.00	0.00	0.00
11,879.0	89.70	267.90	6,848.4	-424.0	-5,036.3	5,052.8	0.54	-0.43	-0.32
11,974.0	88.90	269.30	6,849.6	-426.3	-5,131.3	5,147.7	1.70	-0.84	1.47
12,068.0	89.10	270.50	6,851.2	-426.5	-5,225.3	5,241.5	1.29	0.21	1.28
12,162.0	88.60	270.00	6,853.1	-426.1	-5,319.2	5,335.3	0.75	-0.53	-0.53
12,257.0	90.10	270.30	6,854.2	-425.8	-5,414.2	5,430.1	1.61	1.58	0.32
12,351.0	90.50	270.20	6,853.7	-425.4	-5,508.2	5,523.9	0.44	0.43	-0.11
12,445.0	90.80	270.00	6,852.6	-425.2	-5,602.2	5,617.7	0.38	0.32	-0.21
12,540.0	90.20	270.00	6,851.8	-425.2	-5,697.2	5,712.5	0.63	-0.63	0.00
12,633.0	89.10	268.90	6,852.3	-426.1	-5,790.2	5,805.4	1.67	-1.18	-1.18
12,728.0	89.70	271.10	6,853.3	-426.1	-5,885.2	5,900.2	2.40	0.63	2.32
12,822.0	89.30	270.00	6,854.2	-425.2	-5,979.2	5,994.0	1.25	-0.43	-1.17
12,916.0	88.80	269.30	6,855.7	-425.8	-6,073.2	6,087.8	0.92	-0.53	-0.74
13,010.0	90.50	270.90	6,856.3	-425.6	-6,167.2	6,181.6	2.48	1.81	1.70
13,104.0	91.50	270.70	6,854.6	-424.3	-6,261.1	6,275.4	1.08	1.06	-0.21
13,197.0	90.60	270.50	6,852.9	-423.4	-6,354.1	6,368.1	0.99	-0.97	-0.22
13,292.0	91.10	270.50	6,851.5	-422.5	-6,449.1	6,462.9	0.53	0.53	0.00
13,386.0	92.00	269.60	6,849.0	-422.4	-6,543.1	6,556.7	1.35	0.96	-0.96
13,480.0	90.70	268.80	6,846.8	-423.8	-6,637.0	6,650.5	1.62	-1.38	-0.85
13,574.0	88.90	269.30	6,847.1	-425.3	-6,731.0	6,744.4	1.99	-1.91	0.53
13,668.0	87.90	268.20	6,849.7	-427.4	-6,825.0	6,838.3	1.58	-1.06	-1.17
13,762.0	88.10	267.50	6,853.0	-430.9	-6,918.8	6,932.2	0.77	0.21	-0.74
13,856.0	88.20	267.70	6,856.0	-434.8	-7,012.7	7,026.2	0.24	0.11	0.21
13,903.0	88.30	267.50	6,857.5	-436.8	-7,059.6	7,073.1	0.48	0.21	-0.43
13,958.0	88.30	267.50	6,859.1	-439.2	-7,114.6	7,128.1	0.00	0.00	0.00

BHL 1160'FSL & 2170'FEL, Sec.9

Company:	Bayswater Exploration & Production, LLC	Local Co-ordinate Reference:	Well Arellano P-10-9HN
Project:	SEC.10-T5N-R65W	TVD Reference:	WELL @ 4638.5ft (RKB - 22.5')
Site:	Arellano 10-L Pad Sec.10-T5N-R65W	MD Reference:	WELL @ 4638.5ft (RKB - 22.5')
Well:	Arellano P-10-9HN	North Reference:	True
Wellbore:	Wellbore #1	Survey Calculation Method:	Minimum Curvature
Design:	Wellbore #1	Database:	EDMNEW

Design Targets									
Target Name	Dip Angle	Dip Dir.	TVD	+N/-S	+E/-W	Northing	Easting	Latitude	Longitude
- hit/miss target	(°)	(°)	(ft)	(ft)	(ft)	(ft)	(ft)		
- Shape									
SHL 1550'FSL & 314'I	0.00	0.00	1.0	0.0	0.0	1,393,671.18	3,239,156.04	40.410850	-104.641152
- survey hits target center									
- Point									
BHL 1160'FSL & 217'C	0.00	0.00	6,848.5	-433.9	-7,115.2	1,393,168.34	3,232,045.37	40.409656	-104.666703
- survey misses target center by 11.9ft at 13958.0ft MD (6859.1 TVD, -439.2 N, -7114.6 E)									
- Point									

Checked By: _____	Approved By: _____	Date: _____
-------------------	--------------------	-------------