



12/15/2014  
DAY 02  
0 FT/24HRS

MD

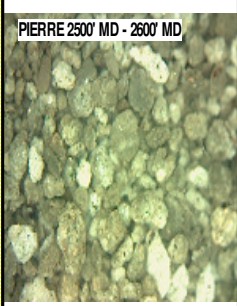
WOB 11.3K  
PP 3140  
RPM 61  
SPM 85/84

0 2000  
0 250  
GDP (Ft/Hr)  
Gamma (API)

MD 2592 TVD 2591.69  
INC 0.8 AZ 296.35  
VS -12.08

MD 2687 TVD 2686.68  
INC 0.9 AZ 293.25  
VS -11.31

2500  
2550  
2600  
2650  
2700



PIERRE 2500' MD - 2600' MD

@ 11:25 PM ON 12/15/2014 W/BIT # 2,  
8.75", SMITH SDi519 (S/N) JJ7996 IN  
@ 1211' MD.

### PIERRE BEFORE LOGGING DEPTH

2500' MD-2600' MD: SLTST: 55% LTGY  
- MEDLTGY, FRI, FN TO MED GRN,  
W SRTD, CALC CMT, SANDY, IMBD  
PYR, INTGR POR, NO STN, NO  
FLOR, NO O FLOR, NO CUT, NO  
RNG

2600' MD-2700' MD: SLTST: 60% LTGY  
- MEDLTGY, FRI, FN TO MED GRN,  
W SRTD, CALC CMT, SANDY, IMBD  
PYR, INTGR POR, NO STN, NO  
FLOR, NO O FLOR, NO CUT, NO  
RNG

DEPTH 1211'  
WT 8.60  
VIS 29  
PH 10.8  
FIL 27.7  
CL 1700  
CAL 100  
H2O 97.8  
OIL 0.0  
LGS 16.9  
GEL 2/3/3  
PV 3  
YP 4  
CK 3/0  
SOL1.9

CG 47u

TG, C1-C4

CG 47u

12:01AM  
12/16/2014  
DAY 03  
245 FT/24HRS  
WOB 20.4K  
PP 3215  
RPM 62  
SPM 84/84

MD 2782 TVD 2781.66  
INC 1.82 AZ 275.9  
VS -10.55

ROP (ft/Hr)  
Gamma (API)

MD 2877 TVD 2876.53  
INC 3.85 AZ 273.37  
VS -9.53



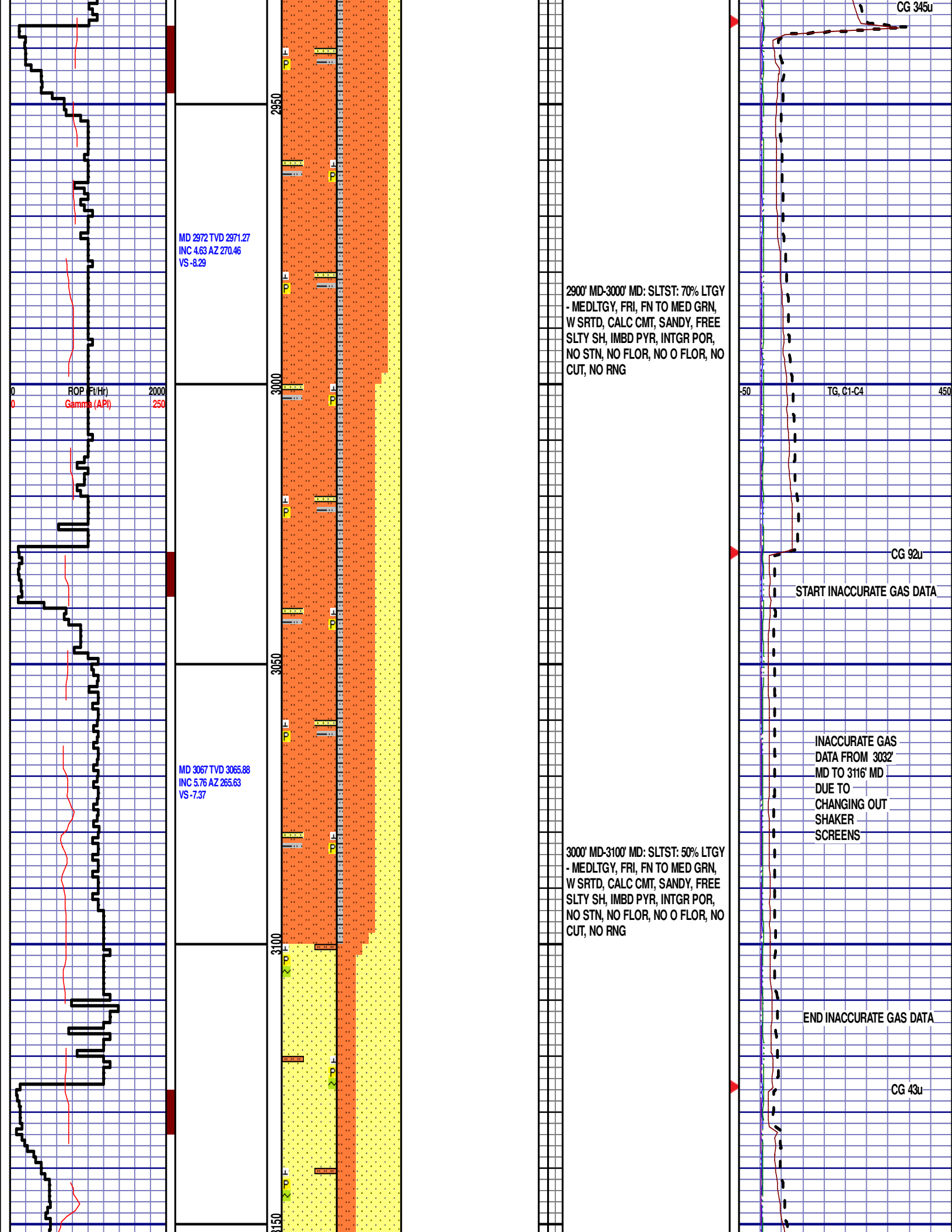
2700' MD-2800' MD: SLTST: 70% LTGY  
- MEDLTGY, FRI, FN TO MED GRN,  
W SRTD, CALC CMT, SANDY, IMBD  
PYR, INTGR POR, NO STN, NO  
FLOR, NO O FLOR, NO CUT, NO  
RNG

2800' MD-2900' MD: SLTST: 70% LTGY  
- MEDLTGY, FRI, FN TO MED GRN,  
W SRTD, CALC CMT, SANDY, FREE  
SLTY SH, IMBD PYR, INTGR POR,  
NO STN, NO FLOR, NO O FLOR, NO  
CUT, NO RNG

Scale Change  
TG, C1-C4  
GAS SCALE: -50u TO 450u  
(50 UNITS/DIVISION)

CG 65u

CG 63u



MD 2972 TVD 2971.27  
INC 4.63 AZ 270.46  
VS -8.29

ROP (ft/hr)  
Gamma (API)

MD 3067 TVD 3065.88  
INC 5.76 AZ 265.63  
VS -7.37

2900' MD-3000' MD: SLTST: 70% LTGY  
- MEDLTGY, FRI, FN TO MED GRN,  
W SRTD, CALC CMT, SANDY, FREE  
SLTY SH, IMBD PYR, INTGR POR,  
NO STN, NO FLOR, NO O FLOR, NO  
CUT, NO RNG

3000' MD-3100' MD: SLTST: 50% LTGY  
- MEDLTGY, FRI, FN TO MED GRN,  
W SRTD, CALC CMT, SANDY, FREE  
SLTY SH, IMBD PYR, INTGR POR,  
NO STN, NO FLOR, NO O FLOR, NO  
CUT, NO RNG

START INACCURATE GAS DATA

INACCURATE GAS  
DATA FROM 3032  
MD TO 3116' MD  
DUE TO  
CHANGING OUT  
SHAKER  
SCREENS

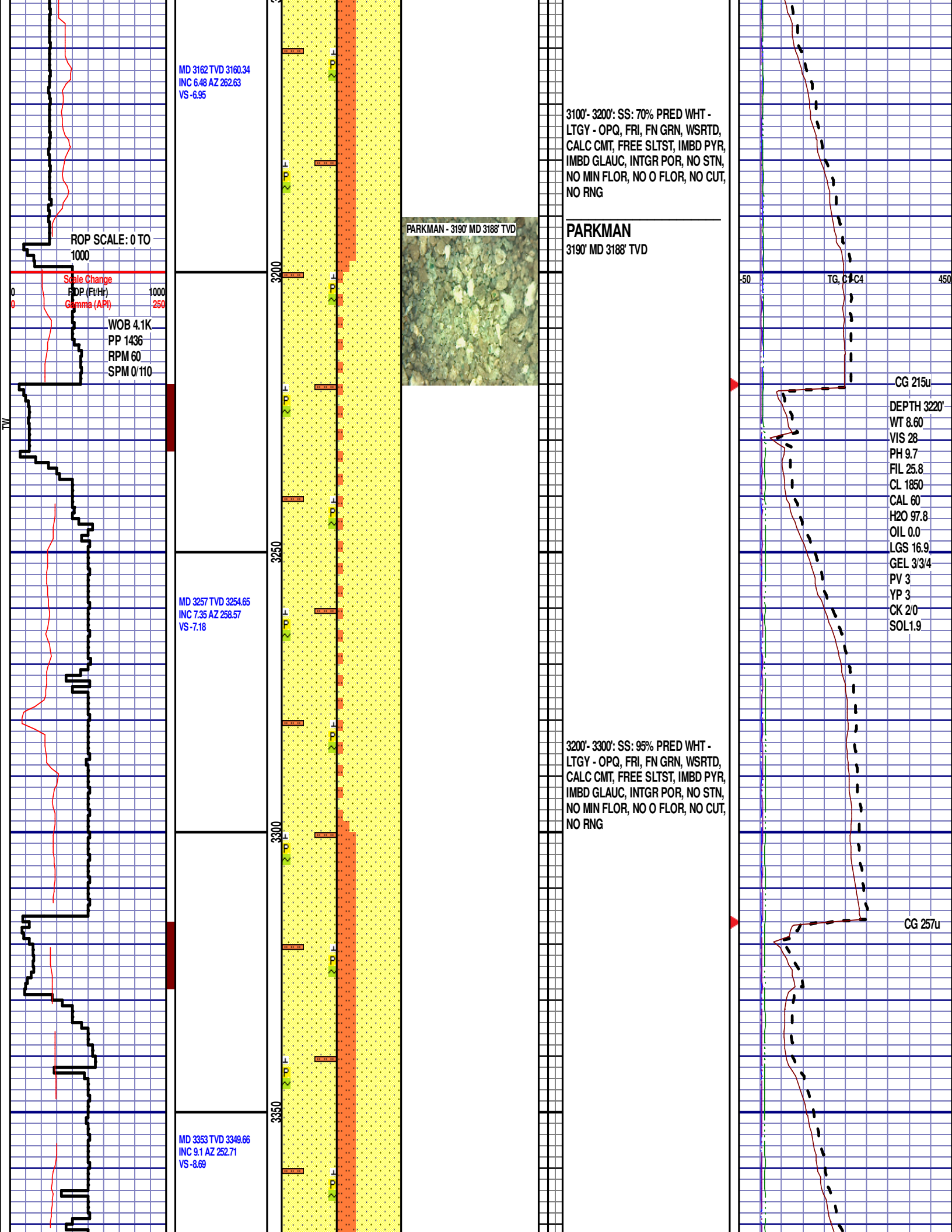
END INACCURATE GAS DATA

CG 43u

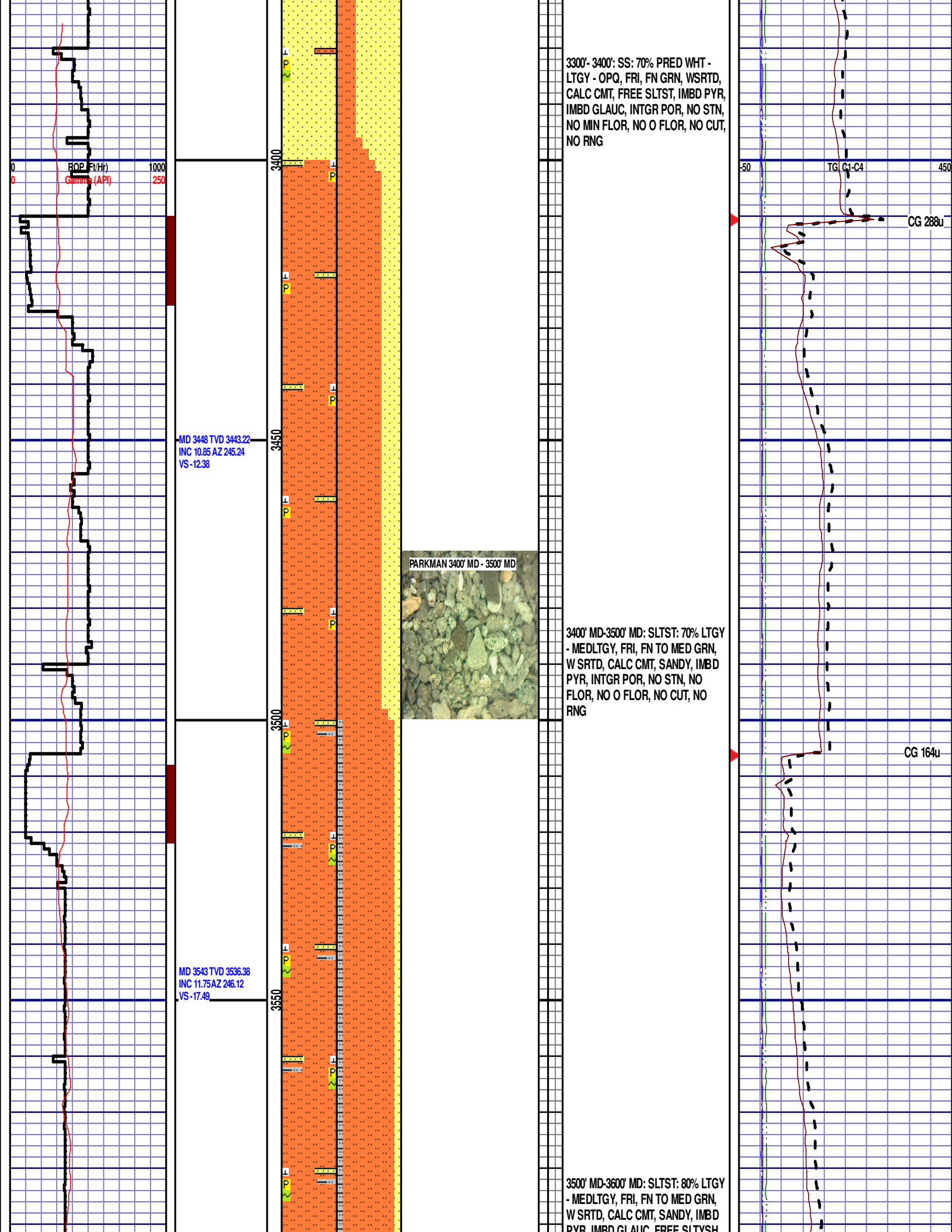
CG 92u

TG, C1-C4

CG 345u

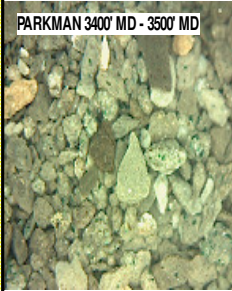






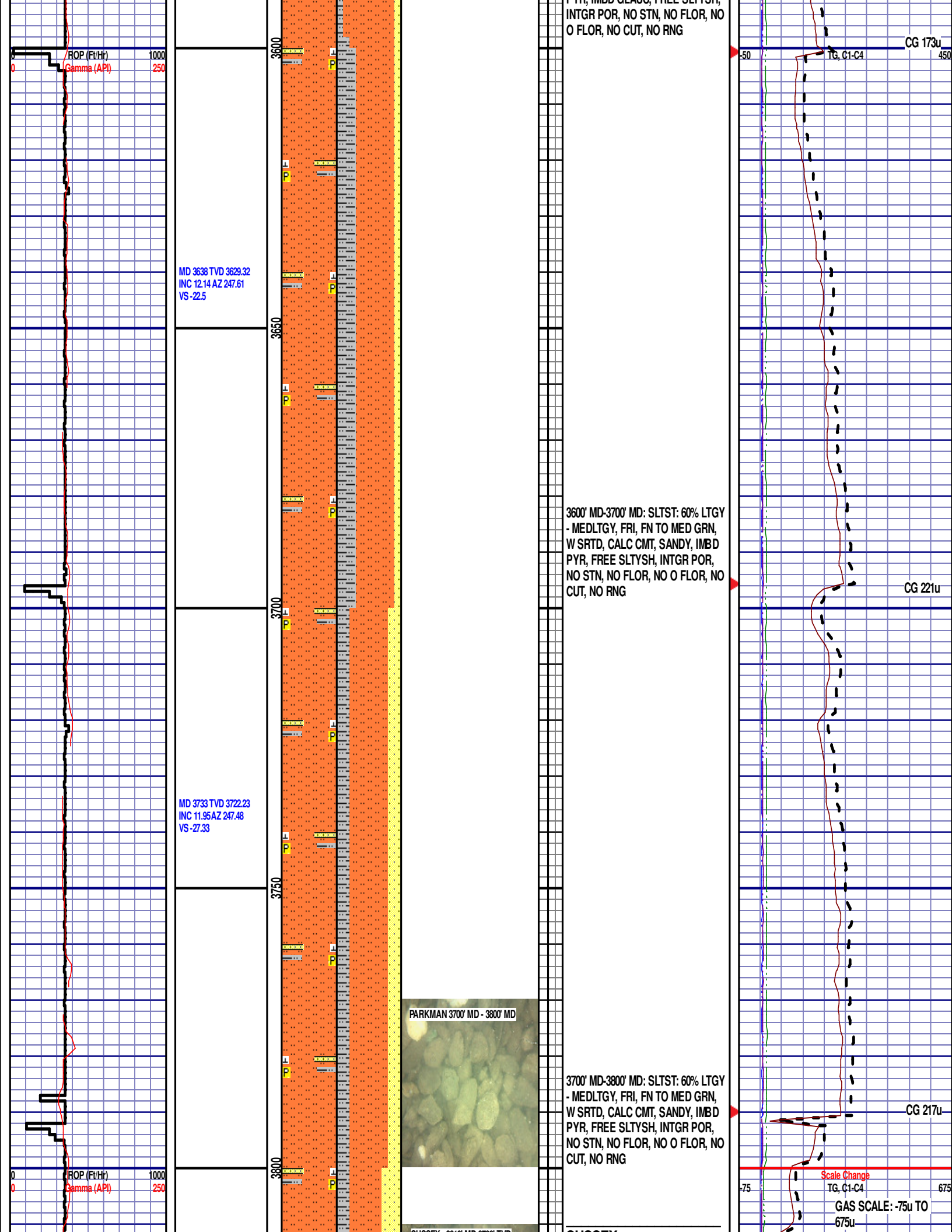
3300'- 3400': SS: 70% PRED WHT -  
LTGY - OPQ, FRI, FN GRN, WSRTD,  
CALC CMT, FREE SLTST, IMBD PYR,  
IMBD GLAUC, INTGR POR, NO STN,  
NO MIN FLOR, NO O FLOR, NO CUT,  
NO RNG

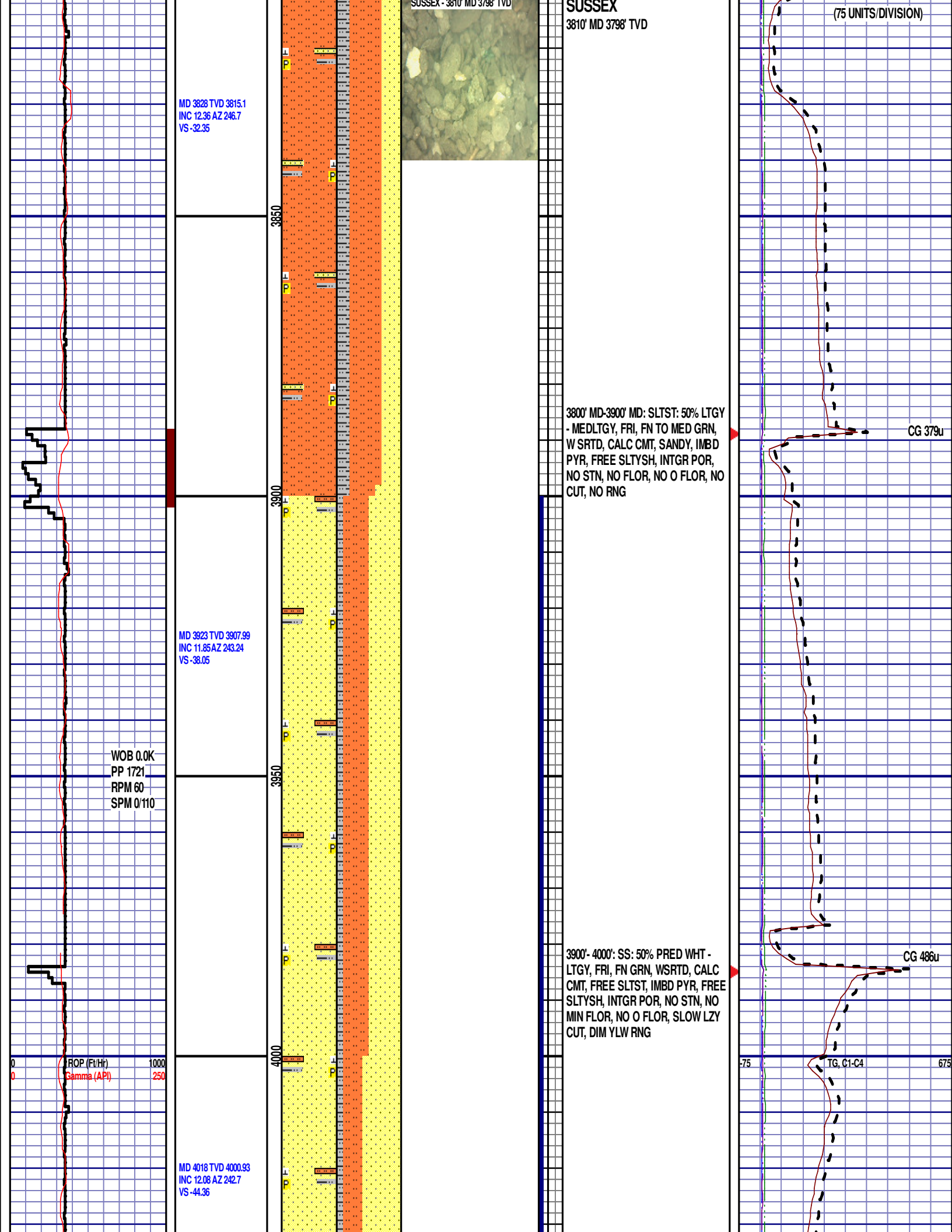
PARKMAN 3400' MD - 3500' MD



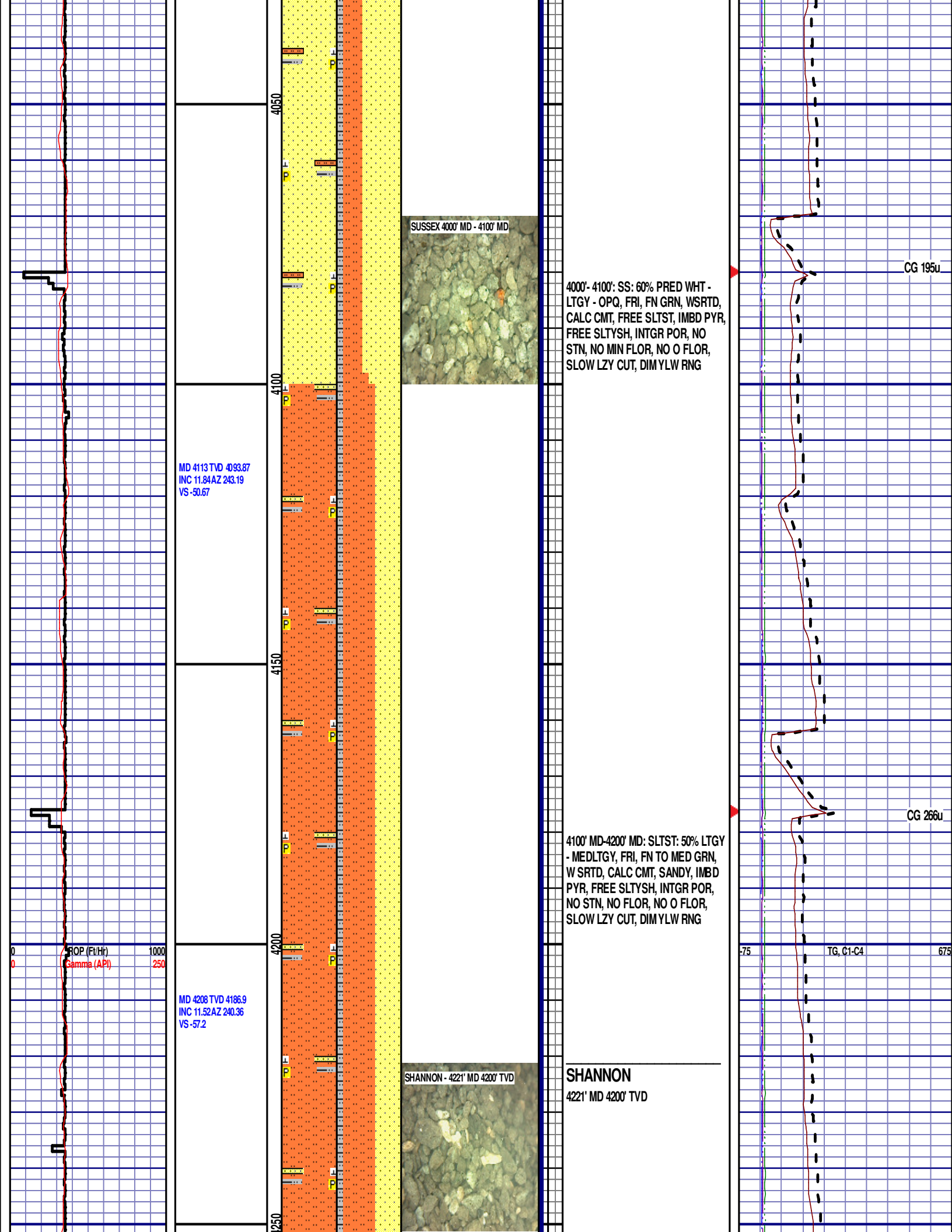
3400' MD-3500' MD: SLTST: 70% LTGY  
- MEDLTGY, FRI, FN TO MED GRN,  
WSRTD, CALC CMT, SANDY, IMBD  
PYR, INTGR POR, NO STN, NO  
FLOR, NO O FLOR, NO CUT, NO  
RNG

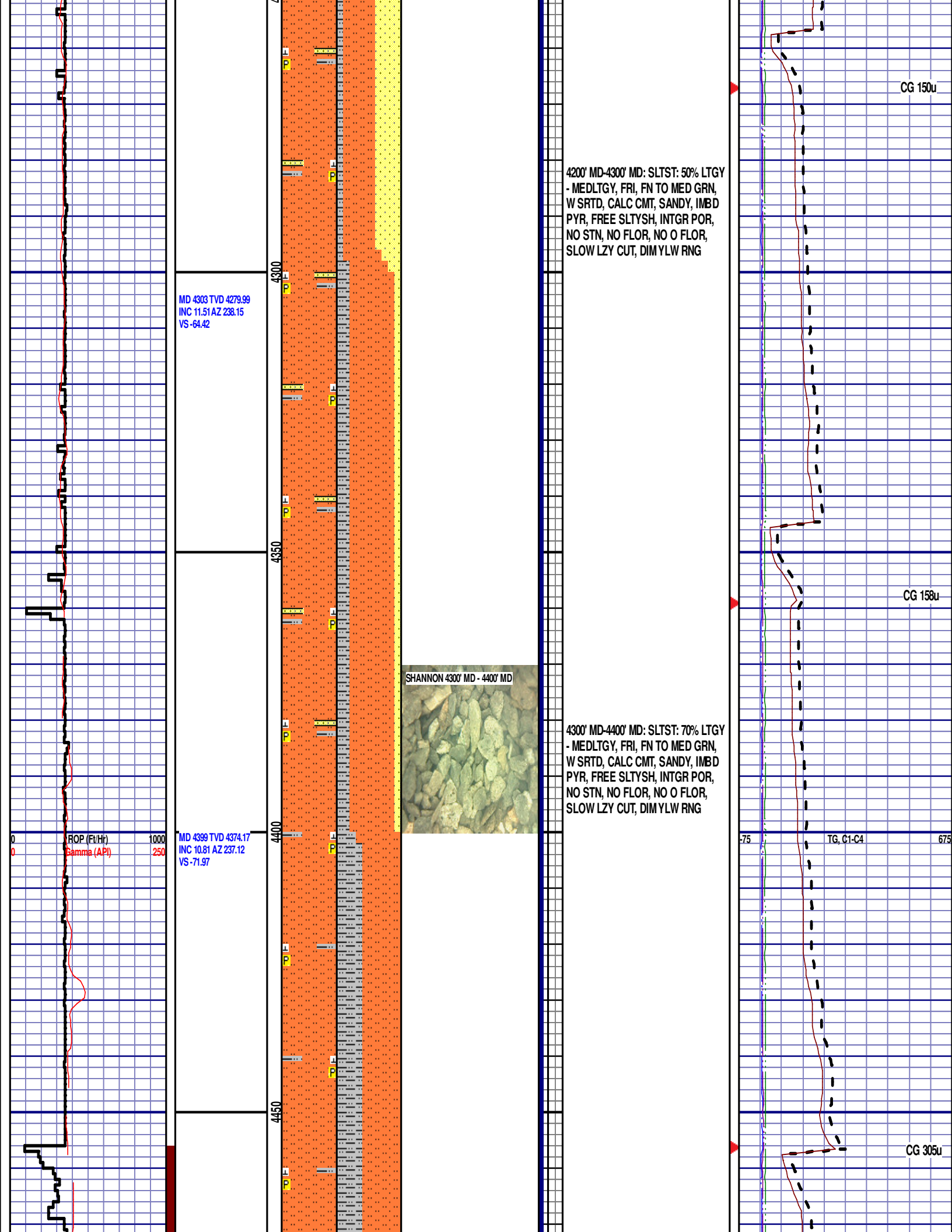
3500' MD-3600' MD: SLTST: 80% LTGY  
- MEDLTGY, FRI, FN TO MED GRN,  
WSRTD, CALC CMT, SANDY, IMBD  
PYR, IMBD GLAUC, FREE SITYSH











MD 4494 TVD 4467.27  
INC 12.16 AZ 244.37  
VS -78.64

MD 4589 TVD 4560.47  
INC 10.19 AZ 244.16  
VS -84.14

MD 4684 TVD 4653.99  
INC 10.06 AZ 241.95  
VS -89.46

ROP (Ft/Hr)  
Gamma (API)

1000  
250

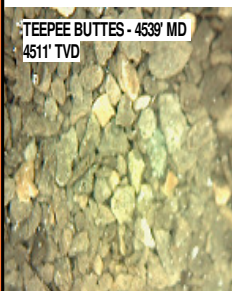
4500

4550

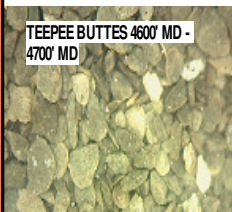
4600

4650

TEEPEE BUTTES - 4539' MD  
4511' TVD



TEEPEE BUTTES 4600' MD -  
4700' MD



4400' MD-4500' MD: SLTST: 60% LTGY  
- MEDLTGY, FRI, FN TO MED GRN,  
W SRTD, CALC CMT, IMBD PYR,  
FREE SLTYSH, INTGR POR, NO  
STN, NO FLOR, NO O FLOR, SLOW  
LZY CUT, DIMYLW RNG

TEEPEE BUTTES  
4539' MD 4511' TVD

4500' MD-4600' MD: SLTYSH: 60%  
LTGY - MEDGY, PRED SUBBLKY TO  
SUBSPLT, SLTY TO F TXT, FREE  
CALC, IMBD PYR, FREE SLTST, NO  
STN, NO FLOR, NO O FLOR, SLOW  
LZY CUT, DIMYLW RNG

4600' MD-4700' MD: SLTYSH: 60%  
LTGY - MEDGY, PRED SUBBLKY TO  
SUBSPLT, SLTY TO F TXT, FREE  
CALC, IMBD PYR, FREE SLTST, NO

CG 390u

TG, C1-C4

CG 236u

