



Kerr-McGee Oil & Gas Onshore LP

A subsidiary of Anadarko Petroleum Corporation

1099 18th Street
Denver, CO 80202
720-929-6000

June 15, 2015

Matt Lepore
Director, Colorado Oil and Gas Conservation Commission
Department of Natural Resources
The Chancery Building
1120 Lincoln Street, Suite 801
Denver, CO 80203

Re: **30 Day Certification Letter - 318A.e**
POWERS 28C-34HZ (Doc No. 400849743)
Township 2 North, Range 65 West Section 27:
NWNE
Unit Acreage: 400 acres
Unit Spacing: 02N-65W-Sec 27 E2W2, W2E2
02N-65W-Sec 34 NENW, NWNE
Weld County, Colorado

Dear Director Lepore:

Kerr McGee Oil and Gas Onshore LP ("KMG") hereby certifies that KMG owns one hundred percent (100%) of the leasehold interest in the mineral rights in the proposed spacing unit. KMG hereby respectfully requests approval of this boundary well.

If you have any questions or issues regarding this permit, please contact our office.

Sincerely,

Kerr-McGee Oil and Gas Onshore LP

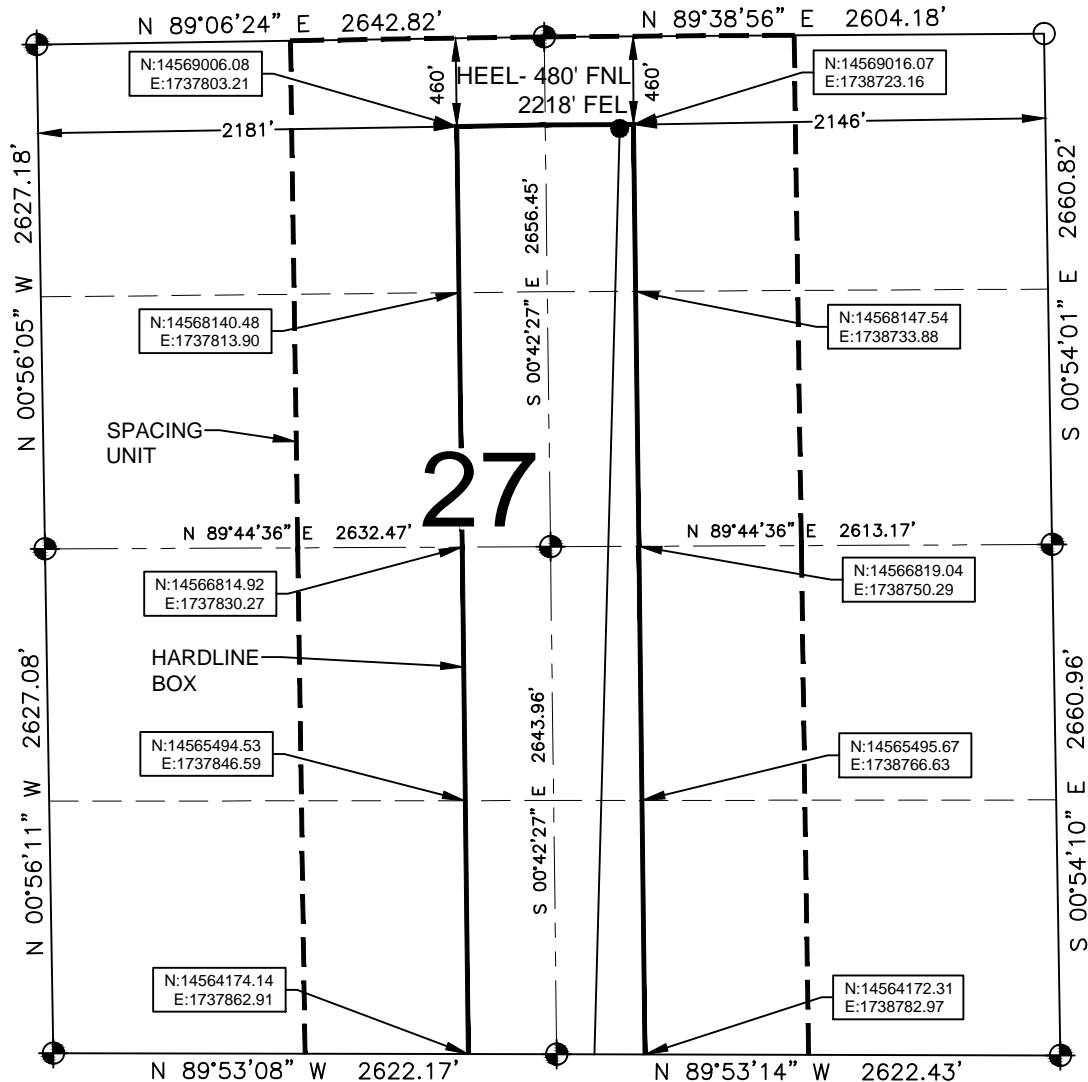
A handwritten signature in blue ink that reads "RPowers".

Ronett Powers
Regulatory Analyst II

Enclosure

HARDLINE EXHIBIT: POWERS 28C-34HZ

SECTION 27, TOWNSHIP 2 NORTH, RANGE 65 WEST, 6TH P.M.



LEGEND

- = EXISTING MONUMENT
- = PROPOSED HEEL
- = CALCULATED POSITION
- = BOTTOM HOLE
- BH = BOTTOM HOLE

HEEL LOCATION

WGS84 UTM 13N
LATITUDE= 40.115526°
LONGITUDE= 104.648634°

LATITUDE= 40°06'55.893"
LONGITUDE= 104°38'55.083"

BOTTOM HOLE LOCATION

NAD83 STATE PLANE CO N
LATITUDE= 40.101184°
LONGITUDE= 104.649216°

LATITUDE= 40°06'04.262"
LONGITUDE= 104°38'57.176"

QRT/QRT SECTIONS WITHIN PATH OF THE HARDLINE

NENW, SEC. 27 NWNE, SEC. 27
SENW, SEC. 27 SWNE, SEC. 27
NESW, SEC. 27 NWSE, SEC. 27
SESW, SEC. 27 SWSE, SEC. 27

AVAILABLE FOOTAGE

5697'

NOTES:

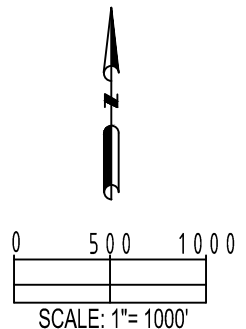
- THIS DOCUMENT IS NOT A LAND SURVEY PLAT OR IMPROVEMENT SURVEY PLAT. THIS DOCUMENT DOES NOT REFLECT A FIELD SURVEY. SECTION BREAKDOWN, MONUMENTATION AND HORIZONTAL POSITIONS SHOWN ARE BASED ON THE HEEL AND BOTTOM HOLE LOCATION PROVIDED BY ANADARKO PETROLEUM CORPORATION.
- COORDINATES ARE PROVIDED IN WGS84, UTM ZONE 13N.

PREPARED BY:



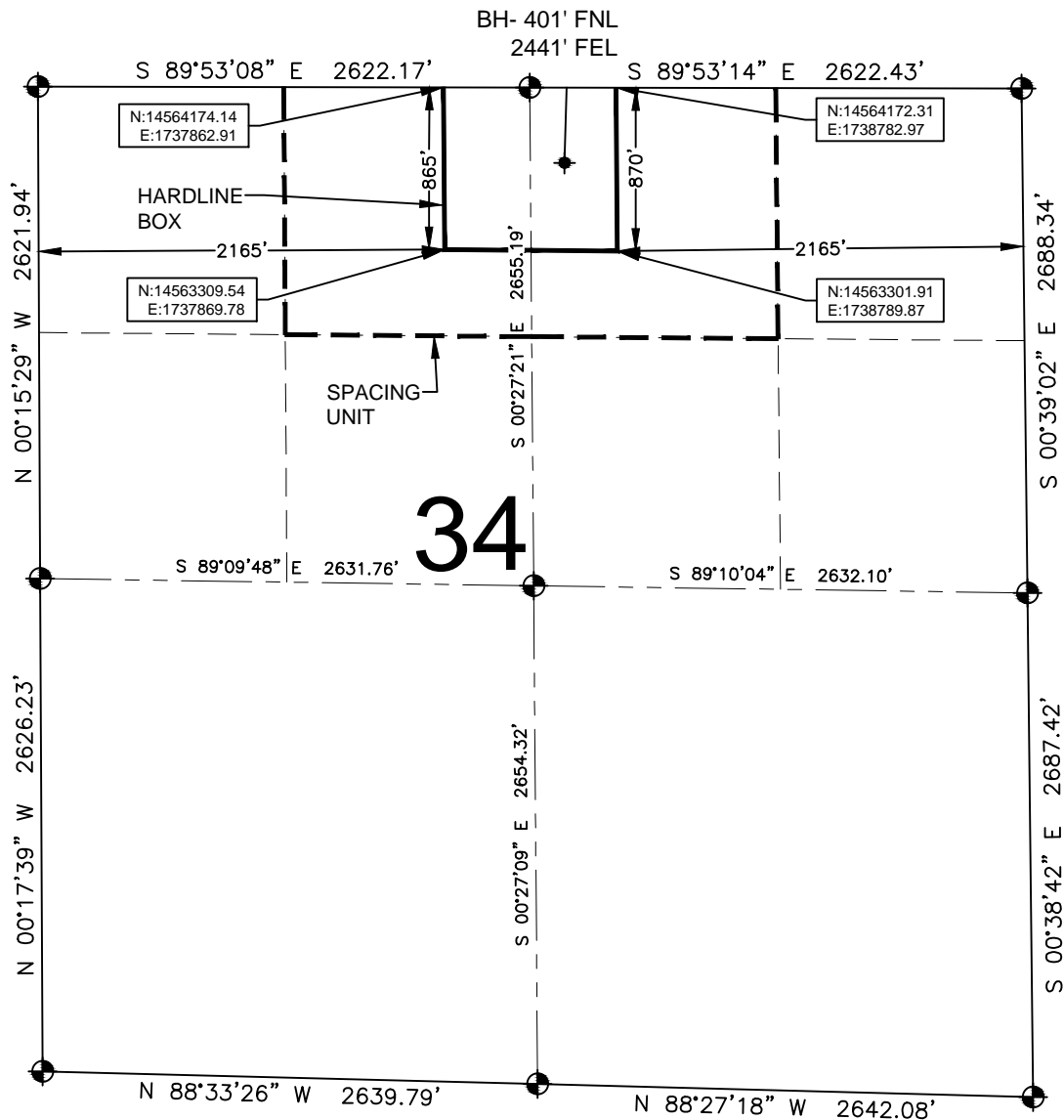
SHEET 1 OF 2

DRAWING DATE: 03-07-15
BY: SMF
CHECKED: TJN
HEEL LOCATION: NW 1/4 NE 1/4, SEC. 27, T2N, R65W, 6TH P.M. WELD COUNTY, COLORADO



HARDLINE EXHIBIT: POWERS 28C-34HZ

SECTION 34, TOWNSHIP 2 NORTH, RANGE 65 WEST, 6TH P.M.



LEGEND

- = EXISTING MONUMENT
- = PROPOSED HEEL
- = CALCULATED POSITION
- ✦ = BOTTOM HOLE
- BH = BOTTOM HOLE

QRT/QRT SECTIONS WITHIN PATH OF THE HARDLINE

NENW, SEC. 34
NWNE, SEC. 34

NOTES:

- THIS DOCUMENT IS NOT A LAND SURVEY PLAT OR IMPROVEMENT SURVEY PLAT. THIS DOCUMENT DOES NOT REFLECT A FIELD SURVEY. SECTION BREAKDOWN, MONUMENTATION AND HORIZONTAL POSITIONS SHOWN ARE BASED ON THE HEEL AND BOTTOM HOLE LOCATION PROVIDED BY ANADARKO PETROLEUM CORPORATION.
- COORDINATES ARE PROVIDED IN WGS84, UTM ZONE 13N.