
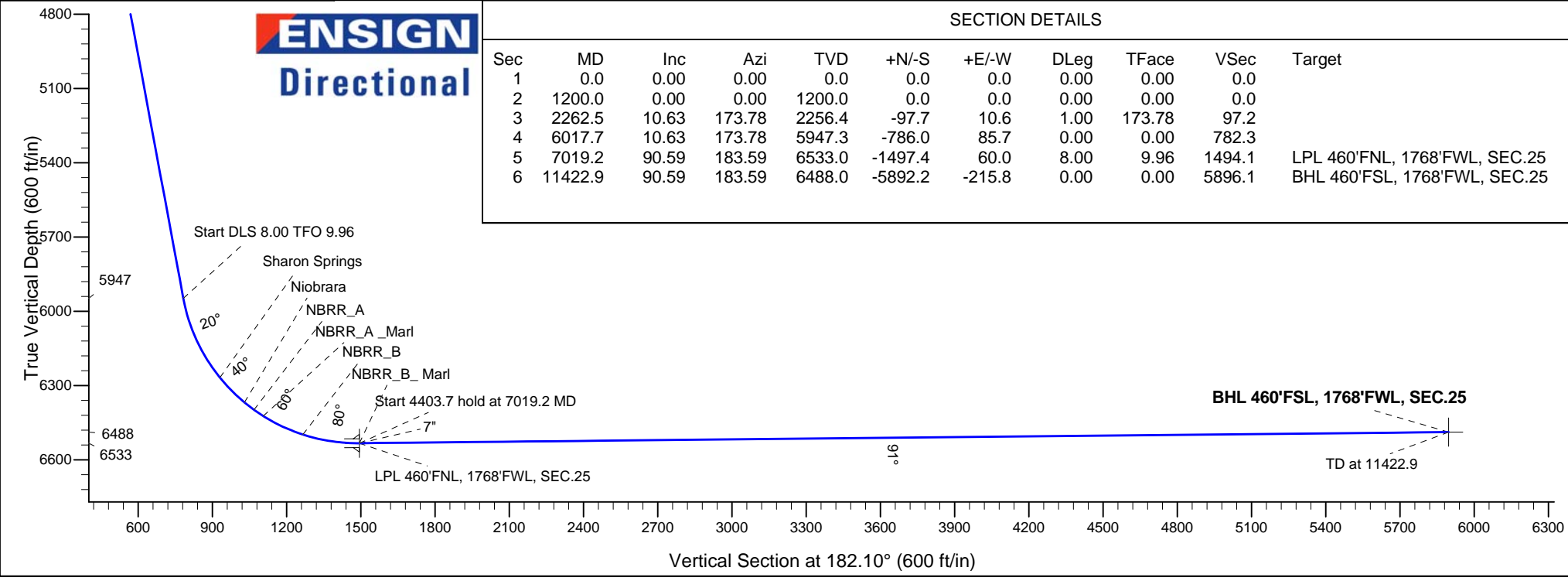
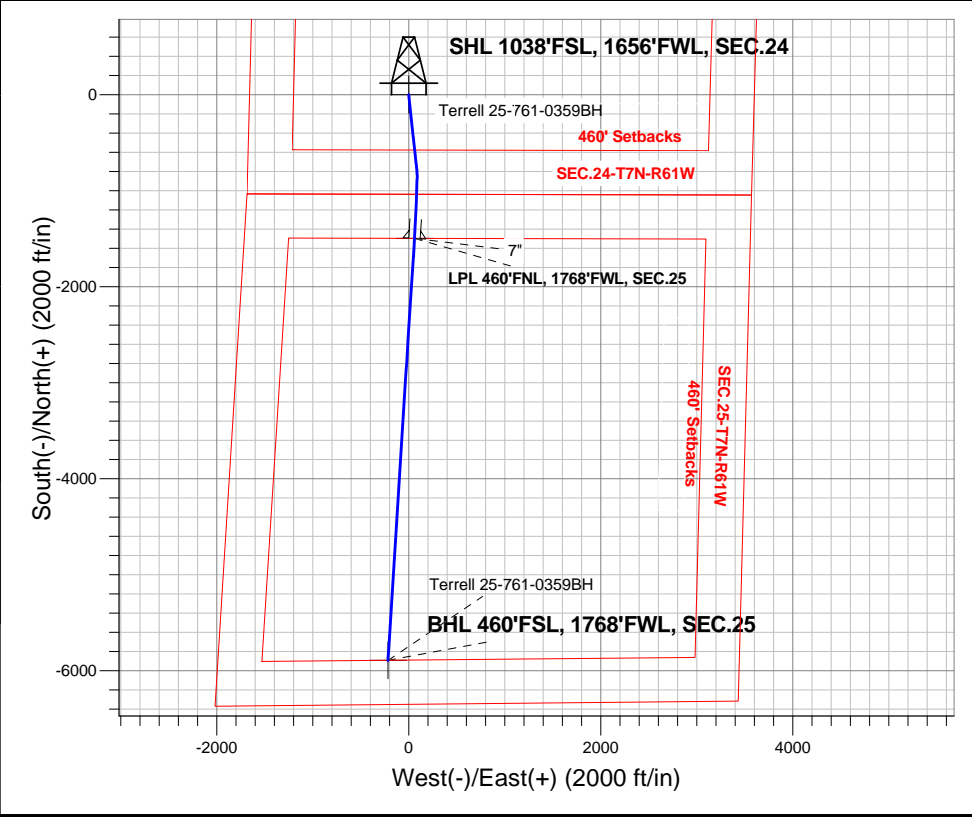
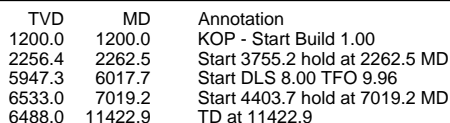


<p>Caerus Oil and Gas LLC</p>

Well Name: Terrell 25-761-0359BH					
Surface Location: Terrell N 24 761 Pad Sec.24-T7N-R61W					
North American Datum 1983 , US State Plane 1983 , Colorado Northern Zone					
Ground Elevation: 5018.0					
+N-S	+E-W	Northing	Easting	Latitude	Longitude
0.0	0.0	1448284.28	3372392.79	40.556215	-104.159773
RKB - 30' WELL @ 5048.0ft (RKB - 30')					

WELLBORE TARGET DETAILS				
Name	TVD	+N/-S	+E/-W	Shape
SHL 1038'FSL, 1656'FWL, SEC.24	1.0	0.0	0.0	Point
BHL 460'FSL, 1768'FWL, SEC.25	6488.0	-5892.2	-216.0	Point
LPL 460'FNL, 1768'FWL, SEC.25	6533.0	-1497.4	60.0	Point

 <p>Azimuths to True North Magnetic North: 8.00°</p> <p>Magnetic Field Strength: 52844.1snT Dip Angle: 67.13° Date: 7/8/2015 Model: IGRF2010</p>	Terrell N 24 761 Pad Sec.24-T7N-R61W Terrell 25-761-0359BH Plan #1 (7-07-15) 10:11, July 08 2015		
	ANNOTATIONS		
	TVD	MD	Annotation
1200.0	1200.0	KOP - Start Build 1.00	
2256.4	2262.5	Start 3755.2 hold at 2262.5 MD	
5947.3	6017.7	Start DLS 8.00 TFO 9.96	
6533.0	7019.2	Start 4403.7 hold at 7019.2 MD	
6488.0	11422.9	TD at 11422.9	





Caerus Oil and Gas LLC

SEC.24-T7N-R61W

Terrell N 24 761 Pad Sec.24-T7N-R61W

Terrell 25-761-0359BH

Wellbore #1

Plan: Plan #1 (7-07-15)

Standard Planning Report

08 July, 2015

Plan Sections										
Measured Depth (ft)	Inclination (°)	Azimuth (°)	Vertical Depth (ft)	+N/-S (ft)	+E/-W (ft)	Dogleg Rate (°/100ft)	Build Rate (°/100ft)	Turn Rate (°/100ft)	TFO (°)	Target
0.0	0.00	0.00	0.0	0.0	0.0	0.00	0.00	0.00	0.00	
1,200.0	0.00	0.00	1,200.0	0.0	0.0	0.00	0.00	0.00	0.00	
2,262.5	10.63	173.78	2,256.4	-97.7	10.6	1.00	1.00	0.00	173.78	
6,017.7	10.63	173.78	5,947.3	-786.0	85.7	0.00	0.00	0.00	0.00	
7,019.2	90.59	183.59	6,533.0	-1,497.4	60.0	8.00	7.98	0.98	9.96	LPL 460°FNL, 1768
11,422.9	90.59	183.59	6,488.0	-5,892.2	-215.8	0.00	0.00	0.00	0.00	BHL 460°FSL, 1768

Database:	EDMNEW	Local Co-ordinate Reference:	Well Terrell 25-761-0359BH
Company:	Caerus Oil and Gas LLC	TVD Reference:	WELL @ 5048.0ft (RKB - 30')
Project:	SEC.24-T7N-R61W	MD Reference:	WELL @ 5048.0ft (RKB - 30')
Site:	Terrell N 24 761 Pad Sec.24-T7N-R61W	North Reference:	True
Well:	Terrell 25-761-0359BH	Survey Calculation Method:	Minimum Curvature
Wellbore:	Wellbore #1		
Design:	Plan #1 (7-07-15)		

Planned Survey									
Measured Depth (ft)	Inclination (°)	Azimuth (°)	Vertical Depth (ft)	+N/-S (ft)	+E/-W (ft)	Vertical Section (ft)	Dogleg Rate (°/100ft)	Build Rate (°/100ft)	Turn Rate (°/100ft)
0.0	0.00	0.00	0.0	0.0	0.0	0.0	0.00	0.00	0.00
1.0	0.00	0.00	1.0	0.0	0.0	0.0	0.00	0.00	0.00
SHL 1038'FSL, 1656'FWL, SEC.24									
100.0	0.00	0.00	100.0	0.0	0.0	0.0	0.00	0.00	0.00
200.0	0.00	0.00	200.0	0.0	0.0	0.0	0.00	0.00	0.00
300.0	0.00	0.00	300.0	0.0	0.0	0.0	0.00	0.00	0.00
400.0	0.00	0.00	400.0	0.0	0.0	0.0	0.00	0.00	0.00
500.0	0.00	0.00	500.0	0.0	0.0	0.0	0.00	0.00	0.00
600.0	0.00	0.00	600.0	0.0	0.0	0.0	0.00	0.00	0.00
700.0	0.00	0.00	700.0	0.0	0.0	0.0	0.00	0.00	0.00
800.0	0.00	0.00	800.0	0.0	0.0	0.0	0.00	0.00	0.00
900.0	0.00	0.00	900.0	0.0	0.0	0.0	0.00	0.00	0.00
1,000.0	0.00	0.00	1,000.0	0.0	0.0	0.0	0.00	0.00	0.00
1,100.0	0.00	0.00	1,100.0	0.0	0.0	0.0	0.00	0.00	0.00
1,200.0	0.00	0.00	1,200.0	0.0	0.0	0.0	0.00	0.00	0.00
KOP - Start Build 1.00									
1,300.0	1.00	173.78	1,300.0	-0.9	0.1	0.9	1.00	1.00	0.00
1,400.0	2.00	173.78	1,400.0	-3.5	0.4	3.5	1.00	1.00	0.00
1,500.0	3.00	173.78	1,499.9	-7.8	0.9	7.8	1.00	1.00	0.00
1,600.0	4.00	173.78	1,599.7	-13.9	1.5	13.8	1.00	1.00	0.00
1,700.0	5.00	173.78	1,699.4	-21.7	2.4	21.6	1.00	1.00	0.00
1,800.0	6.00	173.78	1,798.9	-31.2	3.4	31.1	1.00	1.00	0.00
1,900.0	7.00	173.78	1,898.3	-42.5	4.6	42.3	1.00	1.00	0.00
2,000.0	8.00	173.78	1,997.4	-55.4	6.0	55.2	1.00	1.00	0.00
2,100.0	9.00	173.78	2,096.3	-70.1	7.6	69.8	1.00	1.00	0.00
2,200.0	10.00	173.78	2,194.9	-86.5	9.4	86.1	1.00	1.00	0.00
2,262.5	10.63	173.78	2,256.4	-97.7	10.6	97.2	1.00	1.00	0.00
Start 3755.2 hold at 2262.5 MD									
2,300.0	10.63	173.78	2,293.3	-104.5	11.4	104.0	0.00	0.00	0.00
2,400.0	10.63	173.78	2,391.6	-122.9	13.4	122.3	0.00	0.00	0.00
2,500.0	10.63	173.78	2,489.8	-141.2	15.4	140.5	0.00	0.00	0.00
2,600.0	10.63	173.78	2,588.1	-159.5	17.4	158.8	0.00	0.00	0.00
2,700.0	10.63	173.78	2,686.4	-177.8	19.4	177.0	0.00	0.00	0.00
2,800.0	10.63	173.78	2,784.7	-196.2	21.4	195.3	0.00	0.00	0.00
2,900.0	10.63	173.78	2,883.0	-214.5	23.4	213.5	0.00	0.00	0.00
3,000.0	10.63	173.78	2,981.3	-232.8	25.4	231.7	0.00	0.00	0.00
3,100.0	10.63	173.78	3,079.6	-251.2	27.4	250.0	0.00	0.00	0.00
3,200.0	10.63	173.78	3,177.8	-269.5	29.4	268.2	0.00	0.00	0.00
3,300.0	10.63	173.78	3,276.1	-287.8	31.4	286.5	0.00	0.00	0.00
3,400.0	10.63	173.78	3,374.4	-306.2	33.4	304.7	0.00	0.00	0.00
3,485.0	10.63	173.78	3,458.0	-321.7	35.1	320.2	0.00	0.00	0.00
Richard_SD									
3,500.0	10.63	173.78	3,472.7	-324.5	35.4	323.0	0.00	0.00	0.00
3,600.0	10.63	173.78	3,571.0	-342.8	37.4	341.2	0.00	0.00	0.00
3,700.0	10.63	173.78	3,669.3	-361.1	39.4	359.5	0.00	0.00	0.00
3,800.0	10.63	173.78	3,767.6	-379.5	41.4	377.7	0.00	0.00	0.00
3,900.0	10.63	173.78	3,865.8	-397.8	43.4	395.9	0.00	0.00	0.00
4,000.0	10.63	173.78	3,964.1	-416.1	45.4	414.2	0.00	0.00	0.00
4,100.0	10.63	173.78	4,062.4	-434.5	47.4	432.4	0.00	0.00	0.00
4,200.0	10.63	173.78	4,160.7	-452.8	49.4	450.7	0.00	0.00	0.00
4,300.0	10.63	173.78	4,259.0	-471.1	51.4	468.9	0.00	0.00	0.00
4,400.0	10.63	173.78	4,357.3	-489.4	53.4	487.2	0.00	0.00	0.00
4,497.4	10.63	173.78	4,453.0	-507.3	55.3	504.9	0.00	0.00	0.00
Sussex									

Database:	EDMNEW	Local Co-ordinate Reference:	Well Terrell 25-761-0359BH
Company:	Caerus Oil and Gas LLC	TVD Reference:	WELL @ 5048.0ft (RKB - 30')
Project:	SEC.24-T7N-R61W	MD Reference:	WELL @ 5048.0ft (RKB - 30')
Site:	Terrell N 24 761 Pad Sec.24-T7N-R61W	North Reference:	True
Well:	Terrell 25-761-0359BH	Survey Calculation Method:	Minimum Curvature
Wellbore:	Wellbore #1		
Design:	Plan #1 (7-07-15)		

Planned Survey									
Measured Depth (ft)	Inclination (°)	Azimuth (°)	Vertical Depth (ft)	+N/-S (ft)	+E/-W (ft)	Vertical Section (ft)	Dogleg Rate (°/100ft)	Build Rate (°/100ft)	Turn Rate (°/100ft)
4,500.0	10.63	173.78	4,455.6	-507.8	55.4	505.4	0.00	0.00	0.00
4,600.0	10.63	173.78	4,553.8	-526.1	57.4	523.7	0.00	0.00	0.00
4,700.0	10.63	173.78	4,652.1	-544.4	59.4	541.9	0.00	0.00	0.00
4,800.0	10.63	173.78	4,750.4	-562.8	61.4	560.1	0.00	0.00	0.00
4,900.0	10.63	173.78	4,848.7	-581.1	63.4	578.4	0.00	0.00	0.00
5,000.0	10.63	173.78	4,947.0	-599.4	65.4	596.6	0.00	0.00	0.00
5,100.0	10.63	173.78	5,045.3	-617.8	67.4	614.9	0.00	0.00	0.00
5,200.0	10.63	173.78	5,143.6	-636.1	69.4	633.1	0.00	0.00	0.00
5,300.0	10.63	173.78	5,241.8	-654.4	71.4	651.4	0.00	0.00	0.00
5,400.0	10.63	173.78	5,340.1	-672.7	73.4	669.6	0.00	0.00	0.00
5,500.0	10.63	173.78	5,438.4	-691.1	75.4	687.8	0.00	0.00	0.00
5,600.0	10.63	173.78	5,536.7	-709.4	77.4	706.1	0.00	0.00	0.00
5,700.0	10.63	173.78	5,635.0	-727.7	79.4	724.3	0.00	0.00	0.00
5,800.0	10.63	173.78	5,733.3	-746.1	81.4	742.6	0.00	0.00	0.00
5,900.0	10.63	173.78	5,831.6	-764.4	83.4	760.8	0.00	0.00	0.00
6,000.0	10.63	173.78	5,929.8	-782.7	85.4	779.1	0.00	0.00	0.00
6,017.7	10.63	173.78	5,947.3	-786.0	85.7	782.3	0.00	0.00	0.00
Start DLS 8.00 TFO 9.96									
6,100.0	17.14	177.63	6,027.1	-805.6	87.0	801.9	8.00	7.92	4.69
6,200.0	25.11	179.67	6,120.3	-841.7	87.8	837.9	8.00	7.97	2.03
6,300.0	33.09	180.77	6,207.6	-890.2	87.5	886.4	8.00	7.98	1.10
6,374.8	39.07	181.32	6,268.0	-934.3	86.7	930.5	8.00	7.99	0.74
Sharon Springs									
6,400.0	41.08	181.47	6,287.3	-950.5	86.3	946.7	8.00	7.99	0.62
6,500.0	49.08	181.99	6,357.9	-1,021.2	84.2	1,017.4	8.00	7.99	0.51
6,515.7	50.33	182.06	6,368.0	-1,033.2	83.7	1,029.4	8.00	7.99	0.44
Niobrara									
6,564.7	54.25	182.26	6,398.0	-1,071.9	82.3	1,068.2	8.00	7.99	0.41
NBRR_A									
6,600.0	57.07	182.39	6,417.9	-1,101.0	81.1	1,097.3	8.00	7.99	0.37
6,609.5	57.83	182.42	6,423.0	-1,109.0	80.8	1,105.3	8.00	7.99	0.36
NBRR_A_Marl									
6,700.0	65.06	182.72	6,466.2	-1,188.4	77.2	1,184.8	8.00	7.99	0.33
6,786.9	72.01	182.98	6,498.0	-1,269.1	73.2	1,265.5	8.00	8.00	0.30
NBRR_B									
6,800.0	73.06	183.02	6,501.9	-1,281.6	72.5	1,278.1	8.00	8.00	0.28
6,900.0	81.05	183.29	6,524.3	-1,378.8	67.1	1,375.4	8.00	8.00	0.27
7,000.0	89.05	183.54	6,532.9	-1,478.2	61.2	1,475.0	8.00	8.00	0.26
7,019.2	90.59	183.59	6,533.0	-1,497.4	60.0	1,494.1	8.00	8.00	0.26
Start 4403.7 hold at 7019.2 MD - NBRR_B_Marl - 7" - LPL 460'FNL, 1768'FWL, SEC.25									
7,100.0	90.59	183.59	6,532.2	-1,578.0	55.0	1,574.9	0.00	0.00	0.00
7,200.0	90.59	183.59	6,531.2	-1,677.8	48.7	1,674.9	0.00	0.00	0.00
7,300.0	90.59	183.59	6,530.1	-1,777.6	42.4	1,774.8	0.00	0.00	0.00
7,400.0	90.59	183.59	6,529.1	-1,877.4	36.2	1,874.8	0.00	0.00	0.00
7,500.0	90.59	183.59	6,528.1	-1,977.2	29.9	1,974.8	0.00	0.00	0.00
7,600.0	90.59	183.59	6,527.1	-2,077.0	23.6	2,074.7	0.00	0.00	0.00
7,700.0	90.59	183.59	6,526.0	-2,176.8	17.4	2,174.7	0.00	0.00	0.00
7,800.0	90.59	183.59	6,525.0	-2,276.6	11.1	2,274.6	0.00	0.00	0.00
7,900.0	90.59	183.59	6,524.0	-2,376.4	4.8	2,374.6	0.00	0.00	0.00
8,000.0	90.59	183.59	6,523.0	-2,476.2	-1.4	2,474.6	0.00	0.00	0.00
8,100.0	90.59	183.59	6,522.0	-2,576.0	-7.7	2,574.5	0.00	0.00	0.00
8,200.0	90.59	183.59	6,520.9	-2,675.8	-13.9	2,674.5	0.00	0.00	0.00
8,300.0	90.59	183.59	6,519.9	-2,775.6	-20.2	2,774.4	0.00	0.00	0.00

Planned Survey										
Measured Depth (ft)	Inclination (°)	Azimuth (°)	Vertical Depth (ft)	+N/-S (ft)	+E/-W (ft)	Vertical Section (ft)	Dogleg Rate (°/100ft)	Build Rate (°/100ft)	Turn Rate (°/100ft)	
8,400.0	90.59	183.59	6,518.9	-2,875.4	-26.5	2,874.4	0.00	0.00	0.00	
8,500.0	90.59	183.59	6,517.9	-2,975.2	-32.7	2,974.4	0.00	0.00	0.00	
8,600.0	90.59	183.59	6,516.8	-3,075.0	-39.0	3,074.3	0.00	0.00	0.00	
8,700.0	90.59	183.59	6,515.8	-3,174.8	-45.3	3,174.3	0.00	0.00	0.00	
8,800.0	90.59	183.59	6,514.8	-3,274.6	-51.5	3,274.3	0.00	0.00	0.00	
8,900.0	90.59	183.59	6,513.8	-3,374.4	-57.8	3,374.2	0.00	0.00	0.00	
9,000.0	90.59	183.59	6,512.8	-3,474.2	-64.1	3,474.2	0.00	0.00	0.00	
9,100.0	90.59	183.59	6,511.7	-3,574.0	-70.3	3,574.1	0.00	0.00	0.00	
9,200.0	90.59	183.59	6,510.7	-3,673.8	-76.6	3,674.1	0.00	0.00	0.00	
9,300.0	90.59	183.59	6,509.7	-3,773.6	-82.9	3,774.1	0.00	0.00	0.00	
9,400.0	90.59	183.59	6,508.7	-3,873.4	-89.1	3,874.0	0.00	0.00	0.00	
9,500.0	90.59	183.59	6,507.6	-3,973.1	-95.4	3,974.0	0.00	0.00	0.00	
9,600.0	90.59	183.59	6,506.6	-4,072.9	-101.7	4,073.9	0.00	0.00	0.00	
9,700.0	90.59	183.59	6,505.6	-4,172.7	-107.9	4,173.9	0.00	0.00	0.00	
9,800.0	90.59	183.59	6,504.6	-4,272.5	-114.2	4,273.9	0.00	0.00	0.00	
9,900.0	90.59	183.59	6,503.6	-4,372.3	-120.4	4,373.8	0.00	0.00	0.00	
10,000.0	90.59	183.59	6,502.5	-4,472.1	-126.7	4,473.8	0.00	0.00	0.00	
10,100.0	90.59	183.59	6,501.5	-4,571.9	-133.0	4,573.7	0.00	0.00	0.00	
10,200.0	90.59	183.59	6,500.5	-4,671.7	-139.2	4,673.7	0.00	0.00	0.00	
10,300.0	90.59	183.59	6,499.5	-4,771.5	-145.5	4,773.7	0.00	0.00	0.00	
10,400.0	90.59	183.59	6,498.5	-4,871.3	-151.8	4,873.6	0.00	0.00	0.00	
10,500.0	90.59	183.59	6,497.4	-4,971.1	-158.0	4,973.6	0.00	0.00	0.00	
10,600.0	90.59	183.59	6,496.4	-5,070.9	-164.3	5,073.5	0.00	0.00	0.00	
10,700.0	90.59	183.59	6,495.4	-5,170.7	-170.6	5,173.5	0.00	0.00	0.00	
10,800.0	90.59	183.59	6,494.4	-5,270.5	-176.8	5,273.5	0.00	0.00	0.00	
10,900.0	90.59	183.59	6,493.3	-5,370.3	-183.1	5,373.4	0.00	0.00	0.00	
11,000.0	90.59	183.59	6,492.3	-5,470.1	-189.4	5,473.4	0.00	0.00	0.00	
11,100.0	90.59	183.59	6,491.3	-5,569.9	-195.6	5,573.4	0.00	0.00	0.00	
11,200.0	90.59	183.59	6,490.3	-5,669.7	-201.9	5,673.3	0.00	0.00	0.00	
11,300.0	90.59	183.59	6,489.3	-5,769.5	-208.1	5,773.3	0.00	0.00	0.00	
11,400.0	90.59	183.59	6,488.2	-5,869.3	-214.4	5,873.2	0.00	0.00	0.00	
11,422.9	90.59	183.59	6,488.0	-5,892.2	-215.8	5,896.1	0.00	0.00	0.00	
TD at 11422.9 - BHL 460'FSL, 1768'FWL, SEC.25										

COMPASS 2003.21 Build 46

Database:	EDMNEW	Local Co-ordinate Reference:	Well Terrell 25-761-0359BH
Company:	Caerus Oil and Gas LLC	TVD Reference:	WELL @ 5048.0ft (RKB - 30')
Project:	SEC.24-T7N-R61W	MD Reference:	WELL @ 5048.0ft (RKB - 30')
Site:	Terrell N 24 761 Pad Sec.24-T7N-R61W	North Reference:	True
Well:	Terrell 25-761-0359BH	Survey Calculation Method:	Minimum Curvature
Wellbore:	Wellbore #1		
Design:	Plan #1 (7-07-15)		

Casing Points					
Measured Depth (ft)	Vertical Depth (ft)	Name	Casing Diameter (")	Hole Diameter (")	
7,019.2	6,533.0	7"	7	7-1/2	

Formations						
Measured Depth (ft)	Vertical Depth (ft)	Name	Lithology	Dip (°)	Dip Direction (°)	
3,485.0	3,458.0	Richard_SD				
4,497.4	4,453.0	Sussex				
6,374.8	6,268.0	Sharon Springs		0.00		
6,515.7	6,368.0	Niobrara		0.00		
6,564.7	6,398.0	NBRR_A		0.00		
6,609.5	6,423.0	NBRR_A_Marl		0.00		
6,786.9	6,498.0	NBRR_B		0.00		
7,019.2	6,533.0	NBRR_B_Marl		0.00		

Plan Annotations					
Measured Depth (ft)	Vertical Depth (ft)	Local Coordinates			
		+N/-S (ft)	+E/-W (ft)	Comment	
1,200.0	1,200.0	0.0	0.0	KOP - Start Build 1.00	
2,262.5	2,256.4	-97.7	10.6	Start 3755.2 hold at 2262.5 MD	
6,017.7	5,947.3	-786.0	85.7	Start DLS 8.00 TFO 9.96	
7,019.2	6,533.0	-1,497.4	60.0	Start 4403.7 hold at 7019.2 MD	
11,422.9	6,488.0	-5,892.2	-215.8	TD at 11422.9	