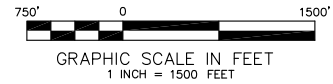
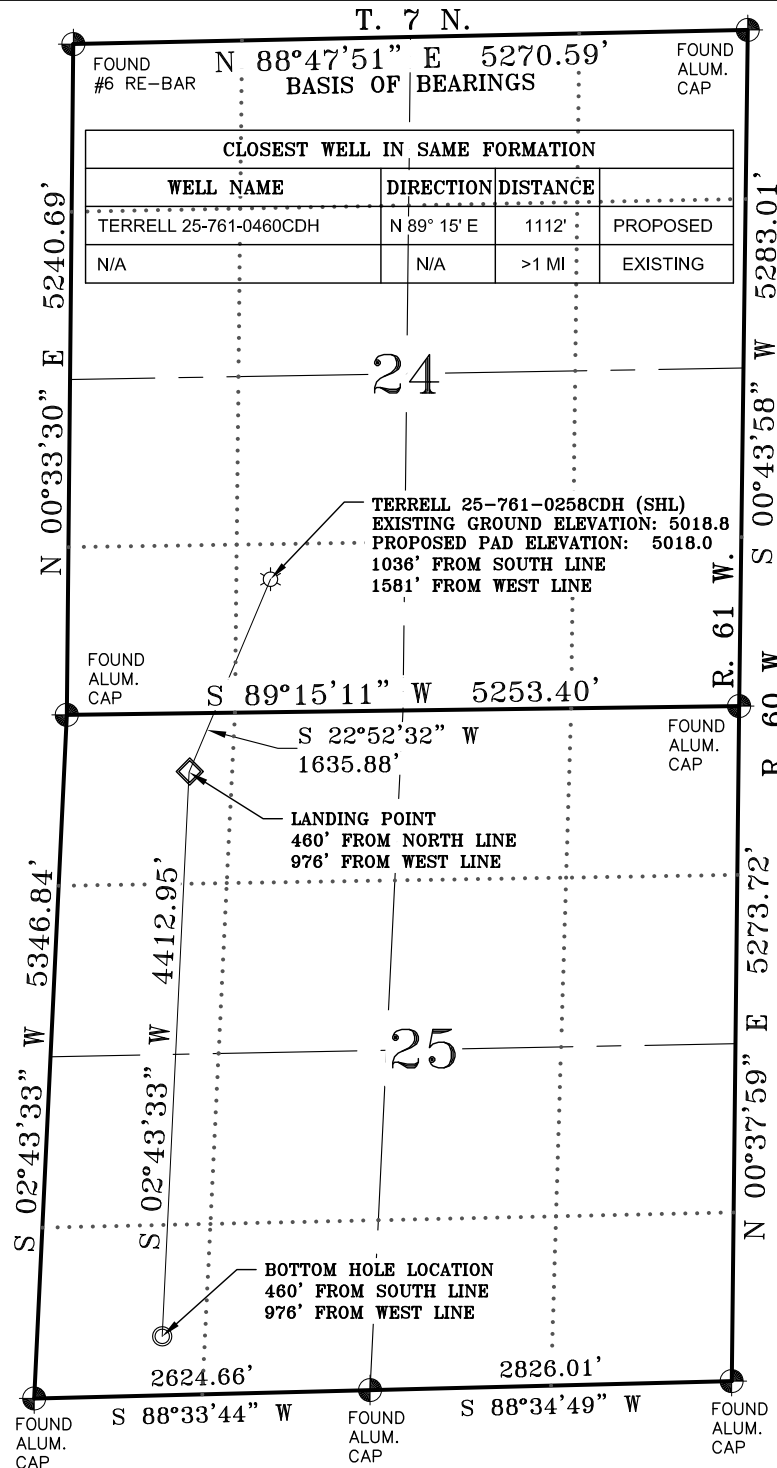


TERRELL 25-761-0258CDH LOCATION PLAT



LEGEND:

FIELD LOCATED SECTION MONUMENTS AS DESCRIBED

SURFACE HOLE LOCATION (SHL)

LANDING POINT (LPL)

BOTTOM HOLE LOCATION (BHL)

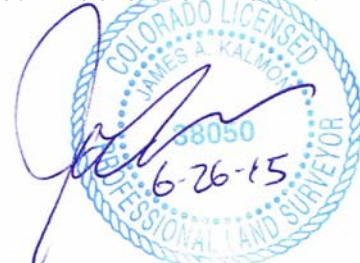


NOTES:

- 1) DATE OF MEASUREMENT: 1/16/15
- 2) ELEVATIONS ARE BASED ON NGS STATION "PARACHINI" WITH A PUBLISHED ELEVATION OF 1434.1 METERS.
- 3) LATITUDES AND LONGITUDES ARE BASED ON NAD 83 COLORADO NORTH ZONE.
- 4) WELL MEASURED 90° FROM SECTION LINES.
- 5) THE BASIS OF BEARING IS FROM GPS OBSERVATION RESULTING IN THE BEARING BETWEEN THE FOUND MONUMENTS AS SHOWN.
- 6) ELEVATION MASK SET TO 15°
- 7) PDOP: 1.6

SURVEYORS STATEMENT:

I, JAMES A. KALMON, A REGISTERED LAND SURVEYOR IN THE STATE OF COLORADO DO HEREBY CERTIFY THAT THE SURVEY SHOWN HEREON WAS PREPARED BY ME OR UNDER MY DIRECT SUPERVISION AND THAT THIS PLAT IS A TRUE REPRESENTATION THEREOF. I FURTHER CERTIFY THAT THIS LOCATION HAS BEEN STAKED ON THE GROUND AS SHOWN ON THIS PLAT.



JAMES A. KALMON, COLORADO REGISTRATION NO. 38050
FOR AND ON BEHALF OF ECLIPSE SURVEYING, INC

	WELL NAME	NORTHING	EASTING	LAT NAD 83	LONG NAD 83
SHL	TERRELL 25-761-0258CDH	1448285.1	3372317.9	N 40.556220	W 104.160042
LP	LANDING POINT	1446777.9	3371682.0	N 40.552110	W 104.162412
BHL	BOTTOM HOLE LOCATION	1442369.9	3371472.1	N 40.540020	W 104.163407



ECLIPSE
Surveying, Inc.
1874 Six Lazy K Rd., New Castle, CO 81647
(970) 876-5939

REV. DATE: _____
SCALE: 1" = 1500'
DATE: 06/26/15
SHEET: 1 OF 1
PROJECT: S24-761
DFT: JAK



600 17th Street, Suite 1600 North, Denver, CO 80202

TERRELL 25-761-0258CDH
LOCATION PLAT