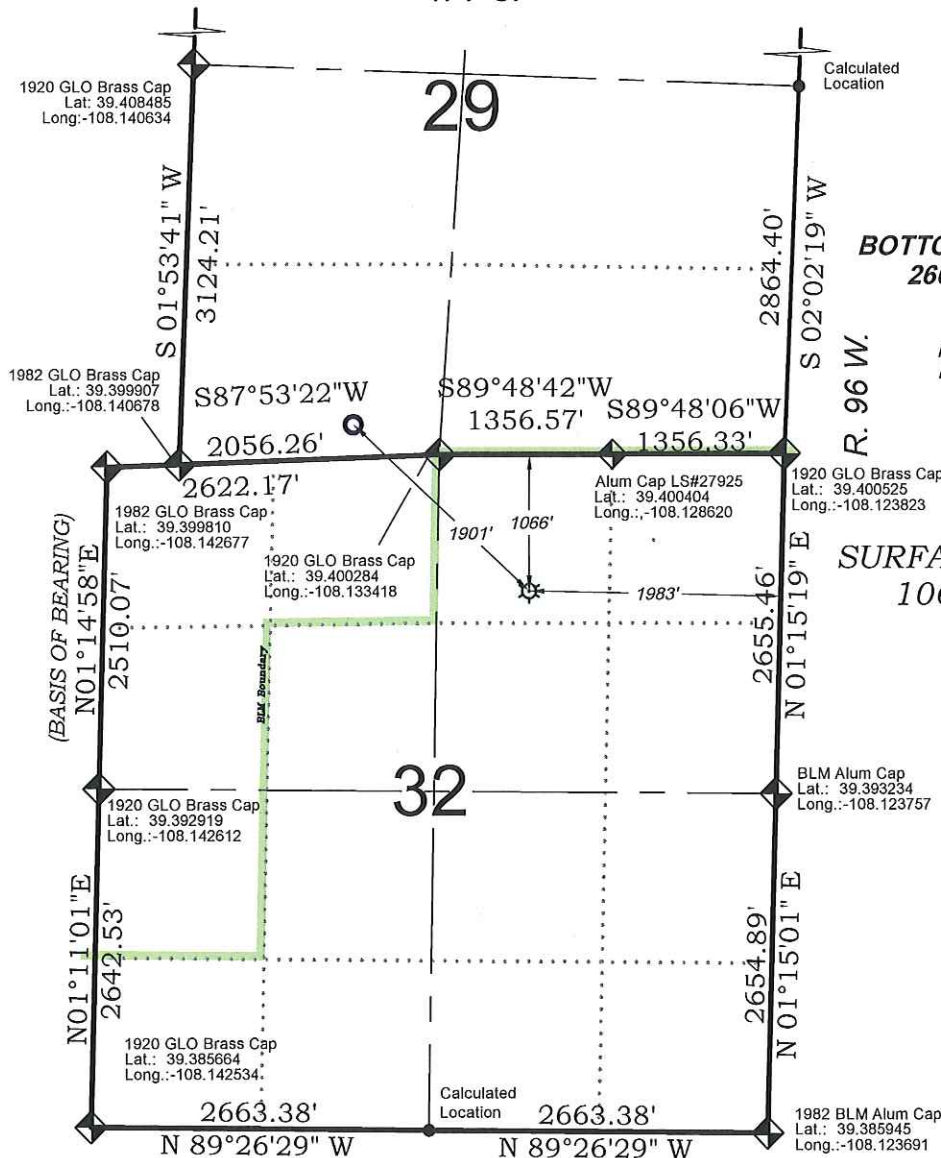


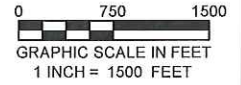
WPX SG 924-29D

T. 7 S.



**BOTTOM HOLE LOCATION**  
260 FSL, 1362 FWL

Lat.: 39.400876°  
Long.: -108.135854°  
N.: 1581704.2 (COSP)  
E.: 2255260.0 (COSP)



**SURFACE HOLE LOCATION**  
1066 FNL, 1983 FEL

Lat.: Lat.: 39.397421°  
Long.: -108.130811°  
N.: 1580405.1 (COSP)  
E.: 2256648.0 (COSP)

EXIST. GROUND ELEV.: 5325.7  
PROPOSED PAD ELEV.: 5325.7

SEE CONSTRUCTION LAYOUT PLAT  
FOR VISIBLE IMPROVEMENTS  
WITHIN 500' OF THIS LOCATION

**- LEGEND -**

FIELD LOCATED SECTION  
MONUMENTS AS DESCRIBED

FIELD SURVEYED  
WELL LOCATION

CALCULATED BOTTOM  
HOLE LOCATION

CALCULATED SECTION  
CORNER LOCATION

**SURVEYORS STATEMENT**

I, MICHAEL J. LANGHORNE, A REGISTERED LAND SURVEYOR IN THE STATE OF COLORADO DO HEREBY CERTIFY THAT THE SURVEY SHOWN HEREON WAS PREPARED UNDER MY DIRECT SUPERVISION AND HAS BEEN STAKED ON THE GROUND AS SHOWN ON THIS PLAT AND CHECKING THAT THIS MAP IS A TRUE REPRESENTATION THEREOF.

*Michael J. Langhorne*

MICHAEL J. LANGHORNE, COLORADO REGISTRATION NO. 36572  
FOR AND ON BEHALF OF  
BOOKCLIFF SURVEY SERVICES, INC.

**REFERENCES**

- 1) Dependent Resurvey & Subdivision of Certain Sections T. 7 S., R. 96 W., 6th P.M (GLO PLAT)
- 2) U.S.G.S. QUAD: PARACHUTE, CO

REVISED: 6/29/15

136 East Third Street  
Rifle, Colorado  
81650 Ph. (970)  
625-2720 Fax (970)  
625-2773

**BOOKCLIFF**  
Survey Services, Inc.

SURVEY DATE: 6/23/15  
MAP DATE: 6/24/15  
SCALE: 1" = 1500'  
PLAT: 1 of 1  
PROJECT: Valley

**NOTES**

- 1) ELEVATIONS BASED ON N.A.V.D. 1988 PUBLISHED COORDINATES.
- 2) LATITUDES AND LONGITUDES ARE BASE ON NAD 83, PUBLISHED COORDINATES
- 3) STATE PLANE COORDINATES ARE BASED ON COLORADO CENTRAL ZONE, U.S. SURVEY FEET.
- 4) ELEVATION MASK SET TO 15"
- 5) GPS OPERATOR J. KIRKPATRICK, OBSERVED A PDOP 2.4 ON SURVEY POINT NUMBER 7090.
- 6) SURFACE AND BOTTOM HOLE LOCATIONS ARE MEASURED 90° FROM SECTION LINES.

**WELL LOCATION PLAT Prepared for:**  
**WPXENERGY.**

WPX Energy Rocky Mountain, LLC

NW1/4 NE1/4, SECTION 32  
T. 7 S., R. 96 W. of the 6th. P.M.  
GARFIELD COUNTY, COLORADO