

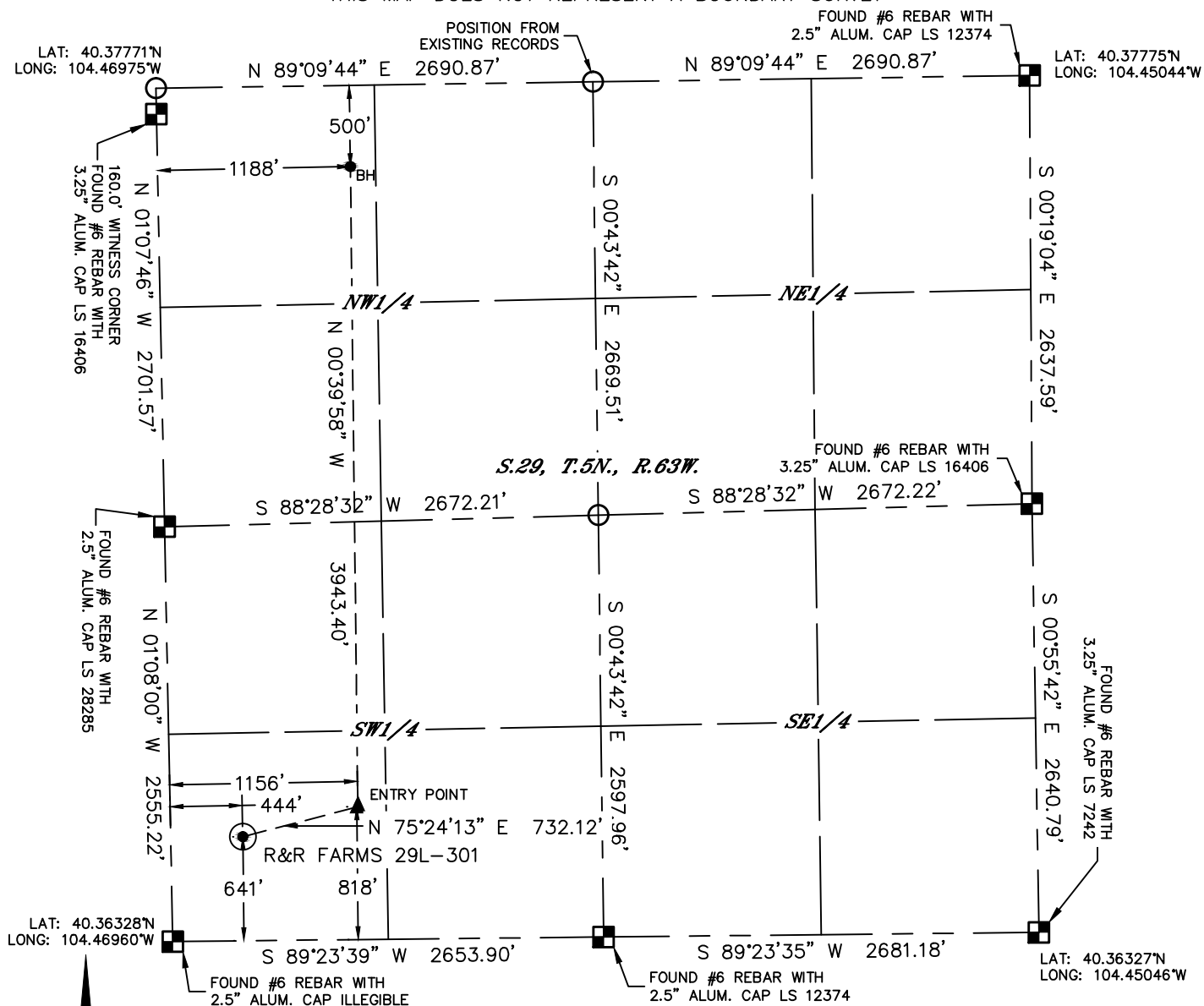
Lat40°, Inc. 6250 W. 10th Street, Unit 2, Greeley, CO 970-515-5294

WELL LOCATION CERTIFICATE

SECTION: 29
TOWNSHIP: 5N
RANGE: 63W

R&R FARMS 29L-301

THIS MAP DOES NOT REPRESENT A BOUNDARY SURVEY





In accordance with a request from Jeff Dillingham with PDC ENERGY, INC.

Lat40^o, Inc. has determined the surface location of the R&R FARMS 29L-30I to be 641' from the SOUTH line and 444' from the WEST line and the bottom hole to be 500' from the NORTH line and 1188' from the WEST line as measured at right angles from the section lines of Section 29, Township 5 North, Range 63 West of the Sixth Principal Meridian, County of Weld, State of Colorado.

I hereby state that this Well Location Certificate was prepared by me, or under my direct supervision, that the fieldwork was completed on 3/19/2015, for and on behalf of PDC ENERGY, INC.. That this is not a Land Survey Plat or an Improvement Survey Plat, and that it is not to be relied upon for establishment of fence, building, or other future improvement lines.

NOTE:

- 1) Bearings shown are Grid Bearings of the Colorado State Plane Coordinate System, North Zone, North American Datum 1983. The lineal dimensions as contained herein are based upon the "U.S. Survey Foot."
- 2) Ground elevations are based on an observed GPS elevation (NAVD 1988 DATUM).
- 3) IMPROVEMENTS: See LOCATION DRAWING for all visible improvements within 500' of oil and gas location.
- 4) SURFACE USE: CROP LAND
- 5) INSTRUMENT OPERATOR: BRIAN ROTTINGHAUS
- 6) NEAREST CULTURAL ITEMS:
- BUILDING: $\pm 340'$ SW
- BUILDING UNIT: $\pm 436'$ SW
- HIGH OCCUPANCY BUILDING UNIT: +5280'
- DESIGNATED OUTSIDE ACTIVITY AREA: +5280'
- PUBLIC ROAD: $\pm 432'$ W (CR 63)
- ABOVEGROUND UTILITY: $\pm 425'$ SW
- RAILROAD: +5280'
- PROPERTY LINE: $\pm 444'$ W
- LEGEND
-  = ALIQUOT MONUMENT AS DE
-  = CALCULATED POSITION

SURFACE LOCATION

LAT: 40.36504°N
LONG: 104.46802°W
PDOP: < 6
ELEV: ±4574'
1/4,1/4: SWSW



BOTTOM HOLE

LAT: 40.37635°N
LONG: 104.46547°W

ENTRY POINT

LAT: 40.36552°N
LONG: 104.46547°W

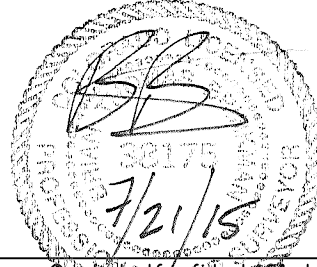
LEGEND

-  = ALIQUOT MONUMENT AS DESCRIBED
 = CALCULATED POSITION

Brian T. Brinkman—On behalf of Lat40, Inc.

Colorado Licensed Professional
Land Surveyor No. 38175

DATE: 7/21/2015
PROJECT#: 2014131



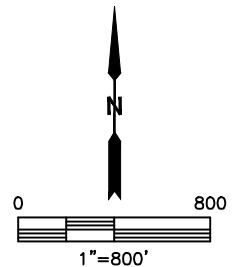
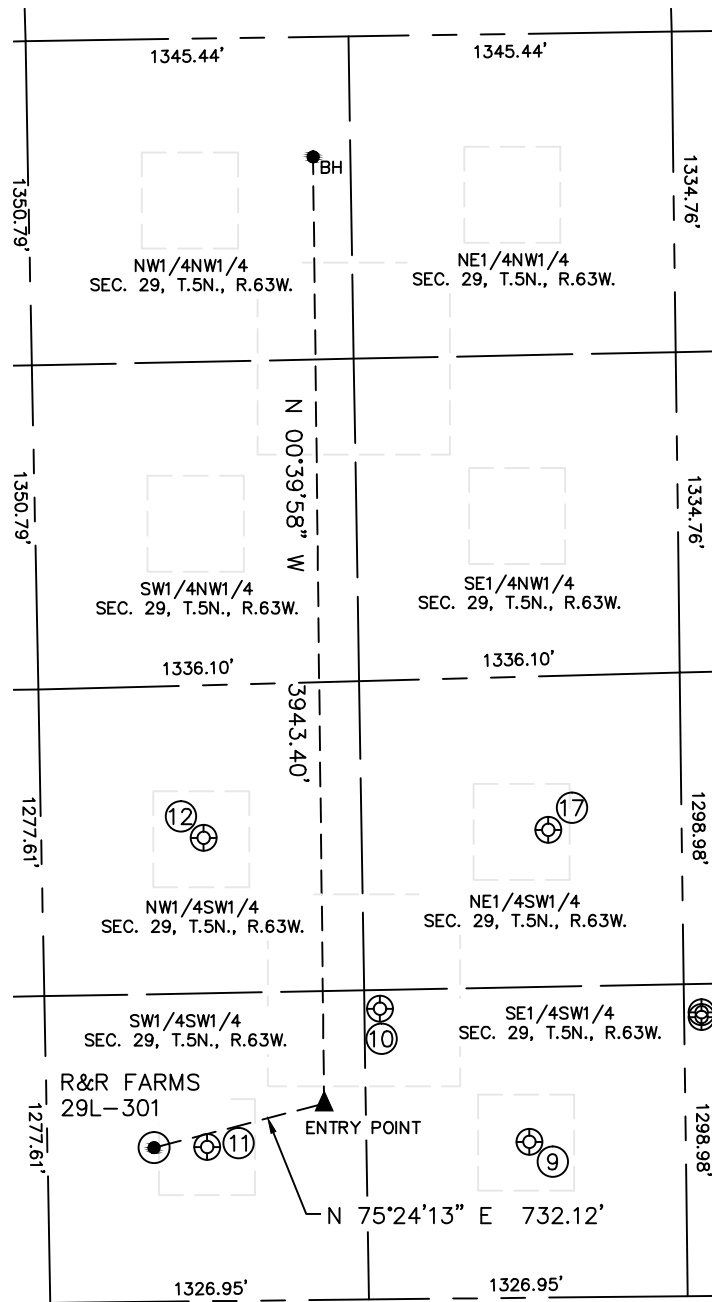


Lat40°, Inc. 6250 W. 10th Street, Unit 2, Greeley, CO 970-515-5294

SITE SKETCH

R&R FARMS 29L-301

SECTION: 29
TOWNSHIP: 5N
RANGE: 63W



| WELL NO. | WELL NAME | SHL FOOTAGE | | | | SHL LAT° | SHL LONG° | PDOP | ELEV (FT.) | 1/4/1/4 |
|----------|--------------|-------------|-----|------|-----|----------|------------|------|------------|---------|
| 9 | ROTHE 24-29U | 649 | FSL | 2007 | FWL | 40.36506 | -104.46241 | 2.2 | 4573 | SESW |
| 10 | ROTHE 29BU | 1210 | FSL | 1396 | FWL | 40.36660 | -104.46462 | 1.7 | 4565 | SESW |
| 11 | ROTHE 14-29U | 642 | FSL | 666 | FWL | 40.36504 | -104.46723 | 1.8 | 4572 | SWSW |
| 12 | ROTHE 13-29U | 1930 | FSL | 676 | FWL | 40.36858 | -104.46723 | 1.7 | 4568 | NWSW |
| 17 | ROTHE 23-29U | 1948 | FSL | 2112 | FWL | 40.36862 | -104.46207 | 1.7 | 4566 | NESW |

DATE: 7/21/2015
PROJECT#: 2014131