



June 16, 2015

VIA ELECTRONIC TRANSMITTAL

Director Matt Lepore
Colorado Oil and Gas Conservation Commission
1120 Lincoln Street Suite 801
Denver, Colorado 80203

RE: Rule 318.A.e.

MT Glenmere 1-8-7 (Niobrara)

MT Glenmere 2-8-7 (Niobrara)

Surface Location: NENW, Section 9, Township 5 North, Range 65 West
Weld County

Dear Mr. Lepore,

Extraction Oil and Gas is planning to drill the captioned horizontal wells in accordance with the provision of COGCC Rule 318A.e.

The proposed wellbore spacing unit consists of:

Sec. 8-5N-65W: S/2S/2

Sec. 7-5N-65W: S/2S/2

Sec. 17-5N-65W: N/2N/2

Sec. 18-5N-65W: N/2N/2

The spacing unit is a 640-acre wellbore spacing unit.

Extraction Oil and Gas hereby certifies to the Director that all Owners within the proposed spacing unit above were notified and 30 days have passed without objection.

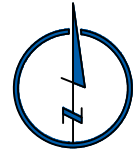
If you have any questions or issues regarding this permit, please contact Alyssa Andrews at 720-420-5749.

Respectfully,

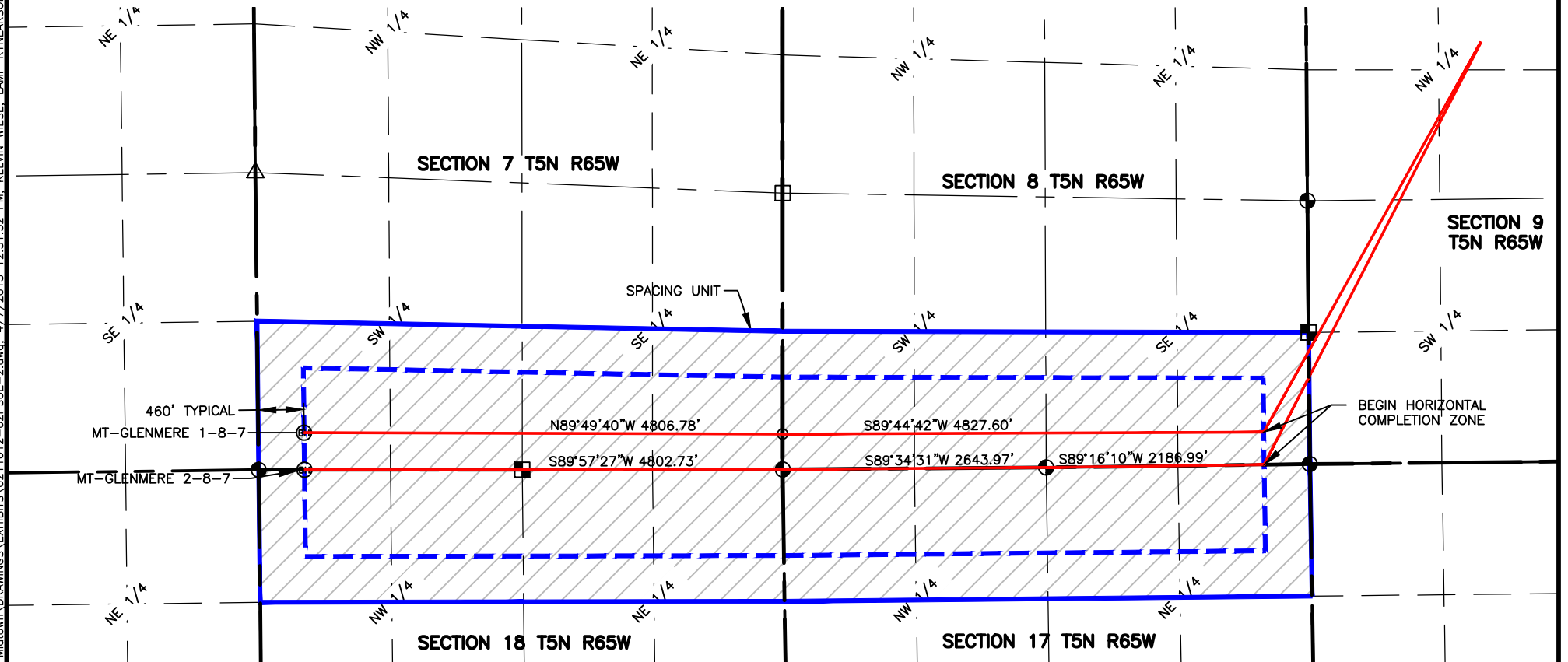
Alyssa Andrews
Agent for Extraction Oil and Gas

NAME: GLENMERE SPACING UNIT: S/2 SW/4, & S/2 SE/4, SEC 7, T5N, R65W; N/2 NW/4, & N/2 NE/4, SEC 18, T5N, R65W; S/2 SW/4, & S/2 SE/4, SEC 8 T5N, R65W; N/2 NW/4, & N/2 NE/4, SEC 17 T5N, R65W; UNIT ACREAGE: 640

WELL NAME	SURFACE LOCATION				BEGIN HORIZONTAL COMPLETION ZONE				END HORIZONTAL COMPLETION ZONE			
	DIST.	DIR.	DIST.	DIR.	DIST.	DIR.	DIST.	DIR.	DIST.	DIR.	DIST.	DIR.
MT-GLENMERE 1-8-7	1196'	FNL	1756'	FWL	328'	FSL	460'	FEL	460'	FWL	372'	FSL
MT-GLENMERE 2-8-7	1212'	FNL	1756'	FWL	0'	FNL	460'	FEL	460'	FWL	0'	FNL



0 1500
SCALE: 1"= 1500'
U.S. SURVEY FEET



LAMP RYNEARSON
& ASSOCIATES

4715 Innovation Drive 970.226.0342 | P
Fort Collins, CO 80525 970.226.0879 | F
www.LRA-Inc.com

Planned Spacing Unit Exhibit
Midtown Directional Project
Glenmere

- ALIQUOT CORNER
- ⊙ BOTTOM HOLE
- ⊠ COMPUTED ALIQUOT CORNER

LEGEND

- △ COMPUTED ALIQUOT CORNER FROM MONUMENT RECORDS
- ⊠ COMPUTED FROM GLO RECORDS

drawn by JPM date 7/21/14 cogcc id project - task number 0210035.00-502 book and page

surface - location NE/4,NW/4, SEC 9 T5N R65W

SECTION LINE
QUARTER SECTION LINE
SIXTEENTH LINE