

WELL LOCATION DATA:

LATITUDE: 40.41750°N
LONGITUDE: 104.67166°W
ELEVATION: 4635'
PDOP: 1.7
OPERATOR: CRW
SURFACE USE: INDUSTRIAL
PROPOSED GROUND ELEVATION: 4635'

NEAREST CULTURAL ITEMS:

BUILDING: 534'
BUILDING UNIT: 532'
HIGH OCCUPANCY BUILDING UNIT: 3459'+
DESIGNATED OUTSIDE ACTIVITY AREA: 5280'+
PUBLIC ROAD: 426'
ABOVE GROUND UTILITY: 408'
RAILROAD: 4026'
PROPERTY LINE: 232'

NOTES:

1. DISTANCES ARE MEASURED PERPENDICULAR TO NEAREST SECTION LINE AND ARE SHOWN ON THE SAME SIDE OF THE SECTION LINE WHERE THE WELL IS LOCATED.
2. THIS MAP DOES NOT REPRESENT A MONUMENTED BOUNDARY SURVEY. SIXTEENTH CORNER LOCATIONS ARE COMPUTED, UNLESS OTHERWISE NOTED.
3. BOTTOM HOLE LOCATIONS AND HORIZONTAL COMPLETION ZONE PROVIDED BY OTHERS.

BASIS OF BEARING:

THE NORTH LINE OF THE NORTHEAST QUARTER OF SECTION 9-T5N-R65W BEARS N87°38'26"E BETWEEN THE NORTH QUARTER CORNER OF SECTION 9 MONUMENTED WITH A 3 1/4" A.C. STAMPED "PLS 33642" AND THE NORTHEAST CORNER OF SECTION 9 MONUMENTED WITH A 3 1/4" A.C. STAMPED "LS 4392" BASED ON THE COLORADO NORTH 0501 STATE PLANE COORDINATE SYSTEM.

ELEVATIONS ARE BASED ON NAVD 88, AS OBSERVED FROM GPS OBSERVATIONS

LEGEND

- | | | | |
|---|--|------|---|
| ● | ALIQUOT CORNER | △ | COMPUTED ALIQUOT CORNER FROM MONUMENT ACCESSORIES |
| ⊙ | BOTTOM HOLE | A.C. | ALUMINUM CAP |
| ■ | COMPUTED ALIQUOT CORNER FROM GLO RECORDS | R.B. | RANGE BOX |

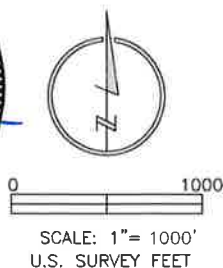
LAND SURVEYOR'S CERTIFICATION

LAMP, RYNEARSON & ASSOCIATES, INC., OF FT. COLLINS, COLORADO HAS, IN ACCORDANCE WITH A REQUEST FROM DUSTIN DYK FOR EXTRACTION OIL AND GAS, DETERMINED THE SURFACE LOCATION OF THE WELL DESIGNATED AS MT-GLENMERE 2-8-7 TO BE 1212' FROM THE NORTH LINE AND 1756' FROM THE WEST LINE OF SECTION 9 TOWNSHIP 5 NORTH, RANGE 65 WEST OF THE 6TH P.M., WELD COUNTY, COLORADO.



FRANK A. KOHL
COLORADO PLS 37067

DATE OF SURVEY: 3/15/2012 (SECTION CONTROL)
DATE OF SURVEY: 7/09/2014 (WELL LOCATION)



**LAMP RYNEARSON
& ASSOCIATES**

4715 Innovation Drive 970.226.0342 | P
Fort Collins, CO 80525 970.226.0879 | F
www.LRA-Inc.com

Proposed Well Location Exhibit
MT-GLENMERE 2-8-7
1 OF 3

drawn by

JPM

date

3/26/15

cogcc id

project - task number

0210035.00-502

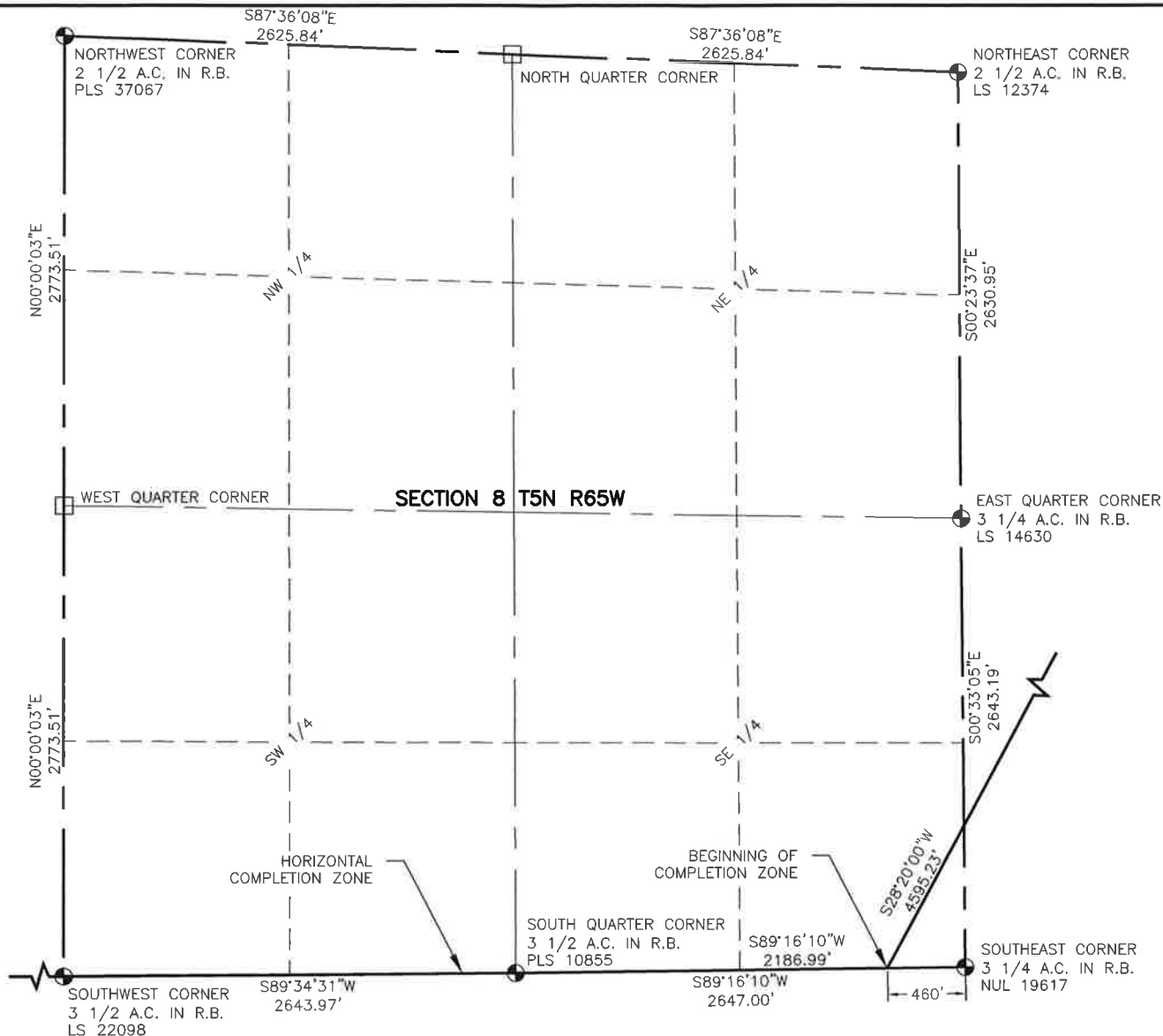
book and page

MR01/MR02

surface - location

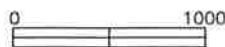
NE/4,NW/4, SEC 9 T5N R65W

path/filename P:_Engineering\0210035 MRI Midtown\DRAWINGS\EXHIBITS\0210035EXWP-0010.dwg



NOTES:

1. DISTANCES ARE MEASURED PERPENDICULAR TO NEAREST SECTION LINE AND ARE SHOWN ON THE SAME SIDE OF THE SECTION LINE WHERE THE WELL IS LOCATED.
2. THIS MAP DOES NOT REPRESENT A MONUMENTED BOUNDARY SURVEY. SIXTEENTH CORNER LOCATIONS ARE COMPUTED, UNLESS OTHERWISE NOTED.
3. BOTTOM HOLE LOCATIONS AND HORIZONTAL COMPLETION ZONE PROVIDED BY OTHERS.



SCALE: 1" = 1000'
U.S. SURVEY FEET

LEGEND

- COMPUTED ALIQUOT CORNER FROM GLO RECORDS
- A.C. ALUMINUM CAP
- R.B. RANGE BOX
- ALIQUOT CORNER
- BOTTOM HOLE
- PROPOSED WELL
- COMPUTED ALIQUOT CORNER LOCATION



**LAMP RYNEARSON
& ASSOCIATES**

4715 Innovation Drive 970.226.0342 | P
Fort Collins, CO 80525 970.226.0879 | F
www.LRA-Inc.com

Proposed Well Location Exhibit
MT-GLENMERE 2-8-7
2 OF 3

drawn by

JPM

date

3/26/15

cogcc id

project - task number

0210035.00-502

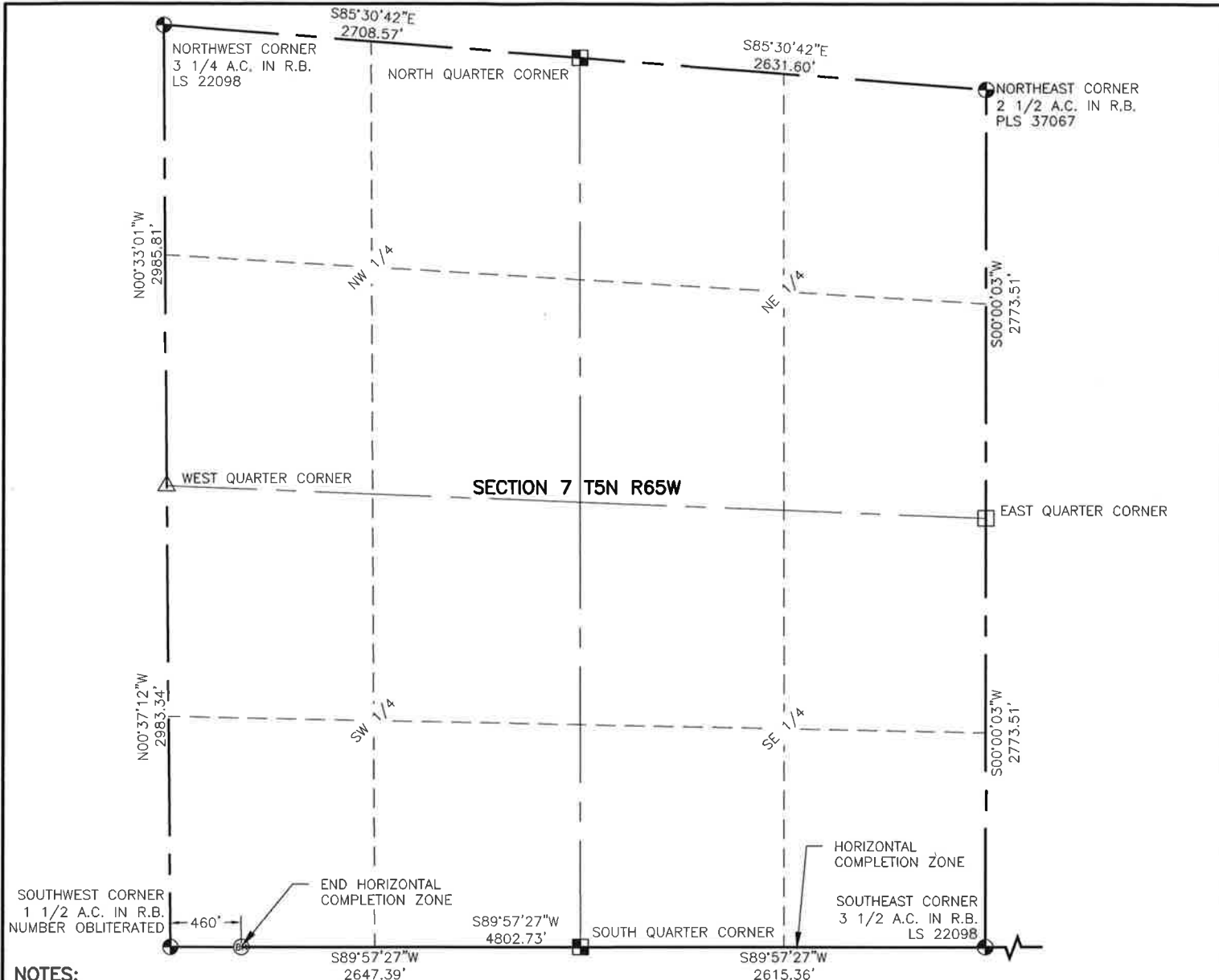
book and page

MR01/MR02

surface - location

NE/4,NW/4, SEC 9 T5N R65W

path/filename P:_Engineering\0210035 MRI Midtown\DRAWINGS\EXHIBITS\0210035EXWP-0011.dwg



NOTES:

1. DISTANCES ARE MEASURED PERPENDICULAR TO NEAREST SECTION LINE AND ARE SHOWN ON THE SAME SIDE OF THE SECTION LINE WHERE THE WELL IS LOCATED.
2. THIS MAP DOES NOT REPRESENT A MONUMENTED BOUNDARY SURVEY. SIXTEENTH CORNER LOCATIONS ARE COMPUTED, UNLESS OTHERWISE NOTED.
3. BOTTOM HOLE LOCATIONS AND HORIZONTAL COMPLETION ZONE PROVIDED BY OTHERS.



SCALE: 1" = 1000'
U.S. SURVEY FEET

LEGEND

- | | | | |
|---|---|------|----------------------------------|
| ● | ALIQUOT CORNER | □ | COMPUTED ALIQUOT CORNER LOCATION |
| ⊙ | BOTTOM HOLE | A.C. | ALUMINUM CAP |
| ■ | COMPUTED ALIQUOT CORNER FROM GLO RECORDS | R.B. | RANGE BOX |
| △ | COMPUTED ALIQUOT CORNER FROM MONUMENT ACCESSORIES | | |



**LAMP RYNEARSON
& ASSOCIATES**

4715 Innovation Drive 970.226.0342 | P
Fort Collins, CO 80525 970.226.0879 | F
www.LRA-Inc.com

Proposed Well Location Exhibit
MT-GLENMERE 2-8-7
3 OF 3

drawn by

JPM

date

3/26/15

cogcc id

project - task number

0210035.00-502

book and page

MR01/MR02

surface - location

NE/4,NW/4, SEC 9 T5N R65W

path\filename P:_Engineering\0210035 MRI Midtown\DRAWINGS\EXHIBITS\0210035EXWP-0012.dwg