

PDC ENERGY

**WELD COUNTY, COLORADO
NE SW SEC. 7 T4N R64W 6th P.M.
HONEBEIN 7K-323**

ORIGINAL WELLBORE

09 July, 2015

Plan: PROPOSAL #2



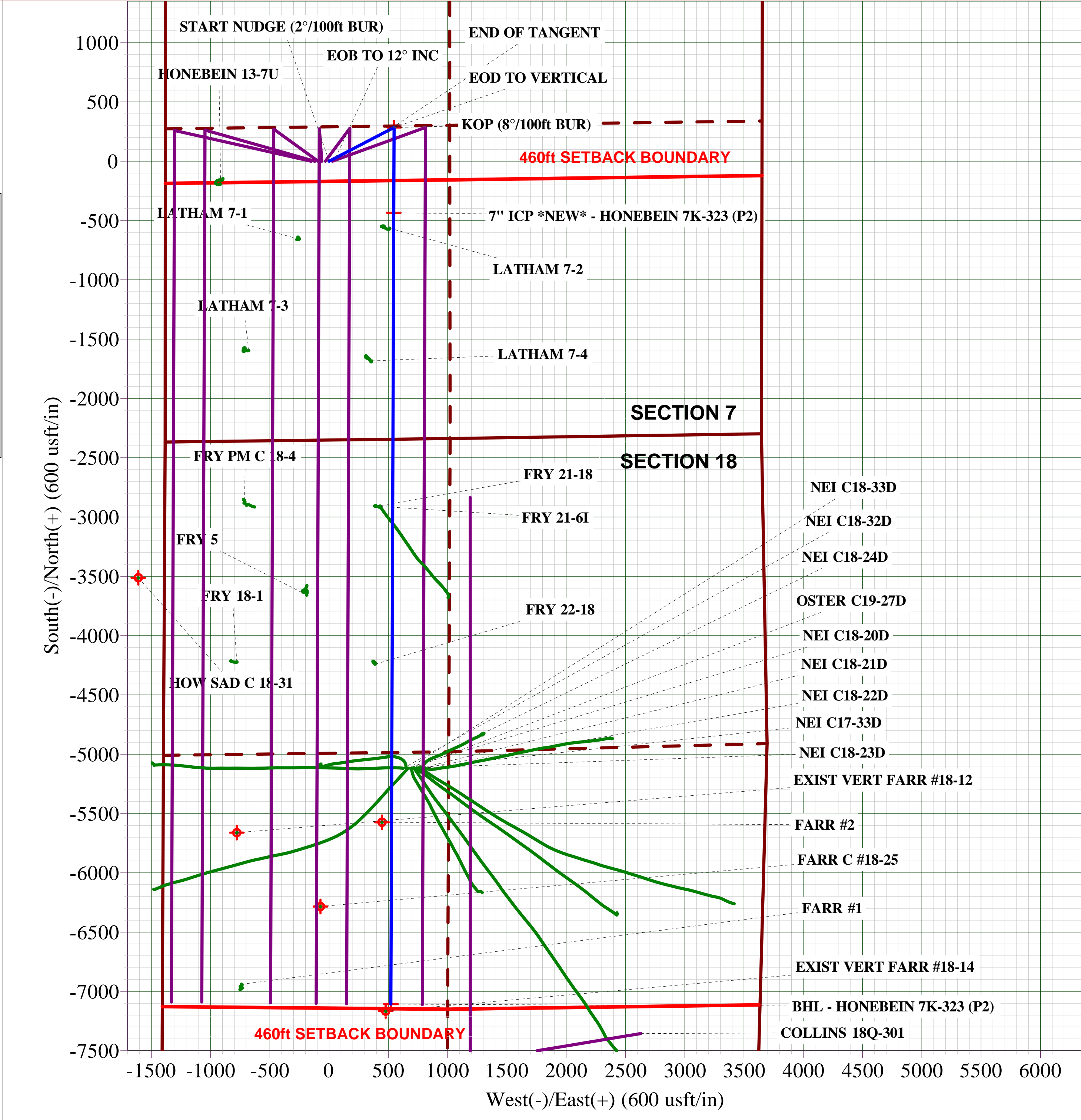
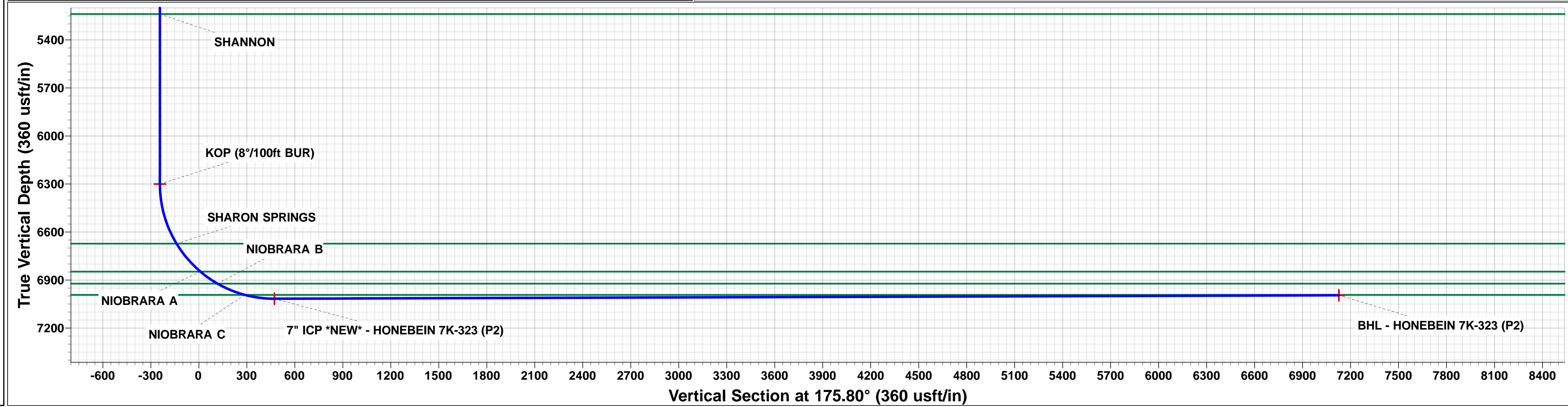
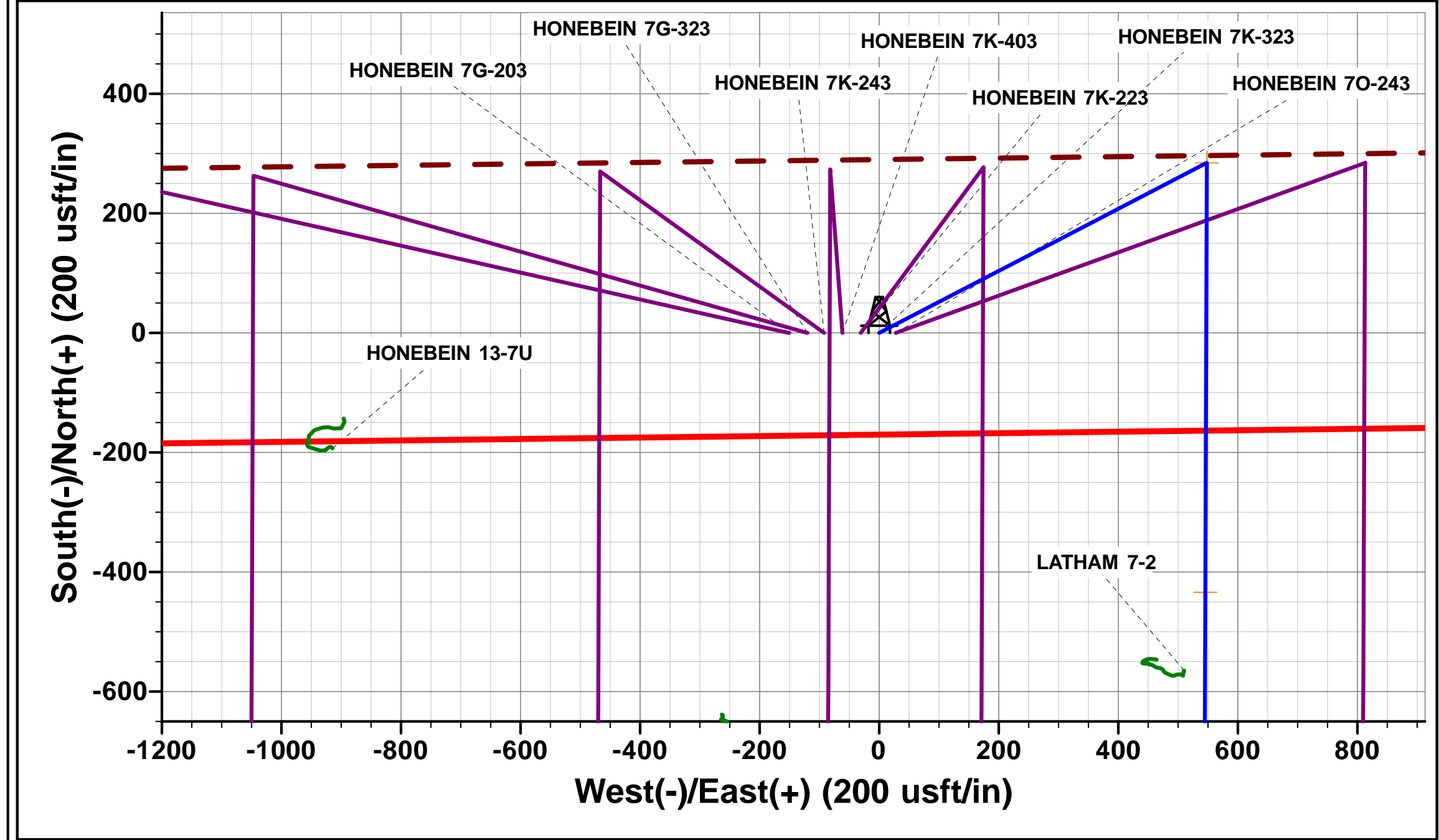
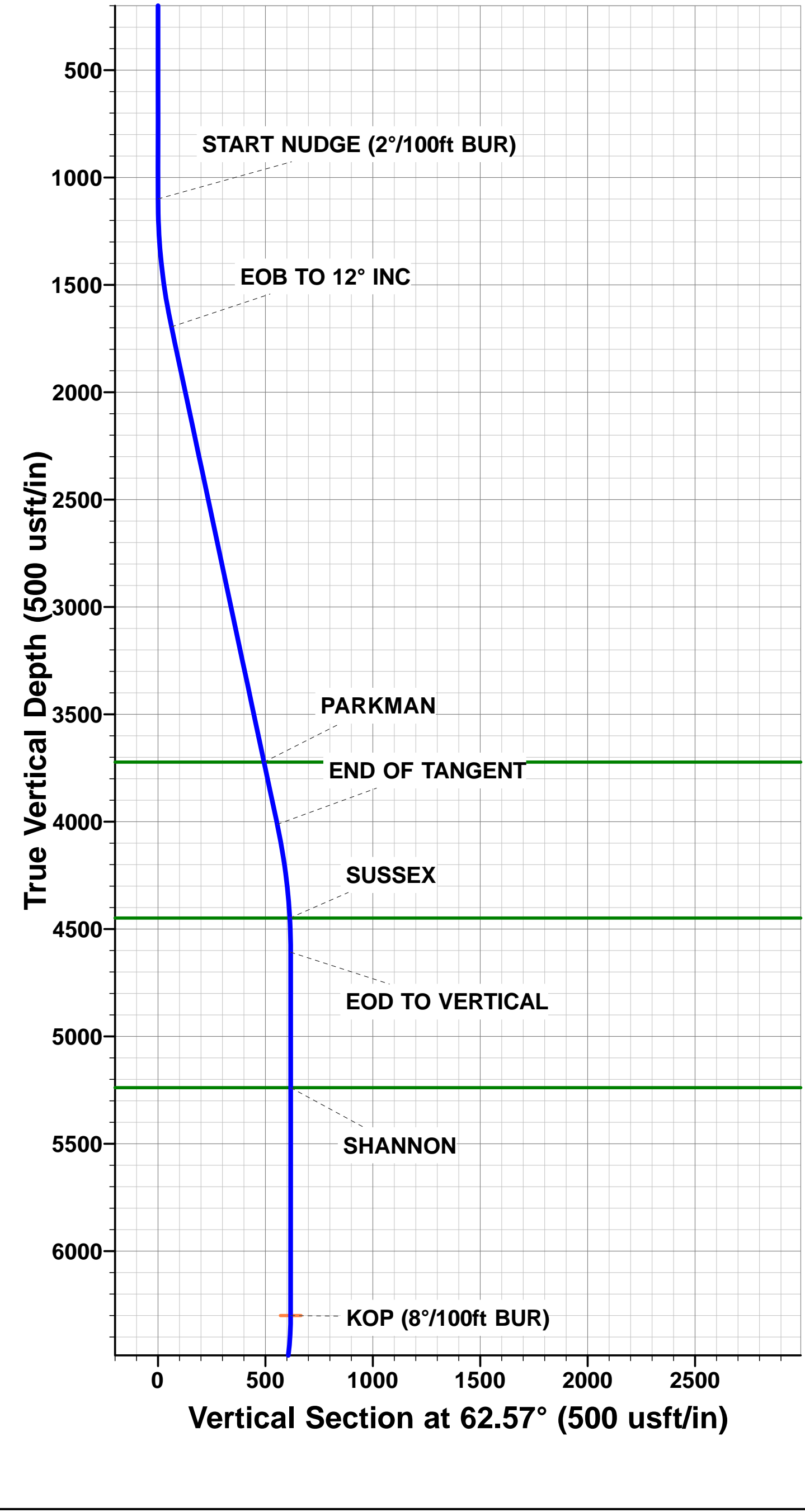


Project: WELD COUNTY, COLORADO
Site: NE SW SEC. 7 T4N R64W 6th P.M.
Well: HONEBEIN 7K-323
Wellbore: ORIGINAL WELLBORE
Design: PROPOSAL #2

ANNOTATIONS										
TVD	MD	Inc	Azi	+N/-S	+E/-W	VSec	Dep	Annotation		
1100.0	1100.0	0.00	0.00	0.0	0.0	0.0	0.0	START NUDGE (2°/100ft BUR)		
1695.6	1700.0	12.00	62.57	28.8	55.6	-24.7	62.6	EOB TO 12° INC		
4012.8	4068.9	12.00	62.57	255.8	492.7	-219.0	555.2	END OF TANGENT		
4608.4	4668.9	0.00	62.57	284.6	548.3	-243.7	617.8	EOD TO VERTICAL		
6300.4	6360.9	0.00	0.00	284.6	548.3	-243.7	617.8	KOP (8°/100ft BUR)		
7016.6	7488.2	90.18	180.21	-433.9	545.7	472.6	1336.2	7" ICP *NEW* - HONEBEIN 7K-323 (P2)		
6995.0	14162.0	90.19	180.20	-7107.6	521.6	7126.7	8010.0	BHL - HONEBEIN 7K-323 (P2)		

PROPOSED LOCAL COORDINATES:
SHL: 2352ft FSL & 1380t FWL Sec 7
7" ICP *NEW*: 1908.6ft FSL & 1929ft FWL Sec 7
BHL: 500ft FSL & 1929ft FWL of Sec 18

WELLBORE TARGET DETAILS (LAT/LONG)					
Name	TVD	+N/-S	+E/-W	Latitude	Longitude
KOP - HONEBEIN 7K-323 (P2)	6300.4	284.6	548.3	40.326711	-104.595124
BHL - HONEBEIN 7K-323 (P2)	6995.0	-7107.6	521.6	40.306420	-104.595220
7" ICP *NEW* - HONEBEIN 7K-323 (P2)	7016.6	-433.8	545.7	40.324739	-104.595133



Planning Report



Database:	EDM 5000.1 Single User Db	Local Co-ordinate Reference:	Well HONEBEIN 7K-323
Company:	PDC ENERGY	TVD Reference:	KB-EST @ 4864.5usft (Original Well Elev)
Project:	WELD COUNTY, COLORADO	MD Reference:	KB-EST @ 4864.5usft (Original Well Elev)
Site:	NE SW SEC. 7 T4N R64W 6th P.M.	North Reference:	True
Well:	HONEBEIN 7K-323	Survey Calculation Method:	Minimum Curvature
Wellbore:	ORIGINAL WELLBORE		
Design:	PROPOSAL #2		

Project	WELD COUNTY, COLORADO		
Map System:	US State Plane 1983	System Datum:	Mean Sea Level
Geo Datum:	North American Datum 1983		
Map Zone:	Colorado Northern Zone		Using geodetic scale factor

Site	NE SW SEC. 7 T4N R64W 6th P.M.		
Site Position:		Northing:	1,362,859.07 usft
From:	Lat/Long	Easting:	3,251,768.07 usft
Position Uncertainty:	0.0 usft	Slot Radius:	1.10000ft
		Latitude:	40.325930
		Longitude:	-104.596990
		Grid Convergence:	0.58 °

Well	HONEBEIN 7K-323		
Well Position	+N/-S	0.0 usft	Northing:
	+E/-W	-27.9 usft	Easting:
Position Uncertainty	0.0 usft		Wellhead Elevation:
			Latitude:
			Longitude:
			Ground Level:

Wellbore	ORIGINAL WELLBORE				
Magnetics	Model Name	Sample Date	Declination (°)	Dip Angle (°)	Field Strength (nT)
	IGRF2015	30/06/2015	8.32	66.87	52,595

Design	PROPOSAL #2			
Audit Notes:				
Version:	Phase:	PROTOTYPE	Tie On Depth:	0.0
Vertical Section:	Depth From (TVD) (usft)	+N/-S (usft)	+E/-W (usft)	Direction (°)
	6,995.0	0.0	0.0	175.80

Plan Sections											
MD (usft)	Inc (°)	Azi (°)	Vertical Depth	SS (usft)	+N/-S (usft)	+E/-W (usft)	Dogleg Rate (°/100usf)	Build Rate (°/100usf)	Turn Rate (°/100usf)	TFO (°)	Target
0.0	0.00	0.00	0.0	-4,864.5	0.0	0.0	0.00	0.00	0.00	0.00	
1,100.0	0.00	0.00	1,100.0	-3,764.5	0.0	0.0	0.00	0.00	0.00	0.00	
1,700.0	12.00	62.57	1,695.7	-3,168.8	28.8	55.6	2.00	2.00	0.00	62.57	
4,068.9	12.00	62.57	4,012.7	-851.8	255.8	492.7	0.00	0.00	0.00	0.00	
4,668.9	0.00	0.00	4,608.4	-256.1	284.6	548.3	2.00	-2.00	0.00	180.00	
6,360.9	0.00	0.00	6,300.4	1,435.9	284.6	548.3	0.00	0.00	0.00	0.00	KOP - HONEBEIN
7,488.2	90.18	180.21	7,016.6	2,152.1	-433.8	545.7	8.00	8.00	0.00	180.21	
14,162.0	90.19	180.20	6,995.0	2,130.5	-7,107.6	521.6	0.00	0.00	0.00	-29.11	BHL - HONEBEIN

Planning Report



Database:	EDM 5000.1 Single User Db	Local Co-ordinate Reference:	Well HONEBEIN 7K-323
Company:	PDC ENERGY	TVD Reference:	KB-EST @ 4864.5usft (Original Well Elev)
Project:	WELD COUNTY, COLORADO	MD Reference:	KB-EST @ 4864.5usft (Original Well Elev)
Site:	NE SW SEC. 7 T4N R64W 6th P.M.	North Reference:	True
Well:	HONEBEIN 7K-323	Survey Calculation Method:	Minimum Curvature
Wellbore:	ORIGINAL WELLBORE		
Design:	PROPOSAL #2		

Planned Survey										
MD (usft)	Inc (°)	Azi (°)	TVD (usft)	SS (usft)	+N/-S (usft)	+E/-W (usft)	Vertical Section (usft)	Dogleg Rate (°/100usft)	Build Rate (°/100usft)	Turn Rate (°/100usft)
0.0	0.00	0.00	0.0	4,864.50	0.0	0.0	0.0	0.00	0.00	0.00
100.0	0.00	0.00	100.0	4,764.50	0.0	0.0	0.0	0.00	0.00	0.00
200.0	0.00	0.00	200.0	4,664.50	0.0	0.0	0.0	0.00	0.00	0.00
300.0	0.00	0.00	300.0	4,564.50	0.0	0.0	0.0	0.00	0.00	0.00
400.0	0.00	0.00	400.0	4,464.50	0.0	0.0	0.0	0.00	0.00	0.00
500.0	0.00	0.00	500.0	4,364.50	0.0	0.0	0.0	0.00	0.00	0.00
600.0	0.00	0.00	600.0	4,264.50	0.0	0.0	0.0	0.00	0.00	0.00
700.0	0.00	0.00	700.0	4,164.50	0.0	0.0	0.0	0.00	0.00	0.00
800.0	0.00	0.00	800.0	4,064.50	0.0	0.0	0.0	0.00	0.00	0.00
900.0	0.00	0.00	900.0	3,964.50	0.0	0.0	0.0	0.00	0.00	0.00
1,000.0	0.00	0.00	1,000.0	3,864.50	0.0	0.0	0.0	0.00	0.00	0.00
START NUDGE (2°/100ft BUR)										
1,100.0	0.00	0.00	1,100.0	3,764.50	0.0	0.0	0.0	0.00	0.00	0.00
1,200.0	2.00	62.57	1,200.0	3,664.52	0.8	1.5	-0.7	2.00	2.00	0.00
1,300.0	4.00	62.57	1,299.8	3,564.66	3.2	6.2	-2.8	2.00	2.00	0.00
1,400.0	6.00	62.57	1,399.5	3,465.05	7.2	13.9	-6.2	2.00	2.00	0.00
1,500.0	8.00	62.57	1,498.7	3,365.80	12.8	24.7	-11.0	2.00	2.00	0.00
1,600.0	10.00	62.57	1,597.5	3,267.03	20.1	38.6	-17.2	2.00	2.00	0.00
EOB TO 12° INC										
1,700.0	12.00	62.57	1,695.6	3,168.88	28.8	55.6	-24.7	2.00	2.00	0.00
1,800.0	12.00	62.57	1,793.4	3,071.06	38.4	74.0	-32.9	0.00	0.00	0.00
1,900.0	12.00	62.57	1,891.3	2,973.25	48.0	92.5	-41.1	0.00	0.00	0.00
2,000.0	12.00	62.57	1,989.1	2,875.43	57.6	110.9	-49.3	0.00	0.00	0.00
2,100.0	12.00	62.57	2,086.9	2,777.62	67.2	129.4	-57.5	0.00	0.00	0.00
2,200.0	12.00	62.57	2,184.7	2,679.80	76.7	147.8	-65.7	0.00	0.00	0.00
2,300.0	12.00	62.57	2,282.5	2,581.99	86.3	166.3	-73.9	0.00	0.00	0.00
2,400.0	12.00	62.57	2,380.3	2,484.18	95.9	184.7	-82.1	0.00	0.00	0.00
2,500.0	12.00	62.57	2,478.1	2,386.36	105.5	203.2	-90.3	0.00	0.00	0.00
2,600.0	12.00	62.57	2,576.0	2,288.55	115.1	221.7	-98.5	0.00	0.00	0.00
2,700.0	12.00	62.57	2,673.8	2,190.73	124.6	240.1	-106.7	0.00	0.00	0.00
2,800.0	12.00	62.57	2,771.6	2,092.92	134.2	258.6	-114.9	0.00	0.00	0.00
2,900.0	12.00	62.57	2,869.4	1,995.10	143.8	277.0	-123.1	0.00	0.00	0.00
3,000.0	12.00	62.57	2,967.2	1,897.29	153.4	295.5	-131.3	0.00	0.00	0.00
3,100.0	12.00	62.57	3,065.0	1,799.47	162.9	313.9	-139.5	0.00	0.00	0.00
3,200.0	12.00	62.57	3,162.8	1,701.66	172.5	332.4	-147.7	0.00	0.00	0.00
3,300.0	12.00	62.57	3,260.7	1,603.84	182.1	350.8	-155.9	0.00	0.00	0.00
3,400.0	12.00	62.57	3,358.5	1,506.03	191.7	369.3	-164.1	0.00	0.00	0.00
3,500.0	12.00	62.57	3,456.3	1,408.22	201.3	387.7	-172.3	0.00	0.00	0.00
3,600.0	12.00	62.57	3,554.1	1,310.40	210.8	406.2	-180.5	0.00	0.00	0.00
3,700.0	12.00	62.57	3,651.9	1,212.59	220.4	424.7	-188.8	0.00	0.00	0.00
PARKMAN										
3,772.2	12.00	62.57	3,722.5	1,142.00	227.3	438.0	-194.7	0.00	0.00	0.00
3,800.0	12.00	62.57	3,749.7	1,114.77	230.0	443.1	-197.0	0.00	0.00	0.00
3,900.0	12.00	62.57	3,847.5	1,016.96	239.6	461.6	-205.2	0.00	0.00	0.00
4,000.0	12.00	62.57	3,945.4	919.14	249.2	480.0	-213.4	0.00	0.00	0.00
END OF TANGENT										
4,068.9	12.00	62.57	4,012.8	851.75	255.8	492.7	-219.0	0.00	0.00	0.00
4,100.0	11.38	62.57	4,043.2	821.29	258.7	498.3	-221.5	2.00	-2.00	0.00
4,200.0	9.38	62.57	4,141.6	722.94	267.0	514.3	-228.6	2.00	-2.00	0.00
4,300.0	7.38	62.57	4,240.5	624.01	273.7	527.2	-234.4	2.00	-2.00	0.00
4,400.0	5.38	62.57	4,339.9	524.63	278.8	537.1	-238.7	2.00	-2.00	0.00
4,500.0	3.38	62.57	4,439.6	424.93	282.3	543.9	-241.7	2.00	-2.00	0.00
SUSSEX										
4,508.9	3.20	62.57	4,448.5	416.00	282.5	544.3	-241.9	2.00	-2.00	0.00

Planning Report



Database:	EDM 5000.1 Single User Db	Local Co-ordinate Reference:	Well HONEBEIN 7K-323
Company:	PDC ENERGY	TVD Reference:	KB-EST @ 4864.5usft (Original Well Elev)
Project:	WELD COUNTY, COLORADO	MD Reference:	KB-EST @ 4864.5usft (Original Well Elev)
Site:	NE SW SEC. 7 T4N R64W 6th P.M.	North Reference:	True
Well:	HONEBEIN 7K-323	Survey Calculation Method:	Minimum Curvature
Wellbore:	ORIGINAL WELLBORE		
Design:	PROPOSAL #2		

Planned Survey										
MD (usft)	Inc (°)	Azi (°)	TVD (usft)	SS (usft)	+N/-S (usft)	+E/-W (usft)	Vertical Section (usft)	Dogleg Rate (°/100usft)	Build Rate (°/100usft)	Turn Rate (°/100usft)
4,600.0	1.38	62.57	4,539.5	325.02	284.2	547.6	-243.4	2.00	-2.00	0.00
EOD TO VERTICAL										
4,668.9	0.00	62.57	4,608.4	256.13	284.6	548.3	-243.7	2.00	-2.00	0.00
4,700.0	0.00	0.00	4,639.5	225.03	284.6	548.3	-243.7	0.00	0.00	0.00
4,800.0	0.00	0.00	4,739.5	125.03	284.6	548.3	-243.7	0.00	0.00	0.00
4,900.0	0.00	0.00	4,839.5	25.03	284.6	548.3	-243.7	0.00	0.00	0.00
5,000.0	0.00	0.00	4,939.5	-74.97	284.6	548.3	-243.7	0.00	0.00	0.00
5,100.0	0.00	0.00	5,039.5	-174.97	284.6	548.3	-243.7	0.00	0.00	0.00
5,200.0	0.00	0.00	5,139.5	-274.97	284.6	548.3	-243.7	0.00	0.00	0.00
SHANNON										
5,299.0	0.00	0.00	5,238.5	-374.00	284.6	548.3	-243.7	0.00	0.00	0.00
5,300.0	0.00	0.00	5,239.5	-374.97	284.6	548.3	-243.7	0.00	0.00	0.00
5,400.0	0.00	0.00	5,339.5	-474.97	284.6	548.3	-243.7	0.00	0.00	0.00
5,500.0	0.00	0.00	5,439.5	-574.97	284.6	548.3	-243.7	0.00	0.00	0.00
5,600.0	0.00	0.00	5,539.5	-674.97	284.6	548.3	-243.7	0.00	0.00	0.00
5,700.0	0.00	0.00	5,639.5	-774.97	284.6	548.3	-243.7	0.00	0.00	0.00
5,800.0	0.00	0.00	5,739.5	-874.97	284.6	548.3	-243.7	0.00	0.00	0.00
5,900.0	0.00	0.00	5,839.5	-974.97	284.6	548.3	-243.7	0.00	0.00	0.00
6,000.0	0.00	0.00	5,939.5	-1,074.97	284.6	548.3	-243.7	0.00	0.00	0.00
6,100.0	0.00	0.00	6,039.5	-1,174.97	284.6	548.3	-243.7	0.00	0.00	0.00
6,200.0	0.00	0.00	6,139.5	-1,274.97	284.6	548.3	-243.7	0.00	0.00	0.00
6,300.0	0.00	0.00	6,239.5	-1,374.97	284.6	548.3	-243.7	0.00	0.00	0.00
KOP (8°/100ft BUR)										
6,360.9	0.00	0.00	6,300.4	-1,435.87	284.6	548.3	-243.7	0.00	0.00	0.00
6,400.0	3.13	180.21	6,339.5	-1,474.95	283.5	548.3	-242.6	7.99	7.99	0.00
6,500.0	11.13	180.21	6,438.6	-1,574.10	271.1	548.3	-230.3	8.00	8.00	0.00
6,600.0	19.13	180.21	6,535.1	-1,670.56	245.1	548.2	-204.3	8.00	8.00	0.00
6,700.0	27.13	180.21	6,626.9	-1,762.45	205.8	548.0	-165.2	8.00	8.00	0.00
SHARON SPRINGS										
6,752.2	31.30	180.21	6,672.5	-1,808.00	180.4	547.9	-139.8	8.00	8.00	0.00
6,800.0	35.13	180.21	6,712.5	-1,847.98	154.2	547.8	-113.7	8.00	8.00	0.00
6,900.0	43.13	180.21	6,790.0	-1,925.49	91.1	547.6	-50.8	8.00	8.00	0.00
NIOBRARA A										
6,983.5	49.81	180.21	6,847.5	-1,983.00	30.6	547.4	9.5	8.00	8.00	0.00
7,000.0	51.13	180.21	6,858.0	-1,993.48	17.9	547.3	22.2	8.00	8.00	0.00
7,100.0	59.13	180.21	6,915.1	-2,050.61	-64.1	547.0	103.9	8.00	8.00	0.00
NIOBRARA B										
7,114.7	60.30	180.21	6,922.5	-2,058.00	-76.7	547.0	116.6	8.00	8.00	0.00
7,200.0	67.13	180.21	6,960.3	-2,095.78	-153.2	546.7	192.8	8.00	8.00	0.00
NIOBRARA C										
7,299.6	75.10	180.21	6,992.5	-2,128.00	-247.4	546.4	286.7	8.00	8.00	0.00
7,300.0	75.13	180.21	6,992.6	-2,128.10	-247.7	546.3	287.1	8.00	8.00	0.00
7,400.0	83.13	180.21	7,011.4	-2,146.95	-345.9	546.0	384.9	8.00	8.00	0.00
7" ICP *NEW* - HONEBEIN 7K-323 (P2)										
7,488.2	90.18	180.21	7,016.6	-2,152.09	-433.9	545.7	472.6	8.00	8.00	0.00
7,500.0	90.18	180.21	7,016.6	-2,152.06	-445.7	545.6	484.4	0.00	0.00	0.00
7,600.0	90.18	180.21	7,016.2	-2,151.74	-545.7	545.3	584.1	0.00	0.00	0.00
7,700.0	90.18	180.21	7,015.9	-2,151.43	-645.7	544.9	683.8	0.00	0.00	0.00
7,800.0	90.18	180.21	7,015.6	-2,151.11	-745.7	544.5	783.5	0.00	0.00	0.00
7,900.0	90.18	180.21	7,015.3	-2,150.80	-845.7	544.2	883.2	0.00	0.00	0.00
8,000.0	90.18	180.21	7,015.0	-2,150.48	-945.7	543.8	982.9	0.00	0.00	0.00
8,100.0	90.18	180.21	7,014.7	-2,150.17	-1,045.7	543.4	1,082.6	0.00	0.00	0.00
8,200.0	90.18	180.21	7,014.4	-2,149.85	-1,145.7	543.1	1,182.3	0.00	0.00	0.00

Planning Report



Database:	EDM 5000.1 Single User Db	Local Co-ordinate Reference:	Well HONEBEIN 7K-323
Company:	PDC ENERGY	TVD Reference:	KB-EST @ 4864.5usft (Original Well Elev)
Project:	WELD COUNTY, COLORADO	MD Reference:	KB-EST @ 4864.5usft (Original Well Elev)
Site:	NE SW SEC. 7 T4N R64W 6th P.M.	North Reference:	True
Well:	HONEBEIN 7K-323	Survey Calculation Method:	Minimum Curvature
Wellbore:	ORIGINAL WELLBORE		
Design:	PROPOSAL #2		

Planned Survey										
MD (usft)	Inc (°)	Azi (°)	TVD (usft)	SS (usft)	+N/-S (usft)	+E/-W (usft)	Vertical Section (usft)	Dogleg Rate (°/100usft)	Build Rate (°/100usft)	Turn Rate (°/100usft)
8,300.0	90.18	180.21	7,014.0	-2,149.53	-1,245.7	542.7	1,282.0	0.00	0.00	0.00
8,400.0	90.18	180.21	7,013.7	-2,149.22	-1,345.7	542.3	1,381.7	0.00	0.00	0.00
8,500.0	90.18	180.21	7,013.4	-2,148.90	-1,445.7	542.0	1,481.4	0.00	0.00	0.00
8,600.0	90.18	180.21	7,013.1	-2,148.58	-1,545.7	541.6	1,581.1	0.00	0.00	0.00
8,700.0	90.18	180.21	7,012.8	-2,148.27	-1,645.7	541.2	1,680.8	0.00	0.00	0.00
8,800.0	90.18	180.21	7,012.4	-2,147.95	-1,745.7	540.9	1,780.6	0.00	0.00	0.00
8,900.0	90.18	180.21	7,012.1	-2,147.63	-1,845.6	540.5	1,880.3	0.00	0.00	0.00
9,000.0	90.18	180.21	7,011.8	-2,147.31	-1,945.6	540.1	1,980.0	0.00	0.00	0.00
9,100.0	90.18	180.21	7,011.5	-2,146.99	-2,045.6	539.8	2,079.7	0.00	0.00	0.00
9,200.0	90.18	180.21	7,011.2	-2,146.67	-2,145.6	539.4	2,179.4	0.00	0.00	0.00
9,300.0	90.18	180.21	7,010.9	-2,146.36	-2,245.6	539.1	2,279.1	0.00	0.00	0.00
9,400.0	90.18	180.21	7,010.5	-2,146.04	-2,345.6	538.7	2,378.8	0.00	0.00	0.00
9,500.0	90.18	180.21	7,010.2	-2,145.72	-2,445.6	538.3	2,478.5	0.00	0.00	0.00
9,600.0	90.18	180.21	7,009.9	-2,145.40	-2,545.6	538.0	2,578.2	0.00	0.00	0.00
9,700.0	90.18	180.21	7,009.6	-2,145.08	-2,645.6	537.6	2,677.9	0.00	0.00	0.00
9,800.0	90.18	180.21	7,009.3	-2,144.76	-2,745.6	537.2	2,777.6	0.00	0.00	0.00
9,900.0	90.18	180.21	7,008.9	-2,144.43	-2,845.6	536.9	2,877.3	0.00	0.00	0.00
10,000.0	90.18	180.21	7,008.6	-2,144.11	-2,945.6	536.5	2,977.0	0.00	0.00	0.00
10,100.0	90.18	180.21	7,008.3	-2,143.79	-3,045.6	536.1	3,076.7	0.00	0.00	0.00
10,200.0	90.18	180.21	7,008.0	-2,143.47	-3,145.6	535.8	3,176.4	0.00	0.00	0.00
10,300.0	90.18	180.21	7,007.6	-2,143.15	-3,245.6	535.4	3,276.1	0.00	0.00	0.00
10,400.0	90.18	180.21	7,007.3	-2,142.83	-3,345.6	535.1	3,375.8	0.00	0.00	0.00
10,500.0	90.18	180.21	7,007.0	-2,142.50	-3,445.6	534.7	3,475.5	0.00	0.00	0.00
10,600.0	90.19	180.21	7,006.7	-2,142.18	-3,545.6	534.3	3,575.2	0.00	0.00	0.00
10,700.0	90.19	180.21	7,006.4	-2,141.86	-3,645.6	534.0	3,674.9	0.00	0.00	0.00
10,800.0	90.19	180.21	7,006.0	-2,141.53	-3,745.6	533.6	3,774.6	0.00	0.00	0.00
10,900.0	90.19	180.21	7,005.7	-2,141.21	-3,845.6	533.3	3,874.3	0.00	0.00	0.00
11,000.0	90.19	180.21	7,005.4	-2,140.89	-3,945.6	532.9	3,974.0	0.00	0.00	0.00
11,100.0	90.19	180.21	7,005.1	-2,140.56	-4,045.6	532.5	4,073.7	0.00	0.00	0.00
11,200.0	90.19	180.21	7,004.7	-2,140.24	-4,145.6	532.2	4,173.5	0.00	0.00	0.00
11,300.0	90.19	180.21	7,004.4	-2,139.91	-4,245.6	531.8	4,273.2	0.00	0.00	0.00
11,400.0	90.19	180.21	7,004.1	-2,139.59	-4,345.6	531.4	4,372.9	0.00	0.00	0.00
11,500.0	90.19	180.21	7,003.8	-2,139.26	-4,445.6	531.1	4,472.6	0.00	0.00	0.00
11,600.0	90.19	180.21	7,003.4	-2,138.94	-4,545.6	530.7	4,572.3	0.00	0.00	0.00
11,700.0	90.19	180.21	7,003.1	-2,138.61	-4,645.6	530.4	4,672.0	0.00	0.00	0.00
11,800.0	90.19	180.21	7,002.8	-2,138.29	-4,745.6	530.0	4,771.7	0.00	0.00	0.00
11,900.0	90.19	180.21	7,002.5	-2,137.96	-4,845.6	529.6	4,871.4	0.00	0.00	0.00
12,000.0	90.19	180.21	7,002.1	-2,137.63	-4,945.6	529.3	4,971.1	0.00	0.00	0.00
12,100.0	90.19	180.21	7,001.8	-2,137.31	-5,045.6	528.9	5,070.8	0.00	0.00	0.00
12,200.0	90.19	180.21	7,001.5	-2,136.98	-5,145.6	528.6	5,170.5	0.00	0.00	0.00
12,300.0	90.19	180.21	7,001.2	-2,136.65	-5,245.6	528.2	5,270.2	0.00	0.00	0.00
12,400.0	90.19	180.21	7,000.8	-2,136.32	-5,345.6	527.9	5,369.9	0.00	0.00	0.00
12,500.0	90.19	180.21	7,000.5	-2,135.99	-5,445.6	527.5	5,469.6	0.00	0.00	0.00
12,600.0	90.19	180.21	7,000.2	-2,135.67	-5,545.6	527.1	5,569.3	0.00	0.00	0.00
12,700.0	90.19	180.21	6,999.8	-2,135.34	-5,645.6	526.8	5,669.0	0.00	0.00	0.00
12,800.0	90.19	180.21	6,999.5	-2,135.01	-5,745.6	526.4	5,768.7	0.00	0.00	0.00
12,900.0	90.19	180.21	6,999.2	-2,134.68	-5,845.6	526.1	5,868.4	0.00	0.00	0.00
13,000.0	90.19	180.21	6,998.8	-2,134.35	-5,945.6	525.7	5,968.1	0.00	0.00	0.00
13,100.0	90.19	180.20	6,998.5	-2,134.02	-6,045.6	525.3	6,067.8	0.00	0.00	0.00
13,200.0	90.19	180.20	6,998.2	-2,133.69	-6,145.6	525.0	6,167.5	0.00	0.00	0.00
13,300.0	90.19	180.20	6,997.9	-2,133.36	-6,245.6	524.6	6,267.2	0.00	0.00	0.00
13,400.0	90.19	180.20	6,997.5	-2,133.03	-6,345.6	524.3	6,366.9	0.00	0.00	0.00
13,500.0	90.19	180.20	6,997.2	-2,132.70	-6,445.6	523.9	6,466.7	0.00	0.00	0.00
13,600.0	90.19	180.20	6,996.9	-2,132.37	-6,545.6	523.6	6,566.4	0.00	0.00	0.00

Planning Report



Database:	EDM 5000.1 Single User Db	Local Co-ordinate Reference:	Well HONEBEIN 7K-323
Company:	PDC ENERGY	TVD Reference:	KB-EST @ 4864.5usft (Original Well Elev)
Project:	WELD COUNTY, COLORADO	MD Reference:	KB-EST @ 4864.5usft (Original Well Elev)
Site:	NE SW SEC. 7 T4N R64W 6th P.M.	North Reference:	True
Well:	HONEBEIN 7K-323	Survey Calculation Method:	Minimum Curvature
Wellbore:	ORIGINAL WELLBORE		
Design:	PROPOSAL #2		

Planned Survey										
MD (usft)	Inc (°)	Azi (°)	TVD (usft)	SS (usft)	+N/-S (usft)	+E/-W (usft)	Vertical Section (usft)	Dogleg Rate (°/100usft)	Build Rate (°/100usft)	Turn Rate (°/100usft)
13,700.0	90.19	180.20	6,996.5	-2,132.04	-6,645.6	523.2	6,666.1	0.00	0.00	0.00
13,800.0	90.19	180.20	6,996.2	-2,131.70	-6,745.6	522.8	6,765.8	0.00	0.00	0.00
13,900.0	90.19	180.20	6,995.9	-2,131.37	-6,845.6	522.5	6,865.5	0.00	0.00	0.00
14,000.0	90.19	180.20	6,995.5	-2,131.04	-6,945.6	522.1	6,965.2	0.00	0.00	0.00
14,100.0	90.19	180.20	6,995.2	-2,130.71	-7,045.6	521.8	7,064.9	0.00	0.00	0.00
BHL - HONEBEIN 7K-323 (P2)										
14,162.0	90.19	180.20	6,995.0	-2,130.50	-7,107.6	521.6	7,126.7	0.00	0.00	0.00

Formations						
MD (usft)	TVD (usft)	Name	Lithology	Dip (°)	Dip Direction (°)	
3,772.2	3,722.5	PARKMAN		0.00		
4,508.9	4,448.5	SUSSEX		0.00		
5,299.0	5,238.5	SHANNON		0.00		
6,752.2	6,672.5	SHARON SPRINGS		0.00		
6,983.5	6,847.5	NIOBRARA A		0.00		
7,114.7	6,922.5	NIOBRARA B		0.00		
7,299.6	6,992.5	NIOBRARA C		0.00		

Plan Annotations				
MD (usft)	TVD (usft)	Local Coordinates		Comment
		+N/-S (usft)	+E/-W (usft)	
1,100.0	1,100.0	0.0	0.0	START NUDGE (2°/100ft BUR)
1,700.0	1,695.6	28.8	55.6	EOB TO 12° INC
4,068.9	4,012.8	255.8	492.7	END OF TANGENT
4,668.9	4,608.4	284.6	548.3	EOD TO VERTICAL
6,360.9	6,300.4	284.6	548.3	KOP (8°/100ft BUR)
7,488.2	7,016.6	-433.9	545.7	7" ICP *NEW* - HONEBEIN 7K-323 (P2)
14,162.0	6,995.0	-7,107.6	521.6	BHL - HONEBEIN 7K-323 (P2)