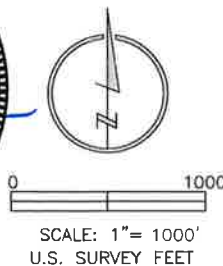


### LAND SURVEYOR'S CERTIFICATION

LAMP, RYNEARSON & ASSOCIATES, INC., OF FT. COLLINS, COLORADO HAS, IN ACCORDANCE WITH A REQUEST FROM DUSTIN DYK FOR EXTRACTION OIL AND GAS, DETERMINED THE SURFACE LOCATION OF THE WELL DESIGNATED AS MT-GLENFAIR 5-8-7 TO BE 1164' FROM THE NORTH LINE AND 1755' FROM THE WEST LINE OF SECTION 9 TOWNSHIP 5 NORTH, RANGE 65 WEST OF THE 6TH P.M., WELD COUNTY, COLORADO.

**FRANK A. KOHL**  
COLORADO PLS 37067  
DATE OF SURVEY: 3/15/2012 (SECTION CONTROL)  
DATE OF SURVEY: 7/09/2014 (WELL LOCATION)

**COLORADO LICENSED**  
**FRANK A. KOHL**  
**37067**  
**3/27/2015**  
**PROFESSIONAL LAND SURVEYOR**

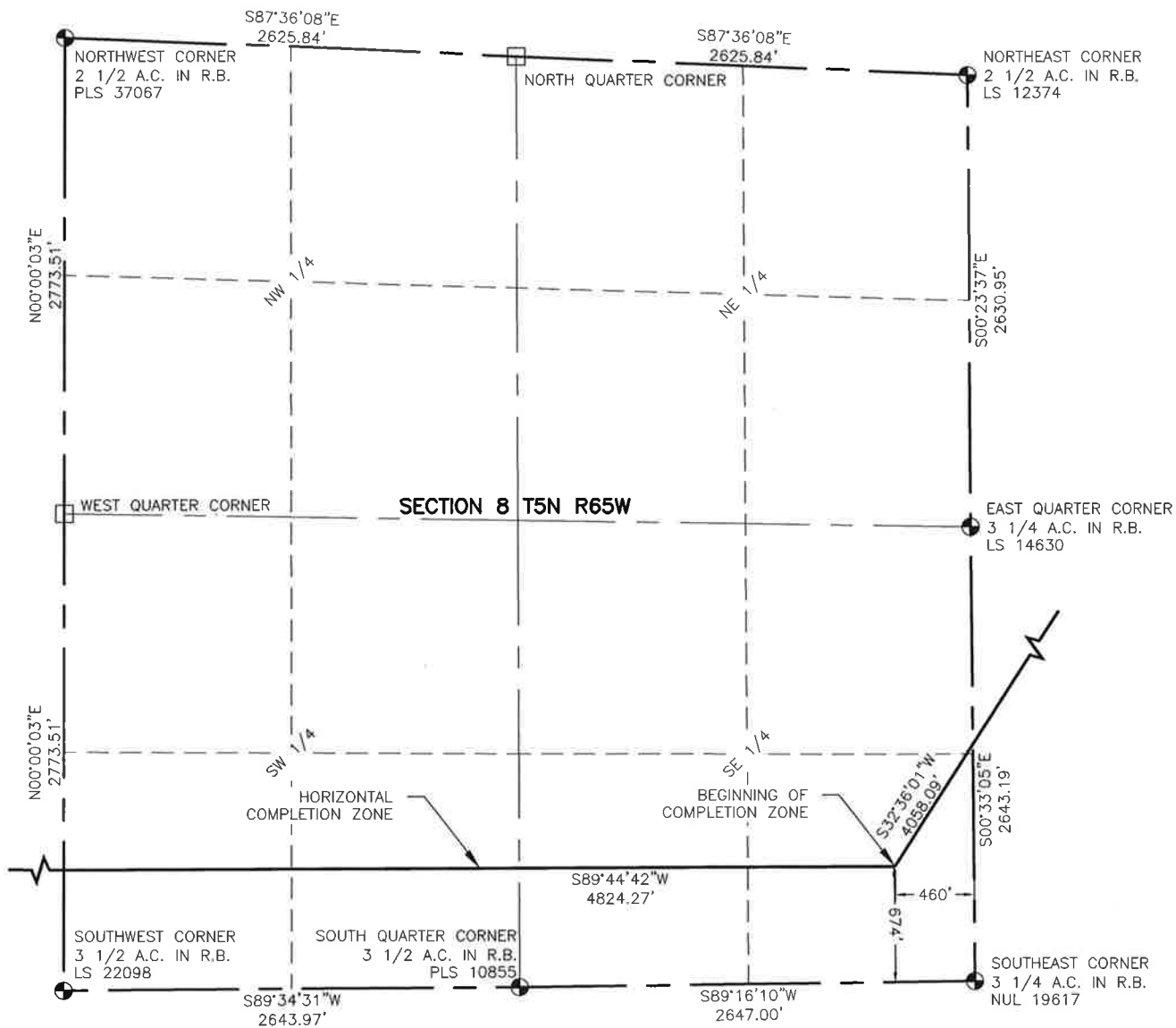


**LAMP RYNEARSON**  
**& ASSOCIATES**

4715 Innovation Drive 970.226.0342 | P  
Fort Collins, CO 80525 970.226.0879 | F  
www.LRA-Inc.com

Proposed Well Location Exhibit  
MT-GLENFAIR 5-8-7  
1 OF 3

drawn by JPM	date 3/26/15	cogcc id	project - task number 0210035.00-502	book and page MR01/MR02	surface - location NE/4,NW/4, SEC 9 T5N R65W
path/filename P:\_Engineering\0210035 MRI Midtown\DRAWINGS\EXHIBITS\0210035EXWP-00G0.dwg					



#### NOTES:

1. DISTANCES ARE MEASURED PERPENDICULAR TO NEAREST SECTION LINE AND ARE SHOWN ON THE SAME SIDE OF THE SECTION LINE WHERE THE WELL IS LOCATED.
2. THIS MAP DOES NOT REPRESENT A MONUMENTED BOUNDARY SURVEY. SIXTEENTH CORNER LOCATIONS ARE COMPUTED, UNLESS OTHERWISE NOTED.
3. BOTTOM HOLE LOCATIONS AND HORIZONTAL COMPLETION ZONE PROVIDED BY OTHERS.



0 1000

SCALE: 1" = 1000'  
U.S. SURVEY FEET

#### LEGEND

- COMPUTED ALIQUOT CORNER FROM GLO RECORDS
- ALUMINUM CAP
- RANGE BOX
- ALIQUOT CORNER
- BOTTOM HOLE
- PROPOSED WELL
- COMPUTED ALIQUOT CORNER LOCATION



**LAMP RYNEARSON  
& ASSOCIATES**

4715 Innovation Drive 970.226.0342 | P  
Fort Collins, CO 80525 970.226.0879 | F  
www.LRA-Inc.com

Proposed Well Location Exhibit  
MT-GLENFAIR 5-8-7  
2 OF 3

drawn by

JPM

date

3/26/15

cogcc id

project - task number

0210035.00-502

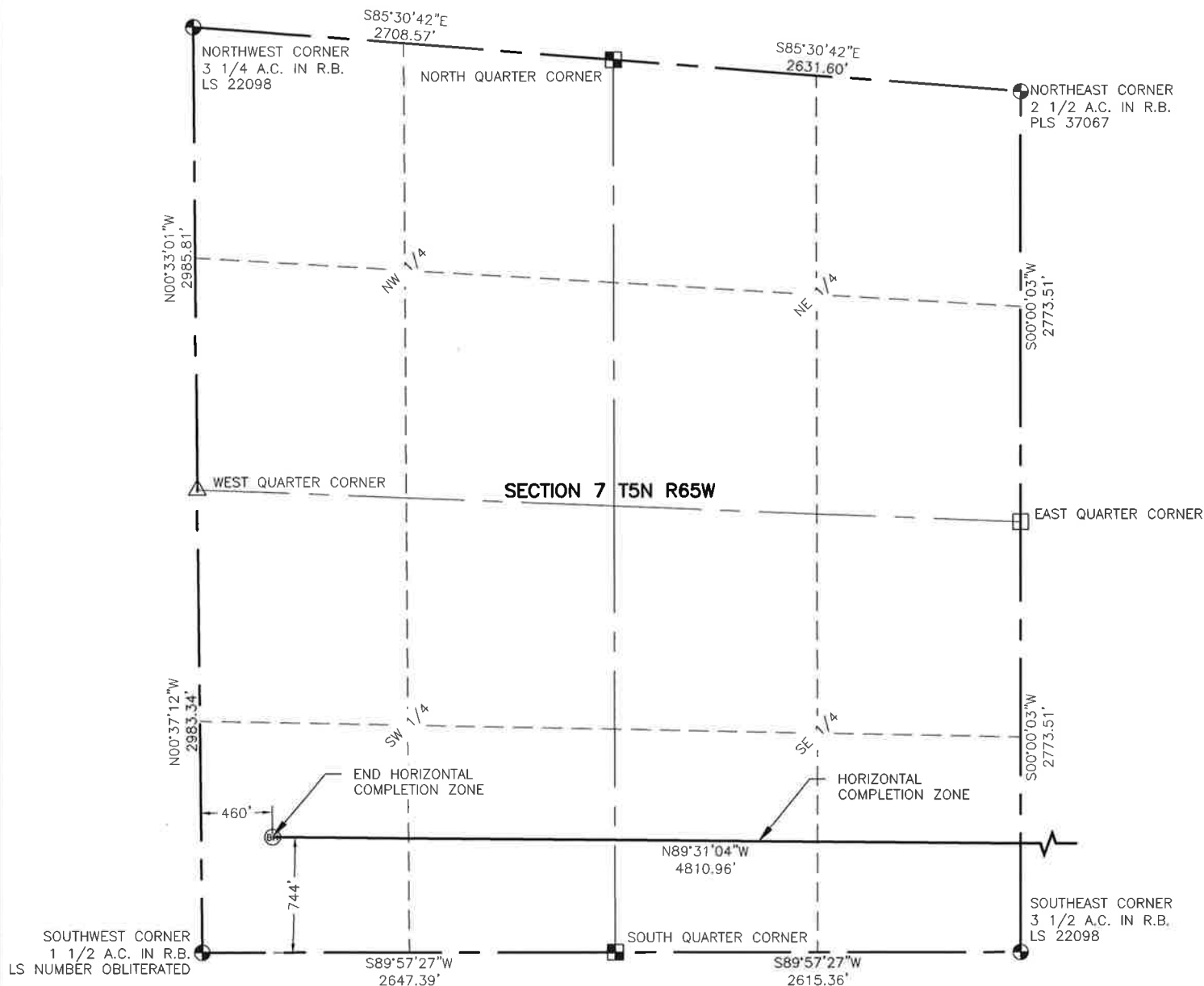
book and page

MR01/MR02

surface - location

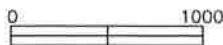
NE/4,NW/4, SEC 9 T5N R65W

path\filename P:\\_Engineering\0210035 MRI Midtown\DRAWINGS\EXHIBITS\0210035EXWP-00G1.dwg



#### NOTES:

1. DISTANCES ARE MEASURED PERPENDICULAR TO NEAREST SECTION LINE AND ARE SHOWN ON THE SAME SIDE OF THE SECTION LINE WHERE THE WELL IS LOCATED.
2. THIS MAP DOES NOT REPRESENT A MONUMENTED BOUNDARY SURVEY. SIXTEENTH CORNER LOCATIONS ARE COMPUTED, UNLESS OTHERWISE NOTED.
3. BOTTOM HOLE LOCATIONS AND HORIZONTAL COMPLETION ZONE PROVIDED BY OTHERS.



SCALE: 1" = 1000'  
U.S. SURVEY FEET

#### LEGEND

- |   |   |      |                                  |
|---|---|------|----------------------------------|
| ⊙ | ALIQUOT CORNER                                    | □    | COMPUTED ALIQUOT CORNER LOCATION |
| ⊙ | BOTTOM HOLE                                       | A.C. | ALUMINUM CAP                     |
| ⊙ | COMPUTED ALIQUOT CORNER FROM GLO RECORDS          | R.B. | RANGE BOX                        |
| ⊙ | COMPUTED ALIQUOT CORNER FROM MONUMENT ACCESSORIES |      |                                  |



**LAMP RYNEARSON  
& ASSOCIATES**

4715 Innovation Drive 970.226.0342 | P  
Fort Collins, CO 80525 970.226.0879 | F  
www.LRA-Inc.com

Proposed Well Location Exhibit  
MT-GLENFAIR 5-8-7  
3 OF 3

drawn by

JPM

date

3/26/15

cogcc id

project - task number

0210035.00-502

book and page

MR01/MR02

surface - location

NE/4,NW/4, SEC 9 T5N R65W

path\filename P:\\_Engineering\0210035 MRI Midtown\DRAWINGS\EXHIBITS\0210035EXWP-00G2.dwg