

Lynch 34-6-18 #1

Proposed WBD

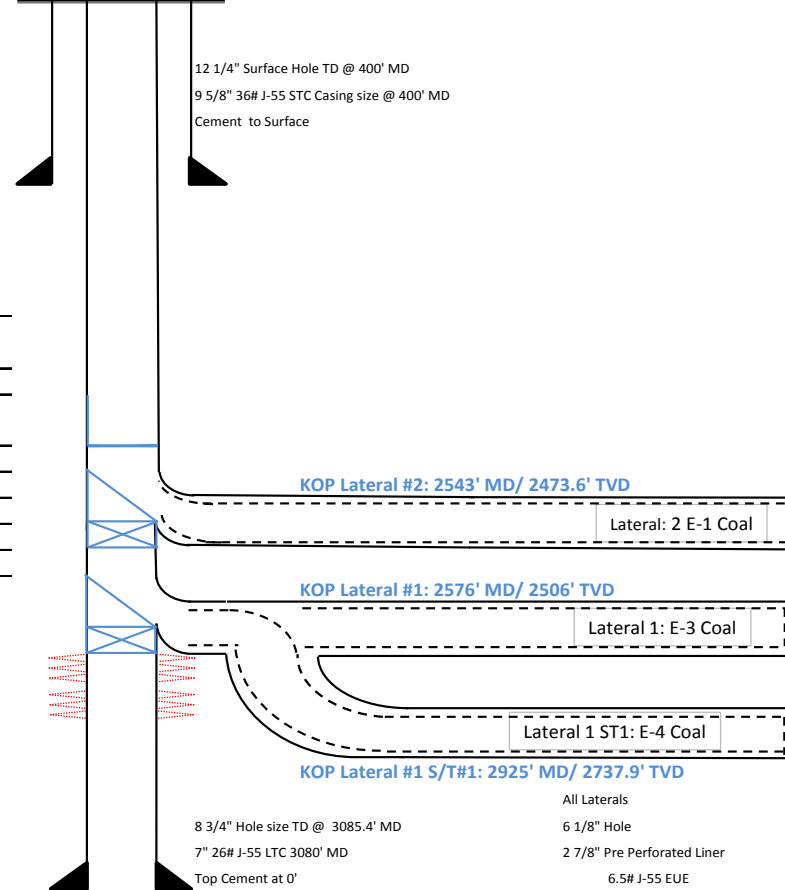
DRAWING NOT TO SCALE

State: Colorado
County: La Plata
API: 05-067-09920
GL: 6858
KB: 6874

12 1/4" Surface Hole TD @ 400' MD
9 5/8" 36# J-55 STC Casing size @ 400' MD
Cement to Surface

Estimated Fm. Tops (from OH Logs)

	MD	TVD
Animas	1564.3	1563
Kirtland Sh.	1958.2	1911
Farmington SS.	2220.7	2161
L. Kirtland Shale	2504.7	2436
Fruitland Fm.	2750	2822
E1 Coal	2768.2	2696
E2 Coal	2781.3	2709
E3 Coal	2820.5	2748
E4 Coal	2834.6	2762
Pictured Cliffs	2884.9	2812



All Laterals
6 1/8" Hole
2 7/8" Pre Perforated Liner
6.5# J-55 EUE

				Top of Production Section 18-T34N-R6W		Total Depth								
Well/Lateral Name	Planned Drill Order	KOP (MD)	KOP (TVD)	FNL (FT)	FWL (FT)	TD (MD)	TD (TVD)	Liner Bottom	Liner Top	Proposed API Extension	COGCC Form 2 E-Form Doc #	Proposed BHL Section 18-T34N-R6W	Notes	
Pilot Hole		500	500	1977	692	3085.4	3012.0	N/A	N/A	0000	400631155	1979' FNL & 724' FWL		
Lateral #1	1	2576.0	2506.0	1976.0	871.0	6501.9	2685.0	6496.9	3025	0100	400868240	1951' FNL & 681' FEL		
Lateral #1 St #1	2	2925.0	2737.9	Same as Lat #1		6503.2	2707.0	6498.2	2586.0	0200	400868289	1951' FNL & 681' FEL	Lateral #1 ST#1 is an open hole sidetrack off of Lateral #1	
Lateral #2	3	2543.0	2473.6	1976.0	851.0	6747.3	2600.0	6742.3	2553.0	0300	400870197	1951' FNL & 681' FEL		