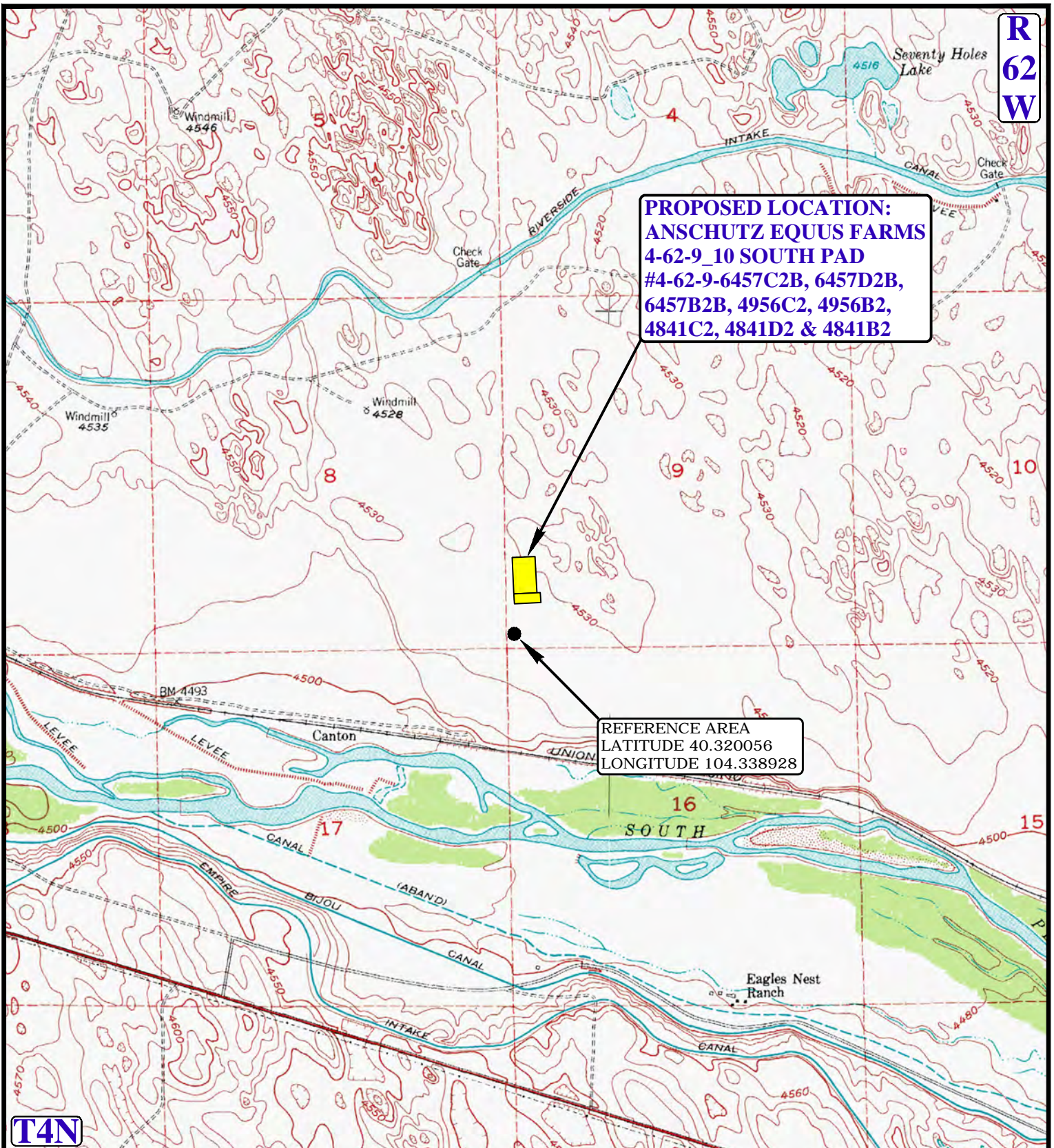


R
62
W



PROPOSED LOCATION:
ANSCHUTZ EQUUS FARMS
4-62-9_10 SOUTH PAD
#4-62-9-6457C2B, 6457D2B,
6457B2B, 4956C2, 4956B2,
4841C2, 4841D2 & 4841B2

REFERENCE AREA
LATITUDE 40.320056
LONGITUDE 104.338928

T4N

LEGEND:

BILL BARRETT CORPORATION

ANSCHUTZ EQUUS FARMS 4-62-9_10 SOUTH PAD
#4-62-9-6457C2B, 6457D2B, 6457B2B, 4956C2, 4956B2,
4841C2, 4841D2 & 4841B2
SW 1/4 SW 1/4 SECTION 9, T4N, R62W, 6th P.M.
WELD COUNTY, COLORADO



UELS, LLC
Corporate Office * 85 South 200 East
Vernal, UT 84078 * (435) 789-1017

DRAWN BY: J.L.G.

DATE DRAWN: 10-06-14

SCALE: 1" = 2000'

REV: 03-26-15

REFERENCE AREA MAP

REF TOPO