

LEGEND:

PROPOSED LOCATION

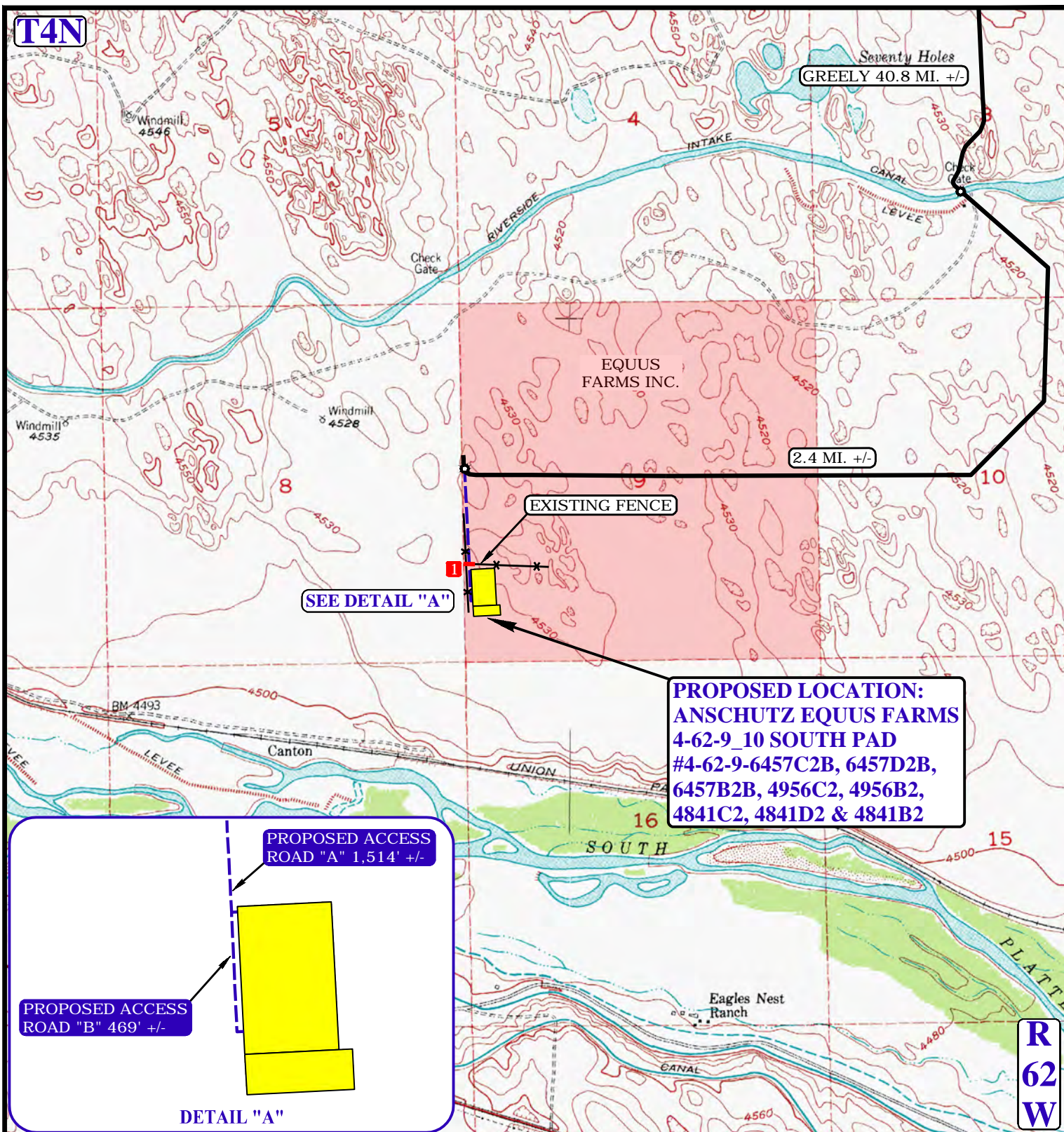
BILL BARRETT CORPORATION

ANSCHUTZ EQUUS FARMS 4-62-9_10 SOUTH PAD
 #4-62-9-6457C2B, 6457D2B, 6457B2B, 4956C2, 4956B2,
 4841C2, 4841D2 & 4841B2
 SW 1/4 SW 1/4 SECTION 9, T4N, R62W, 6th P.M.
 WELD COUNTY, COLORADO



UELS, LLC
 Corporate Office * 85 South 200 East
 Vernal, UT 84078 * (435) 789-1017

DRAWN BY: J.L.G.	DATE DRAWN: 10-06-14
SCALE: 1:100,000	REV: 03-26-15
ACCESS ROAD MAP	TOPO A



NOTE: PARCEL DATA SHOWN HAS BEEN OBTAINED FROM VARIOUS SOURCES AND SHOULD BE USED FOR MAPPING, GRAPHIC AND PLANNING PURPOSES ONLY. NO WARRANTY IS MADE BY UINTAH ENGINEERING AND LAND SURVEYING (UELS) FOR ACCURACY OF THE PARCEL DATA.

LEGEND:

- EXISTING ROAD
- - - PROPOSED ROAD
- * - EXISTING FENCE
- 1** CATTLE GUARD REQUIRED

BILL BARRETT CORPORATION

ANSCHUTZ EQUUS FARMS 4-62-9_10 SOUTH PAD
#4-62-9-6457C2B, 6457D2B, 6457B2B, 4956C2, 4956B2,
4841C2, 4841D2 & 4841B2
SW 1/4 SW 1/4 SECTION 9, T4N, R62W, 6th P.M.
WELD COUNTY, COLORADO

DRAWN BY: J.L.G.

DATE DRAWN: 10-06-14

SCALE: 1"=2000'

REV: 05-13-15

ACCESS ROAD MAP

TOPO B



UELS, LLC
Corporate Office * 85 South 200 East
Vernal, UT 84078 * (435) 789-1017



PROCEED IN AN EASTERLY, THEN SOUTHEASTERLY DIRECTION FROM GREELEY, COLORADO ALONG HIGHWAY 34 APPROXIMATELY 25.4 MILES TO THE JUNCTION OF THIS ROAD AND COUNTY ROAD 87 TO THE NORTH; TURN LEFT AND PROCEED IN A NORTHERLY, THEN EASTERLY DIRECTION APPROXIMATELY 3.0 MILES TO THE JUNCTION OF THIS ROAD AND COUNTY ROAD 89 TO THE NORTH; TURN LEFT AND PROCEED IN A NORTHERLY DIRECTION APPROXIMATELY 4.7 MILES TO JUNCTION OF THIS ROAD AND AN EXISTING ROAD TO THE WEST; TURN LEFT AND PROCEED IN A WESTERLY, THEN SOUTHWESTERLY DIRECTION APPROXIMATELY 4.1 MILES TO THE JUNCTION OF THIS ROAD AND AN EXISTING ROAD TO THE SOUTH; TURN LEFT AND PROCEED IN A SOUTHERLY DIRECTION APPROXIMATELY 2.2 MILES TO THE JUNCTION OF THIS ROAD AND AN EXISTING ROAD TO THE WEST; TURN RIGHT AND PROCEED IN A WESTERLY, THEN SOUTHERLY DIRECTION APPROXIMATELY 1.4 MILES TO AN EXISTING BRIDGE; CONTINUE IN A SOUTHEASTERLY, THEN SOUTHWESTERLY, THEN WESTERLY DIRECTION APPROXIMATELY 2.4 MILES TO THE BEGINNING OF THE PROPOSED ACCESS ROAD TO THE SOUTH; FOLLOW ROAD FLAGS IN A SOUTHERLY DIRECTION APPROXIMATELY 1,514' TO THE PROPOSED LOCATION.

TOTAL DISTANCE FROM GREELEY, COLORADO TO THE PROPOSED LOCATION IS APPROXIMATELY 43.5 MILES.

BILL BARRETT CORPORATION

ANSCHUTZ EQUUS FARMS 4-62-9_10 SOUTH PAD
#4-62-9-6457C2B, 6457D2B, 6457B2B, 4956C2, 4956B2,
4841C2, 4841D2 & 4841B2
SW 1/4 SW 1/4 SECTION 9, T4N, R62W, 6th P.M.
WELD COUNTY, COLORADO



UELS, LLC
Corporate Office * 85 South 200 East
Vernal, UT 84078 * (435) 789-1017

DRAWN BY: J.L.G.

DATE DRAWN: 10-06-14

REV: 03-26-15

ROAD DESCRIPTION