



**Bill Barrett Corporation**

## **Bill Barrett Corp.**

**Weld Co., CO**

**Sec.9-T4N-R62W**

**Anschutz Eq Farms 4-62-9-3225C2**

**Wellbore #1**

**Plan: Design #1**

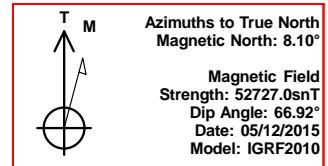
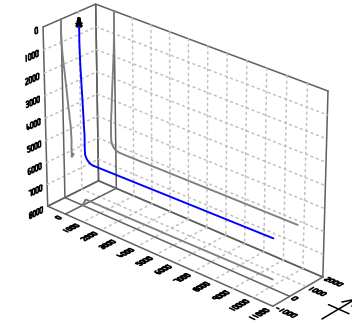
## **Standard Planning Report**

**12 May, 2015**



Bill Barrett Corp.  
Project: Weld Co., CO  
Site: Sec.9-T4N-R62W  
Well: Anschutz Eq Farms 4-62-9-3225C2  
Wellbore: Wellbore #1  
Design: Design #1  
Lat: 40° 19' 33.082 N  
Long: 104° 20' 18.668 W  
Pad GL: 4528.00  
KB: Well @ 4544.00usft

# Archer



## SECTION DETAILS

MD	Inc	Azi	TVD	+N/-S	+E/-W	Dleg	TFace	VSec	Annotation
0.00	0.00	0.00	0.00	0.00	0.00	0.00	0.00	0.00	
900.00	0.00	0.00	900.00	0.00	0.00	0.00	0.00	0.00	Start Build 2.00
1260.36	7.21	330.87	1259.41	19.77	-11.02	2.00	330.87	-10.81	Start 3719.10 hold at 1260.36 MD
4979.46	7.21	330.87	4949.13	427.36	-238.13	0.00	0.00	-233.57	Start Drop -2.00
5339.82	0.00	0.00	5308.54	447.13	-249.15	2.00	180.00	-244.38	Start 500.03 hold at 5339.82 MD
5839.85	0.00	0.00	5808.57	447.13	-249.15	0.00	0.00	-244.38	Start Build 12.00
6594.91	90.61	89.39	6286.01	452.24	233.34	12.00	89.39	238.14	Start 9449.91 hold at 6594.91 MD
16044.82	90.61	89.39	6186.00	552.34	9682.19	0.00	0.00	9687.52	TD at 16044.82

## WELL DETAILS: Anschutz Eq Farms 4-62-9-3225C2

+N/-S	+E/-W	Northing	Ground Level: Easting	4528.00 Latitude	Longitude	Slot
0.00	0.00	1363670.990	3323829.013	40° 19' 33.082 N	104° 20' 18.668 W	

## PROJECT DETAILS: Weld Co., CO

Geodetic System: US State Plane 1983  
Datum: North American Datum 1983  
Ellipsoid: GRS 1980  
Zone: Colorado Northern Zone

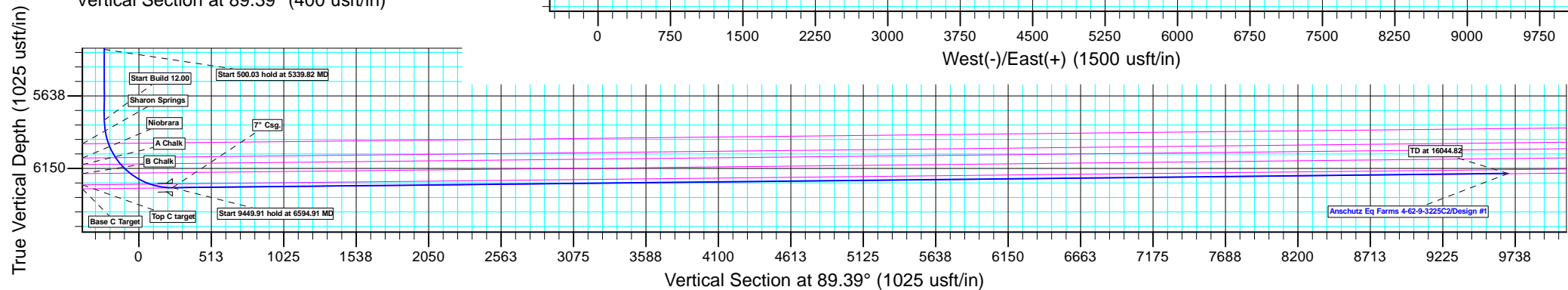
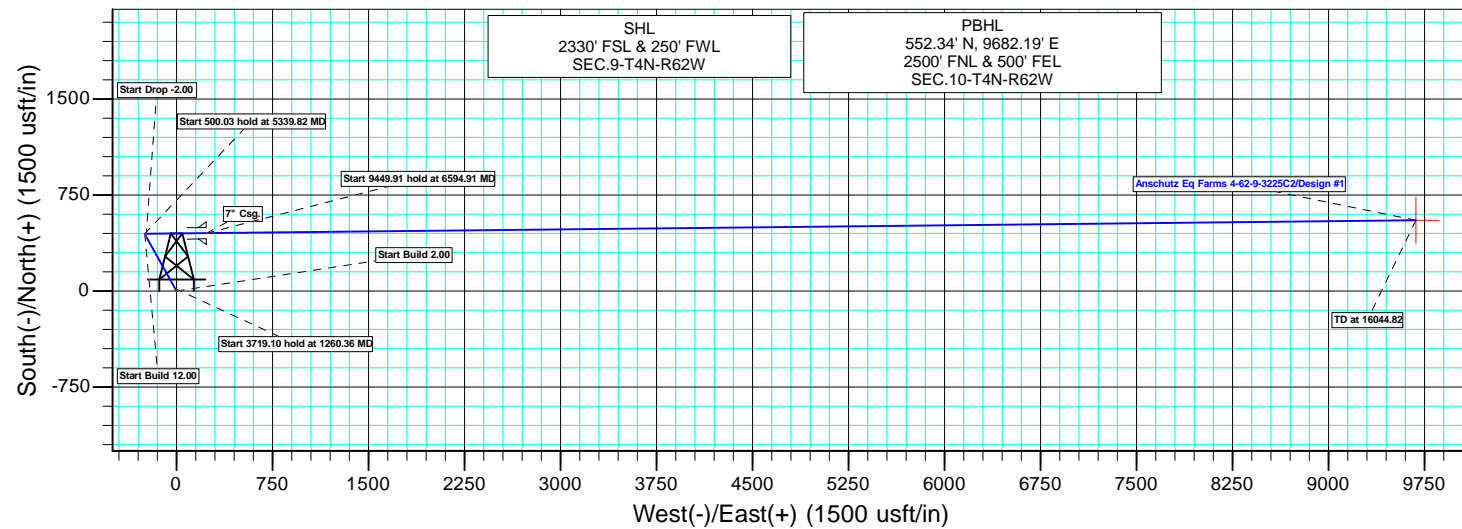
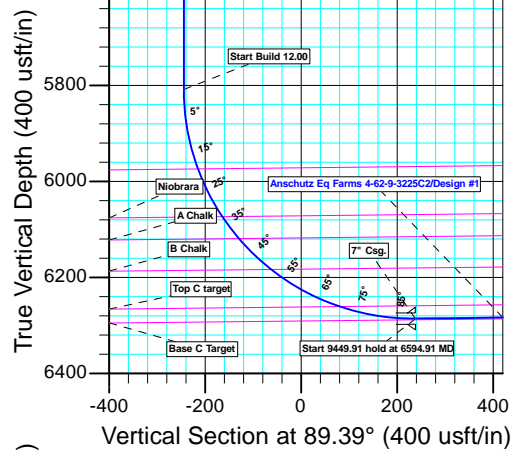
System Datum: Mean Sea Level

## CASING DETAILS

TVD	MD	Name
6286.01	6594.91	7" Csg.

## WELLBORE TARGET DETAILS (LAT/LONG)

Name	TVD	+N/-S	+E/-W	Latitude	Longitude	Shape Point
Anschutz Eq Farms 4-62-9-3225C2 tgt	6186.00	552.34	9682.19	40° 19' 38.521 N	104° 18' 13.651 W	



Plan: Design #1 (Anschutz Eq Farms 4-62-9-3225C2/Wellbore #1)

Created By: Ricky Osburn Date: 14:36, May 12 2015

<b>Database:</b>	EDMDBBW	<b>Local Co-ordinate Reference:</b>	Well Anschutz Eq Farms 4-62-9-3225C2
<b>Company:</b>	Bill Barrett Corp.	<b>TVD Reference:</b>	Well @ 4544.00usft
<b>Project:</b>	Weld Co., CO	<b>MD Reference:</b>	Well @ 4544.00usft
<b>Site:</b>	Sec.9-T4N-R62W	<b>North Reference:</b>	True
<b>Well:</b>	Anschutz Eq Farms 4-62-9-3225C2	<b>Survey Calculation Method:</b>	Minimum Curvature
<b>Wellbore:</b>	Wellbore #1		
<b>Design:</b>	Design #1		

<b>Project</b>	Weld Co., CO		
<b>Map System:</b>	US State Plane 1983	<b>System Datum:</b>	Mean Sea Level
<b>Geo Datum:</b>	North American Datum 1983		
<b>Map Zone:</b>	Colorado Northern Zone		

Site		Sec.9-T4N-R62W			
Site Position:		Northing:	1,361,884.480 usft	Latitude:	40° 19' 15.341 N
From:	Lat/Long	Easting:	3,324,505.224 usft	Longitude:	104° 20' 10.241 W
Position Uncertainty:	0.00 usft	Slot Radius:	13-3/16 "	Grid Convergence:	0.75 °

Well	Anschutz Eq Farms 4-62-9-3225C2					
Well Position	+N/-S	1,795.23 usft	Northing:	1,363,670.990 usft	Latitude:	40° 19' 33.082 N
	+E/-W	-652.71 usft	Easting:	3,323,829.013 usft	Longitude:	104° 20' 18.668 W
Position Uncertainty		0.00 usft	Wellhead Elevation:	0.00 usft	Ground Level:	4,528.00 usft

<b>Wellbore</b>	Wellbore #1				
<b>Magnetics</b>	<b>Model Name</b>	<b>Sample Date</b>	<b>Declination (°)</b>	<b>Dip Angle (°)</b>	<b>Field Strength (nT)</b>
	IGRF2010	2015/05/12	8.10	66.92	52,727

<b>Design</b>	Design #1			
<b>Audit Notes:</b>				
<b>Version:</b>	<b>Phase:</b>	PLAN	<b>Tie On Depth:</b>	0.00
<b>Vertical Section:</b>	<b>Depth From (TVD) (usft)</b>	<b>+N/-S (usft)</b>	<b>+E/-W (usft)</b>	<b>Direction (°)</b>
	0.00	0.00	0.00	89.39

<b>Plan Sections</b>										
Measured Depth (usft)	Inclination (°)	Azimuth (°)	Vertical Depth (usft)	+N/-S (usft)	+E/-W (usft)	Dogleg Rate (°/100usft)	Build Rate (°/100usft)	Turn Rate (°/100usft)	TFO (°)	Target
0.00	0.00	0.00	0.00	0.00	0.00	0.00	0.00	0.00	0.00	
900.00	0.00	0.00	900.00	0.00	0.00	0.00	0.00	0.00	0.00	
1,260.36	7.21	330.87	1,259.41	19.77	-11.02	2.00	2.00	0.00	330.87	
4,979.46	7.21	330.87	4,949.13	427.36	-238.13	0.00	0.00	0.00	0.00	
5,339.82	0.00	0.00	5,308.54	447.13	-249.15	2.00	-2.00	0.00	180.00	
5,839.85	0.00	0.00	5,808.57	447.13	-249.15	0.00	0.00	0.00	0.00	
6,594.91	90.61	89.39	6,286.01	452.24	233.34	12.00	12.00	0.00	89.39	Anschutz Eq Farms 4
16,044.82	90.61	89.39	6,186.00	552.34	9,682.19	0.00	0.00	0.00	0.00	Anschutz Eq Farms 4

<b>Database:</b>	EDMDBBW	<b>Local Co-ordinate Reference:</b>	Well Anschutz Eq Farms 4-62-9-3225C2
<b>Company:</b>	Bill Barrett Corp.	<b>TVD Reference:</b>	Well @ 4544.00usft
<b>Project:</b>	Weld Co., CO	<b>MD Reference:</b>	Well @ 4544.00usft
<b>Site:</b>	Sec.9-T4N-R62W	<b>North Reference:</b>	True
<b>Well:</b>	Anschutz Eq Farms 4-62-9-3225C2	<b>Survey Calculation Method:</b>	Minimum Curvature
<b>Wellbore:</b>	Wellbore #1		
<b>Design:</b>	Design #1		

Planned Survey									
Measured Depth (usft)	Inclination (°)	Azimuth (°)	Vertical Depth (usft)	+N/-S (usft)	+E/-W (usft)	Vertical Section (usft)	Dogleg Rate (°/100usft)	Build Rate (°/100usft)	Turn Rate (°/100usft)
0.00	0.00	0.00	0.00	0.00	0.00	0.00	0.00	0.00	0.00
100.00	0.00	0.00	100.00	0.00	0.00	0.00	0.00	0.00	0.00
200.00	0.00	0.00	200.00	0.00	0.00	0.00	0.00	0.00	0.00
300.00	0.00	0.00	300.00	0.00	0.00	0.00	0.00	0.00	0.00
400.00	0.00	0.00	400.00	0.00	0.00	0.00	0.00	0.00	0.00
500.00	0.00	0.00	500.00	0.00	0.00	0.00	0.00	0.00	0.00
600.00	0.00	0.00	600.00	0.00	0.00	0.00	0.00	0.00	0.00
700.00	0.00	0.00	700.00	0.00	0.00	0.00	0.00	0.00	0.00
800.00	0.00	0.00	800.00	0.00	0.00	0.00	0.00	0.00	0.00
<b>Start Build 2.00</b>									
900.00	0.00	0.00	900.00	0.00	0.00	0.00	0.00	0.00	0.00
1,000.00	2.00	330.87	999.98	1.52	-0.85	-0.83	2.00	2.00	0.00
1,100.00	4.00	330.87	1,099.84	6.10	-3.40	-3.33	2.00	2.00	0.00
1,200.00	6.00	330.87	1,199.45	13.71	-7.64	-7.49	2.00	2.00	0.00
<b>Start 3719.10 hold at 1260.36 MD</b>									
1,260.36	7.21	330.87	1,259.41	19.77	-11.02	-10.81	2.00	2.00	0.00
1,300.00	7.21	330.87	1,298.74	24.12	-13.44	-13.18	0.00	0.00	0.00
1,400.00	7.21	330.87	1,397.95	35.08	-19.55	-19.17	0.00	0.00	0.00
1,500.00	7.21	330.87	1,497.16	46.04	-25.65	-25.16	0.00	0.00	0.00
1,600.00	7.21	330.87	1,596.37	56.99	-31.76	-31.15	0.00	0.00	0.00
1,700.00	7.21	330.87	1,695.58	67.95	-37.87	-37.14	0.00	0.00	0.00
1,800.00	7.21	330.87	1,794.79	78.91	-43.97	-43.13	0.00	0.00	0.00
1,900.00	7.21	330.87	1,894.00	89.87	-50.08	-49.12	0.00	0.00	0.00
2,000.00	7.21	330.87	1,993.21	100.83	-56.19	-55.11	0.00	0.00	0.00
2,100.00	7.21	330.87	2,092.42	111.79	-62.29	-61.10	0.00	0.00	0.00
2,200.00	7.21	330.87	2,191.63	122.75	-68.40	-67.09	0.00	0.00	0.00
2,300.00	7.21	330.87	2,290.84	133.71	-74.51	-73.08	0.00	0.00	0.00
2,400.00	7.21	330.87	2,390.05	144.67	-80.61	-79.07	0.00	0.00	0.00
2,500.00	7.21	330.87	2,489.26	155.63	-86.72	-85.06	0.00	0.00	0.00
2,600.00	7.21	330.87	2,588.47	166.59	-92.83	-91.05	0.00	0.00	0.00
2,700.00	7.21	330.87	2,687.68	177.55	-98.93	-97.04	0.00	0.00	0.00
2,800.00	7.21	330.87	2,786.89	188.51	-105.04	-103.03	0.00	0.00	0.00
2,900.00	7.21	330.87	2,886.10	199.46	-111.15	-109.02	0.00	0.00	0.00
3,000.00	7.21	330.87	2,985.31	210.42	-117.25	-115.01	0.00	0.00	0.00
3,100.00	7.21	330.87	3,084.52	221.38	-123.36	-121.00	0.00	0.00	0.00
3,200.00	7.21	330.87	3,183.73	232.34	-129.47	-126.98	0.00	0.00	0.00
3,300.00	7.21	330.87	3,282.94	243.30	-135.57	-132.97	0.00	0.00	0.00
3,400.00	7.21	330.87	3,382.15	254.26	-141.68	-138.96	0.00	0.00	0.00
3,500.00	7.21	330.87	3,481.35	265.22	-147.79	-144.95	0.00	0.00	0.00
3,600.00	7.21	330.87	3,580.56	276.18	-153.89	-150.94	0.00	0.00	0.00
3,700.00	7.21	330.87	3,679.77	287.14	-160.00	-156.93	0.00	0.00	0.00
3,800.00	7.21	330.87	3,778.98	298.10	-166.11	-162.92	0.00	0.00	0.00
3,900.00	7.21	330.87	3,878.19	309.06	-172.21	-168.91	0.00	0.00	0.00
4,000.00	7.21	330.87	3,977.40	320.02	-178.32	-174.90	0.00	0.00	0.00
4,100.00	7.21	330.87	4,076.61	330.98	-184.43	-180.89	0.00	0.00	0.00
4,200.00	7.21	330.87	4,175.82	341.93	-190.53	-186.88	0.00	0.00	0.00
4,300.00	7.21	330.87	4,275.03	352.89	-196.64	-192.87	0.00	0.00	0.00
4,400.00	7.21	330.87	4,374.24	363.85	-202.75	-198.86	0.00	0.00	0.00
4,500.00	7.21	330.87	4,473.45	374.81	-208.85	-204.85	0.00	0.00	0.00
4,600.00	7.21	330.87	4,572.66	385.77	-214.96	-210.84	0.00	0.00	0.00
4,700.00	7.21	330.87	4,671.87	396.73	-221.07	-216.83	0.00	0.00	0.00
<b>Shannon</b>									
4,722.63	7.21	330.87	4,694.32	399.21	-222.45	-218.19	0.00	0.00	0.00

<b>Database:</b>	EDMDBBW	<b>Local Co-ordinate Reference:</b>	Well Anschutz Eq Farms 4-62-9-3225C2
<b>Company:</b>	Bill Barrett Corp.	<b>TVD Reference:</b>	Well @ 4544.00usft
<b>Project:</b>	Weld Co., CO	<b>MD Reference:</b>	Well @ 4544.00usft
<b>Site:</b>	Sec.9-T4N-R62W	<b>North Reference:</b>	True
<b>Well:</b>	Anschutz Eq Farms 4-62-9-3225C2	<b>Survey Calculation Method:</b>	Minimum Curvature
<b>Wellbore:</b>	Wellbore #1		
<b>Design:</b>	Design #1		

Planned Survey									
Measured Depth (usft)	Inclination (°)	Azimuth (°)	Vertical Depth (usft)	+N/-S (usft)	+E/-W (usft)	Vertical Section (usft)	Dogleg Rate (°/100usft)	Build Rate (°/100usft)	Turn Rate (°/100usft)
4,800.00	7.21	330.87	4,771.08	407.69	-227.17	-222.82	0.00	0.00	0.00
4,900.00	7.21	330.87	4,870.29	418.65	-233.28	-228.81	0.00	0.00	0.00
<b>Start Drop -2.00</b>									
4,979.46	7.21	330.87	4,949.13	427.36	-238.13	-233.57	0.00	0.00	0.00
5,000.00	6.80	330.87	4,969.51	429.54	-239.35	-234.76	2.00	-2.00	0.00
5,100.00	4.80	330.87	5,069.00	438.37	-244.27	-239.59	2.00	-2.00	0.00
5,200.00	2.80	330.87	5,168.77	444.15	-247.49	-242.75	2.00	-2.00	0.00
5,300.00	0.80	330.87	5,268.72	446.89	-249.02	-244.24	2.00	-2.00	0.00
<b>Start 500.03 hold at 5339.82 MD</b>									
5,339.82	0.00	0.00	5,308.54	447.13	-249.15	-244.38	2.00	-2.00	0.00
5,400.00	0.00	0.00	5,368.72	447.13	-249.15	-244.38	0.00	0.00	0.00
5,500.00	0.00	0.00	5,468.72	447.13	-249.15	-244.38	0.00	0.00	0.00
5,600.00	0.00	0.00	5,568.72	447.13	-249.15	-244.38	0.00	0.00	0.00
5,700.00	0.00	0.00	5,668.72	447.13	-249.15	-244.38	0.00	0.00	0.00
5,800.00	0.00	0.00	5,768.72	447.13	-249.15	-244.38	0.00	0.00	0.00
<b>Start Build 12.00</b>									
5,839.85	0.00	0.00	5,808.57	447.13	-249.15	-244.38	0.00	0.00	0.00
5,850.00	1.22	89.39	5,818.72	447.13	-249.04	-244.27	12.00	12.00	0.00
5,875.00	4.22	89.39	5,843.68	447.14	-247.86	-243.08	12.00	12.00	0.00
5,900.00	7.22	89.39	5,868.56	447.17	-245.37	-240.59	12.00	12.00	0.00
5,925.00	10.22	89.39	5,893.27	447.21	-241.58	-236.80	12.00	12.00	0.00
5,950.00	13.22	89.39	5,917.74	447.26	-236.50	-231.73	12.00	12.00	0.00
5,975.00	16.22	89.39	5,941.92	447.33	-230.15	-225.38	12.00	12.00	0.00
6,000.00	19.22	89.39	5,965.73	447.41	-222.55	-217.77	12.00	12.00	0.00
<b>Sharon Springs</b>									
6,009.09	20.31	89.39	5,974.29	447.44	-219.47	-214.70	12.00	12.00	0.00
6,025.00	22.22	89.39	5,989.11	447.51	-213.70	-208.93	12.00	12.00	0.00
6,050.00	25.22	89.39	6,012.00	447.61	-203.65	-198.87	12.00	12.00	0.00
6,075.00	28.22	89.39	6,034.33	447.73	-192.41	-187.63	12.00	12.00	0.00
6,100.00	31.22	89.39	6,056.03	447.86	-180.02	-175.24	12.00	12.00	0.00
<b>Niobrara</b>									
6,121.00	33.74	89.39	6,073.75	447.98	-168.75	-163.97	12.00	12.00	0.00
6,125.00	34.22	89.39	6,077.07	448.01	-166.51	-161.73	12.00	12.00	0.00
6,150.00	37.22	89.39	6,097.36	448.16	-151.92	-147.14	12.00	12.00	0.00
6,175.00	40.22	89.39	6,116.86	448.33	-136.28	-131.50	12.00	12.00	0.00
<b>A Chalk</b>									
6,178.30	40.61	89.39	6,119.38	448.35	-134.14	-129.36	12.00	12.00	0.00
6,200.00	43.22	89.39	6,135.52	448.50	-119.65	-114.87	12.00	12.00	0.00
6,225.00	46.22	89.39	6,153.29	448.69	-102.06	-97.28	12.00	12.00	0.00
6,250.00	49.22	89.39	6,170.10	448.88	-83.57	-78.79	12.00	12.00	0.00
<b>B Chalk</b>									
6,271.32	51.78	89.39	6,183.66	449.06	-67.12	-62.34	12.00	12.00	0.00
6,275.00	52.22	89.39	6,185.93	449.09	-64.22	-59.44	12.00	12.00	0.00
6,300.00	55.22	89.39	6,200.72	449.30	-44.07	-39.29	12.00	12.00	0.00
6,325.00	58.22	89.39	6,214.44	449.52	-23.18	-18.39	12.00	12.00	0.00
6,350.00	61.22	89.39	6,227.05	449.75	-1.59	3.20	12.00	12.00	0.00
6,375.00	64.22	89.39	6,238.50	449.99	20.62	25.41	12.00	12.00	0.00
6,400.00	67.22	89.39	6,248.78	450.23	43.41	48.20	12.00	12.00	0.00
6,425.00	70.22	89.39	6,257.86	450.48	66.70	71.49	12.00	12.00	0.00
<b>Top C target</b>									
6,434.99	71.42	89.39	6,261.14	450.58	76.13	80.92	12.00	12.00	0.00
6,450.00	73.22	89.39	6,265.70	450.73	90.43	95.23	12.00	12.00	0.00
6,475.00	76.22	89.39	6,272.29	450.98	114.54	119.34	12.00	12.00	0.00

<b>Database:</b>	EDMDBBW	<b>Local Co-ordinate Reference:</b>	Well Anschutz Eq Farms 4-62-9-3225C2
<b>Company:</b>	Bill Barrett Corp.	<b>TVD Reference:</b>	Well @ 4544.00usft
<b>Project:</b>	Weld Co., CO	<b>MD Reference:</b>	Well @ 4544.00usft
<b>Site:</b>	Sec.9-T4N-R62W	<b>North Reference:</b>	True
<b>Well:</b>	Anschutz Eq Farms 4-62-9-3225C2	<b>Survey Calculation Method:</b>	Minimum Curvature
<b>Wellbore:</b>	Wellbore #1		
<b>Design:</b>	Design #1		

Planned Survey									
Measured Depth (usft)	Inclination (°)	Azimuth (°)	Vertical Depth (usft)	+N/-S (usft)	+E/-W (usft)	Vertical Section (usft)	Dogleg Rate (°/100usft)	Build Rate (°/100usft)	Turn Rate (°/100usft)
6,500.00	79.22	89.39	6,277.60	451.24	138.97	143.76	12.00	12.00	0.00
6,525.00	82.22	89.39	6,281.64	451.50	163.64	168.43	12.00	12.00	0.00
6,550.00	85.22	89.39	6,284.37	451.77	188.48	193.28	12.00	12.00	0.00
6,575.00	88.22	89.39	6,285.80	452.03	213.44	218.24	12.00	12.00	0.00
<b>Start 9449.91 hold at 6594.91 MD - 7" Csg.</b>									
6,594.91	90.61	89.39	6,286.01	452.24	233.34	238.15	12.00	12.00	0.00
6,600.00	90.61	89.39	6,285.95	452.30	238.43	243.23	0.00	0.00	0.00
6,700.00	90.61	89.39	6,284.90	453.35	338.42	343.23	0.00	0.00	0.00
6,800.00	90.61	89.39	6,283.84	454.41	438.41	443.22	0.00	0.00	0.00
6,900.00	90.61	89.39	6,282.78	455.47	538.40	543.22	0.00	0.00	0.00
7,000.00	90.61	89.39	6,281.72	456.53	638.39	643.21	0.00	0.00	0.00
7,100.00	90.61	89.39	6,280.66	457.59	738.38	743.21	0.00	0.00	0.00
7,200.00	90.61	89.39	6,279.60	458.65	838.37	843.20	0.00	0.00	0.00
7,300.00	90.61	89.39	6,278.55	459.71	938.35	943.20	0.00	0.00	0.00
7,400.00	90.61	89.39	6,277.49	460.77	1,038.34	1,043.19	0.00	0.00	0.00
7,500.00	90.61	89.39	6,276.43	461.83	1,138.33	1,143.18	0.00	0.00	0.00
7,600.00	90.61	89.39	6,275.37	462.89	1,238.32	1,243.18	0.00	0.00	0.00
7,700.00	90.61	89.39	6,274.31	463.95	1,338.31	1,343.17	0.00	0.00	0.00
7,800.00	90.61	89.39	6,273.25	465.01	1,438.30	1,443.17	0.00	0.00	0.00
7,900.00	90.61	89.39	6,272.20	466.07	1,538.29	1,543.16	0.00	0.00	0.00
8,000.00	90.61	89.39	6,271.14	467.13	1,638.28	1,643.16	0.00	0.00	0.00
8,100.00	90.61	89.39	6,270.08	468.18	1,738.26	1,743.15	0.00	0.00	0.00
8,200.00	90.61	89.39	6,269.02	469.24	1,838.25	1,843.15	0.00	0.00	0.00
8,300.00	90.61	89.39	6,267.96	470.30	1,938.24	1,943.14	0.00	0.00	0.00
8,400.00	90.61	89.39	6,266.90	471.36	2,038.23	2,043.13	0.00	0.00	0.00
8,500.00	90.61	89.39	6,265.85	472.42	2,138.22	2,143.13	0.00	0.00	0.00
8,600.00	90.61	89.39	6,264.79	473.48	2,238.21	2,243.12	0.00	0.00	0.00
8,700.00	90.61	89.39	6,263.73	474.54	2,338.20	2,343.12	0.00	0.00	0.00
8,800.00	90.61	89.39	6,262.67	475.60	2,438.19	2,443.11	0.00	0.00	0.00
8,900.00	90.61	89.39	6,261.61	476.66	2,538.18	2,543.11	0.00	0.00	0.00
9,000.00	90.61	89.39	6,260.55	477.72	2,638.16	2,643.10	0.00	0.00	0.00
9,100.00	90.61	89.39	6,259.50	478.78	2,738.15	2,743.09	0.00	0.00	0.00
9,200.00	90.61	89.39	6,258.44	479.84	2,838.14	2,843.09	0.00	0.00	0.00
9,300.00	90.61	89.39	6,257.38	480.90	2,938.13	2,943.08	0.00	0.00	0.00
9,400.00	90.61	89.39	6,256.32	481.96	3,038.12	3,043.08	0.00	0.00	0.00
9,500.00	90.61	89.39	6,255.26	483.02	3,138.11	3,143.07	0.00	0.00	0.00
9,600.00	90.61	89.39	6,254.20	484.07	3,238.10	3,243.07	0.00	0.00	0.00
9,700.00	90.61	89.39	6,253.15	485.13	3,338.09	3,343.06	0.00	0.00	0.00
9,800.00	90.61	89.39	6,252.09	486.19	3,438.07	3,443.06	0.00	0.00	0.00
9,900.00	90.61	89.39	6,251.03	487.25	3,538.06	3,543.05	0.00	0.00	0.00
10,000.00	90.61	89.39	6,249.97	488.31	3,638.05	3,643.04	0.00	0.00	0.00
10,100.00	90.61	89.39	6,248.91	489.37	3,738.04	3,743.04	0.00	0.00	0.00
10,200.00	90.61	89.39	6,247.85	490.43	3,838.03	3,843.03	0.00	0.00	0.00
10,300.00	90.61	89.39	6,246.80	491.49	3,938.02	3,943.03	0.00	0.00	0.00
10,400.00	90.61	89.39	6,245.74	492.55	4,038.01	4,043.02	0.00	0.00	0.00
10,500.00	90.61	89.39	6,244.68	493.61	4,138.00	4,143.02	0.00	0.00	0.00
10,600.00	90.61	89.39	6,243.62	494.67	4,237.98	4,243.01	0.00	0.00	0.00
10,700.00	90.61	89.39	6,242.56	495.73	4,337.97	4,343.01	0.00	0.00	0.00
10,800.00	90.61	89.39	6,241.50	496.79	4,437.96	4,443.00	0.00	0.00	0.00
10,900.00	90.61	89.39	6,240.45	497.85	4,537.95	4,542.99	0.00	0.00	0.00
11,000.00	90.61	89.39	6,239.39	498.90	4,637.94	4,642.99	0.00	0.00	0.00
11,100.00	90.61	89.39	6,238.33	499.96	4,737.93	4,742.98	0.00	0.00	0.00
11,200.00	90.61	89.39	6,237.27	501.02	4,837.92	4,842.98	0.00	0.00	0.00
11,300.00	90.61	89.39	6,236.21	502.08	4,937.91	4,942.97	0.00	0.00	0.00

<b>Database:</b>	EDMDBBW	<b>Local Co-ordinate Reference:</b>	Well Anschutz Eq Farms 4-62-9-3225C2
<b>Company:</b>	Bill Barrett Corp.	<b>TVD Reference:</b>	Well @ 4544.00usft
<b>Project:</b>	Weld Co., CO	<b>MD Reference:</b>	Well @ 4544.00usft
<b>Site:</b>	Sec.9-T4N-R62W	<b>North Reference:</b>	True
<b>Well:</b>	Anschutz Eq Farms 4-62-9-3225C2	<b>Survey Calculation Method:</b>	Minimum Curvature
<b>Wellbore:</b>	Wellbore #1		
<b>Design:</b>	Design #1		

Planned Survey									
Measured Depth (usft)	Inclination (°)	Azimuth (°)	Vertical Depth (usft)	+N/-S (usft)	+E/-W (usft)	Vertical Section (usft)	Dogleg Rate (°/100usft)	Build Rate (°/100usft)	Turn Rate (°/100usft)
11,400.00	90.61	89.39	6,235.15	503.14	5,037.89	5,042.97	0.00	0.00	0.00
11,500.00	90.61	89.39	6,234.10	504.20	5,137.88	5,142.96	0.00	0.00	0.00
11,600.00	90.61	89.39	6,233.04	505.26	5,237.87	5,242.95	0.00	0.00	0.00
11,700.00	90.61	89.39	6,231.98	506.32	5,337.86	5,342.95	0.00	0.00	0.00
11,800.00	90.61	89.39	6,230.92	507.38	5,437.85	5,442.94	0.00	0.00	0.00
11,900.00	90.61	89.39	6,229.86	508.44	5,537.84	5,542.94	0.00	0.00	0.00
12,000.00	90.61	89.39	6,228.80	509.50	5,637.83	5,642.93	0.00	0.00	0.00
12,100.00	90.61	89.39	6,227.75	510.56	5,737.82	5,742.93	0.00	0.00	0.00
12,200.00	90.61	89.39	6,226.69	511.62	5,837.81	5,842.92	0.00	0.00	0.00
12,300.00	90.61	89.39	6,225.63	512.68	5,937.79	5,942.92	0.00	0.00	0.00
12,400.00	90.61	89.39	6,224.57	513.73	6,037.78	6,042.91	0.00	0.00	0.00
12,500.00	90.61	89.39	6,223.51	514.79	6,137.77	6,142.90	0.00	0.00	0.00
12,600.00	90.61	89.39	6,222.45	515.85	6,237.76	6,242.90	0.00	0.00	0.00
12,700.00	90.61	89.39	6,221.39	516.91	6,337.75	6,342.89	0.00	0.00	0.00
12,800.00	90.61	89.39	6,220.34	517.97	6,437.74	6,442.89	0.00	0.00	0.00
12,900.00	90.61	89.39	6,219.28	519.03	6,537.73	6,542.88	0.00	0.00	0.00
13,000.00	90.61	89.39	6,218.22	520.09	6,637.72	6,642.88	0.00	0.00	0.00
13,100.00	90.61	89.39	6,217.16	521.15	6,737.70	6,742.87	0.00	0.00	0.00
13,200.00	90.61	89.39	6,216.10	522.21	6,837.69	6,842.87	0.00	0.00	0.00
13,300.00	90.61	89.39	6,215.04	523.27	6,937.68	6,942.86	0.00	0.00	0.00
13,400.00	90.61	89.39	6,213.99	524.33	7,037.67	7,042.85	0.00	0.00	0.00
13,500.00	90.61	89.39	6,212.93	525.39	7,137.66	7,142.85	0.00	0.00	0.00
13,600.00	90.61	89.39	6,211.87	526.45	7,237.65	7,242.84	0.00	0.00	0.00
13,700.00	90.61	89.39	6,210.81	527.51	7,337.64	7,342.84	0.00	0.00	0.00
13,800.00	90.61	89.39	6,209.75	528.56	7,437.63	7,442.83	0.00	0.00	0.00
13,900.00	90.61	89.39	6,208.69	529.62	7,537.61	7,542.83	0.00	0.00	0.00
14,000.00	90.61	89.39	6,207.64	530.68	7,637.60	7,642.82	0.00	0.00	0.00
14,100.00	90.61	89.39	6,206.58	531.74	7,737.59	7,742.81	0.00	0.00	0.00
14,200.00	90.61	89.39	6,205.52	532.80	7,837.58	7,842.81	0.00	0.00	0.00
14,300.00	90.61	89.39	6,204.46	533.86	7,937.57	7,942.80	0.00	0.00	0.00
14,400.00	90.61	89.39	6,203.40	534.92	8,037.56	8,042.80	0.00	0.00	0.00
14,500.00	90.61	89.39	6,202.34	535.98	8,137.55	8,142.79	0.00	0.00	0.00
14,600.00	90.61	89.39	6,201.29	537.04	8,237.54	8,242.79	0.00	0.00	0.00
14,700.00	90.61	89.39	6,200.23	538.10	8,337.52	8,342.78	0.00	0.00	0.00
14,800.00	90.61	89.39	6,199.17	539.16	8,437.51	8,442.78	0.00	0.00	0.00
14,900.00	90.61	89.39	6,198.11	540.22	8,537.50	8,542.77	0.00	0.00	0.00
15,000.00	90.61	89.39	6,197.05	541.28	8,637.49	8,642.76	0.00	0.00	0.00
15,100.00	90.61	89.39	6,195.99	542.34	8,737.48	8,742.76	0.00	0.00	0.00
15,200.00	90.61	89.39	6,194.94	543.40	8,837.47	8,842.75	0.00	0.00	0.00
15,300.00	90.61	89.39	6,193.88	544.45	8,937.46	8,942.75	0.00	0.00	0.00
15,400.00	90.61	89.39	6,192.82	545.51	9,037.45	9,042.74	0.00	0.00	0.00
15,500.00	90.61	89.39	6,191.76	546.57	9,137.44	9,142.74	0.00	0.00	0.00
15,600.00	90.61	89.39	6,190.70	547.63	9,237.42	9,242.73	0.00	0.00	0.00
15,700.00	90.61	89.39	6,189.64	548.69	9,337.41	9,342.73	0.00	0.00	0.00
15,800.00	90.61	89.39	6,188.59	549.75	9,437.40	9,442.72	0.00	0.00	0.00
15,900.00	90.61	89.39	6,187.53	550.81	9,537.39	9,542.71	0.00	0.00	0.00
16,000.00	90.61	89.39	6,186.47	551.87	9,637.38	9,642.71	0.00	0.00	0.00
<b>TD at 16044.82</b>									
16,044.82	90.61	89.39	6,186.00	552.34	9,682.19	9,687.52	0.00	0.00	0.00

<b>Database:</b>	EDMDBBW	<b>Local Co-ordinate Reference:</b>	Well Anschutz Eq Farms 4-62-9-3225C2
<b>Company:</b>	Bill Barrett Corp.	<b>TVD Reference:</b>	Well @ 4544.00usft
<b>Project:</b>	Weld Co., CO	<b>MD Reference:</b>	Well @ 4544.00usft
<b>Site:</b>	Sec.9-T4N-R62W	<b>North Reference:</b>	True
<b>Well:</b>	Anschutz Eq Farms 4-62-9-3225C2	<b>Survey Calculation Method:</b>	Minimum Curvature
<b>Wellbore:</b>	Wellbore #1		
<b>Design:</b>	Design #1		

Design Targets									
Target Name	Dip Angle	Dip Dir.	TVD	+N/-S	+E/-W	Northing	Easting	Latitude	Longitude
- hit/miss target	(°)	(°)	(usft)	(usft)	(usft)	(usft)	(usft)		
- Shape									
Anschutz Eq Farms 4-62	0.00	0.00	6,186.00	552.34	9,682.19	1,364,350.103	3,333,503.139	40° 19' 38.521 N	104° 18' 13.651 W
- plan hits target center									
- Point									

Casing Points				
Measured Depth	Vertical Depth	Name		
(usft)	(usft)			
		Casing Diameter	Hole Diameter	
		(")	(")	
6,594.91	6,286.01	7" Csg.	7	8-3/4

Formations					
Measured Depth	Vertical Depth	Name		Dip	Dip Direction
(usft)	(usft)		Lithology	(°)	(°)
4,722.63	4,692.00	Shannon		-0.61	89.39
6,009.09	5,972.00	Sharon Springs		-0.61	89.39
6,121.00	6,072.00	Niobrara		-0.61	89.39
6,178.30	6,118.00	A Chalk		-0.61	89.39
6,271.32	6,183.00	B Chalk		-0.61	89.39
6,434.99	6,262.00	Top C target		-0.61	89.39

Plan Annotations				
Measured Depth	Vertical Depth	Local Coordinates		
(usft)	(usft)	+N/-S	+E/-W	Comment
		(usft)	(usft)	
900.00	900.00	0.00	0.00	Start Build 2.00
1,260.36	1,259.41	19.77	-11.02	Start 3719.10 hold at 1260.36 MD
4,979.46	4,949.13	427.36	-238.13	Start Drop -2.00
5,339.82	5,308.54	447.13	-249.15	Start 500.03 hold at 5339.82 MD
5,839.85	5,808.57	447.13	-249.15	Start Build 12.00
6,594.91	6,286.01	452.24	233.34	Start 9449.91 hold at 6594.91 MD
16,044.82	6,186.00	552.34	9,682.19	TD at 16044.82