



Bill Barrett Corporation

Bill Barrett Corp.

Weld Co., CO

Sec.9-T4N-R62W

Anschutz Eq Farms 4-62-9-3225B2

Wellbore #1

Plan: Design #1

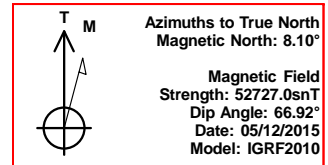
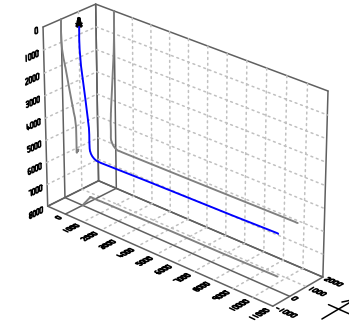
Standard Planning Report

12 May, 2015



Bill Barrett Corp.
Project: Weld Co., CO
Site: Sec.9-T4N-R62W
Well: Anschutz Eq Farms 4-62-9-3225B2
Wellbore: Wellbore #1
Design: Design #1
Lat: 40° 19' 33.369 N
Long: 104° 20' 18.690 W
Pad GL: 4528.00
KB: Well @ 4544.00usft

Archer



SECTION DETAILS

MD	Inc	Azi	TVD	+N/-S	+E/-W	Dleg	TFace	VSec	Annotation
0.00	0.00	0.00	0.00	0.00	0.00	0.00	0.00	0.00	
900.00	0.00	0.00	900.00	0.00	0.00	0.00	0.00	0.00	Start Build 2.00
1491.36	11.83	340.32	1487.17	57.27	-20.48	2.00	340.32	-19.88	Start 3229.77 hold at 1491.36 MD
4721.13	11.83	340.32	4648.37	680.58	-243.38	0.00	0.00	-236.24	Start Drop -2.00
5312.49	0.00	0.00	5235.54	737.85	-263.86	2.00	180.00	-256.12	Start 500.03 hold at 5312.49 MD
5812.52	0.00	0.00	5735.57	737.85	-263.86	0.00	0.00	-256.12	Start Build 12.00
6568.07	90.67	89.40	6213.00	742.94	219.13	12.00	89.40	226.90	Start 9463.55 hold at 6568.07 MD
16031.61	90.67	89.40	6103.00	842.69	9681.51	0.00	0.00	9689.80	TD at 16031.61

WELL DETAILS: Anschutz Eq Farms 4-62-9-3225B2

+N/-S	+E/-W	Northing	Ground Level:	4528.00	Latitude	Longitude	Slot
0.00	0.00	1363700.105	Easting	3323826.959	40° 19' 33.369 N	104° 20' 18.690 W	

PROJECT DETAILS: Weld Co., CO

Geodetic System: US State Plane 1983
Datum: North American Datum 1983
Ellipsoid: GRS 1980
Zone: Colorado Northern Zone

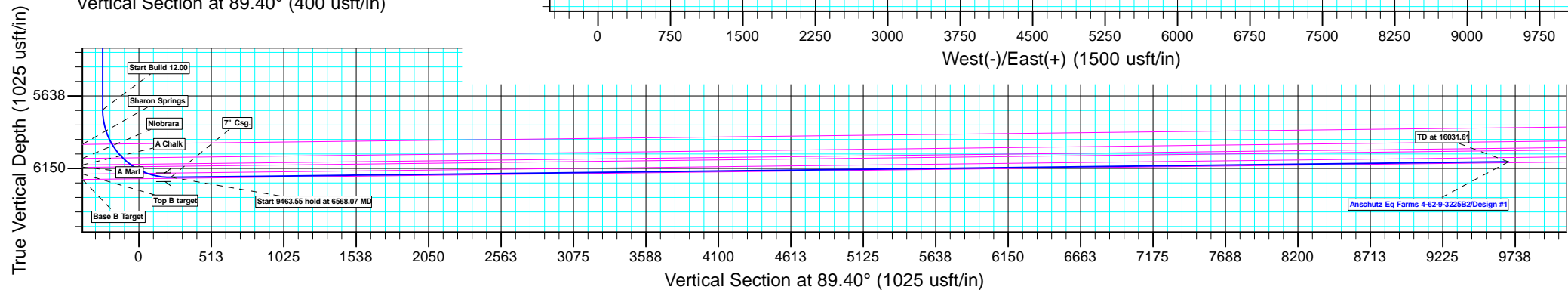
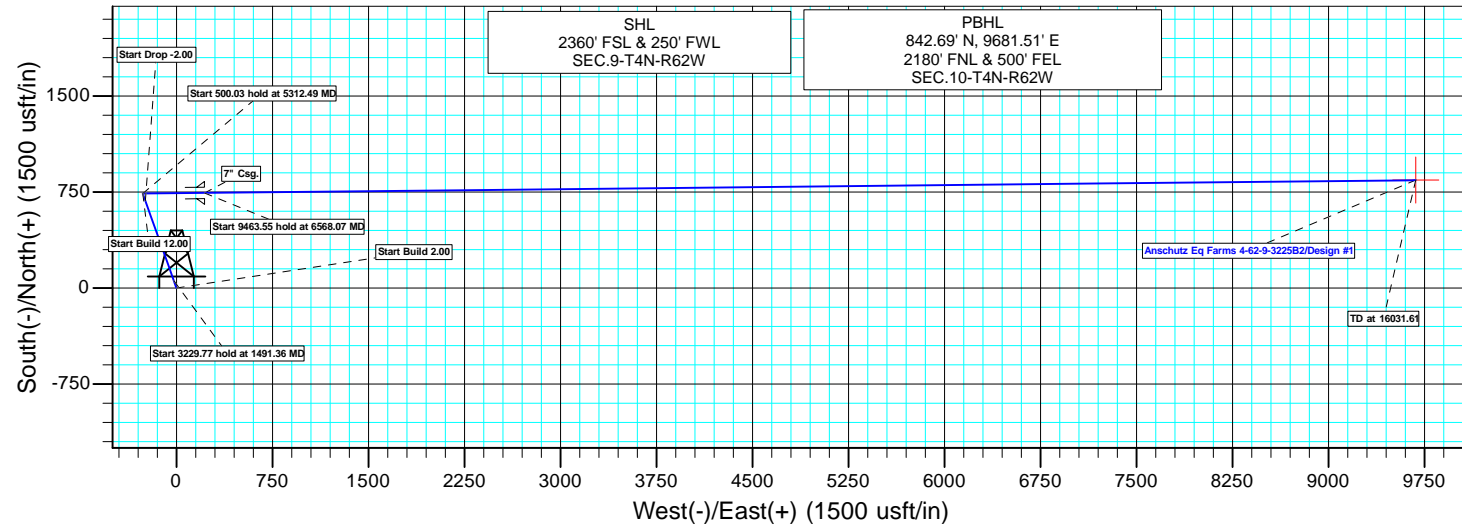
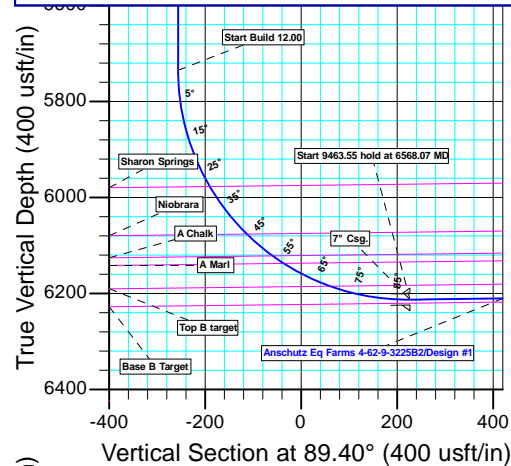
System Datum: Mean Sea Level

CASING DETAILS

TVD	MD	Name
6213.00	6568.07	7" Csg.

WELLBORE TARGET DETAILS (LAT/LONG)

Name	TVD	+N/-S	+E/-W	Latitude	Longitude	Shape Point
Anschutz Eq Farms 4-62-9-3225B2 tgt	6103.00	842.69	9681.51	40° 19' 41.678 N	104° 18' 13.680 W	



Plan: Design #1 (Anschutz Eq Farms 4-62-9-3225B2/Wellbore #1)

Created By: Ricky Osburn Date: 14:31, May 12 2015

Database:	EDMDBBW	Local Co-ordinate Reference:	Well Anschutz Eq Farms 4-62-9-3225B2
Company:	Bill Barrett Corp.	TVD Reference:	Well @ 4544.00usft
Project:	Weld Co., CO	MD Reference:	Well @ 4544.00usft
Site:	Sec.9-T4N-R62W	North Reference:	True
Well:	Anschutz Eq Farms 4-62-9-3225B2	Survey Calculation Method:	Minimum Curvature
Wellbore:	Wellbore #1		
Design:	Design #1		

Project	Weld Co., CO		
Map System:	US State Plane 1983	System Datum:	Mean Sea Level
Geo Datum:	North American Datum 1983		
Map Zone:	Colorado Northern Zone		

Site		Sec.9-T4N-R62W			
Site Position:		Northing:	1,361,884.480 usft	Latitude:	40° 19' 15.341 N
From:	Lat/Long	Easting:	3,324,505.224 usft	Longitude:	104° 20' 10.241 W
Position Uncertainty:	0.00 usft	Slot Radius:	13-3/16 "	Grid Convergence:	0.75 °

Well	Anschutz Eq Farms 4-62-9-3225B2					
Well Position	+N/-S	1,824.37 usft	Northing:	1,363,700.105 usft	Latitude:	40° 19' 33.369 N
	+E/-W	-654.38 usft	Easting:	3,323,826.959 usft	Longitude:	104° 20' 18.690 W
Position Uncertainty		0.00 usft	Wellhead Elevation:	0.00 usft	Ground Level:	4,528.00 usft

Wellbore	Wellbore #1				
Magnetics	Model Name	Sample Date	Declination (°)	Dip Angle (°)	Field Strength (nT)
	IGRF2010	2015/05/12	8.10	66.92	52,727

Design	Design #1			
Audit Notes:				
Version:	Phase:	PLAN	Tie On Depth:	0.00
Vertical Section:	Depth From (TVD) (usft)	+N/-S (usft)	+E/-W (usft)	Direction (°)
	0.00	0.00	0.00	89.40

Plan Sections										
Measured Depth (usft)	Inclination (°)	Azimuth (°)	Vertical Depth (usft)	+N/-S (usft)	+E/-W (usft)	Dogleg Rate (°/100usft)	Build Rate (°/100usft)	Turn Rate (°/100usft)	TFO (°)	Target
0.00	0.00	0.00	0.00	0.00	0.00	0.00	0.00	0.00	0.00	
900.00	0.00	0.00	900.00	0.00	0.00	0.00	0.00	0.00	0.00	
1,491.36	11.83	340.32	1,487.17	57.27	-20.48	2.00	2.00	0.00	340.32	
4,721.13	11.83	340.32	4,648.37	680.58	-243.38	0.00	0.00	0.00	0.00	
5,312.49	0.00	0.00	5,235.54	737.85	-263.86	2.00	-2.00	0.00	180.00	
5,812.52	0.00	0.00	5,735.57	737.85	-263.86	0.00	0.00	0.00	0.00	
6,568.07	90.67	89.40	6,213.00	742.94	219.13	12.00	12.00	0.00	89.40	Anschutz Eq Farms 4
16,031.61	90.67	89.40	6,103.00	842.69	9,681.51	0.00	0.00	0.00	0.00	Anschutz Eq Farms 4

Database:	EDMDBBW	Local Co-ordinate Reference:	Well Anschutz Eq Farms 4-62-9-3225B2
Company:	Bill Barrett Corp.	TVD Reference:	Well @ 4544.00usft
Project:	Weld Co., CO	MD Reference:	Well @ 4544.00usft
Site:	Sec.9-T4N-R62W	North Reference:	True
Well:	Anschutz Eq Farms 4-62-9-3225B2	Survey Calculation Method:	Minimum Curvature
Wellbore:	Wellbore #1		
Design:	Design #1		

Planned Survey									
Measured Depth (usft)	Inclination (°)	Azimuth (°)	Vertical Depth (usft)	+N/-S (usft)	+E/-W (usft)	Vertical Section (usft)	Dogleg Rate (°/100usft)	Build Rate (°/100usft)	Turn Rate (°/100usft)
0.00	0.00	0.00	0.00	0.00	0.00	0.00	0.00	0.00	0.00
100.00	0.00	0.00	100.00	0.00	0.00	0.00	0.00	0.00	0.00
200.00	0.00	0.00	200.00	0.00	0.00	0.00	0.00	0.00	0.00
300.00	0.00	0.00	300.00	0.00	0.00	0.00	0.00	0.00	0.00
400.00	0.00	0.00	400.00	0.00	0.00	0.00	0.00	0.00	0.00
500.00	0.00	0.00	500.00	0.00	0.00	0.00	0.00	0.00	0.00
600.00	0.00	0.00	600.00	0.00	0.00	0.00	0.00	0.00	0.00
700.00	0.00	0.00	700.00	0.00	0.00	0.00	0.00	0.00	0.00
800.00	0.00	0.00	800.00	0.00	0.00	0.00	0.00	0.00	0.00
Start Build 2.00									
900.00	0.00	0.00	900.00	0.00	0.00	0.00	0.00	0.00	0.00
1,000.00	2.00	340.32	999.98	1.64	-0.59	-0.57	2.00	2.00	0.00
1,100.00	4.00	340.32	1,099.84	6.57	-2.35	-2.28	2.00	2.00	0.00
1,200.00	6.00	340.32	1,199.45	14.78	-5.28	-5.13	2.00	2.00	0.00
1,300.00	8.00	340.32	1,298.70	26.25	-9.39	-9.11	2.00	2.00	0.00
1,400.00	10.00	340.32	1,397.47	40.98	-14.66	-14.23	2.00	2.00	0.00
Start 3229.77 hold at 1491.36 MD									
1,491.36	11.83	340.32	1,487.17	57.27	-20.48	-19.88	2.00	2.00	0.00
1,500.00	11.83	340.32	1,495.63	58.93	-21.08	-20.46	0.00	0.00	0.00
1,600.00	11.83	340.32	1,593.50	78.23	-27.98	-27.16	0.00	0.00	0.00
1,700.00	11.83	340.32	1,691.38	97.53	-34.88	-33.86	0.00	0.00	0.00
1,800.00	11.83	340.32	1,789.26	116.83	-41.78	-40.55	0.00	0.00	0.00
1,900.00	11.83	340.32	1,887.13	136.13	-48.68	-47.25	0.00	0.00	0.00
2,000.00	11.83	340.32	1,985.01	155.43	-55.58	-53.95	0.00	0.00	0.00
2,100.00	11.83	340.32	2,082.89	174.73	-62.48	-60.65	0.00	0.00	0.00
2,200.00	11.83	340.32	2,180.77	194.03	-69.39	-67.35	0.00	0.00	0.00
2,300.00	11.83	340.32	2,278.64	213.33	-76.29	-74.05	0.00	0.00	0.00
2,400.00	11.83	340.32	2,376.52	232.63	-83.19	-80.75	0.00	0.00	0.00
2,500.00	11.83	340.32	2,474.40	251.93	-90.09	-87.45	0.00	0.00	0.00
2,600.00	11.83	340.32	2,572.27	271.22	-96.99	-94.15	0.00	0.00	0.00
2,700.00	11.83	340.32	2,670.15	290.52	-103.89	-100.85	0.00	0.00	0.00
2,800.00	11.83	340.32	2,768.03	309.82	-110.79	-107.54	0.00	0.00	0.00
2,900.00	11.83	340.32	2,865.90	329.12	-117.70	-114.24	0.00	0.00	0.00
3,000.00	11.83	340.32	2,963.78	348.42	-124.60	-120.94	0.00	0.00	0.00
3,100.00	11.83	340.32	3,061.66	367.72	-131.50	-127.64	0.00	0.00	0.00
3,200.00	11.83	340.32	3,159.54	387.02	-138.40	-134.34	0.00	0.00	0.00
3,300.00	11.83	340.32	3,257.41	406.32	-145.30	-141.04	0.00	0.00	0.00
3,400.00	11.83	340.32	3,355.29	425.62	-152.20	-147.74	0.00	0.00	0.00
3,500.00	11.83	340.32	3,453.17	444.92	-159.10	-154.44	0.00	0.00	0.00
3,600.00	11.83	340.32	3,551.04	464.22	-166.01	-161.14	0.00	0.00	0.00
3,700.00	11.83	340.32	3,648.92	483.51	-172.91	-167.84	0.00	0.00	0.00
3,800.00	11.83	340.32	3,746.80	502.81	-179.81	-174.53	0.00	0.00	0.00
3,900.00	11.83	340.32	3,844.67	522.11	-186.71	-181.23	0.00	0.00	0.00
4,000.00	11.83	340.32	3,942.55	541.41	-193.61	-187.93	0.00	0.00	0.00
4,100.00	11.83	340.32	4,040.43	560.71	-200.51	-194.63	0.00	0.00	0.00
4,200.00	11.83	340.32	4,138.31	580.01	-207.42	-201.33	0.00	0.00	0.00
4,300.00	11.83	340.32	4,236.18	599.31	-214.32	-208.03	0.00	0.00	0.00
4,400.00	11.83	340.32	4,334.06	618.61	-221.22	-214.73	0.00	0.00	0.00
4,500.00	11.83	340.32	4,431.94	637.91	-228.12	-221.43	0.00	0.00	0.00
4,600.00	11.83	340.32	4,529.81	657.21	-235.02	-228.13	0.00	0.00	0.00
4,700.00	11.83	340.32	4,627.69	676.51	-241.92	-234.83	0.00	0.00	0.00
Start Drop -2.00									
4,721.13	11.83	340.32	4,648.37	680.58	-243.38	-236.24	0.00	0.00	0.00

Database:	EDMDBBW	Local Co-ordinate Reference:	Well Anschutz Eq Farms 4-62-9-3225B2
Company:	Bill Barrett Corp.	TVD Reference:	Well @ 4544.00usft
Project:	Weld Co., CO	MD Reference:	Well @ 4544.00usft
Site:	Sec.9-T4N-R62W	North Reference:	True
Well:	Anschutz Eq Farms 4-62-9-3225B2	Survey Calculation Method:	Minimum Curvature
Wellbore:	Wellbore #1		
Design:	Design #1		

Planned Survey									
Measured Depth (usft)	Inclination (°)	Azimuth (°)	Vertical Depth (usft)	+N/-S (usft)	+E/-W (usft)	Vertical Section (usft)	Dogleg Rate (°/100usft)	Build Rate (°/100usft)	Turn Rate (°/100usft)
Shannon									
4,768.48	10.88	340.32	4,694.80	689.36	-246.52	-239.29	2.00	-2.00	0.00
4,800.00	10.25	340.32	4,725.78	694.80	-248.47	-241.18	2.00	-2.00	0.00
4,900.00	8.25	340.32	4,824.48	709.94	-253.88	-246.43	2.00	-2.00	0.00
5,000.00	6.25	340.32	4,923.67	721.82	-258.13	-250.55	2.00	-2.00	0.00
5,100.00	4.25	340.32	5,023.25	730.43	-261.21	-253.54	2.00	-2.00	0.00
5,200.00	2.25	340.32	5,123.08	735.77	-263.12	-255.40	2.00	-2.00	0.00
5,300.00	0.25	340.32	5,223.05	737.82	-263.85	-256.11	2.00	-2.00	0.00
Start 500.03 hold at 5312.49 MD									
5,312.49	0.00	0.00	5,235.54	737.85	-263.86	-256.12	2.00	-2.00	0.00
5,400.00	0.00	0.00	5,323.05	737.85	-263.86	-256.12	0.00	0.00	0.00
5,500.00	0.00	0.00	5,423.05	737.85	-263.86	-256.12	0.00	0.00	0.00
5,600.00	0.00	0.00	5,523.05	737.85	-263.86	-256.12	0.00	0.00	0.00
5,700.00	0.00	0.00	5,623.05	737.85	-263.86	-256.12	0.00	0.00	0.00
5,800.00	0.00	0.00	5,723.05	737.85	-263.86	-256.12	0.00	0.00	0.00
Start Build 12.00									
5,812.52	0.00	0.00	5,735.57	737.85	-263.86	-256.12	0.00	0.00	0.00
5,825.00	1.50	89.40	5,748.05	737.85	-263.70	-255.96	12.00	12.00	0.00
5,850.00	4.50	89.40	5,773.01	737.87	-262.39	-254.65	12.00	12.00	0.00
5,875.00	7.50	89.40	5,797.87	737.89	-259.78	-252.04	12.00	12.00	0.00
5,900.00	10.50	89.40	5,822.56	737.93	-255.87	-248.13	12.00	12.00	0.00
5,925.00	13.50	89.40	5,847.01	737.99	-250.67	-242.93	12.00	12.00	0.00
5,950.00	16.50	89.40	5,871.16	738.06	-244.20	-236.46	12.00	12.00	0.00
5,975.00	19.50	89.40	5,894.93	738.14	-236.48	-228.74	12.00	12.00	0.00
6,000.00	22.50	89.40	5,918.27	738.23	-227.52	-219.78	12.00	12.00	0.00
6,025.00	25.50	89.40	5,941.11	738.34	-217.36	-209.61	12.00	12.00	0.00
6,050.00	28.50	89.40	5,963.38	738.46	-206.01	-198.27	12.00	12.00	0.00
Sharon Springs									
6,065.90	30.41	89.40	5,977.23	738.54	-198.19	-190.45	12.00	12.00	0.00
6,075.00	31.50	89.40	5,985.03	738.59	-193.51	-185.77	12.00	12.00	0.00
6,100.00	34.50	89.40	6,005.99	738.74	-179.90	-172.16	12.00	12.00	0.00
6,125.00	37.50	89.40	6,026.22	738.89	-165.21	-157.46	12.00	12.00	0.00
6,150.00	40.50	89.40	6,045.64	739.06	-149.48	-141.73	12.00	12.00	0.00
6,175.00	43.50	89.40	6,064.22	739.23	-132.76	-125.01	12.00	12.00	0.00
Niobrara									
6,191.97	45.53	89.40	6,076.32	739.36	-120.86	-113.11	12.00	12.00	0.00
6,200.00	46.50	89.40	6,081.90	739.42	-115.08	-107.33	12.00	12.00	0.00
6,225.00	49.50	89.40	6,098.63	739.61	-96.51	-88.76	12.00	12.00	0.00
6,250.00	52.50	89.40	6,114.36	739.82	-77.08	-69.33	12.00	12.00	0.00
A Chalk									
6,262.26	53.97	89.40	6,121.70	739.92	-67.26	-59.51	12.00	12.00	0.00
6,275.00	55.50	89.40	6,129.05	740.03	-56.86	-49.11	12.00	12.00	0.00
A Marl									
6,290.14	57.31	89.40	6,137.43	740.16	-44.25	-36.50	12.00	12.00	0.00
6,300.00	58.50	89.40	6,142.67	740.25	-35.90	-28.14	12.00	12.00	0.00
6,325.00	61.50	89.40	6,155.17	740.48	-14.25	-6.50	12.00	12.00	0.00
6,350.00	64.50	89.40	6,166.51	740.72	8.02	15.78	12.00	12.00	0.00
6,375.00	67.50	89.40	6,176.68	740.96	30.85	38.61	12.00	12.00	0.00
Top B target									
6,398.94	70.37	89.40	6,185.29	741.19	53.19	60.95	12.00	12.00	0.00
6,400.00	70.50	89.40	6,185.64	741.20	54.19	61.95	12.00	12.00	0.00
6,425.00	73.50	89.40	6,193.37	741.45	77.96	85.72	12.00	12.00	0.00
6,450.00	76.50	89.40	6,199.84	741.71	102.10	109.87	12.00	12.00	0.00

Database:	EDMDBBW	Local Co-ordinate Reference:	Well Anschutz Eq Farms 4-62-9-3225B2
Company:	Bill Barrett Corp.	TVD Reference:	Well @ 4544.00usft
Project:	Weld Co., CO	MD Reference:	Well @ 4544.00usft
Site:	Sec.9-T4N-R62W	North Reference:	True
Well:	Anschutz Eq Farms 4-62-9-3225B2	Survey Calculation Method:	Minimum Curvature
Wellbore:	Wellbore #1		
Design:	Design #1		

Planned Survey									
Measured Depth (usft)	Inclination (°)	Azimuth (°)	Vertical Depth (usft)	+N/-S (usft)	+E/-W (usft)	Vertical Section (usft)	Dogleg Rate (°/100usft)	Build Rate (°/100usft)	Turn Rate (°/100usft)
6,475.00	79.50	89.40	6,205.04	741.97	126.55	134.32	12.00	12.00	0.00
6,500.00	82.50	89.40	6,208.95	742.23	151.24	159.01	12.00	12.00	0.00
6,525.00	85.50	89.40	6,211.56	742.49	176.10	183.87	12.00	12.00	0.00
6,550.00	88.50	89.40	6,212.87	742.75	201.06	208.83	12.00	12.00	0.00
Start 9463.55 hold at 6568.07 MD - 7" Csg.									
6,568.07	90.67	89.40	6,213.00	742.94	219.13	226.90	12.00	12.00	0.00
6,600.00	90.67	89.40	6,212.63	743.28	251.06	258.83	0.00	0.00	0.00
6,700.00	90.67	89.40	6,211.47	744.33	351.04	358.82	0.00	0.00	0.00
6,800.00	90.67	89.40	6,210.31	745.39	451.03	458.81	0.00	0.00	0.00
6,900.00	90.67	89.40	6,209.14	746.44	551.02	558.81	0.00	0.00	0.00
7,000.00	90.67	89.40	6,207.98	747.49	651.01	658.80	0.00	0.00	0.00
7,100.00	90.67	89.40	6,206.82	748.55	750.99	758.79	0.00	0.00	0.00
7,200.00	90.67	89.40	6,205.66	749.60	850.98	858.78	0.00	0.00	0.00
7,300.00	90.67	89.40	6,204.49	750.66	950.97	958.78	0.00	0.00	0.00
7,400.00	90.67	89.40	6,203.33	751.71	1,050.96	1,058.77	0.00	0.00	0.00
7,500.00	90.67	89.40	6,202.17	752.76	1,150.94	1,158.76	0.00	0.00	0.00
7,600.00	90.67	89.40	6,201.01	753.82	1,250.93	1,258.76	0.00	0.00	0.00
7,700.00	90.67	89.40	6,199.85	754.87	1,350.92	1,358.75	0.00	0.00	0.00
7,800.00	90.67	89.40	6,198.68	755.93	1,450.91	1,458.74	0.00	0.00	0.00
7,900.00	90.67	89.40	6,197.52	756.98	1,550.90	1,558.74	0.00	0.00	0.00
8,000.00	90.67	89.40	6,196.36	758.03	1,650.88	1,658.73	0.00	0.00	0.00
8,100.00	90.67	89.40	6,195.20	759.09	1,750.87	1,758.72	0.00	0.00	0.00
8,200.00	90.67	89.40	6,194.03	760.14	1,850.86	1,858.72	0.00	0.00	0.00
8,300.00	90.67	89.40	6,192.87	761.20	1,950.85	1,958.71	0.00	0.00	0.00
8,400.00	90.67	89.40	6,191.71	762.25	2,050.83	2,058.70	0.00	0.00	0.00
8,500.00	90.67	89.40	6,190.55	763.30	2,150.82	2,158.70	0.00	0.00	0.00
8,600.00	90.67	89.40	6,189.38	764.36	2,250.81	2,258.69	0.00	0.00	0.00
8,700.00	90.67	89.40	6,188.22	765.41	2,350.80	2,358.68	0.00	0.00	0.00
8,800.00	90.67	89.40	6,187.06	766.47	2,450.78	2,458.68	0.00	0.00	0.00
8,900.00	90.67	89.40	6,185.90	767.52	2,550.77	2,558.67	0.00	0.00	0.00
9,000.00	90.67	89.40	6,184.73	768.57	2,650.76	2,658.66	0.00	0.00	0.00
9,100.00	90.67	89.40	6,183.57	769.63	2,750.75	2,758.66	0.00	0.00	0.00
9,200.00	90.67	89.40	6,182.41	770.68	2,850.74	2,858.65	0.00	0.00	0.00
9,300.00	90.67	89.40	6,181.25	771.74	2,950.72	2,958.64	0.00	0.00	0.00
9,400.00	90.67	89.40	6,180.09	772.79	3,050.71	3,058.64	0.00	0.00	0.00
9,500.00	90.67	89.40	6,178.92	773.84	3,150.70	3,158.63	0.00	0.00	0.00
9,600.00	90.67	89.40	6,177.76	774.90	3,250.69	3,258.62	0.00	0.00	0.00
9,700.00	90.67	89.40	6,176.60	775.95	3,350.67	3,358.62	0.00	0.00	0.00
9,800.00	90.67	89.40	6,175.44	777.01	3,450.66	3,458.61	0.00	0.00	0.00
9,900.00	90.67	89.40	6,174.27	778.06	3,550.65	3,558.60	0.00	0.00	0.00
10,000.00	90.67	89.40	6,173.11	779.11	3,650.64	3,658.60	0.00	0.00	0.00
10,100.00	90.67	89.40	6,171.95	780.17	3,750.62	3,758.59	0.00	0.00	0.00
10,200.00	90.67	89.40	6,170.79	781.22	3,850.61	3,858.58	0.00	0.00	0.00
10,300.00	90.67	89.40	6,169.62	782.28	3,950.60	3,958.58	0.00	0.00	0.00
10,400.00	90.67	89.40	6,168.46	783.33	4,050.59	4,058.57	0.00	0.00	0.00
10,500.00	90.67	89.40	6,167.30	784.38	4,150.58	4,158.56	0.00	0.00	0.00
10,600.00	90.67	89.40	6,166.14	785.44	4,250.56	4,258.56	0.00	0.00	0.00
10,700.00	90.67	89.40	6,164.97	786.49	4,350.55	4,358.55	0.00	0.00	0.00
10,800.00	90.67	89.40	6,163.81	787.55	4,450.54	4,458.54	0.00	0.00	0.00
10,900.00	90.67	89.40	6,162.65	788.60	4,550.53	4,558.53	0.00	0.00	0.00
11,000.00	90.67	89.40	6,161.49	789.65	4,650.51	4,658.53	0.00	0.00	0.00
11,100.00	90.67	89.40	6,160.33	790.71	4,750.50	4,758.52	0.00	0.00	0.00
11,200.00	90.67	89.40	6,159.16	791.76	4,850.49	4,858.51	0.00	0.00	0.00
11,300.00	90.67	89.40	6,158.00	792.82	4,950.48	4,958.51	0.00	0.00	0.00

Database:	EDMDBBW	Local Co-ordinate Reference:	Well Anschutz Eq Farms 4-62-9-3225B2
Company:	Bill Barrett Corp.	TVD Reference:	Well @ 4544.00usft
Project:	Weld Co., CO	MD Reference:	Well @ 4544.00usft
Site:	Sec.9-T4N-R62W	North Reference:	True
Well:	Anschutz Eq Farms 4-62-9-3225B2	Survey Calculation Method:	Minimum Curvature
Wellbore:	Wellbore #1		
Design:	Design #1		

Planned Survey									
Measured Depth (usft)	Inclination (°)	Azimuth (°)	Vertical Depth (usft)	+N/-S (usft)	+E/-W (usft)	Vertical Section (usft)	Dogleg Rate (°/100usft)	Build Rate (°/100usft)	Turn Rate (°/100usft)
11,400.00	90.67	89.40	6,156.84	793.87	5,050.46	5,058.50	0.00	0.00	0.00
11,500.00	90.67	89.40	6,155.68	794.92	5,150.45	5,158.49	0.00	0.00	0.00
11,600.00	90.67	89.40	6,154.51	795.98	5,250.44	5,258.49	0.00	0.00	0.00
11,700.00	90.67	89.40	6,153.35	797.03	5,350.43	5,358.48	0.00	0.00	0.00
11,800.00	90.67	89.40	6,152.19	798.09	5,450.42	5,458.47	0.00	0.00	0.00
11,900.00	90.67	89.40	6,151.03	799.14	5,550.40	5,558.47	0.00	0.00	0.00
12,000.00	90.67	89.40	6,149.86	800.19	5,650.39	5,658.46	0.00	0.00	0.00
12,100.00	90.67	89.40	6,148.70	801.25	5,750.38	5,758.45	0.00	0.00	0.00
12,200.00	90.67	89.40	6,147.54	802.30	5,850.37	5,858.45	0.00	0.00	0.00
12,300.00	90.67	89.40	6,146.38	803.36	5,950.35	5,958.44	0.00	0.00	0.00
12,400.00	90.67	89.40	6,145.21	804.41	6,050.34	6,058.43	0.00	0.00	0.00
12,500.00	90.67	89.40	6,144.05	805.46	6,150.33	6,158.43	0.00	0.00	0.00
12,600.00	90.67	89.40	6,142.89	806.52	6,250.32	6,258.42	0.00	0.00	0.00
12,700.00	90.67	89.40	6,141.73	807.57	6,350.30	6,358.41	0.00	0.00	0.00
12,800.00	90.67	89.40	6,140.56	808.63	6,450.29	6,458.41	0.00	0.00	0.00
12,900.00	90.67	89.40	6,139.40	809.68	6,550.28	6,558.40	0.00	0.00	0.00
13,000.00	90.67	89.40	6,138.24	810.73	6,650.27	6,658.39	0.00	0.00	0.00
13,100.00	90.67	89.40	6,137.08	811.79	6,750.26	6,758.39	0.00	0.00	0.00
13,200.00	90.67	89.40	6,135.92	812.84	6,850.24	6,858.38	0.00	0.00	0.00
13,300.00	90.67	89.40	6,134.75	813.90	6,950.23	6,958.37	0.00	0.00	0.00
13,400.00	90.67	89.40	6,133.59	814.95	7,050.22	7,058.37	0.00	0.00	0.00
13,500.00	90.67	89.40	6,132.43	816.00	7,150.21	7,158.36	0.00	0.00	0.00
13,600.00	90.67	89.40	6,131.27	817.06	7,250.19	7,258.35	0.00	0.00	0.00
13,700.00	90.67	89.40	6,130.10	818.11	7,350.18	7,358.35	0.00	0.00	0.00
13,800.00	90.67	89.40	6,128.94	819.17	7,450.17	7,458.34	0.00	0.00	0.00
13,900.00	90.67	89.40	6,127.78	820.22	7,550.16	7,558.33	0.00	0.00	0.00
14,000.00	90.67	89.40	6,126.62	821.27	7,650.14	7,658.33	0.00	0.00	0.00
14,100.00	90.67	89.40	6,125.45	822.33	7,750.13	7,758.32	0.00	0.00	0.00
14,200.00	90.67	89.40	6,124.29	823.38	7,850.12	7,858.31	0.00	0.00	0.00
14,300.00	90.67	89.40	6,123.13	824.44	7,950.11	7,958.31	0.00	0.00	0.00
14,400.00	90.67	89.40	6,121.97	825.49	8,050.10	8,058.30	0.00	0.00	0.00
14,500.00	90.67	89.40	6,120.80	826.54	8,150.08	8,158.29	0.00	0.00	0.00
14,600.00	90.67	89.40	6,119.64	827.60	8,250.07	8,258.28	0.00	0.00	0.00
14,700.00	90.67	89.40	6,118.48	828.65	8,350.06	8,358.28	0.00	0.00	0.00
14,800.00	90.67	89.40	6,117.32	829.71	8,450.05	8,458.27	0.00	0.00	0.00
14,900.00	90.67	89.40	6,116.16	830.76	8,550.03	8,558.26	0.00	0.00	0.00
15,000.00	90.67	89.40	6,114.99	831.81	8,650.02	8,658.26	0.00	0.00	0.00
15,100.00	90.67	89.40	6,113.83	832.87	8,750.01	8,758.25	0.00	0.00	0.00
15,200.00	90.67	89.40	6,112.67	833.92	8,850.00	8,858.24	0.00	0.00	0.00
15,300.00	90.67	89.40	6,111.51	834.98	8,949.98	8,958.24	0.00	0.00	0.00
15,400.00	90.67	89.40	6,110.34	836.03	9,049.97	9,058.23	0.00	0.00	0.00
15,500.00	90.67	89.40	6,109.18	837.09	9,149.96	9,158.22	0.00	0.00	0.00
15,600.00	90.67	89.40	6,108.02	838.14	9,249.95	9,258.22	0.00	0.00	0.00
15,700.00	90.67	89.40	6,106.86	839.19	9,349.94	9,358.21	0.00	0.00	0.00
15,800.00	90.67	89.40	6,105.69	840.25	9,449.92	9,458.20	0.00	0.00	0.00
15,900.00	90.67	89.40	6,104.53	841.30	9,549.91	9,558.20	0.00	0.00	0.00
16,000.00	90.67	89.40	6,103.37	842.36	9,649.90	9,658.19	0.00	0.00	0.00
TD at 16031.61									
16,031.61	90.67	89.40	6,103.00	842.69	9,681.51	9,689.80	0.00	0.00	0.00

Database:	EDMDBBW	Local Co-ordinate Reference:	Well Anschutz Eq Farms 4-62-9-3225B2
Company:	Bill Barrett Corp.	TVD Reference:	Well @ 4544.00usft
Project:	Weld Co., CO	MD Reference:	Well @ 4544.00usft
Site:	Sec.9-T4N-R62W	North Reference:	True
Well:	Anschutz Eq Farms 4-62-9-3225B2	Survey Calculation Method:	Minimum Curvature
Wellbore:	Wellbore #1		
Design:	Design #1		

Design Targets									
Target Name									
- hit/miss target	Dip Angle	Dip Dir.	TVD	+N/-S	+E/-W	Northing	Easting	Latitude	Longitude
- Shape	(°)	(°)	(usft)	(usft)	(usft)	(usft)	(usft)		
Anschutz Eq Farms 4-62	0.00	0.00	6,103.00	842.69	9,681.51	1,364,669.527	3,333,496.599	40° 19' 41.678 N	104° 18' 13.680 W
- plan hits target center									
- Point									

Casing Points				
Measured Depth	Vertical Depth		Casing Diameter	Hole Diameter
(usft)	(usft)	Name	(")	(")
6,568.07	6,213.00	7" Csg.	7	8-3/4

Formations					
Measured Depth	Vertical Depth			Dip	Dip
(usft)	(usft)	Name	Lithology	(°)	Direction (°)
4,768.48	4,692.00	Shannon		-0.67	89.40
6,065.90	5,975.00	Sharon Springs		-0.67	89.40
6,191.97	6,075.00	Niobrara		-0.67	89.40
6,262.26	6,121.00	A Chalk		-0.67	89.40
6,290.14	6,137.00	A Marl		-0.67	89.40
6,398.94	6,186.00	Top B target		-0.67	89.40

Plan Annotations				
Measured Depth	Vertical Depth	Local Coordinates		
(usft)	(usft)	+N/-S (usft)	+E/-W (usft)	Comment
900.00	900.00	0.00	0.00	Start Build 2.00
1,491.36	1,487.17	57.27	-20.48	Start 3229.77 hold at 1491.36 MD
4,721.13	4,648.37	680.58	-243.38	Start Drop -2.00
5,312.49	5,235.54	737.85	-263.86	Start 500.03 hold at 5312.49 MD
5,812.52	5,735.57	737.85	-263.86	Start Build 12.00
6,568.07	6,213.00	742.94	219.13	Start 9463.55 hold at 6568.07 MD
16,031.61	6,103.00	842.69	9,681.51	TD at 16031.61