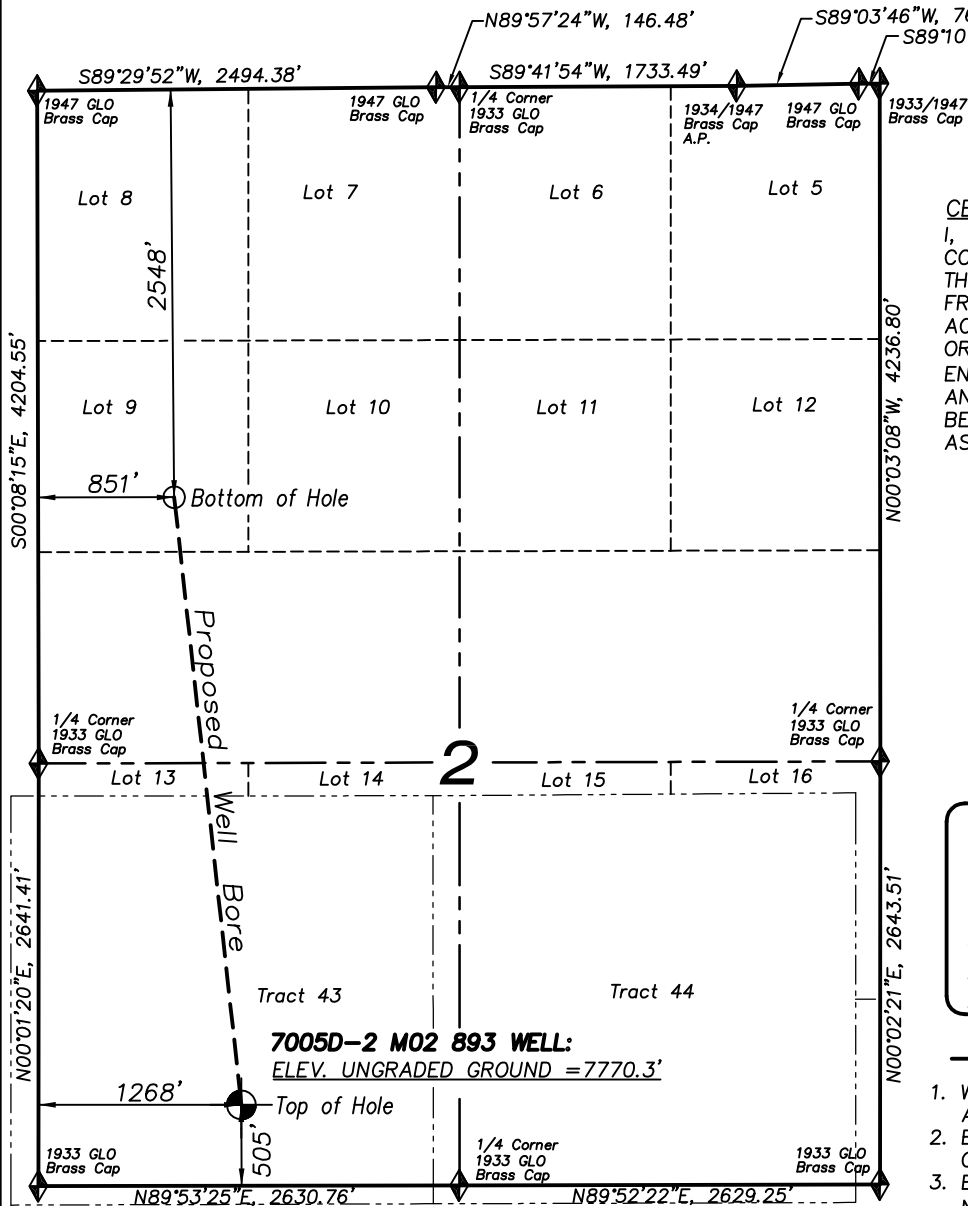
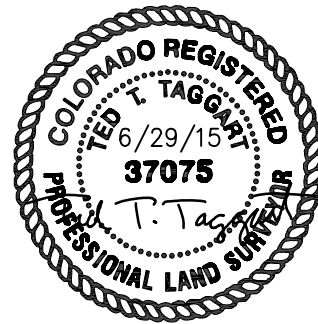


# T8S, R93W, 6TH P.M.



**CERTIFICATE OF SURVEYOR**  
I, TED TAGGART OF FRUITA, COLORADO HEREBY CERTIFY THAT THIS MAP WAS MADE FROM NOTES TAKEN DURING AN ACTUAL SURVEY MADE BY ME OR UNDER MY DIRECTION FOR ENCANA OIL & GAS (USA) INC. AND THAT THIS LOCATION HAS BEEN STAKED ON THE GROUND AS SHOWN HEREON.



## NOTES

1. WELL FOOTAGES ARE MEASURED AT RIGHT ANGLES TO SECTION LINES.
2. BASIS OF BEARING: GEODETIC- BASED ON GPS OBSERVATIONS.
3. ELEVATIONS BASED ON GPS OBSERVATIONS, NAVD 88 (GEOID 03), POST PROCESSED USING NGS OPUS.
4. THE BOTTOM HOLE BEARS N06°18'25"W, 3821' FROM TOP OF HOLE.
5. SEE ADDENDUM TO LEGAL PLAT (SHEET 1e) FOR VISIBLE IMPROVEMENTS WITHIN 500 FEET OF THE PROPOSED OIL & GAS LOCATION.
6. ALL GPS PROCEDURES COMPLY WITH COGCC RULE NO. 215. PDOP READING: 1.4  
GPS OPERATOR: B. TAGGART JUNE 18, 2015

MAP to ACCOMPANY

APPLICATION for PERMIT to DRILL  
**Encana Oil & Gas (USA) Inc.**  
**MCU 7005D-2 M02 893 Well**

SW1/4 SW1/4, SECTION 2

T8S, R93W, 6th P.M.

GARFIELD COUNTY, COLORADO

## LEGEND

- ◆ SECTION CORNER LOCATED
- SURFACE LOCATION
- BOTTOM HOLE LOCATION
- RECORD LOCATION OF CORNER



906 Main Street  
Evanston, Wyoming 82930  
Phone No. (307) 789-4545

Location Plat		Scale: 1" = 1200'	SHEET <b>1a</b> OF 10
Project No.	14-04-09	Date Surveyed: 6/18/15	
Date Drawn: 6/18/15		Latest Revision Date: 6/29/15	