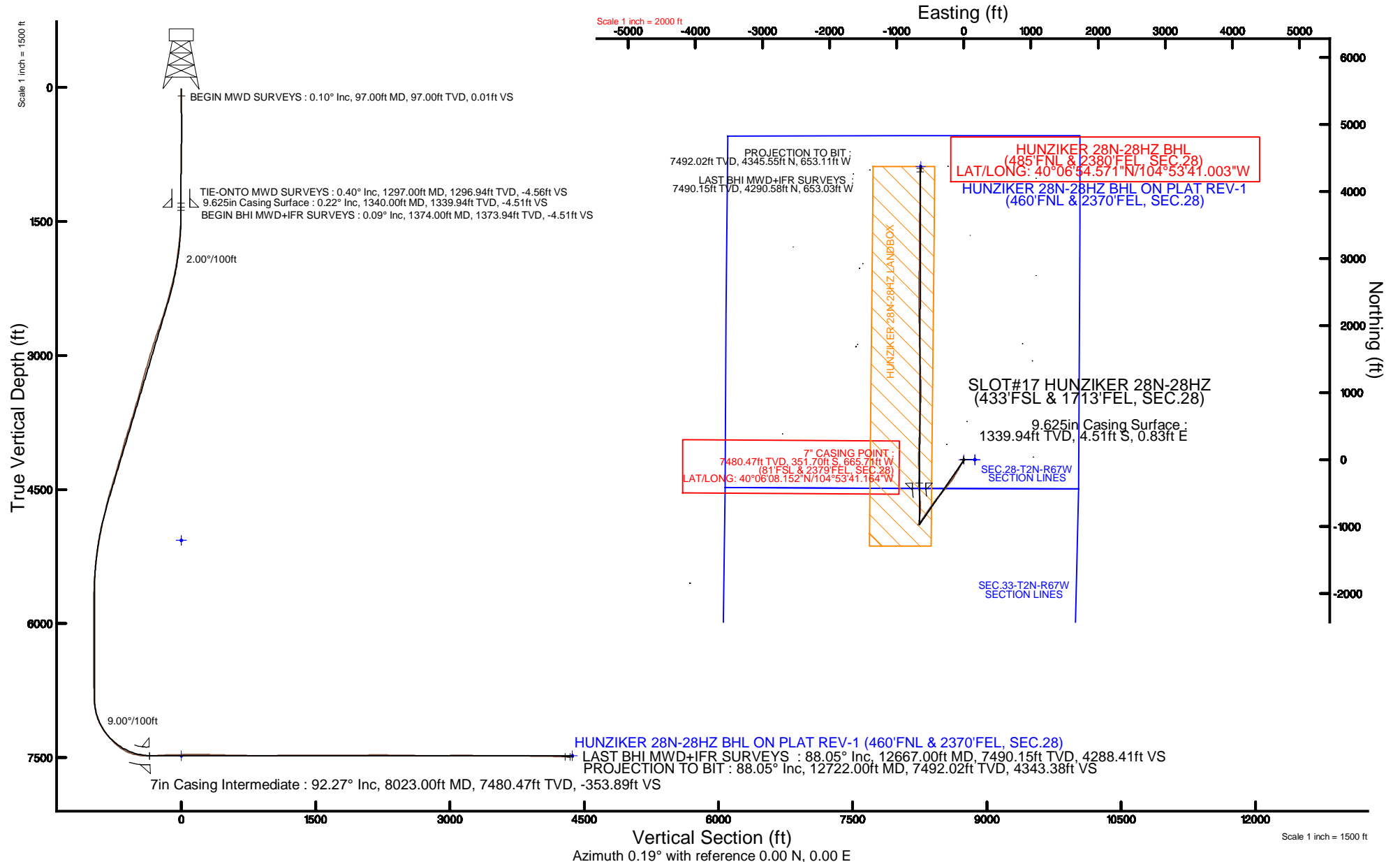


# KERR-MCGEE OIL & GAS ONSHORE LP (WA)

Location: COLORADO Slot: SLOT#17 HUNZIKER 28N-28HZ (433'FSL & 1713'FEL, SEC.28)  
 Field: WELD COUNTY (UTM/TRUE NORTH) Well: HUNZIKER 28N-28HZ  
 Facility: SEC.28-T2N-R67W Wellbore: HUNZIKER 28N-28HZ PWB

Plot reference wellpath is HUNZIKER 28N-28HZ (REV-B.0) PWP

True vertical depths are referenced to PRECISION 460 (20'KB) (RKB)	Grid System: NAD83 / UTM Zone 13 North, US feet
Measured depths are referenced to PRECISION 460 (20'KB) (RKB)	North Reference: True north
PRECISION 460 (20'KB) (RKB) to Mean Sea Level: 5069 feet	Scale: True distance
Mean Sea Level to Mud line (At Slot: SLOT#17 HUNZIKER 28N-28HZ (433'FSL & 1713'FEL, SEC.28)): 0 feet	Depths are in feet
Coordinates are in feet referenced to Slot	Created by: amarc on 04/Jun/2015



REFERENCE WELLPATH IDENTIFICATION			
Operator	KERR-MCGEE OIL & GAS ONSHORE LP (WA)	Slot	SLOT#17 HUNZIKER 28N-28HZ (433'FSL & 1713'FEL, SEC.28)
Area	COLORADO	Well	HUNZIKER 28N-28HZ
Field	WELD COUNTY (UTM/TRUE NORTH)	Wellbore	HUNZIKER 28N-28HZ AWP <1297>
Facility	SEC.28-T2N-R67W		

REPORT SETUP INFORMATION			
Projection System	NAD83 / UTM Zone 13 North, US feet	Software System	WellArchitect® 4.0.0
North Reference	True	User	Amarcar
Scale	0.999601	Report Generated	04/Jun/2015 at 12:45
Convergence at slot	0.07° East	Database/Source file	KERR MCGEE UTM/HUNZIKER_28N-28HZ_AWP_1297_.xml

WELLPATH LOCATION						
	Local coordinates		Grid coordinates		Geographic coordinates	
	North[ft]	East[ft]	Easting[US ft]	Northing[US ft]	Latitude	Longitude
Slot Location	-4193.00	-1065.27	1670508.07	14564342.23	40°06'11.628"N	104°53'32.597"W
Facility Reference Pt			1671567.66	14568534.88	40°06'53.064"N	104°53'18.888"W
Field Reference Pt			1698235.31	14552047.82	40°04'09.600"N	104°47'36.000"W

WELLPATH DATUM			
Calculation method	Minimum curvature	PRECISION 460 (20'KB) (RKB) to Facility Vertical Datum	5069.00ft
Horizontal Reference Pt	Slot	PRECISION 460 (20'KB) (RKB) to Mean Sea Level	5069.00ft
Vertical Reference Pt	PRECISION 460 (20'KB) (RKB)	PRECISION 460 (20'KB) (RKB) to Mud Line at Slot (SLOT#17 HUNZIKER 28N-28HZ (433'FSL & 1713'FEL, SEC.28))	5069.00ft
MD Reference Pt	PRECISION 460 (20'KB) (RKB)	Section Origin	N 0.00, E 0.00 ft
Field Vertical Reference	Mean Sea Level	Section Azimuth	0.19°

# Actual Wellpath Report

HUNZIKER 28N-28HZ AWP

Page 2 of 6

## REFERENCE WELLPATH IDENTIFICATION

Operator	KERR-MCGEE OIL & GAS ONSHORE LP (WA)	Slot	SLOT#17 HUNZIKER 28N-28HZ (433'FSL & 1713'FEL, SEC.28)
Area	COLORADO	Well	HUNZIKER 28N-28HZ
Field	WELD COUNTY (UTM/TRUE NORTH)	Wellbore	HUNZIKER 28N-28HZ AWB <1297>
Facility	SEC.28-T2N-R67W		

## WELLPATH DATA (116 stations) † = interpolated/extrapolated station

MD [ft]	Inclination [°]	Azimuth [°]	TVD [ft]	Vert Sect [ft]	North [ft]	East [ft]	Latitude	Longitude	DLS [°/100ft]	Comments
0.00†	0.000	278.400	0.00	0.00	0.00	0.00	40°06'11.628"N	104°53'32.597"W	0.00	
20.00	0.000	278.400	20.00	0.00	0.00	0.00	40°06'11.628"N	104°53'32.597"W	0.00	
97.00	0.100	278.400	97.00	0.01	0.01	-0.07	40°06'11.628"N	104°53'32.598"W	0.13	BEGIN MWD SURVEYS
186.00	0.400	329.300	186.00	0.29	0.29	-0.30	40°06'11.631"N	104°53'32.601"W	0.39	
274.00	0.600	354.300	274.00	1.01	1.01	-0.50	40°06'11.638"N	104°53'32.603"W	0.33	
362.00	0.700	343.700	361.99	1.98	1.99	-0.70	40°06'11.648"N	104°53'32.606"W	0.18	
448.00	0.100	157.500	447.99	2.42	2.42	-0.82	40°06'11.652"N	104°53'32.608"W	0.93	
543.00	0.300	204.100	542.99	2.11	2.12	-0.89	40°06'11.649"N	104°53'32.608"W	0.26	
639.00	0.800	183.400	638.98	1.21	1.22	-1.03	40°06'11.640"N	104°53'32.610"W	0.55	
734.00	0.800	175.300	733.97	-0.11	-0.10	-1.02	40°06'11.627"N	104°53'32.610"W	0.12	
826.00	0.800	173.400	825.96	-1.39	-1.38	-0.89	40°06'11.614"N	104°53'32.608"W	0.03	
922.00	1.100	184.500	921.95	-2.97	-2.97	-0.89	40°06'11.599"N	104°53'32.608"W	0.37	
1018.00	0.600	155.800	1017.94	-4.35	-4.34	-0.75	40°06'11.585"N	104°53'32.607"W	0.67	
1112.00	0.300	53.200	1111.94	-4.65	-4.65	-0.35	40°06'11.582"N	104°53'32.602"W	0.77	
1208.00	0.300	108.500	1207.94	-4.57	-4.58	0.09	40°06'11.583"N	104°53'32.596"W	0.29	
1297.00	0.400	73.600	1296.94	-4.56	-4.56	0.61	40°06'11.583"N	104°53'32.589"W	0.26	TIE-ONTO MWD SURVEYS
1374.00	0.090	116.580	1373.94	-4.51	-4.51	0.92	40°06'11.583"N	104°53'32.585"W	0.44	BEGIN BHI MWD+IFR SURVEYS
1468.00	2.160	230.540	1467.91	-5.67	-5.67	-0.38	40°06'11.572"N	104°53'32.602"W	2.34	
1558.00	3.730	214.400	1557.79	-9.18	-9.17	-3.35	40°06'11.537"N	104°53'32.640"W	1.96	
1648.00	6.070	211.970	1647.46	-15.64	-15.62	-7.52	40°06'11.474"N	104°53'32.694"W	2.61	
1737.00	6.740	206.490	1735.90	-24.33	-24.28	-12.34	40°06'11.388"N	104°53'32.756"W	1.02	
1827.00	8.560	214.920	1825.10	-34.57	-34.50	-18.53	40°06'11.287"N	104°53'32.836"W	2.37	
1917.00	9.750	215.710	1913.95	-46.27	-46.19	-26.82	40°06'11.172"N	104°53'32.942"W	1.33	
2007.00	11.670	209.090	2002.38	-60.45	-60.33	-35.69	40°06'11.032"N	104°53'33.056"W	2.53	
2097.00	13.640	208.830	2090.19	-77.73	-77.58	-45.23	40°06'10.861"N	104°53'33.179"W	2.19	
2187.00	15.280	205.820	2177.34	-97.74	-97.56	-55.52	40°06'10.664"N	104°53'33.311"W	2.00	
2277.00	15.970	208.550	2264.02	-119.32	-119.11	-66.60	40°06'10.451"N	104°53'33.454"W	1.12	
2366.00	17.450	208.570	2349.26	-141.84	-141.58	-78.83	40°06'10.229"N	104°53'33.612"W	1.66	
2456.00	18.800	210.200	2434.79	-166.27	-165.97	-92.58	40°06'09.988"N	104°53'33.788"W	1.60	
2546.00	20.020	212.620	2519.67	-191.83	-191.48	-108.18	40°06'09.736"N	104°53'33.989"W	1.62	
2726.00	22.040	206.860	2687.69	-248.03	-247.57	-140.06	40°06'09.181"N	104°53'34.399"W	1.60	
2906.00	21.800	217.360	2854.74	-304.86	-304.29	-175.61	40°06'08.621"N	104°53'34.857"W	2.18	
3085.00	21.160	219.330	3021.31	-356.41	-355.70	-216.26	40°06'08.113"N	104°53'35.380"W	0.54	
3265.00	19.420	217.160	3190.14	-405.51	-404.68	-254.93	40°06'07.629"N	104°53'35.878"W	1.05	
3445.00	19.250	219.530	3359.99	-452.37	-451.41	-291.89	40°06'07.167"N	104°53'36.353"W	0.45	
3625.00	19.630	217.140	3529.73	-499.48	-498.40	-329.03	40°06'06.703"N	104°53'36.831"W	0.49	
3804.00	23.020	224.350	3696.48	-548.64	-547.42	-371.67	40°06'06.218"N	104°53'37.380"W	2.39	
3984.00	21.830	216.710	3862.90	-600.79	-599.43	-416.29	40°06'05.704"N	104°53'37.954"W	1.75	
4164.00	18.770	214.300	4031.70	-651.68	-650.20	-452.62	40°06'05.203"N	104°53'38.422"W	1.76	
4343.00	19.110	217.790	4201.02	-698.74	-697.14	-486.81	40°06'04.739"N	104°53'38.862"W	0.66	
4523.00	20.970	214.230	4370.12	-748.78	-747.07	-522.99	40°06'04.245"N	104°53'39.327"W	1.24	
4703.00	18.230	214.100	4539.67	-798.84	-797.02	-556.90	40°06'03.752"N	104°53'39.763"W	1.52	
4793.00	17.050	213.370	4625.44	-821.57	-819.70	-572.05	40°06'03.528"N	104°53'39.958"W	1.33	
4882.00	15.860	212.670	4710.79	-842.75	-840.83	-585.79	40°06'03.319"N	104°53'40.135"W	1.36	
4972.00	15.380	212.570	4797.47	-863.20	-861.24	-598.85	40°06'03.117"N	104°53'40.303"W	0.53	

# Actual Wellpath Report

HUNZIKER 28N-28HZ AWP

Page 3 of 6

## REFERENCE WELLPATH IDENTIFICATION

Operator	KERR-MCGEE OIL & GAS ONSHORE LP (WA)	Slot	SLOT#17 HUNZIKER 28N-28HZ (433'FSL & 1713'FEL, SEC.28)
Area	COLORADO	Well	HUNZIKER 28N-28HZ
Field	WELD COUNTY (UTM/TRUE NORTH)	Wellbore	HUNZIKER 28N-28HZ AWP <1297>
Facility	SEC.28-T2N-R67W		

## WELLPATH DATA (116 stations) † = interpolated/extrapolated station

MD [ft]	Inclination [°]	Azimuth [°]	TVD [ft]	Vert Sect [ft]	North [ft]	East [ft]	Latitude	Longitude	DLS [°/100ft]	Comments
5062.00	14.890	211.870	4884.35	-883.12	-881.12	-611.38	40°06'02.921"N	104°53'40.465"W	0.58	
5152.00	12.910	213.930	4971.71	-901.32	-899.28	-623.10	40°06'02.741"N	104°53'40.615"W	2.27	
5242.00	11.740	212.760	5059.63	-917.40	-915.33	-633.67	40°06'02.583"N	104°53'40.751"W	1.33	
5332.00	10.940	213.050	5147.87	-932.29	-930.18	-643.28	40°06'02.436"N	104°53'40.875"W	0.89	
5421.00	8.950	219.600	5235.54	-944.73	-942.60	-652.30	40°06'02.313"N	104°53'40.991"W	2.57	
5511.00	8.340	222.580	5324.51	-954.96	-952.80	-661.18	40°06'02.212"N	104°53'41.105"W	0.84	
5601.00	6.740	218.930	5413.73	-963.90	-961.71	-668.91	40°06'02.124"N	104°53'41.205"W	1.85	
5691.00	4.430	220.290	5503.30	-970.68	-968.47	-674.48	40°06'02.057"N	104°53'41.277"W	2.57	
5781.00	2.590	194.980	5593.13	-975.31	-973.09	-677.25	40°06'02.012"N	104°53'41.312"W	2.63	
5871.00	0.990	169.040	5683.09	-978.04	-975.82	-677.63	40°06'01.985"N	104°53'41.317"W	1.95	
5960.00	0.960	187.080	5772.07	-979.53	-977.31	-677.58	40°06'01.970"N	104°53'41.316"W	0.35	
6050.00	0.810	70.320	5862.07	-980.06	-977.85	-677.07	40°06'01.965"N	104°53'41.310"W	1.68	
6320.00	0.530	320.870	6132.06	-978.45	-976.24	-676.06	40°06'01.981"N	104°53'41.297"W	0.41	
6410.00	0.830	206.400	6222.05	-978.71	-976.50	-676.62	40°06'01.978"N	104°53'41.304"W	1.28	
6678.00	0.800	58.910	6490.04	-979.48	-977.27	-675.88	40°06'01.970"N	104°53'41.295"W	0.58	
6858.00	0.780	34.790	6670.03	-977.82	-975.61	-674.10	40°06'01.987"N	104°53'41.272"W	0.18	
6948.00	0.720	351.470	6760.02	-976.76	-974.55	-673.84	40°06'01.997"N	104°53'41.268"W	0.62	
7038.00	2.170	359.700	6849.99	-974.50	-972.29	-673.93	40°06'02.020"N	104°53'41.269"W	1.62	
7127.00	9.600	12.520	6938.46	-965.55	-963.35	-672.33	40°06'02.108"N	104°53'41.249"W	8.43	
7217.00	15.490	9.590	7026.27	-946.34	-944.15	-668.69	40°06'02.298"N	104°53'41.202"W	6.58	
7307.00	25.280	5.720	7110.54	-915.28	-913.11	-664.77	40°06'02.604"N	104°53'41.152"W	10.97	
7397.00	33.410	6.200	7188.92	-871.44	-869.28	-660.17	40°06'03.038"N	104°53'41.092"W	9.04	
7487.00	40.900	9.250	7260.61	-817.62	-815.48	-652.74	40°06'03.569"N	104°53'40.997"W	8.57	
7577.00	45.780	2.240	7326.08	-756.22	-754.10	-646.74	40°06'04.176"N	104°53'40.920"W	7.61	
7666.00	52.170	358.280	7384.49	-689.14	-687.02	-646.55	40°06'04.839"N	104°53'40.917"W	7.92	
7756.00	63.930	355.600	7432.03	-613.05	-610.91	-650.73	40°06'05.591"N	104°53'40.971"W	13.31	
7846.00	75.980	353.660	7462.83	-529.06	-526.90	-658.68	40°06'06.421"N	104°53'41.073"W	13.54	
7936.00	83.860	358.460	7478.58	-440.77	-438.59	-664.72	40°06'07.294"N	104°53'41.151"W	10.21	
7983.00	89.780	359.820	7481.18	-393.88	-391.69	-665.42	40°06'07.757"N	104°53'41.160"W	12.92	
8023.00†	92.265	359.361	7480.47	-353.89	-351.70	-665.71	40°06'08.152"N	104°53'41.164"W	6.32	7" CASING POINT
8030.00	92.700	359.280	7480.17	-346.89	-344.71	-665.79	40°06'08.221"N	104°53'41.165"W	6.32	
8153.00	93.440	358.700	7473.58	-224.10	-221.91	-667.96	40°06'09.435"N	104°53'41.193"W	0.76	
8243.00	92.120	358.730	7469.21	-134.24	-132.04	-669.97	40°06'10.323"N	104°53'41.219"W	1.47	
8333.00	90.800	359.520	7466.92	-44.28	-42.08	-671.35	40°06'11.212"N	104°53'41.237"W	1.71	
8512.00	90.800	1.520	7464.42	134.69	136.88	-669.72	40°06'12.981"N	104°53'41.216"W	1.12	
8692.00	88.210	1.860	7465.98	314.60	316.78	-664.41	40°06'14.758"N	104°53'41.147"W	1.45	
8871.00	88.270	2.200	7471.47	493.42	495.59	-658.08	40°06'16.525"N	104°53'41.066"W	0.19	
9051.00	89.160	2.260	7475.51	673.26	675.40	-651.07	40°06'18.302"N	104°53'40.976"W	0.50	
9231.00	90.000	2.360	7476.83	853.13	855.25	-643.82	40°06'20.080"N	104°53'40.883"W	0.47	
9411.00	90.270	359.430	7476.41	1033.10	1035.21	-641.01	40°06'21.858"N	104°53'40.847"W	1.63	
9590.00	91.010	358.530	7474.41	1212.05	1214.17	-644.19	40°06'23.626"N	104°53'40.888"W	0.65	
9770.00	89.960	357.960	7472.88	1391.93	1394.07	-649.71	40°06'25.404"N	104°53'40.959"W	0.66	
9860.00	90.180	358.580	7472.77	1481.88	1484.03	-652.42	40°06'26.293"N	104°53'40.994"W	0.73	
9950.00	90.150	358.750	7472.51	1571.85	1574.01	-654.52	40°06'27.182"N	104°53'41.021"W	0.19	
10040.00	89.380	358.450	7472.88	1661.81	1663.98	-656.72	40°06'28.072"N	104°53'41.049"W	0.92	

REFERENCE WELLPATH IDENTIFICATION			
Operator	KERR-MCGEE OIL & GAS ONSHORE LP (WA)	Slot	SLOT#17 HUNZIKER 28N-28HZ (433'FSL & 1713'FEL, SEC.28)
Area	COLORADO	Well	HUNZIKER 28N-28HZ
Field	WELD COUNTY (UTM/TRUE NORTH)	Wellbore	HUNZIKER 28N-28HZ AWP <1297>
Facility	SEC.28-T2N-R67W		

WELLPATH DATA (116 stations)										
MD [ft]	Inclination [°]	Azimuth [°]	TVD [ft]	Vert Sect [ft]	North [ft]	East [ft]	Latitude	Longitude	DLS [°/100ft]	Comments
10129.00	90.060	359.060	7473.32	1750.78	1752.95	-658.65	40°06'28.951"N	104°53'41.074"W	1.03	
10219.00	90.000	358.970	7473.27	1840.76	1842.94	-660.20	40°06'29.840"N	104°53'41.094"W	0.12	
10399.00	90.610	358.920	7472.31	2020.72	2022.91	-663.51	40°06'31.619"N	104°53'41.136"W	0.34	
10489.00	91.570	359.370	7470.60	2110.69	2112.88	-664.86	40°06'32.508"N	104°53'41.154"W	1.18	
10578.00	90.000	359.040	7469.38	2199.66	2201.86	-666.09	40°06'33.387"N	104°53'41.170"W	1.80	
10668.00	88.460	0.250	7470.59	2289.65	2291.85	-666.65	40°06'34.276"N	104°53'41.177"W	2.18	
10758.00	88.820	0.090	7472.73	2379.62	2381.82	-666.38	40°06'35.165"N	104°53'41.174"W	0.44	
10848.00	89.070	359.910	7474.38	2469.60	2471.80	-666.38	40°06'36.055"N	104°53'41.174"W	0.34	
10938.00	89.350	359.930	7475.62	2559.59	2561.80	-666.51	40°06'36.944"N	104°53'41.175"W	0.31	
11028.00	89.530	1.200	7476.50	2649.59	2651.78	-665.62	40°06'37.833"N	104°53'41.164"W	1.43	
11118.00	89.750	0.420	7477.07	2739.58	2741.77	-664.35	40°06'38.722"N	104°53'41.147"W	0.90	
11208.00	89.930	0.560	7477.32	2829.58	2831.77	-663.58	40°06'39.612"N	104°53'41.138"W	0.25	
11297.00	90.400	0.270	7477.06	2918.58	2920.77	-662.93	40°06'40.491"N	104°53'41.129"W	0.62	
11387.00	90.800	0.310	7476.12	3008.57	3010.76	-662.48	40°06'41.381"N	104°53'41.123"W	0.45	
11477.00	90.370	1.030	7475.20	3098.56	3100.75	-661.43	40°06'42.270"N	104°53'41.110"W	0.93	
11567.00	89.190	0.280	7475.55	3188.56	3190.74	-660.40	40°06'43.159"N	104°53'41.097"W	1.55	
11657.00	89.630	0.330	7476.48	3278.55	3280.73	-659.92	40°06'44.049"N	104°53'41.091"W	0.49	
11747.00	89.470	0.210	7477.18	3368.55	3370.73	-659.49	40°06'44.938"N	104°53'41.085"W	0.22	
11836.00	89.530	0.660	7477.96	3457.54	3459.72	-658.82	40°06'45.817"N	104°53'41.077"W	0.51	
11926.00	89.630	0.430	7478.62	3547.54	3549.72	-657.96	40°06'46.707"N	104°53'41.066"W	0.28	
12106.00	89.690	0.380	7479.69	3727.53	3729.71	-656.69	40°06'48.485"N	104°53'41.049"W	0.04	
12285.00	89.230	0.390	7481.37	3906.52	3908.70	-655.49	40°06'50.254"N	104°53'41.034"W	0.26	
12465.00	88.760	0.630	7484.53	4086.49	4088.66	-653.89	40°06'52.033"N	104°53'41.013"W	0.29	
12554.00	88.450	0.260	7486.70	4175.47	4177.63	-653.19	40°06'52.912"N	104°53'41.004"W	0.54	
12667.00	88.050	359.910	7490.15	4288.41	4290.58	-653.03	40°06'54.028"N	104°53'41.002"W	0.47	LAST BHI MWD+IFR SURVEYS
12722.00	88.050	359.910	7492.02	4343.38	4345.55	-653.11	40°06'54.571"N	104°53'41.003"W	0.00	PROJECTION TO BIT

HOLE & CASING SECTIONS - Ref Wellbore: HUNZIKER 28N-28HZ AWP <1297> Ref Wellpath: HUNZIKER 28N-28HZ AWP									
String/Diameter	Start MD [ft]	End MD [ft]	Interval [ft]	Start TVD [ft]	End TVD [ft]	Start N/S [ft]	Start E/W [ft]	End N/S [ft]	End E/W [ft]
13.5in Open Hole	20.00	1350.00	1330.00	20.00	1349.94	0.00	0.00	-4.51	0.86
9.625in Casing Surface	20.00	1340.00	1320.00	20.00	1339.94	0.00	0.00	-4.51	0.83
8.75in Open Hole	1350.00	8030.00	6680.00	1349.94	7480.17	-4.51	0.86	-344.71	-665.79
7in Casing Intermediate	20.00	8023.00	8003.00	20.00	7480.47	0.00	0.00	-351.70	-665.71
6.125in Open Hole	8030.00	12722.00	4692.00	7480.17	7492.02	-344.71	-665.79	4345.55	-653.11



# Actual Wellpath Report

HUNZIKER 28N-28HZ AWP  
Page 5 of 6



REFERENCE WELLPATH IDENTIFICATION			
Operator	KERR-MCGEE OIL & GAS ONSHORE LP (WA)	Slot	SLOT#17 HUNZIKER 28N-28HZ (433'FSL & 1713'FEL, SEC.28)
Area	COLORADO	Well	HUNZIKER 28N-28HZ
Field	WELD COUNTY (UTM/TRUE NORTH)	Wellbore	HUNZIKER 28N-28HZ AWB <1297>
Facility	SEC.28-T2N-R67W		

TARGETS								
Name	TVD [ft]	North [ft]	East [ft]	Grid East [US ft]	Grid North [US ft]	Latitude	Longitude	Shape
SEC.04-T1N-R67W SECTION LINES	5069.00	-1.09	165.34	1670673.34	14564341.34	40°06'11.617"N	104°53'30.469"W	polygon
SEC.28-T2N-R67W SECTION LINES	5069.00	-1.09	165.34	1670673.34	14564341.34	40°06'11.617"N	104°53'30.469"W	polygon
SEC.33-T2N-R67W SECTION LINES	5069.00	-1.09	165.34	1670673.34	14564341.34	40°06'11.617"N	104°53'30.469"W	polygon
HUNZIKER 28N-28HZ BHL ON PLAT REV-1 (460'FNL & 2370'FEL, SEC.28)	7479.00	4371.17	-643.56	1669859.48	14568710.86	40°06'54.824"N	104°53'40.880"W	point
HUNZIKER 28N-28HZ LANDBOX	7479.00	0.00	0.00	1670508.07	14564342.23	40°06'11.628"N	104°53'32.597"W	polygon

WELLPATH COMPOSITION - Ref Wellbore: HUNZIKER 28N-28HZ AWB <1297>					Ref Wellpath: HUNZIKER 28N-28HZ AWP
Start MD	End MD	Positional Uncertainty Model		Log Name/Comment	Wellbore
[ft]	[ft]				
20.00	1297.00	ISCWSA MWD, Rev. 2 (Standard)		CATHEDRAL MWD SURVEYS 13.5" <97-1297>	HUNZIKER 28N-28HZ AWB <1297>
1297.00	7983.00	Custom APC ISCWSA REV 2 MWD+IFR1+SC (approximation)		BHI MWD+IFR SURVEYS 8.75" <1374-7983>	HUNZIKER 28N-28HZ AWB <1297>
7983.00	12667.00	Custom APC ISCWSA REV 2 MWD+IFR1+SC (approximation)		BHI MWD+IFR SURVEYS 6.125" <8030-12667>	HUNZIKER 28N-28HZ AWB <1297>
12667.00	12722.00	Blind Drilling (std)		Projection to bit	HUNZIKER 28N-28HZ AWB <1297>

REFERENCE WELLPATH IDENTIFICATION			
Operator	KERR-MCGEE OIL & GAS ONSHORE LP (WA)	Slot	SLOT#17 HUNZIKER 28N-28HZ (433'FSL & 1713'FEL, SEC.28)
Area	COLORADO	Well	HUNZIKER 28N-28HZ
Field	WELD COUNTY (UTM/TRUE NORTH)	Wellbore	HUNZIKER 28N-28HZ AWB <1297>
Facility	SEC.28-T2N-R67W		

WELLPATH COMMENTS					
MD [ft]	Inclination [°]	Azimuth [°]	TVD [ft]	Comment	
97.00	0.100	278.400	97.00	BEGIN MWD SURVEYS	
1297.00	0.400	73.600	1296.94	TIE-ONTO MWD SURVEYS	
1374.00	0.090	116.580	1373.94	BEGIN BHI MWD+IFR SURVEYS	
8023.00	92.265	359.361	7480.47	7" CASING POINT	
12667.00	88.050	359.910	7490.15	LAST BHI MWD+IFR SURVEYS	
12722.00	88.050	359.910	7492.02	PROJECTION TO BIT	