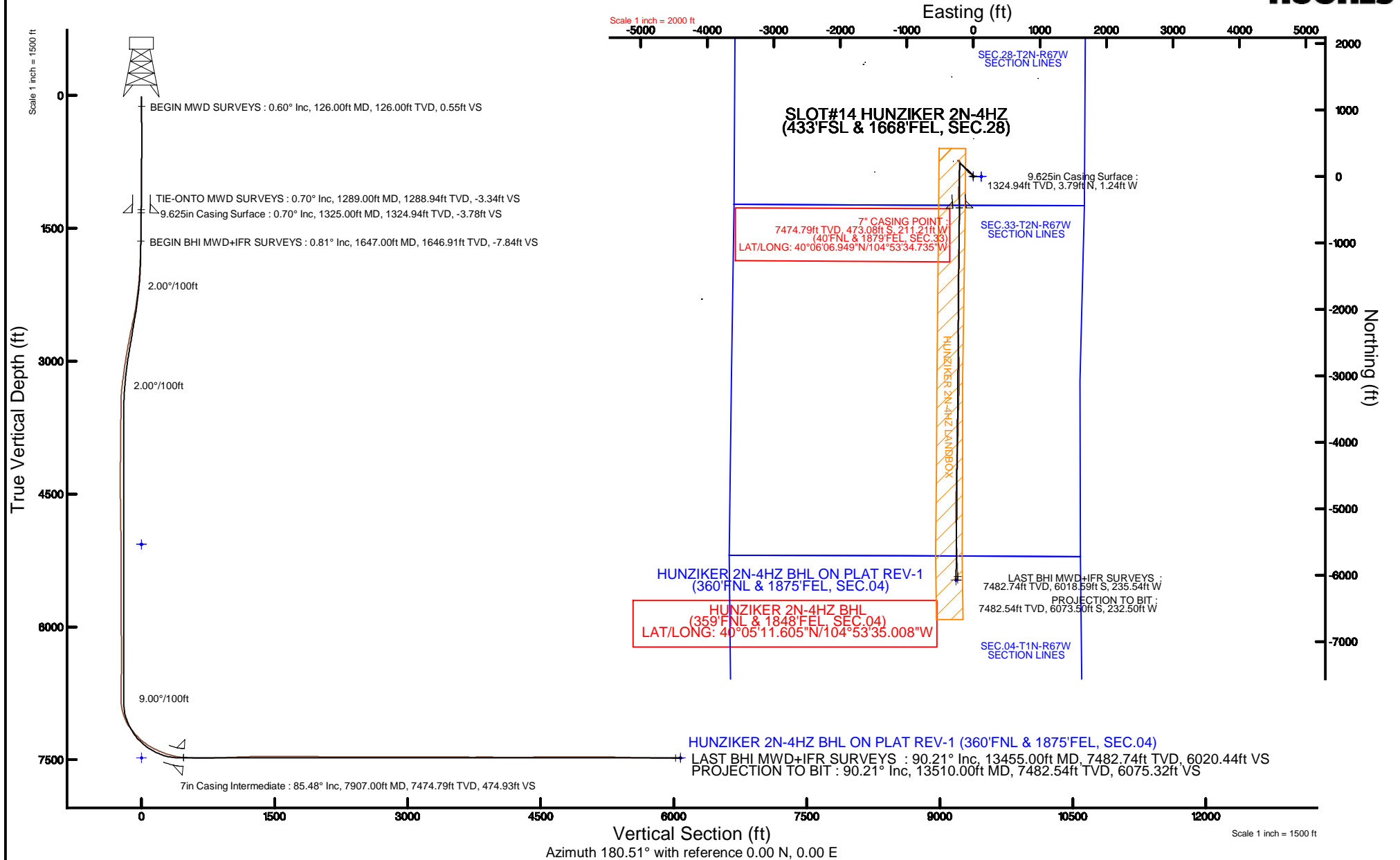


KERR-MCGEE OIL & GAS ONSHORE LP (WA)

Location: COLORADO Slot: SLOT#14 HUNZIKER 2N-4HZ (433'FSL & 1668'FEL, SEC.28)
 Field: WELD COUNTY (UTM/TRUE NORTH) Well: HUNZIKER 2N-4HZ
 Facility: SEC.28-T2N-R67W Wellbore: HUNZIKER 2N-4HZ PWB

Plot reference wellpath is HUNZIKER 2N-4HZ (REV-B.0) PWB

True vertical depths are referenced to PRECISION 460 (20'KB) (RKB)	Grid System: NAD83 / UTM Zone 13 North, US feet
Measured depths are referenced to PRECISION 460 (20'KB) (RKB)	North Reference: True north
PRECISION 460 (20'KB) (RKB) to Mean Sea Level: 5069 feet	Scale: True distance
Mean Sea Level to Mud line (At Slot: SLOT#14 HUNZIKER 2N-4HZ (433'FSL & 1668'FEL, SEC.28)): 0 feet	Depths are in feet
Coordinates are in feet referenced to Slot	Created by: amarc on 03/Jun/2015



REFERENCE WELLPATH IDENTIFICATION			
Operator	KERR-MCGEE OIL & GAS ONSHORE LP (WA)	Slot	SLOT#14 HUNZIKER 2N-4HZ (433'FSL & 1668'FEL, SEC.28)
Area	COLORADO	Well	HUNZIKER 2N-4HZ
Field	WELD COUNTY (UTM/TRUE NORTH)	Wellbore	HUNZIKER 2N-4HZ AWB <13510>
Facility	SEC.28-T2N-R67W		

REPORT SETUP INFORMATION			
Projection System	NAD83 / UTM Zone 13 North, US feet	Software System	WellArchitect® 4.0.0
North Reference	True	User	Amarcar
Scale	0.999601	Report Generated	03/Jun/2015 at 11:44
Convergence at slot	0.07° East	Database/Source file	KERR MCGEE UTM/HUNZIKER_2N-4HZ_AWB__13510_.xml

WELLPATH LOCATION						
	Local coordinates		Grid coordinates		Geographic coordinates	
	North[ft]	East[ft]	Easting[US ft]	Northing[US ft]	Latitude	Longitude
Slot Location	-4193.40	-1020.20	1670553.12	14564341.88	40°06'11.624"N	104°53'32.017"W
Facility Reference Pt			1671567.66	14568534.88	40°06'53.064"N	104°53'18.888"W
Field Reference Pt			1698235.31	14552047.82	40°04'09.600"N	104°47'36.000"W

WELLPATH DATUM			
Calculation method	Minimum curvature	PRECISION 460 (20'KB) (RKB) to Facility Vertical Datum	5069.00ft
Horizontal Reference Pt	Slot	PRECISION 460 (20'KB) (RKB) to Mean Sea Level	5069.00ft
Vertical Reference Pt	PRECISION 460 (20'KB) (RKB)	PRECISION 460 (20'KB) (RKB) to Mud Line at Slot (SLOT#14 HUNZIKER 2N-4HZ (433'FSL & 1668'FEL, SEC.28))	5069.00ft
MD Reference Pt	PRECISION 460 (20'KB) (RKB)	Section Origin	N 0.00, E 0.00 ft
Field Vertical Reference	Mean Sea Level	Section Azimuth	180.51°

REFERENCE WELLPATH IDENTIFICATION			
Operator	KERR-MCGEE OIL & GAS ONSHORE LP (WA)	Slot	SLOT#14 HUNZIKER 2N-4HZ (433'FSL & 1668'FEL, SEC.28)
Area	COLORADO	Well	HUNZIKER 2N-4HZ
Field	WELD COUNTY (UTM/TRUE NORTH)	Wellbore	HUNZIKER 2N-4HZ AWP <13510>
Facility	SEC.28-T2N-R67W		

WELLPATH DATA (120 stations) † = interpolated/extrapolated station										
MD [ft]	Inclination [°]	Azimuth [°]	TVD [ft]	Vert Sect [ft]	North [ft]	East [ft]	Latitude	Longitude	DLS [°/100ft]	Comments
0.00†	0.000	172.100	0.00	0.00	0.00	0.00	40°06'11.624"N	104°53'32.017"W	0.00	
20.00	0.000	172.100	20.00	0.00	0.00	0.00	40°06'11.624"N	104°53'32.017"W	0.00	
126.00	0.600	172.100	126.00	0.55	-0.55	0.08	40°06'11.619"N	104°53'32.016"W	0.57	BEGIN MWD SURVEYS
213.00	0.300	150.800	213.00	1.20	-1.20	0.25	40°06'11.612"N	104°53'32.014"W	0.39	
301.00	0.500	178.900	300.99	1.78	-1.78	0.37	40°06'11.606"N	104°53'32.012"W	0.31	
390.00	0.400	147.800	389.99	2.43	-2.44	0.54	40°06'11.600"N	104°53'32.010"W	0.29	
479.00	0.400	165.700	478.99	2.99	-3.00	0.79	40°06'11.594"N	104°53'32.007"W	0.14	
576.00	0.400	326.700	575.99	3.04	-3.04	0.68	40°06'11.594"N	104°53'32.008"W	0.81	
670.00	0.900	314.400	669.98	2.25	-2.25	-0.02	40°06'11.602"N	104°53'32.017"W	0.55	
765.00	1.200	343.000	764.97	0.79	-0.78	-0.85	40°06'11.616"N	104°53'32.028"W	0.63	
861.00	0.700	346.300	860.95	-0.74	0.75	-1.28	40°06'11.631"N	104°53'32.033"W	0.52	
957.00	0.100	308.000	956.95	-1.36	1.37	-1.49	40°06'11.638"N	104°53'32.036"W	0.65	
1050.00	0.100	349.600	1049.95	-1.49	1.50	-1.57	40°06'11.639"N	104°53'32.037"W	0.08	
1146.00	0.600	6.300	1145.95	-2.07	2.08	-1.52	40°06'11.645"N	104°53'32.037"W	0.53	
1239.00	0.400	11.200	1238.94	-2.87	2.89	-1.41	40°06'11.653"N	104°53'32.035"W	0.22	
1289.00	0.700	11.500	1288.94	-3.34	3.36	-1.31	40°06'11.657"N	104°53'32.034"W	0.60	TIE-ONTO MWD SURVEYS
1647.00	0.810	338.670	1646.91	-7.84	7.86	-1.80	40°06'11.702"N	104°53'32.040"W	0.12	BEGIN BHI MWD+IFR SURVEYS
1827.00	3.220	308.320	1826.79	-12.12	12.18	-6.23	40°06'11.744"N	104°53'32.097"W	1.42	
1917.00	4.710	307.770	1916.57	-15.91	16.01	-11.13	40°06'11.782"N	104°53'32.160"W	1.66	
2007.00	6.300	308.620	2006.15	-21.19	21.35	-17.91	40°06'11.835"N	104°53'32.248"W	1.77	
2097.00	7.890	308.690	2095.46	-28.06	28.30	-26.59	40°06'11.904"N	104°53'32.359"W	1.77	
2186.00	10.450	310.960	2183.32	-37.08	37.41	-37.46	40°06'11.994"N	104°53'32.499"W	2.90	
2276.00	11.780	307.850	2271.63	-47.94	48.40	-50.88	40°06'12.102"N	104°53'32.672"W	1.62	
2366.00	13.060	306.830	2359.52	-59.54	60.13	-66.27	40°06'12.218"N	104°53'32.870"W	1.44	
2456.00	14.480	318.130	2446.95	-73.88	74.61	-81.92	40°06'12.361"N	104°53'33.071"W	3.37	
2546.00	16.090	322.030	2533.76	-91.96	92.82	-97.11	40°06'12.541"N	104°53'33.267"W	2.12	
2636.00	15.390	321.730	2620.39	-111.03	112.03	-112.18	40°06'12.731"N	104°53'33.461"W	0.78	
2726.00	13.920	320.160	2707.46	-128.59	129.72	-126.51	40°06'12.906"N	104°53'33.645"W	1.69	
2816.00	14.650	317.170	2794.68	-145.12	146.38	-141.18	40°06'13.071"N	104°53'33.834"W	1.15	
2905.00	13.630	316.130	2880.98	-160.80	162.19	-156.10	40°06'13.227"N	104°53'34.026"W	1.18	
2995.00	12.910	315.580	2968.58	-175.50	177.02	-170.49	40°06'13.373"N	104°53'34.211"W	0.81	
3085.00	12.270	313.540	3056.41	-189.15	190.78	-184.46	40°06'13.509"N	104°53'34.391"W	0.87	
3175.00	9.700	324.880	3144.77	-201.84	203.58	-195.75	40°06'13.636"N	104°53'34.536"W	3.72	
3265.00	8.990	324.950	3233.57	-213.72	215.54	-204.16	40°06'13.754"N	104°53'34.644"W	0.79	
3355.00	6.280	326.830	3322.76	-223.54	225.42	-210.89	40°06'13.852"N	104°53'34.731"W	3.02	
3445.00	3.090	304.870	3412.46	-229.01	230.92	-215.57	40°06'13.906"N	104°53'34.791"W	4.00	
3535.00	0.800	345.650	3502.40	-230.98	232.92	-217.72	40°06'13.926"N	104°53'34.819"W	2.82	
3894.00	1.450	291.520	3861.34	-235.04	237.01	-222.57	40°06'13.966"N	104°53'34.881"W	0.33	
4253.00	1.350	301.770	4220.23	-238.86	240.91	-230.39	40°06'14.005"N	104°53'34.982"W	0.07	
4343.00	0.870	294.820	4310.22	-239.69	241.75	-231.91	40°06'14.013"N	104°53'35.001"W	0.55	
4433.00	1.700	108.380	4400.21	-239.56	241.62	-231.26	40°06'14.012"N	104°53'34.993"W	2.85	
4792.00	1.120	147.430	4759.10	-234.99	236.98	-224.32	40°06'13.966"N	104°53'34.904"W	0.30	
4972.00	0.770	137.670	4939.08	-232.63	234.61	-222.56	40°06'13.942"N	104°53'34.881"W	0.21	
5152.00	0.860	105.640	5119.06	-231.39	233.35	-220.44	40°06'13.930"N	104°53'34.854"W	0.25	
5511.00	0.300	112.440	5478.04	-230.33	232.26	-216.98	40°06'13.919"N	104°53'34.809"W	0.16	

Actual Wellpath Report

HUNZIKER 2N-4HZ AWP

Page 3 of 6

REFERENCE WELLPATH IDENTIFICATION

Operator	KERR-MCGEE OIL & GAS ONSHORE LP (WA)	Slot	SLOT#14 HUNZIKER 2N-4HZ (433'FSL & 1668'FEL, SEC.28)
Area	COLORADO	Well	HUNZIKER 2N-4HZ
Field	WELD COUNTY (UTM/TRUE NORTH)	Wellbore	HUNZIKER 2N-4HZ AWP <13510>
Facility	SEC.28-T2N-R67W		

WELLPATH DATA (120 stations) † = interpolated/extrapolated station

MD [ft]	Inclination [°]	Azimuth [°]	TVD [ft]	Vert Sect [ft]	North [ft]	East [ft]	Latitude	Longitude	DLS [°/100ft]	Comments
5870.00	0.120	141.050	5837.04	-229.69	231.61	-215.87	40°06'13.913"N	104°53'34.795"W	0.06	
6140.00	0.740	177.240	6107.03	-227.73	229.65	-215.61	40°06'13.893"N	104°53'34.792"W	0.24	
6320.00	1.020	182.190	6287.01	-224.97	226.89	-215.62	40°06'13.866"N	104°53'34.792"W	0.16	
6410.00	1.330	38.390	6377.00	-224.99	226.91	-215.00	40°06'13.866"N	104°53'34.784"W	2.48	
6588.00	1.180	22.930	6554.96	-228.32	230.21	-213.00	40°06'13.899"N	104°53'34.758"W	0.21	
6768.00	0.840	17.110	6734.93	-231.30	233.18	-211.89	40°06'13.928"N	104°53'34.744"W	0.20	
6858.00	1.260	158.770	6824.93	-231.01	232.89	-211.34	40°06'13.925"N	104°53'34.737"W	2.21	
6948.00	10.500	177.770	6914.36	-221.88	223.75	-210.66	40°06'13.835"N	104°53'34.728"W	10.35	
7037.00	17.910	169.820	7000.58	-200.30	202.15	-207.92	40°06'13.622"N	104°53'34.693"W	8.59	
7127.00	28.230	181.120	7083.31	-165.31	167.13	-205.89	40°06'13.276"N	104°53'34.667"W	12.43	
7217.00	39.670	185.370	7157.86	-115.22	117.08	-209.00	40°06'12.781"N	104°53'34.707"W	12.97	
7307.00	42.450	182.480	7225.72	-56.23	58.12	-213.01	40°06'12.198"N	104°53'34.758"W	3.74	
7397.00	50.160	179.480	7287.85	8.78	-6.88	-214.01	40°06'11.556"N	104°53'34.771"W	8.90	
7487.00	57.840	181.740	7340.72	81.53	-79.63	-214.85	40°06'10.837"N	104°53'34.782"W	8.77	
7576.00	64.190	184.160	7383.83	159.26	-157.33	-218.91	40°06'10.069"N	104°53'34.834"W	7.52	
7666.00	69.610	180.560	7419.14	241.95	-239.99	-222.26	40°06'09.252"N	104°53'34.877"W	7.06	
7756.00	72.570	176.040	7448.31	326.99	-325.06	-219.71	40°06'08.412"N	104°53'34.844"W	5.78	
7846.00	81.400	176.380	7468.56	414.35	-412.47	-213.92	40°06'07.548"N	104°53'34.770"W	9.82	
7870.00	84.410	177.250	7471.53	438.11	-436.25	-212.60	40°06'07.313"N	104°53'34.753"W	13.05	
7907.00†	85.483	178.428	7474.79	474.93	-473.08	-211.21	40°06'06.949"N	104°53'34.735"W	4.30	7" CASING POINT
7931.00	86.180	179.190	7476.53	498.85	-497.01	-210.71	40°06'06.712"N	104°53'34.729"W	4.30	
8065.00	89.100	180.560	7482.05	632.71	-630.88	-210.42	40°06'05.390"N	104°53'34.725"W	2.41	
8155.00	90.490	181.350	7482.37	722.71	-720.86	-211.92	40°06'04.500"N	104°53'34.744"W	1.78	
8245.00	91.590	180.920	7480.74	812.69	-810.83	-213.70	40°06'03.611"N	104°53'34.767"W	1.31	
8335.00	92.150	180.280	7477.80	902.64	-900.77	-214.65	40°06'02.722"N	104°53'34.779"W	0.94	
8425.00	92.540	180.980	7474.12	992.56	-990.69	-215.63	40°06'01.834"N	104°53'34.792"W	0.89	
8514.00	92.520	182.260	7470.19	1081.46	-1079.57	-218.15	40°06'00.956"N	104°53'34.824"W	1.44	
8604.00	91.750	182.320	7466.84	1171.35	-1169.43	-221.74	40°06'00.067"N	104°53'34.870"W	0.86	
8694.00	91.170	180.690	7464.54	1261.30	-1259.37	-224.10	40°05'59.179"N	104°53'34.901"W	1.92	
8784.00	91.130	179.880	7462.74	1351.28	-1349.35	-224.55	40°05'58.290"N	104°53'34.907"W	0.90	
8874.00	90.060	180.470	7461.80	1441.27	-1439.34	-224.83	40°05'57.400"N	104°53'34.910"W	1.36	
8963.00	90.150	181.520	7461.64	1530.27	-1528.33	-226.37	40°05'56.521"N	104°53'34.930"W	1.18	
9053.00	89.840	181.170	7461.65	1620.26	-1618.30	-228.48	40°05'55.632"N	104°53'34.957"W	0.52	
9143.00	90.610	180.710	7461.29	1710.26	-1708.29	-229.96	40°05'54.742"N	104°53'34.976"W	1.00	
9233.00	89.960	179.290	7460.85	1800.25	-1798.28	-229.96	40°05'53.853"N	104°53'34.976"W	1.74	
9323.00	88.030	179.420	7462.42	1890.21	-1888.26	-228.95	40°05'52.964"N	104°53'34.963"W	2.15	
9413.00	88.490	179.030	7465.16	1980.15	-1978.21	-227.73	40°05'52.075"N	104°53'34.947"W	0.67	
9503.00	89.190	178.560	7466.98	2070.09	-2068.17	-225.84	40°05'51.186"N	104°53'34.923"W	0.94	
9593.00	90.800	180.450	7466.99	2160.07	-2158.16	-225.06	40°05'50.297"N	104°53'34.913"W	2.76	
9682.00	90.330	180.300	7466.11	2249.06	-2247.15	-225.64	40°05'49.417"N	104°53'34.921"W	0.55	
9772.00	89.600	179.600	7466.16	2339.06	-2337.15	-225.57	40°05'48.528"N	104°53'34.920"W	1.12	
9862.00	89.810	179.390	7466.63	2429.04	-2427.15	-224.77	40°05'47.639"N	104°53'34.909"W	0.33	
9952.00	90.000	179.230	7466.78	2519.02	-2517.14	-223.69	40°05'46.749"N	104°53'34.895"W	0.28	
10132.00	90.330	177.960	7466.26	2698.92	-2697.08	-219.28	40°05'44.971"N	104°53'34.839"W	0.73	
10221.00	90.270	179.080	7465.79	2787.86	-2786.05	-216.98	40°05'44.092"N	104°53'34.809"W	1.26	

REFERENCE WELLPATH IDENTIFICATION

Operator	KERR-MCGEE OIL & GAS ONSHORE LP (WA)	Slot	SLOT#14 HUNZIKER 2N-4HZ (433'FSL & 1668'FEL, SEC.28)
Area	COLORADO	Well	HUNZIKER 2N-4HZ
Field	WELD COUNTY (UTM/TRUE NORTH)	Wellbore	HUNZIKER 2N-4HZ AWP <13510>
Facility	SEC.28-T2N-R67W		

WELLPATH DATA (120 stations)

MD [ft]	Inclination [°]	Azimuth [°]	TVD [ft]	Vert Sect [ft]	North [ft]	East [ft]	Latitude	Longitude	DLS [°/100ft]	Comments
10311.00	89.100	179.130	7466.29	2877.83	-2876.04	-215.57	40°05'43.203"N	104°53'34.791"W	1.30	
10401.00	90.330	179.790	7466.73	2967.81	-2966.03	-214.72	40°05'42.313"N	104°53'34.780"W	1.55	
10491.00	90.520	179.770	7466.07	3057.80	-3056.03	-214.38	40°05'41.424"N	104°53'34.775"W	0.21	
10580.00	89.810	180.630	7465.81	3146.80	-3145.02	-214.69	40°05'40.544"N	104°53'34.779"W	1.25	
10670.00	89.100	182.080	7466.67	3236.78	-3234.99	-216.82	40°05'39.655"N	104°53'34.807"W	1.79	
10760.00	89.560	181.730	7467.72	3326.75	-3324.93	-219.81	40°05'38.766"N	104°53'34.845"W	0.64	
10850.00	89.530	181.940	7468.43	3416.72	-3414.89	-222.69	40°05'37.878"N	104°53'34.882"W	0.24	
10940.00	89.470	181.120	7469.22	3506.70	-3504.85	-225.09	40°05'36.989"N	104°53'34.913"W	0.91	
11030.00	89.600	180.550	7469.95	3596.70	-3594.84	-226.40	40°05'36.099"N	104°53'34.930"W	0.65	
11120.00	89.500	179.940	7470.66	3686.69	-3684.83	-226.79	40°05'35.210"N	104°53'34.935"W	0.69	
11210.00	90.520	180.940	7470.64	3776.69	-3774.83	-227.48	40°05'34.321"N	104°53'34.944"W	1.59	
11299.00	90.090	182.120	7470.17	3865.68	-3863.79	-229.86	40°05'33.441"N	104°53'34.975"W	1.41	
11389.00	89.290	182.780	7470.65	3955.62	-3953.71	-233.70	40°05'32.553"N	104°53'35.024"W	1.15	
11479.00	89.560	182.980	7471.56	4045.54	-4043.59	-238.22	40°05'31.665"N	104°53'35.082"W	0.37	
11569.00	89.870	182.890	7472.00	4135.46	-4133.47	-242.83	40°05'30.776"N	104°53'35.141"W	0.36	
11659.00	90.210	182.760	7471.94	4225.38	-4223.36	-247.27	40°05'29.888"N	104°53'35.199"W	0.40	
11749.00	90.330	181.390	7471.52	4315.35	-4313.30	-250.53	40°05'28.999"N	104°53'35.240"W	1.53	
11838.00	90.640	180.690	7470.76	4404.34	-4402.28	-252.14	40°05'28.120"N	104°53'35.261"W	0.86	
11928.00	91.070	180.600	7469.42	4494.33	-4492.26	-253.16	40°05'27.231"N	104°53'35.274"W	0.49	
12108.00	89.560	181.660	7468.43	4674.31	-4672.22	-256.71	40°05'25.452"N	104°53'35.320"W	1.02	
12197.00	89.600	181.360	7469.08	4763.29	-4761.19	-259.05	40°05'24.573"N	104°53'35.350"W	0.34	
12377.00	89.720	180.100	7470.15	4943.28	-4941.16	-261.34	40°05'22.795"N	104°53'35.380"W	0.70	
12557.00	90.180	179.430	7470.31	5123.27	-5121.16	-260.61	40°05'21.016"N	104°53'35.370"W	0.45	
12646.00	90.330	178.230	7469.91	5212.23	-5210.14	-258.79	40°05'20.137"N	104°53'35.347"W	1.36	
12826.00	88.330	179.320	7472.02	5392.12	-5390.07	-254.94	40°05'18.358"N	104°53'35.297"W	1.27	
13006.00	88.550	179.050	7476.92	5572.00	-5569.99	-252.38	40°05'16.580"N	104°53'35.264"W	0.19	
13096.00	88.730	178.600	7479.05	5661.94	-5659.94	-250.54	40°05'15.692"N	104°53'35.240"W	0.54	
13275.00	89.350	177.500	7482.05	5840.75	-5838.81	-244.45	40°05'13.924"N	104°53'35.162"W	0.71	
13455.00	90.210	176.830	7482.74	6020.44	-6018.59	-235.54	40°05'12.147"N	104°53'35.047"W	0.61	LAST BHI MWD+IFR SURVEYS
13510.00	90.210	176.830	7482.54	6075.32	-6073.50	-232.50	40°05'11.605"N	104°53'35.008"W	0.00	PROJECTION TO BIT

HOLE & CASING SECTIONS - Ref Wellbore: HUNZIKER 2N-4HZ AWP <13510> Ref Wellpath: HUNZIKER 2N-4HZ AWP

String/Diameter	Start MD [ft]	End MD [ft]	Interval [ft]	Start TVD [ft]	End TVD [ft]	Start N/S [ft]	Start E/W [ft]	End N/S [ft]	End E/W [ft]
13.5in Open Hole	20.00	1334.00	1314.00	20.00	1333.94	0.00	0.00	3.90	-1.23
9.625in Casing Surface	20.00	1325.00	1305.00	20.00	1324.94	0.00	0.00	3.79	-1.24
8.75in Open Hole	1334.00	7919.00	6585.00	1333.94	7475.70	3.90	-1.23	-485.04	-210.92
7in Casing Intermediate	20.00	7907.00	7887.00	20.00	7474.79	0.00	0.00	-473.08	-211.21
6.125in Open Hole	7919.00	13510.00	5591.00	7475.70	7482.54	-485.04	-210.92	-6073.50	-232.50

Actual Wellpath Report

HUNZIKER 2N-4HZ AWP

Page 5 of 6

REFERENCE WELLPATH IDENTIFICATION

Operator	KERR-MCGEE OIL & GAS ONSHORE LP (WA)	Slot	SLOT#14 HUNZIKER 2N-4HZ (433'FSL & 1668'FEL, SEC.28)
Area	COLORADO	Well	HUNZIKER 2N-4HZ
Field	WELD COUNTY (UTM/TRUE NORTH)	Wellbore	HUNZIKER 2N-4HZ AWB <13510>
Facility	SEC.28-T2N-R67W		

TARGETS

Name	TVD [ft]	North [ft]	East [ft]	Grid East [US ft]	Grid North [US ft]	Latitude	Longitude	Shape
SEC.04-T1N-R67W SECTION LINES	5069.00	-0.68	120.27	1670673.34	14564341.34	40°06'11.617"N	104°53'30.469"W	polygon
SEC.28-T2N-R67W SECTION LINES	5069.00	-0.68	120.27	1670673.34	14564341.34	40°06'11.617"N	104°53'30.469"W	polygon
SEC.33-T2N-R67W SECTION LINES	5069.00	-0.68	120.27	1670673.34	14564341.34	40°06'11.617"N	104°53'30.469"W	polygon
HUNZIKER 2N-4HZ BHL ON PLAT REV-1 (360'FNL & 1875'FEL, SEC.04)	7479.00	-6074.18	-259.99	1670300.59	14558269.83	40°05'11.598"N	104°53'35.362"W	point
HUNZIKER 2N-4HZ LANDBOX	7479.00	0.00	0.00	1670553.12	14564341.88	40°06'11.624"N	104°53'32.017"W	polygon

WELLPATH COMPOSITION - Ref Wellbore: HUNZIKER 2N-4HZ AWB <13510> Ref Wellpath: HUNZIKER 2N-4HZ AWP

Start MD [ft]	End MD [ft]	Positional Uncertainty Model	Log Name/Comment	Wellbore
20.00	1289.00	ISCWSA MWD, Rev. 2 (Standard)	CATHEDRAL MWD SURVEYS 13.5" <126-1289>	HUNZIKER 2N-4HZ AWB <13510>
1289.00	7931.00	Custom APC ISCWSA REV 2 MWD+IFR1+SC (approximation)	BHI MWD+FIR SURVEYS 8.75" <1647-7931>	HUNZIKER 2N-4HZ AWB <13510>
7931.00	13455.00	Custom APC ISCWSA REV 2 MWD+IFR1+SC (approximation)	BHI MWD+IFR SURVEYS 6.125" <8065-13455>	HUNZIKER 2N-4HZ AWB <13510>
13455.00	13510.00	Blind Drilling (std)	Projection to bit	HUNZIKER 2N-4HZ AWB <13510>



Actual Wellpath Report

HUNZIKER 2N-4HZ AWP
Page 6 of 6



REFERENCE WELLPATH IDENTIFICATION			
Operator	KERR-MCGEE OIL & GAS ONSHORE LP (WA)	Slot	SLOT#14 HUNZIKER 2N-4HZ (433'FSL & 1668'FEL, SEC.28)
Area	COLORADO	Well	HUNZIKER 2N-4HZ
Field	WELD COUNTY (UTM/TRUE NORTH)	Wellbore	HUNZIKER 2N-4HZ AWP <13510>
Facility	SEC.28-T2N-R67W		

WELLPATH COMMENTS					
MD [ft]	Inclination [°]	Azimuth [°]	TVD [ft]	Comment	
126.00	0.600	172.100	126.00	BEGIN MWD SURVEYS	
1289.00	0.700	11.500	1288.94	TIE-ONTO MWD SURVEYS	
1647.00	0.810	338.670	1646.91	BEGIN BHI MWD+IFR SURVEYS	
7907.00	85.483	178.428	7474.79	7" CASING POINT	
13455.00	90.210	176.830	7482.74	LAST BHI MWD+IFR SURVEYS	
13510.00	90.210	176.830	7482.54	PROJECTION TO BIT	