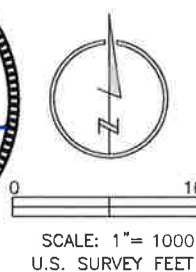


### LAND SURVEYOR'S CERTIFICATION

LAMP, RYNEARSON & ASSOCIATES, INC., OF FT. COLLINS, COLORADO HAS, IN ACCORDANCE WITH A REQUEST FROM DUSTIN DYK FOR EXTRACTION OIL AND GAS, DETERMINED THE SURFACE LOCATION OF THE WELL DESIGNATED AS MT-MAPLEWOOD C2-8-7 TO BE 892' FROM THE NORTH LINE AND 1752' FROM THE WEST LINE OF SECTION 9 TOWNSHIP 5 NORTH, RANGE 65 WEST OF THE 6TH P.M., WELD COUNTY, COLORADO.

**FRANK A. KOHL**  
COLORADO PLS 37067  
DATE OF SURVEY: 3/15/2012 (SECTION CONTROL)  
DATE OF SURVEY: 7/09/2014 (WELL LOCATION)

**COLORADO LICENSED**  
**FRANK A. KOHL**  
**37067**  
**3/27/2015**  
**PROFESSIONAL LAND SURVEYOR**

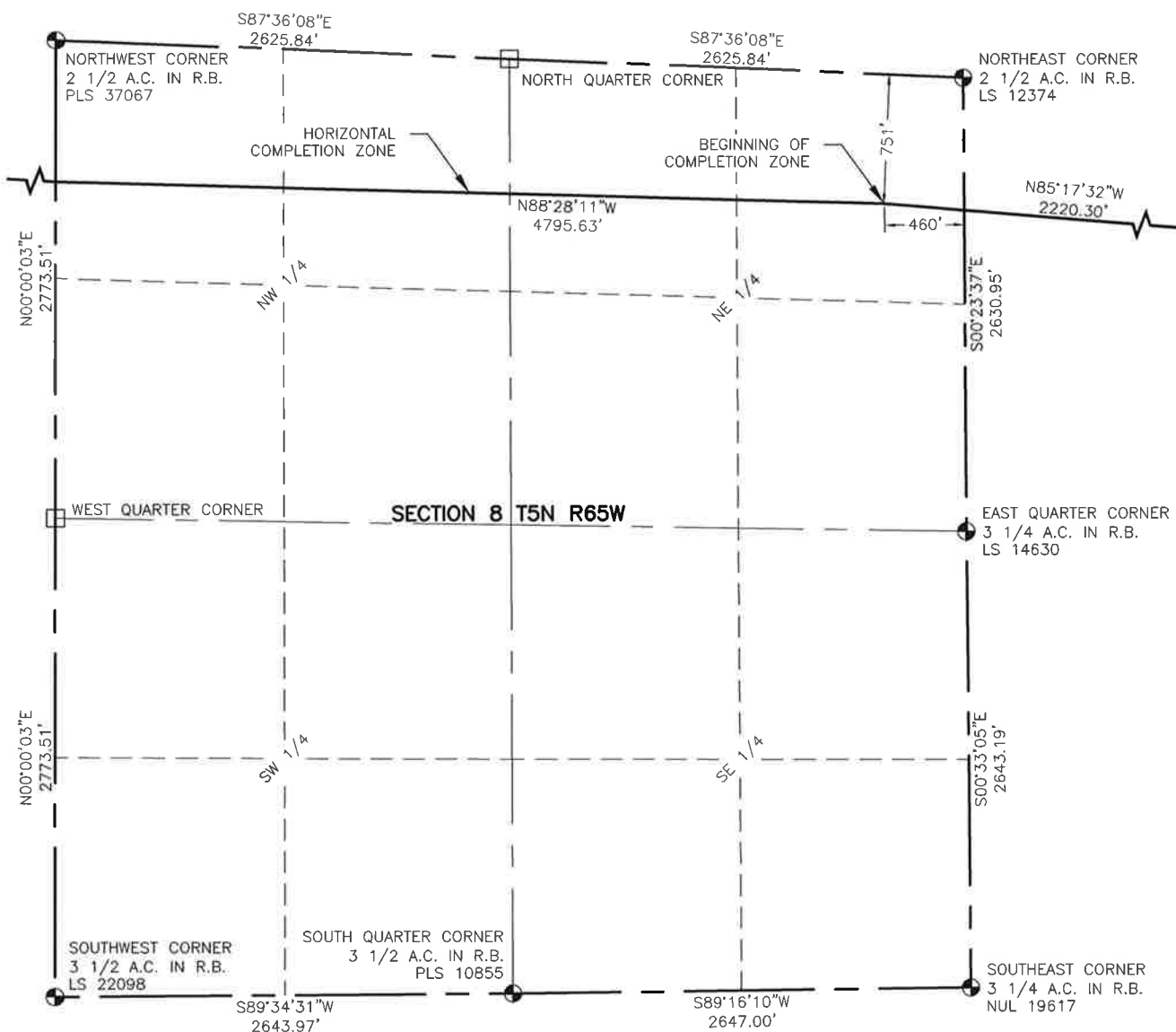


**LAMP RYNEARSON & ASSOCIATES**

4715 Innovation Drive 970.226.0342 | P  
Fort Collins, CO 80525 970.226.0879 | F  
www.LRA-inc.com

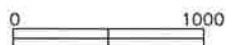
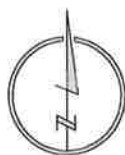
Proposed Well Location Exhibit  
MT-MAPLEWOOD C2-8-7  
1 OF 3

drawn by	date	cogcc id	project - task number	book and page	surface - location
JPM	3/26/15		0210035.00-502	MR01/MR02	NE/4,NW/4, SEC 9 T5N R65W
path\filename P:\_Engineering\0210035 MRI Midtown\DRAWINGS\EXHIBITS\0210035EXWP-00ROC.dwg					



#### NOTES:

1. DISTANCES ARE MEASURED PERPENDICULAR TO NEAREST SECTION LINE AND ARE SHOWN ON THE SAME SIDE OF THE SECTION LINE WHERE THE WELL IS LOCATED.
2. THIS MAP DOES NOT REPRESENT A MONUMENTED BOUNDARY SURVEY. SIXTEENTH CORNER LOCATIONS ARE COMPUTED, UNLESS OTHERWISE NOTED.
3. BOTTOM HOLE LOCATIONS AND HORIZONTAL COMPLETION ZONE PROVIDED BY OTHERS.



SCALE: 1" = 1000'  
U.S. SURVEY FEET

#### LEGEND

- |      |  |   |                                  |
|------|--|---|----------------------------------|
| ■    | COMPUTED ALIQUOT CORNER FROM GLO RECORDS | ● | ALIQUOT CORNER                   |
| A.C. | ALUMINUM CAP                             | ⊙ | BOTTOM HOLE                      |
| R.B. | RANGE BOX                                | ○ | PROPOSED WELL                    |
|      |  | □ | COMPUTED ALIQUOT CORNER LOCATION |

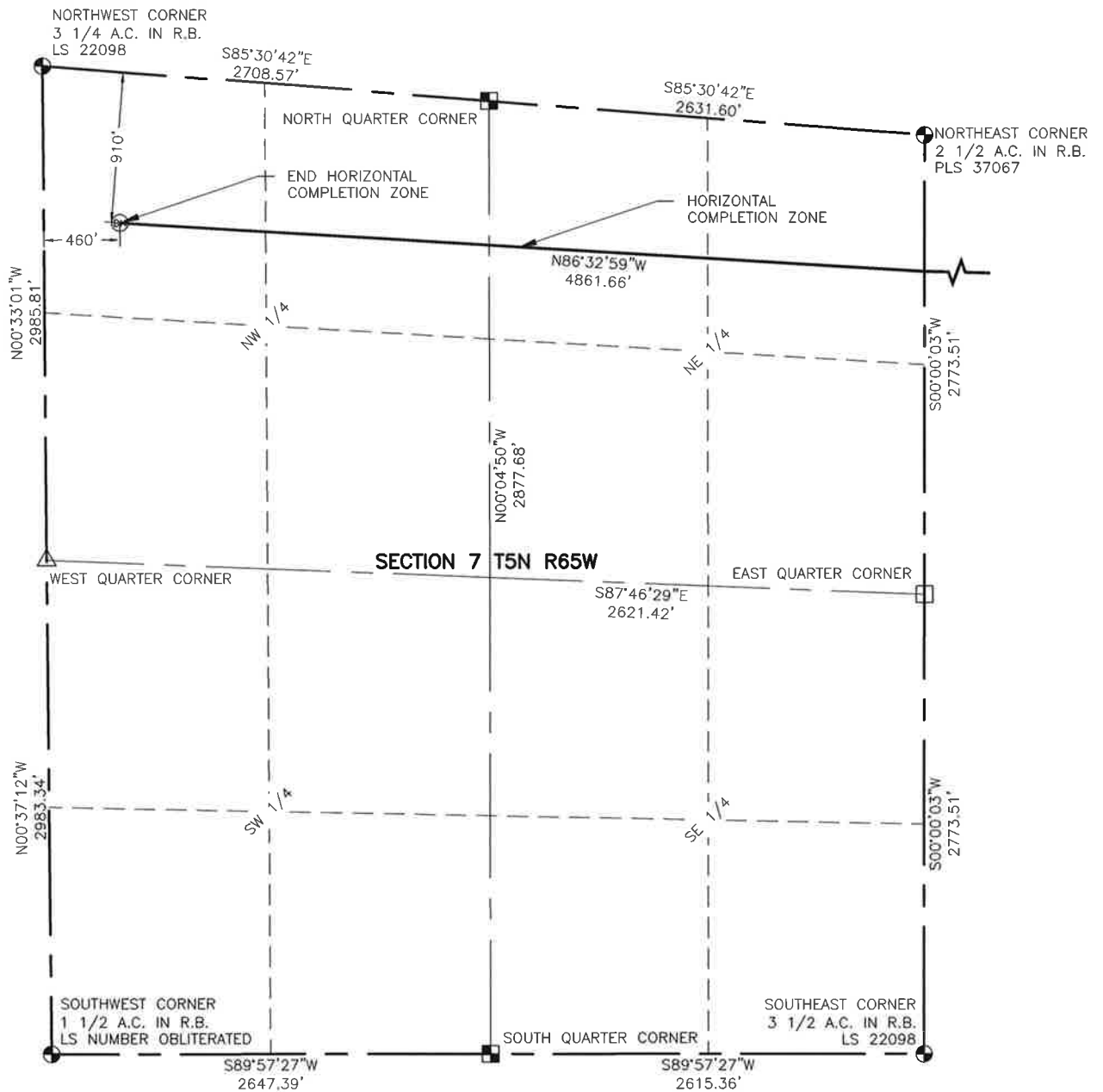


**LAMP RYNEARSON  
& ASSOCIATES**

4715 Innovation Drive 970.226.0342 | P  
Fort Collins, CO 80525 970.226.0879 | F  
www.LRA-Inc.com

Proposed Well Location Exhibit  
MT-MAPLEWOOD C2-8-7  
2 OF 3

drawn by SSZ	date 3/26/15	cogcc id	project - task number 0210035.00-502	book and page MR01/MR02	surface - location NE/4,NW/4, SEC 9 T5N R65W
path\filename P:\_Engineering\0210035 MRI Midtown\DRAWINGS\EXHIBITS\0210035EXWP-00R1C.dwg					



#### NOTES:

1. DISTANCES ARE MEASURED PERPENDICULAR TO NEAREST SECTION LINE AND ARE SHOWN ON THE SAME SIDE OF THE SECTION LINE WHERE THE WELL IS LOCATED.
2. THIS MAP DOES NOT REPRESENT A MONUMENTED BOUNDARY SURVEY. SIXTEENTH CORNER LOCATIONS ARE COMPUTED, UNLESS OTHERWISE NOTED.
3. BOTTOM HOLE LOCATIONS AND HORIZONTAL COMPLETION ZONE PROVIDED BY OTHERS.



0 1000

SCALE: 1"= 1000'  
U.S. SURVEY FEET

#### LEGEND

- ALIQUOT CORNER
- ⊙ BOTTOM HOLE
- COMPUTED ALIQUOT CORNER FROM GLO RECORDS
- △ COMPUTED ALIQUOT CORNER FROM MONUMENT ACCESSORIES
- COMPUTED ALIQUOT CORNER LOCATION
- A.C. ALUMINUM CAP
- R.B. RANGE BOX



**LAMP RYNEARSON  
& ASSOCIATES**

4715 Innovation Drive 970.226.0342 | P  
Fort Collins, CO 80525 970.226.0879 | F  
www.LRA-Inc.com

Proposed Well Location Exhibit  
MKT-MAPLEWOOD C2-8-7  
3 OF 3

drawn by	date	cogcc id	project - task number	book and page	surface - location
JPM	3/26/15		0210035.00-502	MR01/MR02	NE/4,NW/4, SEC 9 T5N R65W
path\filename P:\_Engineering\0210035 MRI Midtown\DRAWINGS\EXHIBITS\0210035EXWP-00R2C.dwg					