

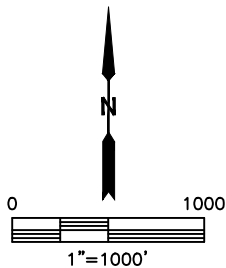
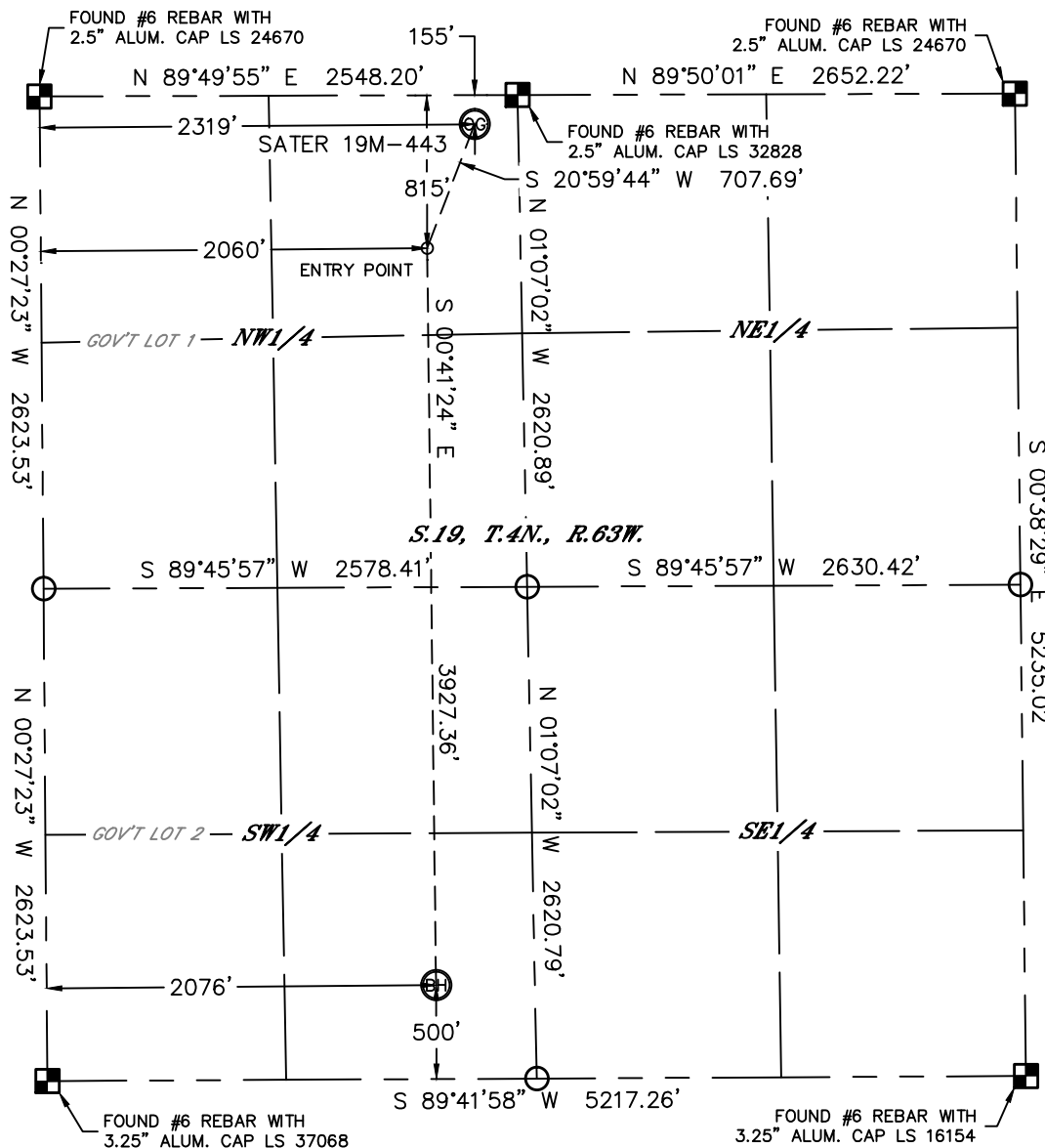


Lat40°, Inc. 6250 W. 10th Street, Unit 2, Greeley, CO 970-515-5294

# WELL LOCATION CERTIFICATE

THIS MAP DOES NOT REPRESENT A BOUNDARY SURVEY

SECTION: 19  
TOWNSHIP: 4N  
RANGE: 63W



In accordance with a request from Mac Neumann with PDC ENERGY Lat40°, Inc. has determined the surface location of the SATER 19M-443 to be 155' from the NORTH line and 2319' from the WEST line and the bottom hole to be 500' from the SOUTH line and 2076' from the WEST line as measured at right angles from the section lines of Section 19, Township 4 North, Range 63 West of the Sixth Principal Meridian, County of Weld, State of Colorado.

I hereby state that this Well Location Certificate was prepared by me, or under my direct supervision, that the fieldwork was completed on 9/9/2014, for and on behalf of PDC ENERGY. That this is not a Land Survey Plat or an Improvement Survey Plat, and that it is not to be relied upon for establishment of fence, building, or other future improvement lines.

**SURFACE LOCATION**  
LAT: 40.30443°N  
LONG: 104.48137°W  
PDOP: 2.9  
ELEV: 4664'  
1/4,1/4: NENW

**BOTTOM HOLE**  
LAT: 40.29185°N  
LONG: 104.48230°W

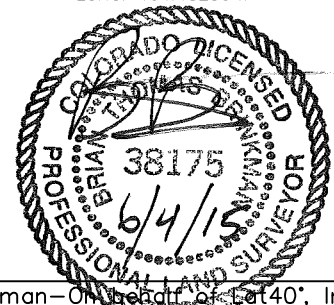
**ENTRY POINT**  
LAT: 40.30263°N  
LONG: 104.48231°W

## NOTE:

- 1) Bearings shown are Grid Bearings of the Colorado State Plane Coordinate System, North Zone, North American Datum 1983. The lineal dimensions as contained herein are based upon the "U.S. Survey Foot."
- 2) Ground elevations are based on an observed GPS elevation (NAVD 1988 DATUM).
- 3) IMPROVEMENTS: See LOCATION DRAWING for all visible improvements within 500' of disturbed area.
- 4) SURFACE USE: RANGELAND
- 5) INSTRUMENT OPERATOR: WYATT HALL
- 6) NEAREST CULTURAL ITEMS:  
BUILDING: 5280'+  
BUILDING UNIT: 5280'+  
HIGH OCCUPANCY BUILDING UNIT: 5280'+  
DESIGNATED OUTSIDE ACTIVITY AREA: 5280'+  
PUBLIC ROAD: 5280'+  
ABOVEGROUND UTILITY: ±3698' NW  
RAILROAD: 5280'+  
PROPERTY LINE: ±155' N

## LEGEND

- = ALIQUOT MONUMENT AS DESCRIBED  
○ = CALCULATED POSITION



Brian T. Brinkman—On Behalf of Lat40°, Inc.  
Colorado Licensed Professional  
Land Surveyor No. 38175  
DATE: 6/3/2015  
PROJECT#: 2014167

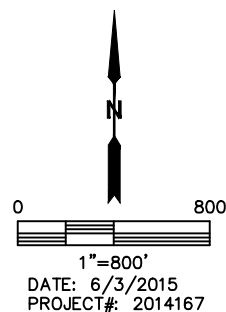
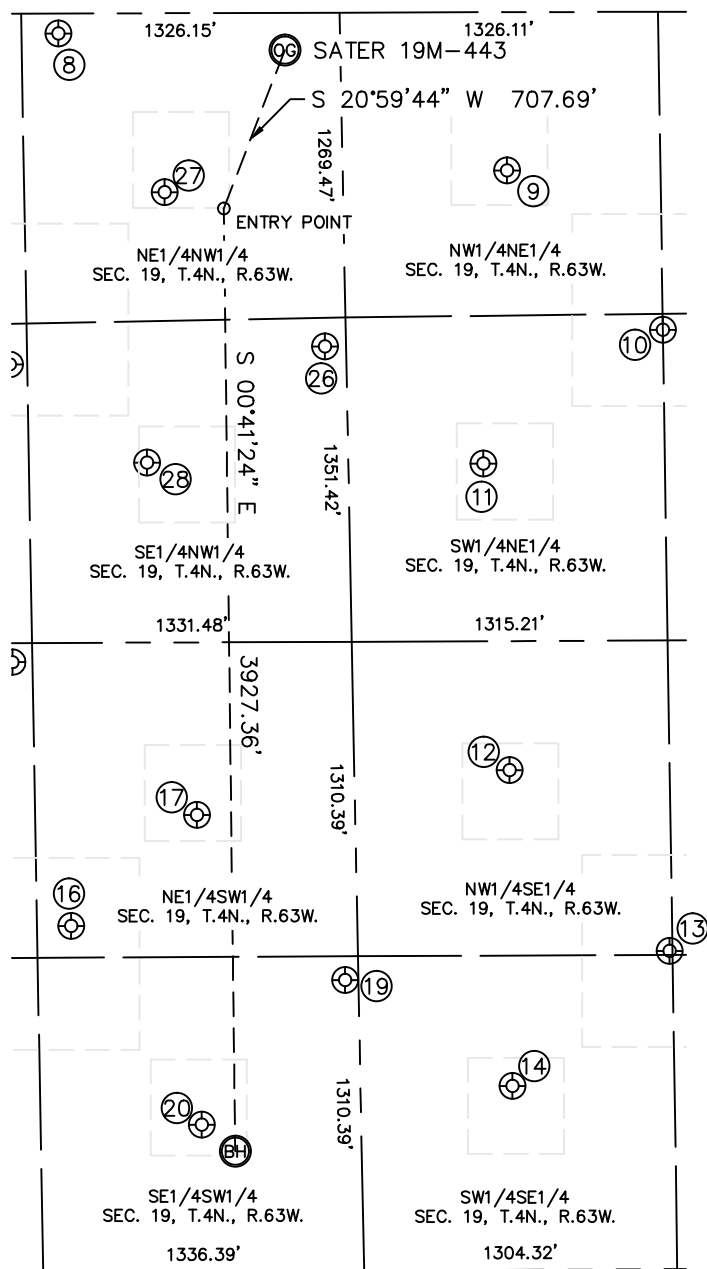


Lat40°, Inc. 6250 W. 10th Street, Unit 2, Greeley, CO 970-515-5294

## SITE SKETCH

SATER 19M-443

SECTION: 19  
TOWNSHIP: 4N  
RANGE: 63W



DATE: 6/3/2015  
PROJECT#: 2014167

WELL NO.	WELL NAME	SHL FOOTAGE				SHL LAT°	SHL LONG°	PDOP	ELEV (FT.)	1/4/1/4
8	SATER 19-JU	84	FNL	1377	FWL	40.30465	-104.48475	1.9	4665	NENW
9	CAPITAL 31-19	659	FNL	1962	FEL	40.30302	-104.47808	2.2	4673	NWNE
10	SATER USX CC 19-17	1325	FNL	1322	FEL	40.30118	-104.47578	2.3	4682	SWNE
11	SATER USX CC 19-07	1880	FNL	2075	FEL	40.29968	-104.47848	2.3	4686	SWNE
12	SATER CC 19-10	2081	FSL	1980	FEL	40.29617	-104.47814	2.5	4692	NWSE
13	SATER CC 19-23	1325	FSL	1322	FEL	40.29408	-104.47579	2.5	4705	NWSE
14	SATER CC 19-15	766	FSL	1982	FEL	40.29256	-104.47815	2.6	4735	SWSE
16	SATER 19-BU	1442	FSL	1400	FWL	40.29444	-104.48471	3.1	4716	NESW
17	SATER 23-19U	1902	FSL	1927	FWL	40.29570	-104.48282	3.0	4701	NESW
19	SATER 19-PU	1211	FSL	2538	FWL	40.29379	-104.48064	2.7	4708	SESW
20	SATER 24-19U	612	FSL	1937	FWL	40.29216	-104.48280	2.5	4735	SESW
26	SATER 19-NU	1390	FNL	2476	FWL	40.30104	-104.48082	2.9	4674	SENW
27	SATER 21-19U	746	FNL	1813	FWL	40.30282	-104.48319	2.8	4686	NENW
28	SATER 22-19U	1873	FNL	1731	FWL	40.29973	-104.48350	2.7	4684	SENW