

**LEGEND:**

 PROPOSED LOCATION

**EOG RESOURCES, INC.**

**RANDALL CREEK 29 SESE ON  
EXISTING RANDALL CREEK #2-29H PAD  
SE 1/4 SE 1/4, SECTION 29, T12N, R62W, 6th P.M.  
WELD COUNTY, COLORADO**

DRAWN BY: C.R.

DATE DRAWN: 01-27-15

SCALE: 1:100,000

REVISED: 05-06-15 C.M.F.

**ACCESS ROAD MAP**

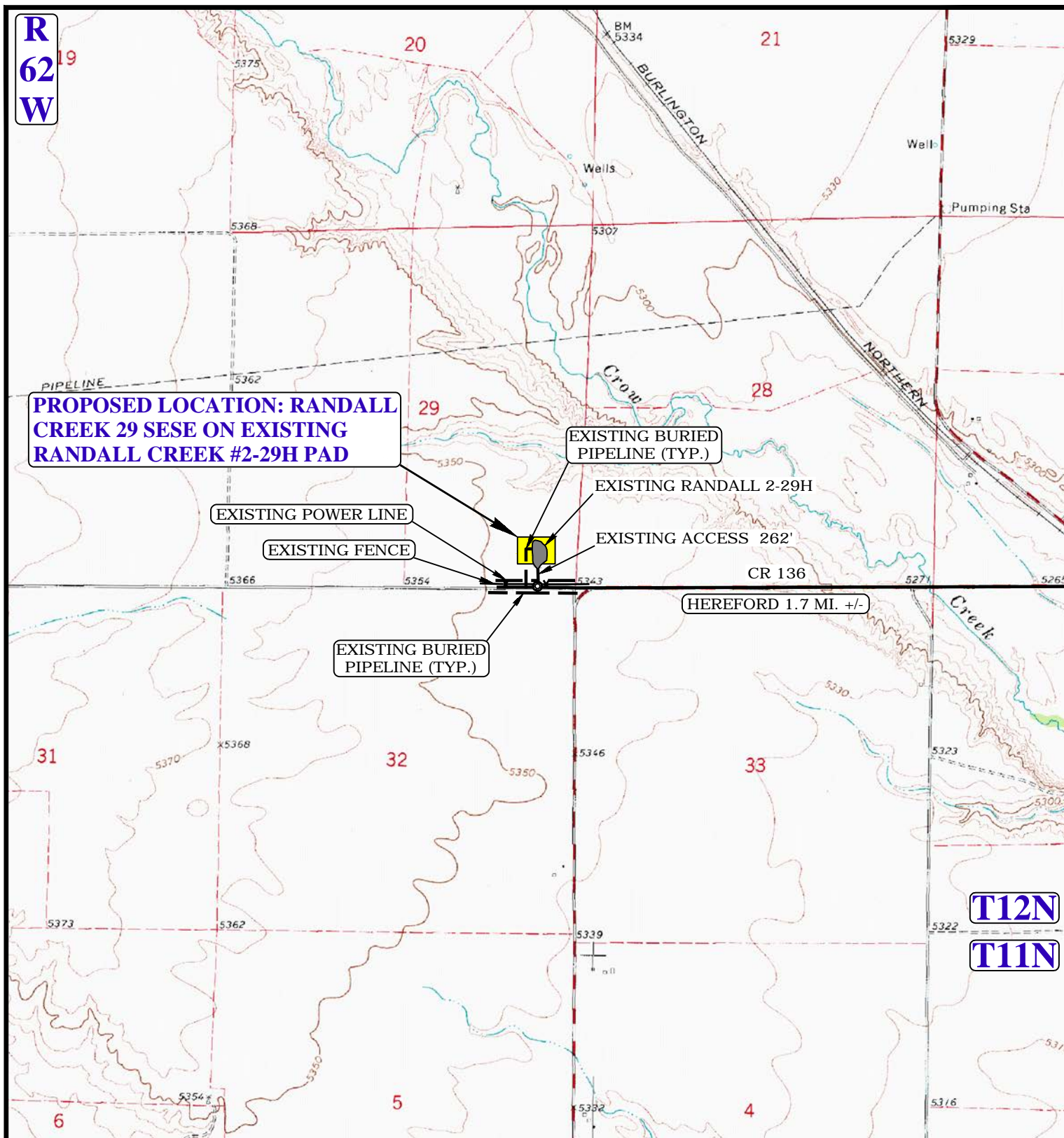
**TOPO A**



**UELS, LLC**  
Corporate Office \* 85 South 200 East  
Vernal, UT 84078 \* (435) 789-1017







NOTE: PARCEL DATA SHOWN HAS BEEN OBTAINED FROM VARIOUS SOURCES AND SHOULD BE USED FOR MAPPING, GRAPHIC AND PLANNING PURPOSES ONLY. NO WARRANTY IS MADE BY UINTAH ENGINEERING AND LAND SURVEYING (UELS) FOR ACCURACY OF THE PARCEL DATA.

#### LEGEND:

- EXISTING ROAD
- PROPOSED ROAD
- EXISTING POWER LINE
- EXISTING PIPELINE

#### EOG RESOURCES, INC.

**RANDALL CREEK 29 SESE ON  
EXISTING RANDALL CREEK #2-29H PAD  
SE 1/4 SE 1/4, SECTION 29, T12N, R62W, 6th P.M.  
WELD COUNTY, COLORADO**

DRAWN BY: C.R.

DATE DRAWN: 01-27-15

SCALE: 1" = 2000'

REVISED: 05-06-15 C.M.F.

**ACCESS ROAD MAP**

**TOPO B**



**UELS, LLC**  
Corporate Office \* 85 South 200 East  
Vernal, UT 84078 \* (435) 789-1017

