

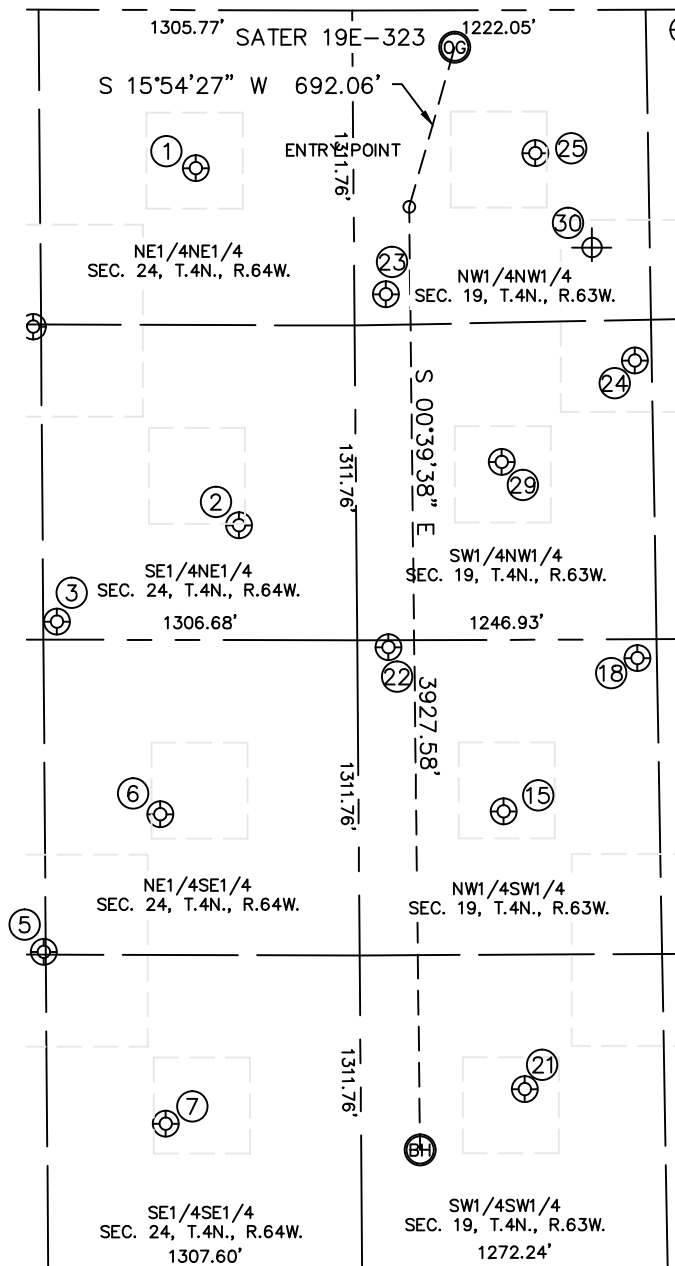


Lat40°, Inc. 6250 W. 10th Street, Unit 2, Greeley, CO 970-515-5294

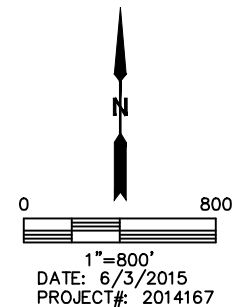
SITE SKETCH

SATER 19E-323

SECTION: 19
TOWNSHIP: 4N
RANGE: 63W



NOTE: THE ABANDONED WELL DATA SHOWN IN RED BELOW WAS OBTAINED FROM COGCC SCOUT CARDS.



WELL NO.	WELL NAME	SHL FOOTAGE				SHL LAT°	SHL LONG°	PDOP	ELEV (FT.)	1/4/1/4
1	SPIKE ST GWS C 24-01	659	FNL	657	FEL	40.30313	-104.49205	3.5	4698	NENE
2	ELISE STATE C 24-8	2145	FNL	488	FEL	40.29904	-104.49146	3.1	4703	SENE
3	ELISE STATE C 24-22	2549	FNL	1250	FEL	40.29796	-104.49420	2.8	4709	SENE
5	ELISE STATE C 24-23	1323	FSL	1316	FEL	40.29419	-104.49445	2.6	4721	NWSE
6	SPIKE ST GWS C 24-09	1897	FSL	826	FEL	40.29575	-104.49269	2.5	4711	NESE
7	SPIKE ST GWS C 24-16	609	FSL	814	FEL	40.29221	-104.49266	2.3	4731	SESE
15	SATER 13-19U	1907	FSL	604	FWL	40.29574	-104.48756	3.1	4742	NWSW
18	SATER 19-KU	2543	FSL	1166	FWL	40.29747	-104.48554	2.9	4695	NWSW
21	SATER 14-19U	751	FSL	683	FWL	40.29256	-104.48729	2.5	4735	SWSW
22	SATER 19-GU	2594	FSL	130	FWL	40.29763	-104.48925	3.4	4723	NWSW
23	SATER 19F-UNIOIL	1183	FNL	130	FWL	40.30166	-104.48923	3.4	4686	NWNW
24	SATER 19-AU	1461	FNL	1165	FWL	40.30087	-104.48552	3.2	4687	SWNW
25	SATER 11-19U	597	FNL	757	FWL	40.30326	-104.48698	3.0	4675	NWNW
29	SATER 12-19U	1882	FNL	607	FWL	40.29973	-104.48753	1.7	4686	SWNW
30	LIMERICK 1	990	FNL	990	FWL	40.30198	-104.48616	N/A	4683	NWNW