

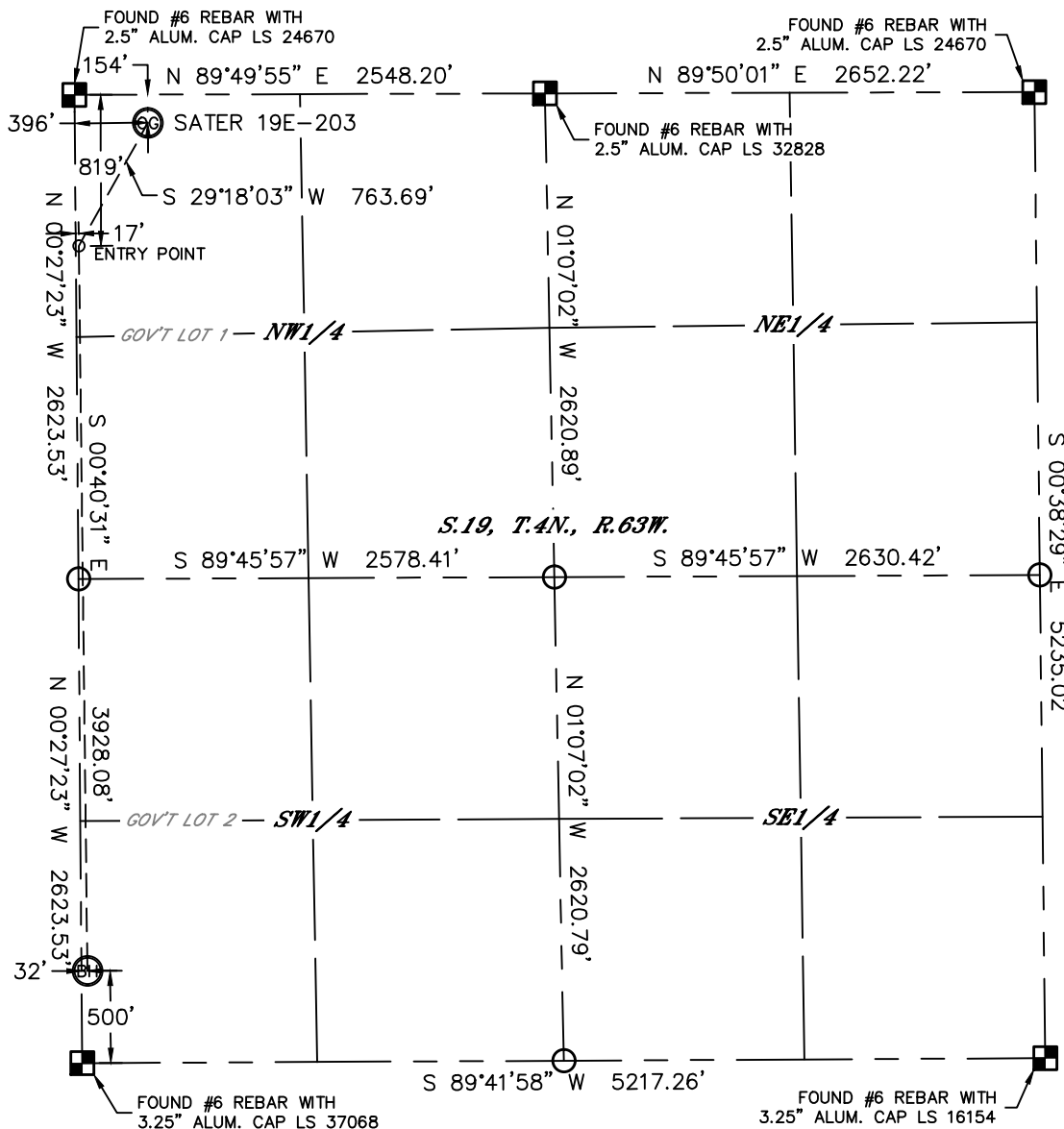


Lat40°, Inc. 6250 W. 10th Street, Unit 2, Greeley, CO 970-515-5294

# WELL LOCATION CERTIFICATE

THIS MAP DOES NOT REPRESENT A BOUNDARY SURVEY

SECTION: 19  
TOWNSHIP: 4N  
RANGE: 63W



In accordance with a request from Mac Neumann with PDC ENERGY Lat40°, Inc. has determined the surface location of the SATER 19E-203 to be 154' from the NORTH line and 396' from the WEST line and the bottom hole to be 500' from the SOUTH line and 32' from the WEST line as measured at right angles from the section lines of Section 19, Township 4 North, Range 63 West of the Sixth Principal Meridian, County of Weld, State of Colorado.

I hereby state that this Well Location Certificate was prepared by me, or under my direct supervision, that the fieldwork was completed on 9/9/2014, for and on behalf of PDC ENERGY. That this is not a Land Survey Plat or an Improvement Survey Plat, and that it is not to be relied upon for establishment of fence, building, or other future improvement lines.

**SURFACE LOCATION**  
LAT: 40.30448°N  
LONG: 104.48827°W  
PDOP: 2.2  
ELEV: 4661'  
1/4, 1/4: NWNW

**BOTTOM HOLE**  
LAT: 40.29188°N  
LONG: 104.48963°W

**ENTRY POINT**  
LAT: 40.30266°N  
LONG: 104.48963°W

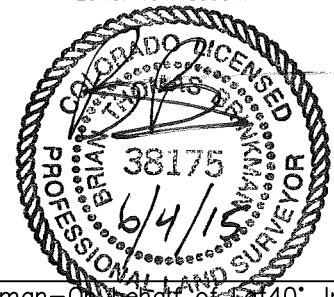
## NOTE:

- 1) Bearings shown are Grid Bearings of the Colorado State Plane Coordinate System, North Zone, North American Datum 1983. The lineal dimensions as contained herein are based upon the "U.S. Survey Foot."
- 2) Ground elevations are based on an observed GPS elevation (NAVD 1988 DATUM).
- 3) IMPROVEMENTS: See LOCATION DRAWING for all visible improvements within 500' of disturbed area.
- 4) SURFACE USE: RANGELAND
- 5) INSTRUMENT OPERATOR: WYATT HALL
- 6) NEAREST CULTURAL ITEMS:  
BUILDING: ±4936' NW  
BUILDING UNIT: 5280'+  
HIGH OCCUPANCY BUILDING UNIT: 5280'+  
DESIGNATED OUTSIDE ACTIVITY AREA: 5280'+  
PUBLIC ROAD: 5280'+  
ABOVEGROUND UTILITY: ±2964' NW  
RAILROAD: 5280'+  
PROPERTY LINE: ±154' N

## LEGEND

- = ALIQUOT MONUMENT AS DESCRIBED  
○ = CALCULATED POSITION

Brian T. Brinkman—On Behalf of Lat40°, Inc.  
Colorado Licensed Professional  
Land Surveyor No. 38175  
DATE: 6/3/2015  
PROJECT#: 2014167



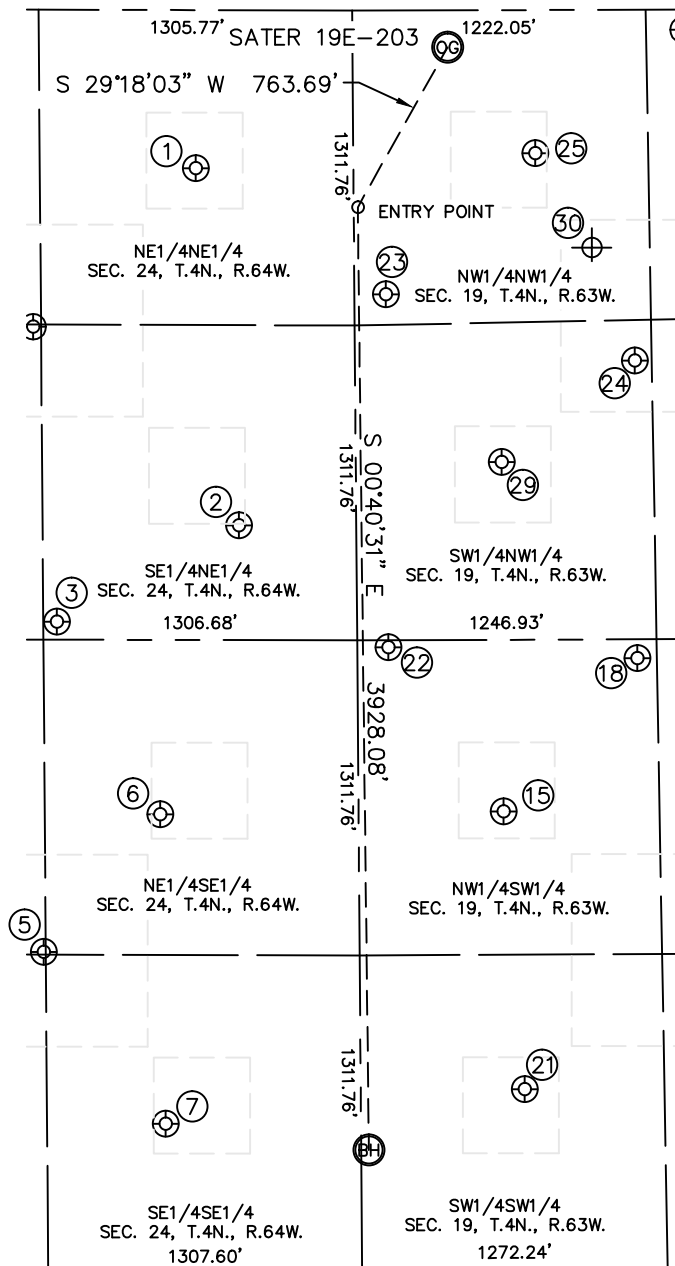


Lat40°, Inc. 6250 W. 10th Street, Unit 2, Greeley, CO 970-515-5294

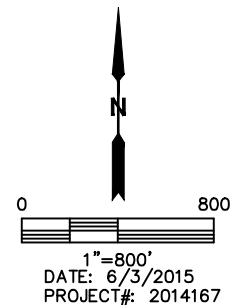
## SITE SKETCH

SATER 19E-203

SECTION: 19  
TOWNSHIP: 4N  
RANGE: 63W



NOTE: THE ABANDONED WELL DATA SHOWN IN RED BELOW WAS OBTAINED FROM COGCC SCOUT CARDS.



WELL NO.	WELL NAME	SHL FOOTAGE				SHL LAT°	SHL LONG°	PDOP	ELEV (FT.)	1/4/1/4
1	SPIKE ST GWS C 24-01	659	FNL	657	FEL	40.30313	-104.49205	3.5	4698	NENE
2	ELISE STATE C 24-8	2145	FNL	488	FEL	40.29904	-104.49146	3.1	4703	SENE
3	ELISE STATE C 24-22	2549	FNL	1250	FEL	40.29796	-104.49420	2.8	4709	SENE
5	ELISE STATE C 24-23	1323	FSL	1316	FEL	40.29419	-104.49445	2.6	4721	NWSE
6	SPIKE ST GWS C 24-09	1897	FSL	826	FEL	40.29575	-104.49269	2.5	4711	NESE
7	SPIKE ST GWS C 24-16	609	FSL	814	FEL	40.29221	-104.49266	2.3	4731	SESE
15	SATER 13-19U	1907	FSL	604	FWL	40.29574	-104.48756	3.1	4742	NWSW
18	SATER 19-KU	2543	FSL	1166	FWL	40.29747	-104.48554	2.9	4695	NWSW
21	SATER 14-19U	751	FSL	683	FWL	40.29256	-104.48729	2.5	4735	SWSW
22	SATER 19-GU	2594	FSL	130	FWL	40.29763	-104.48925	3.4	4723	NWSW
23	SATER 19F-UNIOIL	1183	FNL	130	FWL	40.30166	-104.48923	3.4	4686	NWNW
24	SATER 19-AU	1461	FNL	1165	FWL	40.30087	-104.48552	3.2	4687	SWNW
25	SATER 11-19U	597	FNL	757	FWL	40.30326	-104.48698	3.0	4675	NWNW
29	SATER 12-19U	1882	FNL	607	FWL	40.29973	-104.48753	1.7	4686	SWNW
30	LIMERICK 1	990	FNL	990	FWL	40.30198	-104.48616	N/A	4683	NWNW