

City and County of Denver

Date: 6/19/2015
 Prepared by: JMB
 Well Name: Winn 2
 Field: Third Creek
 Legal: SWSW Sec. 6 T2S R65W

Geological tops

Niobrara 7,423'
 D Sand 8,214'
 J Sand 8,251'

County: Adams
 State: Colorado
 GL: 5,259'
 KB: 5,269'
 API: 05-001-06922

Spud date: 4/16/1975
 Completion date: 5/9/1975
 Producing zone: J Sand

Hole Size: 12 1/4"
 Surface Casing: 8 5/8" 24#
 Cement Volume: 150 sx

Surface Casing Shoe: 220'
 TOC ? Run CBL
 40 sx plug 1,825 - 1,425'
 cmt retainer 3,245'

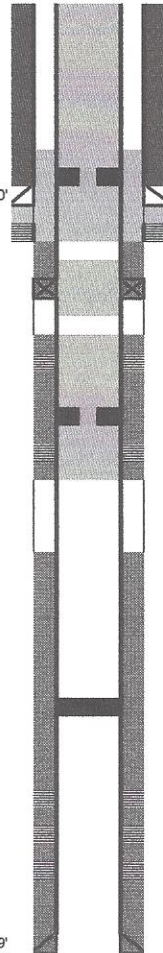
Production Casing: 4 /2 10.5 & 11.6#

Perforations

J Sand 8,266 - 8,290'
 2SPF 8,308 - 8,314'

1,000 gals gel acid
 10,000# 100 mesh
 145,000# 20/40
 45,000# 10/20
 95,000 gal Super Emulsifrac

Csg pt: 8,399'
 TD: 8,400'



perf 2 shots @ 280'
 set ret @ 175', pump 40 sx thru
 retainer and 15 sx on top to surface

DV @ 1,625'
 CMT'd w/ 350 sx

Leak btwn 3,231 - 3,262', could not pump into
 Perf 2 shots @ 3,275' and 2 shots @ 3,210',
 pump 95 sx thru ret @ 3,245'
 pump 10 sx on top of retainer

TOC ? Run CBL

CIBP 8,200' w/ 2 sx

Cement
 150 sx

Hole Size 7 7/8 "

PBTD
 8,330'

City and County of Denver

Date: 6/19/2015
 Prepared by: JMB
 Well Name: Winn 2
 Field: Third Creek
 Legal: SWSW Sec. 6 T2S R65W

Geological tops

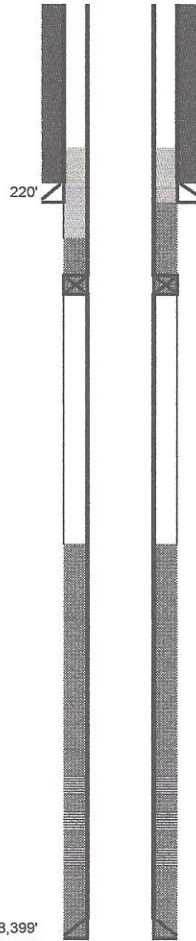
Niobrara 7,423'
 D Sand 8,214'
 J Sand 8,251'

County: Adams
 State: Colorado
 GL: 5,259'
 KB: 5,269'
 API: 05-001-06922

Spud date: 4/16/1975
 Completion date: 5/9/1975
 Producing zone: J Sand

Hole Size: 12 1/4"
 Surface Casing: 8 5/8" 24#
 Cement Volume: 150 sx

Surface Casing Shoe



TOC ? Run CBL

DV @ 1,625'
 CMT'd w/ 350 sx

Leak btwn 3,231 - 3,262', could not pump into

TOC ? Run CBL

Production Casing: 4 /2 10.5 & 11.6#

Perforations

J Sand 8,266 - 8,290'
 2SPF 8,308 - 8,314'

1,000 gals gel acid
 10,000# 100 mesh
 145,000# 20/40
 45,000# 10/20
 95,000 gal Super Emulsifrac

Cement 150 sx

Hole Size 7 7/8 "

Csg pt 8,399'
 TD 8,400'

PBTD 8,330'