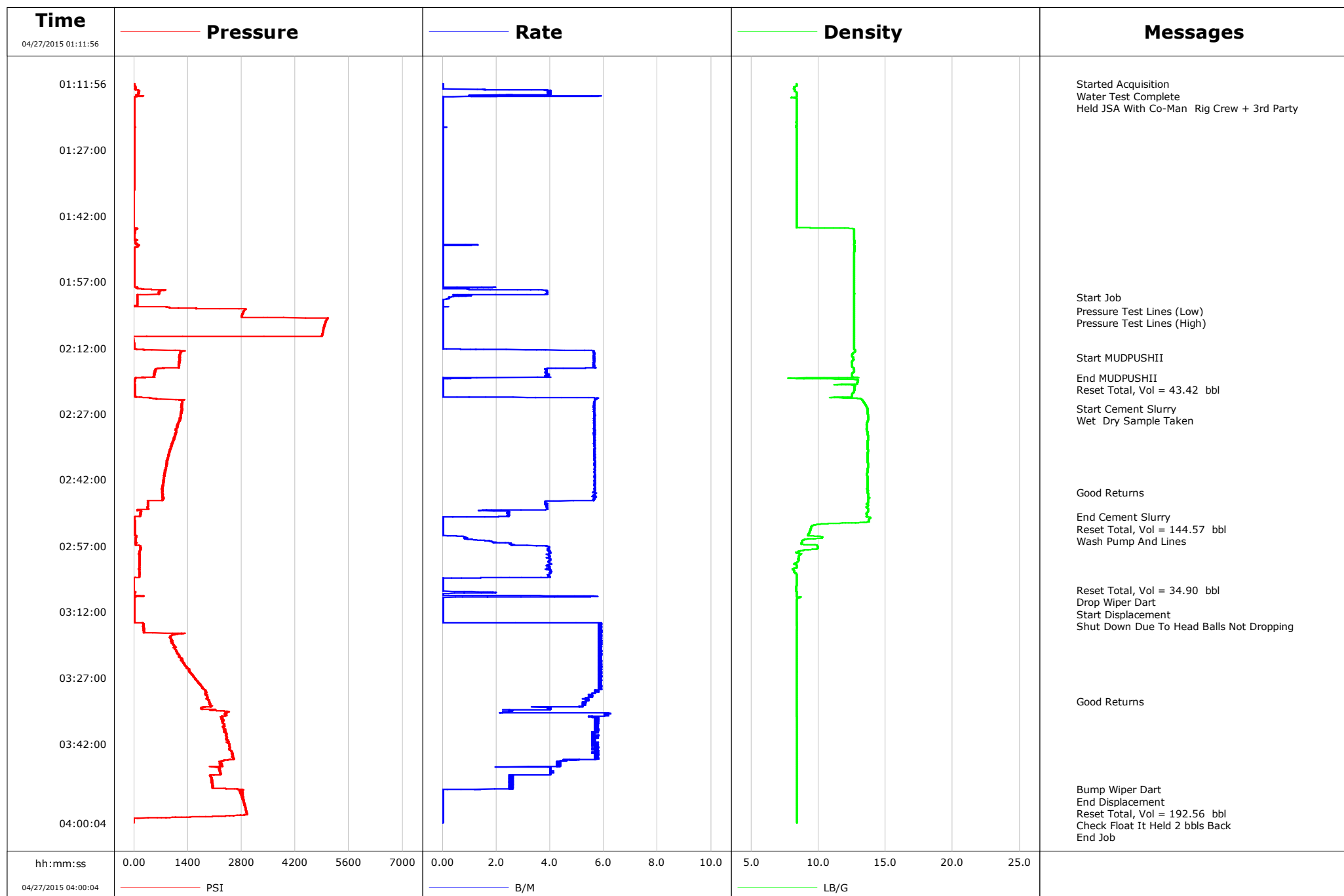


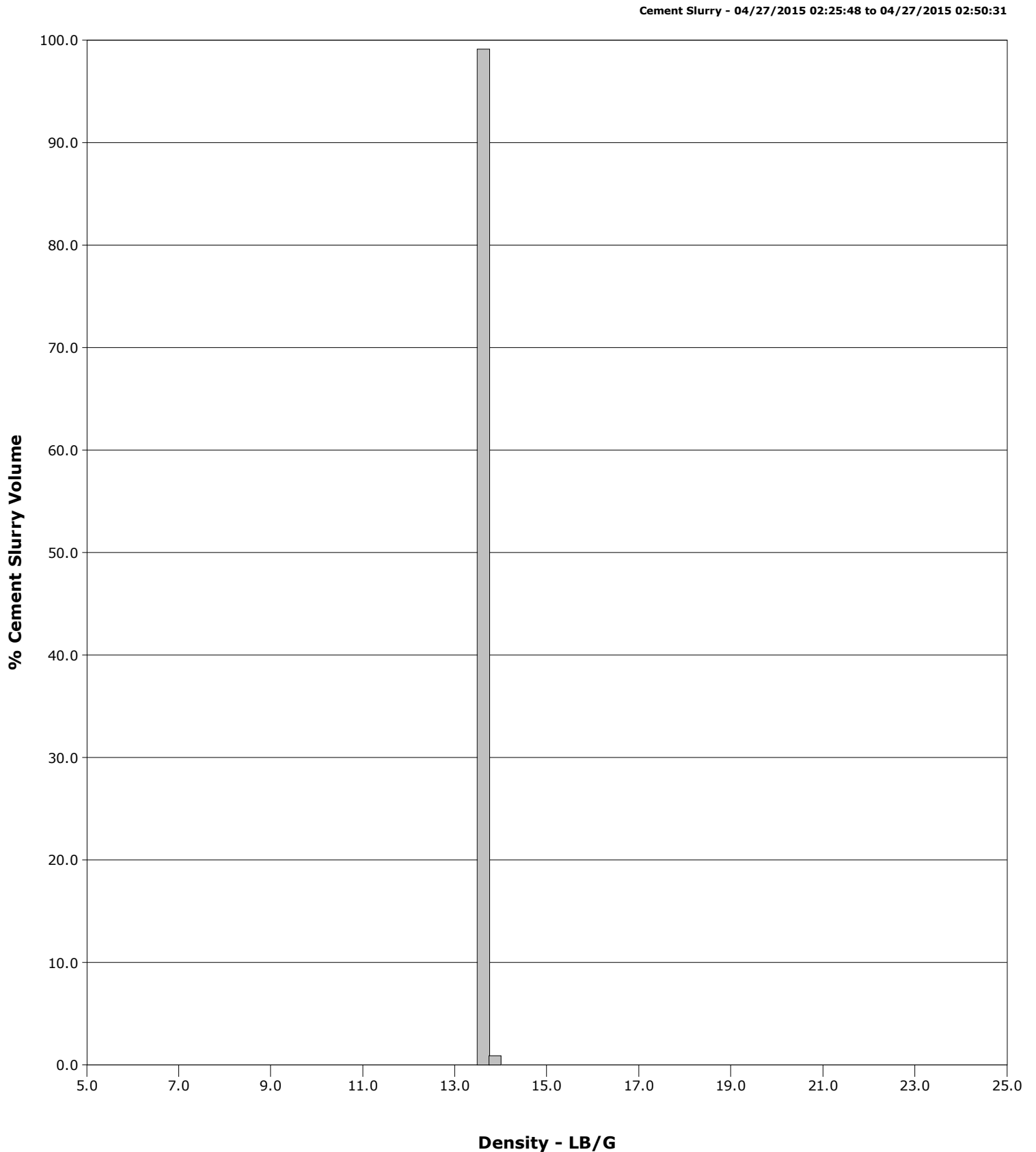
Well Sprague
Field Wattenberg
Engineer Wayne Silvester/Justin Storey
Country United States

Client Encana
SIR No. CWJN-01034
Job Type Production
Job Date 04-26-2015



Well Sprague
Field Wattenberg
Engineer Wayne Silvester/Justin Storey
Country United States

Client Encana
SIR No. CWJN-01034
Job Type Production
Job Date 04-26-2015



Cementing Service Report

				Customer Encana			Job Number CWJN-01034	
Well Sprague 3I-9H			Location (legal) 217304		Schlumberger Location Cheyenne			Job Start Apr/26/2015
Field Wattenberg		Formation Name/Type Shale		Deviation deg	Bit Size in	Well MD 12875.0 ft	Well TVD 12880.0 ft	
County Weld		State/Province Colorado		BHP psi	BHST 215 degF	BHCT 215 degF	Pore Press. Gradient lb/gal	
Well Master 0631548281		API/UWI 05123392690000						
Rig Name Patterson 272	Drilled For Oil & Gas	Service Via Land		Casing/ Liner				
				Depth, ft	Size, in	Weight, lb/ft	Grade	
				12880.0	4.5	13.5	N/A	
				0.0	0.0	0.0		
Offshore Zone		Well Class New	Well Type Other					
Drilling Fluid Type Bentonite		Max. Density 11.50 lb/gal	Plastic Viscosity cP	Tubing/Drill Pipe				
				T/D	Depth, ft	Size, in	Weight, lb/ft	
Service Line Cementing		Job Type Production						
Max. Allowed Tub. Press psi		Max. Allowed Ann. Press psi	WH Connection 1502	Perforations/Open Hole				
				Top, ft	Bottom, ft	shot/ft	No. of Shots	
				ft	ft		Total Interval ft	
				ft	ft		Diameter in	
				Treat Down Casing	Displacement 192.0 bbl	Packer Type	Packer Depth ft	
				Tubing Vol. bbl	Casing Vol. 193.0 bbl	Annular Vol. bbl	Openhole Vol. bbl	
Casing/Tubing Secured <input checked="" type="checkbox"/>		1 Hole Vol. Circulated prior to Cement <input checked="" type="checkbox"/>		Casing Tools		Squeeze Job		
Lift Pressure 2300 psi				Shoe Type Float		Squeeze Type		
Pipe Rotated <input type="checkbox"/>		Pipe Reciprocated <input type="checkbox"/>		Shoe Depth 12880.0 ft		Tool Type		
No. Centralizers		Top Plugs 1	Bottom Plugs	Stage Tool Type		Tool Depth ft		
Cement Head Type 3RD Party				Stage Tool Depth ft		Tail Pipe Size in		
Job Scheduled For Apr/26/2015		Arrived on Location Apr/26/2015	Leave Location Apr/26/2015	Collar Type Float		Tail Pipe Depth ft		
				Collar Depth 12878.0 ft		Sqz. Total Vol. bbl		
Date	Time 24-hr clock	Flow Rate B/M	Density LB/G	Volume BBL	CPF1_PRESS PSI	Message		
04/27/2015	01:11:56	0.0	8.38	3.4	48	Started Acquisition		
04/27/2015	01:12:03	0.0	8.38	3.4	1	Water Test Complete		
04/27/2015	01:16:57	0.0	8.39	9.3	4			
04/27/2015	01:21:58	0.0	8.38	9.4	6			
04/27/2015	01:26:59	0.0	8.38	9.4	3			
04/27/2015	01:32:00	0.0	8.38	0.0	4			
04/27/2015	01:37:01	0.0	8.37	0.0	-1			
04/27/2015	01:42:02	0.0	8.37	0.0	-2			
04/27/2015	01:47:03	0.0	12.65	0.0	1			
04/27/2015	01:52:04	0.0	12.67	0.2	3			
04/27/2015	01:57:05	0.0	12.67	0.2	5			
04/27/2015	02:00:28	0.3	12.65	5.5	84	Start Job		
04/27/2015	02:02:06	0.0	12.66	5.6	80			
04/27/2015	02:03:32	0.0	12.66	5.6	2865	Pressure Test Lines (Low)		
04/27/2015	02:05:32	0.0	12.66	5.6	5019	Pressure Test Lines (High)		
04/27/2015	02:07:07	0.0	12.66	5.6	4950			
04/27/2015	02:12:08	0.0	12.66	5.6	7			
04/27/2015	02:14:12	5.6	12.58	15.5	1177	Start MUDPUSHII		
04/27/2015	02:17:09	3.9	12.65	31.2	559			
04/27/2015	02:18:48	0.0	12.17	37.5	49	End MUDPUSHII		
04/27/2015	02:18:51	0.0	10.43	37.5	48	Reset Total, Vol = 43.42 bbl		

Well			Field		Job Start	Customer	Job Number
Sprague 3I-9H			Wattenberg		Apr/26/2015	Encana	CWJN-01034
Date	Time 24-hr clock	Flow Rate B/M	Density LB/G	Volume BBL	CPF1_PRESS PSI	Message	
04/27/2015	02:25:48	5.6	13.64	51.8	1253	Start Cement Slurry	
04/27/2015	02:25:51	5.6	13.64	52.1	1244	Wet Dry Sample Taken	
04/27/2015	02:27:11	5.7	13.68	59.6	1228		
04/27/2015	02:32:12	5.6	13.68	87.9	1059		
04/27/2015	02:37:13	5.7	13.67	116.3	879		
04/27/2015	02:42:14	5.7	13.66	144.6	764		
04/27/2015	02:44:46	5.6	13.66	159.0	726	Good Returns	
04/27/2015	02:47:15	3.8	13.68	172.1	360		
04/27/2015	02:50:31	0.0	13.78	182.0	-2	End Cement Slurry	
04/27/2015	02:50:39	0.0	13.89	182.0	5	Reset Total, Vol = 144.57 bbl	
04/27/2015	02:50:54	0.0	13.81	182.0	10	Wash Pump And Lines	
04/27/2015	02:52:16	0.0	9.78	182.0	17		
04/27/2015	02:57:17	4.0	9.96	186.8	163		
04/27/2015	03:02:18	3.9	8.09	206.6	120		
04/27/2015	03:07:06	0.0	8.35	214.6	-3	Reset Total, Vol = 34.90 bbl	
04/27/2015	03:07:19	0.0	8.36	214.6	-2		
04/27/2015	03:08:45	0.0	8.67	216.9	13	Drop Wiper Dart	
04/27/2015	03:10:53	0.0	8.39	216.9	7	Start Displacement	
04/27/2015	03:12:20	0.0	8.38	216.9	7		
04/27/2015	03:13:02	0.0	8.38	216.9	7	Shut Down Due To Head Balls Not Dropping	
04/27/2015	03:17:21	5.8	8.39	233.2	982		
04/27/2015	03:22:22	5.8	8.38	262.5	1172		
04/27/2015	03:27:23	5.8	8.38	291.8	1601		
04/27/2015	03:32:24	5.3	8.38	320.2	1964	Good Returns	
04/27/2015	03:37:25	5.7	8.40	345.0	2311		
04/27/2015	03:42:26	5.7	8.41	373.4	2480		
04/27/2015	03:47:27	4.0	8.41	399.4	2169		
04/27/2015	03:52:28	0.2	8.41	414.5	2718		
04/27/2015	03:52:29	0.0	8.41	414.5	2778	Bump Wiper Dart	
04/27/2015	03:53:31	0.0	8.41	414.5	2800	Reset Total, Vol = 192.56 bbl	
04/27/2015	03:57:29	0.0	8.41	414.5	2921		
04/27/2015	03:59:14	0.0	8.41	414.5	-12	Check Float It Held 2 bbls Back	

Post Job Summary

Average Pump Rates, bbl/min					Volume of Fluid Injected, bbl			
Slurry 4.8	N2	Mud	Maximum Rate 6.3	Total Slurry 144.5	Mud 0.0	Spacer 40.4	N2	
Treating Pressure Summary, psi					Breakdown Fluid			
Maximum 5050	Final -6	Average 950	Bump Plug to 2816	Breakdown	Type	Volume bbl	Density lb/gal	
Avg. N2 Percent %		Designed Slurry Volume 142.0 bbl		Displacement 192.5 bbl	Mix Water Temp 60 degF	Cement Circulated to Surface? <input type="checkbox"/>	Volume bbl	
						Washed Thru Perfs <input type="checkbox"/>	To ft	
Customer or Authorized Representative Chris Clemens			Schlumberger Supervisor Wayne Silvester/Justin Storey			Circulation Lost <input type="checkbox"/>	Job Completed <input checked="" type="checkbox"/>	
						-	-	