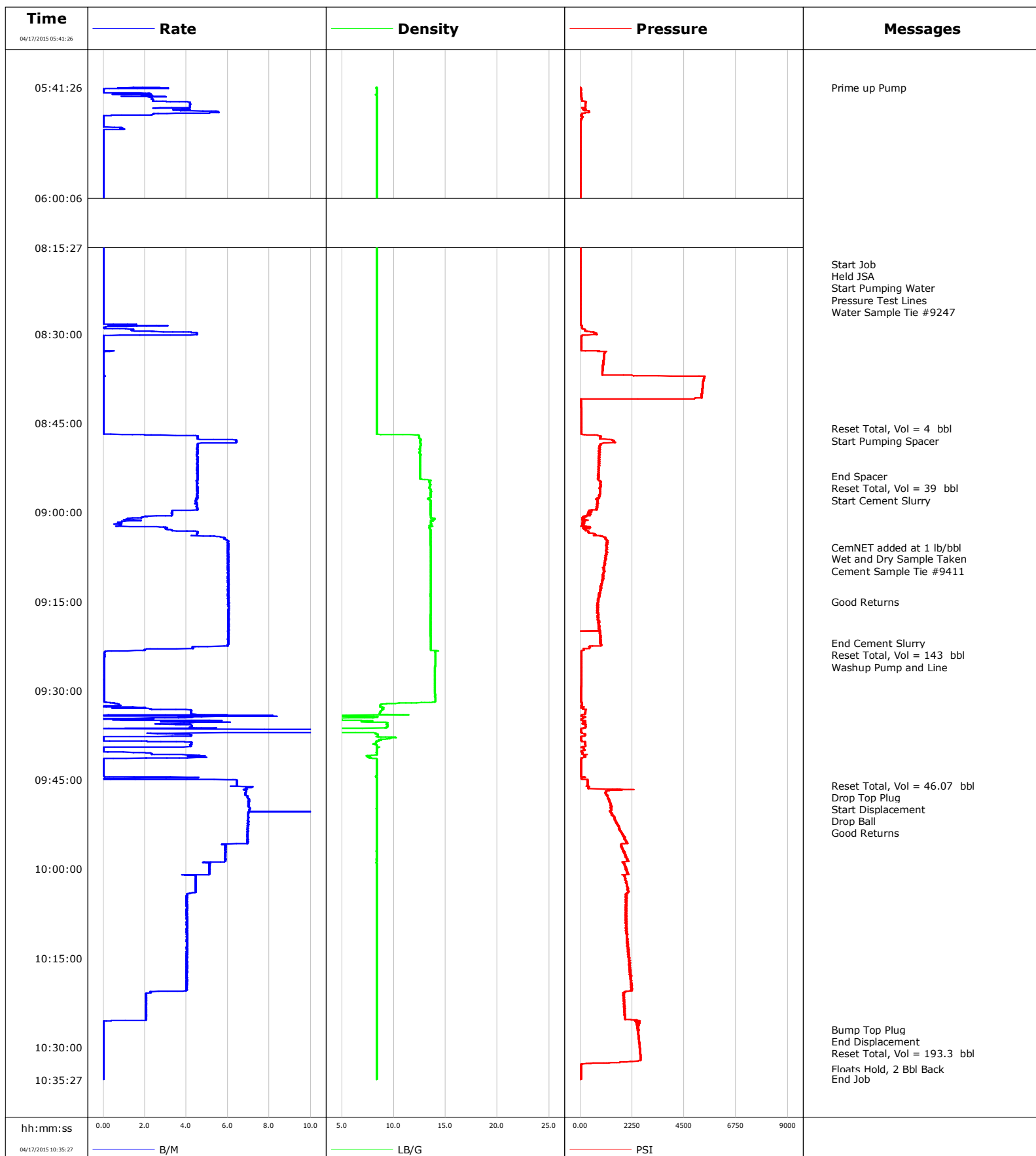


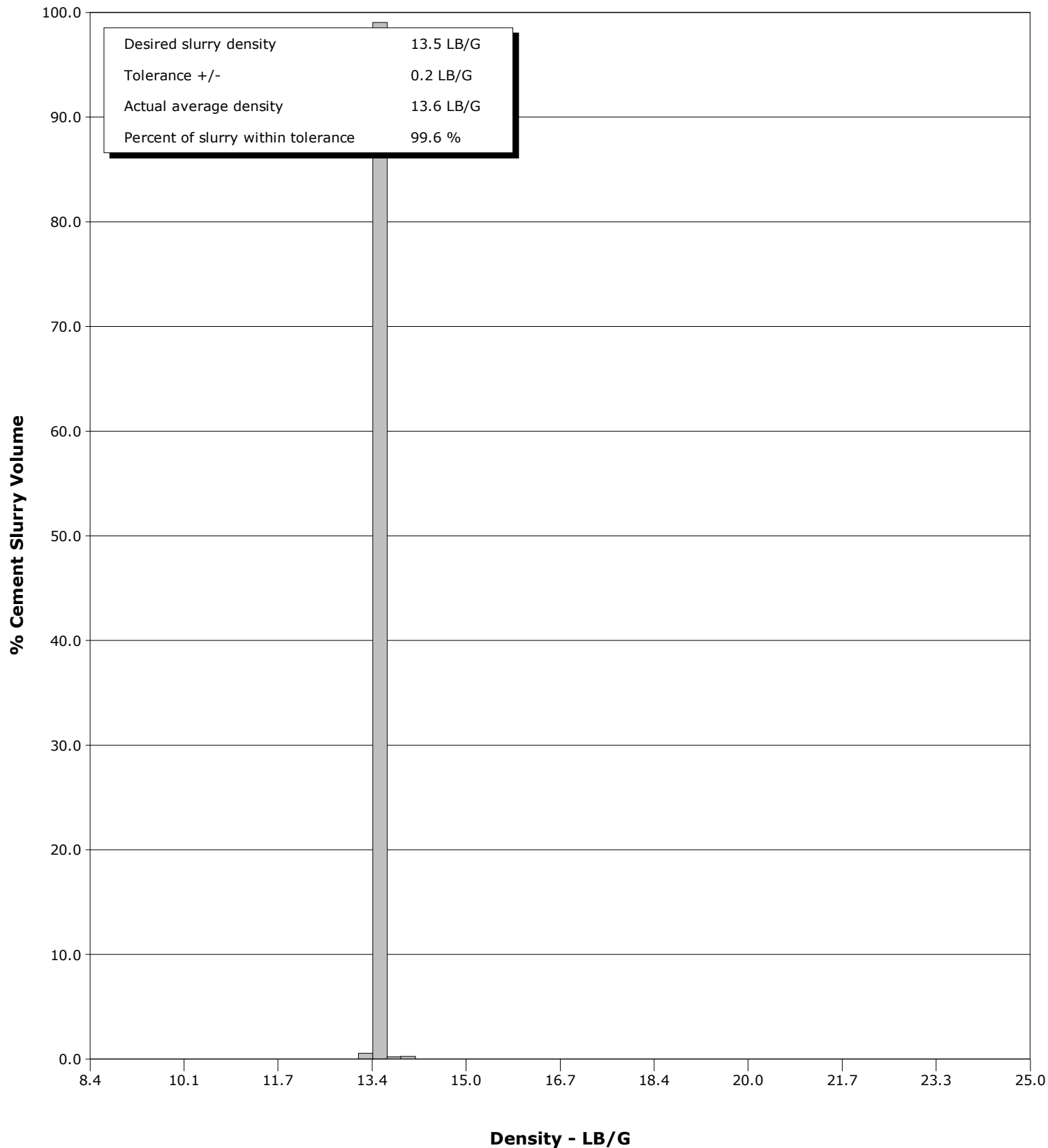
Well	Sprague 3H-9H	Client	Encana
Field	Wattenberg	SIR No.	D5VO-00443
Engineer	Ryan Drilling/Ken Sovereign	Job Type	4.5" Production
Country	United States	Job Date	04-17-2015



Well Sprague 3H-9H
Field Wattenberg
Engineer Ryan Drilling/Ken Sovereign
Country United States

Client Encana
SIR No. D5VO-00443
Job Type 4.5" Production
Job Date 04-17-2015

Cement Slurry - 04/17/2015 08:57:26 to 04/17/2015 09:22:00



					Customer Encana			Job Number D5VO-00443	
Well Sprague 3H-9H 3H-9H			Location (legal) Cheyenne			Schlumberger Location Rock Springs		Job Start Apr/17/2015	
Field Wattenberg		Formation Name/Type Shale		Deviation 90 deg		Bit Size 6.1 in		Well MD 12985.0 ft	
County Weld		State/Province Colorado		BHP psi		BHST 215 degF		BHCT 215 degF	
Well Master 0631548285		API/UWI						Pore Press. Gradient lb/gal	
Rig Name Patterson 272		Drilled For Oil		Service Via Land		Casing/Liner			
						Depth, ft		Size, in	
						Weight, lb/ft		Grade	
Offshore Zone		Well Class New		Well Type Development		7815.0		7.0	
						12985.0		4.5	
						26.0		P110	
						13.5		P110	
Drilling Fluid Type Bentonite		Max. Density 11.30 lb/gal		Plastic Viscosity 22.000 cP		Tubing/Drill Pipe			
						T/D		Depth, ft	
						Size, in		Weight, lb/ft	
						Grade		Thread	
Service Line Cementing		Job Type 4.5" Production							
Max. Allowed Tub. Press psi		Max. Allowed Ann. Press psi		WH Connection Single Cement head		Perforations/Open Hole			
						Top, ft		Bottom, ft	
						shot/ft		No. of Shots	
								Total Interval ft	
						ft		ft	
						ft		ft	
						ft		ft	
						Diameter in			
						Treat Down Casing		Displacement 193.8 bbl	
						Packer Type		Packer Depth ft	
						Tubing Vol. bbl		Casing Vol. 193.8 bbl	
						Annular Vol. 145.3 bbl		Openhole Vol. 86.7 bbl	
Casing/Tubing Secured <input checked="" type="checkbox"/>		1 Hole Vol. Circulated prior to <input checked="" type="checkbox"/>				Casing Tools		Squeeze Job	
Lift Pressure psi						Shoe Type Float		Squeeze Type	
Pipe Rotated <input checked="" type="checkbox"/>		Pipe Reciprocated <input checked="" type="checkbox"/>				Shoe Depth 12985.0 ft		Tool Type	
No. Centralizers 30		Top Plugs		Bottom Plugs		Stage Tool Type		Tool Depth ft	
Cement Head Type Single						Stage Tool Depth ft		Tail Pipe Size in	
Job Scheduled For Apr/17/2015 05:00		Arrived on Location Apr/17/2015 05:00		Leave Location Apr/17/2015 12:00		Collar Type Float		Tail Pipe Depth ft	
						Collar Depth 12981.0 ft		Sqz. Total Vol. bbl	
Date	Time 24-hr clock	Treating Pressure PSI	Flow Rate B/M	Density LB/G	Volume BBL	Solid Fraction NULL	Message		
04/17/2015	05:41:26	27	3.7	8.36	12.5	0	Started Acquisition		
04/17/2015	05:41:27	18	2.7	8.36	12.5	0	Prime up Pump		
04/17/2015	05:42:26	57	2.0	8.36	12.9	0			
04/17/2015	05:43:26	66	2.3	8.37	15.1	0			
04/17/2015	05:44:26	223	4.2	8.37	18.5	0			
04/17/2015	05:45:26	384	4.8	8.36	22.5	0			
04/17/2015	05:46:26	104	0.0	8.37	25.3	0			
04/17/2015	05:47:26	13	0.0	8.37	25.3	0			
04/17/2015	05:48:26	15	0.9	8.37	25.6	0			
04/17/2015	05:49:26	8	0.0	8.37	25.7	0			
04/17/2015	05:50:26	7	0.0	8.37	25.7	0			
04/17/2015	05:51:26	7	0.0	8.37	0.0	0			
04/17/2015	05:52:26	7	0.0	8.37	0.0	0			
04/17/2015	05:53:26	7	0.0	8.36	0.0	0			
04/17/2015	05:54:26	7	0.0	8.36	0.0	0			
04/17/2015	05:55:26	7	0.0	8.36	0.0	0			
04/17/2015	05:56:26	7	0.0	8.36	0.0	0			
04/17/2015	05:57:26	7	0.0	8.36	0.0	0			
04/17/2015	05:58:26	7	0.0	8.36	0.0	0			
04/17/2015	05:59:26	8	0.0	8.37	0.0	0			
04/17/2015	06:00:26	8	0.0	8.37	0.0	0			

Well Sprague 3H-9H 3H-9H			Field Wattenberg		Job Start Apr/17/2015	Customer Encana		Job Number D5VO-00443
Date	Time 24-hr clock	Treating Pressure PSI	Flow Rate B/M	Density LB/G	Volume BBL	Solid Fraction NULL	Message	
04/17/2015	06:02:26	7	0.0	8.37	0.0	0		
04/17/2015	06:03:26	8	0.0	8.37	0.0	0		
04/17/2015	06:04:26	8	0.0	8.37	0.0	0		
04/17/2015	06:05:26	9	0.0	8.37	0.0	0		
04/17/2015	06:06:26	8	0.0	8.37	0.0	0		
04/17/2015	06:07:26	9	0.0	8.37	0.0	0		
04/17/2015	06:08:26	9	0.0	8.37	0.0	0		
04/17/2015	06:09:26	9	0.0	8.37	0.0	0		
04/17/2015	06:10:26	9	0.0	8.37	0.0	0		
04/17/2015	06:12:26	10	0.0	8.37	0.0	0		
04/17/2015	06:13:26	10	0.0	8.37	0.0	0		
04/17/2015	06:14:26	10	0.0	8.37	0.0	0		
04/17/2015	06:15:26	10	0.0	8.37	0.0	0		
04/17/2015	06:16:26	11	0.0	8.37	0.0	0		
04/17/2015	06:17:26	11	0.0	8.37	0.0	0		
04/17/2015	06:18:26	10	0.0	8.37	0.0	0		
04/17/2015	06:19:26	11	0.0	8.37	0.0	0		
04/17/2015	06:20:26	11	0.0	8.37	0.0	0		
04/17/2015	06:21:26	11	0.0	8.37	0.0	0		
04/17/2015	06:22:26	11	0.0	8.37	0.0	0		
04/17/2015	06:23:26	12	0.0	8.37	0.0	0		
04/17/2015	06:24:26	11	0.0	8.37	0.0	0		
04/17/2015	06:25:26	11	0.0	8.37	0.0	0		
04/17/2015	06:26:26	12	0.0	8.37	0.0	0		
04/17/2015	06:27:26	12	0.0	8.37	0.0	0		
04/17/2015	06:28:26	12	0.0	8.37	0.0	0		
04/17/2015	06:29:26	12	0.0	8.37	0.0	0		
04/17/2015	06:30:26	12	0.0	8.37	0.0	0		
04/17/2015	06:31:26	12	0.0	8.38	0.0	0		
04/17/2015	06:32:26	13	0.0	8.38	0.0	0		
04/17/2015	06:33:26	12	0.0	8.38	0.0	0		
04/17/2015	06:34:26	12	0.0	8.38	0.0	0		
04/17/2015	06:35:26	13	0.0	8.38	0.0	0		
04/17/2015	06:36:26	13	0.0	8.38	0.0	0		
04/17/2015	06:37:26	13	0.0	8.38	0.0	0		
04/17/2015	06:38:26	13	0.0	8.38	0.0	0		
04/17/2015	06:39:26	13	0.0	8.38	0.0	0		
04/17/2015	06:40:26	14	0.0	8.38	0.0	0		
04/17/2015	06:41:26	13	0.0	8.38	0.0	0		
04/17/2015	06:42:26	13	0.0	8.38	0.0	0		
04/17/2015	06:43:26	13	0.0	8.38	0.0	0		
04/17/2015	06:44:26	13	0.0	8.38	0.0	0		
04/17/2015	06:45:26	13	0.0	8.38	0.0	0		
04/17/2015	06:46:26	14	0.0	8.38	0.0	0		
04/17/2015	06:47:26	14	0.0	8.38	0.0	0		
04/17/2015	06:48:26	14	0.0	8.38	0.0	0		
04/17/2015	06:49:26	14	0.0	8.38	0.0	0		
04/17/2015	06:50:26	14	0.0	8.38	0.0	0		
04/17/2015	06:51:26	14	0.0	8.38	0.0	0		
04/17/2015	06:52:26	14	0.0	8.38	0.0	0		
04/17/2015	06:53:26	15	0.0	8.38	0.0	0		
04/17/2015	06:54:26	14	0.0	8.38	0.0	0		
04/17/2015	06:55:26	14	0.0	8.38	0.0	0		
04/17/2015	06:56:26	14	0.0	8.38	0.0	0		

Well			Field		Job Start		Customer		Job Number	
Sprague 3H-9H 3H-9H			Wattenberg		Apr/17/2015		Encana		D5VO-00443	
Date	Time 24-hr clock	Treating Pressure PSI	Flow Rate B/M	Density LB/G	Volume BBL	Solid Fraction NULL	Message			
04/17/2015	06:58:26	14	0.0	8.38	0.0	0				
04/17/2015	06:59:26	14	0.0	8.38	0.0	0				
04/17/2015	07:00:26	14	0.0	8.38	0.0	0				
04/17/2015	07:01:26	15	0.0	8.38	0.0	0				
04/17/2015	07:02:26	15	0.0	8.38	0.0	0				
04/17/2015	07:03:26	15	0.0	8.38	0.0	0				
04/17/2015	07:04:26	14	0.0	8.38	0.0	0				
04/17/2015	07:05:26	15	0.0	8.38	0.0	0				
04/17/2015	07:06:26	14	0.0	8.38	0.0	0				
04/17/2015	07:08:26	15	0.0	8.38	0.0	0				
04/17/2015	07:09:26	15	0.0	8.38	0.0	0				
04/17/2015	07:10:26	14	0.0	8.38	0.0	0				
04/17/2015	07:11:26	15	0.0	8.38	0.0	0				
04/17/2015	07:12:26	15	0.0	8.38	0.0	0				
04/17/2015	07:13:26	15	0.0	8.38	0.0	0				
04/17/2015	07:14:26	14	0.0	8.38	0.0	0				
04/17/2015	07:15:26	15	0.0	8.38	0.0	0				
04/17/2015	07:16:26	15	0.0	8.38	0.0	0				
04/17/2015	07:17:26	15	0.0	8.38	0.0	0				
04/17/2015	07:18:26	14	0.0	8.38	0.0	0				
04/17/2015	07:19:26	14	0.0	8.38	0.0	0				
04/17/2015	07:20:26	14	0.0	8.38	0.0	0				
04/17/2015	07:21:26	15	0.0	8.38	0.0	0				
04/17/2015	07:22:26	15	0.0	8.39	0.0	0				
04/17/2015	07:23:26	15	0.0	8.38	0.0	0				
04/17/2015	07:24:26	15	0.0	8.38	0.0	0				
04/17/2015	07:25:26	15	0.0	8.38	0.0	0				
04/17/2015	07:26:26	15	0.0	8.39	0.0	0				
04/17/2015	07:27:26	15	0.0	8.38	0.0	0				
04/17/2015	07:28:26	15	0.0	8.39	0.0	0				
04/17/2015	07:29:26	15	0.0	8.38	0.0	0				
04/17/2015	07:30:26	15	0.0	8.38	0.0	0				
04/17/2015	07:31:26	15	0.0	8.39	0.0	0				
04/17/2015	07:32:26	15	0.0	8.39	0.0	0				
04/17/2015	07:33:26	15	0.0	8.39	0.0	0				
04/17/2015	07:34:26	15	0.0	8.39	0.0	0				
04/17/2015	07:35:26	15	0.0	8.39	0.0	0				
04/17/2015	07:36:26	15	0.0	8.39	0.0	0				
04/17/2015	07:37:26	15	0.0	8.39	0.0	0				
04/17/2015	07:38:26	15	0.0	8.39	0.0	0				
04/17/2015	07:39:26	15	0.0	8.39	0.0	0				
04/17/2015	07:40:26	15	0.0	8.39	0.0	0				
04/17/2015	07:41:26	15	0.0	8.39	0.0	0				
04/17/2015	07:42:26	15	0.0	8.39	0.0	0				
04/17/2015	07:43:26	15	0.0	8.39	0.0	0				
04/17/2015	07:44:26	15	0.0	8.39	0.0	0				
04/17/2015	07:45:26	15	0.0	8.39	0.0	0				
04/17/2015	07:46:26	15	0.0	8.39	0.0	0				
04/17/2015	07:47:26	15	0.0	8.39	0.0	0				
04/17/2015	07:48:26	15	0.0	8.39	0.0	0				
04/17/2015	07:49:26	15	0.0	8.39	0.0	0				
04/17/2015	07:50:26	15	0.0	8.39	0.0	0				
04/17/2015	07:51:26	15	0.0	8.39	0.0	0				
04/17/2015	07:52:26	15	0.0	8.39	0.0	0				

Well Sprague 3H-9H 3H-9H			Field Wattenberg		Job Start Apr/17/2015		Customer Encana	Job Number D5VO-00443
Date	Time 24-hr clock	Treating Pressure PSI	Flow Rate B/M	Density LB/G	Volume BBL	Solid Fraction NULL	Message	
04/17/2015	07:54:26	15	0.0	8.39	0.0	0		
04/17/2015	07:55:26	14	0.0	8.39	0.0	0		
04/17/2015	07:56:26	15	0.0	8.39	0.0	0		
04/17/2015	07:57:26	15	0.0	8.39	0.0	0		
04/17/2015	07:58:26	15	0.0	8.39	0.0	0		
04/17/2015	07:59:26	15	0.0	8.39	0.0	0		
04/17/2015	08:00:26	15	0.0	8.39	0.0	0		
04/17/2015	08:01:26	15	0.0	8.39	0.0	0		
04/17/2015	08:02:26	15	0.0	8.39	0.0	0		
04/17/2015	08:03:26	15	0.0	8.39	0.0	0		
04/17/2015	08:04:26	15	0.0	8.39	0.0	0		
04/17/2015	08:05:26	15	0.0	8.39	0.0	0		
04/17/2015	08:06:26	15	0.0	8.39	0.0	0		
04/17/2015	08:07:26	15	0.0	8.39	0.0	0		
04/17/2015	08:08:26	15	0.0	8.39	0.0	0		
04/17/2015	08:09:26	15	0.0	8.39	0.0	0		
04/17/2015	08:10:26	14	0.0	8.39	0.0	0		
04/17/2015	08:11:26	14	0.0	8.39	0.0	0		
04/17/2015	08:12:26	15	0.0	8.39	0.0	0		
04/17/2015	08:13:26	14	0.0	8.39	0.0	0		
04/17/2015	08:14:26	15	0.0	8.39	0.0	0		
04/17/2015	08:15:26	14	0.0	8.39	0.0	0		
04/17/2015	08:16:26	15	0.0	8.39	0.0	0		
04/17/2015	08:17:26	14	0.0	8.39	0.0	0		
04/17/2015	08:18:12	14	0.0	8.39	0.0	0	Start Job	
04/17/2015	08:18:15	15	0.0	8.39	0.0	0	Held JSA	
04/17/2015	08:18:22	14	0.0	8.39	0.0	0	Start Pumping Water	
04/17/2015	08:18:26	15	0.0	8.39	0.0	0		
04/17/2015	08:18:27	15	0.0	8.39	0.0	0	Pressure Test Lines	
04/17/2015	08:19:26	14	0.0	8.39	0.0	0		
04/17/2015	08:20:26	14	0.0	8.39	0.0	0		
04/17/2015	08:21:26	14	0.0	8.39	0.0	0		
04/17/2015	08:22:26	14	0.0	8.39	0.0	0		
04/17/2015	08:22:56	14	0.0	8.39	0.0	0	Water Sample Tie #9247	
04/17/2015	08:23:26	14	0.0	8.39	0.0	0		
04/17/2015	08:24:26	14	0.0	8.39	0.0	0		
04/17/2015	08:25:26	14	0.0	8.39	0.0	0		
04/17/2015	08:26:26	14	0.0	8.39	0.0	0		
04/17/2015	08:27:26	11	0.0	8.39	0.1	0		
04/17/2015	08:28:26	16	0.7	8.38	0.2	0		
04/17/2015	08:29:26	222	1.4	8.38	1.1	0		
04/17/2015	08:30:26	55	0.0	8.38	3.9	0		
04/17/2015	08:31:26	60	0.0	8.38	3.9	0		
04/17/2015	08:32:26	60	0.0	8.38	3.9	0		
04/17/2015	08:33:26	1040	0.0	8.37	3.9	0		
04/17/2015	08:34:26	1010	0.0	8.38	3.9	0		
04/17/2015	08:35:26	984	0.0	8.38	3.9	0		
04/17/2015	08:36:26	964	0.0	8.38	3.9	0		
04/17/2015	08:37:26	5364	0.0	8.38	3.9	0		
04/17/2015	08:38:26	5319	0.0	8.38	3.9	0		
04/17/2015	08:39:26	5290	0.0	8.38	3.9	0		
04/17/2015	08:40:26	5266	0.0	8.38	3.9	0		
04/17/2015	08:41:26	23	0.0	8.37	3.9	0		
04/17/2015	08:42:26	52	0.0	8.37	0.0	0		

Well			Field		Job Start	Customer		Job Number
Sprague 3H-9H 3H-9H			Wattenberg		Apr/17/2015	Encana		D5VO-00443
Date	Time 24-hr clock	Treating Pressure PSI	Flow Rate B/M	Density LB/G	Volume BBL	Solid Fraction NULL	Message	
04/17/2015	08:44:26	51	0.0	8.37	0.0	0		
04/17/2015	08:45:26	51	0.0	8.37	0.0	0		
04/17/2015	08:45:53	52	0.0	8.37	0.0	0	Reset Total, Vol = 4 bbl	
04/17/2015	08:46:26	52	0.0	8.37	0.0	0		
04/17/2015	08:47:02	768	3.5	12.44	0.4	33	Start Pumping Spacer	
04/17/2015	08:47:26	868	4.5	12.45	2.2	33		
04/17/2015	08:48:26	932	4.6	12.58	7.8	33		
04/17/2015	08:49:26	849	4.5	12.52	12.3	32		
04/17/2015	08:50:26	823	4.5	12.56	16.8	32		
04/17/2015	08:51:26	819	4.5	12.55	21.4	32		
04/17/2015	08:52:26	804	4.5	12.56	25.9	25		
04/17/2015	08:53:26	788	4.5	12.55	30.5	16		
04/17/2015	08:53:55	801	4.6	12.55	32.6	16	End Spacer	
04/17/2015	08:53:57	802	4.5	12.55	32.8	16	Reset Total, Vol = 39 bbl	
04/17/2015	08:54:26	779	4.5	12.74	35.0	36		
04/17/2015	08:55:26	894	4.5	13.52	39.5	30		
04/17/2015	08:56:26	876	4.5	13.60	44.0	41		
04/17/2015	08:57:26	822	4.5	13.57	48.6	39	Start Cement Slurry	
04/17/2015	08:58:26	758	4.5	13.57	53.1	38		
04/17/2015	08:59:26	697	4.5	13.56	57.6	38		
04/17/2015	09:00:26	314	3.3	13.57	61.1	38		
04/17/2015	09:01:26	221	1.2	13.77	63.0	38		
04/17/2015	09:02:26	274	2.6	13.45	63.9	34		
04/17/2015	09:03:26	362	4.5	13.54	67.4	34		
04/17/2015	09:04:26	1122	5.8	13.55	72.5	35		
04/17/2015	09:05:26	1180	6.0	13.56	78.4	35		
04/17/2015	09:05:51	1151	6.0	13.57	81.0	35	CemNET added at 1 lb/bbl	
04/17/2015	09:05:52	1157	6.0	13.57	81.1	35	Wet and Dry Sample Taken	
04/17/2015	09:06:26	1109	6.0	13.58	84.5	35		
04/17/2015	09:07:26	1126	6.0	13.58	90.5	36		
04/17/2015	09:08:26	1057	6.0	13.59	96.5	36		
04/17/2015	09:09:26	1011	6.0	13.59	102.5	36		
04/17/2015	09:10:26	973	6.0	13.58	108.5	36		
04/17/2015	09:11:26	941	6.0	13.58	114.5	36		
04/17/2015	09:12:26	899	6.0	13.57	120.5	35		
04/17/2015	09:13:26	867	6.0	13.57	126.5	35		
04/17/2015	09:14:26	792	6.0	13.57	132.6	35		
04/17/2015	09:15:06	760	6.0	13.57	136.6	35	Good Returns	
04/17/2015	09:15:26	767	6.0	13.58	138.6	36		
04/17/2015	09:16:26	779	6.0	13.58	144.6	36		
04/17/2015	09:17:26	785	6.0	13.54	150.6	36		
04/17/2015	09:18:26	810	6.0	13.54	156.7	36		
04/17/2015	09:19:26	847	6.0	13.54	162.7	35		
04/17/2015	09:20:26	890	6.0	13.56	168.7	36		
04/17/2015	09:21:26	900	6.0	13.57	174.7	26		
04/17/2015	09:22:00	899	6.0	13.57	178.2	25	End Cement Slurry	
04/17/2015	09:22:26	922	6.0	13.59	180.8	40		
04/17/2015	09:23:17	67	1.2	14.35	183.8	77	Reset Total, Vol = 143 bbl	
04/17/2015	09:23:26	53	0.1	13.99	183.9	0		
04/17/2015	09:23:37	52	0.1	14.00	183.9	0	Washup Pump and Line	
04/17/2015	09:24:26	50	0.0	14.01	183.9	0		
04/17/2015	09:25:26	49	0.0	14.00	184.0	0		
04/17/2015	09:26:26	48	0.0	13.99	184.0	0		
04/17/2015	09:27:26	45	0.0	13.99	184.0	0		

Well Sprague 3H-9H 3H-9H			Field Wattenberg		Job Start Apr/17/2015		Customer Encana	Job Number D5VO-00443
Date	Time 24-hr clock	Treating Pressure PSI	Flow Rate B/M	Density LB/G	Volume BBL	Solid Fraction NULL	Message	
04/17/2015	09:29:26	43	0.0	13.99	184.1	0		
04/17/2015	09:30:26	42	0.0	13.99	184.2	0		
04/17/2015	09:31:26	41	0.0	14.00	184.2	0		
04/17/2015	09:32:26	86	0.8	8.74	0.1	77		
04/17/2015	09:33:26	219	4.2	8.78	2.0	77		
04/17/2015	09:34:26	234	4.4	8.41	6.3	77		
04/17/2015	09:35:26	220	4.2	9.41	9.3	26		
04/17/2015	09:36:26	45	0.0	4.23	13.0	0		
04/17/2015	09:37:26	211	4.2	8.48	29.5	28		
04/17/2015	09:38:26	32	0.0	8.56	30.6	0		
04/17/2015	09:39:26	120	4.2	8.38	34.5	5		
04/17/2015	09:40:26	90	2.0	8.33	34.8	0		
04/17/2015	09:41:26	46	0.0	8.30	38.1	0		
04/17/2015	09:42:26	36	0.0	8.37	38.1	0		
04/17/2015	09:43:26	35	0.0	8.37	38.1	0		
04/17/2015	09:44:26	36	0.1	8.35	0.0	0		
04/17/2015	09:45:26	311	6.4	8.37	4.1	0		
04/17/2015	09:45:56	310	6.4	8.37	7.3	0	Reset Total, Vol = 46.07 bbl	
04/17/2015	09:45:57	310	6.4	8.37	7.4	0	Drop Top Plug	
04/17/2015	09:45:59	317	6.4	8.37	7.6	0	Start Displacement	
04/17/2015	09:46:05	384	6.1	8.37	8.3	0	Drop Ball	
04/17/2015	09:46:26	351	6.9	8.37	10.7	0		
04/17/2015	09:47:26	1113	6.8	8.37	17.6	0		
04/17/2015	09:48:26	1248	7.0	8.36	24.5	0		
04/17/2015	09:49:26	1328	7.0	8.36	31.5	0		
04/17/2015	09:50:06	1355	7.0	8.36	36.2	0	Good Returns	
04/17/2015	09:50:26	1338	7.0	8.36	38.6	0		
04/17/2015	09:51:26	1493	7.0	8.36	45.5	0		
04/17/2015	09:52:26	1593	7.0	8.36	52.5	0		
04/17/2015	09:53:26	1733	6.9	8.36	59.5	0		
04/17/2015	09:54:26	1889	6.9	8.36	66.4	0		
04/17/2015	09:55:26	2011	7.0	8.36	73.4	0		
04/17/2015	09:56:26	1795	5.9	8.36	79.6	0		
04/17/2015	09:57:26	1944	5.9	8.36	85.5	0		
04/17/2015	09:58:26	2045	5.9	8.35	91.3	0		
04/17/2015	09:59:26	1938	5.1	8.36	96.7	0		
04/17/2015	10:00:26	2011	5.1	8.36	101.8	0		
04/17/2015	10:01:26	1926	4.5	8.36	106.6	0		
04/17/2015	10:02:26	1993	4.4	8.36	111.1	0		
04/17/2015	10:03:26	2054	4.4	8.36	115.5	0		
04/17/2015	10:04:26	2003	4.0	8.36	119.8	0		
04/17/2015	10:05:26	2006	4.0	8.36	123.8	0		
04/17/2015	10:06:26	1968	4.0	8.36	127.8	0		
04/17/2015	10:07:26	2014	4.0	8.36	131.9	0		
04/17/2015	10:08:26	2019	4.0	8.36	135.9	0		
04/17/2015	10:09:26	2014	4.0	8.37	139.9	0		
04/17/2015	10:10:26	1974	4.0	8.37	143.9	0		
04/17/2015	10:11:26	2044	4.0	8.37	147.9	0		
04/17/2015	10:12:26	2043	4.0	8.37	151.9	0		
04/17/2015	10:13:26	2068	4.0	8.37	156.0	0		
04/17/2015	10:14:26	2126	4.0	8.37	160.0	0		
04/17/2015	10:15:26	2131	4.0	8.37	164.0	0		
04/17/2015	10:16:26	2125	4.0	8.37	168.0	0		
04/17/2015	10:17:26	2179	4.0	8.37	172.0	0		

Well			Field		Job Start		Customer		Job Number	
Sprague 3H-9H 3H-9H			Wattenberg		Apr/17/2015		Encana		D5VO-00443	
Date	Time 24-hr clock	Treating Pressure PSI	Flow Rate B/M	Density LB/G	Volume BBL	Solid Fraction NULL	Message			
04/17/2015	10:19:26	2233	4.0	8.37	180.1	0				
04/17/2015	10:20:26	2233	4.0	8.37	184.1	0				
04/17/2015	10:21:26	1883	2.0	8.37	186.5	0				
04/17/2015	10:22:26	1897	2.0	8.37	188.5	0				
04/17/2015	10:23:26	1909	2.0	8.37	190.6	0				
04/17/2015	10:24:26	1934	2.1	8.37	192.6	0				
04/17/2015	10:25:26	2446	2.0	8.37	194.7	0				
04/17/2015	10:26:26	2558	0.0	8.37	194.8	0				
04/17/2015	10:27:01	2484	0.0	8.37	194.8	0	Bump Top Plug			
04/17/2015	10:27:02	2510	0.0	8.37	194.8	0	End Displacement			
04/17/2015	10:27:03	2546	0.0	8.37	194.8	0	Reset Total, Vol = 193.3 bbl			
04/17/2015	10:27:26	2539	0.0	8.37	194.8	0				
04/17/2015	10:28:26	2545	0.0	8.37	194.8	0				
04/17/2015	10:29:26	2569	0.0	8.38	194.8	0				
04/17/2015	10:30:26	2589	0.0	8.37	194.8	0				
04/17/2015	10:31:26	2610	0.0	8.38	194.8	0				
04/17/2015	10:32:26	2170	0.0	8.38	194.8	0				
04/17/2015	10:33:26	36	0.0	8.38	194.8	0				
04/17/2015	10:33:37	36	0.0	8.38	194.8	0	Floats Hold, 2 Bbl Back			
04/17/2015	10:34:26	37	0.0	8.38	194.8	0				
04/17/2015	10:35:19	37	0.0	8.38	194.8	0	End Job			

Post Job Summary

Average Pump Rates, bbl/min					Volume of Fluid Injected, bbl			
Slurry 4.0	N2	Mud	Maximum Rate 38.0		Total Slurry 143.0	Mud 0.0	Spacer 39.0	N2
Treating Pressure Summary, psi					Breakdown Fluid			
Maximum 5405	Final 37	Average 519	Bump Plug to 2450	Breakdown	Type	Volume bbl	Density lb/gal	
Avg. N2 Percent %		Designed Slurry Volume 143.0 bbl		Displacement 193.3 bbl	Mix Water Temp 65 degF	Cement Circulated to Surface? <input type="checkbox"/>		Volume bbl
						Washed Thru Perfs <input type="checkbox"/>		To ft
Customer or Authorized Representative Norman McCreary			Schlumberger Supervisor Ryan Drilling/Ken Sovereign			Circulation Lost <input type="checkbox"/>		Job Completed <input checked="" type="checkbox"/>
						-		-