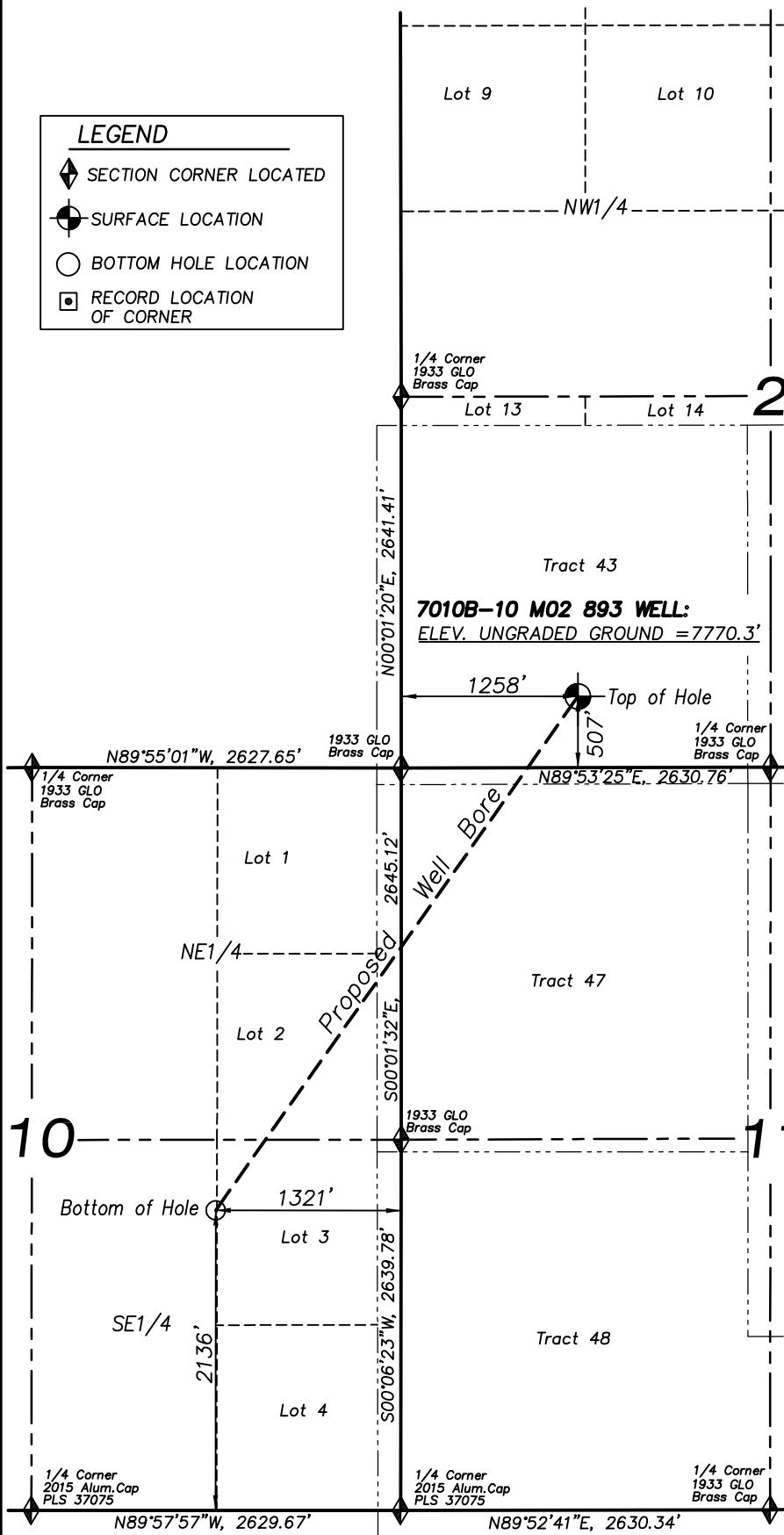


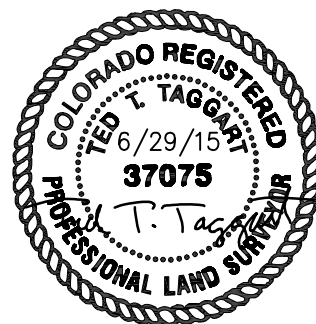
T8S, R93W, 6TH P.M.

LEGEND

- ◆ SECTION CORNER LOCATED
- SURFACE LOCATION
- BOTTOM HOLE LOCATION
- RECORD LOCATION OF CORNER



CERTIFICATE OF SURVEYOR
I, TED TAGGART OF FRUITA, COLORADO HEREBY CERTIFY THAT THIS MAP WAS MADE FROM NOTES TAKEN DURING AN ACTUAL SURVEY MADE BY ME OR UNDER MY DIRECTION FOR ENCANA OIL & GAS (USA) INC. AND THAT THIS LOCATION HAS BEEN STAKED ON THE GROUND AS SHOWN HEREON.



7010B-10 M02 893 WELL
(WELLHEAD LOCATION) NAD 83
LATITUDE = 39.386999° N
LONGITUDE = 107.746208° W
(BOTTOM HOLE LOCATION) NAD 83
LATITUDE = 39.376958° N
LONGITUDE = 107.755323° W

NOTES

1. WELL FOOTAGES ARE MEASURED AT RIGHT ANGLES TO SECTION LINES.
2. BASIS OF BEARING: GEODETIC- BASED ON GPS OBSERVATIONS.
3. ELEVATIONS BASED ON GPS OBSERVATIONS, NAVD 88 (GEOID 03), POST PROCESSED USING NGS OPUS.
4. THE BOTTOM HOLE BEARS S35°11'27"W, 4475' FROM TOP OF HOLE.
5. SEE ADDENDUM TO LEGAL PLAT (SHEET 1f) FOR VISIBLE IMPROVEMENTS WITHIN 500 FEET OF THE PROPOSED OIL & GAS LOCATION.
6. ALL GPS PROCEDURES COMPLY WITH COGCC RULE NO. 215. PDOP READING: 1.4
GPS OPERATOR: B. TAGGART JUNE 18, 2015

MAP to ACCOMPANY
APPLICATION for PERMIT to DRILL
Encana Oil & Gas (USA) Inc.
MCU 7010B-10 M02 893 Well

SW1/4 SW1/4, SECTION 2
T8S, R93W, 6th P.M.
GARFIELD COUNTY, COLORADO



906 Main Street
Evanston, Wyoming 82930
Phone No. (307) 789-4545

Location Plat		Scale: 1" = 1200'	SHEET 1b OF 10
Project	14-04-09	Date	
Date	6/18/15	Surveyed:	
Drawn:	6/18/15	Latest Revision Date: 6/29/15	