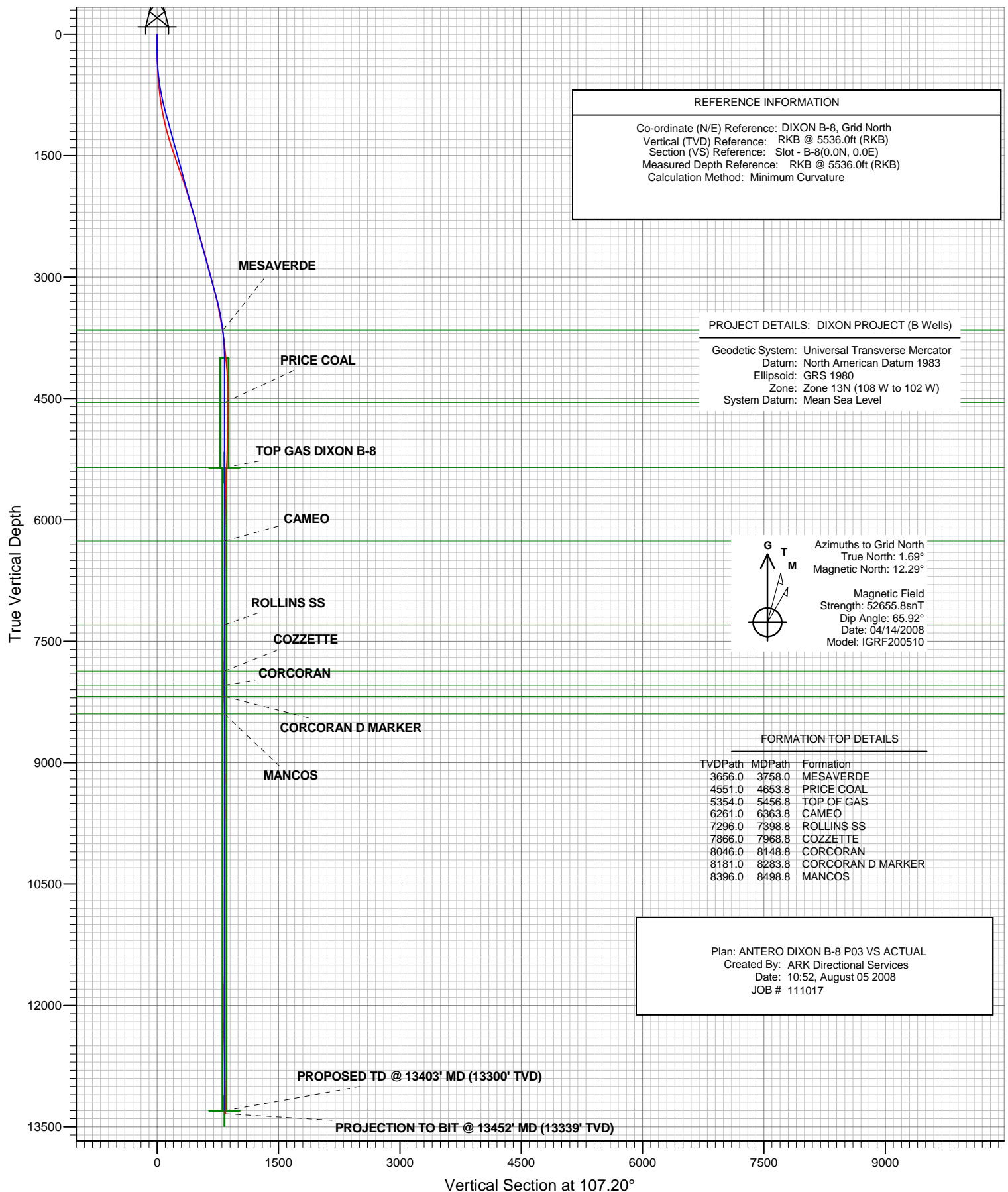




ANTERO RESOURCES

ANTERO DIXON B-8

PLANNED VS ACTUAL



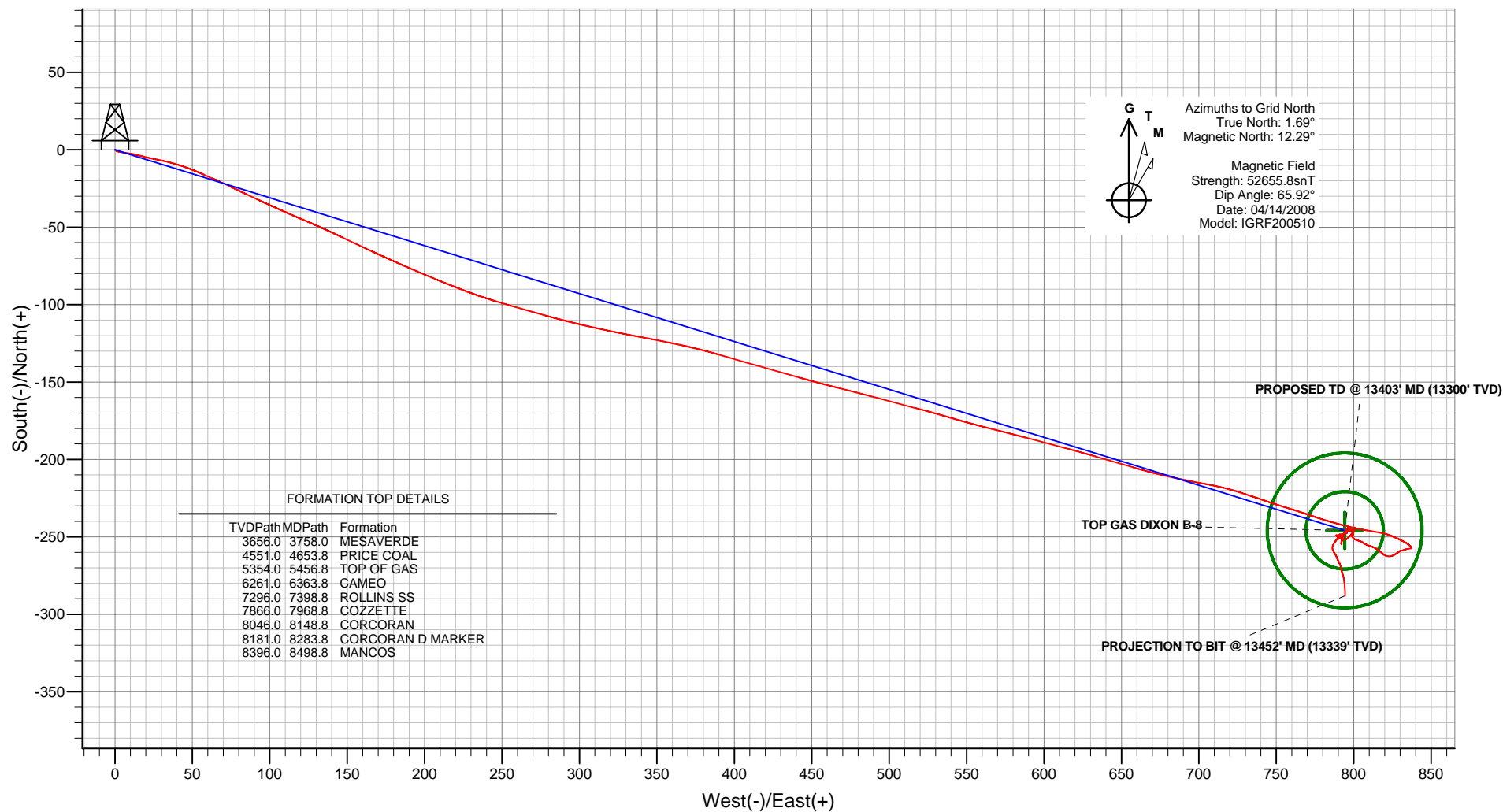


ANTERO RESOURCES

ANTERO DIXON B-8 PLANNED VS ACTUAL



PLAN VIEW



Plan: ANTERO DIXON B-8 P03 VS ACTUAL
Created By: ARK Directional Services
Date: 10:56, August 05 2008
JOB # 111017

PROJECT DETAILS: DIXON PROJECT (B Wells)

Geodetic System: Universal Transverse Mercator
Datum: North American Datum 1983
Ellipsoid: GRS 1980
Zone: Zone 13N (108 W to 102 W)
System Datum: Mean Sea Level

REFERENCE INFORMATION

Co-ordinate (N/E) Reference: DIXON B-8, Grid North
Vertical (TVD) Reference: RKB @ 5536.0ft (RKB)
Section (VS) Reference: Slot - B-8(0.0N, 0.0E)
Measured Depth Reference: RKB @ 5536.0ft (RKB)
Calculation Method: Minimum Curvature

ANTERO RESOURCES

DIXON PROJECT (B Wells)

BRONCO 4

Survey: ANTERO DIXON B8 SURVEY

Standard Survey Report

05 August, 2008

Survey Report

Company:	ANTERO RESOURCES	Local Co-ordinate Reference:	Well DIXON B-8 (111017) - Slot B-8
Project:	DIXON PROJECT (B Wells)	TVD Reference:	RKB @ 5536.0ft (RKB)
Site:	BRONCO 4	MD Reference:	RKB @ 5536.0ft (RKB)
Well:	DIXON B-8 (111017)	North Reference:	Grid
Wellbore:	ANTERO DIXON B-8	Survey Calculation Method:	Minimum Curvature
Design:	ANTERO DIXON B-8	Database:	EDMDB

Project	DIXON PROJECT (B Wells)		
Map System:	Universal Transverse Mercator	System Datum:	Mean Sea Level
Geo Datum:	North American Datum 1983		
Map Zone:	Zone 13N (108 W to 102 W)		

Site	BRONCO 4		
Site Position:		Northing:	14,364,517.56 ft
From:	Map	Easting:	890,418.04 ft
Position Uncertainty:	0.0 ft	Slot Radius:	in
		Latitude:	39° 31' 26.656 N
		Longitude:	107° 39' 34.283 W
		Grid Convergence:	-1.69 °

Well	DIXON B-8 (111017) - Slot B-8		
Well Position	+N/-S	0.0 ft	Northing:
	+E/-W	0.0 ft	Easting:
Position Uncertainty	0.0 ft	Wellhead Elevation:	ft
		Latitude:	39° 31' 26.656 N
		Longitude:	107° 39' 34.283 W
		Ground Level:	5,520.0 ft

Wellbore	ANTERO DIXON B-8				
Magnetics	Model Name	Sample Date	Declination (°)	Dip Angle (°)	Field Strength (nT)
	IGRF200510	04/14/2008	10.59	65.92	52,656

Design	ANTERO DIXON B-8			
Audit Notes:				
Version:	1.0	Phase:	ACTUAL	Tie On Depth:
Vertical Section:	Depth From (TVD)	+N/-S	+E/-W	Direction
	(ft)	(ft)	(ft)	(°)
	0.0	0.0	0.0	104.87

Survey Program	Date	08/05/2008		
From (ft)	To (ft)	Survey (Wellbore)	Tool Name	Description
163.0	13,452.0	ANTERO DIXON B8 SURVEY (ANTERO	MWD	MWD - Standard

Survey									
Measured Depth (ft)	Inclination (°)	Azimuth (°)	Vertical Depth (ft)	+N/-S (ft)	+E/-W (ft)	Vertical Section (ft)	Dogleg Rate (°/100ft)	Build Rate (°/100ft)	Turn Rate (°/100ft)
0.0	0.00	0.00	0.0	0.0	0.0	0.0	0.00	0.00	0.00
163.0	0.20	137.80	163.0	-0.2	0.2	0.2	0.12	0.12	0.00
193.0	0.40	106.90	193.0	-0.3	0.3	0.4	0.83	0.67	-103.00
224.0	0.50	136.10	224.0	-0.4	0.5	0.6	0.80	0.32	94.19
254.0	0.60	122.70	254.0	-0.6	0.7	0.9	0.54	0.33	-44.67
285.0	0.90	109.70	285.0	-0.8	1.1	1.3	1.11	0.97	-41.94
316.0	1.30	111.40	316.0	-1.0	1.7	1.9	1.29	1.29	5.48
346.0	1.80	103.00	346.0	-1.2	2.4	2.7	1.83	1.67	-28.00
377.0	2.20	100.50	377.0	-1.4	3.5	3.8	1.32	1.29	-8.06
407.0	2.50	99.10	406.9	-1.6	4.7	5.0	1.02	1.00	-4.67
438.0	3.10	99.50	437.9	-1.9	6.2	6.5	1.94	1.94	1.29
468.0	3.20	97.70	467.9	-2.1	7.8	8.1	0.47	0.33	-6.00
499.0	3.60	100.50	498.8	-2.4	9.7	10.0	1.40	1.29	9.03

Survey Report

Company:	ANTERO RESOURCES	Local Co-ordinate Reference:	Well DIXON B-8 (111017) - Slot B-8
Project:	DIXON PROJECT (B Wells)	TVD Reference:	RKB @ 5536.0ft (RKB)
Site:	BRONCO 4	MD Reference:	RKB @ 5536.0ft (RKB)
Well:	DIXON B-8 (111017)	North Reference:	Grid
Wellbore:	ANTERO DIXON B-8	Survey Calculation Method:	Minimum Curvature
Design:	ANTERO DIXON B-8	Database:	EDMDB

Survey									
Measured Depth (ft)	Inclination (°)	Azimuth (°)	Vertical Depth (ft)	+N/-S (ft)	+E/-W (ft)	Vertical Section (ft)	Dogleg Rate (°/100ft)	Build Rate (°/100ft)	Turn Rate (°/100ft)
530.0	4.00	99.80	529.7	-2.8	11.7	12.0	1.30	1.29	-2.26
561.0	4.60	104.00	560.6	-3.3	13.9	14.3	2.18	1.94	13.55
591.0	4.90	103.70	590.5	-3.9	16.4	16.8	1.00	1.00	-1.00
622.0	5.40	104.40	621.4	-4.5	19.1	19.6	1.63	1.61	2.26
653.0	5.90	103.00	652.3	-5.2	22.0	22.6	1.67	1.61	-4.52
683.0	6.10	101.20	682.1	-5.9	25.1	25.8	0.92	0.67	-6.00
714.0	6.60	101.60	712.9	-6.6	28.5	29.2	1.62	1.61	1.29
745.0	7.00	102.30	743.7	-7.3	32.0	32.9	1.32	1.29	2.26
775.0	7.50	105.10	773.4	-8.2	35.7	36.6	2.04	1.67	9.33
806.0	7.80	106.50	804.2	-9.4	39.7	40.8	1.14	0.97	4.52
837.0	8.40	108.30	834.9	-10.7	43.9	45.1	2.10	1.94	5.81
868.0	8.80	110.40	865.5	-12.2	48.2	49.7	1.64	1.29	6.77
898.0	9.50	113.00	895.1	-14.0	52.7	54.5	2.71	2.33	8.67
928.0	10.00	113.60	924.7	-16.0	57.3	59.5	1.70	1.67	2.00
959.0	10.60	113.60	955.2	-18.2	62.4	65.0	1.94	1.94	0.00
990.0	11.30	114.60	985.6	-20.6	67.8	70.8	2.34	2.26	3.23
1,020.0	12.00	114.60	1,015.0	-23.1	73.3	76.8	2.33	2.33	0.00
1,049.0	12.20	116.40	1,043.4	-25.8	78.8	82.7	1.47	0.69	6.21
1,081.0	12.90	115.00	1,074.6	-28.8	85.0	89.6	2.38	2.19	-4.37
1,113.0	13.40	115.00	1,105.8	-31.8	91.6	96.7	1.56	1.56	0.00
1,144.0	14.10	114.60	1,135.9	-34.9	98.3	104.0	2.28	2.26	-1.29
1,176.0	14.40	114.30	1,166.9	-38.2	105.5	111.8	0.97	0.94	-0.94
1,208.0	15.30	113.60	1,197.8	-41.5	113.0	119.9	2.87	2.81	-2.19
1,239.0	15.80	112.80	1,227.7	-44.8	120.6	128.1	1.75	1.61	-2.58
1,275.0	16.50	113.60	1,262.3	-48.7	129.8	138.0	2.04	1.94	2.22
1,307.0	17.00	115.00	1,292.9	-52.5	138.2	147.1	2.01	1.56	4.37
1,338.0	17.50	115.30	1,322.5	-56.4	146.6	156.1	1.64	1.61	0.97
1,370.0	17.90	115.30	1,353.0	-60.6	155.4	165.7	1.25	1.25	0.00
1,400.0	17.90	115.00	1,381.6	-64.5	163.7	174.8	0.31	0.00	-1.00
1,432.0	17.90	114.30	1,412.0	-68.6	172.6	184.5	0.67	0.00	-2.19
1,464.0	18.30	113.90	1,442.4	-72.7	181.7	194.3	1.31	1.25	-1.25
1,496.0	18.50	113.20	1,472.8	-76.7	191.0	204.3	0.93	0.62	-2.19
1,555.0	18.60	112.50	1,528.7	-84.0	208.3	222.9	0.41	0.17	-1.19
1,618.0	18.90	110.70	1,588.4	-91.5	227.1	243.0	1.03	0.48	-2.86
1,680.0	19.80	106.50	1,646.9	-98.0	246.6	263.4	2.67	1.45	-6.77
1,775.0	19.80	105.50	1,736.3	-106.9	277.5	295.6	0.36	0.00	-1.05
1,869.0	19.00	102.60	1,824.9	-114.5	307.8	326.8	1.33	-0.85	-3.09
1,963.0	17.40	100.50	1,914.2	-120.4	336.5	356.1	1.84	-1.70	-2.23
2,058.0	16.80	101.90	2,005.0	-125.8	363.9	384.0	0.77	-0.63	1.47
2,152.0	16.40	106.20	2,095.1	-132.3	390.0	410.8	1.37	-0.43	4.57
2,247.0	16.40	105.80	2,186.2	-139.7	415.7	437.7	0.12	0.00	-0.42
2,343.0	16.60	105.80	2,278.3	-147.1	442.0	464.9	0.21	0.21	0.00
2,435.0	15.50	104.00	2,366.7	-153.6	466.6	490.4	1.31	-1.20	-1.96
2,530.0	15.70	104.80	2,458.2	-160.0	491.3	515.9	0.31	0.21	0.84
2,625.0	15.70	104.80	2,549.7	-166.6	516.2	541.6	0.00	0.00	0.00
2,719.0	16.00	106.20	2,640.1	-173.4	540.9	567.3	0.52	0.32	1.49
2,814.0	15.10	104.00	2,731.6	-180.1	565.5	592.7	1.13	-0.95	-2.32
2,908.0	14.70	104.80	2,822.4	-186.1	588.9	616.9	0.48	-0.43	0.85
3,001.0	14.60	104.80	2,912.4	-192.1	611.6	640.4	0.11	-0.11	0.00
3,095.0	14.40	106.20	3,003.4	-198.4	634.3	664.0	0.43	-0.21	1.49
3,191.0	14.40	106.20	3,096.4	-205.0	657.2	687.8	0.00	0.00	0.00
3,289.0	14.80	102.60	3,191.2	-211.2	681.1	712.5	1.01	0.41	-3.67
3,384.0	13.80	100.20	3,283.3	-215.8	704.1	735.9	1.22	-1.05	-2.53
3,479.0	11.10	107.20	3,376.1	-220.5	724.0	756.4	3.25	-2.84	7.37

Survey Report

Company:	ANTERO RESOURCES	Local Co-ordinate Reference:	Well DIXON B-8 (111017) - Slot B-8
Project:	DIXON PROJECT (B Wells)	TVD Reference:	RKB @ 5536.0ft (RKB)
Site:	BRONCO 4	MD Reference:	RKB @ 5536.0ft (RKB)
Well:	DIXON B-8 (111017)	North Reference:	Grid
Wellbore:	ANTERO DIXON B-8	Survey Calculation Method:	Minimum Curvature
Design:	ANTERO DIXON B-8	Database:	EDMDB

Survey									
Measured Depth (ft)	Inclination (°)	Azimuth (°)	Vertical Depth (ft)	+N/-S (ft)	+E/-W (ft)	Vertical Section (ft)	Dogleg Rate (°/100ft)	Build Rate (°/100ft)	Turn Rate (°/100ft)
3,574.0	10.90	109.00	3,469.3	-226.2	741.3	774.5	0.42	-0.21	1.89
3,664.0	10.00	106.90	3,557.8	-231.2	756.8	790.8	1.09	-1.00	-2.33
3,764.0	9.00	109.00	3,656.5	-236.3	772.5	807.2	1.06	-1.00	2.10
3,858.0	7.80	105.80	3,749.4	-240.4	785.6	821.0	1.37	-1.28	-3.40
3,953.0	5.80	104.00	3,843.8	-243.3	796.4	832.2	2.12	-2.11	-1.89
4,048.0	5.80	100.20	3,938.3	-245.3	805.8	841.8	0.40	0.00	-4.00
4,144.0	6.10	99.10	4,033.8	-247.0	815.6	851.7	0.33	0.31	-1.15
4,238.0	4.80	112.80	4,127.3	-249.3	824.2	860.6	1.95	-1.38	14.57
4,333.0	3.10	115.60	4,222.1	-252.0	830.2	867.0	1.80	-1.79	2.95
4,424.0	3.00	122.70	4,313.0	-254.3	834.4	871.7	0.43	-0.11	7.80
4,519.0	1.20	147.60	4,407.9	-256.5	837.0	874.8	2.08	-1.89	26.21
4,614.0	0.80	260.50	4,502.9	-257.4	836.9	874.9	1.77	-0.42	118.84
4,709.0	0.30	260.50	4,597.9	-257.6	836.0	874.1	0.53	-0.53	0.00
4,803.0	0.90	264.70	4,691.9	-257.7	835.0	873.2	0.64	0.64	4.47
4,898.0	1.80	249.20	4,786.9	-258.3	832.9	871.3	1.01	0.95	-16.32
4,992.0	1.10	264.70	4,880.8	-258.9	830.6	869.2	0.85	-0.74	16.49
5,087.0	0.80	222.20	4,975.8	-259.5	829.2	868.1	0.78	-0.32	-44.74
5,182.0	2.40	237.60	5,070.8	-261.0	827.1	866.4	1.73	1.68	16.21
5,277.0	1.60	255.60	5,165.7	-262.4	824.2	863.9	1.06	-0.84	18.95
5,371.0	1.90	284.80	5,259.7	-262.4	821.4	861.2	0.99	0.32	31.06
5,465.0	2.30	312.20	5,353.6	-260.7	818.5	858.0	1.14	0.43	29.15
5,466.5	2.30	312.10	5,355.2	-260.7	818.4	857.9	0.28	0.10	-6.45
TOP GAS DIXON B-8									
5,557.0	2.40	306.50	5,445.6	-258.3	815.6	854.5	0.28	0.11	-6.19
5,652.0	1.70	289.00	5,540.5	-256.7	812.6	851.3	0.98	-0.74	-18.42
5,748.0	2.20	289.30	5,636.4	-255.6	809.5	848.0	0.52	0.52	0.31
5,843.0	1.80	305.80	5,731.4	-254.1	806.6	844.8	0.73	-0.42	17.37
5,938.0	1.40	289.30	5,826.3	-252.9	804.3	842.3	0.64	-0.42	-17.37
6,030.0	1.60	284.80	5,918.3	-252.2	802.0	839.9	0.25	0.22	-4.89
6,127.0	1.70	318.10	6,015.3	-250.8	799.7	837.3	0.98	0.10	34.33
6,219.0	1.00	341.70	6,107.3	-249.0	798.6	835.7	0.96	-0.76	25.65
6,315.0	0.40	63.60	6,203.2	-248.0	798.6	835.5	1.07	-0.62	85.31
6,409.0	0.70	133.20	6,297.2	-248.3	799.3	836.3	0.72	0.32	74.04
6,502.0	0.30	9.50	6,390.2	-248.4	799.8	836.7	0.97	-0.43	-133.01
6,597.0	0.50	3.90	6,485.2	-247.8	799.8	836.6	0.21	0.21	-5.89
6,693.0	0.90	353.70	6,581.2	-246.6	799.8	836.3	0.43	0.42	-10.62
6,787.0	0.80	259.40	6,675.2	-246.0	799.1	835.4	1.33	-0.11	-100.32
6,881.0	0.70	270.70	6,769.2	-246.1	797.8	834.3	0.19	-0.11	12.02
6,976.0	0.80	246.40	6,864.2	-246.4	796.7	833.2	0.35	0.11	-25.58
7,071.0	0.30	326.90	6,959.2	-246.4	795.9	832.5	0.85	-0.53	84.74
7,165.0	0.40	178.60	7,053.2	-246.5	795.8	832.4	0.72	0.11	-157.77
7,260.0	0.50	198.60	7,148.2	-247.3	795.7	832.5	0.19	0.11	21.05
7,354.0	0.50	259.80	7,242.2	-247.7	795.1	832.1	0.54	0.00	65.11
7,449.0	0.60	263.00	7,337.2	-247.9	794.2	831.2	0.11	0.11	3.37
7,544.0	0.90	241.60	7,432.2	-248.3	793.1	830.2	0.43	0.32	-22.53
7,639.0	1.20	221.50	7,527.2	-249.4	791.8	829.2	0.50	0.32	-21.16
7,731.0	0.80	201.10	7,619.2	-250.7	790.9	828.7	0.58	-0.43	-22.17
7,827.0	0.30	265.10	7,715.2	-251.3	790.4	828.4	0.75	-0.52	66.67
7,921.0	0.50	337.10	7,809.2	-251.0	790.0	827.9	0.53	0.21	76.60
8,016.0	0.80	338.20	7,904.1	-250.0	789.6	827.3	0.32	0.32	1.16
8,110.0	0.60	318.10	7,998.1	-249.0	789.0	826.5	0.33	-0.21	-21.38
8,204.0	0.50	179.60	8,092.1	-249.1	788.7	826.2	1.09	-0.11	-147.34
8,298.0	0.90	102.30	8,186.1	-249.6	789.4	827.0	0.99	0.43	-82.23
8,394.0	1.10	123.40	8,282.1	-250.3	790.9	828.7	0.43	0.21	21.98

Survey Report

Company:	ANTERO RESOURCES	Local Co-ordinate Reference:	Well DIXON B-8 (111017) - Slot B-8
Project:	DIXON PROJECT (B Wells)	TVD Reference:	RKB @ 5536.0ft (RKB)
Site:	BRONCO 4	MD Reference:	RKB @ 5536.0ft (RKB)
Well:	DIXON B-8 (111017)	North Reference:	Grid
Wellbore:	ANTERO DIXON B-8	Survey Calculation Method:	Minimum Curvature
Design:	ANTERO DIXON B-8	Database:	EDMDB

Survey										
Measured Depth (ft)	Inclination (°)	Azimuth (°)	Vertical Depth (ft)	+N/-S (ft)	+E/-W (ft)	Vertical Section (ft)	Dogleg Rate (°/100ft)	Build Rate (°/100ft)	Turn Rate (°/100ft)	
8,489.0	1.30	113.50	8,377.1	-251.2	792.7	830.6	0.30	0.21	-10.42	
8,584.0	1.30	86.10	8,472.1	-251.6	794.7	832.7	0.65	0.00	-28.84	
8,679.0	1.40	34.10	8,567.0	-250.5	796.5	834.1	1.25	0.11	-54.74	
8,775.0	0.80	65.40	8,663.0	-249.3	797.7	835.0	0.86	-0.62	32.60	
8,869.0	0.40	28.10	8,757.0	-248.7	798.5	835.6	0.57	-0.43	-39.68	
8,964.0	0.40	36.20	8,852.0	-248.2	798.8	835.8	0.06	0.00	8.53	
9,058.0	0.30	349.80	8,946.0	-247.7	799.0	835.8	0.31	-0.11	-49.36	
9,151.0	1.00	186.00	9,039.0	-248.2	798.9	835.8	1.39	0.75	-176.13	
9,247.0	0.50	67.50	9,135.0	-248.9	799.1	836.3	1.37	-0.52	-123.44	
9,341.0	1.60	9.10	9,229.0	-247.5	799.7	836.5	1.49	1.17	-62.13	
9,437.0	1.10	14.40	9,325.0	-245.2	800.2	836.3	0.54	-0.52	5.52	
9,531.0	0.40	7.00	9,419.0	-244.0	800.4	836.3	0.75	-0.74	-7.87	
9,626.0	0.50	155.00	9,514.0	-244.1	800.7	836.5	0.91	0.11	155.79	
9,720.0	0.50	188.40	9,608.0	-244.9	800.8	836.8	0.31	0.00	35.53	
9,814.0	0.80	253.10	9,702.0	-245.5	800.1	836.3	0.79	0.32	68.83	
9,909.0	1.00	273.10	9,796.9	-245.6	798.6	834.9	0.39	0.21	21.05	
10,004.0	0.70	319.20	9,891.9	-245.1	797.4	833.6	0.76	-0.32	48.53	
10,100.0	0.70	348.00	9,987.9	-244.1	796.9	832.9	0.36	0.00	30.00	
10,194.0	0.40	183.10	10,081.9	-243.9	796.8	832.7	1.16	-0.32	-175.43	
10,289.0	0.50	9.10	10,176.9	-243.8	796.8	832.7	0.95	0.11	-183.16	
10,384.0	0.30	330.80	10,271.9	-243.2	796.8	832.5	0.34	-0.21	-40.32	
10,477.0	0.30	233.80	10,364.9	-243.1	796.4	832.2	0.48	0.00	-104.30	
10,571.0	0.70	180.30	10,458.9	-243.8	796.2	832.2	0.61	0.43	-56.91	
10,666.0	0.60	235.90	10,553.9	-244.7	795.8	832.0	0.64	-0.11	58.53	
10,761.0	1.00	212.30	10,648.9	-245.7	795.0	831.4	0.54	0.42	-24.84	
10,855.0	1.20	204.90	10,742.9	-247.2	794.1	831.0	0.26	0.21	-7.87	
10,950.0	1.80	200.60	10,837.9	-249.5	793.2	830.7	0.64	0.63	-4.53	
11,041.0	1.50	198.60	10,928.8	-252.0	792.3	830.4	0.34	-0.33	-2.20	
11,136.0	1.10	170.80	11,023.8	-254.1	792.0	830.7	0.77	-0.42	-29.26	
11,230.0	0.20	6.90	11,117.8	-254.8	792.2	831.1	1.38	-0.96	-174.36	
11,323.0	0.40	301.70	11,210.8	-254.5	792.0	830.7	0.39	0.22	-70.11	
11,417.0	0.10	127.90	11,304.8	-254.4	791.7	830.5	0.53	-0.32	-184.89	
11,511.0	0.90	20.40	11,398.8	-253.7	792.1	830.6	0.99	0.85	-114.36	
11,656.0	1.40	10.70	11,543.7	-250.9	792.8	830.6	0.37	0.34	-6.69	
11,750.0	1.10	326.20	11,637.7	-249.0	792.5	829.9	1.05	-0.32	-47.34	
11,795.0	1.00	299.60	11,682.7	-248.5	791.9	829.2	1.10	-0.22	-59.11	
11,890.0	0.90	228.10	11,777.7	-248.6	790.6	828.0	1.17	-0.11	-75.26	
11,984.0	0.40	220.60	11,871.7	-249.3	789.9	827.4	0.54	-0.53	-7.98	
12,077.0	0.40	126.10	11,964.7	-249.8	789.9	827.6	0.63	0.00	-101.61	
12,172.0	0.70	209.10	12,059.7	-250.5	789.9	827.7	0.80	0.32	87.37	
12,267.0	1.70	218.40	12,154.7	-252.1	788.8	827.0	1.07	1.05	9.79	
12,362.0	1.80	212.00	12,249.6	-254.4	787.1	826.0	0.23	0.11	-6.74	
12,456.0	1.30	184.50	12,343.6	-256.7	786.2	825.8	0.94	-0.53	-29.26	
12,551.0	1.50	152.40	12,438.6	-258.9	786.7	826.8	0.84	0.21	-33.79	
12,645.0	1.50	149.30	12,532.5	-261.1	787.9	828.5	0.09	0.00	-3.30	
12,740.0	1.60	157.90	12,627.5	-263.4	789.0	830.2	0.27	0.11	9.05	
12,835.0	1.70	151.90	12,722.5	-265.8	790.2	832.0	0.21	0.11	-6.32	
12,930.0	1.80	161.40	12,817.4	-268.5	791.4	833.8	0.32	0.11	10.00	
13,025.0	1.60	170.60	12,912.4	-271.2	792.0	835.1	0.36	-0.21	9.68	
13,119.0	1.80	159.40	13,006.3	-273.9	792.8	836.5	0.41	0.21	-11.91	
13,215.0	2.10	170.60	13,102.3	-277.0	793.6	838.1	0.50	0.31	11.67	
13,310.0	2.50	174.40	13,197.2	-280.8	794.1	839.6	0.45	0.42	4.00	
13,403.0	3.10	177.20	13,290.1	-285.4	794.4	841.0	0.66	0.65	3.01	
TD DIXON B-8										

Survey Report

Company:	ANTERO RESOURCES	Local Co-ordinate Reference:	Well DIXON B-8 (111017) - Slot B-8
Project:	DIXON PROJECT (B Wells)	TVD Reference:	RKB @ 5536.0ft (RKB)
Site:	BRONCO 4	MD Reference:	RKB @ 5536.0ft (RKB)
Well:	DIXON B-8 (111017)	North Reference:	Grid
Wellbore:	ANTERO DIXON B-8	Survey Calculation Method:	Minimum Curvature
Design:	ANTERO DIXON B-8	Database:	EDMDB

Survey									
Measured Depth (ft)	Inclination (°)	Azimuth (°)	Vertical Depth (ft)	+N/-S (ft)	+E/-W (ft)	Vertical Section (ft)	Dogleg Rate (°/100ft)	Build Rate (°/100ft)	Turn Rate (°/100ft)
13,452.0	3.10	177.20	13,339.0	-288.0	794.5	841.8	0.00	0.00	0.00
PROJECTION TO BIT @ 13452' MD (13339' TVD)									

Design Targets									
Target Name	Dip Angle (°)	Dip Dir. (°)	TVD (ft)	+N/-S (ft)	+E/-W (ft)	Northing (ft)	Easting (ft)	Latitude	Longitude
TOP GAS DIXON B-8		0.00	5,354.0	-245.8	794.2	14,364,271.75	891,212.20	39° 31' 24.460 N	107° 39' 24.062 W
- survey misses by 28.5ft at 5466.5ft MD (5355.1 TVD, -260.7 N, 818.4 E)									
- Circle (radius 50.0)									
TD DIXON B-8		0.00	360.00	13,300.0	-245.8	794.2	14,364,271.75	39° 31' 24.460 N	107° 39' 24.062 W
- survey misses by 40.8ft at 13403.0ft MD (13290.1 TVD, -285.4 N, 794.4 E)									
- Circle (radius 25.0)									

Survey Annotations					
Measured Depth (ft)	Vertical Depth (ft)	Local Coordinates			
		+N/-S (ft)	+E/-W (ft)	Comment	
13,452.0	13,339.0	-288.0	794.5	PROJECTION TO BIT @ 13452' MD (13339' TVD)	