

Jason S. Allee—On behalf of Lat40, Inc.
Colorado Licensed Professional Land Surveyor No. 38479 DATE: 7/1/2015
PROJECT#: 2015062

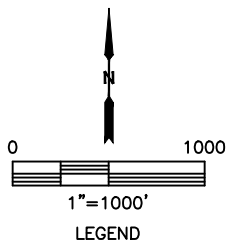
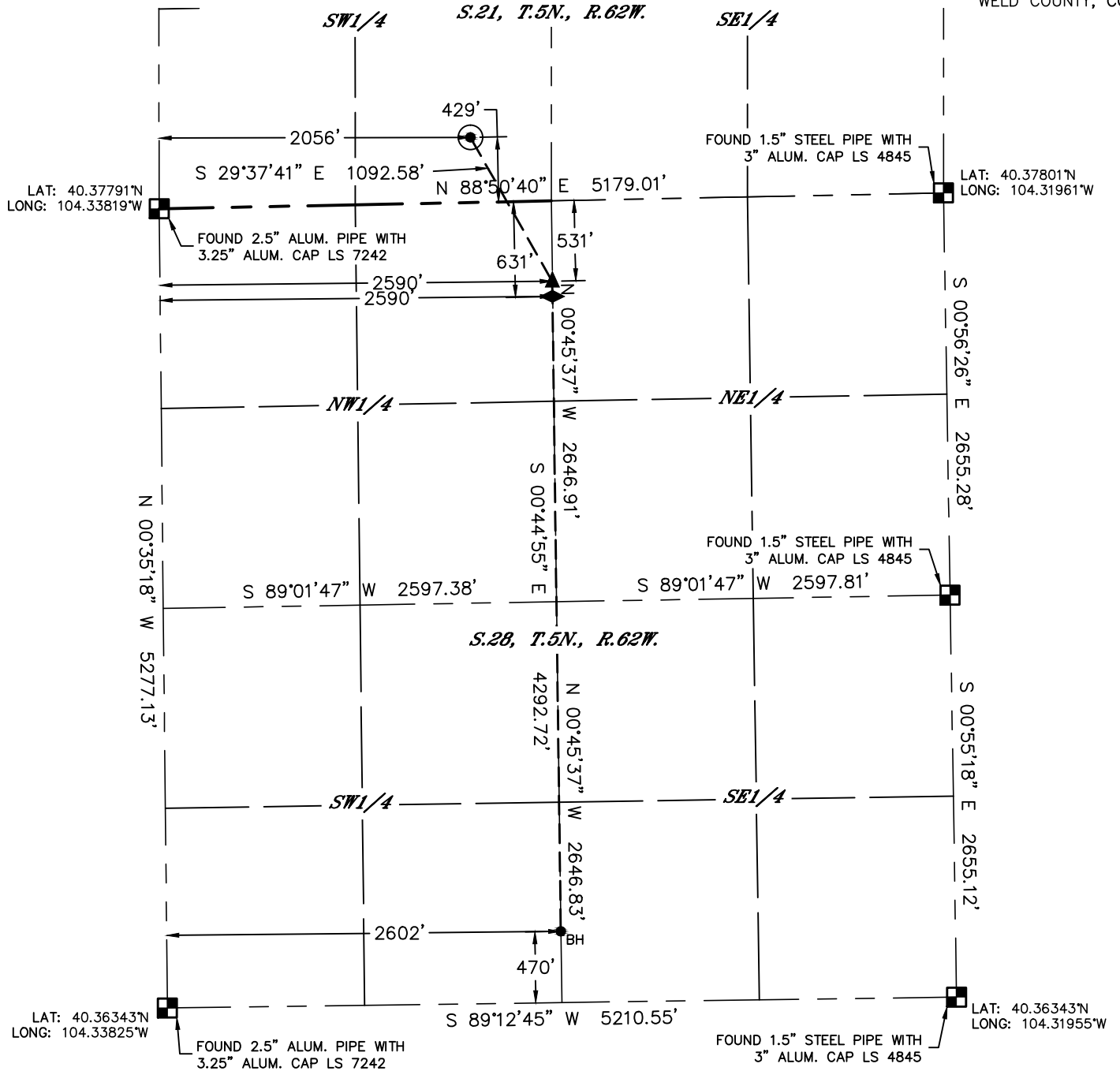


Lat40°, Inc. 6250 W. 10th Street, Unit 2, Greeley, CO 970-515-5294

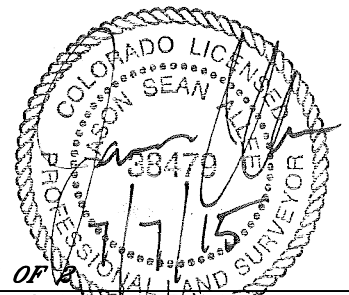
WELL LOCATION CERTIFICATE

STATE ANTELOPE K-O-28HNB

SECTION: 21
TOWNSHIP: 5N
RANGE: 62W
6TH. P.M.
WELD COUNTY, CO



- LEGEND
- = ALIQUOT MONUMENT AS DESCRIBED
 - = CALCULATED POSITION
 - = SURFACE HOLE LOCATION (SHL)
 - ▲ = ENTRY POINT LOCATION (EP)
 - ◆ = TOP OF PRODUCTION ZONE (TPZ)
 - = BOTTOM HOLE LOCATION (BHL)

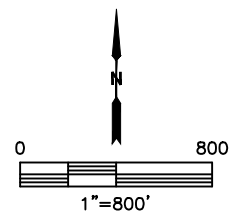
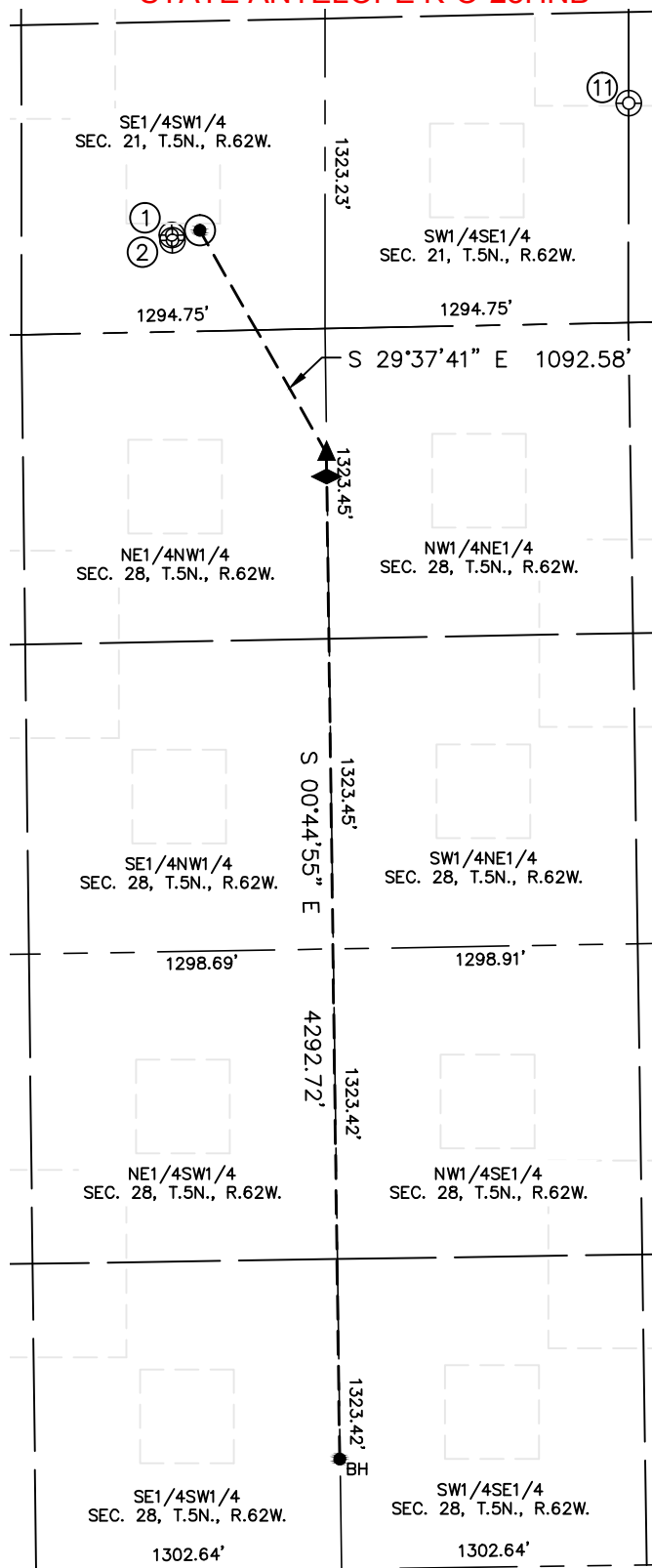


SHEET 2 OF 2

Jason S. Allee—On behalf of Lat40°, Inc.
Colorado Licensed Professional Land Surveyor No. 38479
DATE: 7/1/2015
PROJECT#: 2015062

SITE SKETCH

STATE ANTELOPE K-O-28HNB



WELL NO.	WELL NAME	SHL FOOTAGE				SHL LAT°	SHL LONG°	PDOP	ELEV (FT.)	1/4/1/4
1	ANTELOPE O-K-21HZ	390	FSL	1938	FWL	40.37902	-104.33122	2.2	4634	SESW
2	STATE ANTELOPE J-21-16XRL	412	FSL	1936	FWL	40.37908	-104.33123	3.5	4634	SESW
11	ANTELOPE 44-41-21HNB	935	FSL	1295	FEL	40.38055	-104.32421	N/A	4668	SESE

NOTE: THE DATA SHOWN IN RED ABOVE WAS OBTAINED FROM THE COGCC SCOUT CARDS OF NON-PRODUCING WELLS. DATE: 7/1/2015
PROJECT#: 2015062