

US ROCKIES WATTENBERG PLANNING

WELD-NAD83-UTMFT13N

2N-65W-16 Cook #1 Pad

COOK 28N-16HZ

Plan A

Plan: Permit Rev-1

Sperry Drilling Services Proposal Report

19 March, 2015

Well Coordinates: 14,575,319.31 N, 1,733,613.79 E (40° 07' 58.60" N, 104° 39' 59.64" W)

Ground Level: 4,884.00 usft

Local Coordinate Origin:

Centered on Well COOK 28N-16HZ

Viewing Datum:

RKB = 17' @ 4901.00usft (D Rig)

TVDs to System:

N

North Reference:

True

Unit System:

Dec-Deg - API - US Survey Feet - Custom

Version: 5000.1 Build: 70

HALLIBURTON

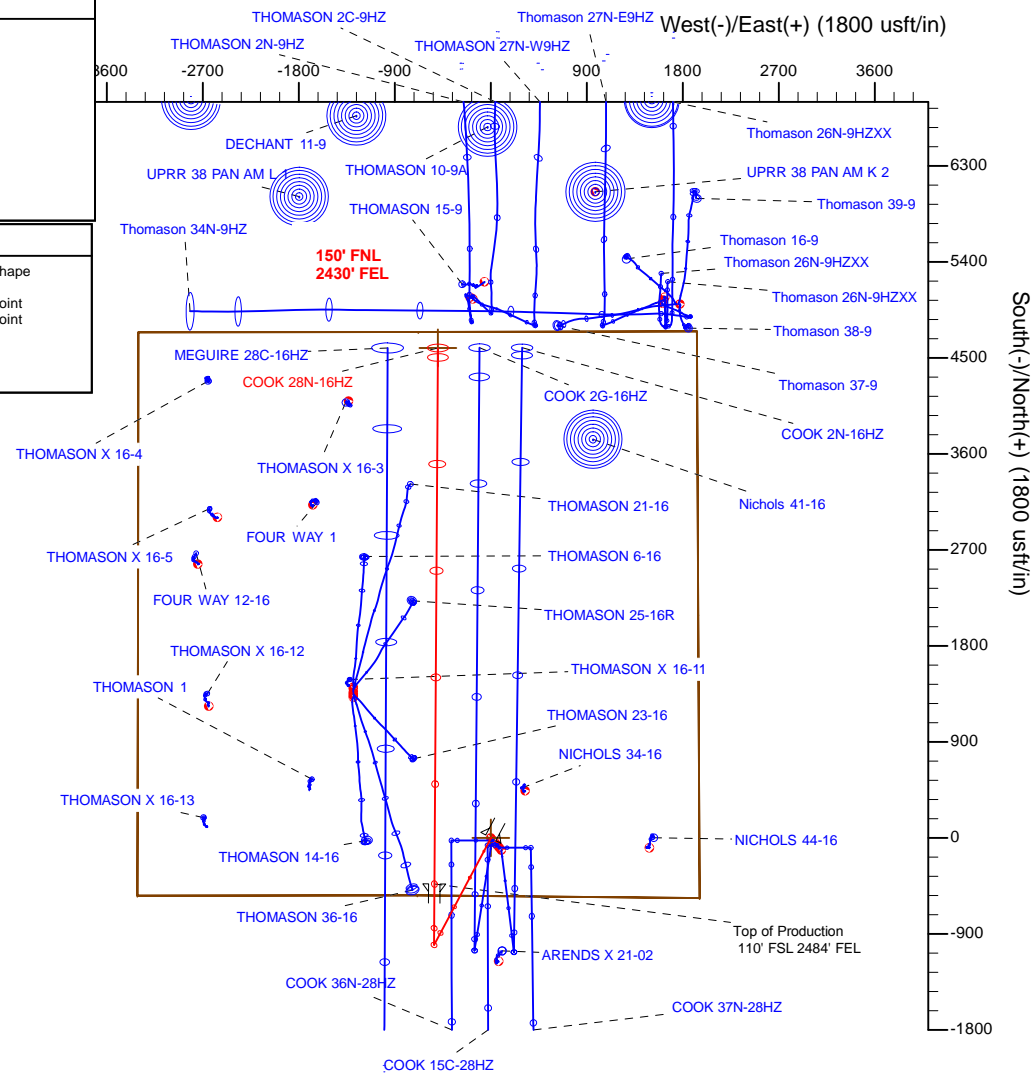
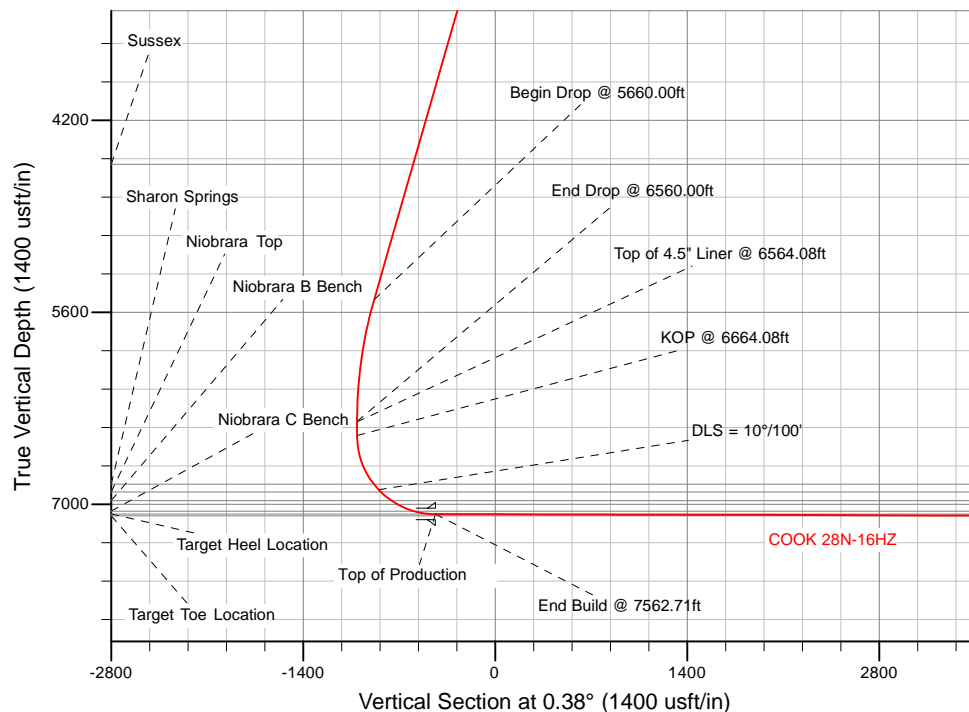
Design: Permit Rev-1

US ROCKIES WATTENBERG PLANNING

Sperry Drilling

Sec	MD	Inc	Azi	TVD	+N/-S	+E/-W	Dleg	TFace	VSec	Target
1	0.00	0.00	0.00	0.00	0.00	0.00	0.00	0.00	0.00	
2	1990.00	0.00	0.00	1990.00	0.00	0.00	0.00	0.00	0.00	
3	2890.00	18.00	208.00	2875.27	-123.80	-65.83	2.00	208.00	-124.23	
4	5660.00	18.00	208.00	5509.70	-879.58	-467.68	0.00	0.00	-882.67	
5	6560.00	0.00	0.00	6394.96	-1003.38	-533.51	2.00	180.00	-1006.90	
6	666.00	0.00	0.00	6499.04	-1003.38	-533.51	0.00	0.00	-1006.90	
7	7562.71	89.86	0.38	7072.00	-431.81	-529.75	10.00	0.38	-435.31	
8	12588.99	89.86	0.38	7084.00	4594.35	-496.68	0.00	0.00	4590.95	COOK 28N-16HZ BHL

Name	TVD	+N/-S	+E/-W	Latitude	Longitude	Shape
COOK 28N-16HZ_SHL	0.00	0.00	0.00	40.132945	-104.666566	Point
COOK 28N-16HZ_BHL	7084.00	4594.35	-496.68	40.145561	-104.668344	Point



WELL DETAILS: COOK 28N-16HZ	
Ground Level:	4884.00
RKB = 17' @ 4901.00usft (D Rig)	
Plan: Permit Rev-1 (COOK 28N-16HZ/Plan A)	
Created By: Clint Eshelman	Date: 3/6/2015
Reviewed: _____	Date: _____

Plan Report for COOK 28N-16HZ - Permit Rev-1

Measured Depth (usft)	Inclination (°)	Azimuth (°)	Vertical Depth (usft)	+N/-S (usft)	+E/-W (usft)	Vertical Section (usft)	Dogleg Rate (°/100usft)	Build Rate (°/100usft)	Turn Rate (°/100usft)	Toolface Azimuth (°)
0.00	0.00	0.00	0.00	0.00	0.00	0.00	0.00	0.00	0.00	0.00
COOK 28N-16HZ_SHL - 2N-R65W-Sec. 16_Section Lines										
100.00	0.00	0.00	100.00	0.00	0.00	0.00	0.00	0.00	0.00	0.00
200.00	0.00	0.00	200.00	0.00	0.00	0.00	0.00	0.00	0.00	0.00
300.00	0.00	0.00	300.00	0.00	0.00	0.00	0.00	0.00	0.00	0.00
400.00	0.00	0.00	400.00	0.00	0.00	0.00	0.00	0.00	0.00	0.00
500.00	0.00	0.00	500.00	0.00	0.00	0.00	0.00	0.00	0.00	0.00
600.00	0.00	0.00	600.00	0.00	0.00	0.00	0.00	0.00	0.00	0.00
700.00	0.00	0.00	700.00	0.00	0.00	0.00	0.00	0.00	0.00	0.00
800.00	0.00	0.00	800.00	0.00	0.00	0.00	0.00	0.00	0.00	0.00
900.00	0.00	0.00	900.00	0.00	0.00	0.00	0.00	0.00	0.00	0.00
1,000.00	0.00	0.00	1,000.00	0.00	0.00	0.00	0.00	0.00	0.00	0.00
1,100.00	0.00	0.00	1,100.00	0.00	0.00	0.00	0.00	0.00	0.00	0.00
1,200.00	0.00	0.00	1,200.00	0.00	0.00	0.00	0.00	0.00	0.00	0.00
1,300.00	0.00	0.00	1,300.00	0.00	0.00	0.00	0.00	0.00	0.00	0.00
1,350.00	0.00	0.00	1,350.00	0.00	0.00	0.00	0.00	0.00	0.00	0.00
9 5/8"										
1,400.00	0.00	0.00	1,400.00	0.00	0.00	0.00	0.00	0.00	0.00	0.00
1,500.00	0.00	0.00	1,500.00	0.00	0.00	0.00	0.00	0.00	0.00	0.00
1,600.00	0.00	0.00	1,600.00	0.00	0.00	0.00	0.00	0.00	0.00	0.00
1,700.00	0.00	0.00	1,700.00	0.00	0.00	0.00	0.00	0.00	0.00	0.00
1,800.00	0.00	0.00	1,800.00	0.00	0.00	0.00	0.00	0.00	0.00	0.00
1,900.00	0.00	0.00	1,900.00	0.00	0.00	0.00	0.00	0.00	0.00	0.00
1,990.00	0.00	0.00	1,990.00	0.00	0.00	0.00	0.00	0.00	0.00	0.00
Begin Nudge @ 1990.00ft										
2,000.00	0.20	208.00	2,000.00	-0.02	-0.01	-0.02	2.00	2.00	0.00	208.00
2,100.00	2.20	208.00	2,099.97	-1.86	-0.99	-1.87	2.00	2.00	0.00	0.00
2,200.00	4.20	208.00	2,199.81	-6.79	-3.61	-6.82	2.00	2.00	0.00	0.00
2,300.00	6.20	208.00	2,299.40	-14.79	-7.87	-14.85	2.00	2.00	0.00	0.00
2,400.00	8.20	208.00	2,398.60	-25.86	-13.75	-25.95	2.00	2.00	0.00	0.00
2,500.00	10.20	208.00	2,497.31	-39.98	-21.26	-40.12	2.00	2.00	0.00	0.00
2,600.00	12.20	208.00	2,595.40	-57.13	-30.37	-57.33	2.00	2.00	0.00	0.00
2,700.00	14.20	208.00	2,692.75	-77.29	-41.09	-77.56	2.00	2.00	0.00	0.00
2,800.00	16.20	208.00	2,789.25	-100.44	-53.40	-100.79	2.00	2.00	0.00	0.00
2,890.00	18.00	208.00	2,875.27	-123.80	-65.83	-124.23	2.00	2.00	0.00	0.00
End Nudge @ 2890.00ft										
2,900.00	18.00	208.00	2,884.78	-126.53	-67.28	-126.97	0.00	0.00	0.00	0.00
3,000.00	18.00	208.00	2,979.88	-153.81	-81.78	-154.35	0.00	0.00	0.00	0.00
3,100.00	18.00	208.00	3,074.99	-181.10	-96.29	-181.73	0.00	0.00	0.00	0.00
3,200.00	18.00	208.00	3,170.10	-208.38	-110.80	-209.11	0.00	0.00	0.00	0.00
3,300.00	18.00	208.00	3,265.20	-235.67	-125.31	-236.49	0.00	0.00	0.00	0.00
3,400.00	18.00	208.00	3,360.31	-262.95	-139.81	-263.87	0.00	0.00	0.00	0.00
3,500.00	18.00	208.00	3,455.41	-290.24	-154.32	-291.25	0.00	0.00	0.00	0.00
3,600.00	18.00	208.00	3,550.52	-317.52	-168.83	-318.63	0.00	0.00	0.00	0.00
3,700.00	18.00	208.00	3,645.62	-344.81	-183.34	-346.01	0.00	0.00	0.00	0.00
3,800.00	18.00	208.00	3,740.73	-372.09	-197.84	-373.39	0.00	0.00	0.00	0.00
3,900.00	18.00	208.00	3,835.84	-399.37	-212.35	-400.77	0.00	0.00	0.00	0.00
4,000.00	18.00	208.00	3,930.94	-426.66	-226.86	-428.15	0.00	0.00	0.00	0.00
4,100.00	18.00	208.00	4,026.05	-453.94	-241.37	-455.53	0.00	0.00	0.00	0.00
4,200.00	18.00	208.00	4,121.15	-481.23	-255.87	-482.91	0.00	0.00	0.00	0.00
4,300.00	18.00	208.00	4,216.26	-508.51	-270.38	-510.30	0.00	0.00	0.00	0.00
4,400.00	18.00	208.00	4,311.36	-535.80	-284.89	-537.68	0.00	0.00	0.00	0.00
4,500.00	18.00	208.00	4,406.47	-563.08	-299.40	-565.06	0.00	0.00	0.00	0.00
4,600.00	18.00	208.00	4,501.58	-590.37	-313.90	-592.44	0.00	0.00	0.00	0.00
4,620.42	18.00	208.00	4,521.00	-595.94	-316.87	-598.03	0.00	0.00	0.00	0.00
Sussex										
4,700.00	18.00	208.00	4,596.68	-617.65	-328.41	-619.82	0.00	0.00	0.00	0.00
4,800.00	18.00	208.00	4,691.79	-644.94	-342.92	-647.20	0.00	0.00	0.00	0.00

Plan Report for COOK 28N-16HZ - Permit Rev-1

Measured Depth (usft)	Inclination (°)	Azimuth (°)	Vertical Depth (usft)	+N/-S (usft)	+E/-W (usft)	Vertical Section (usft)	Dogleg Rate (°/100usft)	Build Rate (°/100usft)	Turn Rate (°/100usft)	Toolface Azimuth (°)
4,900.00	18.00	208.00	4,786.89	-672.22	-357.43	-674.58	0.00	0.00	0.00	0.00
5,000.00	18.00	208.00	4,882.00	-699.51	-371.93	-701.96	0.00	0.00	0.00	0.00
5,100.00	18.00	208.00	4,977.10	-726.79	-386.44	-729.34	0.00	0.00	0.00	0.00
5,200.00	18.00	208.00	5,072.21	-754.07	-400.95	-756.72	0.00	0.00	0.00	0.00
5,300.00	18.00	208.00	5,167.31	-781.36	-415.46	-784.10	0.00	0.00	0.00	0.00
5,400.00	18.00	208.00	5,262.42	-808.64	-429.96	-811.48	0.00	0.00	0.00	0.00
5,500.00	18.00	208.00	5,357.53	-835.93	-444.47	-838.86	0.00	0.00	0.00	0.00
5,600.00	18.00	208.00	5,452.63	-863.21	-458.98	-866.24	0.00	0.00	0.00	0.00
5,660.00	18.00	208.00	5,509.70	-879.58	-467.68	-882.67	0.00	0.00	0.00	0.00
Begin Drop @ 5660.00ft										
5,700.00	17.20	208.00	5,547.82	-890.26	-473.36	-893.38	2.00	-2.00	0.00	180.00
5,800.00	15.20	208.00	5,643.85	-914.89	-486.46	-918.10	2.00	-2.00	0.00	180.00
5,900.00	13.20	208.00	5,740.79	-936.55	-497.97	-939.83	2.00	-2.00	0.00	-180.00
6,000.00	11.20	208.00	5,838.52	-955.21	-507.89	-958.56	2.00	-2.00	0.00	180.00
6,100.00	9.20	208.00	5,936.94	-970.85	-516.21	-974.25	2.00	-2.00	0.00	180.00
6,200.00	7.20	208.00	6,035.91	-983.44	-522.90	-986.88	2.00	-2.00	0.00	180.00
6,300.00	5.20	208.00	6,135.32	-992.97	-527.97	-996.45	2.00	-2.00	0.00	180.00
6,400.00	3.20	208.00	6,235.05	-999.44	-531.41	-1,002.94	2.00	-2.00	0.00	180.00
6,500.00	1.20	208.00	6,334.97	-1,002.83	-533.21	-1,006.34	2.00	-2.00	0.00	180.00
6,560.00	0.00	0.00	6,394.96	-1,003.38	-533.51	-1,006.90	2.00	-2.00	253.33	180.00
End Drop @ 6560.00ft										
6,564.08	0.00	0.00	6,399.04	-1,003.38	-533.51	-1,006.90	0.00	0.00	0.00	180.00
Top of 4.5" Liner @ 6564.08ft										
6,600.00	0.00	0.00	6,434.96	-1,003.38	-533.51	-1,006.90	0.00	0.00	0.00	0.00
6,664.08	0.00	0.00	6,499.04	-1,003.38	-533.51	-1,006.90	0.00	0.00	0.00	0.00
KOP @ 6664.08ft										
6,700.00	3.59	0.38	6,534.94	-1,002.26	-533.50	-1,005.77	10.00	10.00	0.00	0.38
6,800.00	13.59	0.38	6,633.69	-987.34	-533.40	-990.85	10.00	10.00	0.00	0.00
6,900.00	23.59	0.38	6,728.35	-955.50	-533.19	-959.01	10.00	10.00	0.00	0.00
7,000.00	33.59	0.38	6,816.05	-907.70	-532.88	-911.22	10.00	10.00	0.00	0.00
7,045.31	38.12	0.38	6,852.76	-881.17	-532.70	-884.68	10.00	10.00	0.00	0.00
Sharon Springs										
7,100.00	43.59	0.38	6,894.11	-845.40	-532.47	-848.92	10.00	10.00	0.00	0.00
DLS = 10°/100'										
7,123.45	45.94	0.38	6,910.76	-828.89	-532.36	-832.40	10.00	10.00	0.00	0.00
Niobrara Top										
7,200.00	53.59	0.38	6,960.17	-770.50	-531.98	-774.01	10.00	10.00	0.00	0.00
7,221.99	55.79	0.38	6,972.87	-752.56	-531.86	-756.07	10.00	10.00	0.00	0.00
Niobrara B Bench										
7,300.00	63.59	0.38	7,012.21	-685.26	-531.42	-688.77	10.00	10.00	0.00	0.00
7,400.00	73.59	0.38	7,048.67	-592.28	-530.80	-595.79	10.00	10.00	0.00	0.00
7,406.77	74.27	0.38	7,050.54	-585.78	-530.76	-589.28	10.00	10.00	0.00	0.00
Niobrara C Bench										
7,500.00	83.59	0.38	7,068.42	-494.38	-530.16	-497.89	10.00	10.00	0.00	0.00
7,562.71	89.86	0.38	7,072.00	-431.81	-529.75	-435.31	10.00	10.00	0.00	0.00
End Build @ 7562.71ft - Target Heel Location - Top of Production										
7,600.00	89.86	0.38	7,072.09	-394.52	-529.50	-398.02	0.00	0.00	0.00	0.00
7,700.00	89.86	0.38	7,072.33	-294.52	-528.84	-298.02	0.00	0.00	0.00	0.00
7,800.00	89.86	0.38	7,072.57	-194.52	-528.19	-198.02	0.00	0.00	0.00	0.00
7,900.00	89.86	0.38	7,072.80	-94.53	-527.53	-98.02	0.00	0.00	0.00	0.00
8,000.00	89.86	0.38	7,073.04	5.47	-526.87	1.98	0.00	0.00	0.00	0.00
8,100.00	89.86	0.38	7,073.28	105.47	-526.21	101.98	0.00	0.00	0.00	0.00
8,200.00	89.86	0.38	7,073.52	205.47	-525.55	201.98	0.00	0.00	0.00	0.00
8,300.00	89.86	0.38	7,073.76	305.46	-524.90	301.98	0.00	0.00	0.00	0.00
8,400.00	89.86	0.38	7,074.00	405.46	-524.24	401.98	0.00	0.00	0.00	0.00
8,500.00	89.86	0.38	7,074.24	505.46	-523.58	501.97	0.00	0.00	0.00	0.00
8,600.00	89.86	0.38	7,074.48	605.46	-522.92	601.97	0.00	0.00	0.00	0.00
8,700.00	89.86	0.38	7,074.72	705.45	-522.27	701.97	0.00	0.00	0.00	0.00

Plan Report for COOK 28N-16HZ - Permit Rev-1

Measured Depth (usft)	Inclination (°)	Azimuth (°)	Vertical Depth (usft)	+N/-S (usft)	+E/-W (usft)	Vertical Section (usft)	Dogleg Rate (°/100usft)	Build Rate (°/100usft)	Turn Rate (°/100usft)	Toolface Azimuth (°)
8,800.00	89.86	0.38	7,074.95	805.45	-521.61	801.97	0.00	0.00	0.00	0.00
8,900.00	89.86	0.38	7,075.19	905.45	-520.95	901.97	0.00	0.00	0.00	0.00
9,000.00	89.86	0.38	7,075.43	1,005.45	-520.29	1,001.97	0.00	0.00	0.00	0.00
9,100.00	89.86	0.38	7,075.67	1,105.44	-519.63	1,101.97	0.00	0.00	0.00	0.00
9,200.00	89.86	0.38	7,075.91	1,205.44	-518.98	1,201.97	0.00	0.00	0.00	0.00
9,300.00	89.86	0.38	7,076.15	1,305.44	-518.32	1,301.97	0.00	0.00	0.00	0.00
9,400.00	89.86	0.38	7,076.39	1,405.44	-517.66	1,401.97	0.00	0.00	0.00	0.00
9,500.00	89.86	0.38	7,076.63	1,505.43	-517.00	1,501.97	0.00	0.00	0.00	0.00
9,600.00	89.86	0.38	7,076.86	1,605.43	-516.34	1,601.97	0.00	0.00	0.00	0.00
9,700.00	89.86	0.38	7,077.10	1,705.43	-515.69	1,701.97	0.00	0.00	0.00	0.00
9,800.00	89.86	0.38	7,077.34	1,805.43	-515.03	1,801.97	0.00	0.00	0.00	0.00
9,900.00	89.86	0.38	7,077.58	1,905.42	-514.37	1,901.97	0.00	0.00	0.00	0.00
10,000.00	89.86	0.38	7,077.82	2,005.42	-513.71	2,001.97	0.00	0.00	0.00	0.00
10,100.00	89.86	0.38	7,078.06	2,105.42	-513.05	2,101.97	0.00	0.00	0.00	0.00
10,200.00	89.86	0.38	7,078.30	2,205.42	-512.40	2,201.97	0.00	0.00	0.00	0.00
10,300.00	89.86	0.38	7,078.54	2,305.41	-511.74	2,301.97	0.00	0.00	0.00	0.00
10,400.00	89.86	0.38	7,078.77	2,405.41	-511.08	2,401.97	0.00	0.00	0.00	0.00
10,500.00	89.86	0.38	7,079.01	2,505.41	-510.42	2,501.97	0.00	0.00	0.00	0.00
10,600.00	89.86	0.38	7,079.25	2,605.41	-509.76	2,601.97	0.00	0.00	0.00	0.00
10,700.00	89.86	0.38	7,079.49	2,705.40	-509.11	2,701.97	0.00	0.00	0.00	0.00
10,800.00	89.86	0.38	7,079.73	2,805.40	-508.45	2,801.97	0.00	0.00	0.00	0.00
10,900.00	89.86	0.38	7,079.97	2,905.40	-507.79	2,901.97	0.00	0.00	0.00	0.00
11,000.00	89.86	0.38	7,080.21	3,005.40	-507.13	3,001.97	0.00	0.00	0.00	0.00
11,100.00	89.86	0.38	7,080.45	3,105.39	-506.47	3,101.97	0.00	0.00	0.00	0.00
11,200.00	89.86	0.38	7,080.68	3,205.39	-505.82	3,201.97	0.00	0.00	0.00	0.00
11,300.00	89.86	0.38	7,080.92	3,305.39	-505.16	3,301.97	0.00	0.00	0.00	0.00
11,400.00	89.86	0.38	7,081.16	3,405.39	-504.50	3,401.97	0.00	0.00	0.00	0.00
11,500.00	89.86	0.38	7,081.40	3,505.39	-503.84	3,501.97	0.00	0.00	0.00	0.00
11,600.00	89.86	0.38	7,081.64	3,605.38	-503.18	3,601.97	0.00	0.00	0.00	0.00
11,700.00	89.86	0.38	7,081.88	3,705.38	-502.53	3,701.97	0.00	0.00	0.00	0.00
11,800.00	89.86	0.38	7,082.12	3,805.38	-501.87	3,801.97	0.00	0.00	0.00	0.00
11,900.00	89.86	0.38	7,082.36	3,905.38	-501.21	3,901.97	0.00	0.00	0.00	0.00
12,000.00	89.86	0.38	7,082.59	4,005.37	-500.55	4,001.96	0.00	0.00	0.00	0.00
12,100.00	89.86	0.38	7,082.83	4,105.37	-499.89	4,101.96	0.00	0.00	0.00	0.00
12,200.00	89.86	0.38	7,083.07	4,205.37	-499.24	4,201.96	0.00	0.00	0.00	0.00
12,300.00	89.86	0.38	7,083.31	4,305.37	-498.58	4,301.96	0.00	0.00	0.00	0.00
12,400.00	89.86	0.38	7,083.55	4,405.36	-497.92	4,401.96	0.00	0.00	0.00	0.00
12,500.00	89.86	0.38	7,083.79	4,505.36	-497.26	4,501.96	0.00	0.00	0.00	0.00
12,588.99	89.86	0.38	7,084.00	4,594.35	-496.68	4,590.95	0.00	0.00	0.00	0.00

TD Well @ 12588.99ft - Target Toe Location - COOK 28N-16HZ_BHL

Plan Annotations

Measured Depth (usft)	Vertical Depth (usft)	Local Coordinates		Comment
		+N/-S (usft)	+E/-W (usft)	
1,990.00	1,990.00	0.00	0.00	Begin Nudge @ 1990.00ft
2,890.00	2,875.27	-123.80	-65.83	End Nudge @ 2890.00ft
5,660.00	5,509.70	-879.58	-467.68	Begin Drop @ 5660.00ft
6,560.00	6,394.96	-1,003.38	-533.51	End Drop @ 6560.00ft
6,564.08	6,399.04	-1,003.38	-533.51	Top of 4.5" Liner @ 6564.08ft
6,664.08	6,499.04	-1,003.38	-533.51	KOP @ 6664.08ft
7,100.00	6,894.11	-845.40	-532.47	DLS = 10°/100'
7,562.71	7,072.00	-431.81	-529.75	End Build @ 7562.71ft
12,588.99	7,084.00	4,594.35	-496.68	TD Well @ 12588.99ft

Plan Report for COOK 28N-16HZ - Permit Rev-1

Vertical Section Information

Angle Type	Target	Azimuth (°)	Origin Type	Origin +N/_S (usft)	Origin +E/-W (usft)	Start TVD (usft)
User	No Target (Freehand)	0.38	Slot	0.00	0.00	0.00

Survey tool program

From (usft)	To (usft)	Survey/Plan	Survey Tool
0.00	7,562.71	Permit Rev-1	APC_ISCWSA REV 2 MWD+IFR1
7,562.71	12,588.99	Permit Rev-1	APC_ISCWSA REV 2 MWD+IFR1

Casing Details

Measured Depth (usft)	Vertical Depth (usft)	Name	Casing Diameter (")	Hole Diameter (")
1,350.00	1,350.00	9 5/8"	9-5/8	13-1/2
7,562.71	7,072.00	Top of Production	5-1/2	7-7/8

Formation Details

Measured Depth (usft)	Vertical Depth (usft)	Name	Lithology	Dip (°)	Dip Direction (°)
4,620.42	4,521.00	Sussex		0.00	
7,045.31	6,852.76	Sharon Springs		0.00	
7,123.45	6,910.76	Niobrara Top		0.00	
7,221.99	6,972.87	Niobrara B Bench		0.00	
7,406.77	7,050.54	Niobrara C Bench		0.00	
7,562.71	7,072.00	Target Heel Location		0.00	
12,588.99	7,084.00	Target Toe Location		0.00	

Targets associated with this wellbore

Target Name	TVD (usft)	+N/-S (usft)	+E/-W (usft)	Shape
COOK 28N-16HZ_SHL	0.00	0.00	0.00	Point
2N-R65W-Sec. 16_Section Lines	-12.00	-2,939.82	-2,979.79	Polygon
COOK 28N-16HZ_BHL	7,084.00	4,594.35	-496.68	Point

North Reference Sheet for 2N-65W-16 Cook #1 Pad - COOK 28N-16HZ - Plan A

All data is in US Feet unless otherwise stated. Directions and Coordinates are relative to True North Reference.

Vertical Depths are relative to RKB = 17' @ 4901.00usft (D Rig). Northing and Easting are relative to COOK 28N-16HZ

Coordinate System is Universal Transverse Mercator (US Survey Feet), Zone 13N (108 W to 102 W) using datum North American Datum 1983, ellipsoid

Projection method is Transverse Mercator (Gauss-Kruger)

Central Meridian is -105.00°, Longitude Origin:0.000000°, Latitude Origin:0.000000°

False Easting: 1,640,416.67usft, False Northing: 0.00usft, Scale Reduction: 0.99960993

Grid Coordinates of Well: 14,575,319.31 usft N, 1,733,613.79 usft E

Geographical Coordinates of Well: 40° 07' 58.60" N, 104° 39' 59.64" W

Grid Convergence at Surface is: 0.21°

Based upon Minimum Curvature type calculations, at a Measured Depth of 12,588.99usft
the Bottom Hole Displacement is 4,621.12usft in the Direction of 353.83° (True).

Magnetic Convergence at surface is: -8.08° (23 February 2015, , IGRF2010)

