



# Kerr-McGee Oil & Gas Onshore LP

A subsidiary of Anadarko Petroleum Corporation

1099 18<sup>th</sup> Street  
Denver, CO 80202  
720-929-6000

June 15, 2015

Matt Lepore  
Director, Colorado Oil and Gas Conservation Commission  
Department of Natural Resources  
The Chancery Building  
1120 Lincoln Street, Suite 801  
Denver, CO 80203

Re: **30 Day Certification Letter - 318A.e**  
COOK 15C-28HZ (Doc No. 400849750)  
Township 2 North, Range 65 West  
Section 16: SWSE  
Unit Acreage: 400 acres  
Unit Spacing: 02N-65W-Sec 16 SWSE  
02N-65W-Sec 21 W2E2  
02N-65W-Sec 28 W2E2  
02N-65W-Sec 33 NWNE  
Weld County, Colorado

Dear Director Lepore:

Kerr McGee Oil and Gas Onshore LP ("KMG") hereby certifies that KMG owns one hundred percent (100%) of the leasehold interest in the mineral rights in the proposed spacing unit. KMG hereby respectfully requests approval of this boundary well.

If you have any questions or issues regarding this permit, please contact our office.

Sincerely,

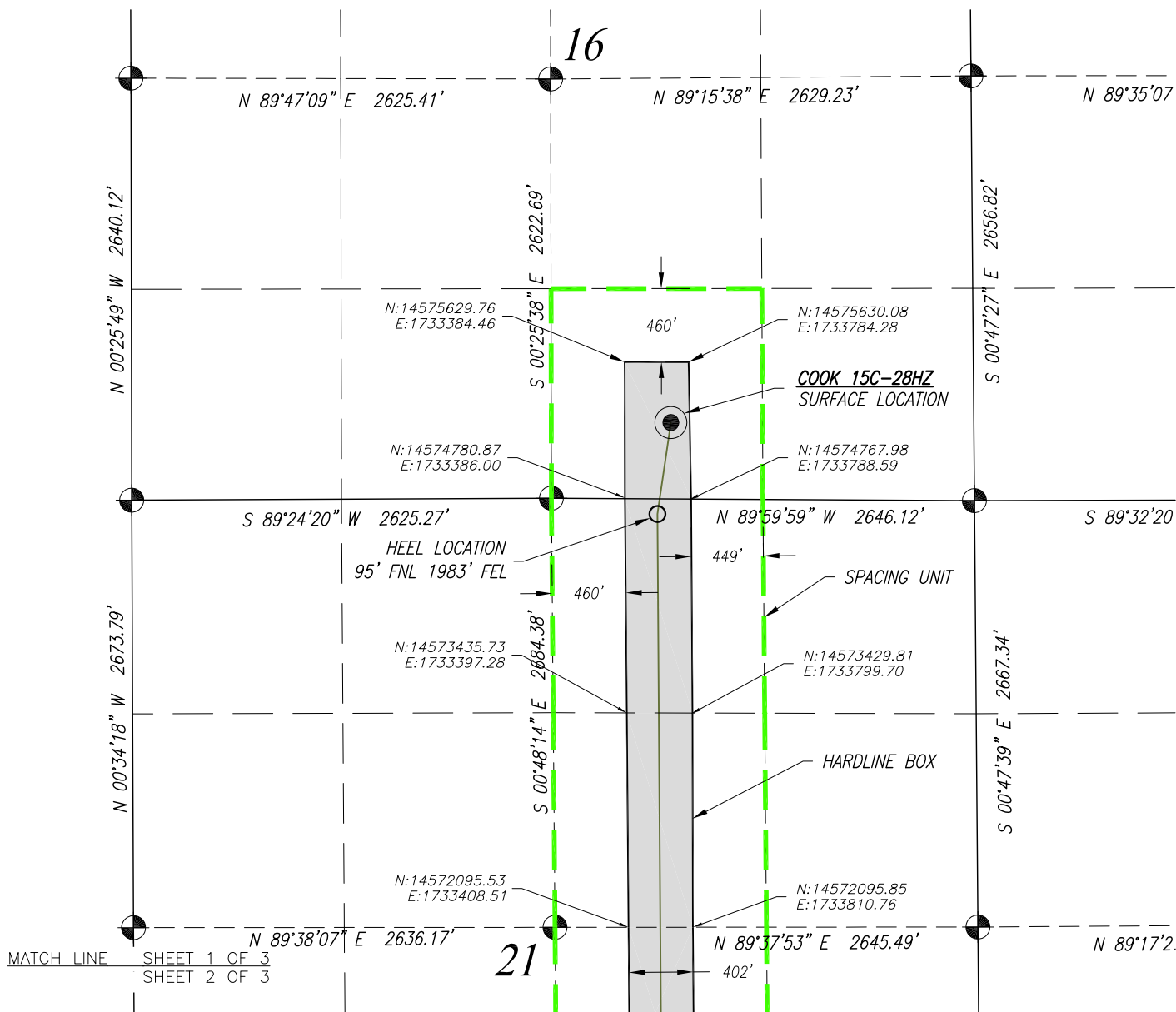
**Kerr-McGee Oil and Gas Onshore LP**

A handwritten signature in blue ink that reads "RPowers".

Ronett Powers  
Regulatory Analyst II

Enclosure

# TOWNSHIP 2 NORTH, RANGE 65 WEST, 6TH P.M.



## HEEL LOCATION

N: 14,574,679.93'  
E: 1,733,589.49'

LATITUDE= 40.131189°  
LONGITUDE= -104.666662°

LATITUDE= 40°07'52.279"  
LONGITUDE= -104°39'59.983"

## BOTTOM HOLE LOCATION

N: 14,564,203.47'  
E: 1,733,657.84'

LATITUDE= 40.102419°  
LONGITUDE= -104.666558°

LATITUDE= 40°06'08.708"  
LONGITUDE= -104°39'59.609"

## NOTES:

1. Found Section Corner
2. Calculated Section Corner
3. Basis of Bearings: Colorado coordinate system 1983 north zone ('GRID')
4. Basis of Distances: GRID; Combined Factor=0.999728637
5. Basis of coordinates: UTM ZONE 13 NAD 83

PREPARED FOR:

**KerrMcGee**  
Kerr-McGee Oil &  
Gas Onshore L.P.  
1099 18th Street  
Denver, Colorado 80202

**Acklam, Inc.**

DATE SURVEYED: 12/15/2014

DATE DRAFTED: 04/13/2015

DRAFTED BY: FWM CHK BY: MAH

JOB No. 14506

REVISED: 4/27/2015

## SPACING UNIT EXHIBIT

### COOK 15C-28HZ

SURFACE 477' FSL 1895' FEL SEC. 16  
GROUND ELEVATION=4884.7'

HEEL 95' FNL 1983' FEL SEC. 21  
BOTTOM 46' FSL 2043' FEL SEC. 28

SW1/4 SE1/4  
SECTION 16, T2N, R65W, 6TH PM  
WELD COUNTY, COLORADO

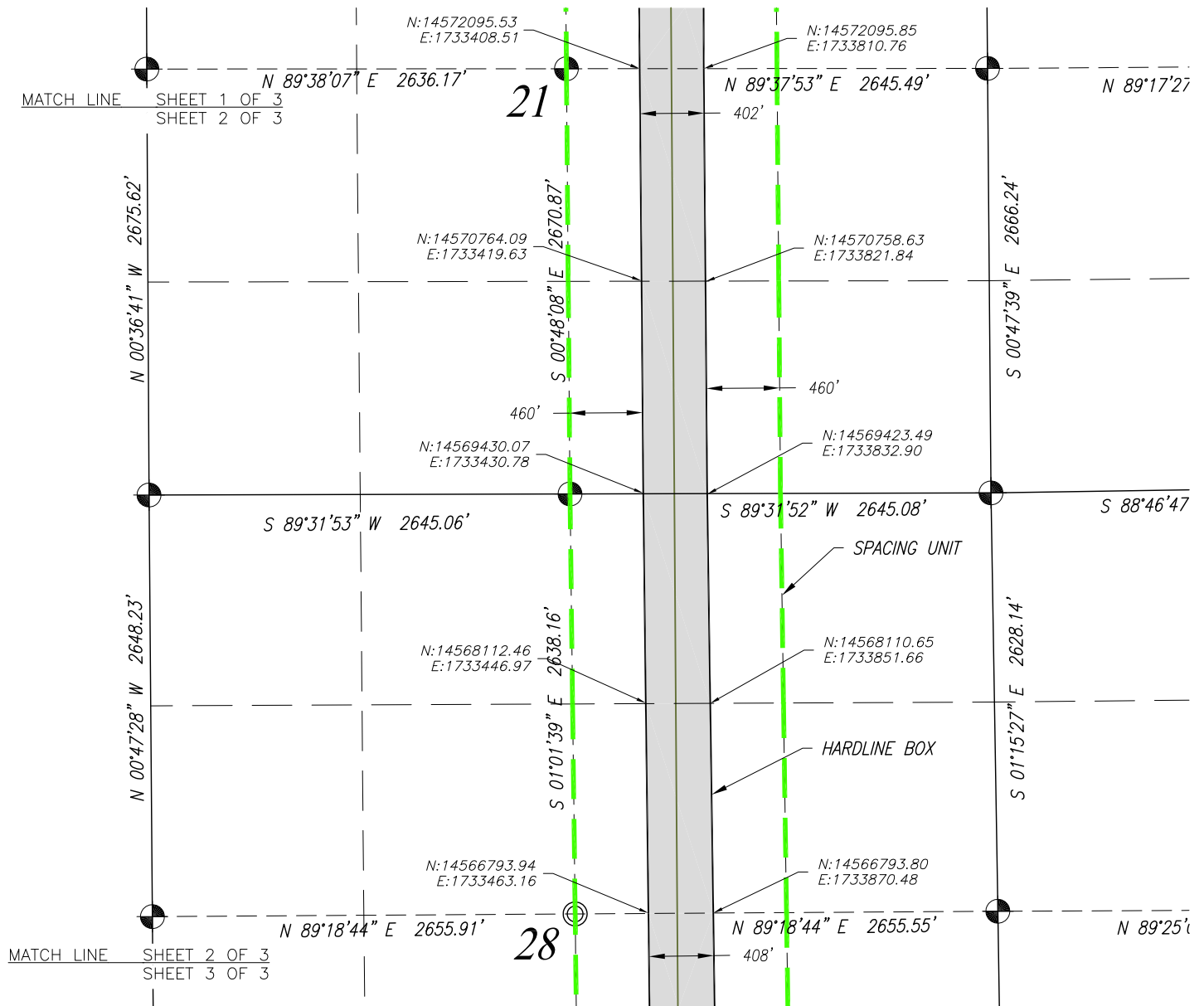
0' 1000'  
SCALE: 1"=1000'



NOTICE: According to Colorado law you must commence any legal action based upon any defect in this survey within three years after you first discover such defect. In no event may any action based upon any defect in this survey be commenced more than ten years from the date of the certification shown hereon.

SHEET 1 OF 3

# TOWNSHIP 2 NORTH, RANGE 65 WEST, 6TH P.M.



## HEEL LOCATION

N: 14,574,679.93'  
E: 1,733,589.49'

LATITUDE= 40.131189°  
LONGITUDE= -104.666662°

LATITUDE= 40°07'52.279"  
LONGITUDE= -104°39'59.983"

## BOTTOM HOLE LOCATION

N: 14,564,203.47'  
E: 1,733,657.84'

LATITUDE= 40.102419°  
LONGITUDE= -104.666558°

LATITUDE= 40°06'08.708"  
LONGITUDE= -104°39'59.609"

## NOTES:

1. Found Section Corner
2. Calculated Section Corner
3. Basis of Bearings: Colorado coordinate system 1983 north zone ('GRID')
4. Basis of Distances: GRID; Combined Factor=0.999728637
5. Basis of coordinates: UTM ZONE 13 NAD 83

PREPARED FOR:

**KerrMcGee**  
Kerr-McGee Oil &  
Gas Onshore L.P.  
1099 18th Street  
Denver, Colorado 80202

**Acklam, Inc.**

DATE SURVEYED: 12/15/2014

DATE DRAFTED: 04/13/2015

DRAFTED BY: FWM CHK BY: MAH

JOB No. 14506 REVISED: 4/27/2015

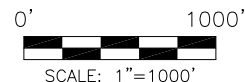
## SPACING UNIT EXHIBIT

### COOK 15C-28HZ

SURFACE 477' FSL 1895' FEL SEC. 16  
GROUND ELEVATION=4884.7'

HEEL 95' FNL 1983' FEL SEC. 21  
BOTTOM 46' FSL 2043' FEL SEC. 28

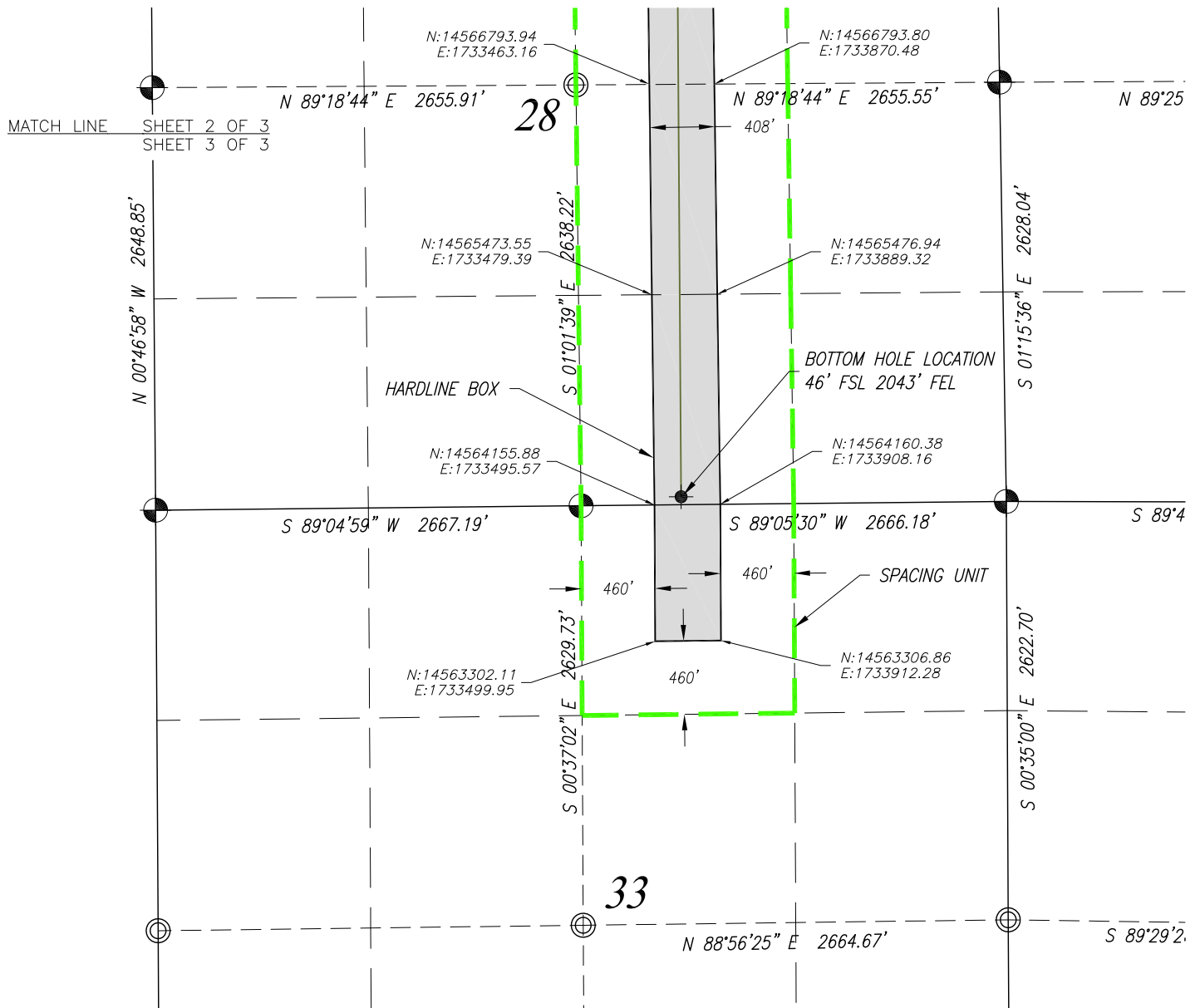
SW1/4 SE1/4  
SECTION 16, T2N, R65W, 6TH PM  
WELD COUNTY, COLORADO



NOTICE: According to Colorado law you must commence any legal action based upon any defect in this survey within three years after you first discover such defect. In no event may any action based upon any defect in this survey be commenced more than ten years from the date of the certification shown hereon.

SHEET 2 OF 3

# TOWNSHIP 2 NORTH, RANGE 65 WEST, 6TH P.M.



## HEEL LOCATION

N: 14,574,679.93'  
E: 1,733,589.49'

LATITUDE= 40.131189°  
LONGITUDE= -104.666662°

LATITUDE= 40°07'52.279"  
LONGITUDE= -104°39'59.983"

## BOTTOM HOLE LOCATION

N: 14,564,203.47'  
E: 1,733,657.84'

LATITUDE= 40.102419°  
LONGITUDE= -104.666558°

LATITUDE= 40°06'08.708"  
LONGITUDE= -104°39'59.609"

## NOTES:

1. Found Section Corner
2. Calculated Section Corner
3. Basis of Bearings: Colorado coordinate system 1983 north zone ('GRID')
4. Basis of Distances: GRID; Combined Factor=0.999728637
5. Basis of coordinates: UTM ZONE 13 NAD 83

PREPARED FOR:

**Kerr-McGee**  
Kerr-McGee Oil &  
Gas Onshore L.P.  
1099 18th Street  
Denver, Colorado 80202

**Acklam, Inc.**

DATE SURVEYED: 12/15/2014

DATE DRAFTED: 04/13/2015

DRAFTED BY: FWM CHK BY: MAH

JOB No. 14506

REVISED: 4/27/2015

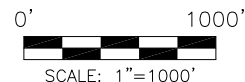
## SPACING UNIT EXHIBIT

### COOK 15C-28HZ

SURFACE 477' FSL 1895' FEL SEC. 16  
GROUND ELEVATION=4884.7'

HEEL 95' FNL 1983' FEL SEC. 21  
BOTTOM 46' FSL 2043' FEL SEC. 28

SW1/4 SE1/4  
SECTION 16, T2N, R65W, 6TH PM  
WELD COUNTY, COLORADO



NOTICE: According to Colorado law you must commence any legal action based upon any defect in this survey within three years after you first discover such defect. In no event may any action based upon any defect in this survey be commenced more than ten years from the date of the certification shown hereon.

SHEET 3 OF 3