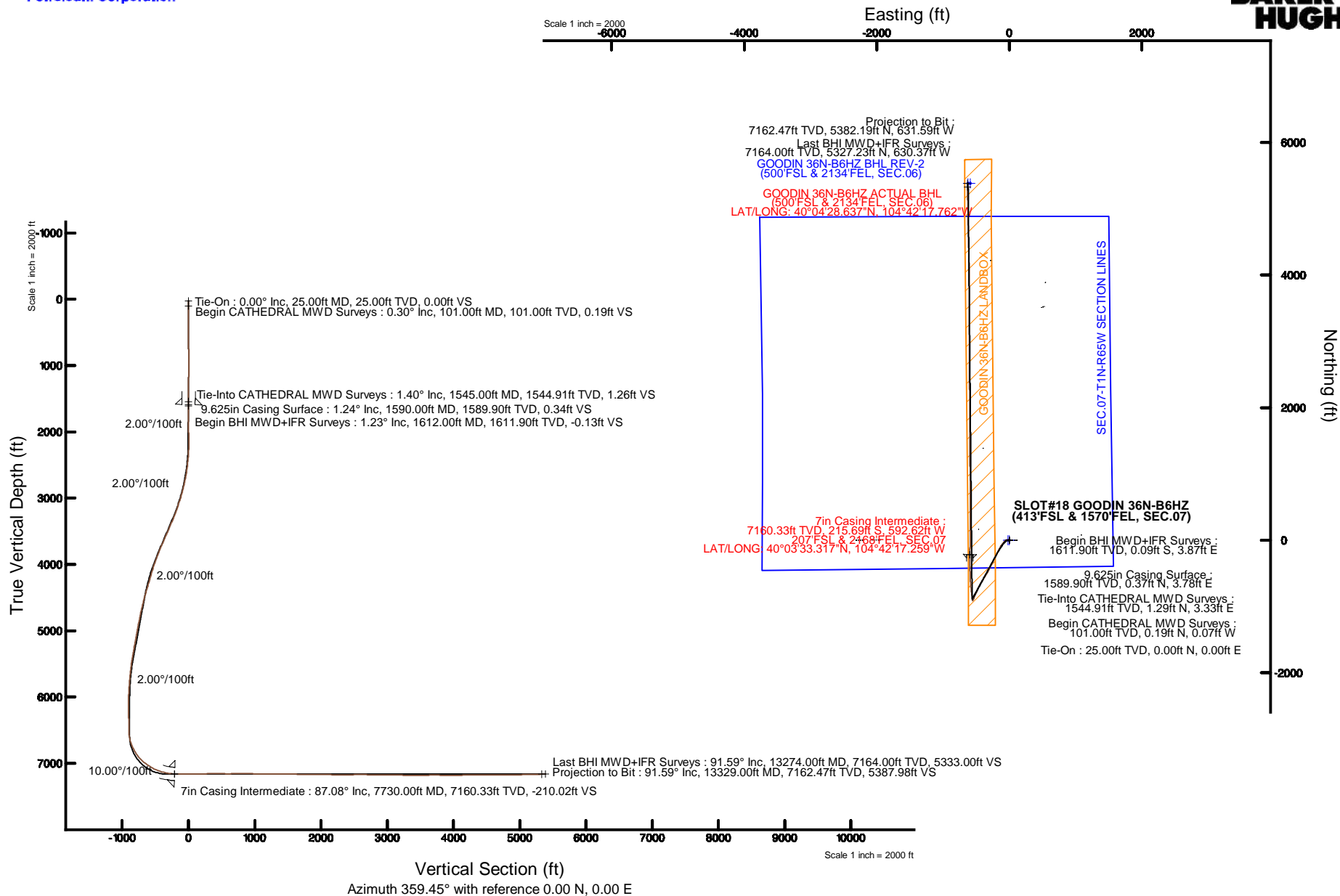


KERR-MCGEE OIL & GAS ONSHORE LP (LAMBERT STATE PLANE COORD)

Location: COLORADO Slot: SLOT#18 GOODIN 36N-B6HZ (413°FSL & 1570°FEL, SEC.07)
 Field: WELD COUNTY (KERR MCGEE) Well: GOODIN 36N-B6HZ
 Facility: SEC.07-T1N-R65W Wellbore: GOODIN 36N-B6HZ PWB

Plot reference wellpath is GOODIN 36N-B6HZ (REV-B.0) PWP

True vertical depths are referenced to H&P 307 (25KB) (RKB)	Grid System: NAD83 / Lambert Colorado SP, Northern Zone (501), US feet
Measured depths are referenced to H&P 307 (25KB) (RKB)	North Reference: True north
H&P 307 (25KB) (RKB) to Mean Sea Level: 5004 feet	Scale: True distance
Mean Sea Level to Mud line (At Slot: SLOT#18 GOODIN 36N-B6HZ (413°FSL & 1570°FEL, SEC.07)): 0 feet	Depths are in feet
Coordinates are in feet referenced to Slot	Created by: precain on 5/8/2015



REFERENCE WELLPATH IDENTIFICATION			
Operator	KERR-MCGEE OIL & GAS ONSHORE LP (LAMBERT STATE PLANE COORD)	Slot	SLOT#18 GOODIN 36N-B6HZ (413'FSL & 1570'FEL, SEC.07)
Area	COLORADO	Well	GOODIN 36N-B6HZ
Field	WELD COUNTY (KERR MCGEE)	Wellbore	GOODIN 36N-B6HZ AWB <13329>
Facility	SEC.07-T1N-R65W		

REPORT SETUP INFORMATION			
Projection System	NAD83 / Lambert Colorado SP, Northern Zone (501), US feet	Software System	WellArchitect® 4.1.1
North Reference	True	User	Precain
Scale	0.999962	Report Generated	5/8/2015 at 12:23:25 PM
Convergence at slot	0.52° East	Database/Source file	WellArchitectDC/GOODIN_36N-B6HZ_AWB_13329_.xml

WELLPATH LOCATION						
	Local coordinates		Grid coordinates		Geographic coordinates	
	North[ft]	East[ft]	Easting[US ft]	Northing[US ft]	Latitude	Longitude
Slot Location	-79.01	-1088.57	3223173.89	1265650.92	40°03'35.449"N	104°42'09.637"W
Facility Reference Pt			3224261.66	1265739.76	40°03'36.230"N	104°41'55.637"W
Field Reference Pt			3197771.84	1268891.29	40°04'09.600"N	104°47'36.000"W

WELLPATH DATUM			
Calculation method	Minimum curvature	H&P 307 (25'KB) (RKB) to Facility Vertical Datum	5004.00ft
Horizontal Reference Pt	Slot	H&P 307 (25'KB) (RKB) to Mean Sea Level	5004.00ft
Vertical Reference Pt	H&P 307 (25'KB) (RKB)	H&P 307 (25'KB) (RKB) to Mud Line at Slot (SLOT#18 GOODIN 36N-B6HZ (413'FSL & 1570'FEL, SEC.07))	5004.00ft
MD Reference Pt	H&P 307 (25'KB) (RKB)	Section Origin	N 0.00, E 0.00 ft
Field Vertical Reference	Mean Sea Level	Section Azimuth	359.45°

REFERENCE WELLPATH IDENTIFICATION			
Operator	KERR-MCGEE OIL & GAS ONSHORE LP (LAMBERT STATE PLANE COORD)	Slot	SLOT#18 GOODIN 36N-B6HZ (413'FSL & 1570'FEL, SEC.07)
Area	COLORADO	Well	GOODIN 36N-B6HZ
Field	WELD COUNTY (KERR MCGEE)	Wellbore	GOODIN 36N-B6HZ AWB <13329>
Facility	SEC.07-T1N-R65W		

WELLPATH DATA (146 stations) † = interpolated/extrapolated station										
MD [ft]	Inclination [°]	Azimuth [°]	TVD [ft]	Vert Sect [ft]	North [ft]	East [ft]	Latitude	Longitude	DLS [°/100ft]	Comments
0.00†	0.000	338.500	0.00	0.00	0.00	0.00	40°03'35.449°N	104°42'09.637°W	0.00	
25.00	0.000	338.500	25.00	0.00	0.00	0.00	40°03'35.449°N	104°42'09.637°W	0.00	Tie-On
101.00	0.300	338.500	101.00	0.19	0.19	-0.07	40°03'35.451°N	104°42'09.638°W	0.39	Begin CATHEDRAL MWD Surveys
179.00	0.400	302.200	179.00	0.52	0.52	-0.38	40°03'35.454°N	104°42'09.642°W	0.30	
257.00	0.100	278.300	257.00	0.68	0.68	-0.68	40°03'35.456°N	104°42'09.646°W	0.40	
338.00	0.200	353.200	338.00	0.83	0.83	-0.76	40°03'35.457°N	104°42'09.647°W	0.25	
418.00	0.200	9.400	418.00	1.11	1.10	-0.76	40°03'35.460°N	104°42'09.647°W	0.07	
498.00	0.300	346.500	498.00	1.45	1.44	-0.78	40°03'35.463°N	104°42'09.647°W	0.17	
578.00	0.400	329.900	577.99	1.90	1.89	-0.97	40°03'35.468°N	104°42'09.649°W	0.18	
658.00	0.500	340.600	657.99	2.47	2.46	-1.23	40°03'35.473°N	104°42'09.653°W	0.16	
738.00	0.700	351.600	737.99	3.29	3.27	-1.41	40°03'35.481°N	104°42'09.655°W	0.29	
818.00	0.400	262.300	817.99	3.73	3.72	-1.76	40°03'35.486°N	104°42'09.660°W	1.00	
898.00	0.200	262.300	897.98	3.68	3.66	-2.18	40°03'35.485°N	104°42'09.665°W	0.25	
978.00	0.400	272.400	977.98	3.68	3.66	-2.60	40°03'35.485°N	104°42'09.670°W	0.26	
1058.00	0.400	265.600	1057.98	3.68	3.65	-3.15	40°03'35.485°N	104°42'09.678°W	0.06	
1138.00	0.700	98.300	1137.98	3.58	3.55	-2.95	40°03'35.484°N	104°42'09.675°W	1.37	
1218.00	0.800	93.500	1217.97	3.47	3.45	-1.91	40°03'35.483°N	104°42'09.662°W	0.15	
1298.00	0.900	90.100	1297.96	3.42	3.41	-0.72	40°03'35.483°N	104°42'09.646°W	0.14	
1378.00	1.100	92.000	1377.95	3.38	3.39	0.67	40°03'35.482°N	104°42'09.628°W	0.25	
1458.00	1.200	133.600	1457.94	2.76	2.78	2.05	40°03'35.476°N	104°42'09.611°W	1.03	
1545.00	1.400	144.300	1544.91	1.26	1.29	3.33	40°03'35.462°N	104°42'09.594°W	0.36	Tie-Into CATHEDRAL MWD Surveys
1612.00	1.230	175.170	1611.90	-0.13	-0.09	3.87	40°03'35.448°N	104°42'09.587°W	1.07	Begin BHI MWD+IFR Surveys
1655.00	1.320	233.880	1654.89	-0.88	-0.84	3.51	40°03'35.441°N	104°42'09.592°W	2.91	
1750.00	3.780	268.070	1749.79	-1.59	-1.59	-0.51	40°03'35.433°N	104°42'09.644°W	2.94	
1844.00	4.310	286.260	1843.56	-0.64	-0.71	-7.00	40°03'35.442°N	104°42'09.727°W	1.47	
1939.00	5.010	287.400	1938.25	1.67	1.53	-14.38	40°03'35.464°N	104°42'09.822°W	0.74	
2034.00	5.100	283.360	2032.88	3.96	3.75	-22.45	40°03'35.486°N	104°42'09.926°W	0.39	
2111.00	5.020	277.370	2109.58	5.25	4.97	-29.12	40°03'35.498°N	104°42'10.012°W	0.69	
2206.00	6.050	264.380	2204.14	5.38	5.01	-38.22	40°03'35.499°N	104°42'10.129°W	1.70	
2301.00	6.300	240.700	2298.60	2.43	1.97	-47.75	40°03'35.468°N	104°42'10.251°W	2.67	
2395.00	7.560	228.720	2391.92	-4.09	-4.63	-56.90	40°03'35.403°N	104°42'10.369°W	2.03	
2490.00	9.050	225.690	2485.92	-13.34	-13.98	-66.94	40°03'35.311°N	104°42'10.498°W	1.63	
2584.00	10.160	216.390	2578.61	-25.08	-25.81	-77.15	40°03'35.194°N	104°42'10.629°W	2.03	
2679.00	12.750	216.820	2671.70	-40.11	-40.95	-88.41	40°03'35.044°N	104°42'10.774°W	2.73	
2773.00	15.600	216.340	2762.83	-58.47	-59.44	-102.12	40°03'34.862°N	104°42'10.950°W	3.03	
2867.00	16.390	217.370	2853.19	-79.04	-80.16	-117.66	40°03'34.657°N	104°42'11.150°W	0.89	
2961.00	18.310	210.140	2942.92	-102.20	-103.48	-133.12	40°03'34.426°N	104°42'11.349°W	3.07	
3056.00	20.200	207.740	3032.61	-129.48	-130.90	-148.25	40°03'34.155°N	104°42'11.544°W	2.16	
3150.00	22.090	207.670	3120.27	-159.35	-160.92	-164.02	40°03'33.859°N	104°42'11.746°W	2.01	
3245.00	22.690	208.870	3208.11	-191.05	-192.79	-181.16	40°03'33.544°N	104°42'11.967°W	0.79	
3339.00	24.480	205.770	3294.26	-224.30	-226.21	-198.38	40°03'33.214°N	104°42'12.188°W	2.32	
3433.00	25.040	205.140	3379.62	-259.69	-261.76	-215.30	40°03'32.862°N	104°42'12.406°W	0.66	
3527.00	26.250	206.550	3464.36	-296.12	-298.36	-233.04	40°03'32.501°N	104°42'12.634°W	1.44	
3621.00	26.460	206.940	3548.59	-333.21	-335.63	-251.82	40°03'32.132°N	104°42'12.876°W	0.29	
3715.00	25.700	206.840	3633.02	-369.88	-372.48	-270.51	40°03'31.768°N	104°42'13.116°W	0.81	

REFERENCE WELLPATH IDENTIFICATION			
Operator	KERR-MCGEE OIL & GAS ONSHORE LP (LAMBERT STATE PLANE COORD)	Slot	SLOT#18 GOODIN 36N-B6HZ (413'FSL & 1570'FEL, SEC.07)
Area	COLORADO	Well	GOODIN 36N-B6HZ
Field	WELD COUNTY (KERR MCGEE)	Wellbore	GOODIN 36N-B6HZ AWB <13329>
Facility	SEC.07-T1N-R65W		

WELLPATH DATA (146 stations) † = interpolated/extrapolated station										
MD [ft]	Inclination [°]	Azimuth [°]	TVD [ft]	Vert Sect [ft]	North [ft]	East [ft]	Latitude	Longitude	DLS [°/100ft]	Comments
3809.00	25.980	205.540	3717.62	-406.47	-409.25	-288.59	40°03'31.405"N	104°42'13.348"W	0.67	
3903.00	25.190	208.430	3802.40	-442.47	-445.42	-306.99	40°03'31.047"N	104°42'13.585"W	1.57	
3998.00	23.480	209.420	3888.96	-476.55	-479.68	-325.92	40°03'30.709"N	104°42'13.828"W	1.85	
4092.00	21.640	208.520	3975.76	-507.92	-511.23	-343.39	40°03'30.397"N	104°42'14.053"W	1.99	
4186.00	19.580	209.710	4063.74	-536.68	-540.14	-359.48	40°03'30.111"N	104°42'14.260"W	2.24	
4280.00	18.220	214.190	4152.68	-562.37	-565.98	-375.54	40°03'29.856"N	104°42'14.467"W	2.11	
4374.00	19.690	214.540	4241.58	-587.40	-591.18	-392.78	40°03'29.607"N	104°42'14.688"W	1.57	
4469.00	20.460	210.920	4330.81	-614.66	-618.61	-410.38	40°03'29.336"N	104°42'14.915"W	1.54	
4563.00	18.450	208.790	4419.44	-641.64	-645.74	-425.99	40°03'29.068"N	104°42'15.115"W	2.27	
4657.00	16.970	208.810	4508.98	-666.57	-670.80	-439.77	40°03'28.820"N	104°42'15.293"W	1.57	
4751.00	15.930	210.770	4599.13	-689.55	-693.90	-452.98	40°03'28.592"N	104°42'15.463"W	1.25	
4845.00	13.960	203.660	4689.96	-710.91	-715.38	-464.13	40°03'28.379"N	104°42'15.606"W	2.86	
4940.00	12.580	205.980	4782.42	-730.62	-735.17	-473.26	40°03'28.184"N	104°42'15.723"W	1.56	
5034.00	12.050	205.820	4874.25	-748.57	-753.21	-482.02	40°03'28.006"N	104°42'15.836"W	0.56	
5128.00	12.600	203.390	4966.09	-766.73	-771.45	-490.36	40°03'27.825"N	104°42'15.943"W	0.80	
5222.00	11.060	203.190	5058.09	-784.36	-789.15	-497.98	40°03'27.650"N	104°42'16.041"W	1.64	
5316.00	11.170	207.450	5150.33	-800.65	-805.52	-505.73	40°03'27.489"N	104°42'16.141"W	0.88	
5410.00	11.820	202.980	5242.44	-817.52	-822.46	-513.69	40°03'27.321"N	104°42'16.243"W	1.17	
5504.00	10.820	202.010	5334.61	-834.50	-839.50	-520.75	40°03'27.153"N	104°42'16.334"W	1.08	
5599.00	9.440	198.570	5428.13	-850.09	-855.16	-526.58	40°03'26.998"N	104°42'16.409"W	1.59	
5693.00	8.230	204.130	5521.02	-863.49	-868.61	-531.78	40°03'26.865"N	104°42'16.476"W	1.57	
5787.00	6.550	201.440	5614.23	-874.58	-879.74	-536.49	40°03'26.755"N	104°42'16.537"W	1.82	
5881.00	6.370	207.140	5707.64	-884.16	-889.37	-540.83	40°03'26.660"N	104°42'16.592"W	0.71	
5976.00	4.880	207.430	5802.18	-892.40	-897.64	-545.10	40°03'26.578"N	104°42'16.647"W	1.57	
6070.00	3.500	199.670	5895.92	-898.62	-903.90	-547.90	40°03'26.516"N	104°42'16.683"W	1.58	
6164.00	1.060	226.870	5989.84	-901.91	-907.19	-549.50	40°03'26.484"N	104°42'16.704"W	2.77	
6259.00	0.380	275.540	6084.84	-902.47	-907.76	-550.46	40°03'26.478"N	104°42'16.716"W	0.90	
6447.00	0.600	304.640	6272.83	-901.83	-907.14	-551.89	40°03'26.484"N	104°42'16.735"W	0.17	
6542.00	0.460	324.620	6367.83	-901.23	-906.55	-552.52	40°03'26.490"N	104°42'16.743"W	0.24	
6636.00	0.360	28.940	6461.82	-900.67	-905.98	-552.60	40°03'26.496"N	104°42'16.744"W	0.47	
6730.00	4.540	356.520	6555.72	-896.69	-902.01	-552.68	40°03'26.535"N	104°42'16.745"W	4.51	
6825.00	14.900	354.640	6649.23	-880.72	-886.05	-554.05	40°03'26.693"N	104°42'16.762"W	10.91	
6919.00	23.900	351.490	6737.80	-849.76	-855.12	-558.01	40°03'26.998"N	104°42'16.813"W	9.64	
7013.00	29.510	351.170	6821.74	-807.96	-813.38	-564.38	40°03'27.411"N	104°42'16.895"W	5.97	
7107.00	39.060	353.160	6899.32	-755.49	-760.98	-571.48	40°03'27.929"N	104°42'16.987"W	10.23	
7201.00	47.890	354.990	6967.47	-691.16	-696.71	-578.07	40°03'28.564"N	104°42'17.071"W	9.49	
7295.00	56.210	356.300	7025.23	-617.26	-622.86	-583.64	40°03'29.294"N	104°42'17.143"W	8.92	
7390.00	61.060	357.900	7074.66	-536.24	-541.88	-587.72	40°03'30.094"N	104°42'17.195"W	5.30	
7484.00	70.100	358.040	7113.48	-450.77	-456.43	-590.74	40°03'30.938"N	104°42'17.234"W	9.62	
7525.00	75.080	0.000	7125.75	-411.66	-417.33	-591.40	40°03'31.325"N	104°42'17.243"W	12.97	
7579.00	76.630	358.880	7138.94	-359.30	-364.97	-591.91	40°03'31.842"N	104°42'17.249"W	3.50	
7626.00	80.340	359.110	7148.32	-313.26	-318.93	-592.72	40°03'32.297"N	104°42'17.260"W	7.91	
7671.00	82.570	359.910	7155.01	-268.76	-274.43	-593.10	40°03'32.737"N	104°42'17.265"W	5.26	
7730.00†	87.081	1.016	7160.33	-210.02	-215.69	-592.62	40°03'33.317"N	104°42'17.259"W	7.87	7" Casing Point
7756.00	89.070	1.500	7161.20	-184.05	-189.71	-592.05	40°03'33.574"N	104°42'17.251"W	7.87	

REFERENCE WELLPATH IDENTIFICATION			
Operator	KERR-MCGEE OIL & GAS ONSHORE LP (LAMBERT STATE PLANE COORD)	Slot	SLOT#18 GOODIN 36N-B6HZ (413'FSL & 1570'FEL, SEC.07)
Area	COLORADO	Well	GOODIN 36N-B6HZ
Field	WELD COUNTY (KERR MCGEE)	Wellbore	GOODIN 36N-B6HZ AWB <13329>
Facility	SEC.07-T1N-R65W		

WELLPATH DATA (146 stations)										
MD [ft]	Inclination [°]	Azimuth [°]	TVD [ft]	Vert Sect [ft]	North [ft]	East [ft]	Latitude	Longitude	DLS [°/100ft]	Comments
7819.00	89.660	1.390	7161.90	-121.09	-126.74	-590.46	40°03'34.196"N	104°42'17.231"W	0.95	
7914.00	90.460	0.710	7161.80	-26.13	-31.76	-588.72	40°03'35.135"N	104°42'17.208"W	1.11	
8008.00	90.830	1.110	7160.74	67.83	62.23	-587.23	40°03'36.064"N	104°42'17.189"W	0.58	
8103.00	90.860	0.200	7159.34	162.80	157.21	-586.14	40°03'37.003"N	104°42'17.175"W	0.96	
8198.00	91.040	0.010	7157.77	257.78	252.20	-585.97	40°03'37.941"N	104°42'17.173"W	0.28	
8293.00	90.400	0.550	7156.57	352.76	347.19	-585.51	40°03'38.880"N	104°42'17.167"W	0.88	
8387.00	89.720	0.740	7156.48	446.74	441.18	-584.45	40°03'39.809"N	104°42'17.154"W	0.75	
8481.00	89.350	0.190	7157.24	540.72	535.17	-583.69	40°03'40.738"N	104°42'17.144"W	0.71	
8576.00	90.460	359.650	7157.40	635.72	630.17	-583.82	40°03'41.676"N	104°42'17.146"W	1.30	
8671.00	90.060	359.590	7156.97	730.71	725.17	-584.45	40°03'42.615"N	104°42'17.154"W	0.43	
8765.00	90.060	359.280	7156.87	824.71	819.16	-585.37	40°03'43.544"N	104°42'17.166"W	0.33	
8859.00	89.720	359.050	7157.05	918.71	913.15	-586.74	40°03'44.473"N	104°42'17.183"W	0.44	
8954.00	89.500	359.240	7157.69	1013.71	1008.14	-588.16	40°03'45.412"N	104°42'17.202"W	0.31	
9049.00	89.220	358.540	7158.75	1108.70	1103.12	-590.00	40°03'46.350"N	104°42'17.225"W	0.79	
9143.00	89.320	359.630	7159.95	1202.69	1197.09	-591.50	40°03'47.279"N	104°42'17.245"W	1.16	
9237.00	89.040	0.080	7161.30	1296.67	1291.08	-591.74	40°03'48.208"N	104°42'17.248"W	0.56	
9332.00	89.100	0.350	7162.84	1391.65	1386.07	-591.38	40°03'49.146"N	104°42'17.243"W	0.29	
9427.00	90.030	359.480	7163.56	1486.65	1481.07	-591.53	40°03'50.085"N	104°42'17.245"W	1.34	
9522.00	89.500	359.000	7163.95	1581.64	1576.06	-592.79	40°03'51.024"N	104°42'17.261"W	0.75	
9616.00	89.220	359.190	7165.00	1675.64	1670.04	-594.27	40°03'51.953"N	104°42'17.280"W	0.36	
9710.00	88.170	0.650	7167.14	1769.60	1764.01	-594.40	40°03'52.881"N	104°42'17.282"W	1.91	
9804.00	89.040	0.460	7169.43	1863.56	1857.98	-593.49	40°03'53.810"N	104°42'17.270"W	0.95	
9910.00	89.630	359.770	7170.66	1969.54	1963.97	-593.28	40°03'54.857"N	104°42'17.268"W	0.86	
9992.00	90.300	359.880	7170.71	2051.54	2045.97	-593.53	40°03'55.668"N	104°42'17.271"W	0.83	
10086.00	88.860	358.930	7171.40	2145.53	2139.96	-594.51	40°03'56.596"N	104°42'17.284"W	1.84	
10180.00	89.500	358.720	7172.74	2239.52	2233.93	-596.43	40°03'57.525"N	104°42'17.308"W	0.72	
10275.00	90.360	359.020	7172.86	2334.51	2328.91	-598.31	40°03'58.464"N	104°42'17.332"W	0.96	
10369.00	90.550	359.220	7172.11	2428.51	2422.89	-599.75	40°03'59.392"N	104°42'17.351"W	0.29	
10463.00	90.520	359.850	7171.24	2522.50	2516.89	-600.51	40°04'00.321"N	104°42'17.361"W	0.67	
10557.00	90.150	0.950	7170.69	2616.49	2610.88	-599.86	40°04'01.250"N	104°42'17.352"W	1.23	
10652.00	88.760	359.980	7171.59	2711.46	2705.87	-599.09	40°04'02.189"N	104°42'17.343"W	1.78	
10746.00	89.500	359.250	7173.02	2805.45	2799.85	-599.72	40°04'03.118"N	104°42'17.351"W	1.11	
10840.00	88.610	0.290	7174.57	2899.44	2893.84	-600.09	40°04'04.046"N	104°42'17.356"W	1.46	
10934.00	89.900	359.680	7175.79	2993.42	2987.83	-600.12	40°04'04.975"N	104°42'17.356"W	1.52	
11028.00	88.890	359.230	7176.78	3087.41	3081.82	-601.01	40°04'05.904"N	104°42'17.368"W	1.18	
11123.00	89.630	358.780	7178.01	3182.40	3176.79	-602.66	40°04'06.843"N	104°42'17.389"W	0.91	
11218.00	89.380	0.080	7178.83	3277.40	3271.78	-603.61	40°04'07.781"N	104°42'17.401"W	1.39	
11312.00	90.000	359.740	7179.34	3371.39	3365.78	-603.76	40°04'08.710"N	104°42'17.403"W	0.75	
11407.00	89.690	0.430	7179.60	3466.39	3460.78	-603.61	40°04'09.649"N	104°42'17.401"W	0.80	
11501.00	90.670	0.010	7179.30	3560.38	3554.78	-603.25	40°04'10.578"N	104°42'17.396"W	1.13	
11594.00	90.610	0.290	7178.26	3653.36	3647.77	-603.01	40°04'11.497"N	104°42'17.393"W	0.31	
11688.00	89.560	0.930	7178.12	3747.34	3741.76	-602.01	40°04'12.426"N	104°42'17.381"W	1.31	
11783.00	89.810	0.590	7178.64	3842.32	3836.75	-600.75	40°04'13.365"N	104°42'17.364"W	0.44	
11877.00	90.090	0.010	7178.73	3936.30	3930.75	-600.26	40°04'14.293"N	104°42'17.358"W	0.69	
11971.00	90.090	359.190	7178.58	4030.30	4024.75	-600.91	40°04'15.222"N	104°42'17.367"W	0.87	

REFERENCE WELLPATH IDENTIFICATION									
Operator	KERR-MCGEE OIL & GAS ONSHORE LP (LAMBERT STATE PLANE COORD)					Slot	SLOT#18 GOODIN 36N-B6HZ (413'FSL & 1570'FEL, SEC.07)		
Area	COLORADO					Well	GOODIN 36N-B6HZ		
Field	WELD COUNTY (KERR MCGEE)					Wellbore	GOODIN 36N-B6HZ AWB <13329>		
Facility	SEC.07-T1N-R65W								

WELLPATH DATA (146 stations)										
MD [ft]	Inclination [°]	Azimuth [°]	TVD [ft]	Vert Sect [ft]	North [ft]	East [ft]	Latitude	Longitude	DLS [°/100ft]	Comments
12066.00	90.090	358.790	7178.43	4125.30	4119.73	-602.59	40°04'16.161"N	104°42'17.388"W	0.42	
12254.00	90.580	357.690	7177.33	4313.25	4307.64	-608.36	40°04'18.018"N	104°42'17.462"W	0.64	
12349.00	89.780	358.950	7177.03	4408.23	4402.60	-611.15	40°04'18.956"N	104°42'17.498"W	1.57	
12537.00	89.500	358.520	7178.21	4596.21	4590.55	-615.30	40°04'20.814"N	104°42'17.552"W	0.27	
12631.00	91.070	359.180	7177.75	4690.20	4684.52	-617.18	40°04'21.742"N	104°42'17.576"W	1.81	
12726.00	91.290	358.910	7175.79	4785.18	4779.49	-618.77	40°04'22.681"N	104°42'17.596"W	0.37	
12820.00	91.010	358.420	7173.90	4879.15	4873.44	-620.96	40°04'23.609"N	104°42'17.625"W	0.60	
12915.00	90.770	359.450	7172.43	4974.13	4968.41	-622.72	40°04'24.548"N	104°42'17.647"W	1.11	
13103.00	91.530	358.450	7168.65	5162.08	5156.34	-626.17	40°04'26.405"N	104°42'17.692"W	0.67	
13274.00	91.590	358.730	7164.00	5333.00	5327.23	-630.37	40°04'28.094"N	104°42'17.746"W	0.17	Last BHI MWD+IFR Surveys
13329.00	91.590	358.730	7162.47	5387.98	5382.19	-631.59	40°04'28.637"N	104°42'17.762"W	0.00	Projection to Bit

HOLE & CASING SECTIONS - Ref Wellbore: GOODIN 36N-B6HZ AWB <13329> Ref Wellpath: GOODIN 36N-B6HZ AWP									
String/Diameter	Start MD [ft]	End MD [ft]	Interval [ft]	Start TVD [ft]	End TVD [ft]	Start N/S [ft]	Start E/W [ft]	End N/S [ft]	End E/W [ft]
13.5in Open Hole	25.00	1579.00	1554.00	25.00	1578.91	0.00	0.00	0.60	3.71
9.625in Casing Surface	25.00	1590.00	1565.00	25.00	1589.90	0.00	0.00	0.37	3.78
8.75in Open Hole	1590.00	7736.00	6146.00	1589.90	7160.61	0.37	3.78	-209.70	-592.51
7in Casing Intermediate	25.00	7730.00	7705.00	25.00	7160.33	0.00	0.00	-215.69	-592.62
6.125in Open Hole	7736.00	13329.00	5593.00	7160.61	7162.47	-209.70	-592.51	5382.19	-631.59

TARGETS									
Name	TVD [ft]	North [ft]	East [ft]	Grid East [US ft]	Grid North [US ft]	Latitude	Longitude	Shape	
SEC.07-T1N-R65W SECTION LINES	0.00	0.00	-15.16	3223158.73	1265650.78	40°03'35.449"N	104°42'09.832"W	polygon	
GOODIN 36N-B6HZ BHL ON PLAT REV-1 (500'FSL & 2104'FEL, SEC.06)	7164.00	5382.43	-589.12	3222536.42	1271027.62	40°04'28.639"N	104°42'17.215"W	point	
GOODIN 36N-B6HZ BHL REV-2 (500'FSL & 2134'FEL, SEC.06)	7164.00	5382.43	-619.12	3222506.42	1271027.35	40°04'28.639"N	104°42'17.601"W	point	
GOODIN 36N-B6HZ LANDBOX	7164.00	0.00	0.00	3223173.89	1265650.92	40°03'35.449"N	104°42'09.637"W	polygon	

WELLPATH COMPOSITION - Ref Wellbore: GOODIN 36N-B6HZ AWB <13329> Ref Wellpath: GOODIN 36N-B6HZ AWP									
Start MD [ft]	End MD [ft]	Positional Uncertainty Model		Log Name/Comment		Wellbore			
25.00	1545.00	ISCWSA MWD, Rev. 2 (Standard)		CATHEDRAL MWD SURVEYS <101-1545>		GOODIN 36N-B6HZ AWB <13329>			
1545.00	7671.00	ISCWSA MWD, Rev. 2, axial magnetic correction (Standard) (MagVAR IFR Wattenberg)		BHI MWD+IFR SURVEYS 8 3/4" HOLE <1612-7671>		GOODIN 36N-B6HZ AWB <13329>			
7671.00	13274.00	ISCWSA MWD, Rev. 2, axial magnetic correction (Standard) (MagVAR IFR Wattenberg)		BHI MWD+IFR SURVEYS 6 1/8" HOLE <7756-13274>		GOODIN 36N-B6HZ AWB <13329>			
13274.00	13329.00	Blind Drilling (std)		Projection to bit		GOODIN 36N-B6HZ AWB <13329>			

REFERENCE WELLPATH IDENTIFICATION			
Operator	KERR-MCGEE OIL & GAS ONSHORE LP (LAMBERT STATE PLANE COORD)	Slot	SLOT#18 GOODIN 36N-B6HZ (413'FSL & 1570'FEL, SEC.07)
Area	COLORADO	Well	GOODIN 36N-B6HZ
Field	WELD COUNTY (KERR MCGEE)	Wellbore	GOODIN 36N-B6HZ AWB <13329>
Facility	SEC.07-T1N-R65W		

WELLPATH COMMENTS				
MD [ft]	Inclination [°]	Azimuth [°]	TVD [ft]	Comment
25.00	0.000	338.500	25.00	Tie-On
101.00	0.300	338.500	101.00	Begin CATHEDRAL MWD Surveys
1545.00	1.400	144.300	1544.91	Tie-Into CATHEDRAL MWD Surveys
1612.00	1.230	175.170	1611.90	Begin BHI MWD+IFR Surveys
7730.00	87.081	1.016	7160.33	7" Casing Point
13274.00	91.590	358.730	7164.00	Last BHI MWD+IFR Surveys
13329.00	91.590	358.730	7162.47	Projection to Bit