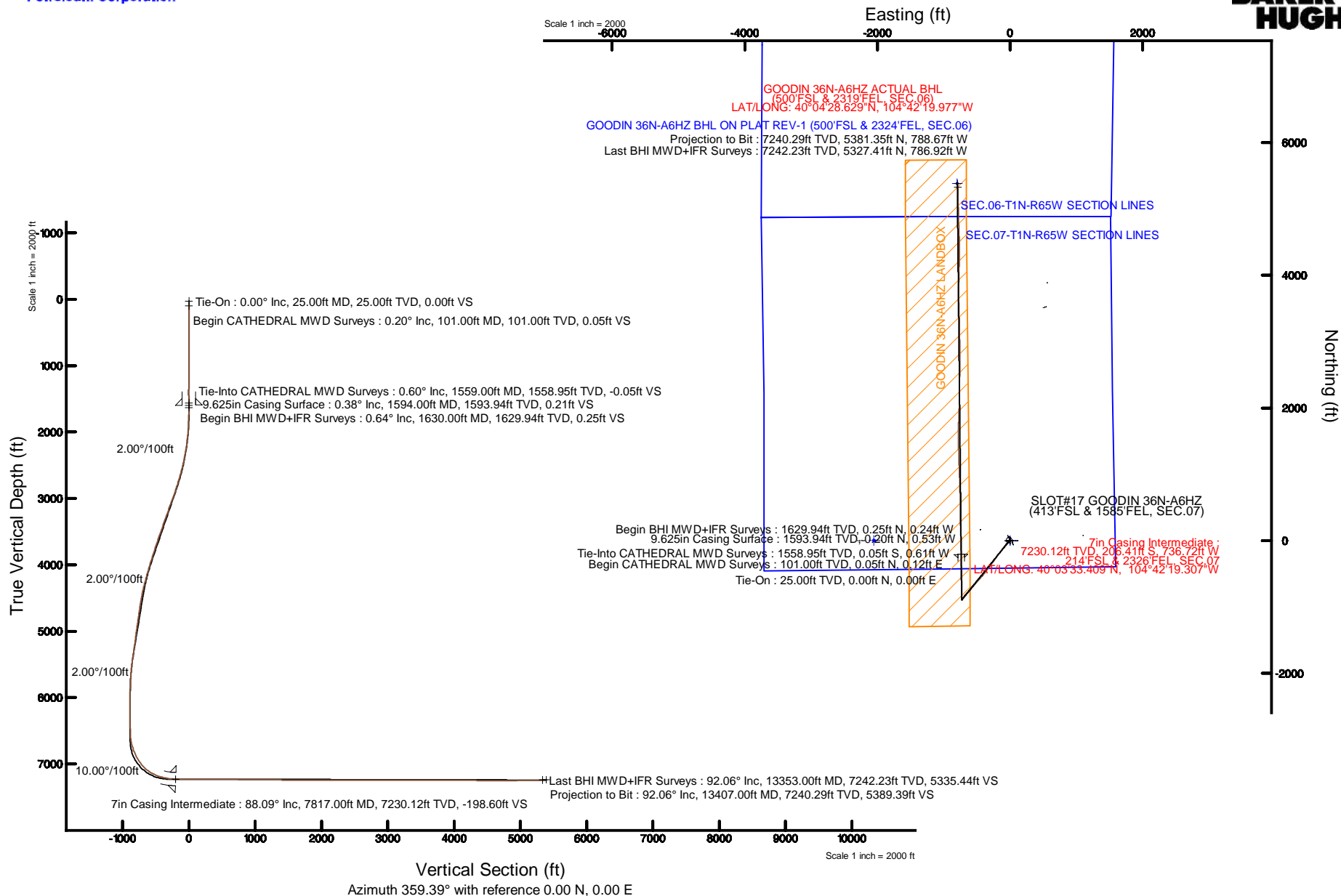


# KERR-MCGEE OIL & GAS ONSHORE LP (LAMBERT STATE PLANE COORD)

Location: COLORADO Slot: SLOT#17 GOODIN 36N-A6HZ (413°FSL & 1585°FEL, SEC.07)  
 Field: WELD COUNTY (KERR MCGEE) Well: GOODIN 36N-A6HZ  
 Facility: SEC.07-T1N-R65W Wellbore: GOODIN 36N-A6HZ PWB

Plot reference wellpath is GOODIN 36N-A6HZ (REV-B.0) PWP	
True vertical depths are referenced to H&P 307 (25KB) (RKB)	Grid System: NAD83 / Lambert Colorado SP, Northern Zone (501), US feet
Measured depths are referenced to H&P 307 (25KB) (RKB)	North Reference: True north
H&P 307 (25KB) (RKB) to Mean Sea Level: 5004 feet	Scale: True distance
Mean Sea Level to Mud line (At Slot: SLOT#17 GOODIN 36N-A6HZ (413°FSL & 1585°FEL, SEC.07)): 0 feet	Depths are in feet
Coordinates are in feet referenced to Slot	Created by: precain on 4/20/2015



REFERENCE WELLPATH IDENTIFICATION			
Operator	KERR-MCGEE OIL & GAS ONSHORE LP (LAMBERT STATE PLANE COORD)	Slot	SLOT#17 GOODIN 36N-A6HZ (413'FSL & 1585'FEL, SEC.07)
Area	COLORADO	Well	GOODIN 36N-A6HZ
Field	WELD COUNTY (KERR MCGEE)	Wellbore	GOODIN 36N-A6HZ AWB <101-13407>
Facility	SEC.07-T1N-R65W		

REPORT SETUP INFORMATION			
Projection System	NAD83 / Lambert Colorado SP, Northern Zone (501), US feet	Software System	WellArchitect® 4.1.1
North Reference	True	User	Precain
Scale	0.999962	Report Generated	4/20/2015 at 3:07:16 PM
Convergence at slot	0.52° East	Database/Source file	WellArchitectDC/GOODIN_36N-A6HZ_AWB__101-13407_.xml

WELLPATH LOCATION						
	Local coordinates		Grid coordinates		Geographic coordinates	
	North[ft]	East[ft]	Easting[US ft]	Northing[US ft]	Latitude	Longitude
Slot Location	-79.01	-1103.74	3223158.73	1265650.78	40°03'35.449"N	104°42'09.832"W
Facility Reference Pt			3224261.66	1265739.76	40°03'36.230"N	104°41'55.637"W
Field Reference Pt			3197771.84	1268891.29	40°04'09.600"N	104°47'36.000"W

WELLPATH DATUM			
Calculation method	Minimum curvature	H&P 307 (25'KB) (RKB) to Facility Vertical Datum	5004.00ft
Horizontal Reference Pt	Slot	H&P 307 (25'KB) (RKB) to Mean Sea Level	5004.00ft
Vertical Reference Pt	H&P 307 (25'KB) (RKB)	H&P 307 (25'KB) (RKB) to Mud Line at Slot (SLOT#17 GOODIN 36N-A6HZ (413'FSL & 1585'FEL, SEC.07))	5004.00ft
MD Reference Pt	H&P 307 (25'KB) (RKB)	Section Origin	N 0.00, E 0.00 ft
Field Vertical Reference	Mean Sea Level	Section Azimuth	359.39°

REFERENCE WELLPATH IDENTIFICATION			
Operator	KERR-MCGEE OIL & GAS ONSHORE LP (LAMBERT STATE PLANE COORD)	Slot	SLOT#17 GOODIN 36N-A6HZ (413'FSL & 1585'FEL, SEC.07)
Area	COLORADO	Well	GOODIN 36N-A6HZ
Field	WELD COUNTY (KERR MCGEE)	Wellbore	GOODIN 36N-A6HZ AWB <101-13407>
Facility	SEC.07-T1N-R65W		

WELLPATH DATA (149 stations) † = interpolated/extrapolated station										
MD [ft]	Inclination [°]	Azimuth [°]	TVD [ft]	Vert Sect [ft]	North [ft]	East [ft]	Latitude	Longitude	DLS [°/100ft]	Comments
0.00†	0.000	65.600	0.00	0.00	0.00	0.00	40°03'35.449"N	104°42'09.832"W	0.00	
25.00	0.000	65.600	25.00	0.00	0.00	0.00	40°03'35.449"N	104°42'09.832"W	0.00	Tie-On
101.00	0.200	65.600	101.00	0.05	0.05	0.12	40°03'35.450"N	104°42'09.830"W	0.26	Begin CATHEDRAL MWD Surveys
179.00	0.100	229.500	179.00	0.06	0.07	0.19	40°03'35.450"N	104°42'09.830"W	0.38	
257.00	0.300	240.600	257.00	-0.08	-0.08	-0.04	40°03'35.448"N	104°42'09.832"W	0.26	
338.00	0.300	244.500	338.00	-0.27	-0.27	-0.41	40°03'35.446"N	104°42'09.837"W	0.03	
418.00	0.400	278.300	418.00	-0.31	-0.32	-0.88	40°03'35.446"N	104°42'09.843"W	0.28	
498.00	0.100	98.300	498.00	-0.28	-0.29	-1.09	40°03'35.446"N	104°42'09.846"W	0.62	
578.00	0.400	54.600	578.00	-0.13	-0.14	-0.79	40°03'35.448"N	104°42'09.842"W	0.42	
658.00	0.600	55.400	657.99	0.26	0.26	-0.22	40°03'35.452"N	104°42'09.835"W	0.25	
738.00	0.600	65.500	737.99	0.66	0.67	0.51	40°03'35.456"N	104°42'09.825"W	0.13	
818.00	0.600	54.300	817.98	1.08	1.09	1.23	40°03'35.460"N	104°42'09.816"W	0.15	
898.00	0.600	58.300	897.98	1.53	1.55	1.93	40°03'35.464"N	104°42'09.807"W	0.05	
978.00	0.300	91.700	977.98	1.74	1.77	2.49	40°03'35.466"N	104°42'09.800"W	0.48	
1058.00	0.300	193.200	1057.98	1.53	1.56	2.65	40°03'35.464"N	104°42'09.798"W	0.58	
1138.00	0.300	181.700	1137.97	1.12	1.14	2.60	40°03'35.460"N	104°42'09.799"W	0.08	
1218.00	0.600	200.300	1217.97	0.52	0.54	2.45	40°03'35.454"N	104°42'09.801"W	0.41	
1298.00	1.000	227.600	1297.96	-0.34	-0.32	1.79	40°03'35.446"N	104°42'09.809"W	0.68	
1378.00	0.800	263.500	1377.96	-0.86	-0.86	0.72	40°03'35.441"N	104°42'09.823"W	0.73	
1458.00	0.600	292.100	1457.95	-0.76	-0.76	-0.23	40°03'35.441"N	104°42'09.835"W	0.50	
1538.00	0.500	1.600	1537.95	-0.25	-0.26	-0.60	40°03'35.446"N	104°42'09.840"W	0.79	
1559.00	0.600	356.700	1558.95	-0.05	-0.05	-0.61	40°03'35.448"N	104°42'09.840"W	0.53	Tie-Into CATHEDRAL MWD Surveys
1630.00	0.640	100.140	1629.94	0.25	0.25	-0.24	40°03'35.451"N	104°42'09.835"W	1.37	Begin BHI MWD+IFR Surveys
1724.00	1.420	217.630	1723.93	-0.76	-0.77	-0.43	40°03'35.441"N	104°42'09.838"W	1.92	
1819.00	2.900	231.100	1818.86	-3.18	-3.21	-3.02	40°03'35.417"N	104°42'09.871"W	1.64	
1914.00	4.820	235.400	1913.64	-6.90	-6.99	-8.18	40°03'35.380"N	104°42'09.937"W	2.04	
2008.00	7.110	229.600	2007.13	-12.83	-13.00	-15.86	40°03'35.321"N	104°42'10.036"W	2.52	
2103.00	8.890	223.440	2101.20	-21.87	-22.14	-25.39	40°03'35.230"N	104°42'10.158"W	2.08	
2198.00	10.970	224.110	2194.78	-33.57	-33.96	-36.73	40°03'35.113"N	104°42'10.304"W	2.19	
2293.00	13.070	220.500	2287.69	-48.09	-48.62	-49.99	40°03'34.969"N	104°42'10.475"W	2.35	
2387.00	14.480	217.610	2378.98	-65.33	-66.01	-64.07	40°03'34.797"N	104°42'10.656"W	1.67	
2482.00	16.200	219.580	2470.60	-84.79	-85.64	-79.76	40°03'34.603"N	104°42'10.858"W	1.89	
2576.00	17.950	217.760	2560.45	-106.17	-107.20	-96.99	40°03'34.390"N	104°42'11.079"W	1.95	
2670.00	20.580	216.770	2649.18	-130.66	-131.89	-115.75	40°03'34.146"N	104°42'11.321"W	2.82	
2765.00	20.960	218.170	2738.01	-157.17	-158.62	-136.25	40°03'33.881"N	104°42'11.584"W	0.66	
2859.00	22.160	218.950	2825.43	-183.95	-185.63	-157.78	40°03'33.615"N	104°42'11.861"W	1.31	
2953.00	23.240	218.420	2912.14	-212.02	-213.95	-180.45	40°03'33.335"N	104°42'12.153"W	1.17	
3048.00	24.130	215.340	2999.14	-242.31	-244.47	-203.33	40°03'33.033"N	104°42'12.447"W	1.60	
3142.00	25.500	214.870	3084.46	-274.34	-276.75	-226.02	40°03'32.714"N	104°42'12.739"W	1.47	
3236.00	23.330	212.270	3170.06	-306.46	-309.09	-247.53	40°03'32.394"N	104°42'13.015"W	2.58	
3331.00	24.210	216.920	3257.00	-337.71	-340.57	-269.27	40°03'32.083"N	104°42'13.295"W	2.18	
3424.00	23.950	217.980	3341.91	-367.59	-370.70	-292.34	40°03'31.786"N	104°42'13.592"W	0.54	
3518.00	23.950	218.760	3427.82	-397.25	-400.61	-316.03	40°03'31.490"N	104°42'13.896"W	0.34	
3613.00	24.630	218.730	3514.41	-427.47	-431.09	-340.49	40°03'31.189"N	104°42'14.211"W	0.72	
3707.00	24.110	216.000	3600.03	-458.03	-461.91	-364.03	40°03'30.884"N	104°42'14.514"W	1.32	

REFERENCE WELLPATH IDENTIFICATION			
Operator	KERR-MCGEE OIL & GAS ONSHORE LP (LAMBERT STATE PLANE COORD)	Slot	SLOT#17 GOODIN 36N-A6HZ (413'FSL & 1585'FEL, SEC.07)
Area	COLORADO	Well	GOODIN 36N-A6HZ
Field	WELD COUNTY (KERR MCGEE)	Wellbore	GOODIN 36N-A6HZ AWP <101-13407>
Facility	SEC.07-T1N-R65W		

## WELLPATH DATA (149 stations) † = interpolated/extrapolated station

MD [ft]	Inclination [°]	Azimuth [°]	TVD [ft]	Vert Sect [ft]	North [ft]	East [ft]	Latitude	Longitude	DLS [°/100ft]	Comments
3801.00	22.790	218.010	3686.27	-487.67	-491.79	-386.53	40°03'30.589"N	104°42'14.803"W	1.64	
3895.00	23.400	220.990	3772.74	-515.86	-520.22	-409.98	40°03'30.308"N	104°42'15.105"W	1.40	
3989.00	23.440	221.570	3858.99	-543.67	-548.30	-434.63	40°03'30.031"N	104°42'15.422"W	0.25	
4084.00	23.890	222.000	3946.01	-571.83	-576.73	-460.04	40°03'29.750"N	104°42'15.748"W	0.51	
4178.00	21.380	221.890	4032.76	-598.48	-603.63	-484.22	40°03'29.484"N	104°42'16.059"W	2.67	
4272.00	21.200	221.940	4120.34	-623.63	-629.03	-507.02	40°03'29.233"N	104°42'16.353"W	0.19	
4366.00	19.830	220.670	4208.38	-648.14	-653.77	-528.77	40°03'28.988"N	104°42'16.632"W	1.53	
4460.00	19.070	219.990	4297.02	-671.78	-677.63	-549.03	40°03'28.752"N	104°42'16.893"W	0.84	
4554.00	15.540	218.240	4386.75	-693.26	-699.29	-566.70	40°03'28.538"N	104°42'17.120"W	3.80	
4649.00	13.230	217.810	4478.76	-711.69	-717.88	-581.24	40°03'28.355"N	104°42'17.307"W	2.43	
4743.00	12.150	217.580	4570.46	-727.89	-734.21	-593.87	40°03'28.193"N	104°42'17.469"W	1.15	
4837.00	10.770	217.560	4662.59	-742.57	-749.02	-605.26	40°03'28.047"N	104°42'17.616"W	1.47	
4931.00	10.660	224.020	4754.95	-755.67	-762.23	-616.65	40°03'27.916"N	104°42'17.762"W	1.28	
5026.00	11.920	227.620	4848.11	-768.46	-775.16	-630.01	40°03'27.789"N	104°42'17.934"W	1.52	
5120.00	12.420	226.790	4940.00	-781.77	-788.63	-644.55	40°03'27.656"N	104°42'18.121"W	0.56	
5214.00	10.390	222.300	5032.14	-794.82	-801.82	-657.62	40°03'27.525"N	104°42'18.289"W	2.36	
5308.00	9.310	218.160	5124.76	-806.96	-814.07	-668.02	40°03'27.404"N	104°42'18.423"W	1.37	
5402.00	9.840	219.090	5217.45	-819.07	-826.28	-677.78	40°03'27.283"N	104°42'18.549"W	0.59	
5496.00	10.050	217.190	5310.03	-831.73	-839.05	-687.81	40°03'27.157"N	104°42'18.678"W	0.41	
5590.00	10.570	217.900	5402.52	-844.96	-852.39	-698.06	40°03'27.025"N	104°42'18.809"W	0.57	
5685.00	8.400	214.390	5496.21	-857.46	-864.99	-707.33	40°03'26.901"N	104°42'18.929"W	2.36	
5779.00	6.620	211.870	5589.40	-867.66	-875.26	-714.07	40°03'26.799"N	104°42'19.015"W	1.93	
5873.00	4.580	206.880	5682.95	-875.56	-883.21	-718.63	40°03'26.721"N	104°42'19.074"W	2.23	
5967.00	2.840	195.200	5776.75	-881.13	-888.80	-720.94	40°03'26.666"N	104°42'19.104"W	2.01	
6061.00	1.790	187.600	5870.67	-884.82	-892.50	-721.74	40°03'26.629"N	104°42'19.114"W	1.16	
6156.00	1.870	152.940	5965.63	-887.68	-895.36	-721.24	40°03'26.601"N	104°42'19.107"W	1.15	
6250.00	0.260	38.890	6059.61	-888.89	-896.56	-720.40	40°03'26.589"N	104°42'19.097"W	2.12	
6534.00	1.790	293.440	6343.57	-886.58	-894.29	-724.07	40°03'26.611"N	104°42'19.144"W	0.66	
6722.00	1.250	320.330	6531.50	-883.79	-891.54	-728.07	40°03'26.638"N	104°42'19.195"W	0.47	
6816.00	7.650	3.950	6625.18	-876.75	-884.50	-728.30	40°03'26.708"N	104°42'19.198"W	7.23	
6911.00	15.030	0.850	6718.26	-858.11	-865.85	-727.68	40°03'26.892"N	104°42'19.190"W	7.79	
7005.00	21.020	1.660	6807.61	-829.05	-836.79	-727.01	40°03'27.180"N	104°42'19.182"W	6.38	
7099.00	27.760	359.940	6893.17	-790.27	-798.00	-726.54	40°03'27.563"N	104°42'19.176"W	7.21	
7193.00	35.080	359.610	6973.33	-741.30	-749.03	-726.75	40°03'28.047"N	104°42'19.178"W	7.79	
7287.00	43.530	359.460	7046.00	-681.81	-689.54	-727.24	40°03'28.635"N	104°42'19.185"W	8.99	
7381.00	55.520	1.140	7106.91	-610.45	-618.18	-726.77	40°03'29.340"N	104°42'19.179"W	12.83	
7476.00	64.480	0.110	7154.36	-528.29	-535.99	-725.91	40°03'30.152"N	104°42'19.168"W	9.48	
7523.00	68.170	358.870	7173.24	-485.25	-492.96	-726.30	40°03'30.577"N	104°42'19.173"W	8.21	
7570.00	71.610	357.920	7189.39	-441.13	-448.85	-727.54	40°03'31.013"N	104°42'19.189"W	7.56	
7617.00	75.200	356.930	7202.81	-396.12	-403.86	-729.56	40°03'31.458"N	104°42'19.215"W	7.90	
7665.00	78.040	356.980	7213.92	-349.47	-357.23	-732.04	40°03'31.919"N	104°42'19.247"W	5.92	
7712.00	81.870	358.280	7222.12	-303.22	-311.00	-733.95	40°03'32.375"N	104°42'19.271"W	8.59	
7779.00	87.130	358.470	7228.54	-236.57	-244.36	-735.84	40°03'33.034"N	104°42'19.296"W	7.86	
7817.00†	88.091	358.882	7230.12	-198.60	-206.41	-736.72	40°03'33.409"N	104°42'19.307"W	2.75	7" Casing Point
7851.00	88.950	359.250	7231.00	-164.61	-172.42	-737.28	40°03'33.745"N	104°42'19.314"W	2.75	

REFERENCE WELLPATH IDENTIFICATION			
Operator	KERR-MCGEE OIL & GAS ONSHORE LP (LAMBERT STATE PLANE COORD)	Slot	SLOT#17 GOODIN 36N-A6HZ (413'FSL & 1585'FEL, SEC.07)
Area	COLORADO	Well	GOODIN 36N-A6HZ
Field	WELD COUNTY (KERR MCGEE)	Wellbore	GOODIN 36N-A6HZ AWB <101-13407>
Facility	SEC.07-T1N-R65W		

WELLPATH DATA (149 stations)										
MD [ft]	Inclination [°]	Azimuth [°]	TVD [ft]	Vert Sect [ft]	North [ft]	East [ft]	Latitude	Longitude	DLS [°/100ft]	Comments
7914.00	89.410	358.550	7231.90	-101.62	-109.44	-738.48	40°03'34.367"N	104°42'19.330"W	1.33	
8008.00	90.520	359.650	7231.96	-7.63	-15.45	-739.96	40°03'35.296"N	104°42'19.349"W	1.66	
8103.00	89.350	359.110	7232.07	87.37	79.54	-740.99	40°03'36.235"N	104°42'19.362"W	1.36	
8198.00	89.440	358.650	7233.07	182.36	174.51	-742.85	40°03'37.173"N	104°42'19.386"W	0.49	
8292.00	89.750	357.550	7233.73	276.33	268.46	-745.96	40°03'38.102"N	104°42'19.426"W	1.22	
8387.00	90.670	359.250	7233.39	371.31	363.42	-748.61	40°03'39.040"N	104°42'19.460"W	2.03	
8481.00	90.210	359.310	7232.66	465.31	457.41	-749.80	40°03'39.969"N	104°42'19.475"W	0.49	
8576.00	89.010	359.280	7233.31	560.31	552.39	-750.96	40°03'40.908"N	104°42'19.490"W	1.26	
8671.00	89.930	0.410	7234.19	655.30	647.39	-751.22	40°03'41.847"N	104°42'19.494"W	1.53	
8765.00	88.430	358.450	7235.53	749.28	741.37	-752.16	40°03'42.775"N	104°42'19.506"W	2.63	
8859.00	88.980	358.100	7237.66	843.24	835.30	-754.99	40°03'43.703"N	104°42'19.542"W	0.69	
8954.00	89.660	357.950	7238.79	938.20	930.24	-758.26	40°03'44.642"N	104°42'19.584"W	0.73	
9049.00	90.520	357.650	7238.64	1033.16	1025.16	-761.91	40°03'45.580"N	104°42'19.631"W	0.96	
9143.00	89.720	358.090	7238.44	1127.13	1119.10	-765.40	40°03'46.508"N	104°42'19.676"W	0.97	
9237.00	88.610	358.070	7239.81	1221.09	1213.03	-768.55	40°03'47.436"N	104°42'19.717"W	1.18	
9332.00	89.560	358.290	7241.33	1316.06	1307.97	-771.57	40°03'48.375"N	104°42'19.756"W	1.03	
9427.00	88.790	0.190	7242.69	1411.04	1402.95	-772.83	40°03'49.313"N	104°42'19.772"W	2.16	
9521.00	88.020	357.470	7245.31	1504.99	1496.88	-774.74	40°03'50.241"N	104°42'19.796"W	3.01	
9616.00	89.130	0.530	7247.67	1599.95	1591.83	-776.40	40°03'51.180"N	104°42'19.818"W	3.43	
9710.00	90.550	1.030	7247.94	1693.92	1685.82	-775.12	40°03'52.108"N	104°42'19.801"W	1.60	
9804.00	89.660	1.880	7247.76	1787.86	1779.78	-772.73	40°03'53.037"N	104°42'19.771"W	1.31	
9898.00	91.410	2.440	7246.89	1881.74	1873.71	-769.19	40°03'53.965"N	104°42'19.725"W	1.95	
9992.00	91.130	1.120	7244.80	1975.63	1967.64	-766.27	40°03'54.894"N	104°42'19.688"W	1.44	
10086.00	89.290	1.520	7244.46	2069.57	2061.61	-764.11	40°03'55.822"N	104°42'19.660"W	2.00	
10180.00	89.690	1.120	7245.30	2163.52	2155.58	-761.94	40°03'56.751"N	104°42'19.632"W	0.60	
10274.00	90.060	0.420	7245.50	2257.49	2249.57	-760.68	40°03'57.680"N	104°42'19.616"W	0.84	
10369.00	91.040	0.590	7244.59	2352.47	2344.56	-759.84	40°03'58.618"N	104°42'19.605"W	1.05	
10463.00	89.190	0.560	7244.40	2446.44	2438.55	-758.90	40°03'59.547"N	104°42'19.593"W	1.97	
10557.00	90.030	0.700	7245.04	2540.42	2532.54	-757.86	40°04'00.476"N	104°42'19.580"W	0.91	
10651.00	90.490	0.850	7244.61	2634.39	2626.53	-756.59	40°04'01.405"N	104°42'19.563"W	0.51	
10746.00	89.350	359.880	7244.75	2729.37	2721.53	-755.99	40°04'02.344"N	104°42'19.556"W	1.58	
10840.00	89.350	359.980	7245.81	2823.36	2815.52	-756.10	40°04'03.272"N	104°42'19.557"W	0.11	
10934.00	89.720	359.390	7246.58	2917.36	2909.52	-756.62	40°04'04.201"N	104°42'19.564"W	0.74	
11028.00	90.150	358.790	7246.68	3011.35	3003.50	-758.11	40°04'05.130"N	104°42'19.583"W	0.79	
11123.00	91.010	357.960	7245.72	3106.33	3098.46	-760.81	40°04'06.069"N	104°42'19.618"W	1.26	
11218.00	91.040	359.530	7244.02	3201.31	3193.42	-762.89	40°04'07.007"N	104°42'19.645"W	1.65	
11312.00	89.130	359.110	7243.88	3295.30	3287.41	-764.00	40°04'07.936"N	104°42'19.659"W	2.08	
11406.00	89.440	358.600	7245.05	3389.29	3381.38	-765.88	40°04'08.864"N	104°42'19.683"W	0.63	
11501.00	90.000	357.690	7245.52	3484.27	3476.33	-768.95	40°04'09.803"N	104°42'19.723"W	1.12	
11595.00	89.590	358.320	7245.86	3578.24	3570.27	-772.23	40°04'10.731"N	104°42'19.765"W	0.80	
11689.00	90.060	359.350	7246.14	3672.23	3664.25	-774.14	40°04'11.660"N	104°42'19.790"W	1.20	
11783.00	90.490	0.270	7245.69	3766.23	3758.25	-774.45	40°04'12.589"N	104°42'19.794"W	1.08	
11878.00	90.150	1.050	7245.16	3861.20	3853.24	-773.36	40°04'13.527"N	104°42'19.780"W	0.90	
11972.00	88.820	1.900	7246.01	3955.13	3947.20	-770.94	40°04'14.456"N	104°42'19.748"W	1.68	
12066.00	88.890	1.670	7247.88	4049.03	4041.13	-768.01	40°04'15.384"N	104°42'19.711"W	0.26	

REFERENCE WELLPATH IDENTIFICATION			
Operator	KERR-MCGEE OIL & GAS ONSHORE LP (LAMBERT STATE PLANE COORD)	Slot	SLOT#17 GOODIN 36N-A6HZ (413'FSL & 1585'FEL, SEC.07)
Area	COLORADO	Well	GOODIN 36N-A6HZ
Field	WELD COUNTY (KERR MCGEE)	Wellbore	GOODIN 36N-A6HZ AWB <101-13407>
Facility	SEC.07-T1N-R65W		

WELLPATH DATA (149 stations)										
MD [ft]	Inclination [°]	Azimuth [°]	TVD [ft]	Vert Sect [ft]	North [ft]	East [ft]	Latitude	Longitude	DLS [°/100ft]	Comments
12161.00	89.660	1.660	7249.09	4143.95	4136.09	-765.25	40°04'16.323"N	104°42'19.675"W	0.81	
12255.00	90.430	2.190	7249.01	4237.86	4230.03	-762.09	40°04'17.251"N	104°42'19.635"W	0.99	
12349.00	89.160	0.950	7249.35	4331.78	4323.99	-759.52	40°04'18.179"N	104°42'19.602"W	1.89	
12444.00	89.100	358.710	7250.79	4426.76	4418.97	-759.80	40°04'19.118"N	104°42'19.605"W	2.36	
12538.00	89.660	358.120	7251.81	4520.74	4512.93	-762.40	40°04'20.047"N	104°42'19.639"W	0.87	
12632.00	89.660	356.810	7252.37	4614.69	4606.84	-766.56	40°04'20.975"N	104°42'19.692"W	1.39	
12727.00	89.780	358.100	7252.83	4709.63	4701.74	-770.77	40°04'21.912"N	104°42'19.747"W	1.36	
12821.00	90.550	358.600	7252.56	4803.61	4795.70	-773.48	40°04'22.841"N	104°42'19.782"W	0.98	
12916.00	91.600	358.940	7250.78	4898.59	4890.66	-775.52	40°04'23.779"N	104°42'19.808"W	1.16	
13010.00	90.360	358.010	7249.17	4992.56	4984.61	-778.02	40°04'24.708"N	104°42'19.840"W	1.65	
13104.00	91.100	358.730	7247.97	5086.54	5078.56	-780.69	40°04'25.636"N	104°42'19.874"W	1.10	
13199.00	90.950	358.760	7246.27	5181.51	5173.52	-782.77	40°04'26.575"N	104°42'19.901"W	0.16	
13353.00	92.060	358.150	7242.23	5335.44	5327.41	-786.92	40°04'28.095"N	104°42'19.955"W	0.82	Last BHI MWD+IFR Surveys
13407.00	92.060	358.150	7240.29	5389.39	5381.35	-788.67	40°04'28.629"N	104°42'19.977"W	0.00	Projection to Bit

HOLE & CASING SECTIONS - Ref Wellbore: GOODIN 36N-A6HZ AWB <101-13407> Ref Wellpath: GOODIN 36N-A6HZ AWP									
String/Diameter	Start MD [ft]	End MD [ft]	Interval [ft]	Start TVD [ft]	End TVD [ft]	Start N/S [ft]	Start E/W [ft]	End N/S [ft]	End E/W [ft]
13.5in Open Hole	25.00	1604.00	1579.00	25.00	1603.94	0.00	0.00	0.24	-0.47
9.625in Casing Surface	25.00	1594.00	1569.00	25.00	1593.94	0.00	0.00	0.20	-0.53
8.75in Open Hole	1604.00	7827.00	6223.00	1603.94	7230.43	0.24	-0.47	-196.41	-736.91
7in Casing Intermediate	25.00	7817.00	7792.00	25.00	7230.12	0.00	0.00	-206.41	-736.72
6.125in Open Hole	7827.00	13407.00	5580.00	7230.43	7240.29	-196.41	-736.91	5381.35	-788.67

TARGETS								
Name	TVD [ft]	North [ft]	East [ft]	Grid East [US ft]	Grid North [US ft]	Latitude	Longitude	Shape
SEC.06-T1N-R65W SECTION LINES	-14.00	4.13	-2052.04	3221106.82	1265636.47	40°03'35.489"N	104°42'36.223"W	polygon
SEC.07-T1N-R65W SECTION LINES	0.00	0.00	0.00	3223158.73	1265650.78	40°03'35.449"N	104°42'09.832"W	polygon
GOODIN 36N-A6HZ BHL ON PLAT REV-1 (500'FSL & 2324'FEL, SEC.06)	7244.00	5382.07	-793.93	3222316.48	1271025.28	40°04'28.636"N	104°42'20.045"W	point
GOODIN 36N-A6HZ LANDBOX	7244.00	0.00	0.00	3223158.73	1265650.78	40°03'35.449"N	104°42'09.832"W	polygon



Actual Wellpath Report  
GOODIN 36N-A6HZ AWP  
Page 6 of 7



REFERENCE WELLPATH IDENTIFICATION			
Operator	KERR-MCGEE OIL & GAS ONSHORE LP (LAMBERT STATE PLANE COORD)	Slot	SLOT#17 GOODIN 36N-A6HZ (413'FSL & 1585'FEL, SEC.07)
Area	COLORADO	Well	GOODIN 36N-A6HZ
Field	WELD COUNTY (KERR MCGEE)	Wellbore	GOODIN 36N-A6HZ AWB <101-13407>
Facility	SEC.07-T1N-R65W		

WELLPATH COMPOSITION - Ref Wellbore: GOODIN 36N-A6HZ AWB <101-13407>      Ref Wellpath: GOODIN 36N-A6HZ AWP				
Start MD [ft]	End MD [ft]	Positional Uncertainty Model	Log Name/Comment	Wellbore
25.00	1559.00	ISCWSA MWD, Rev. 2 (Standard)	CATHEDRAL MWD SURVEYS <101-1559>	GOODIN 36N-A6HZ AWB <101-13407>
1559.00	7779.00	NaviTrak (MAGCORR,IFR)	BHI MWD+IFR SURVEYS 8 3/4" HOLE <1630-7779>	GOODIN 36N-A6HZ AWB <101-13407>
7779.00	13353.00	NaviTrak (MAGCORR,IFR)	BHI MWD+IFR SURVEYS 6 1/8" HOLE <7851-13353>	GOODIN 36N-A6HZ AWB <101-13407>
13353.00	13407.00	Blind Drilling (std)	Projection to bit	GOODIN 36N-A6HZ AWB <101-13407>



Actual Wellpath Report  
GOODIN 36N-A6HZ AWP  
Page 7 of 7



REFERENCE WELLPATH IDENTIFICATION			
Operator	KERR-MCGEE OIL & GAS ONSHORE LP (LAMBERT STATE PLANE COORD)	Slot	SLOT#17 GOODIN 36N-A6HZ (413'FSL & 1585'FEL, SEC.07)
Area	COLORADO	Well	GOODIN 36N-A6HZ
Field	WELD COUNTY (KERR MCGEE)	Wellbore	GOODIN 36N-A6HZ AWB <101-13407>
Facility	SEC.07-T1N-R65W		

WELLPATH COMMENTS				
MD [ft]	Inclination [°]	Azimuth [°]	TVD [ft]	Comment
25.00	0.000	65.600	25.00	Tie-On
101.00	0.200	65.600	101.00	Begin CATHEDRAL MWD Surveys
1559.00	0.600	356.700	1558.95	Tie-Into CATHEDRAL MWD Surveys
1630.00	0.640	100.140	1629.94	Begin BHI MWD+IFR Surveys
7817.00	88.091	358.882	7230.12	7" Casing Point
13353.00	92.060	358.150	7242.23	Last BHI MWD+IFR Surveys
13407.00	92.060	358.150	7240.29	Projection to Bit