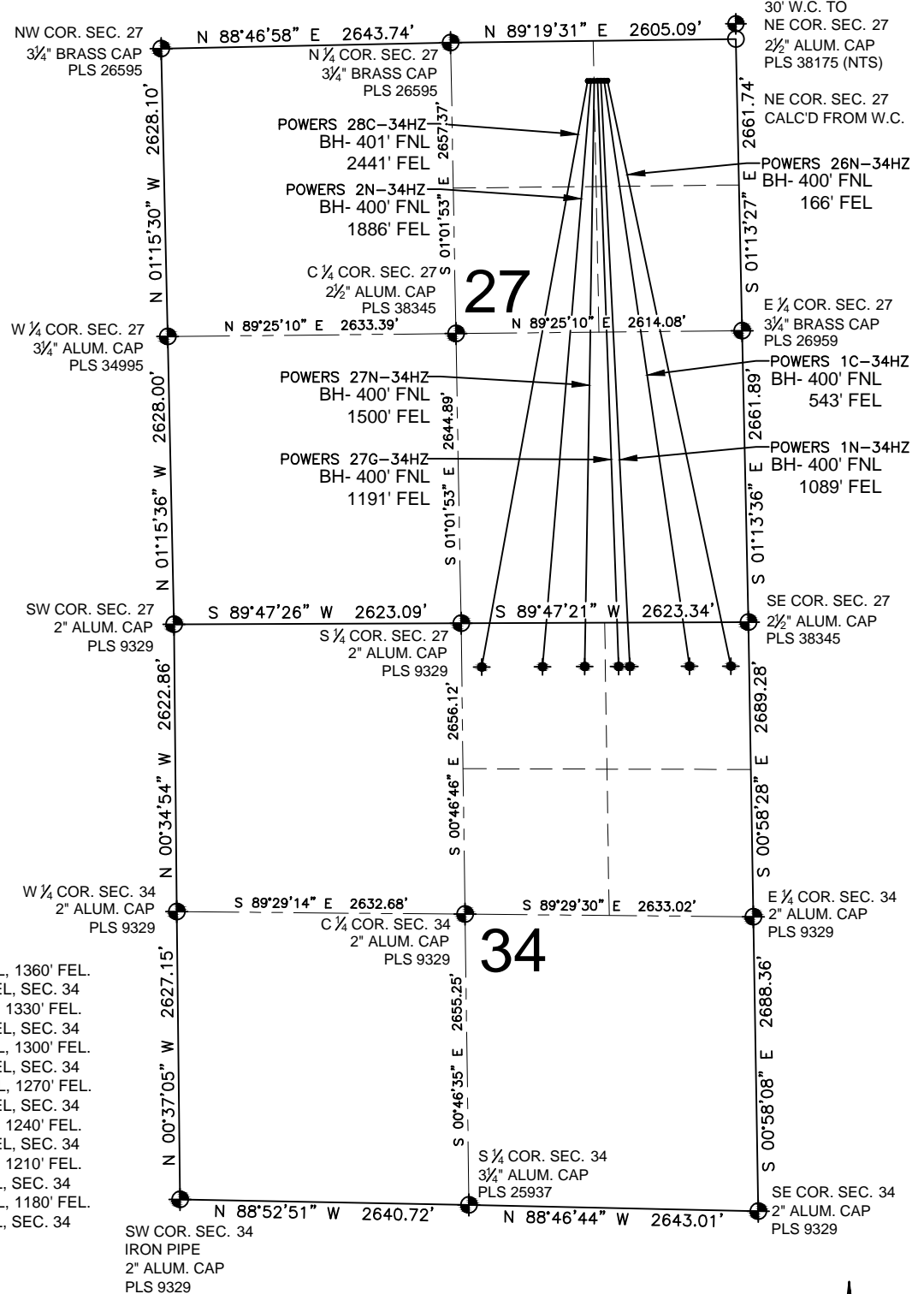


# POWERS 27G-34HZ MULTI-WELL PLAN

SECTION 27, TOWNSHIP 2 NORTH, RANGE 65 WEST, 6TH P.M.



## LEGEND

- = EXISTING MONUMENT
- = PROPOSED WELL
- ◆ = BOTTOM HOLE
- ◆ = EXISTING WELL
- BH = BOTTOM HOLE
- = CALCULATED POSITION

## NOTES:

POWERS 28C-34HZ TO BE AT 365' FNL, 1360' FEL.  
BOTTOM HOLE AT 401' FNL & 2441' FEL, SEC. 34  
POWERS 2N-34HZ TO BE AT 365' FNL, 1330' FEL.  
BOTTOM HOLE AT 400' FNL & 1886' FEL, SEC. 34  
POWERS 27N-34HZ TO BE AT 365' FNL, 1300' FEL.  
BOTTOM HOLE AT 400' FNL & 1500' FEL, SEC. 34  
POWERS 27G-34HZ TO BE AT 365' FNL, 1270' FEL.  
BOTTOM HOLE AT 400' FNL & 1191' FEL, SEC. 34  
POWERS 1N-34HZ TO BE AT 365' FNL, 1240' FEL.  
BOTTOM HOLE AT 400' FNL & 1089' FEL, SEC. 34  
POWERS 1C-34HZ TO BE AT 365' FNL, 1210' FEL.  
BOTTOM HOLE AT 400' FNL & 543' FEL, SEC. 34  
POWERS 26N-34HZ TO BE AT 365' FNL, 1180' FEL.  
BOTTOM HOLE AT 400' FNL & 166' FEL, SEC. 34

PREPARED BY:

**PFS**

Petroleum Field Services, LLC  
7535 Hilltop Circle  
Denver, CO 80221

KERR-MCGEE OIL & GAS ONSHORE LP

FIELD DATE:  
10-14-14

DRAWING DATE:  
03-07-15

SURFACE LOCATION:

NW 1/4, NE 1/4, SEC. 27, T2N, R65W, 6TH P.M.  
NE 1/4, NE 1/4, SEC. 27, T2N, R65W, 6TH P.M.  
WELD COUNTY, COLORADO

