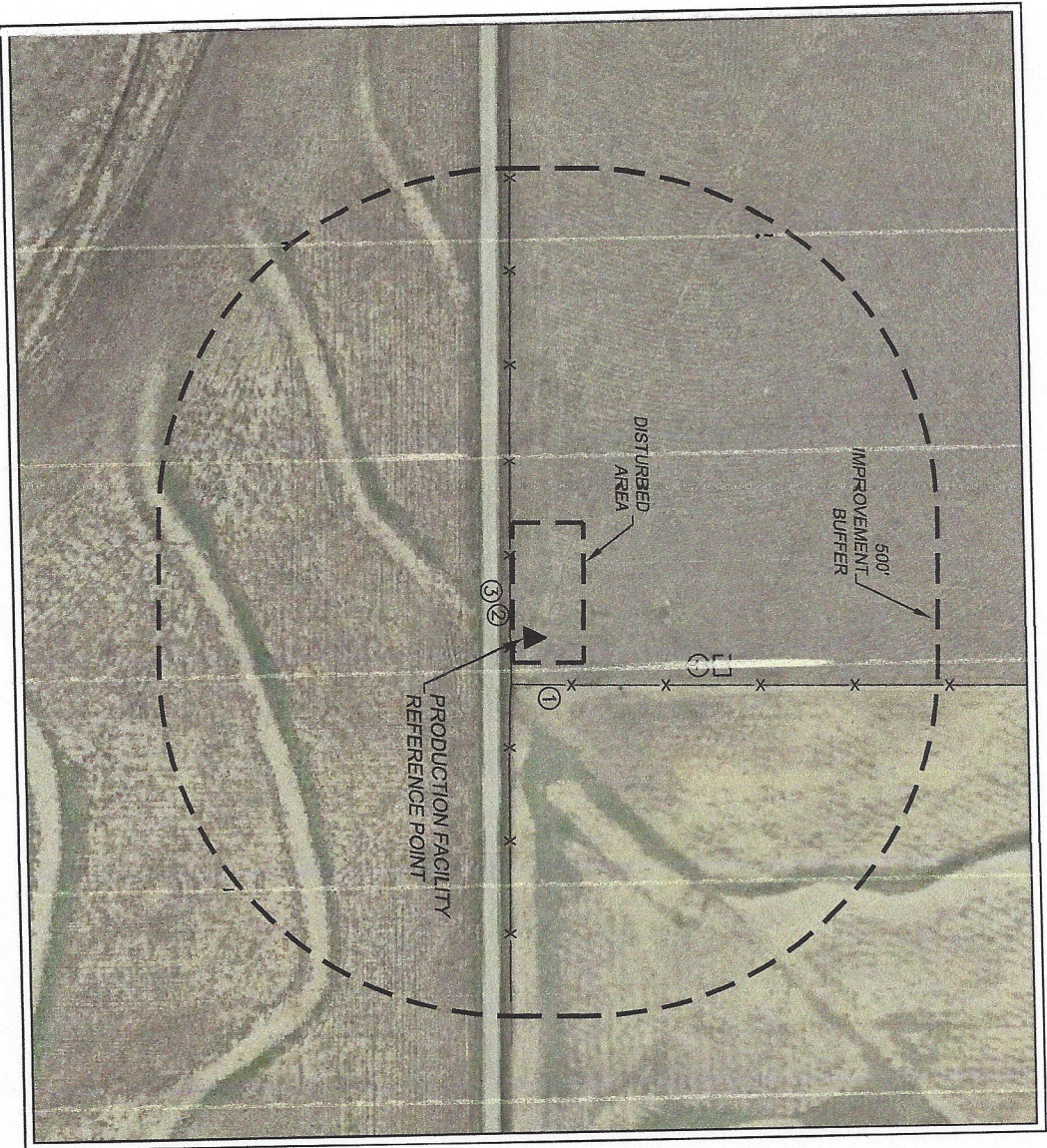


DALEY LAND SURVEYING, INC. PARKER, CO. 80134 303 953 9841
PRODUCTION FACILITY LOCATION DRAWING
 CALLAWAY 3-33

SECTION: 3
 TOWNSHIP: 13S
 RANGE: 58W



CULTURAL ITEMS:	
MEASURED FROM THE NEAREST EDGE OF PRODUCTION	
BUILDING:	4281' ± NE
BUILDING UNIT:	4505' ± SE
HIGH OCC. BLD. UNIT:	5280' ±
DES. OUTSIDE ACTIVITY AREA:	5280' ±
PUBLIC ROAD:	23' ± S
ABOVE GROUND UTILITY:	3093' ± N
RAILROAD:	5280' ±
PROPERTY LINE:	28' ± S

IMPROVEMENTS

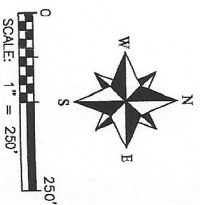
(MEASURED FROM NEAREST
 EDGE OF PRODUCTION)

1. WIRE FENCE: 29' ± E
2. WIRE FENCE: 3' ± S
3. COUNTY ROAD: 22' ± S
4. CONC. FOUNDATION: 185' ± N

MAD 83

PRODUCTION FACILITY LOCATION:

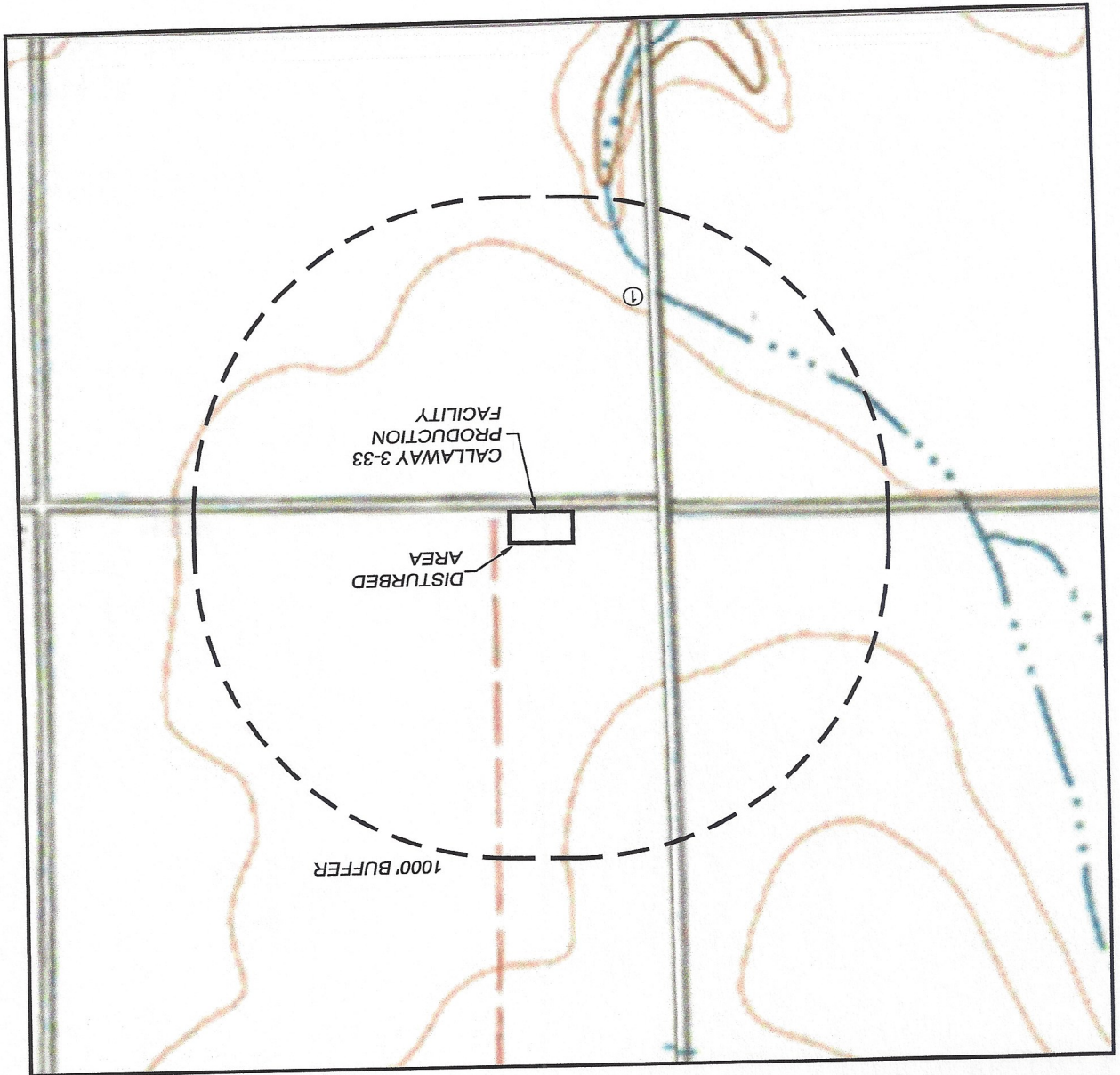
LATITUDE: N38.93981°
 LONGITUDE: W103.87382°
 ELEV: 5725'
 PDOP: 1.2
 QTR/QTR: SW4/SE4
 FOOTAGE: 55' FSL, 1511' FEL



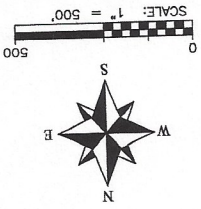
DALEY LAND SURVEYING, INC. PARKER, CO. 80134 303 953 9841

PRODUCTION FACILITY HYDROLOGY MAP
CALLAWAY 3-33

SECTION: 3
TOWNSHIP: 13S
RANGE: 58W



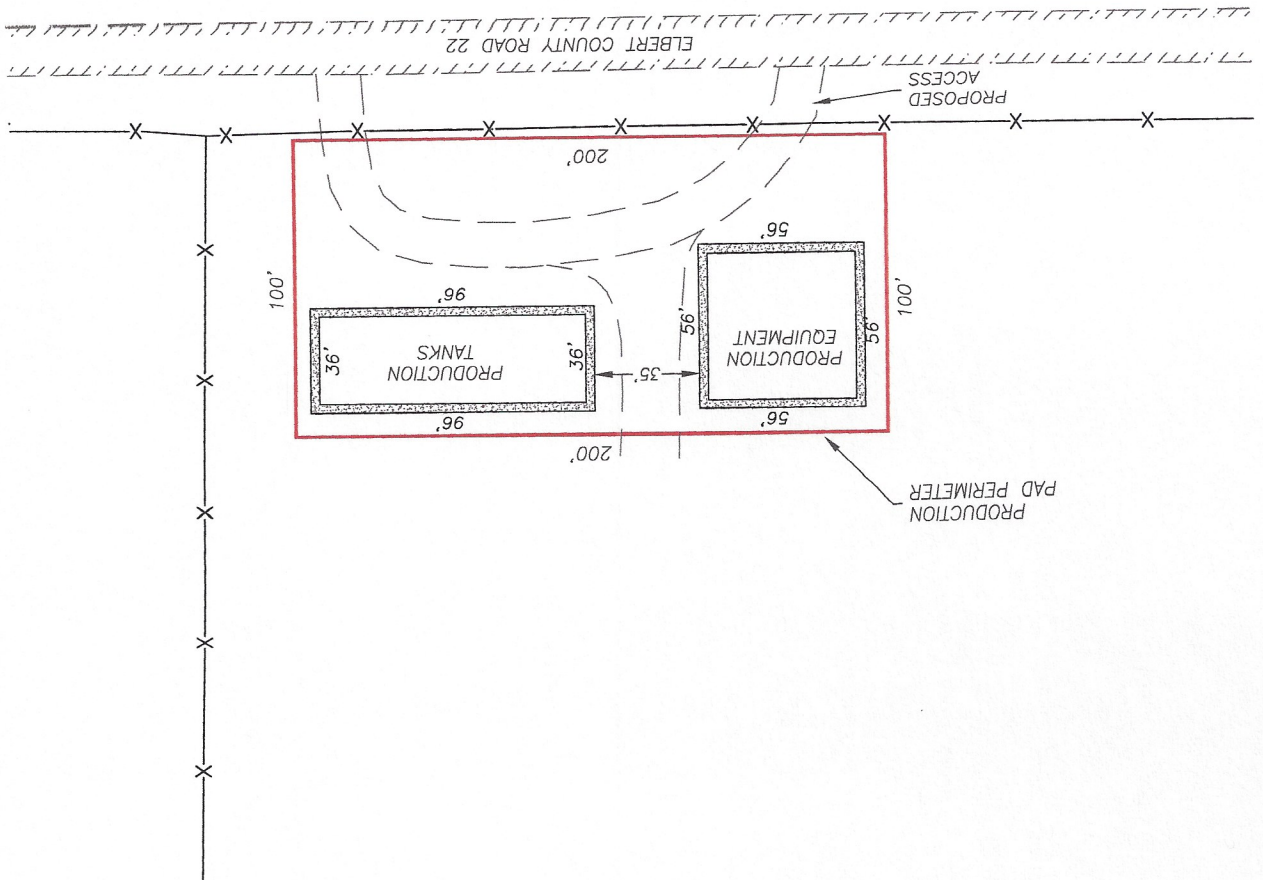
SURFACE WATER
(MEASURED FROM THE CLOSEST EDGE OF
DISTURBED AREA)
1. INTERMITTENT STREAM: 725' ± SW



DALEY LAND SURVEYING, INC. PARKER, CO. 80134 303 953 9841

PROPOSED PRODUCTION FACILITY LAYOUT CALLAWAY 3-33 PAD

SECTION: 3
TOWNSHIP: 13S
RANGE: 58W



OPERATOR: MUSTANG CREEK OPERATING LLC.
LOCATION: 55' FSL, 1151' FEL
EXISTING ELEVATION: 5725'
DISTURBANCE: 0.5 Ac.

