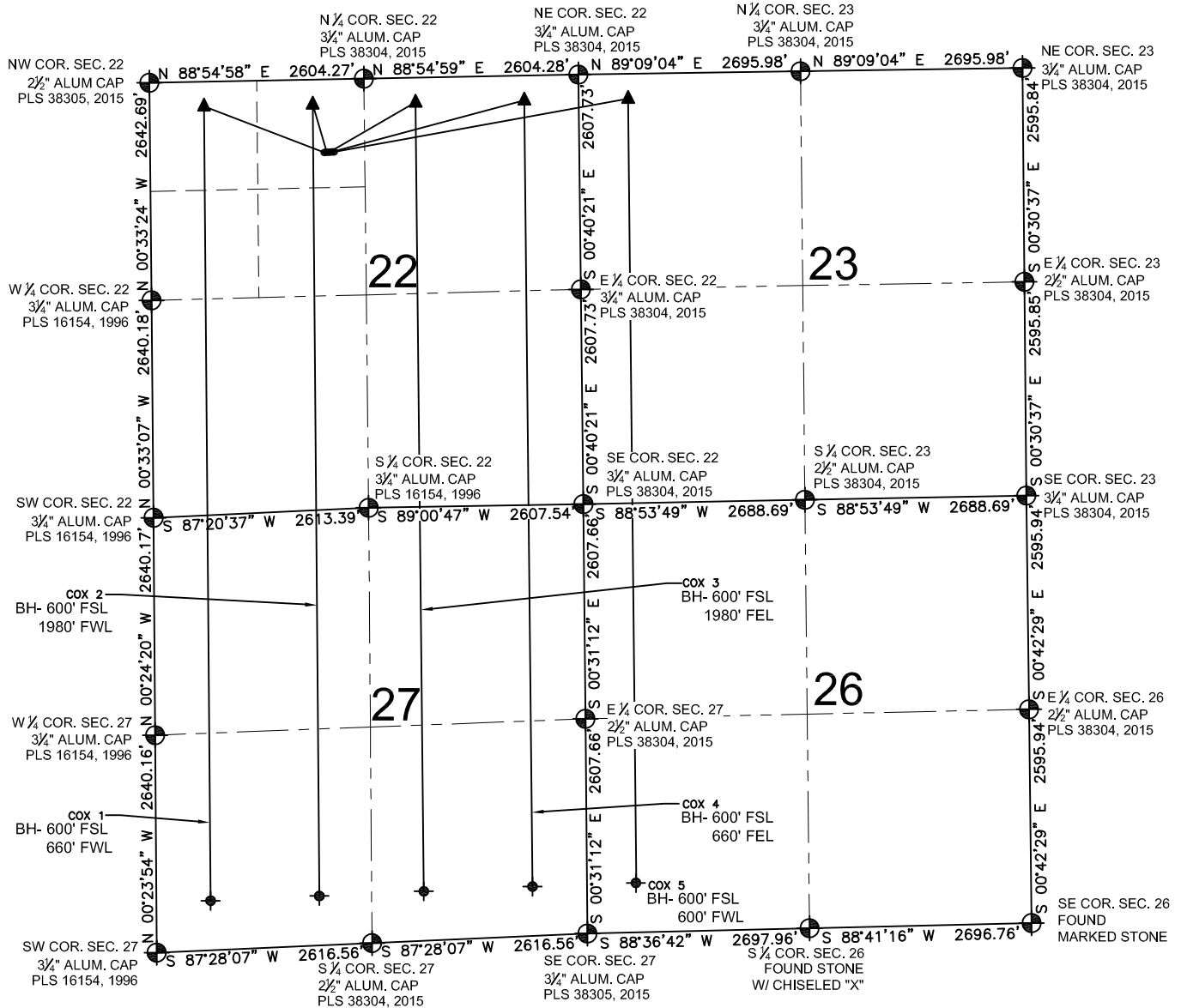


COX 22-B PAD MULTI-WELL PLAN



LEGEND

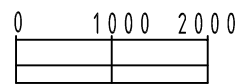
- = EXISTING MONUMENT
- = PROPOSED WELL
- ▲ = LANDING POINT
- ◆ = BOTTOM HOLE
- LP = LANDING POINT
- BH = BOTTOM HOLE

NOTES:

- THIS FIELD SURVEY CONFORMS TO THE MINIMUM STANDARDS SET BY THE C.O.G.C.C., RULE NO. 215
- BEARINGS AND DISTANCE SHOWN HEREON ARE GRID AND BASED ON THE COLORADO STATE PLANE COORDINATE SYSTEM, NAD 83/2011 BETWEEN MONUMENTS AS LABELED HEREON AND ELEVATIONS SHOWN ARE NAVD 88, AS DERIVED BY GPS OBSERVATIONS.
- GRID DISTANCES ARE SHOWN, AS MEASURED IN THE FIELD, WITH TIES TO WELLS MEASURED PERPENDICULAR TO SECTION LINES.

NOTES:

- COX 1 TO BE AT 887' FNL, 2114' FWL.
- BOTTOM HOLE AT 600' FSL & 660' FWL, SEC 27.
- COX 2 TO BE AT 886' FNL, 2144' FWL.
- BOTTOM HOLE AT 600' FSL & 1980' FWL, SEC 27.
- COX 3 TO BE AT 884' FNL, 2173' FWL.
- BOTTOM HOLE AT 600' FSL & 1980' FEL, SEC 27.
- COX 4 TO BE AT 883' FNL, 2203' FWL.
- BOTTOM HOLE AT 600' FSL & 660' FEL, SEC 27.
- COX 5 TO BE AT 882' FNL, 2233' FWL.
- BOTTOM HOLE AT 600' FSL & 600' FWL, SEC 26.



SCALE: 1"=2000'

PREPARED BY:



FIELD DATE:

05-05-15

DRAWING DATE:

06-30-15

BY:

TJN

CHECKED BY:

KAD

SITE NAME:

COX 22-B PAD

SURFACE LOCATION:

NE 1/4 NW 1/4, SEC. 22, T12N, R64W, 6TH P.M.
WELD COUNTY, COLORADO

PREPARED FOR:

