



Bill Barrett Corporation

Bill Barrett Corp.

Weld Co., CO

Sec.35-T5N-R62W

Anschutz State 5-62-35-4841BH2

Wellbore #1

Plan: Design #1

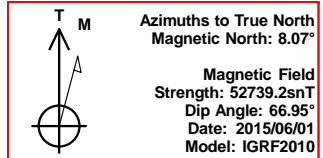
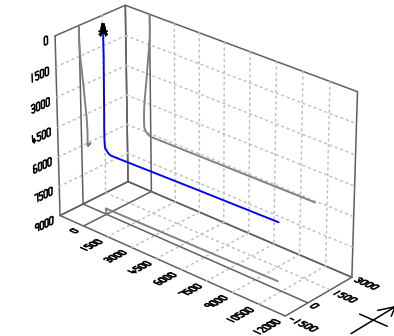
Standard Planning Report

01 June, 2015



Bill Barrett Corp.
Project: Weld Co., CO
Site: Sec.35-T5N-R62W
Well: Anschutz State 5-62-35-4841BH2
Wellbore: Wellbore #1
Design: Design #1
Lat: 40° 21' 12.262 N
Long: 104° 17' 54.532 W
Pad GL: 4580.00
KB: Well @ 4596.00usft

Archer



SECTION DETAILS

MD	Inc	Azi	TVD	+N/-S	+E/-W	Dleg	TFace	VSec	Annotation
0.00	0.00	0.00	0.00	0.00	0.00	0.00	0.00	0.00	
900.00	0.00	0.00	900.00	0.00	0.00	0.00	0.00	0.00	Start Build 2.00
1320.97	8.42	312.42	1319.45	20.82	-22.79	2.00	312.42	-22.44	Start 3464.98 hold at 1320.97 MD
4785.94	8.42	312.42	4747.09	363.03	-397.34	0.00	0.00	-391.13	Start Drop -2.00
5206.91	0.00	0.00	5166.54	383.85	-420.13	2.00	180.00	-413.57	Start 500.01 hold at 5206.91 MD
5706.92	0.00	0.00	5666.55	383.85	-420.13	0.00	0.00	-413.57	Start Build 12.00
6460.34	90.41	89.03	6144.00	392.00	60.69	12.00	89.03	67.32	Start 9761.36 hold at 6460.34 MD
16221.70	90.41	89.03	6074.00	557.50	9820.39	0.00	0.00	9828.42	TD at 16221.70

WELL DETAILS: Anschutz State 5-62-35-4841BH2

+N/-S	+E/-W	Northing	Ground Level: Easting	4580.00 Latitude	40° 21' 12.262 N	Longitude	Slot
0.00	0.00	1373855.055	3334855.231			104° 17' 54.532 W	

PROJECT DETAILS: Weld Co., CO

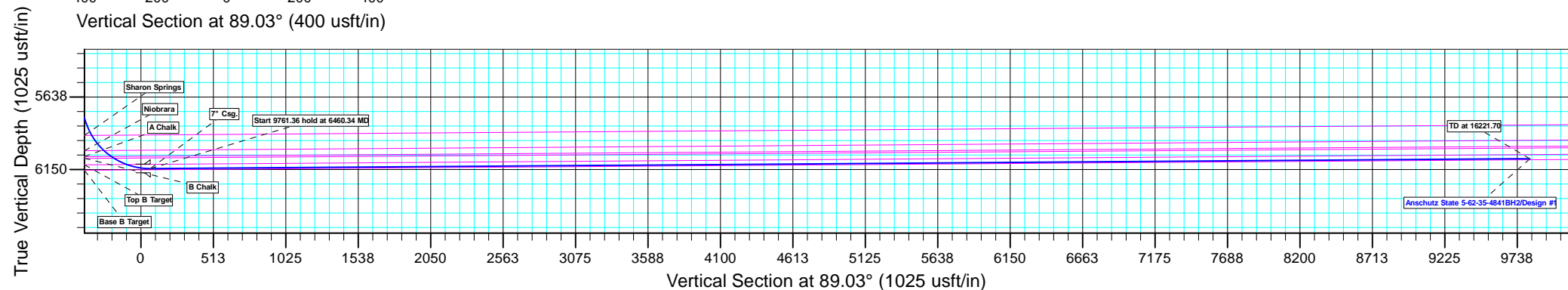
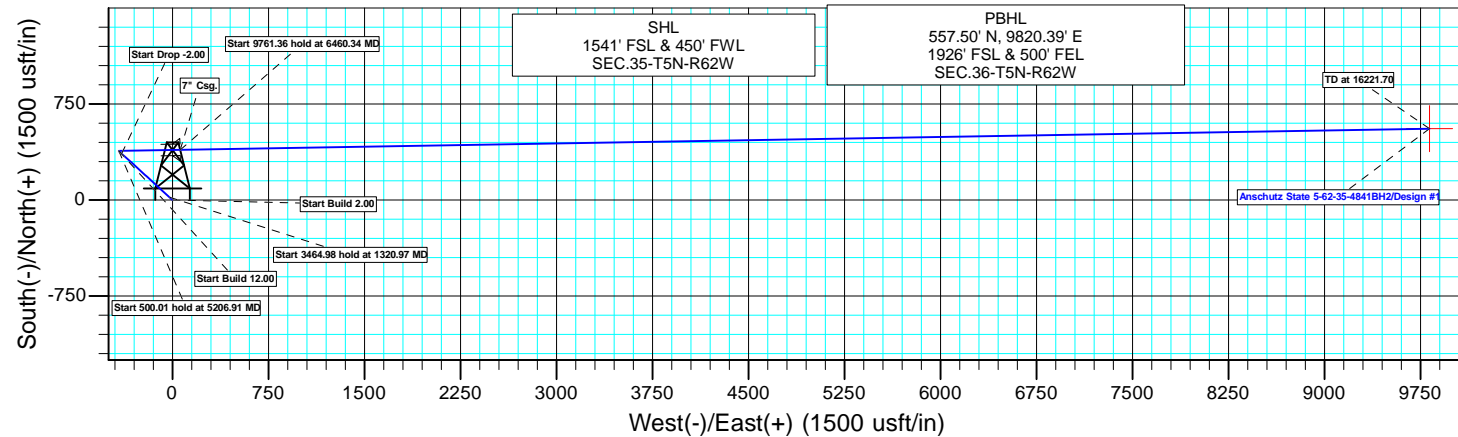
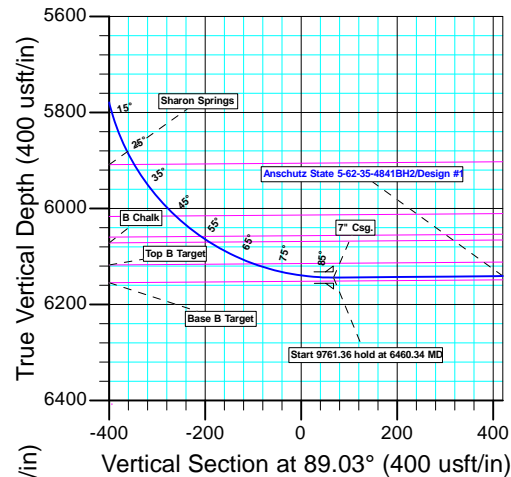
Geodetic System: US State Plane 1983
Datum: North American Datum 1983
Ellipsoid: GRS 1980
Zone: Colorado Northern Zone
System Datum: Mean Sea Level

CASING DETAILS

TVD	MD	Name
6144.00	6460.34	7" Csg.

WELLBORE TARGET DETAILS (LAT/LONG)

Name	TVD	+N/-S	+E/-W	Latitude	Longitude	Shape Point
Anschutz State 5-62-35-4841BH2 tgt	6074.00	557.50	9820.39	40° 21' 17.752 N	104° 15' 47.678 W	



Plan: Design #1 (Anschutz State 5-62-35-4841BH2/Wellbore #1)

Created By: Ricky Osburn Date: 14:18, June 01 2015

Database:	EDMDBBW	Local Co-ordinate Reference:	Well Anschutz State 5-62-35-4841BH2
Company:	Bill Barrett Corp.	TVD Reference:	Well @ 4596.00usft
Project:	Weld Co., CO	MD Reference:	Well @ 4596.00usft
Site:	Sec.35-T5N-R62W	North Reference:	True
Well:	Anschutz State 5-62-35-4841BH2	Survey Calculation Method:	Minimum Curvature
Wellbore:	Wellbore #1		
Design:	Design #1		

Project	Weld Co., CO		
Map System:	US State Plane 1983	System Datum:	Mean Sea Level
Geo Datum:	North American Datum 1983		
Map Zone:	Colorado Northern Zone		

Site		Sec.35-T5N-R62W			
Site Position:		Northing:	1,375,286.395 usft	Latitude:	40° 21' 26.420 N
From:	Lat/Long	Easting:	3,334,739.959 usft	Longitude:	104° 17' 55.770 W
Position Uncertainty:	0.00 usft	Slot Radius:	13-3/16 "	Grid Convergence:	0.78 °

Well	Anschutz State 5-62-35-4841BH2					
Well Position	+N/-S	-1,432.77 usft	Northing:	1,373,855.055 usft	Latitude:	40° 21' 12.262 N
	+E/-W	95.87 usft	Easting:	3,334,855.231 usft	Longitude:	104° 17' 54.532 W
Position Uncertainty		0.00 usft	Wellhead Elevation:	0.00 usft	Ground Level:	4,580.00 usft

Wellbore	Wellbore #1				
Magnetics	Model Name	Sample Date	Declination (°)	Dip Angle (°)	Field Strength (nT)
	IGRF2010	2015/06/01	8.07	66.95	52,739

Design	Design #1			
Audit Notes:				
Version:	Phase:	PLAN	Tie On Depth:	0.00
Vertical Section:	Depth From (TVD) (usft)	+N/-S (usft)	+E/-W (usft)	Direction (°)
	0.00	0.00	0.00	89.03

Plan Sections										
Measured Depth (usft)	Inclination (°)	Azimuth (°)	Vertical Depth (usft)	+N/-S (usft)	+E/-W (usft)	Dogleg Rate (°/100usft)	Build Rate (°/100usft)	Turn Rate (°/100usft)	TFO (°)	Target
0.00	0.00	0.00	0.00	0.00	0.00	0.00	0.00	0.00	0.00	
900.00	0.00	0.00	900.00	0.00	0.00	0.00	0.00	0.00	0.00	
1,320.97	8.42	312.42	1,319.45	20.82	-22.79	2.00	2.00	0.00	312.42	
4,785.94	8.42	312.42	4,747.09	363.03	-397.34	0.00	0.00	0.00	0.00	
5,206.91	0.00	0.00	5,166.54	383.85	-420.13	2.00	-2.00	0.00	180.00	
5,706.92	0.00	0.00	5,666.55	383.85	-420.13	0.00	0.00	0.00	0.00	
6,460.34	90.41	89.03	6,144.00	392.00	60.69	12.00	12.00	0.00	89.03	Anschutz State 5-62-35-4841BH2
16,221.70	90.41	89.03	6,074.00	557.50	9,820.39	0.00	0.00	0.00	0.00	Anschutz State 5-62-35-4841BH2

Database:	EDMDBBW	Local Co-ordinate Reference:	Well Anschutz State 5-62-35-4841BH2
Company:	Bill Barrett Corp.	TVD Reference:	Well @ 4596.00usft
Project:	Weld Co., CO	MD Reference:	Well @ 4596.00usft
Site:	Sec.35-T5N-R62W	North Reference:	True
Well:	Anschutz State 5-62-35-4841BH2	Survey Calculation Method:	Minimum Curvature
Wellbore:	Wellbore #1		
Design:	Design #1		

Planned Survey									
Measured Depth (usft)	Inclination (°)	Azimuth (°)	Vertical Depth (usft)	+N/-S (usft)	+E/-W (usft)	Vertical Section (usft)	Dogleg Rate (°/100usft)	Build Rate (°/100usft)	Turn Rate (°/100usft)
0.00	0.00	0.00	0.00	0.00	0.00	0.00	0.00	0.00	0.00
Sussex									
39.68	0.00	0.00	39.68	0.00	0.00	0.00	0.00	0.00	0.00
100.00	0.00	0.00	100.00	0.00	0.00	0.00	0.00	0.00	0.00
200.00	0.00	0.00	200.00	0.00	0.00	0.00	0.00	0.00	0.00
300.00	0.00	0.00	300.00	0.00	0.00	0.00	0.00	0.00	0.00
400.00	0.00	0.00	400.00	0.00	0.00	0.00	0.00	0.00	0.00
500.00	0.00	0.00	500.00	0.00	0.00	0.00	0.00	0.00	0.00
600.00	0.00	0.00	600.00	0.00	0.00	0.00	0.00	0.00	0.00
700.00	0.00	0.00	700.00	0.00	0.00	0.00	0.00	0.00	0.00
800.00	0.00	0.00	800.00	0.00	0.00	0.00	0.00	0.00	0.00
Start Build 2.00									
900.00	0.00	0.00	900.00	0.00	0.00	0.00	0.00	0.00	0.00
1,000.00	2.00	312.42	999.98	1.18	-1.29	-1.27	2.00	2.00	0.00
1,100.00	4.00	312.42	1,099.84	4.71	-5.15	-5.07	2.00	2.00	0.00
1,200.00	6.00	312.42	1,199.45	10.59	-11.59	-11.41	2.00	2.00	0.00
1,300.00	8.00	312.42	1,298.70	18.81	-20.58	-20.26	2.00	2.00	0.00
Start 3464.98 hold at 1320.97 MD									
1,320.97	8.42	312.42	1,319.45	20.82	-22.79	-22.44	2.00	2.00	0.00
1,400.00	8.42	312.42	1,397.63	28.63	-31.34	-30.85	0.00	0.00	0.00
1,500.00	8.42	312.42	1,496.56	38.51	-42.15	-41.49	0.00	0.00	0.00
1,600.00	8.42	312.42	1,595.48	48.38	-52.95	-52.13	0.00	0.00	0.00
1,700.00	8.42	312.42	1,694.40	58.26	-63.76	-62.77	0.00	0.00	0.00
1,800.00	8.42	312.42	1,793.32	68.13	-74.57	-73.41	0.00	0.00	0.00
1,900.00	8.42	312.42	1,892.25	78.01	-85.38	-84.05	0.00	0.00	0.00
2,000.00	8.42	312.42	1,991.17	87.89	-96.19	-94.69	0.00	0.00	0.00
2,100.00	8.42	312.42	2,090.09	97.76	-107.00	-105.33	0.00	0.00	0.00
2,200.00	8.42	312.42	2,189.01	107.64	-117.81	-115.97	0.00	0.00	0.00
2,300.00	8.42	312.42	2,287.94	117.51	-128.62	-126.61	0.00	0.00	0.00
2,400.00	8.42	312.42	2,386.86	127.39	-139.43	-137.25	0.00	0.00	0.00
2,500.00	8.42	312.42	2,485.78	137.27	-150.24	-147.89	0.00	0.00	0.00
2,600.00	8.42	312.42	2,584.70	147.14	-161.05	-158.54	0.00	0.00	0.00
2,700.00	8.42	312.42	2,683.62	157.02	-171.86	-169.18	0.00	0.00	0.00
2,800.00	8.42	312.42	2,782.55	166.89	-182.67	-179.82	0.00	0.00	0.00
2,900.00	8.42	312.42	2,881.47	176.77	-193.48	-190.46	0.00	0.00	0.00
3,000.00	8.42	312.42	2,980.39	186.65	-204.29	-201.10	0.00	0.00	0.00
3,100.00	8.42	312.42	3,079.31	196.52	-215.10	-211.74	0.00	0.00	0.00
3,200.00	8.42	312.42	3,178.24	206.40	-225.91	-222.38	0.00	0.00	0.00
3,300.00	8.42	312.42	3,277.16	216.27	-236.72	-233.02	0.00	0.00	0.00
3,400.00	8.42	312.42	3,376.08	226.15	-247.52	-243.66	0.00	0.00	0.00
3,500.00	8.42	312.42	3,475.00	236.03	-258.33	-254.30	0.00	0.00	0.00
3,600.00	8.42	312.42	3,573.93	245.90	-269.14	-264.94	0.00	0.00	0.00
3,700.00	8.42	312.42	3,672.85	255.78	-279.95	-275.58	0.00	0.00	0.00
3,800.00	8.42	312.42	3,771.77	265.65	-290.76	-286.22	0.00	0.00	0.00
3,900.00	8.42	312.42	3,870.69	275.53	-301.57	-296.86	0.00	0.00	0.00
4,000.00	8.42	312.42	3,969.61	285.41	-312.38	-307.50	0.00	0.00	0.00
4,100.00	8.42	312.42	4,068.54	295.28	-323.19	-318.15	0.00	0.00	0.00
4,200.00	8.42	312.42	4,167.46	305.16	-334.00	-328.79	0.00	0.00	0.00
4,300.00	8.42	312.42	4,266.38	315.03	-344.81	-339.43	0.00	0.00	0.00
4,400.00	8.42	312.42	4,365.30	324.91	-355.62	-350.07	0.00	0.00	0.00
4,500.00	8.42	312.42	4,464.23	334.79	-366.43	-360.71	0.00	0.00	0.00
4,600.00	8.42	312.42	4,563.15	344.66	-377.24	-371.35	0.00	0.00	0.00
4,700.00	8.42	312.42	4,662.07	354.54	-388.05	-381.99	0.00	0.00	0.00

Database:	EDMDBBW	Local Co-ordinate Reference:	Well Anschutz State 5-62-35-4841BH2
Company:	Bill Barrett Corp.	TVD Reference:	Well @ 4596.00usft
Project:	Weld Co., CO	MD Reference:	Well @ 4596.00usft
Site:	Sec.35-T5N-R62W	North Reference:	True
Well:	Anschutz State 5-62-35-4841BH2	Survey Calculation Method:	Minimum Curvature
Wellbore:	Wellbore #1		
Design:	Design #1		

Planned Survey									
Measured Depth (usft)	Inclination (°)	Azimuth (°)	Vertical Depth (usft)	+N/-S (usft)	+E/-W (usft)	Vertical Section (usft)	Dogleg Rate (°/100usft)	Build Rate (°/100usft)	Turn Rate (°/100usft)
Start Drop -2.00									
4,785.94	8.42	312.42	4,747.09	363.03	-397.34	-391.13	0.00	0.00	0.00
4,800.00	8.14	312.42	4,761.00	364.39	-398.83	-392.61	2.00	-2.00	0.00
Shannon									
4,818.00	7.78	312.42	4,778.82	366.07	-400.67	-394.42	2.00	-2.00	0.00
4,900.00	6.14	312.42	4,860.22	372.77	-408.00	-401.64	2.00	-2.00	0.00
5,000.00	4.14	312.42	4,959.81	378.81	-414.62	-408.14	2.00	-2.00	0.00
5,100.00	2.14	312.42	5,059.66	382.50	-418.66	-412.12	2.00	-2.00	0.00
Start 500.01 hold at 5206.91 MD									
5,206.91	0.00	0.00	5,166.54	383.85	-420.13	-413.57	2.00	-2.00	0.00
5,300.00	0.00	0.00	5,259.63	383.85	-420.13	-413.57	0.00	0.00	0.00
5,400.00	0.00	0.00	5,359.63	383.85	-420.13	-413.57	0.00	0.00	0.00
5,500.00	0.00	0.00	5,459.63	383.85	-420.13	-413.57	0.00	0.00	0.00
5,600.00	0.00	0.00	5,559.63	383.85	-420.13	-413.57	0.00	0.00	0.00
Start Build 12.00									
5,706.92	0.00	0.00	5,666.55	383.85	-420.13	-413.57	0.00	0.00	0.00
5,725.00	2.17	89.03	5,684.63	383.86	-419.79	-413.23	12.00	12.00	0.00
5,750.00	5.17	89.03	5,709.57	383.88	-418.19	-411.63	12.00	12.00	0.00
5,775.00	8.17	89.03	5,734.40	383.93	-415.29	-408.73	12.00	12.00	0.00
5,800.00	11.17	89.03	5,759.04	384.00	-411.09	-404.53	12.00	12.00	0.00
5,825.00	14.17	89.03	5,783.43	384.10	-405.61	-399.04	12.00	12.00	0.00
5,850.00	17.17	89.03	5,807.50	384.21	-398.85	-392.29	12.00	12.00	0.00
5,875.00	20.17	89.03	5,831.18	384.35	-390.85	-384.29	12.00	12.00	0.00
5,900.00	23.17	89.03	5,854.41	384.50	-381.62	-375.06	12.00	12.00	0.00
5,925.00	26.17	89.03	5,877.13	384.68	-371.19	-364.63	12.00	12.00	0.00
5,950.00	29.17	89.03	5,899.27	384.88	-359.59	-353.02	12.00	12.00	0.00
Sharon Springs									
5,960.63	30.45	89.03	5,908.49	384.97	-354.30	-347.74	12.00	12.00	0.00
5,975.00	32.17	89.03	5,920.77	385.09	-346.84	-340.27	12.00	12.00	0.00
6,000.00	35.17	89.03	5,941.57	385.33	-332.98	-326.41	12.00	12.00	0.00
6,025.00	38.17	89.03	5,961.62	385.58	-318.05	-311.48	12.00	12.00	0.00
6,050.00	41.17	89.03	5,980.86	385.85	-302.10	-295.52	12.00	12.00	0.00
6,075.00	44.17	89.03	5,999.24	386.14	-285.16	-278.58	12.00	12.00	0.00
Niobrara									
6,098.77	47.02	89.03	6,015.87	386.43	-268.18	-261.60	12.00	12.00	0.00
6,100.00	47.17	89.03	6,016.71	386.44	-267.28	-260.70	12.00	12.00	0.00
6,125.00	50.17	89.03	6,033.22	386.76	-248.51	-241.93	12.00	12.00	0.00
6,150.00	53.17	89.03	6,048.72	387.09	-228.91	-222.32	12.00	12.00	0.00
A Chalk									
6,166.70	55.17	89.03	6,058.49	387.32	-215.37	-208.78	12.00	12.00	0.00
6,175.00	56.17	89.03	6,063.18	387.44	-208.52	-201.93	12.00	12.00	0.00
B Chalk									
6,188.19	57.75	89.03	6,070.37	387.63	-197.46	-190.87	12.00	12.00	0.00
6,200.00	59.17	89.03	6,076.54	387.80	-187.40	-180.81	12.00	12.00	0.00
6,225.00	62.17	89.03	6,088.79	388.17	-165.61	-159.01	12.00	12.00	0.00
6,250.00	65.17	89.03	6,099.88	388.55	-143.21	-136.61	12.00	12.00	0.00
6,275.00	68.17	89.03	6,109.78	388.94	-120.26	-113.66	12.00	12.00	0.00
Top B Target									
6,291.67	70.17	89.03	6,115.70	389.20	-104.68	-98.08	12.00	12.00	0.00
6,300.00	71.17	89.03	6,118.46	389.33	-96.82	-90.22	12.00	12.00	0.00
6,325.00	74.17	89.03	6,125.91	389.74	-72.96	-66.35	12.00	12.00	0.00
6,350.00	77.17	89.03	6,132.09	390.15	-48.75	-42.13	12.00	12.00	0.00
6,375.00	80.17	89.03	6,137.00	390.56	-24.24	-17.62	12.00	12.00	0.00

Database:	EDMDBBW	Local Co-ordinate Reference:	Well Anschutz State 5-62-35-4841BH2
Company:	Bill Barrett Corp.	TVD Reference:	Well @ 4596.00usft
Project:	Weld Co., CO	MD Reference:	Well @ 4596.00usft
Site:	Sec.35-T5N-R62W	North Reference:	True
Well:	Anschutz State 5-62-35-4841BH2	Survey Calculation Method:	Minimum Curvature
Wellbore:	Wellbore #1		
Design:	Design #1		

Planned Survey									
Measured Depth (usft)	Inclination (°)	Azimuth (°)	Vertical Depth (usft)	+N/-S (usft)	+E/-W (usft)	Vertical Section (usft)	Dogleg Rate (°/100usft)	Build Rate (°/100usft)	Turn Rate (°/100usft)
6,400.00	83.17	89.03	6,140.63	390.98	0.49	7.11	12.00	12.00	0.00
6,425.00	86.17	89.03	6,142.95	391.40	25.38	32.00	12.00	12.00	0.00
6,450.00	89.17	89.03	6,143.96	391.83	50.35	56.97	12.00	12.00	0.00
Start 9761.36 hold at 6460.34 MD - 7" Csg.									
6,460.34	90.41	89.03	6,144.00	392.00	60.69	67.31	12.00	12.00	0.00
6,500.00	90.41	89.03	6,143.72	392.68	100.34	106.97	0.00	0.00	0.00
6,600.00	90.41	89.03	6,143.00	394.37	200.32	206.97	0.00	0.00	0.00
6,700.00	90.41	89.03	6,142.28	396.07	300.31	306.97	0.00	0.00	0.00
6,800.00	90.41	89.03	6,141.57	397.76	400.29	406.97	0.00	0.00	0.00
6,900.00	90.41	89.03	6,140.85	399.46	500.27	506.96	0.00	0.00	0.00
7,000.00	90.41	89.03	6,140.13	401.15	600.26	606.96	0.00	0.00	0.00
7,100.00	90.41	89.03	6,139.42	402.85	700.24	706.96	0.00	0.00	0.00
7,200.00	90.41	89.03	6,138.70	404.54	800.22	806.96	0.00	0.00	0.00
7,300.00	90.41	89.03	6,137.98	406.24	900.20	906.95	0.00	0.00	0.00
7,400.00	90.41	89.03	6,137.26	407.93	1,000.19	1,006.95	0.00	0.00	0.00
7,500.00	90.41	89.03	6,136.55	409.63	1,100.17	1,106.95	0.00	0.00	0.00
7,600.00	90.41	89.03	6,135.83	411.33	1,200.15	1,206.95	0.00	0.00	0.00
7,700.00	90.41	89.03	6,135.11	413.02	1,300.14	1,306.94	0.00	0.00	0.00
7,800.00	90.41	89.03	6,134.40	414.72	1,400.12	1,406.94	0.00	0.00	0.00
7,900.00	90.41	89.03	6,133.68	416.41	1,500.10	1,506.94	0.00	0.00	0.00
8,000.00	90.41	89.03	6,132.96	418.11	1,600.09	1,606.93	0.00	0.00	0.00
8,100.00	90.41	89.03	6,132.24	419.80	1,700.07	1,706.93	0.00	0.00	0.00
8,200.00	90.41	89.03	6,131.53	421.50	1,800.05	1,806.93	0.00	0.00	0.00
8,300.00	90.41	89.03	6,130.81	423.19	1,900.04	1,906.93	0.00	0.00	0.00
8,400.00	90.41	89.03	6,130.09	424.89	2,000.02	2,006.92	0.00	0.00	0.00
8,500.00	90.41	89.03	6,129.38	426.58	2,100.00	2,106.92	0.00	0.00	0.00
8,600.00	90.41	89.03	6,128.66	428.28	2,199.98	2,206.92	0.00	0.00	0.00
8,700.00	90.41	89.03	6,127.94	429.98	2,299.97	2,306.92	0.00	0.00	0.00
8,800.00	90.41	89.03	6,127.22	431.67	2,399.95	2,406.91	0.00	0.00	0.00
8,900.00	90.41	89.03	6,126.51	433.37	2,499.93	2,506.91	0.00	0.00	0.00
9,000.00	90.41	89.03	6,125.79	435.06	2,599.92	2,606.91	0.00	0.00	0.00
9,100.00	90.41	89.03	6,125.07	436.76	2,699.90	2,706.91	0.00	0.00	0.00
9,200.00	90.41	89.03	6,124.36	438.45	2,799.88	2,806.90	0.00	0.00	0.00
9,300.00	90.41	89.03	6,123.64	440.15	2,899.87	2,906.90	0.00	0.00	0.00
9,400.00	90.41	89.03	6,122.92	441.84	2,999.85	3,006.90	0.00	0.00	0.00
9,500.00	90.41	89.03	6,122.20	443.54	3,099.83	3,106.90	0.00	0.00	0.00
9,600.00	90.41	89.03	6,121.49	445.23	3,199.81	3,206.89	0.00	0.00	0.00
9,700.00	90.41	89.03	6,120.77	446.93	3,299.80	3,306.89	0.00	0.00	0.00
9,800.00	90.41	89.03	6,120.05	448.63	3,399.78	3,406.89	0.00	0.00	0.00
9,900.00	90.41	89.03	6,119.34	450.32	3,499.76	3,506.89	0.00	0.00	0.00
10,000.00	90.41	89.03	6,118.62	452.02	3,599.75	3,606.88	0.00	0.00	0.00
10,100.00	90.41	89.03	6,117.90	453.71	3,699.73	3,706.88	0.00	0.00	0.00
10,200.00	90.41	89.03	6,117.18	455.41	3,799.71	3,806.88	0.00	0.00	0.00
10,300.00	90.41	89.03	6,116.47	457.10	3,899.70	3,906.88	0.00	0.00	0.00
10,400.00	90.41	89.03	6,115.75	458.80	3,999.68	4,006.87	0.00	0.00	0.00
10,500.00	90.41	89.03	6,115.03	460.49	4,099.66	4,106.87	0.00	0.00	0.00
10,600.00	90.41	89.03	6,114.32	462.19	4,199.65	4,206.87	0.00	0.00	0.00
10,700.00	90.41	89.03	6,113.60	463.88	4,299.63	4,306.87	0.00	0.00	0.00
10,800.00	90.41	89.03	6,112.88	465.58	4,399.61	4,406.86	0.00	0.00	0.00
10,900.00	90.41	89.03	6,112.16	467.28	4,499.59	4,506.86	0.00	0.00	0.00
11,000.00	90.41	89.03	6,111.45	468.97	4,599.58	4,606.86	0.00	0.00	0.00
11,100.00	90.41	89.03	6,110.73	470.67	4,699.56	4,706.86	0.00	0.00	0.00
11,200.00	90.41	89.03	6,110.01	472.36	4,799.54	4,806.85	0.00	0.00	0.00

Database:	EDMDBBW	Local Co-ordinate Reference:	Well Anschutz State 5-62-35-4841BH2
Company:	Bill Barrett Corp.	TVD Reference:	Well @ 4596.00usft
Project:	Weld Co., CO	MD Reference:	Well @ 4596.00usft
Site:	Sec.35-T5N-R62W	North Reference:	True
Well:	Anschutz State 5-62-35-4841BH2	Survey Calculation Method:	Minimum Curvature
Wellbore:	Wellbore #1		
Design:	Design #1		

Planned Survey									
Measured Depth (usft)	Inclination (°)	Azimuth (°)	Vertical Depth (usft)	+N/-S (usft)	+E/-W (usft)	Vertical Section (usft)	Dogleg Rate (°/100usft)	Build Rate (°/100usft)	Turn Rate (°/100usft)
11,300.00	90.41	89.03	6,109.29	474.06	4,899.53	4,906.85	0.00	0.00	0.00
11,400.00	90.41	89.03	6,108.58	475.75	4,999.51	5,006.85	0.00	0.00	0.00
11,500.00	90.41	89.03	6,107.86	477.45	5,099.49	5,106.84	0.00	0.00	0.00
11,600.00	90.41	89.03	6,107.14	479.14	5,199.48	5,206.84	0.00	0.00	0.00
11,700.00	90.41	89.03	6,106.43	480.84	5,299.46	5,306.84	0.00	0.00	0.00
11,800.00	90.41	89.03	6,105.71	482.53	5,399.44	5,406.84	0.00	0.00	0.00
11,900.00	90.41	89.03	6,104.99	484.23	5,499.43	5,506.83	0.00	0.00	0.00
12,000.00	90.41	89.03	6,104.27	485.93	5,599.41	5,606.83	0.00	0.00	0.00
12,100.00	90.41	89.03	6,103.56	487.62	5,699.39	5,706.83	0.00	0.00	0.00
12,200.00	90.41	89.03	6,102.84	489.32	5,799.37	5,806.83	0.00	0.00	0.00
12,300.00	90.41	89.03	6,102.12	491.01	5,899.36	5,906.82	0.00	0.00	0.00
12,400.00	90.41	89.03	6,101.41	492.71	5,999.34	6,006.82	0.00	0.00	0.00
12,500.00	90.41	89.03	6,100.69	494.40	6,099.32	6,106.82	0.00	0.00	0.00
12,600.00	90.41	89.03	6,099.97	496.10	6,199.31	6,206.82	0.00	0.00	0.00
12,700.00	90.41	89.03	6,099.25	497.79	6,299.29	6,306.81	0.00	0.00	0.00
12,800.00	90.41	89.03	6,098.54	499.49	6,399.27	6,406.81	0.00	0.00	0.00
12,900.00	90.41	89.03	6,097.82	501.18	6,499.26	6,506.81	0.00	0.00	0.00
13,000.00	90.41	89.03	6,097.10	502.88	6,599.24	6,606.81	0.00	0.00	0.00
13,100.00	90.41	89.03	6,096.39	504.58	6,699.22	6,706.80	0.00	0.00	0.00
13,200.00	90.41	89.03	6,095.67	506.27	6,799.20	6,806.80	0.00	0.00	0.00
13,300.00	90.41	89.03	6,094.95	507.97	6,899.19	6,906.80	0.00	0.00	0.00
13,400.00	90.41	89.03	6,094.23	509.66	6,999.17	7,006.80	0.00	0.00	0.00
13,500.00	90.41	89.03	6,093.52	511.36	7,099.15	7,106.79	0.00	0.00	0.00
13,600.00	90.41	89.03	6,092.80	513.05	7,199.14	7,206.79	0.00	0.00	0.00
13,700.00	90.41	89.03	6,092.08	514.75	7,299.12	7,306.79	0.00	0.00	0.00
13,800.00	90.41	89.03	6,091.37	516.44	7,399.10	7,406.79	0.00	0.00	0.00
13,900.00	90.41	89.03	6,090.65	518.14	7,499.09	7,506.78	0.00	0.00	0.00
14,000.00	90.41	89.03	6,089.93	519.83	7,599.07	7,606.78	0.00	0.00	0.00
14,100.00	90.41	89.03	6,089.21	521.53	7,699.05	7,706.78	0.00	0.00	0.00
14,200.00	90.41	89.03	6,088.50	523.23	7,799.04	7,806.78	0.00	0.00	0.00
14,300.00	90.41	89.03	6,087.78	524.92	7,899.02	7,906.77	0.00	0.00	0.00
14,400.00	90.41	89.03	6,087.06	526.62	7,999.00	8,006.77	0.00	0.00	0.00
14,500.00	90.41	89.03	6,086.35	528.31	8,098.98	8,106.77	0.00	0.00	0.00
14,600.00	90.41	89.03	6,085.63	530.01	8,198.97	8,206.77	0.00	0.00	0.00
14,700.00	90.41	89.03	6,084.91	531.70	8,298.95	8,306.76	0.00	0.00	0.00
14,800.00	90.41	89.03	6,084.19	533.40	8,398.93	8,406.76	0.00	0.00	0.00
14,900.00	90.41	89.03	6,083.48	535.09	8,498.92	8,506.76	0.00	0.00	0.00
15,000.00	90.41	89.03	6,082.76	536.79	8,598.90	8,606.75	0.00	0.00	0.00
15,100.00	90.41	89.03	6,082.04	538.48	8,698.88	8,706.75	0.00	0.00	0.00
15,200.00	90.41	89.03	6,081.33	540.18	8,798.87	8,806.75	0.00	0.00	0.00
15,300.00	90.41	89.03	6,080.61	541.88	8,898.85	8,906.75	0.00	0.00	0.00
15,400.00	90.41	89.03	6,079.89	543.57	8,998.83	9,006.74	0.00	0.00	0.00
15,500.00	90.41	89.03	6,079.17	545.27	9,098.82	9,106.74	0.00	0.00	0.00
15,600.00	90.41	89.03	6,078.46	546.96	9,198.80	9,206.74	0.00	0.00	0.00
15,700.00	90.41	89.03	6,077.74	548.66	9,298.78	9,306.74	0.00	0.00	0.00
15,800.00	90.41	89.03	6,077.02	550.35	9,398.76	9,406.73	0.00	0.00	0.00
15,900.00	90.41	89.03	6,076.31	552.05	9,498.75	9,506.73	0.00	0.00	0.00
16,000.00	90.41	89.03	6,075.59	553.74	9,598.73	9,606.73	0.00	0.00	0.00
16,100.00	90.41	89.03	6,074.87	555.44	9,698.71	9,706.73	0.00	0.00	0.00
16,200.00	90.41	89.03	6,074.15	557.13	9,798.70	9,806.72	0.00	0.00	0.00
TD at 16221.70									
16,221.70	90.41	89.03	6,074.00	557.50	9,820.39	9,828.42	0.00	0.00	0.00

Database:	EDMDBBW	Local Co-ordinate Reference:	Well Anschutz State 5-62-35-4841BH2
Company:	Bill Barrett Corp.	TVD Reference:	Well @ 4596.00usft
Project:	Weld Co., CO	MD Reference:	Well @ 4596.00usft
Site:	Sec.35-T5N-R62W	North Reference:	True
Well:	Anschutz State 5-62-35-4841BH2	Survey Calculation Method:	Minimum Curvature
Wellbore:	Wellbore #1		
Design:	Design #1		

Design Targets									
Target Name	Dip Angle	Dip Dir.	TVD	+N/-S	+E/-W	Northing	Easting	Latitude	Longitude
- hit/miss target	(°)	(°)	(usft)	(usft)	(usft)	(usft)	(usft)		
- Shape									
Anschutz State 5-62-35-	0.00	0.00	6,074.00	557.50	9,820.39	1,374,545.566	3,344,667.169	40° 21' 17.752 N	104° 15' 47.678 W
- plan hits target center									
- Point									

Casing Points					
Measured Depth	Vertical Depth	Name		Casing Diameter	Hole Diameter
(usft)	(usft)			(")	(")
6,460.34	6,144.00	7" Csg.		7	8-3/4

Formations						
Measured Depth	Vertical Depth	Name		Lithology	Dip	Dip Direction
(usft)	(usft)				(°)	(°)
39.68	39.68	Sussex			-0.41	89.03
4,818.00	4,776.00	Shannon			-0.41	89.03
5,960.63	5,906.00	Sharon Springs			-0.41	89.03
6,098.77	6,014.00	Niobrara			-0.41	89.03
6,166.70	6,057.00	A Chalk			-0.41	89.03
6,188.19	6,069.00	B Chalk			-0.41	89.03
6,291.67	6,115.00	Top B Target			-0.41	89.03

Plan Annotations					
Measured Depth	Vertical Depth	Local Coordinates		Comment	
(usft)	(usft)	+N/-S	+E/-W		
(usft)	(usft)	(usft)	(usft)		
900.00	900.00	0.00	0.00	Start Build 2.00	
1,320.97	1,319.45	20.82	-22.79	Start 3464.98 hold at 1320.97 MD	
4,785.94	4,747.09	363.03	-397.34	Start Drop -2.00	
5,206.91	5,166.54	383.85	-420.13	Start 500.01 hold at 5206.91 MD	
5,706.92	5,666.55	383.85	-420.13	Start Build 12.00	
6,460.34	6,144.00	392.00	60.69	Start 9761.36 hold at 6460.34 MD	
16,221.70	6,074.00	557.50	9,820.39	TD at 16221.70	