

T7S, R97W, 6th P.M.

Caerus Oil & Gas LLC

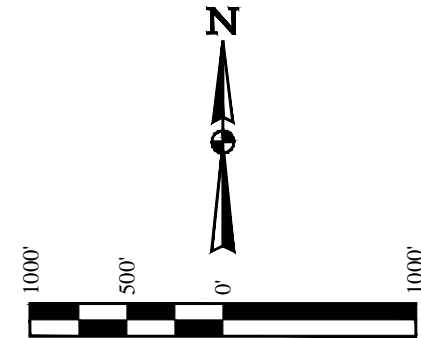
PUCKETT #33C-1
TRACT 63, SECTION 1, T7S, R97W, 6th P.M.
GARFIELD COUNTY, COLORADO

BASIS OF BEARINGS

BASIS OF BEARINGS IS A G.P.S. OBSERVATION

BASIS OF ELEVATION

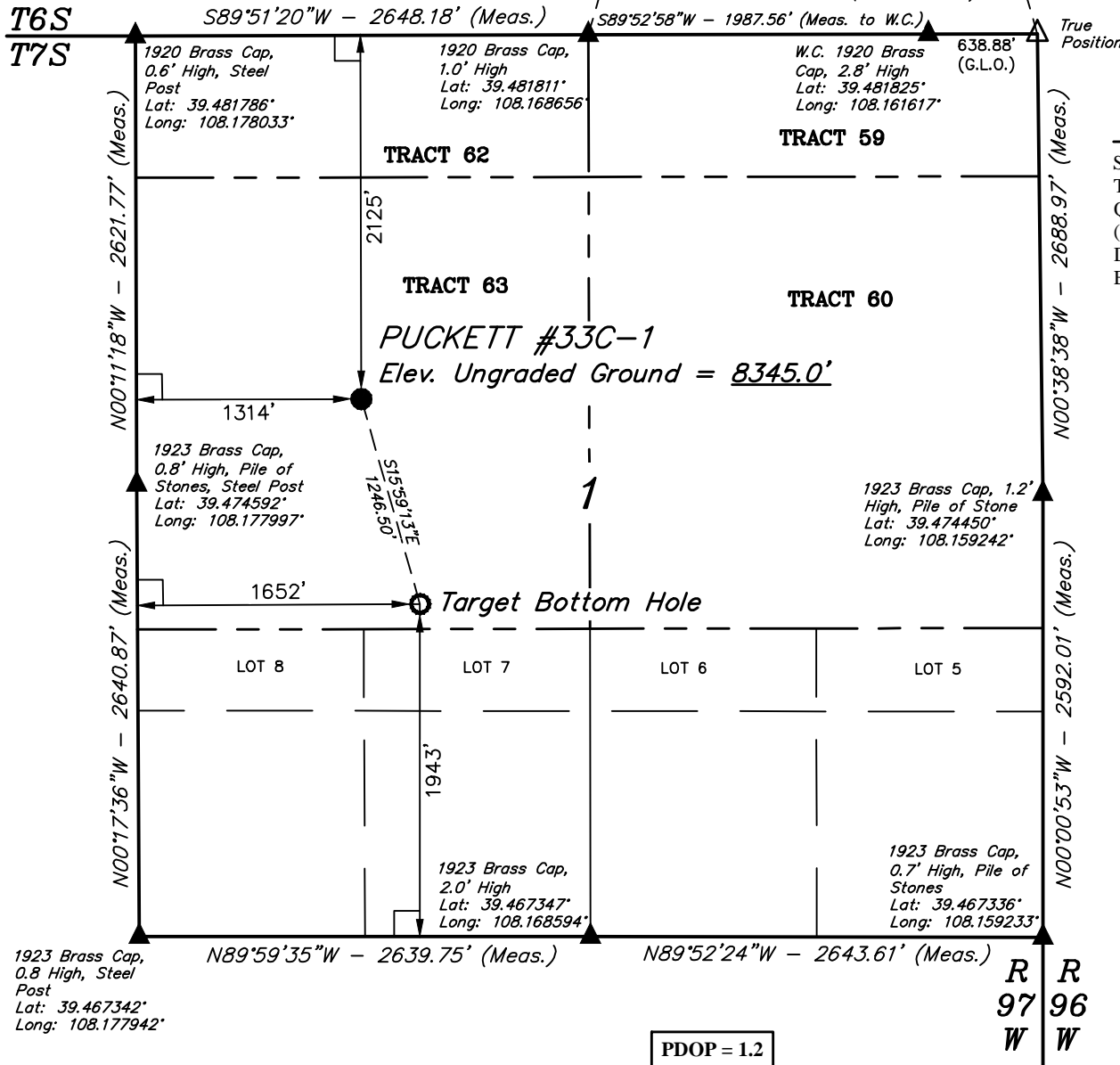
SPOT ELEVATION AT THE NORTHWEST CORNER OF SECTION 30, T5S, R95W, 6th P.M. TAKEN FROM THE FORKED GULCH QUADRANGLE, COLORADO, GARFIELD COUNTY, 7.5 MINUTE SERIES (TOPOGRAPHICAL MAP) PUBLISHED BY THE UNITED STATES DEPARTMENT OF THE INTERIOR, GEOLOGICAL SURVEY. SAID ELEVATION IS MARKED AS BEING 5966 FEET.



CERTIFICATE

THIS IS TO CERTIFY THAT THE ABOVE PLAT WAS PREPARED FROM FIELD NOTES OF ACTUAL SURVEYS MADE BY ME OR UNDER MY SUPERVISION AND THAT THE SAME ARE TRUE AND CORRECT TO THE BEST OF MY KNOWLEDGE AND BELIEF.

Handwritten Signature: Braden Box
 REGISTERED LAND SURVEYOR
 REGISTRATION NO. 38130
 STATE OF COLORADO 06-24-15



PDOP = 1.2

LEGEND:

- └─┘ = 90° SYMBOL
- = PROPOSED WELLHEAD.
- = TARGET BOTTOM HOLE.
- ▲ = SECTION CORNERS LOCATED.
- △ = SECTION CORNERS RE-ESTABLISHED. (Not Set on Ground.)

| NAD 83 (TARGET BOTTOM HOLE) | NAD 83 (SURFACE LOCATION) |
|--|--|
| LATITUDE = 39°28'21.64" (39.472678) | LATITUDE = 39°28'33.48" (39.475967) |
| LONGITUDE = 108°10'19.67" (108.172131) | LONGITUDE = 108°10'24.06" (108.173350) |
| NAD 27 (TARGET BOTTOM HOLE) | NAD 27 (SURFACE LOCATION) |
| LATITUDE = 39°28'21.72" (39.472700) | LATITUDE = 39°28'33.56" (39.475989) |
| LONGITUDE = 108°10'17.38" (108.171494) | LONGITUDE = 108°10'21.77" (108.172714) |
| UTM NAD 27 ZONE 12 | UTM NAD 27 ZONE 12 |
| N: 14346577.00 E: 2438684.70 | N: 14347763.70 E: 2438303.10 |



UELS, LLC
 Corporate Office * 85 South 200 East
 Vernal, UT 84078 * (435) 789-1017

| | |
|-------------------------------|------------------------|
| SURVEYED BY: BRADEN BOX, B.B. | DATE: 10-20-14 |
| DRAWN BY: A.R. | DATE DRAWN: 10-29-14 |
| SCALE: 1" = 1000' | REVISED: 06-24-15 M.D. |

WELL LOCATION PLAT