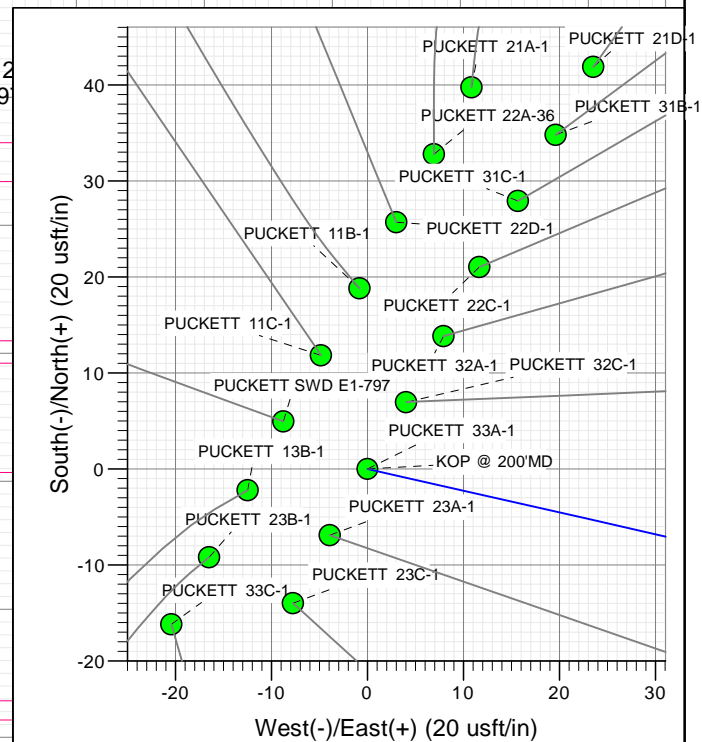
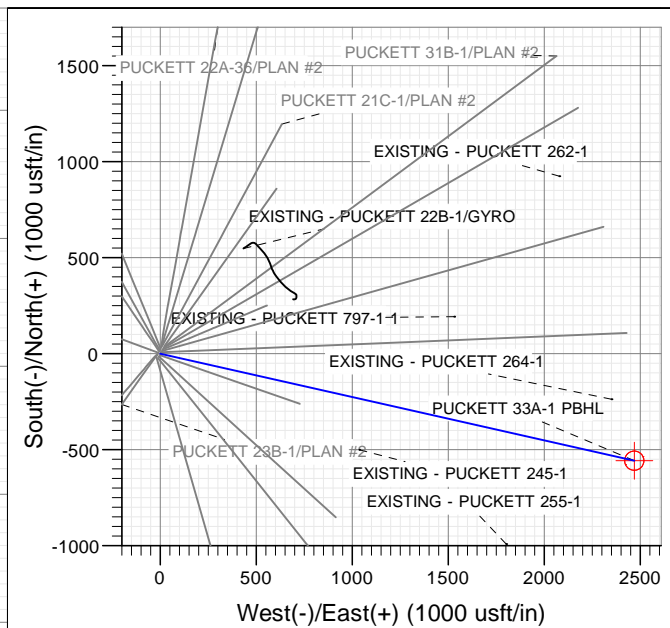
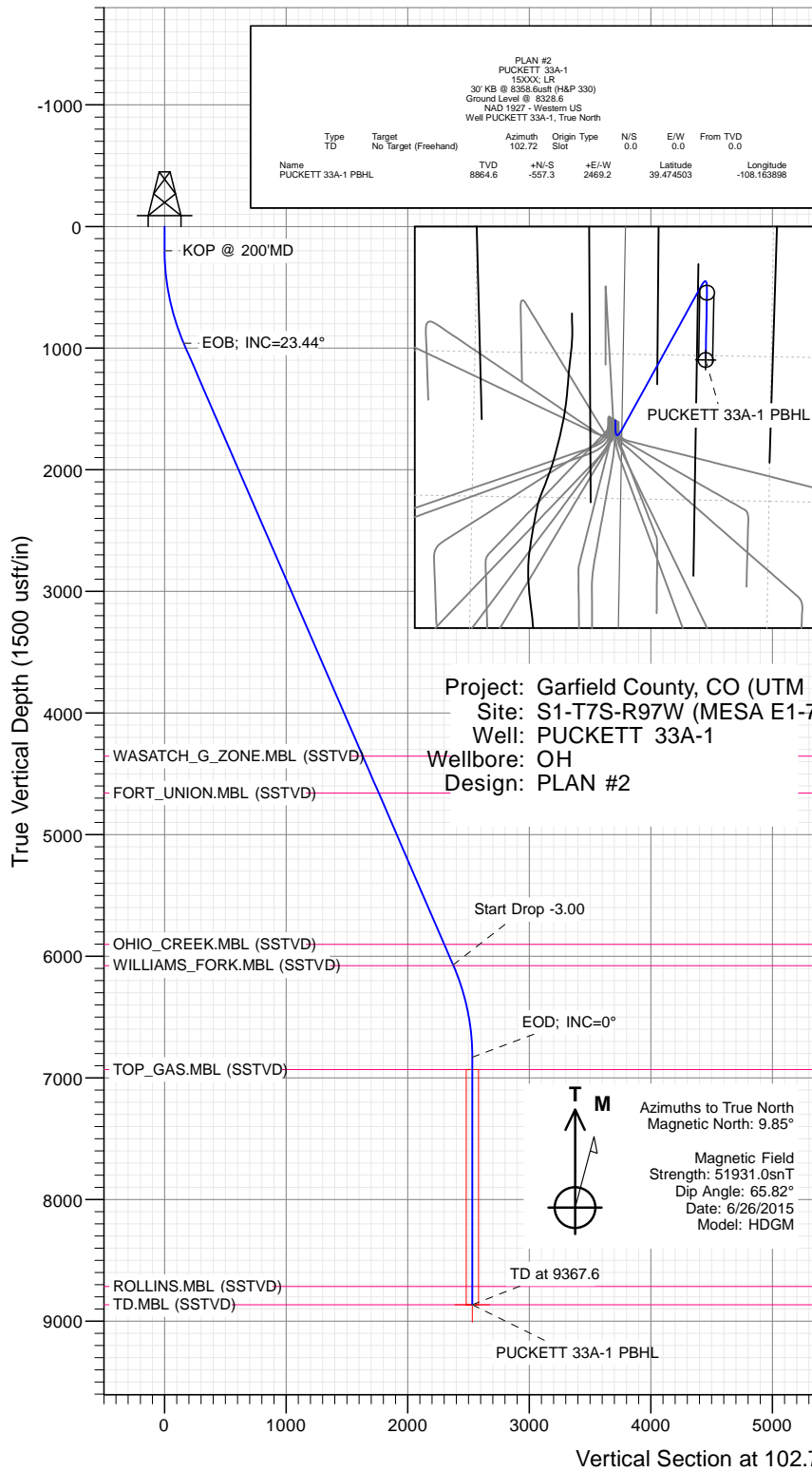




SECTION DETAILS

Sec	MD	Inc	Azi	TVD	+N/-S	+E/-W	Dleg	TFace	Vsect	Target	Annotation
1	0.0	0.00	0.00	0.0	0.0	0.0	0.00	0.00	0.0		KOP @ 200'MD
2	200.0	0.00	0.00	200.0	0.0	0.0	0.00	0.00	0.0		EOB; INC=23.44°
3	981.4	23.44	102.72	959.7	-34.7	153.8	3.00	102.72	157.6		Start Drop -3.00
4	6552.2	23.44	102.72	6070.9	-522.6	2315.5	0.00	0.00	2373.7		EOD; INC=0°
5	7333.6	0.00	0.00	6830.6	-557.3	2469.2	3.00	180.00	2531.3	PUCKETT 33A-1 PBHL	TD at 9367.6
6	9367.6	0.00	0.00	8864.6	-557.3	2469.2	0.00	0.00	2531.3		



WELL DETAILS: PUCKETT 33A-1

+N/-S	+E/-W	Northing	Ground Level:	8328.6	Latitude	Longitude
0.0	0.0	14347780.50	Easting	2438323.00	39.476033	-108.172642

CATHEDRAL



Planning Report

Database:	USA EDM 5000 Multi Users DB	Local Co-ordinate Reference:	Well PUCKETT 33A-1
Company:	Caerus Oil & Gas	TVD Reference:	30' KB @ 8358.6usft (H&P 330)
Project:	Garfield County, CO (UTM 12N)	MD Reference:	30' KB @ 8358.6usft (H&P 330)
Site:	S1-T7S-R97W (MESA E1-797)	North Reference:	True
Well:	PUCKETT 33A-1	Survey Calculation Method:	Minimum Curvature
Wellbore:	OH		
Design:	PLAN #2		

Project	Garfield County, CO (UTM 12N)		
Map System:	Universal Transverse Mercator (US Survey Feet)	System Datum:	Mean Sea Level
Geo Datum:	NAD 1927 - Western US		
Map Zone:	Zone 12N (114 W to 108 W)		

Site		S1-T7S-R97W (MESA E1-797)			
Site Position:		Northing:	14,347,813.50 usft	Latitude:	39.476123
From:	Map	Easting:	2,438,328.90 usft	Longitude:	-108.172618
Position Uncertainty:	0.0 usft	Slot Radius:	13-3/16 "	Grid Convergence:	1.80 °

Well	PUCKETT 33A-1					
Well Position	+N/-S	0.0 usft	Northing:	14,347,780.50 usft	Latitude:	39.476033
	+E/-W	0.0 usft	Easting:	2,438,323.00 usft	Longitude:	-108.172642
Position Uncertainty		0.0 usft	Wellhead Elevation:	0.0 usft	Ground Level:	8,328.6 usft

Wellbore	OH				
Magnetics	Model Name	Sample Date	Declination	Dip Angle	Field Strength
			(°)	(°)	(nT)
	HDGM	6/26/2015	9.85	65.82	51,931

Design	PLAN #2			
Audit Notes:				
Version:	Phase:	PLAN	Tie On Depth:	0.0
Vertical Section:	Depth From (TVD)	+N/-S	+E/-W	Direction
	(usft)	(usft)	(usft)	(°)
	0.0	0.0	0.0	102.72

Plan Sections										
Measured Depth (usft)	Inclination (°)	Azimuth (°)	Vertical Depth (usft)	+N/-S (usft)	+E/-W (usft)	Dogleg Rate (°/100usft)	Build Rate (°/100usft)	Turn Rate (°/100usft)	TFO (°)	Target
0.0	0.00	0.00	0.0	0.0	0.0	0.00	0.00	0.00	0.00	
200.0	0.00	0.00	200.0	0.0	0.0	0.00	0.00	0.00	0.00	
981.4	23.44	102.72	959.7	-34.7	153.8	3.00	3.00	0.00	102.72	
6,552.2	23.44	102.72	6,070.9	-522.6	2,315.5	0.00	0.00	0.00	0.00	
7,333.6	0.00	0.00	6,830.6	-557.3	2,469.2	3.00	-3.00	0.00	180.00	
9,367.6	0.00	0.00	8,864.6	-557.3	2,469.2	0.00	0.00	0.00	0.00	PUCKETT 33A-1 PBH

Planning Report

Database:	USA EDM 5000 Multi Users DB	Local Co-ordinate Reference:	Well PUCKETT 33A-1
Company:	Caerus Oil & Gas	TVD Reference:	30' KB @ 8358.6usft (H&P 330)
Project:	Garfield County, CO (UTM 12N)	MD Reference:	30' KB @ 8358.6usft (H&P 330)
Site:	S1-T7S-R97W (MESA E1-797)	North Reference:	True
Well:	PUCKETT 33A-1	Survey Calculation Method:	Minimum Curvature
Wellbore:	OH		
Design:	PLAN #2		

Planned Survey									
Measured Depth (usft)	Inclination (°)	Azimuth (°)	Vertical Depth (usft)	+N/-S (usft)	+E/-W (usft)	Vertical Section (usft)	Dogleg Rate (°/100usft)	Build Rate (°/100u)	Comments / Formations
0.0	0.00	0.00	0.0	0.0	0.0	0.0	0.00	0.00	
100.0	0.00	0.00	100.0	0.0	0.0	0.0	0.00	0.00	
200.0	0.00	0.00	200.0	0.0	0.0	0.0	0.00	0.00	KOP @ 200'MD
300.0	3.00	102.72	300.0	-0.6	2.6	2.6	3.00	3.00	
400.0	6.00	102.72	399.6	-2.3	10.2	10.5	3.00	3.00	
500.0	9.00	102.72	498.8	-5.2	22.9	23.5	3.00	3.00	
600.0	12.00	102.72	597.1	-9.2	40.7	41.7	3.00	3.00	
700.0	15.00	102.72	694.3	-14.3	63.5	65.1	3.00	3.00	
800.0	18.00	102.72	790.2	-20.6	91.2	93.5	3.00	3.00	
900.0	21.00	102.72	884.4	-27.9	123.7	126.9	3.00	3.00	
981.4	23.44	102.72	959.7	-34.7	153.8	157.6	3.00	3.00	EOB; INC=23.44°
1,000.0	23.44	102.72	976.8	-36.3	161.0	165.0	0.00	0.00	
1,100.0	23.44	102.72	1,068.6	-45.1	199.8	204.8	0.00	0.00	
1,200.0	23.44	102.72	1,160.3	-53.8	238.6	244.6	0.00	0.00	
1,300.0	23.44	102.72	1,252.1	-62.6	277.4	284.4	0.00	0.00	
1,400.0	23.44	102.72	1,343.8	-71.4	316.2	324.2	0.00	0.00	
1,500.0	23.44	102.72	1,435.6	-80.1	355.0	363.9	0.00	0.00	
1,600.0	23.44	102.72	1,527.3	-88.9	393.8	403.7	0.00	0.00	
1,700.0	23.44	102.72	1,619.1	-97.6	432.6	443.5	0.00	0.00	
1,800.0	23.44	102.72	1,710.8	-106.4	471.4	483.3	0.00	0.00	
1,900.0	23.44	102.72	1,802.6	-115.1	510.2	523.1	0.00	0.00	
2,000.0	23.44	102.72	1,894.3	-123.9	549.0	562.8	0.00	0.00	
2,100.0	23.44	102.72	1,986.1	-132.7	587.8	602.6	0.00	0.00	
2,200.0	23.44	102.72	2,077.8	-141.4	626.6	642.4	0.00	0.00	
2,300.0	23.44	102.72	2,169.6	-150.2	665.4	682.2	0.00	0.00	
2,400.0	23.44	102.72	2,261.3	-158.9	704.2	722.0	0.00	0.00	
2,500.0	23.44	102.72	2,353.1	-167.7	743.0	761.7	0.00	0.00	
2,600.0	23.44	102.72	2,444.8	-176.5	781.8	801.5	0.00	0.00	
2,700.0	23.44	102.72	2,536.5	-185.2	820.7	841.3	0.00	0.00	
2,800.0	23.44	102.72	2,628.3	-194.0	859.5	881.1	0.00	0.00	
2,900.0	23.44	102.72	2,720.0	-202.7	898.3	920.9	0.00	0.00	
3,000.0	23.44	102.72	2,811.8	-211.5	937.1	960.6	0.00	0.00	
3,100.0	23.44	102.72	2,903.5	-220.2	975.9	1,000.4	0.00	0.00	
3,200.0	23.44	102.72	2,995.3	-229.0	1,014.7	1,040.2	0.00	0.00	
3,300.0	23.44	102.72	3,087.0	-237.8	1,053.5	1,080.0	0.00	0.00	
3,400.0	23.44	102.72	3,178.8	-246.5	1,092.3	1,119.8	0.00	0.00	
3,500.0	23.44	102.72	3,270.5	-255.3	1,131.1	1,159.5	0.00	0.00	
3,600.0	23.44	102.72	3,362.3	-264.0	1,169.9	1,199.3	0.00	0.00	
3,700.0	23.44	102.72	3,454.0	-272.8	1,208.7	1,239.1	0.00	0.00	
3,800.0	23.44	102.72	3,545.8	-281.5	1,247.5	1,278.9	0.00	0.00	
3,900.0	23.44	102.72	3,637.5	-290.3	1,286.3	1,318.7	0.00	0.00	
4,000.0	23.44	102.72	3,729.3	-299.1	1,325.1	1,358.4	0.00	0.00	
4,100.0	23.44	102.72	3,821.0	-307.8	1,363.9	1,398.2	0.00	0.00	
4,200.0	23.44	102.72	3,912.8	-316.6	1,402.7	1,438.0	0.00	0.00	
4,300.0	23.44	102.72	4,004.5	-325.3	1,441.5	1,477.8	0.00	0.00	
4,400.0	23.44	102.72	4,096.3	-334.1	1,480.3	1,517.6	0.00	0.00	
4,500.0	23.44	102.72	4,188.0	-342.8	1,519.1	1,557.3	0.00	0.00	
4,600.0	23.44	102.72	4,279.7	-351.6	1,557.9	1,597.1	0.00	0.00	
4,681.6	23.44	102.72	4,354.6	-358.7	1,589.6	1,629.6	0.00	0.00	WASATCH_G_ZONE.MBL (SSTVD)
4,700.0	23.44	102.72	4,371.5	-360.4	1,596.7	1,636.9	0.00	0.00	
4,800.0	23.44	102.72	4,463.2	-369.1	1,635.5	1,676.7	0.00	0.00	
4,900.0	23.44	102.72	4,555.0	-377.9	1,674.3	1,716.5	0.00	0.00	

Planning Report

Database:	USA EDM 5000 Multi Users DB	Local Co-ordinate Reference:	Well PUCKETT 33A-1
Company:	Caerus Oil & Gas	TVD Reference:	30' KB @ 8358.6usft (H&P 330)
Project:	Garfield County, CO (UTM 12N)	MD Reference:	30' KB @ 8358.6usft (H&P 330)
Site:	S1-T7S-R97W (MESA E1-797)	North Reference:	True
Well:	PUCKETT 33A-1	Survey Calculation Method:	Minimum Curvature
Wellbore:	OH		
Design:	PLAN #2		

Planned Survey									
Measured Depth (usft)	Inclination (°)	Azimuth (°)	Vertical Depth (usft)	+N/-S (usft)	+E/-W (usft)	Vertical Section (usft)	Dogleg Rate (°/100usft)	Build Rate (°/100u)	Comments / Formations
5,000.0	23.44	102.72	4,646.7	-386.6	1,713.1	1,756.2	0.00	0.00	
5,012.9	23.44	102.72	4,658.6	-387.8	1,718.2	1,761.4	0.00	0.00	FORT_UNION.MBL (SSTVD)
5,100.0	23.44	102.72	4,738.5	-395.4	1,752.0	1,796.0	0.00	0.00	
5,200.0	23.44	102.72	4,830.2	-404.1	1,790.8	1,835.8	0.00	0.00	
5,300.0	23.44	102.72	4,922.0	-412.9	1,829.6	1,875.6	0.00	0.00	
5,400.0	23.44	102.72	5,013.7	-421.7	1,868.4	1,915.4	0.00	0.00	
5,500.0	23.44	102.72	5,105.5	-430.4	1,907.2	1,955.1	0.00	0.00	
5,600.0	23.44	102.72	5,197.2	-439.2	1,946.0	1,994.9	0.00	0.00	
5,700.0	23.44	102.72	5,289.0	-447.9	1,984.8	2,034.7	0.00	0.00	
5,800.0	23.44	102.72	5,380.7	-456.7	2,023.6	2,074.5	0.00	0.00	
5,900.0	23.44	102.72	5,472.5	-465.5	2,062.4	2,114.3	0.00	0.00	
6,000.0	23.44	102.72	5,564.2	-474.2	2,101.2	2,154.0	0.00	0.00	
6,100.0	23.44	102.72	5,656.0	-483.0	2,140.0	2,193.8	0.00	0.00	
6,200.0	23.44	102.72	5,747.7	-491.7	2,178.8	2,233.6	0.00	0.00	
6,300.0	23.44	102.72	5,839.4	-500.5	2,217.6	2,273.4	0.00	0.00	
6,367.7	23.44	102.72	5,901.6	-506.4	2,243.9	2,300.3	0.00	0.00	OHIO_CREEK.MBL (SSTVD)
6,400.0	23.44	102.72	5,931.2	-509.2	2,256.4	2,313.2	0.00	0.00	
6,500.0	23.44	102.72	6,022.9	-518.0	2,295.2	2,352.9	0.00	0.00	
6,552.2	23.44	102.72	6,070.9	-522.6	2,315.5	2,373.7	0.00	0.00	Start Drop -3.00
6,559.6	23.22	102.72	6,077.6	-523.2	2,318.3	2,376.6	3.00	-3.00	WILLIAMS_FORK.MBL (SSTVD)
6,600.0	22.01	102.72	6,114.9	-526.6	2,333.5	2,392.2	3.00	-3.00	
6,700.0	19.01	102.72	6,208.6	-534.3	2,367.6	2,427.2	3.00	-3.00	
6,800.0	16.01	102.72	6,303.9	-541.0	2,397.0	2,457.3	3.00	-3.00	
6,900.0	13.01	102.72	6,400.7	-546.5	2,421.4	2,482.3	3.00	-3.00	
7,000.0	10.01	102.72	6,498.7	-550.9	2,440.9	2,502.3	3.00	-3.00	
7,100.0	7.01	102.72	6,597.6	-554.1	2,455.3	2,517.1	3.00	-3.00	
7,200.0	4.01	102.72	6,697.1	-556.2	2,464.7	2,526.7	3.00	-3.00	
7,300.0	1.01	102.72	6,797.0	-557.2	2,468.9	2,531.0	3.00	-3.00	
7,333.6	0.00	0.00	6,830.6	-557.3	2,469.2	2,531.3	3.00	-3.00	EOD; INC=0°
7,400.0	0.00	0.00	6,897.0	-557.3	2,469.2	2,531.3	0.00	0.00	
7,433.6	0.00	0.00	6,930.6	-557.3	2,469.2	2,531.3	0.00	0.00	TOP_GAS.MBL (SSTVD)
7,500.0	0.00	0.00	6,997.0	-557.3	2,469.2	2,531.3	0.00	0.00	
7,600.0	0.00	0.00	7,097.0	-557.3	2,469.2	2,531.3	0.00	0.00	
7,700.0	0.00	0.00	7,197.0	-557.3	2,469.2	2,531.3	0.00	0.00	
7,800.0	0.00	0.00	7,297.0	-557.3	2,469.2	2,531.3	0.00	0.00	
7,900.0	0.00	0.00	7,397.0	-557.3	2,469.2	2,531.3	0.00	0.00	
8,000.0	0.00	0.00	7,497.0	-557.3	2,469.2	2,531.3	0.00	0.00	
8,100.0	0.00	0.00	7,597.0	-557.3	2,469.2	2,531.3	0.00	0.00	
8,200.0	0.00	0.00	7,697.0	-557.3	2,469.2	2,531.3	0.00	0.00	
8,300.0	0.00	0.00	7,797.0	-557.3	2,469.2	2,531.3	0.00	0.00	
8,400.0	0.00	0.00	7,897.0	-557.3	2,469.2	2,531.3	0.00	0.00	
8,500.0	0.00	0.00	7,997.0	-557.3	2,469.2	2,531.3	0.00	0.00	
8,600.0	0.00	0.00	8,097.0	-557.3	2,469.2	2,531.3	0.00	0.00	
8,700.0	0.00	0.00	8,197.0	-557.3	2,469.2	2,531.3	0.00	0.00	
8,800.0	0.00	0.00	8,297.0	-557.3	2,469.2	2,531.3	0.00	0.00	
8,900.0	0.00	0.00	8,397.0	-557.3	2,469.2	2,531.3	0.00	0.00	
9,000.0	0.00	0.00	8,497.0	-557.3	2,469.2	2,531.3	0.00	0.00	
9,100.0	0.00	0.00	8,597.0	-557.3	2,469.2	2,531.3	0.00	0.00	
9,200.0	0.00	0.00	8,697.0	-557.3	2,469.2	2,531.3	0.00	0.00	
9,217.6	0.00	0.00	8,714.6	-557.3	2,469.2	2,531.3	0.00	0.00	ROLLINS.MBL (SSTVD)
9,300.0	0.00	0.00	8,797.0	-557.3	2,469.2	2,531.3	0.00	0.00	
9,367.6	0.00	0.00	8,864.6	-557.3	2,469.2	2,531.3	0.00	0.00	TD at 9367.6 - TD.MBL (SSTVD)

Planning Report

Database:	USA EDM 5000 Multi Users DB	Local Co-ordinate Reference:	Well PUCKETT 33A-1
Company:	Caerus Oil & Gas	TVD Reference:	30' KB @ 8358.6usft (H&P 330)
Project:	Garfield County, CO (UTM 12N)	MD Reference:	30' KB @ 8358.6usft (H&P 330)
Site:	S1-T7S-R97W (MESA E1-797)	North Reference:	True
Well:	PUCKETT 33A-1	Survey Calculation Method:	Minimum Curvature
Wellbore:	OH		
Design:	PLAN #2		

Targets									
Target Name									
- hit/miss target	Dip Angle	Dip Dir.	TVD	+N/-S	+E/-W	Northing	Easting	Latitude	Longitude
- Shape	(°)	(°)	(usft)	(usft)	(usft)	(usft)	(usft)		
PUCKETT 33A-1 PBHL	0.00	0.00	8,864.6	-557.3	2,469.2	14,347,301.00	2,440,808.50	39.474503	-108.163898
- plan hits target center									
- Circle (radius 50.0)									

Formations						
Measured Depth	Vertical Depth	Name	Lithology	Dip	Dip Direction	
(usft)	(usft)			(°)	(°)	
4,681.6	4,354.6	WASATCH_G_ZONE.MBL (SSTVD)		0.00		
5,012.9	4,658.6	FORT_UNION.MBL (SSTVD)		0.00		
6,367.7	5,901.6	OHIO_CREEK.MBL (SSTVD)		0.00		
6,559.6	6,077.6	WILLIAMS_FORK.MBL (SSTVD)		0.00		
7,433.6	6,930.6	TOP_GAS.MBL (SSTVD)		0.00		
9,217.6	8,714.6	ROLLINS.MBL (SSTVD)		0.00		
9,367.6	8,864.6	TD.MBL (SSTVD)		0.00		

Plan Annotations					
Measured Depth	Vertical Depth	Local Coordinates			
(usft)	(usft)	+N/-S	+E/-W	Comment	
(usft)	(usft)	(usft)	(usft)		
200.0	200.0	0.0	0.0	KOP @ 200'MD	
981.4	959.7	-34.7	153.8	EOB; INC=23.44°	
6,552.2	6,070.9	-522.6	2,315.5	Start Drop -3.00	
7,333.6	6,830.6	-557.3	2,469.2	EOD; INC=0°	
9,367.6	8,864.6	-557.3	2,469.2	TD at 9367.6	