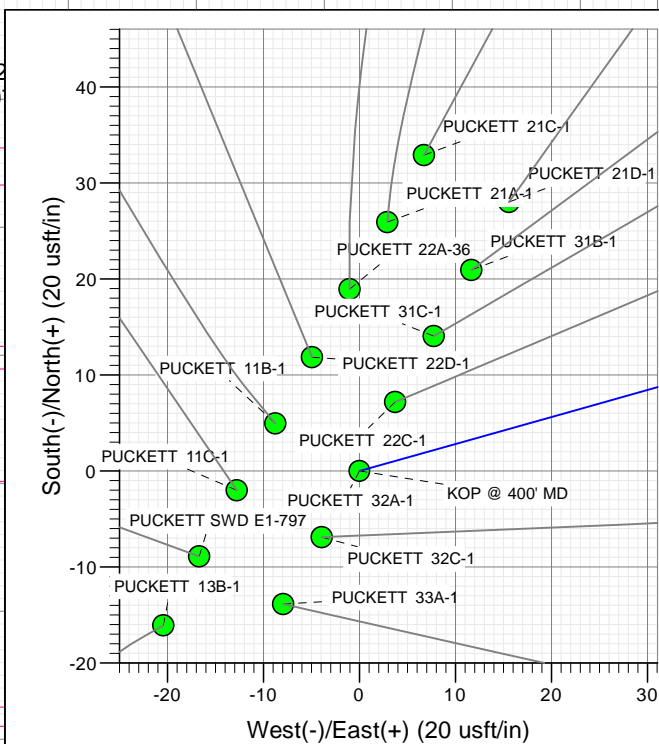
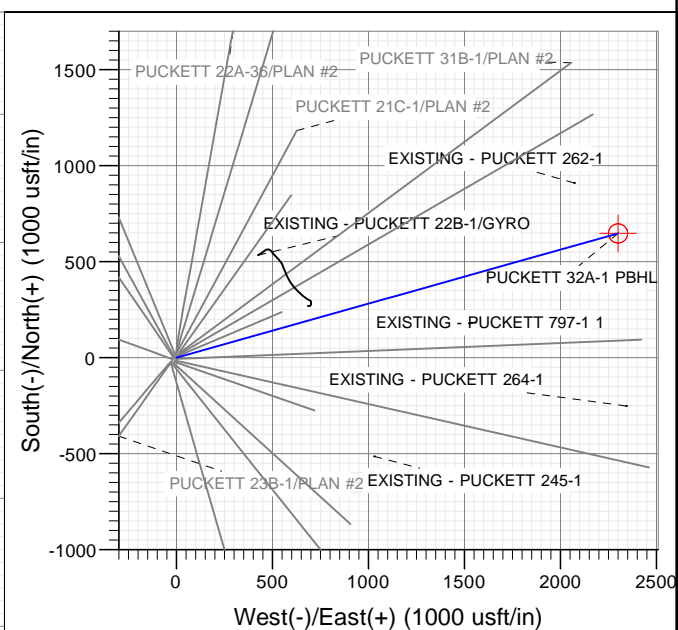
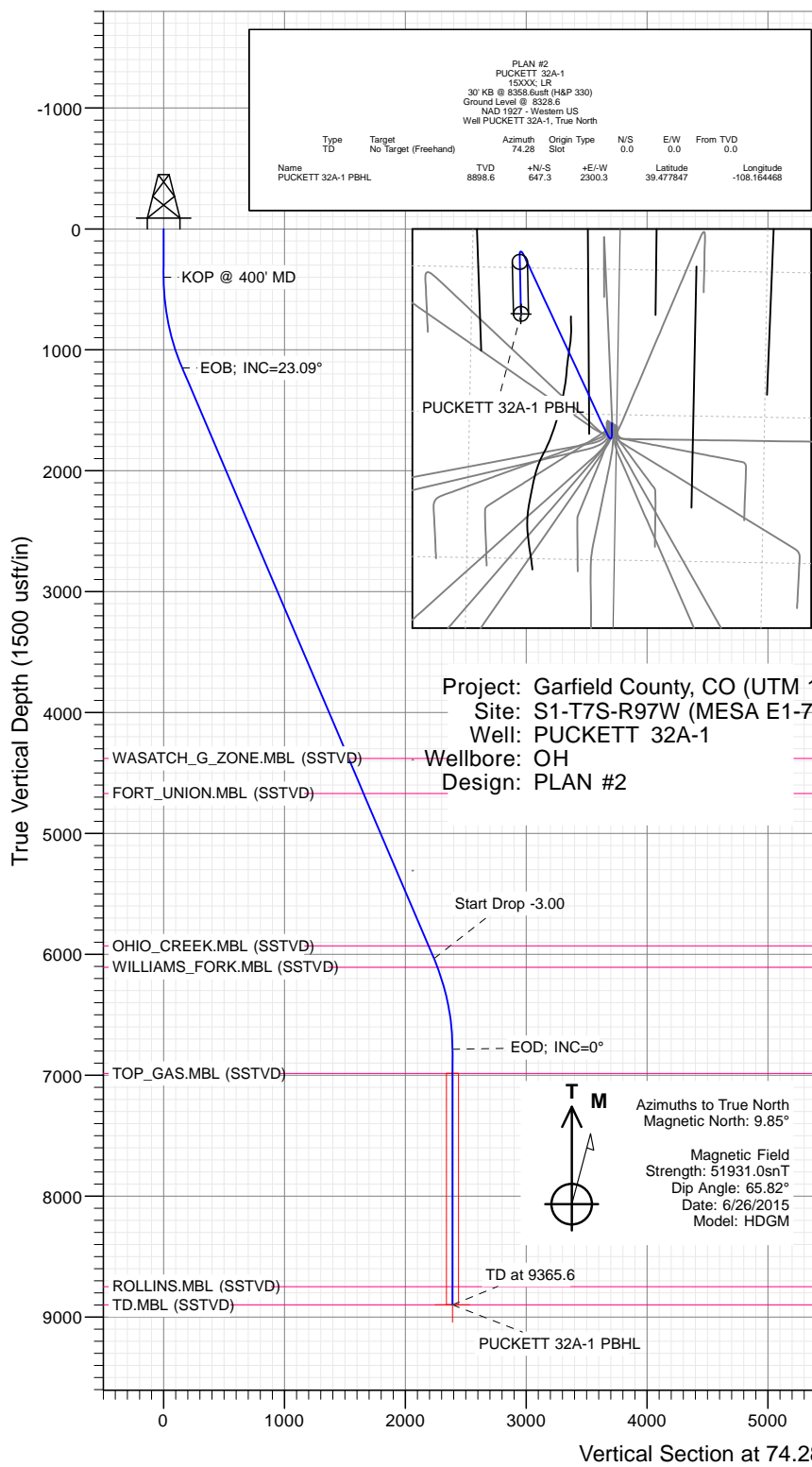




# SECTION DETAILS

Sec	MD	Inc	Azi	TVD	+N/-S	+E/-W	Dleg	TFace	Vsect	Target	Annotation
1	0.0	0.00	0.00	0.0	0.0	0.0	0.00	0.00	0.0		KOP @ 400' MD
2	400.0	0.00	0.00	400.0	0.0	0.0	0.00	0.00	0.0		EOB; INC=23.09°
3	1169.8	23.09	74.28	1149.1	41.5	147.3	3.00	74.28	153.0		Start Drop -3.00
4	6481.8	23.09	74.28	6035.5	605.9	2153.0	0.00	0.00	2236.6		EOD; INC=0°
5	7251.6	0.00	0.00	6784.6	647.3	2300.3	3.00	180.00	2389.7		TD at 9365.6
6	9365.6	0.00	0.00	8898.6	647.3	2300.3	0.00	0.00	2389.7	PUCKETT 32A-1 PBHL	



## WELL DETAILS: PUCKETT 32A-1

+N/-S	+E/-W	Northing	Ground Level:	8328.6	Latitude	Longitude
0.0	0.0	14347794.60	Easting	2438330.50	39.476071	-108.172614



## Planning Report

<b>Database:</b>	USA EDM 5000 Multi Users DB	<b>Local Co-ordinate Reference:</b>	Well PUCKETT 32A-1
<b>Company:</b>	Caerus Oil & Gas	<b>TVD Reference:</b>	30' KB @ 8358.6usft (H&P 330)
<b>Project:</b>	Garfield County, CO (UTM 12N)	<b>MD Reference:</b>	30' KB @ 8358.6usft (H&P 330)
<b>Site:</b>	S1-T7S-R97W (MESA E1-797)	<b>North Reference:</b>	True
<b>Well:</b>	PUCKETT 32A-1	<b>Survey Calculation Method:</b>	Minimum Curvature
<b>Wellbore:</b>	OH		
<b>Design:</b>	PLAN #2		

<b>Project</b>	Garfield County, CO (UTM 12N)		
<b>Map System:</b>	Universal Transverse Mercator (US Survey Feet)	<b>System Datum:</b>	Mean Sea Level
<b>Geo Datum:</b>	NAD 1927 - Western US		
<b>Map Zone:</b>	Zone 12N (114 W to 108 W)		

Site		S1-T7S-R97W (MESA E1-797)			
Site Position:		Northing:		14,347,813.50 usft	
From:		Easting:		2,438,328.90 usft	
Position Uncertainty:		Slot Radius:		Grid Convergence:	
Map		0.0 usft		13-3/16 "	
				39.476123	
				-108.172618	
				1.80 °	

Well	PUCKETT 32A-1					
Well Position	+N/-S	0.0 usft	Northing:	14,347,794.60 usft	Latitude:	39.476071
	+E/-W	0.0 usft	Easting:	2,438,330.50 usft	Longitude:	-108.172614
Position Uncertainty		0.0 usft	Wellhead Elevation:	0.0 usft	Ground Level:	8,328.6 usft

<b>Wellbore</b>	OH				
<b>Magnetics</b>	<b>Model Name</b>	<b>Sample Date</b>	<b>Declination</b>	<b>Dip Angle</b>	<b>Field Strength</b>
			(°)	(°)	(nT)
	HDGM	6/26/2015	9.85	65.82	51,931

<b>Design</b>	PLAN #2			
<b>Audit Notes:</b>				
<b>Version:</b>	<b>Phase:</b>	PLAN	<b>Tie On Depth:</b>	0.0
<b>Vertical Section:</b>	<b>Depth From (TVD)</b>	<b>+N/-S</b>	<b>+E/-W</b>	<b>Direction</b>
	(usft)	(usft)	(usft)	(°)
	0.0	0.0	0.0	74.28

<b>Plan Sections</b>										
Measured Depth (usft)	Inclination (°)	Azimuth (°)	Vertical Depth (usft)	+N/-S (usft)	+E/-W (usft)	Dogleg Rate (°/100usft)	Build Rate (°/100usft)	Turn Rate (°/100usft)	TFO (°)	Target
0.0	0.00	0.00	0.0	0.0	0.0	0.00	0.00	0.00	0.00	
400.0	0.00	0.00	400.0	0.0	0.0	0.00	0.00	0.00	0.00	
1,169.8	23.09	74.28	1,149.1	41.5	147.3	3.00	3.00	0.00	74.28	
6,481.8	23.09	74.28	6,035.5	605.9	2,153.0	0.00	0.00	0.00	0.00	
7,251.6	0.00	0.00	6,784.6	647.3	2,300.3	3.00	-3.00	0.00	180.00	
9,365.6	0.00	0.00	8,898.6	647.3	2,300.3	0.00	0.00	0.00	0.00	PUCKETT 32A-1 PB+

# Planning Report

<b>Database:</b>	USA EDM 5000 Multi Users DB	<b>Local Co-ordinate Reference:</b>	Well PUCKETT 32A-1
<b>Company:</b>	Caerus Oil & Gas	<b>TVD Reference:</b>	30' KB @ 8358.6usft (H&P 330)
<b>Project:</b>	Garfield County, CO (UTM 12N)	<b>MD Reference:</b>	30' KB @ 8358.6usft (H&P 330)
<b>Site:</b>	S1-T7S-R97W (MESA E1-797)	<b>North Reference:</b>	True
<b>Well:</b>	PUCKETT 32A-1	<b>Survey Calculation Method:</b>	Minimum Curvature
<b>Wellbore:</b>	OH		
<b>Design:</b>	PLAN #2		

Planned Survey									
Measured Depth (usft)	Inclination (°)	Azimuth (°)	Vertical Depth (usft)	+N/-S (usft)	+E/-W (usft)	Vertical Section (usft)	Dogleg Rate (°/100usft)	Build Rate (°/100u)	Comments / Formations
0.0	0.00	0.00	0.0	0.0	0.0	0.0	0.00	0.00	
100.0	0.00	0.00	100.0	0.0	0.0	0.0	0.00	0.00	
200.0	0.00	0.00	200.0	0.0	0.0	0.0	0.00	0.00	
300.0	0.00	0.00	300.0	0.0	0.0	0.0	0.00	0.00	
400.0	0.00	0.00	400.0	0.0	0.0	0.0	0.00	0.00	KOP @ 400' MD
500.0	3.00	74.28	500.0	0.7	2.5	2.6	3.00	3.00	
600.0	6.00	74.28	599.6	2.8	10.1	10.5	3.00	3.00	
700.0	9.00	74.28	698.8	6.4	22.6	23.5	3.00	3.00	
800.0	12.00	74.28	797.1	11.3	40.2	41.7	3.00	3.00	
900.0	15.00	74.28	894.3	17.6	62.6	65.1	3.00	3.00	
1,000.0	18.00	74.28	990.2	25.3	90.0	93.5	3.00	3.00	
1,100.0	21.00	74.28	1,084.4	34.4	122.1	126.9	3.00	3.00	
1,169.8	23.09	74.28	1,149.1	41.5	147.3	153.0	3.00	3.00	EOB; INC=23.09°
1,200.0	23.09	74.28	1,176.9	44.7	158.7	164.9	0.00	0.00	
1,300.0	23.09	74.28	1,268.9	55.3	196.5	204.1	0.00	0.00	
1,400.0	23.09	74.28	1,360.9	65.9	234.2	243.3	0.00	0.00	
1,500.0	23.09	74.28	1,452.9	76.5	272.0	282.6	0.00	0.00	
1,600.0	23.09	74.28	1,544.8	87.2	309.8	321.8	0.00	0.00	
1,700.0	23.09	74.28	1,636.8	97.8	347.5	361.0	0.00	0.00	
1,800.0	23.09	74.28	1,728.8	108.4	385.3	400.2	0.00	0.00	
1,900.0	23.09	74.28	1,820.8	119.0	423.0	439.5	0.00	0.00	
2,000.0	23.09	74.28	1,912.8	129.7	460.8	478.7	0.00	0.00	
2,100.0	23.09	74.28	2,004.8	140.3	498.5	517.9	0.00	0.00	
2,200.0	23.09	74.28	2,096.8	150.9	536.3	557.1	0.00	0.00	
2,300.0	23.09	74.28	2,188.8	161.5	574.1	596.4	0.00	0.00	
2,400.0	23.09	74.28	2,280.7	172.2	611.8	635.6	0.00	0.00	
2,500.0	23.09	74.28	2,372.7	182.8	649.6	674.8	0.00	0.00	
2,600.0	23.09	74.28	2,464.7	193.4	687.3	714.0	0.00	0.00	
2,700.0	23.09	74.28	2,556.7	204.0	725.1	753.3	0.00	0.00	
2,800.0	23.09	74.28	2,648.7	214.7	762.9	792.5	0.00	0.00	
2,900.0	23.09	74.28	2,740.7	225.3	800.6	831.7	0.00	0.00	
3,000.0	23.09	74.28	2,832.7	235.9	838.4	870.9	0.00	0.00	
3,100.0	23.09	74.28	2,924.6	246.5	876.1	910.2	0.00	0.00	
3,200.0	23.09	74.28	3,016.6	257.2	913.9	949.4	0.00	0.00	
3,300.0	23.09	74.28	3,108.6	267.8	951.6	988.6	0.00	0.00	
3,400.0	23.09	74.28	3,200.6	278.4	989.4	1,027.8	0.00	0.00	
3,500.0	23.09	74.28	3,292.6	289.0	1,027.2	1,067.0	0.00	0.00	
3,600.0	23.09	74.28	3,384.6	299.7	1,064.9	1,106.3	0.00	0.00	
3,700.0	23.09	74.28	3,476.6	310.3	1,102.7	1,145.5	0.00	0.00	
3,800.0	23.09	74.28	3,568.5	320.9	1,140.4	1,184.7	0.00	0.00	
3,900.0	23.09	74.28	3,660.5	331.5	1,178.2	1,223.9	0.00	0.00	
4,000.0	23.09	74.28	3,752.5	342.2	1,215.9	1,263.2	0.00	0.00	
4,100.0	23.09	74.28	3,844.5	352.8	1,253.7	1,302.4	0.00	0.00	
4,200.0	23.09	74.28	3,936.5	363.4	1,291.5	1,341.6	0.00	0.00	
4,300.0	23.09	74.28	4,028.5	374.0	1,329.2	1,380.8	0.00	0.00	
4,400.0	23.09	74.28	4,120.5	384.7	1,367.0	1,420.1	0.00	0.00	
4,500.0	23.09	74.28	4,212.5	395.3	1,404.7	1,459.3	0.00	0.00	
4,600.0	23.09	74.28	4,304.4	405.9	1,442.5	1,498.5	0.00	0.00	
4,680.6	23.09	74.28	4,378.6	414.5	1,472.9	1,530.1	0.00	0.00	WASATCH_G_ZONE.MBL (SSTVD)
4,700.0	23.09	74.28	4,396.4	416.5	1,480.2	1,537.7	0.00	0.00	
4,800.0	23.09	74.28	4,488.4	427.2	1,518.0	1,577.0	0.00	0.00	
4,900.0	23.09	74.28	4,580.4	437.8	1,555.8	1,616.2	0.00	0.00	

# Planning Report

<b>Database:</b>	USA EDM 5000 Multi Users DB	<b>Local Co-ordinate Reference:</b>	Well PUCKETT 32A-1
<b>Company:</b>	Caerus Oil & Gas	<b>TVD Reference:</b>	30' KB @ 8358.6usft (H&P 330)
<b>Project:</b>	Garfield County, CO (UTM 12N)	<b>MD Reference:</b>	30' KB @ 8358.6usft (H&P 330)
<b>Site:</b>	S1-T7S-R97W (MESA E1-797)	<b>North Reference:</b>	True
<b>Well:</b>	PUCKETT 32A-1	<b>Survey Calculation Method:</b>	Minimum Curvature
<b>Wellbore:</b>	OH		
<b>Design:</b>	PLAN #2		

Planned Survey									
Measured Depth (usft)	Inclination (°)	Azimuth (°)	Vertical Depth (usft)	+N/-S (usft)	+E/-W (usft)	Vertical Section (usft)	Dogleg Rate (°/100usft)	Build Rate (°/100u)	Comments / Formations
4,998.1	23.09	74.28	4,670.6	448.2	1,592.8	1,654.6	0.00	0.00	FORT_UNION.MBL (SSTVD)
5,000.0	23.09	74.28	4,672.4	448.4	1,593.5	1,655.4	0.00	0.00	
5,100.0	23.09	74.28	4,764.4	459.0	1,631.3	1,694.6	0.00	0.00	
5,200.0	23.09	74.28	4,856.4	469.7	1,669.0	1,733.9	0.00	0.00	
5,300.0	23.09	74.28	4,948.3	480.3	1,706.8	1,773.1	0.00	0.00	
5,400.0	23.09	74.28	5,040.3	490.9	1,744.5	1,812.3	0.00	0.00	
5,500.0	23.09	74.28	5,132.3	501.5	1,782.3	1,851.5	0.00	0.00	
5,600.0	23.09	74.28	5,224.3	512.2	1,820.1	1,890.7	0.00	0.00	
5,700.0	23.09	74.28	5,316.3	522.8	1,857.8	1,930.0	0.00	0.00	
5,800.0	23.09	74.28	5,408.3	533.4	1,895.6	1,969.2	0.00	0.00	
5,900.0	23.09	74.28	5,500.3	544.0	1,933.3	2,008.4	0.00	0.00	OHIO_CREEK.MBL (SSTVD)
6,000.0	23.09	74.28	5,592.2	554.7	1,971.1	2,047.6	0.00	0.00	
6,100.0	23.09	74.28	5,684.2	565.3	2,008.8	2,086.9	0.00	0.00	
6,200.0	23.09	74.28	5,776.2	575.9	2,046.6	2,126.1	0.00	0.00	
6,300.0	23.09	74.28	5,868.2	586.5	2,084.4	2,165.3	0.00	0.00	
6,366.7	23.09	74.28	5,929.6	593.6	2,109.6	2,191.5	0.00	0.00	
6,400.0	23.09	74.28	5,960.2	597.2	2,122.1	2,204.5	0.00	0.00	
6,481.8	23.09	74.28	6,035.5	605.9	2,153.0	2,236.6	0.00	0.00	
6,500.0	22.55	74.28	6,052.2	607.8	2,159.8	2,243.7	3.00	-3.00	
6,558.5	20.79	74.28	6,106.6	613.6	2,180.6	2,265.3	3.00	-3.00	WILLIAMS_FORK.MBL (SSTVD)
6,600.0	19.55	74.28	6,145.5	617.5	2,194.4	2,279.6	3.00	-3.00	
6,700.0	16.55	74.28	6,240.6	625.9	2,224.2	2,310.6	3.00	-3.00	
6,800.0	13.55	74.28	6,337.2	632.9	2,249.2	2,336.5	3.00	-3.00	
6,900.0	10.55	74.28	6,434.9	638.6	2,269.3	2,357.4	3.00	-3.00	
7,000.0	7.55	74.28	6,533.7	642.8	2,284.4	2,373.1	3.00	-3.00	
7,100.0	4.55	74.28	6,633.1	645.7	2,294.6	2,383.7	3.00	-3.00	
7,200.0	1.55	74.28	6,733.0	647.1	2,299.7	2,389.0	3.00	-3.00	
7,251.6	0.00	0.00	6,784.6	647.3	2,300.3	2,389.7	3.00	-3.00	
7,300.0	0.00	0.00	6,833.0	647.3	2,300.3	2,389.7	0.00	0.00	TOP_GAS.MBL (SSTVD)
7,400.0	0.00	0.00	6,933.0	647.3	2,300.3	2,389.7	0.00	0.00	
7,451.6	0.00	0.00	6,984.6	647.3	2,300.3	2,389.7	0.00	0.00	
7,500.0	0.00	0.00	7,033.0	647.3	2,300.3	2,389.7	0.00	0.00	
7,600.0	0.00	0.00	7,133.0	647.3	2,300.3	2,389.7	0.00	0.00	
7,700.0	0.00	0.00	7,233.0	647.3	2,300.3	2,389.7	0.00	0.00	
7,800.0	0.00	0.00	7,333.0	647.3	2,300.3	2,389.7	0.00	0.00	
7,900.0	0.00	0.00	7,433.0	647.3	2,300.3	2,389.7	0.00	0.00	
8,000.0	0.00	0.00	7,533.0	647.3	2,300.3	2,389.7	0.00	0.00	
8,100.0	0.00	0.00	7,633.0	647.3	2,300.3	2,389.7	0.00	0.00	ROLLINS.MBL (SSTVD)
8,200.0	0.00	0.00	7,733.0	647.3	2,300.3	2,389.7	0.00	0.00	
8,300.0	0.00	0.00	7,833.0	647.3	2,300.3	2,389.7	0.00	0.00	
8,400.0	0.00	0.00	7,933.0	647.3	2,300.3	2,389.7	0.00	0.00	
8,500.0	0.00	0.00	8,033.0	647.3	2,300.3	2,389.7	0.00	0.00	
8,600.0	0.00	0.00	8,133.0	647.3	2,300.3	2,389.7	0.00	0.00	
8,700.0	0.00	0.00	8,233.0	647.3	2,300.3	2,389.7	0.00	0.00	
8,800.0	0.00	0.00	8,333.0	647.3	2,300.3	2,389.7	0.00	0.00	
8,900.0	0.00	0.00	8,433.0	647.3	2,300.3	2,389.7	0.00	0.00	
9,000.0	0.00	0.00	8,533.0	647.3	2,300.3	2,389.7	0.00	0.00	TD at 9365.6 - TD.MBL (SSTVD)
9,100.0	0.00	0.00	8,633.0	647.3	2,300.3	2,389.7	0.00	0.00	
9,200.0	0.00	0.00	8,733.0	647.3	2,300.3	2,389.7	0.00	0.00	
9,215.6	0.00	0.00	8,748.6	647.3	2,300.3	2,389.7	0.00	0.00	
9,300.0	0.00	0.00	8,833.0	647.3	2,300.3	2,389.7	0.00	0.00	
9,365.6	0.00	0.00	8,898.6	647.3	2,300.3	2,389.7	0.00	0.00	

## Planning Report

<b>Database:</b>	USA EDM 5000 Multi Users DB	<b>Local Co-ordinate Reference:</b>	Well PUCKETT 32A-1
<b>Company:</b>	Caerus Oil & Gas	<b>TVD Reference:</b>	30' KB @ 8358.6usft (H&P 330)
<b>Project:</b>	Garfield County, CO (UTM 12N)	<b>MD Reference:</b>	30' KB @ 8358.6usft (H&P 330)
<b>Site:</b>	S1-T7S-R97W (MESA E1-797)	<b>North Reference:</b>	True
<b>Well:</b>	PUCKETT 32A-1	<b>Survey Calculation Method:</b>	Minimum Curvature
<b>Wellbore:</b>	OH		
<b>Design:</b>	PLAN #2		

### Targets

Target Name	Dip Angle (°)	Dip Dir. (°)	TVD (usft)	+N/-S (usft)	+E/-W (usft)	Northing (usft)	Easting (usft)	Latitude	Longitude
- hit/miss target									
- Shape									
PUCKETT 32A-1 PBHL	0.00	0.00	8,898.6	647.3	2,300.3	14,348,513.80	2,440,609.40	39.477847	-108.164468
- plan hits target center									
- Circle (radius 50.0)									

### Formations

Measured Depth (usft)	Vertical Depth (usft)	Name	Lithology	Dip (°)	Dip Direction (°)
4,680.6	4,378.6	WASATCH_G_ZONE.MBL (SSTVD)		0.00	
4,998.1	4,670.6	FORT_UNION.MBL (SSTVD)		0.00	
6,366.7	5,929.6	OHIO_CREEK.MBL (SSTVD)		0.00	
6,558.5	6,106.6	WILLIAMS_FORK.MBL (SSTVD)		0.00	
7,451.6	6,984.6	TOP_GAS.MBL (SSTVD)		0.00	
9,215.6	8,748.6	ROLLINS.MBL (SSTVD)		0.00	
9,365.6	8,898.6	TD.MBL (SSTVD)		0.00	

### Plan Annotations

Measured Depth (usft)	Vertical Depth (usft)	Local Coordinates		Comment
		+N/-S (usft)	+E/-W (usft)	
400.0	400.0	0.0	0.0	KOP @ 400' MD
1,169.8	1,149.1	41.5	147.3	EOB; INC=23.09°
6,481.8	6,035.5	605.9	2,153.0	Start Drop -3.00
7,251.6	6,784.6	647.3	2,300.3	EOD; INC=0°
9,365.6	8,898.6	647.3	2,300.3	TD at 9365.6