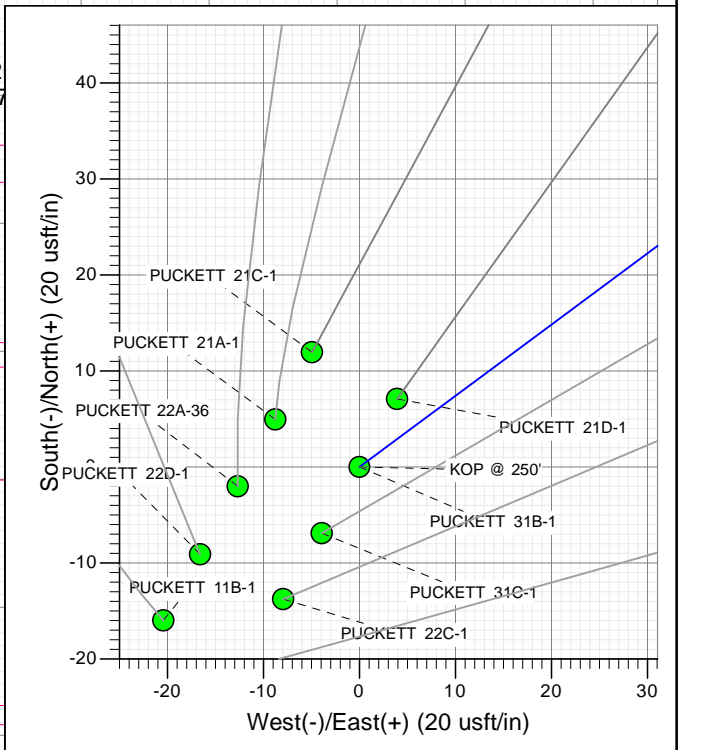
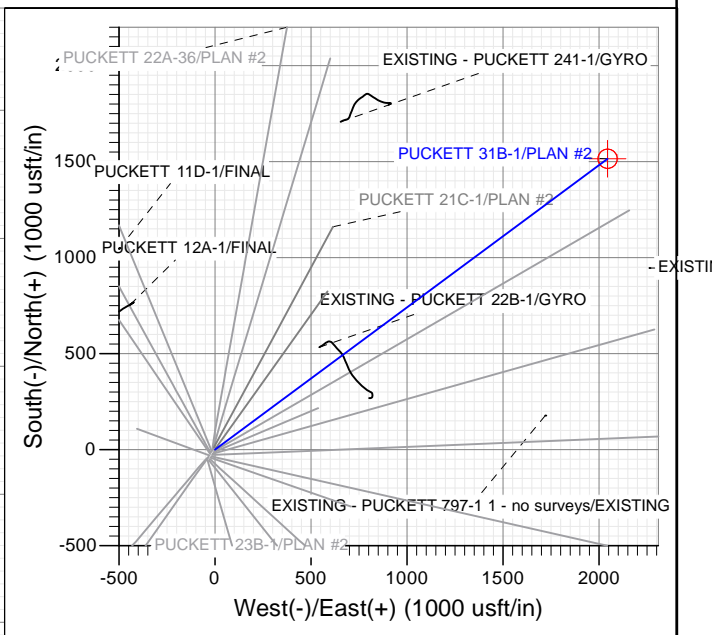
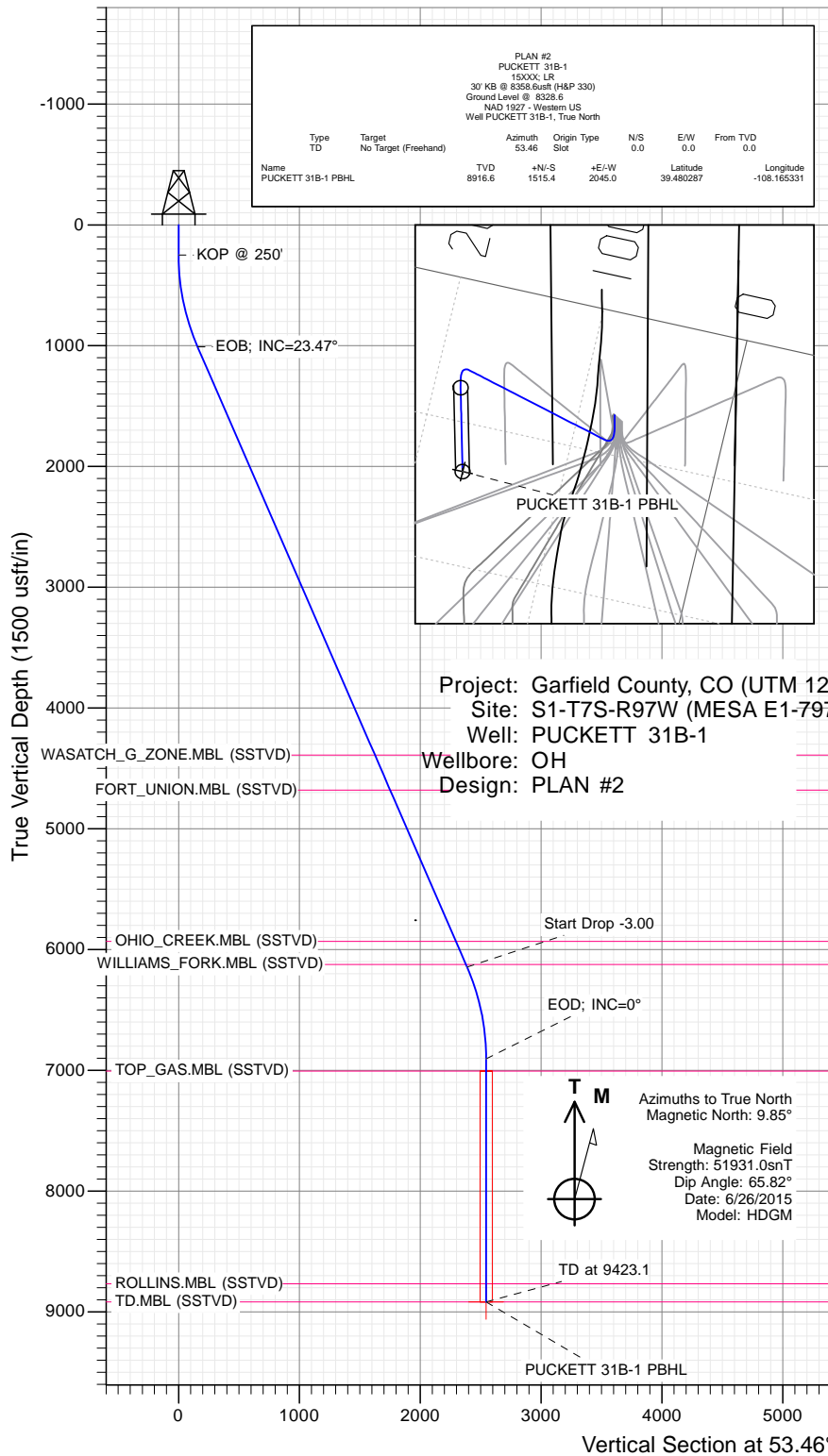




SECTION DETAILS

Sec	MD	Inc	Azi	TVD	+N/-S	+E/-W	Dleg	TFace	Vsect	Target	Annotation
1	0.0	0.00	0.00	0.0	0.0	0.0	0.00	0.00	0.0		KOP @ 250'
2	250.0	0.00	0.00	250.0	0.0	0.0	0.00	0.00	0.0		EOB; INC=23.47°
3	1032.3	23.47	53.46	1010.6	94.1	126.9	3.00	53.46	158.0		Start Drop -3.00
4	6629.7	23.47	53.46	6145.0	1421.3	1918.0	0.00	0.00	2387.2		EOD; INC=0°
5	7412.1	0.00	0.00	6905.6	1515.4	2045.0	3.00	180.00	2545.2	PUCKETT 31B-1 PBHL	TD at 9423.1
6	9423.1	0.00	0.00	8916.6	1515.4	2045.0	0.00	0.00	2545.2		



WELL DETAILS: PUCKETT 31B-1

+N/-S	+E/-W	Northing	Ground Level:	8328.6	Latitude	Longitude
0.0	0.0	14347815.90	Easting	2438341.50	39.476128	-108.172573



Planning Report

Database:	USA EDM 5000 Multi Users DB	Local Co-ordinate Reference:	Well PUCKETT 31B-1
Company:	Caerus Oil & Gas	TVD Reference:	30' KB @ 8358.6usft (H&P 330)
Project:	Garfield County, CO (UTM 12N)	MD Reference:	30' KB @ 8358.6usft (H&P 330)
Site:	S1-T7S-R97W (MESA E1-797)	North Reference:	True
Well:	PUCKETT 31B-1	Survey Calculation Method:	Minimum Curvature
Wellbore:	OH		
Design:	PLAN #2		

Project	Garfield County, CO (UTM 12N)		
Map System:	Universal Transverse Mercator (US Survey Feet)	System Datum:	Mean Sea Level
Geo Datum:	NAD 1927 - Western US		
Map Zone:	Zone 12N (114 W to 108 W)		

Site		S1-T7S-R97W (MESA E1-797)			
Site Position:		Northing:	14,347,813.50 usft	Latitude:	39.476123
From:	Map	Easting:	2,438,328.90 usft	Longitude:	-108.172618
Position Uncertainty:	0.0 usft	Slot Radius:	13-3/16 "	Grid Convergence:	1.80 °

Well	PUCKETT 31B-1					
Well Position	+N/-S	0.0 usft	Northing:	14,347,815.90 usft	Latitude:	39.476128
	+E/-W	0.0 usft	Easting:	2,438,341.50 usft	Longitude:	-108.172573
Position Uncertainty		0.0 usft	Wellhead Elevation:	0.0 usft	Ground Level:	8,328.6 usft

Wellbore	OH				
Magnetics	Model Name	Sample Date	Declination (°)	Dip Angle (°)	Field Strength (nT)
	HDGM	6/26/2015	9.85	65.82	51,931

Design	PLAN #2				
Audit Notes:					
Version:	Phase:	PLAN	Tie On Depth:	0.0	
Vertical Section:	Depth From (TVD) (usft)	+N/-S (usft)	+E/-W (usft)	Direction (°)	
	0.0	0.0	0.0	53.46	

Plan Sections										
Measured Depth (usft)	Inclination (°)	Azimuth (°)	Vertical Depth (usft)	+N/-S (usft)	+E/-W (usft)	Dogleg Rate (°/100usft)	Build Rate (°/100usft)	Turn Rate (°/100usft)	TFO (°)	Target
0.0	0.00	0.00	0.0	0.0	0.0	0.00	0.00	0.00	0.00	
250.0	0.00	0.00	250.0	0.0	0.0	0.00	0.00	0.00	0.00	
1,032.3	23.47	53.46	1,010.6	94.1	126.9	3.00	3.00	0.00	53.46	
6,629.7	23.47	53.46	6,145.0	1,421.3	1,918.0	0.00	0.00	0.00	0.00	
7,412.1	0.00	0.00	6,905.6	1,515.4	2,045.0	3.00	-3.00	0.00	180.00	
9,423.1	0.00	0.00	8,916.6	1,515.4	2,045.0	0.00	0.00	0.00	0.00	PUCKETT 31B-1 PB+

Planning Report

Database:	USA EDM 5000 Multi Users DB	Local Co-ordinate Reference:	Well PUCKETT 31B-1
Company:	Caerus Oil & Gas	TVD Reference:	30' KB @ 8358.6usft (H&P 330)
Project:	Garfield County, CO (UTM 12N)	MD Reference:	30' KB @ 8358.6usft (H&P 330)
Site:	S1-T7S-R97W (MESA E1-797)	North Reference:	True
Well:	PUCKETT 31B-1	Survey Calculation Method:	Minimum Curvature
Wellbore:	OH		
Design:	PLAN #2		

Planned Survey									
Measured Depth (usft)	Inclination (°)	Azimuth (°)	Vertical Depth (usft)	+N/-S (usft)	+E/-W (usft)	Vertical Section (usft)	Dogleg Rate (°/100usft)	Build Rate (°/100u)	Comments / Formations
0.0	0.00	0.00	0.0	0.0	0.0	0.0	0.00	0.00	
100.0	0.00	0.00	100.0	0.0	0.0	0.0	0.00	0.00	
200.0	0.00	0.00	200.0	0.0	0.0	0.0	0.00	0.00	
250.0	0.00	0.00	250.0	0.0	0.0	0.0	0.00	0.00	KOP @ 250'
300.0	1.50	53.46	300.0	0.4	0.5	0.7	3.00	3.00	
400.0	4.50	53.46	399.8	3.5	4.7	5.9	3.00	3.00	
500.0	7.50	53.46	499.3	9.7	13.1	16.3	3.00	3.00	
600.0	10.50	53.46	598.0	19.0	25.7	32.0	3.00	3.00	
700.0	13.50	53.46	695.8	31.4	42.4	52.8	3.00	3.00	
800.0	16.50	53.46	792.4	46.8	63.2	78.6	3.00	3.00	
900.0	19.50	53.46	887.5	65.2	88.0	109.5	3.00	3.00	
1,000.0	22.50	53.46	980.9	86.6	116.8	145.4	3.00	3.00	
1,032.3	23.47	53.46	1,010.6	94.1	126.9	158.0	3.00	3.00	EOB; INC=23.47°
1,100.0	23.47	53.46	1,072.7	110.1	148.6	185.0	0.00	0.00	
1,200.0	23.47	53.46	1,164.4	133.8	180.6	224.8	0.00	0.00	
1,300.0	23.47	53.46	1,256.2	157.5	212.6	264.6	0.00	0.00	
1,400.0	23.47	53.46	1,347.9	181.3	244.6	304.4	0.00	0.00	
1,500.0	23.47	53.46	1,439.6	205.0	276.6	344.3	0.00	0.00	
1,600.0	23.47	53.46	1,531.3	228.7	308.6	384.1	0.00	0.00	
1,700.0	23.47	53.46	1,623.1	252.4	340.6	423.9	0.00	0.00	
1,800.0	23.47	53.46	1,714.8	276.1	372.6	463.7	0.00	0.00	
1,900.0	23.47	53.46	1,806.5	299.8	404.6	503.6	0.00	0.00	
2,000.0	23.47	53.46	1,898.3	323.5	436.6	543.4	0.00	0.00	
2,100.0	23.47	53.46	1,990.0	347.2	468.6	583.2	0.00	0.00	
2,200.0	23.47	53.46	2,081.7	370.9	500.6	623.0	0.00	0.00	
2,300.0	23.47	53.46	2,173.4	394.7	532.6	662.9	0.00	0.00	
2,400.0	23.47	53.46	2,265.2	418.4	564.6	702.7	0.00	0.00	
2,500.0	23.47	53.46	2,356.9	442.1	596.6	742.5	0.00	0.00	
2,600.0	23.47	53.46	2,448.6	465.8	628.6	782.3	0.00	0.00	
2,700.0	23.47	53.46	2,540.3	489.5	660.6	822.2	0.00	0.00	
2,800.0	23.47	53.46	2,632.1	513.2	692.6	862.0	0.00	0.00	
2,900.0	23.47	53.46	2,723.8	536.9	724.6	901.8	0.00	0.00	
3,000.0	23.47	53.46	2,815.5	560.6	756.6	941.7	0.00	0.00	
3,100.0	23.47	53.46	2,907.2	584.3	788.6	981.5	0.00	0.00	
3,200.0	23.47	53.46	2,999.0	608.1	820.6	1,021.3	0.00	0.00	
3,300.0	23.47	53.46	3,090.7	631.8	852.6	1,061.1	0.00	0.00	
3,400.0	23.47	53.46	3,182.4	655.5	884.6	1,101.0	0.00	0.00	
3,500.0	23.47	53.46	3,274.2	679.2	916.6	1,140.8	0.00	0.00	
3,600.0	23.47	53.46	3,365.9	702.9	948.6	1,180.6	0.00	0.00	
3,700.0	23.47	53.46	3,457.6	726.6	980.6	1,220.4	0.00	0.00	
3,800.0	23.47	53.46	3,549.3	750.3	1,012.6	1,260.3	0.00	0.00	
3,900.0	23.47	53.46	3,641.1	774.0	1,044.6	1,300.1	0.00	0.00	
4,000.0	23.47	53.46	3,732.8	797.7	1,076.6	1,339.9	0.00	0.00	
4,100.0	23.47	53.46	3,824.5	821.5	1,108.6	1,379.7	0.00	0.00	
4,200.0	23.47	53.46	3,916.2	845.2	1,140.5	1,419.6	0.00	0.00	
4,300.0	23.47	53.46	4,008.0	868.9	1,172.5	1,459.4	0.00	0.00	
4,400.0	23.47	53.46	4,099.7	892.6	1,204.5	1,499.2	0.00	0.00	
4,500.0	23.47	53.46	4,191.4	916.3	1,236.5	1,539.0	0.00	0.00	
4,600.0	23.47	53.46	4,283.2	940.0	1,268.5	1,578.9	0.00	0.00	
4,700.0	23.47	53.46	4,374.9	963.7	1,300.5	1,618.7	0.00	0.00	
4,716.0	23.47	53.46	4,389.6	967.5	1,305.7	1,625.1	0.00	0.00	WASATCH_G_ZONE.MBL (SSTVD)
4,800.0	23.47	53.46	4,466.6	987.4	1,332.5	1,658.5	0.00	0.00	

Planning Report

Database:	USA EDM 5000 Multi Users DB	Local Co-ordinate Reference:	Well PUCKETT 31B-1
Company:	Caerus Oil & Gas	TVD Reference:	30' KB @ 8358.6usft (H&P 330)
Project:	Garfield County, CO (UTM 12N)	MD Reference:	30' KB @ 8358.6usft (H&P 330)
Site:	S1-T7S-R97W (MESA E1-797)	North Reference:	True
Well:	PUCKETT 31B-1	Survey Calculation Method:	Minimum Curvature
Wellbore:	OH		
Design:	PLAN #2		

Planned Survey									
Measured Depth (usft)	Inclination (°)	Azimuth (°)	Vertical Depth (usft)	+N/-S (usft)	+E/-W (usft)	Vertical Section (usft)	Dogleg Rate (°/100usft)	Build Rate (°/100u)	Comments / Formations
4,900.0	23.47	53.46	4,558.3	1,011.2	1,364.5	1,698.3	0.00	0.00	
5,000.0	23.47	53.46	4,650.1	1,034.9	1,396.5	1,738.2	0.00	0.00	
5,031.1	23.47	53.46	4,678.6	1,042.2	1,406.5	1,750.6	0.00	0.00	FORT_UNION.MBL (SSTVD)
5,100.0	23.47	53.46	4,741.8	1,058.6	1,428.5	1,778.0	0.00	0.00	
5,200.0	23.47	53.46	4,833.5	1,082.3	1,460.5	1,817.8	0.00	0.00	
5,300.0	23.47	53.46	4,925.2	1,106.0	1,492.5	1,857.7	0.00	0.00	
5,400.0	23.47	53.46	5,017.0	1,129.7	1,524.5	1,897.5	0.00	0.00	
5,500.0	23.47	53.46	5,108.7	1,153.4	1,556.5	1,937.3	0.00	0.00	
5,600.0	23.47	53.46	5,200.4	1,177.1	1,588.5	1,977.1	0.00	0.00	
5,700.0	23.47	53.46	5,292.2	1,200.8	1,620.5	2,017.0	0.00	0.00	
5,800.0	23.47	53.46	5,383.9	1,224.6	1,652.5	2,056.8	0.00	0.00	
5,900.0	23.47	53.46	5,475.6	1,248.3	1,684.5	2,096.6	0.00	0.00	
6,000.0	23.47	53.46	5,567.3	1,272.0	1,716.5	2,136.4	0.00	0.00	
6,100.0	23.47	53.46	5,659.1	1,295.7	1,748.5	2,176.3	0.00	0.00	
6,200.0	23.47	53.46	5,750.8	1,319.4	1,780.5	2,216.1	0.00	0.00	
6,300.0	23.47	53.46	5,842.5	1,343.1	1,812.5	2,255.9	0.00	0.00	
6,397.1	23.47	53.46	5,931.6	1,366.1	1,843.6	2,294.6	0.00	0.00	OHIO_CREEK.MBL (SSTVD)
6,400.0	23.47	53.46	5,934.2	1,366.8	1,844.5	2,295.7	0.00	0.00	
6,500.0	23.47	53.46	6,026.0	1,390.5	1,876.5	2,335.6	0.00	0.00	
6,600.0	23.47	53.46	6,117.7	1,414.2	1,908.5	2,375.4	0.00	0.00	
6,606.4	23.47	53.46	6,123.6	1,415.8	1,910.6	2,378.0	0.00	0.00	WILLIAMS_FORK.MBL (SSTVD)
6,629.7	23.47	53.46	6,145.0	1,421.3	1,918.0	2,387.2	0.00	0.00	Start Drop -3.00
6,700.0	21.36	53.46	6,209.9	1,437.2	1,939.5	2,414.0	3.00	-3.00	
6,800.0	18.36	53.46	6,304.0	1,457.5	1,966.8	2,448.0	3.00	-3.00	
6,900.0	15.36	53.46	6,399.7	1,474.7	1,990.1	2,477.0	3.00	-3.00	
7,000.0	12.36	53.46	6,496.7	1,489.0	2,009.4	2,501.0	3.00	-3.00	
7,100.0	9.36	53.46	6,594.9	1,500.2	2,024.5	2,519.8	3.00	-3.00	
7,200.0	6.36	53.46	6,694.0	1,508.4	2,035.5	2,533.5	3.00	-3.00	
7,300.0	3.36	53.46	6,793.6	1,513.4	2,042.3	2,541.9	3.00	-3.00	
7,400.0	0.36	53.46	6,893.5	1,515.3	2,044.9	2,545.2	3.00	-3.00	
7,412.1	0.00	0.00	6,905.6	1,515.4	2,045.0	2,545.2	3.00	-3.00	EOD; INC=0°
7,500.0	0.00	0.00	6,993.5	1,515.4	2,045.0	2,545.2	0.00	0.00	
7,512.1	0.00	0.00	7,005.6	1,515.4	2,045.0	2,545.2	0.00	0.00	TOP_GAS.MBL (SSTVD)
7,600.0	0.00	0.00	7,093.5	1,515.4	2,045.0	2,545.2	0.00	0.00	
7,700.0	0.00	0.00	7,193.5	1,515.4	2,045.0	2,545.2	0.00	0.00	
7,800.0	0.00	0.00	7,293.5	1,515.4	2,045.0	2,545.2	0.00	0.00	
7,900.0	0.00	0.00	7,393.5	1,515.4	2,045.0	2,545.2	0.00	0.00	
8,000.0	0.00	0.00	7,493.5	1,515.4	2,045.0	2,545.2	0.00	0.00	
8,100.0	0.00	0.00	7,593.5	1,515.4	2,045.0	2,545.2	0.00	0.00	
8,200.0	0.00	0.00	7,693.5	1,515.4	2,045.0	2,545.2	0.00	0.00	
8,300.0	0.00	0.00	7,793.5	1,515.4	2,045.0	2,545.2	0.00	0.00	
8,400.0	0.00	0.00	7,893.5	1,515.4	2,045.0	2,545.2	0.00	0.00	
8,500.0	0.00	0.00	7,993.5	1,515.4	2,045.0	2,545.2	0.00	0.00	
8,600.0	0.00	0.00	8,093.5	1,515.4	2,045.0	2,545.2	0.00	0.00	
8,700.0	0.00	0.00	8,193.5	1,515.4	2,045.0	2,545.2	0.00	0.00	
8,800.0	0.00	0.00	8,293.5	1,515.4	2,045.0	2,545.2	0.00	0.00	
8,900.0	0.00	0.00	8,393.5	1,515.4	2,045.0	2,545.2	0.00	0.00	
9,000.0	0.00	0.00	8,493.5	1,515.4	2,045.0	2,545.2	0.00	0.00	
9,100.0	0.00	0.00	8,593.5	1,515.4	2,045.0	2,545.2	0.00	0.00	
9,200.0	0.00	0.00	8,693.5	1,515.4	2,045.0	2,545.2	0.00	0.00	
9,273.1	0.00	0.00	8,766.6	1,515.4	2,045.0	2,545.2	0.00	0.00	ROLLINS.MBL (SSTVD)
9,300.0	0.00	0.00	8,793.5	1,515.4	2,045.0	2,545.2	0.00	0.00	

Planning Report

Database:	USA EDM 5000 Multi Users DB	Local Co-ordinate Reference:	Well PUCKETT 31B-1
Company:	Caerus Oil & Gas	TVD Reference:	30' KB @ 8358.6usft (H&P 330)
Project:	Garfield County, CO (UTM 12N)	MD Reference:	30' KB @ 8358.6usft (H&P 330)
Site:	S1-T7S-R97W (MESA E1-797)	North Reference:	True
Well:	PUCKETT 31B-1	Survey Calculation Method:	Minimum Curvature
Wellbore:	OH		
Design:	PLAN #2		

Planned Survey									
Measured Depth (usft)	Inclination (°)	Azimuth (°)	Vertical Depth (usft)	+N/-S (usft)	+E/-W (usft)	Vertical Section (usft)	Dogleg Rate (°/100usft)	Build Rate (°/100u)	Comments / Formations
9,400.0	0.00	0.00	8,893.5	1,515.4	2,045.0	2,545.2	0.00	0.00	
9,423.1	0.00	0.00	8,916.6	1,515.4	2,045.0	2,545.2	0.00	0.00	TD at 9423.1 - TD.MBL (SSTVD) - PUCKETT 3

Targets									
Target Name									
- hit/miss target	Dip Angle (°)	Dip Dir. (°)	TVD (usft)	+N/-S (usft)	+E/-W (usft)	Northing (usft)	Easting (usft)	Latitude	Longitude
- Shape									
PUCKETT 31B-1 PBHL	0.00	0.00	8,916.6	1,515.4	2,045.0	14,349,394.70	2,440,337.90	39.480287	-108.165331
- plan hits target center									
- Circle (radius 50.0)									

Formations					
Measured Depth (usft)	Vertical Depth (usft)	Name	Lithology	Dip (°)	Dip Direction (°)
4,716.0	4,389.6	WASATCH_G_ZONE.MBL (SSTVD)		0.00	
5,031.1	4,678.6	FORT_UNION.MBL (SSTVD)		0.00	
6,397.1	5,931.6	OHIO_CREEK.MBL (SSTVD)		0.00	
6,606.4	6,123.6	WILLIAMS_FORK.MBL (SSTVD)		0.00	
7,512.1	7,005.6	TOP_GAS.MBL (SSTVD)		0.00	
9,273.1	8,766.6	ROLLINS.MBL (SSTVD)		0.00	
9,423.1	8,916.6	TD.MBL (SSTVD)		0.00	

Plan Annotations				
Measured Depth (usft)	Vertical Depth (usft)	Local Coordinates		Comment
		+N/-S (usft)	+E/-W (usft)	
250.0	250.0	0.0	0.0	KOP @ 250'
1,032.3	1,010.6	94.1	126.9	EOB; INC=23.47°
6,629.7	6,145.0	1,421.3	1,918.0	Start Drop -3.00
7,412.1	6,905.6	1,515.4	2,045.0	EOD; INC=0°
9,423.1	8,916.6	1,515.4	2,045.0	TD at 9423.1