



LEGEND

- ◆ ~ FOUND ORIGINAL STONE
- ⊕ ~ FOUND GLO BRASS CAP ON STEEL POST
- ⊗ ~ FOUND MONUMENT SET BY OTHERS AS NOTED
- ~ SET MONUMENT AS NOTED
- ~ WELL HEAD
- (M) ~ MEASURED IN FIELD
- L ~ 90° SYMBOL
- WC ~ WITNESS CORNER

BASIS OF BEARING:

THE LINE FROM THE N 1/4 CORNER TO THE NE CORNER OF SECTION 19, TOWNSHIP 11 SOUTH, RANGE 89 WEST, 6TH P.M., WAS ASSUMED TO BEAR N. 89°05'46" E. AS MONUMENTED AND SHOWN HEREON.

CERTIFICATE OF SURVEY:

I, David G. Nicewicz, a Registered Land Surveyor in the State of Colorado, do hereby certify that the survey represented by this plat was made under my direction and supervision, and that this plat accurately represents this survey.

David G. Nicewicz P.L.S. No. 24963
(for and on behalf of AECOM)



GAS WELL LOCATION PLAT

HL 11-89-19 #2

SURFACE LOCATION

Located in the NW 1/4 Section 19, T. 11 S., R. 89 W.,
6th P.M., Gunnison County, Colorado

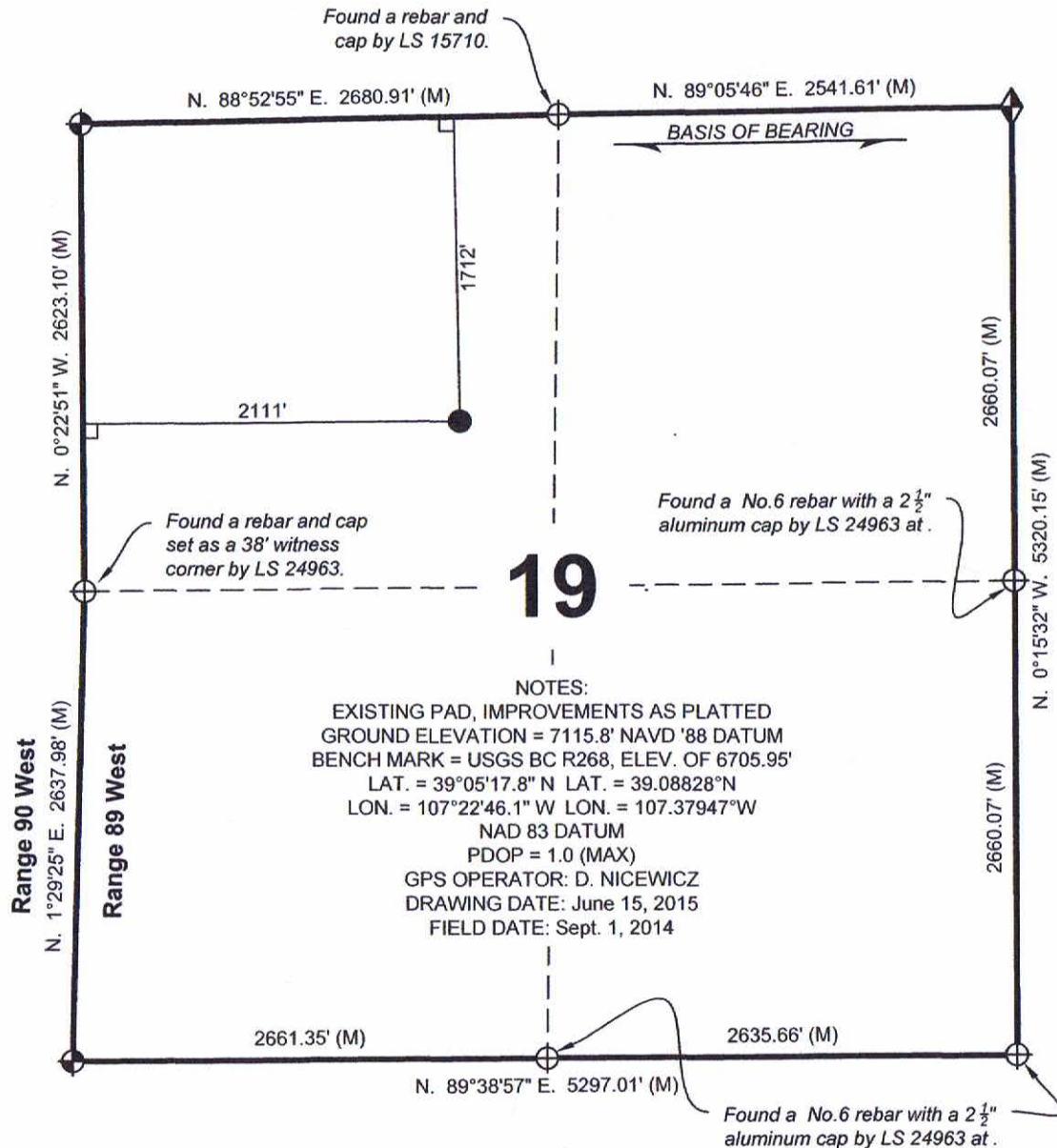
SURVEYED BY: DGN
DWG DATE: 06/15/2015
DRAFTED BY: MLD
SCALE: 1" = 1000'

David G. Nicewicz, PLS

cell: (720) 456-1104
david.nicewicz@aecom.com
AECOM
804 Colorado Ave, Suite 201
Glenwood Springs Co 81610

JOB NO.: 22243490.12000

SHEET NO. 1 of 1



AECOM OF GLENWOOD SPRINGS COLORADO, has in accordance with a request from ERIC SANFORD, for SG INTERESTS I, LTD, determined the location of **HL 11-89-19 #2 SURFACE LOCATION** to be **1712 FNL & 2111 FWL** Section 19, Township 11 South, Range 89 West, of the Sixth Principal Meridian, Gunnison County, Colorado.



LEGEND

- ◆ ~ FOUND ORIGINAL STONE
- ⊙ ~ FOUND GLO BRASS CAP ON STEEL POST
- ⊕ ~ FOUND MONUMENT SET BY OTHERS AS NOTED
- ~ SET MONUMENT AS NOTED
- ~ WELL HEAD
- (M) ~ MEASURED IN FIELD
- L ~ 90° SYMBOL
- WC ~ WITNESS CORNER

BASIS OF BEARING:

THE LINE FROM THE N 1/4 CORNER TO THE NE CORNER OF SECTION 19, TOWNSHIP 11 SOUTH, RANGE 89 WEST, 6TH P.M., WAS ASSUMED TO BEAR N. 89°05'46" E. AS MONUMENTED AND SHOWN HEREON.

CERTIFICATE OF SURVEY:

I, David G. Nicewicz, a Registered Land Surveyor in the State of Colorado, do hereby certify that the survey represented by this plat was made under my direction and supervision, and that this plat accurately represents this survey.

David G. Nicewicz P.L.S. No. 24963
(for and on behalf of AECOM)



GAS WELL LOCATION PLAT

**HL 11-89-19 #2
BOTTOM HOLE LOCATION**
Located in the NW 1/4 Section 19, T. 11 S., R. 89 W.,
6th P.M., Gunnison County, Colorado

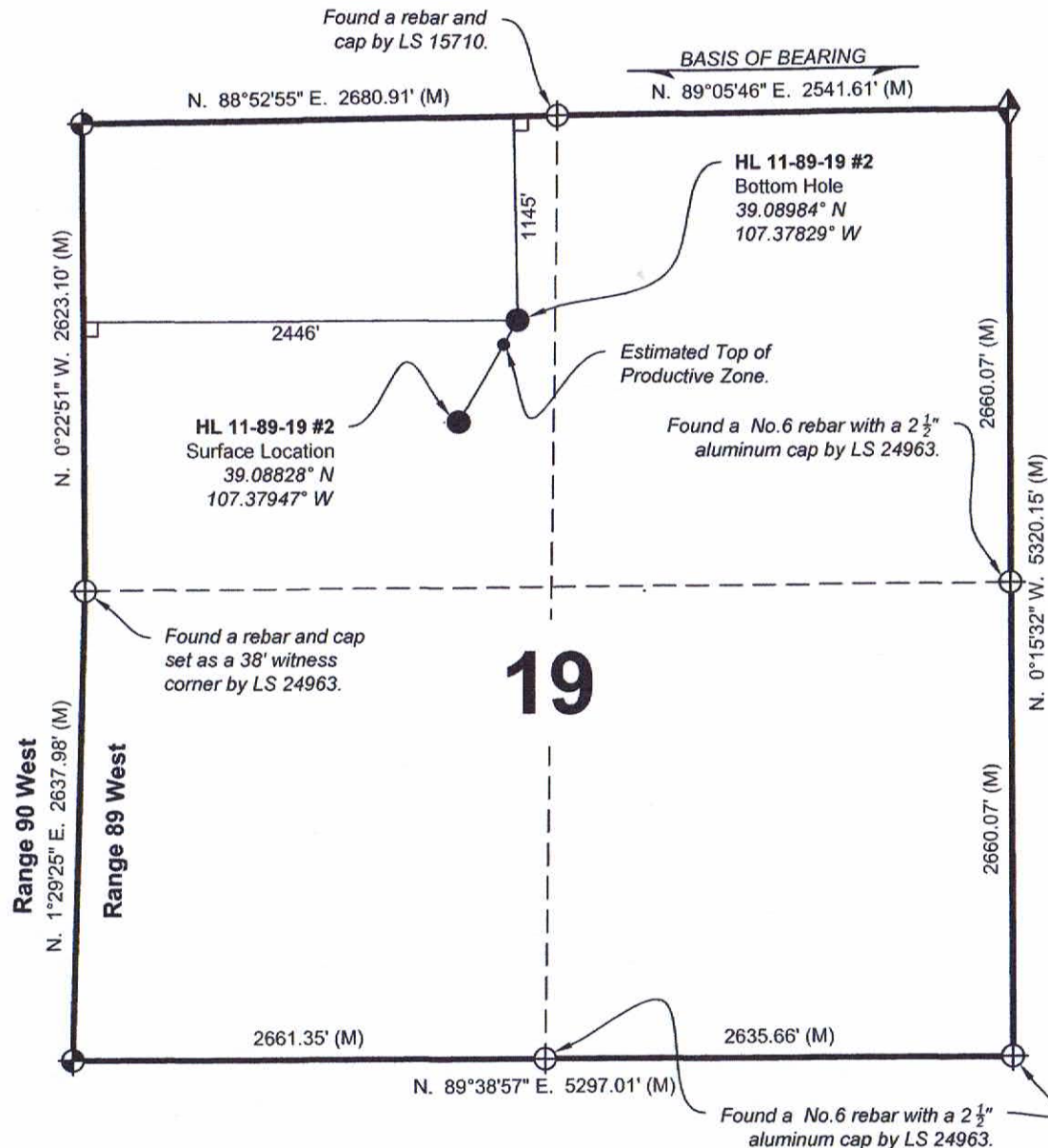
SURVEYED BY:
DGN
DWG DATE:
06/16/2015
DRAFTED BY:
MLD
SCALE:
1" = 1000'

David G. Nicewicz, PLS

cell: (720) 456-1104
david.nicewicz@aecom.com
AECOM
804 Colorado Ave, Suite 201
Glenwood Springs Co 81610

JOB NO.: 22243490.12000

SHEET NO. 1 of 1



AECOM OF GLENWOOD SPRINGS COLORADO, has in accordance with a request from ERIC SANFORD, for SG INTERESTS I, LTD, determined the location of **HL 11-89-19 #2 BOTTOM HOLE LOCATION** to be 1145 FNL & 2446 FWL Section 19, Township 11 South, Range 89 West, of the Sixth Principal Meridian, Gunnison County, Colorado.