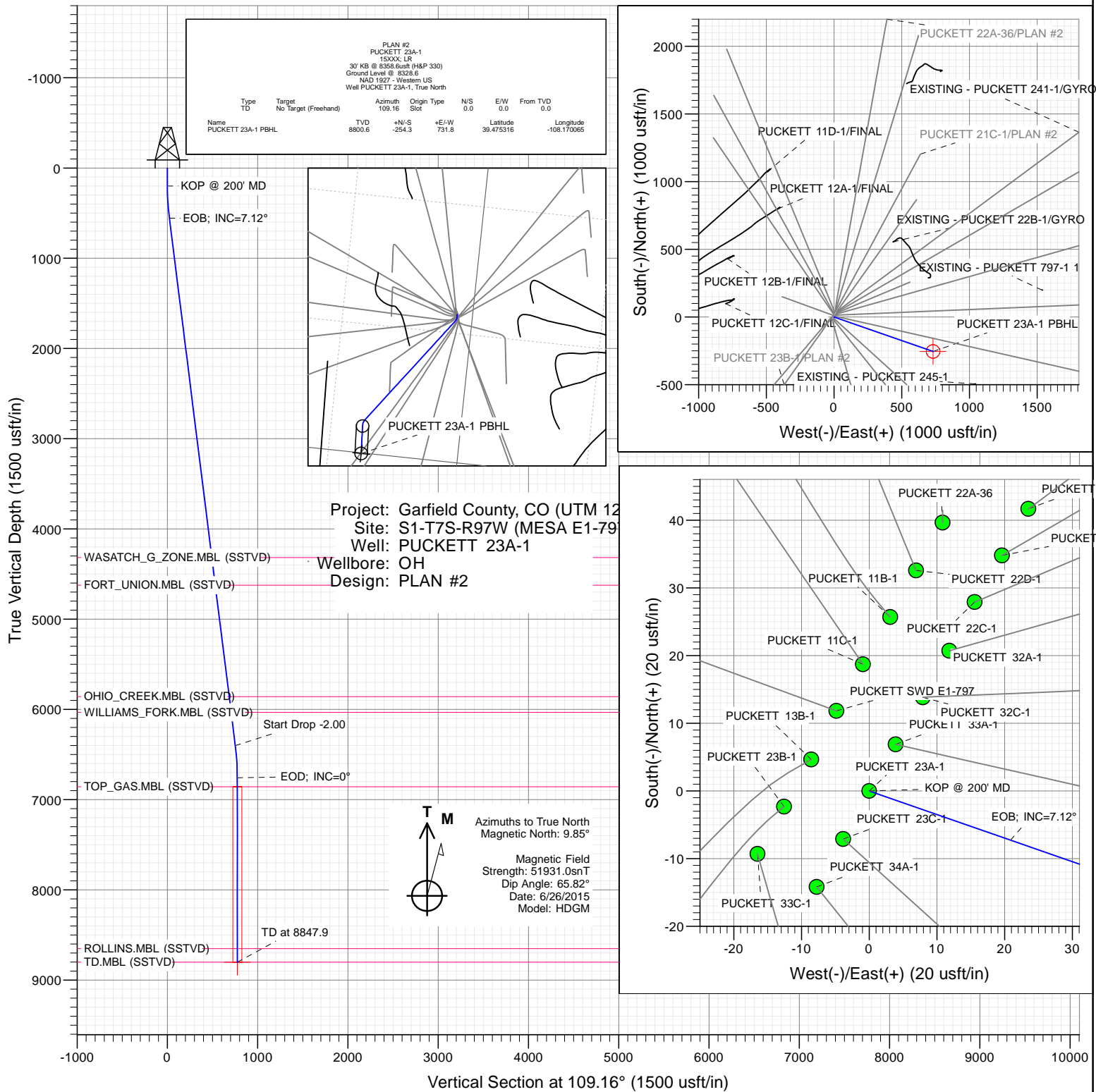




## SECTION DETAILS

Sec	MD	Inc	Azi	TVD	+N/-S	+E/-W	Dleg	TFace	VSect	Target	Annotation
1	0.0	0.00	0.00	0.0	0.0	0.0	0.00	0.00	0.0		KOP @ 200' MD
2	200.0	0.00	0.00	200.0	0.0	0.0	0.00	0.00	0.0		EOB; INC=7.12°
3	556.1	7.12	109.16	555.2	-7.3	20.9	2.00	109.16	22.1		Start Drop -2.00
4	6447.8	7.12	109.16	6401.4	-247.0	710.9	0.00	0.00	752.6		EOD; INC=0°
5	6803.9	0.00	0.00	6756.6	-254.3	731.8	2.00	180.00	774.7		TD at 8847.9
6	8847.9	0.00	0.00	8800.6	-254.3	731.8	0.00	0.00	774.7	PUCKETT 23A-1 PBHL	



## WELL DETAILS: PUCKETT 23A-1

+N/-S	+E/-W	Northing	Ground Level:	8328.6	Latitude	Longitude
0.0	0.0	14347773.50	Easting	2438319.30	39.476014	-108.172656



## Planning Report

<b>Database:</b>	USA EDM 5000 Multi Users DB	<b>Local Co-ordinate Reference:</b>	Well PUCKETT 23A-1
<b>Company:</b>	Caerus Oil & Gas	<b>TVD Reference:</b>	30' KB @ 8358.6usft (H&P 330)
<b>Project:</b>	Garfield County, CO (UTM 12N)	<b>MD Reference:</b>	30' KB @ 8358.6usft (H&P 330)
<b>Site:</b>	S1-T7S-R97W (MESA E1-797)	<b>North Reference:</b>	True
<b>Well:</b>	PUCKETT 23A-1	<b>Survey Calculation Method:</b>	Minimum Curvature
<b>Wellbore:</b>	OH		
<b>Design:</b>	PLAN #2		

<b>Project</b>	Garfield County, CO (UTM 12N)		
<b>Map System:</b>	Universal Transverse Mercator (US Survey Feet)	<b>System Datum:</b>	Mean Sea Level
<b>Geo Datum:</b>	NAD 1927 - Western US		
<b>Map Zone:</b>	Zone 12N (114 W to 108 W)		

Site		S1-T7S-R97W (MESA E1-797)			
Site Position:		Northing:	14,347,813.50 usft	Latitude:	39.476123
From:	Map	Easting:	2,438,328.90 usft	Longitude:	-108.172618
Position Uncertainty:	0.0 usft	Slot Radius:	13-3/16 "	Grid Convergence:	1.80 °

Well	PUCKETT 23A-1					
Well Position	+N/-S	0.0 usft	Northing:	14,347,773.50 usft	Latitude:	39.476014
	+E/-W	0.0 usft	Easting:	2,438,319.30 usft	Longitude:	-108.172656
Position Uncertainty		0.0 usft	Wellhead Elevation:	0.0 usft	Ground Level:	8,328.6 usft

<b>Wellbore</b>	OH				
<b>Magnetics</b>	<b>Model Name</b>	<b>Sample Date</b>	<b>Declination (°)</b>	<b>Dip Angle (°)</b>	<b>Field Strength (nT)</b>
	HDGM	6/26/2015	9.85	65.82	51,931

<b>Design</b>	PLAN #2			
<b>Audit Notes:</b>				
<b>Version:</b>	<b>Phase:</b>	PLAN	<b>Tie On Depth:</b>	0.0
<b>Vertical Section:</b>	<b>Depth From (TVD) (usft)</b>	<b>+N/-S (usft)</b>	<b>+E/-W (usft)</b>	<b>Direction (°)</b>
	0.0	0.0	0.0	109.16

<b>Plan Sections</b>										
Measured Depth (usft)	Inclination (°)	Azimuth (°)	Vertical Depth (usft)	+N/-S (usft)	+E/-W (usft)	Dogleg Rate (°/100usft)	Build Rate (°/100usft)	Turn Rate (°/100usft)	TFO (°)	Target
0.0	0.00	0.00	0.0	0.0	0.0	0.00	0.00	0.00	0.00	
200.0	0.00	0.00	200.0	0.0	0.0	0.00	0.00	0.00	0.00	
556.1	7.12	109.16	555.2	-7.3	20.9	2.00	2.00	0.00	109.16	
6,447.8	7.12	109.16	6,401.4	-247.0	710.9	0.00	0.00	0.00	0.00	
6,803.9	0.00	0.00	6,756.6	-254.3	731.8	2.00	-2.00	0.00	180.00	
8,847.9	0.00	0.00	8,800.6	-254.3	731.8	0.00	0.00	0.00	0.00	PUCKETT 23A-1 PBH

# Planning Report

<b>Database:</b>	USA EDM 5000 Multi Users DB	<b>Local Co-ordinate Reference:</b>	Well PUCKETT 23A-1
<b>Company:</b>	Caerus Oil & Gas	<b>TVD Reference:</b>	30' KB @ 8358.6usft (H&P 330)
<b>Project:</b>	Garfield County, CO (UTM 12N)	<b>MD Reference:</b>	30' KB @ 8358.6usft (H&P 330)
<b>Site:</b>	S1-T7S-R97W (MESA E1-797)	<b>North Reference:</b>	True
<b>Well:</b>	PUCKETT 23A-1	<b>Survey Calculation Method:</b>	Minimum Curvature
<b>Wellbore:</b>	OH		
<b>Design:</b>	PLAN #2		

Planned Survey									
Measured Depth (usft)	Inclination (°)	Azimuth (°)	Vertical Depth (usft)	+N/-S (usft)	+E/-W (usft)	Vertical Section (usft)	Dogleg Rate (°/100usft)	Build Rate (°/100u)	Comments / Formations
0.0	0.00	0.00	0.0	0.0	0.0	0.0	0.00	0.00	
100.0	0.00	0.00	100.0	0.0	0.0	0.0	0.00	0.00	
200.0	0.00	0.00	200.0	0.0	0.0	0.0	0.00	0.00	KOP @ 200' MD
300.0	2.00	109.16	300.0	-0.6	1.6	1.7	2.00	2.00	
400.0	4.00	109.16	399.8	-2.3	6.6	7.0	2.00	2.00	
500.0	6.00	109.16	499.5	-5.2	14.8	15.7	2.00	2.00	
556.1	7.12	109.16	555.2	-7.3	20.9	22.1	2.00	2.00	EOB; INC=7.12°
600.0	7.12	109.16	598.7	-9.0	26.0	27.5	0.00	0.00	
700.0	7.12	109.16	698.0	-13.1	37.7	39.9	0.00	0.00	
800.0	7.12	109.16	797.2	-17.2	49.4	52.3	0.00	0.00	
900.0	7.12	109.16	896.4	-21.3	61.2	64.7	0.00	0.00	
1,000.0	7.12	109.16	995.7	-25.3	72.9	77.1	0.00	0.00	
1,100.0	7.12	109.16	1,094.9	-29.4	84.6	89.5	0.00	0.00	
1,200.0	7.12	109.16	1,194.1	-33.5	96.3	101.9	0.00	0.00	
1,300.0	7.12	109.16	1,293.3	-37.5	108.0	114.3	0.00	0.00	
1,400.0	7.12	109.16	1,392.6	-41.6	119.7	126.7	0.00	0.00	
1,500.0	7.12	109.16	1,491.8	-45.7	131.4	139.1	0.00	0.00	
1,600.0	7.12	109.16	1,591.0	-49.7	143.1	151.5	0.00	0.00	
1,700.0	7.12	109.16	1,690.3	-53.8	154.8	163.9	0.00	0.00	
1,800.0	7.12	109.16	1,789.5	-57.9	166.6	176.3	0.00	0.00	
1,900.0	7.12	109.16	1,888.7	-61.9	178.3	188.7	0.00	0.00	
2,000.0	7.12	109.16	1,987.9	-66.0	190.0	201.1	0.00	0.00	
2,100.0	7.12	109.16	2,087.2	-70.1	201.7	213.5	0.00	0.00	
2,200.0	7.12	109.16	2,186.4	-74.2	213.4	225.9	0.00	0.00	
2,300.0	7.12	109.16	2,285.6	-78.2	225.1	238.3	0.00	0.00	
2,400.0	7.12	109.16	2,384.9	-82.3	236.8	250.7	0.00	0.00	
2,500.0	7.12	109.16	2,484.1	-86.4	248.5	263.1	0.00	0.00	
2,600.0	7.12	109.16	2,583.3	-90.4	260.3	275.5	0.00	0.00	
2,700.0	7.12	109.16	2,682.5	-94.5	272.0	287.9	0.00	0.00	
2,800.0	7.12	109.16	2,781.8	-98.6	283.7	300.3	0.00	0.00	
2,900.0	7.12	109.16	2,881.0	-102.6	295.4	312.7	0.00	0.00	
3,000.0	7.12	109.16	2,980.2	-106.7	307.1	325.1	0.00	0.00	
3,100.0	7.12	109.16	3,079.5	-110.8	318.8	337.5	0.00	0.00	
3,200.0	7.12	109.16	3,178.7	-114.9	330.5	349.9	0.00	0.00	
3,300.0	7.12	109.16	3,277.9	-118.9	342.2	362.3	0.00	0.00	
3,400.0	7.12	109.16	3,377.1	-123.0	354.0	374.7	0.00	0.00	
3,500.0	7.12	109.16	3,476.4	-127.1	365.7	387.1	0.00	0.00	
3,600.0	7.12	109.16	3,575.6	-131.1	377.4	399.5	0.00	0.00	
3,700.0	7.12	109.16	3,674.8	-135.2	389.1	411.9	0.00	0.00	
3,800.0	7.12	109.16	3,774.1	-139.3	400.8	424.3	0.00	0.00	
3,900.0	7.12	109.16	3,873.3	-143.3	412.5	436.7	0.00	0.00	
4,000.0	7.12	109.16	3,972.5	-147.4	424.2	449.1	0.00	0.00	
4,100.0	7.12	109.16	4,071.7	-151.5	435.9	461.5	0.00	0.00	
4,200.0	7.12	109.16	4,171.0	-155.6	447.6	473.9	0.00	0.00	
4,300.0	7.12	109.16	4,270.2	-159.6	459.4	486.3	0.00	0.00	
4,347.8	7.12	109.16	4,317.6	-161.6	465.0	492.2	0.00	0.00	WASATCH_G_ZONE.MBL (SSTVD)
4,400.0	7.12	109.16	4,369.4	-163.7	471.1	498.7	0.00	0.00	
4,500.0	7.12	109.16	4,468.7	-167.8	482.8	511.1	0.00	0.00	
4,600.0	7.12	109.16	4,567.9	-171.8	494.5	523.5	0.00	0.00	
4,656.2	7.12	109.16	4,623.6	-174.1	501.1	530.5	0.00	0.00	FORT_UNION.MBL (SSTVD)
4,700.0	7.12	109.16	4,667.1	-175.9	506.2	535.9	0.00	0.00	
4,800.0	7.12	109.16	4,766.3	-180.0	517.9	548.3	0.00	0.00	

# Planning Report

<b>Database:</b>	USA EDM 5000 Multi Users DB	<b>Local Co-ordinate Reference:</b>	Well PUCKETT 23A-1
<b>Company:</b>	Caerus Oil & Gas	<b>TVD Reference:</b>	30' KB @ 8358.6usft (H&P 330)
<b>Project:</b>	Garfield County, CO (UTM 12N)	<b>MD Reference:</b>	30' KB @ 8358.6usft (H&P 330)
<b>Site:</b>	S1-T7S-R97W (MESA E1-797)	<b>North Reference:</b>	True
<b>Well:</b>	PUCKETT 23A-1	<b>Survey Calculation Method:</b>	Minimum Curvature
<b>Wellbore:</b>	OH		
<b>Design:</b>	PLAN #2		

Planned Survey									
Measured Depth (usft)	Inclination (°)	Azimuth (°)	Vertical Depth (usft)	+N/-S (usft)	+E/-W (usft)	Vertical Section (usft)	Dogleg Rate (°/100usft)	Build Rate (°/100u)	Comments / Formations
4,900.0	7.12	109.16	4,865.6	-184.0	529.6	560.7	0.00	0.00	
5,000.0	7.12	109.16	4,964.8	-188.1	541.3	573.1	0.00	0.00	
5,100.0	7.12	109.16	5,064.0	-192.2	553.1	585.5	0.00	0.00	
5,200.0	7.12	109.16	5,163.3	-196.3	564.8	597.9	0.00	0.00	
5,300.0	7.12	109.16	5,262.5	-200.3	576.5	610.3	0.00	0.00	
5,400.0	7.12	109.16	5,361.7	-204.4	588.2	622.7	0.00	0.00	
5,500.0	7.12	109.16	5,460.9	-208.5	599.9	635.1	0.00	0.00	
5,600.0	7.12	109.16	5,560.2	-212.5	611.6	647.5	0.00	0.00	
5,700.0	7.12	109.16	5,659.4	-216.6	623.3	659.9	0.00	0.00	
5,800.0	7.12	109.16	5,758.6	-220.7	635.0	672.3	0.00	0.00	
5,899.7	7.12	109.16	5,857.6	-224.7	646.7	684.6	0.00	0.00	OHIO_CREEK.MBL (SSTVD)
5,900.0	7.12	109.16	5,857.8	-224.7	646.7	684.7	0.00	0.00	
6,000.0	7.12	109.16	5,957.1	-228.8	658.5	697.1	0.00	0.00	
6,075.1	7.12	109.16	6,031.6	-231.9	667.3	706.4	0.00	0.00	WILLIAMS_FORK.MBL (SSTVD)
6,100.0	7.12	109.16	6,056.3	-232.9	670.2	709.5	0.00	0.00	
6,200.0	7.12	109.16	6,155.5	-237.0	681.9	721.9	0.00	0.00	
6,300.0	7.12	109.16	6,254.8	-241.0	693.6	734.3	0.00	0.00	
6,400.0	7.12	109.16	6,354.0	-245.1	705.3	746.7	0.00	0.00	
6,447.8	7.12	109.16	6,401.4	-247.0	710.9	752.6	0.00	0.00	Start Drop -2.00
6,500.0	6.08	109.16	6,453.3	-249.0	716.6	758.6	2.00	-2.00	
6,600.0	4.08	109.16	6,552.9	-251.9	724.9	767.5	2.00	-2.00	
6,700.0	2.08	109.16	6,652.7	-253.7	730.0	772.8	2.00	-2.00	
6,800.0	0.08	109.16	6,752.7	-254.3	731.8	774.7	2.00	-2.00	
6,803.9	0.00	0.00	6,756.6	-254.3	731.8	774.7	2.00	-2.00	EOD; INC=0°
6,900.0	0.00	0.00	6,852.7	-254.3	731.8	774.7	0.00	0.00	
6,903.9	0.00	0.00	6,856.6	-254.3	731.8	774.7	0.00	0.00	TOP_GAS.MBL (SSTVD)
7,000.0	0.00	0.00	6,952.7	-254.3	731.8	774.7	0.00	0.00	
7,100.0	0.00	0.00	7,052.7	-254.3	731.8	774.7	0.00	0.00	
7,200.0	0.00	0.00	7,152.7	-254.3	731.8	774.7	0.00	0.00	
7,300.0	0.00	0.00	7,252.7	-254.3	731.8	774.7	0.00	0.00	
7,400.0	0.00	0.00	7,352.7	-254.3	731.8	774.7	0.00	0.00	
7,500.0	0.00	0.00	7,452.7	-254.3	731.8	774.7	0.00	0.00	
7,600.0	0.00	0.00	7,552.7	-254.3	731.8	774.7	0.00	0.00	
7,700.0	0.00	0.00	7,652.7	-254.3	731.8	774.7	0.00	0.00	
7,800.0	0.00	0.00	7,752.7	-254.3	731.8	774.7	0.00	0.00	
7,900.0	0.00	0.00	7,852.7	-254.3	731.8	774.7	0.00	0.00	
8,000.0	0.00	0.00	7,952.7	-254.3	731.8	774.7	0.00	0.00	
8,100.0	0.00	0.00	8,052.7	-254.3	731.8	774.7	0.00	0.00	
8,200.0	0.00	0.00	8,152.7	-254.3	731.8	774.7	0.00	0.00	
8,300.0	0.00	0.00	8,252.7	-254.3	731.8	774.7	0.00	0.00	
8,400.0	0.00	0.00	8,352.7	-254.3	731.8	774.7	0.00	0.00	
8,500.0	0.00	0.00	8,452.7	-254.3	731.8	774.7	0.00	0.00	
8,600.0	0.00	0.00	8,552.7	-254.3	731.8	774.7	0.00	0.00	
8,697.9	0.00	0.00	8,650.6	-254.3	731.8	774.7	0.00	0.00	ROLLINS.MBL (SSTVD)
8,700.0	0.00	0.00	8,652.7	-254.3	731.8	774.7	0.00	0.00	
8,800.0	0.00	0.00	8,752.7	-254.3	731.8	774.7	0.00	0.00	
8,847.9	0.00	0.00	8,800.6	-254.3	731.8	774.7	0.00	0.00	TD at 8847.9 - TD.MBL (SSTVD)

## Planning Report

<b>Database:</b>	USA EDM 5000 Multi Users DB	<b>Local Co-ordinate Reference:</b>	Well PUCKETT 23A-1
<b>Company:</b>	Caerus Oil & Gas	<b>TVD Reference:</b>	30' KB @ 8358.6usft (H&P 330)
<b>Project:</b>	Garfield County, CO (UTM 12N)	<b>MD Reference:</b>	30' KB @ 8358.6usft (H&P 330)
<b>Site:</b>	S1-T7S-R97W (MESA E1-797)	<b>North Reference:</b>	True
<b>Well:</b>	PUCKETT 23A-1	<b>Survey Calculation Method:</b>	Minimum Curvature
<b>Wellbore:</b>	OH		
<b>Design:</b>	PLAN #2		

Targets									
Target Name									
- hit/miss target	Dip Angle	Dip Dir.	TVD	+N/-S	+E/-W	Northing	Easting	Latitude	Longitude
- Shape	(°)	(°)	(usft)	(usft)	(usft)	(usft)	(usft)		
PUCKETT 23A-1 PBHL	0.00	0.00	8,800.6	-254.3	731.8	14,347,542.30	2,439,058.70	39.475316	-108.170065
- plan hits target center									
- Circle (radius 50.0)									

Formations						
Measured Depth	Vertical Depth	Name	Lithology	Dip	Dip Direction	
(usft)	(usft)			(°)	(°)	
4,347.8	4,317.6	WASATCH_G_ZONE.MBL (SSTVD)		0.00		
4,656.2	4,623.6	FORT_UNION.MBL (SSTVD)		0.00		
5,899.7	5,857.6	OHIO_CREEK.MBL (SSTVD)		0.00		
6,075.1	6,031.6	WILLIAMS_FORK.MBL (SSTVD)		0.00		
6,903.9	6,856.6	TOP_GAS.MBL (SSTVD)		0.00		
8,697.9	8,650.6	ROLLINS.MBL (SSTVD)		0.00		
8,847.9	8,800.6	TD.MBL (SSTVD)		0.00		

Plan Annotations					
Measured Depth	Vertical Depth	Local Coordinates			
(usft)	(usft)	+N/-S	+E/-W	Comment	
(usft)	(usft)	(usft)	(usft)		
200.0	200.0	0.0	0.0	KOP @ 200' MD	
556.1	555.2	-7.3	20.9	EOB; INC=7.12°	
6,447.8	6,401.4	-247.0	710.9	Start Drop -2.00	
6,803.9	6,756.6	-254.3	731.8	EOD; INC=0°	
8,847.9	8,800.6	-254.3	731.8	TD at 8847.9	