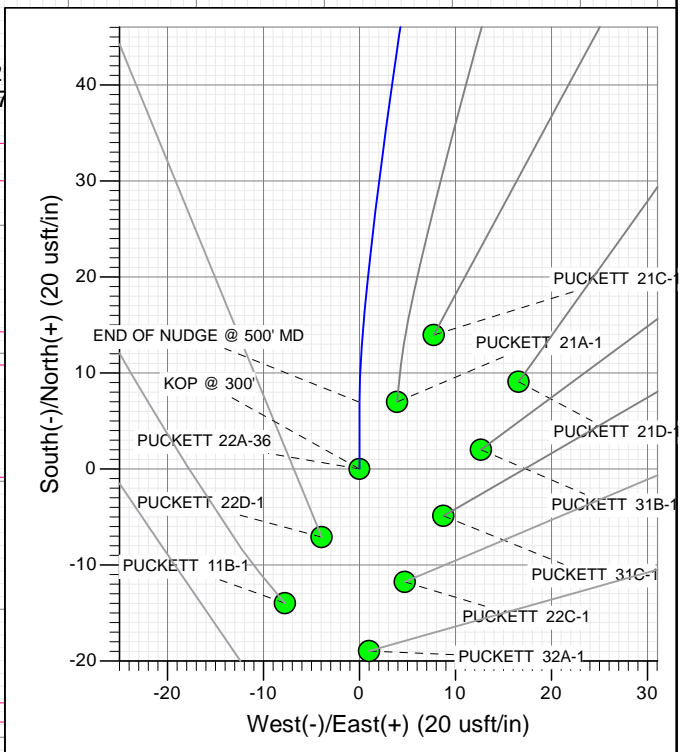
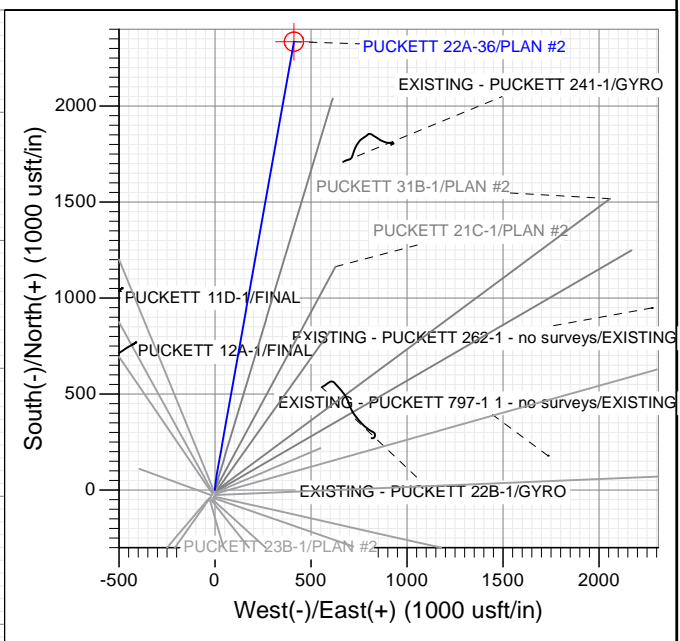
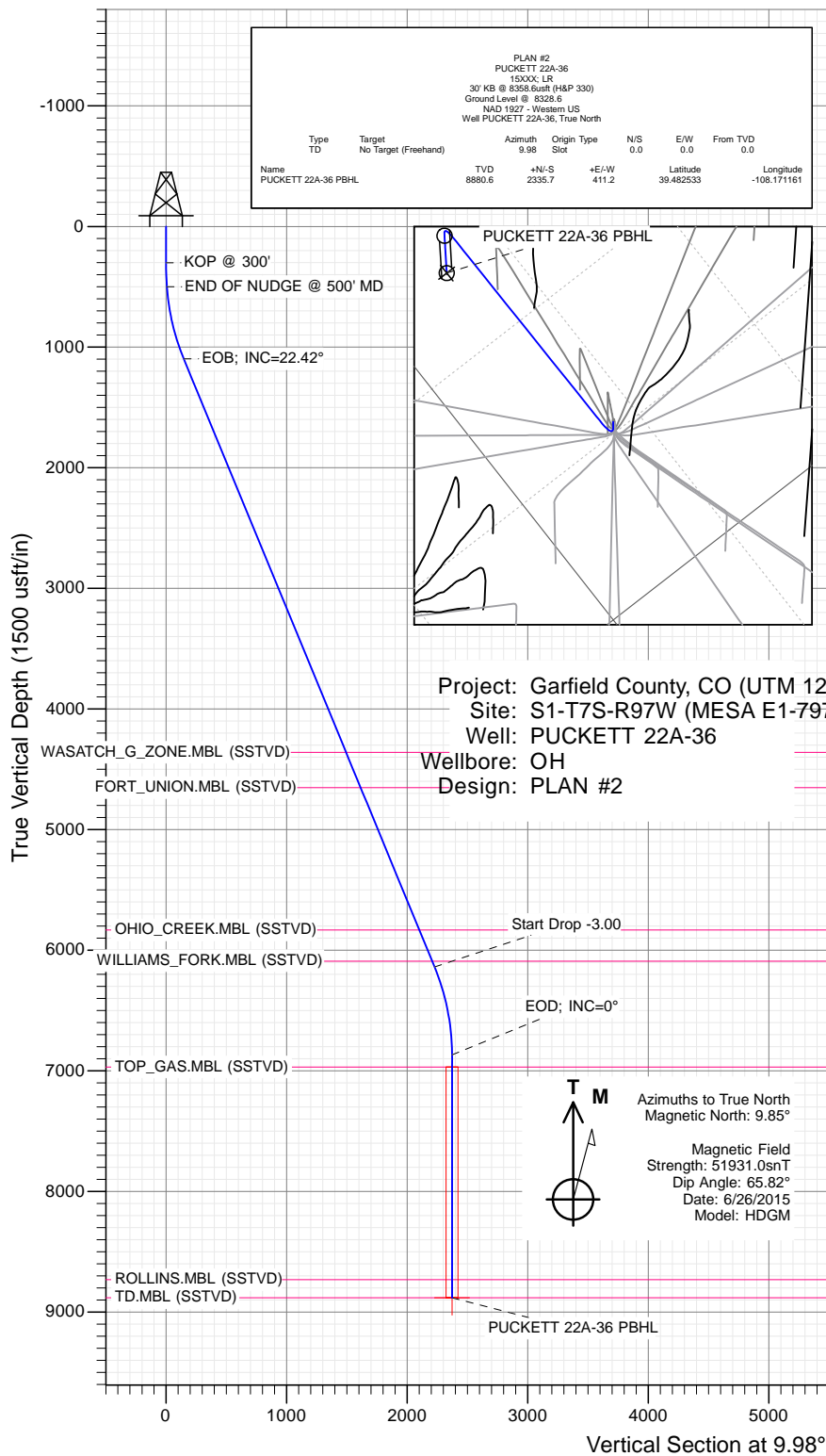




# SECTION DETAILS

Sec	MD	Inc	Azi	TVD	+N/-S	+E/-W	Dleg	TFace	VSeet	Target	Annotation
1	0.0	0.00	0.00	0.0	0.0	0.0	0.00	0.00	0.0		
2	300.0	0.00	0.00	300.0	0.0	0.0	0.00	0.00	0.0		KOP @ 300'
3	500.0	4.00	0.00	499.8	7.0	0.0	2.00	0.00	6.9		END OF NUDDGE @ 500' MD
4	1116.6	22.42	10.11	1097.6	145.5	20.8	3.00	12.18	146.9		EOB; INC=22.42°
5	6570.5	22.42	10.11	6139.1	2193.6	385.9	0.00	0.00	2227.3		Start Drop -3.00
6	7317.9	0.00	0.00	6867.6	2335.7	411.2	3.00	180.00	2371.7		EOD; INC=0°
7	9330.9	0.00	0.00	8880.6	2335.7	411.2	0.00	0.00	2371.7	PUCKETT 22A-36 PBHL	TD at 9330.9



## WELL DETAILS: PUCKETT 22A-36

+N/-S	+E/-W	Northing	Ground Level:	8328.6	Latitude	Longitude
0.0	0.0	14347813.50	Easting	2438328.90	39.476123	-108.172618



## Planning Report

<b>Database:</b>	USA EDM 5000 Multi Users DB	<b>Local Co-ordinate Reference:</b>	Well PUCKETT 22A-36
<b>Company:</b>	Caerus Oil & Gas	<b>TVD Reference:</b>	30' KB @ 8358.6usft (H&P 330)
<b>Project:</b>	Garfield County, CO (UTM 12N)	<b>MD Reference:</b>	30' KB @ 8358.6usft (H&P 330)
<b>Site:</b>	S1-T7S-R97W (MESA E1-797)	<b>North Reference:</b>	True
<b>Well:</b>	PUCKETT 22A-36	<b>Survey Calculation Method:</b>	Minimum Curvature
<b>Wellbore:</b>	OH		
<b>Design:</b>	PLAN #2		

<b>Project</b>	Garfield County, CO (UTM 12N)		
<b>Map System:</b>	Universal Transverse Mercator (US Survey Feet)	<b>System Datum:</b>	Mean Sea Level
<b>Geo Datum:</b>	NAD 1927 - Western US		
<b>Map Zone:</b>	Zone 12N (114 W to 108 W)		

Site		S1-T7S-R97W (MESA E1-797)			
Site Position:		Northing:	14,347,813.50 usft	Latitude:	39.476123
From:	Map	Easting:	2,438,328.90 usft	Longitude:	-108.172618
Position Uncertainty:	0.0 usft	Slot Radius:	13-3/16 "	Grid Convergence:	1.80 °

Well	PUCKETT 22A-36					
Well Position	+N/-S	0.0 usft	Northing:	14,347,813.50 usft	Latitude:	39.476123
	+E/-W	0.0 usft	Easting:	2,438,328.90 usft	Longitude:	-108.172618
Position Uncertainty		0.0 usft	Wellhead Elevation:	0.0 usft	Ground Level:	8,328.6 usft

<b>Wellbore</b>	OH				
<b>Magnetics</b>	<b>Model Name</b>	<b>Sample Date</b>	<b>Declination (°)</b>	<b>Dip Angle (°)</b>	<b>Field Strength (nT)</b>
	HDGM	6/26/2015	9.85	65.82	51,931

<b>Design</b>	PLAN #2			
<b>Audit Notes:</b>				
<b>Version:</b>	<b>Phase:</b>	PLAN	<b>Tie On Depth:</b>	0.0
<b>Vertical Section:</b>	<b>Depth From (TVD) (usft)</b>	<b>+N/-S (usft)</b>	<b>+E/-W (usft)</b>	<b>Direction (°)</b>
	0.0	0.0	0.0	9.98

<b>Plan Sections</b>										
Measured Depth (usft)	Inclination (°)	Azimuth (°)	Vertical Depth (usft)	+N/-S (usft)	+E/-W (usft)	Dogleg Rate (°/100usft)	Build Rate (°/100usft)	Turn Rate (°/100usft)	TFO (°)	Target
0.0	0.00	0.00	0.0	0.0	0.0	0.00	0.00	0.00	0.00	
300.0	0.00	0.00	300.0	0.0	0.0	0.00	0.00	0.00	0.00	
500.0	4.00	0.00	499.8	7.0	0.0	2.00	2.00	0.00	0.00	
1,116.6	22.42	10.11	1,097.6	145.5	20.8	3.00	2.99	1.64	12.18	
6,570.5	22.42	10.11	6,139.1	2,193.6	385.9	0.00	0.00	0.00	0.00	
7,317.9	0.00	0.00	6,867.6	2,335.7	411.2	3.00	-3.00	0.00	180.00	
9,330.9	0.00	0.00	8,880.6	2,335.7	411.2	0.00	0.00	0.00	0.00	PUCKETT 22A-36 PE

# Planning Report

<b>Database:</b>	USA EDM 5000 Multi Users DB	<b>Local Co-ordinate Reference:</b>	Well PUCKETT 22A-36
<b>Company:</b>	Caerus Oil & Gas	<b>TVD Reference:</b>	30' KB @ 8358.6usft (H&P 330)
<b>Project:</b>	Garfield County, CO (UTM 12N)	<b>MD Reference:</b>	30' KB @ 8358.6usft (H&P 330)
<b>Site:</b>	S1-T7S-R97W (MESA E1-797)	<b>North Reference:</b>	True
<b>Well:</b>	PUCKETT 22A-36	<b>Survey Calculation Method:</b>	Minimum Curvature
<b>Wellbore:</b>	OH		
<b>Design:</b>	PLAN #2		

Planned Survey									
Measured Depth (usft)	Inclination (°)	Azimuth (°)	Vertical Depth (usft)	+N/-S (usft)	+E/-W (usft)	Vertical Section (usft)	Dogleg Rate (°/100usft)	Build Rate (°/100u)	Comments / Formations
0.0	0.00	0.00	0.0	0.0	0.0	0.0	0.00	0.00	
100.0	0.00	0.00	100.0	0.0	0.0	0.0	0.00	0.00	
200.0	0.00	0.00	200.0	0.0	0.0	0.0	0.00	0.00	
300.0	0.00	0.00	300.0	0.0	0.0	0.0	0.00	0.00	KOP @ 300'
400.0	2.00	0.00	400.0	1.7	0.0	1.7	2.00	2.00	
500.0	4.00	0.00	499.8	7.0	0.0	6.9	2.00	2.00	END OF NUDGE @ 500' MD
600.0	6.96	5.23	599.4	16.5	0.6	16.3	3.00	2.96	
700.0	9.95	7.34	698.3	31.1	2.2	31.0	3.00	2.98	
800.0	12.94	8.48	796.3	50.7	5.0	50.8	3.00	2.99	
900.0	15.93	9.19	893.1	75.4	8.8	75.8	3.00	2.99	
1,000.0	18.93	9.69	988.5	104.9	13.7	105.7	3.00	3.00	
1,100.0	21.93	10.05	1,082.2	139.3	19.7	140.6	3.00	3.00	
1,116.6	22.42	10.11	1,097.6	145.5	20.8	146.9	3.00	3.00	EOB; INC=22.42°
1,200.0	22.42	10.11	1,174.7	176.8	26.4	178.7	0.00	0.00	
1,300.0	22.42	10.11	1,267.1	214.3	33.1	216.8	0.00	0.00	
1,400.0	22.42	10.11	1,359.5	251.9	39.8	255.0	0.00	0.00	
1,500.0	22.42	10.11	1,452.0	289.4	46.5	293.1	0.00	0.00	
1,600.0	22.42	10.11	1,544.4	327.0	53.2	331.3	0.00	0.00	
1,700.0	22.42	10.11	1,636.9	364.6	59.9	369.4	0.00	0.00	
1,800.0	22.42	10.11	1,729.3	402.1	66.6	407.6	0.00	0.00	
1,900.0	22.42	10.11	1,821.7	439.7	73.3	445.7	0.00	0.00	
2,000.0	22.42	10.11	1,914.2	477.2	79.9	483.8	0.00	0.00	
2,100.0	22.42	10.11	2,006.6	514.8	86.6	522.0	0.00	0.00	
2,200.0	22.42	10.11	2,099.1	552.3	93.3	560.1	0.00	0.00	
2,300.0	22.42	10.11	2,191.5	589.9	100.0	598.3	0.00	0.00	
2,400.0	22.42	10.11	2,283.9	627.4	106.7	636.4	0.00	0.00	
2,500.0	22.42	10.11	2,376.4	665.0	113.4	674.6	0.00	0.00	
2,600.0	22.42	10.11	2,468.8	702.5	120.1	712.7	0.00	0.00	
2,700.0	22.42	10.11	2,561.3	740.1	126.8	750.9	0.00	0.00	
2,800.0	22.42	10.11	2,653.7	777.6	133.5	789.0	0.00	0.00	
2,900.0	22.42	10.11	2,746.1	815.2	140.2	827.2	0.00	0.00	
3,000.0	22.42	10.11	2,838.6	852.7	146.9	865.3	0.00	0.00	
3,100.0	22.42	10.11	2,931.0	890.3	153.6	903.4	0.00	0.00	
3,200.0	22.42	10.11	3,023.4	927.9	160.3	941.6	0.00	0.00	
3,300.0	22.42	10.11	3,115.9	965.4	167.0	979.7	0.00	0.00	
3,400.0	22.42	10.11	3,208.3	1,003.0	173.7	1,017.9	0.00	0.00	
3,500.0	22.42	10.11	3,300.8	1,040.5	180.3	1,056.0	0.00	0.00	
3,600.0	22.42	10.11	3,393.2	1,078.1	187.0	1,094.2	0.00	0.00	
3,700.0	22.42	10.11	3,485.6	1,115.6	193.7	1,132.3	0.00	0.00	
3,800.0	22.42	10.11	3,578.1	1,153.2	200.4	1,170.5	0.00	0.00	
3,900.0	22.42	10.11	3,670.5	1,190.7	207.1	1,208.6	0.00	0.00	
4,000.0	22.42	10.11	3,763.0	1,228.3	213.8	1,246.7	0.00	0.00	
4,100.0	22.42	10.11	3,855.4	1,265.8	220.5	1,284.9	0.00	0.00	
4,200.0	22.42	10.11	3,947.8	1,303.4	227.2	1,323.0	0.00	0.00	
4,300.0	22.42	10.11	4,040.3	1,340.9	233.9	1,361.2	0.00	0.00	
4,400.0	22.42	10.11	4,132.7	1,378.5	240.6	1,399.3	0.00	0.00	
4,500.0	22.42	10.11	4,225.2	1,416.0	247.3	1,437.5	0.00	0.00	
4,600.0	22.42	10.11	4,317.6	1,453.6	254.0	1,475.6	0.00	0.00	
4,645.4	22.42	10.11	4,359.6	1,470.7	257.0	1,493.0	0.00	0.00	WASATCH_G_ZONE.MBL (SSTVD)
4,700.0	22.42	10.11	4,410.0	1,491.2	260.7	1,513.8	0.00	0.00	
4,800.0	22.42	10.11	4,502.5	1,528.7	267.4	1,551.9	0.00	0.00	
4,900.0	22.42	10.11	4,594.9	1,566.3	274.1	1,590.1	0.00	0.00	

# Planning Report

<b>Database:</b>	USA EDM 5000 Multi Users DB	<b>Local Co-ordinate Reference:</b>	Well PUCKETT 22A-36
<b>Company:</b>	Caerus Oil & Gas	<b>TVD Reference:</b>	30' KB @ 8358.6usft (H&P 330)
<b>Project:</b>	Garfield County, CO (UTM 12N)	<b>MD Reference:</b>	30' KB @ 8358.6usft (H&P 330)
<b>Site:</b>	S1-T7S-R97W (MESA E1-797)	<b>North Reference:</b>	True
<b>Well:</b>	PUCKETT 22A-36	<b>Survey Calculation Method:</b>	Minimum Curvature
<b>Wellbore:</b>	OH		
<b>Design:</b>	PLAN #2		

Planned Survey									
Measured Depth (usft)	Inclination (°)	Azimuth (°)	Vertical Depth (usft)	+N/-S (usft)	+E/-W (usft)	Vertical Section (usft)	Dogleg Rate (°/100usft)	Build Rate (°/100u)	Comments / Formations
4,962.4	22.42	10.11	4,652.6	1,589.7	278.2	1,613.9	0.00	0.00	FORT_UNION.MBL (SSTVD)
5,000.0	22.42	10.11	4,687.3	1,603.8	280.8	1,628.2	0.00	0.00	
5,100.0	22.42	10.11	4,779.8	1,641.4	287.4	1,666.3	0.00	0.00	
5,200.0	22.42	10.11	4,872.2	1,678.9	294.1	1,704.5	0.00	0.00	
5,300.0	22.42	10.11	4,964.7	1,716.5	300.8	1,742.6	0.00	0.00	
5,400.0	22.42	10.11	5,057.1	1,754.0	307.5	1,780.8	0.00	0.00	
5,500.0	22.42	10.11	5,149.5	1,791.6	314.2	1,818.9	0.00	0.00	
5,600.0	22.42	10.11	5,242.0	1,829.1	320.9	1,857.1	0.00	0.00	
5,700.0	22.42	10.11	5,334.4	1,866.7	327.6	1,895.2	0.00	0.00	
5,800.0	22.42	10.11	5,426.9	1,904.2	334.3	1,933.4	0.00	0.00	
5,900.0	22.42	10.11	5,519.3	1,941.8	341.0	1,971.5	0.00	0.00	
6,000.0	22.42	10.11	5,611.7	1,979.3	347.7	2,009.6	0.00	0.00	
6,100.0	22.42	10.11	5,704.2	2,016.9	354.4	2,047.8	0.00	0.00	
6,200.0	22.42	10.11	5,796.6	2,054.5	361.1	2,085.9	0.00	0.00	
6,238.9	22.42	10.11	5,832.6	2,069.1	363.7	2,100.8	0.00	0.00	
6,300.0	22.42	10.11	5,889.1	2,092.0	367.8	2,124.1	0.00	0.00	OHIO_CREEK.MBL (SSTVD)
6,400.0	22.42	10.11	5,981.5	2,129.6	374.5	2,162.2	0.00	0.00	
6,500.0	22.42	10.11	6,073.9	2,167.1	381.2	2,200.4	0.00	0.00	
6,518.0	22.42	10.11	6,090.6	2,173.9	382.4	2,207.3	0.00	0.00	WILLIAMS_FORK.MBL (SSTVD)
6,570.5	22.42	10.11	6,139.1	2,193.6	385.9	2,227.3	0.00	0.00	
6,600.0	21.54	10.11	6,166.5	2,204.5	387.8	2,238.3	3.00	-3.00	
6,700.0	18.54	10.11	6,260.4	2,238.2	393.8	2,272.6	3.00	-3.00	
6,800.0	15.54	10.11	6,356.0	2,267.0	399.0	2,301.9	3.00	-3.00	
6,900.0	12.54	10.11	6,453.0	2,290.9	403.2	2,326.1	3.00	-3.00	
7,000.0	9.54	10.11	6,551.1	2,309.8	406.6	2,345.3	3.00	-3.00	
7,100.0	6.54	10.11	6,650.1	2,323.5	409.0	2,359.2	3.00	-3.00	
7,200.0	3.54	10.11	6,749.7	2,332.2	410.6	2,368.0	3.00	-3.00	
7,300.0	0.54	10.11	6,849.7	2,335.7	411.2	2,371.6	3.00	-3.00	
7,317.9	0.00	0.00	6,867.6	2,335.7	411.2	2,371.7	3.00	-3.00	
7,400.0	0.00	0.00	6,949.7	2,335.7	411.2	2,371.7	0.00	0.00	
7,417.9	0.00	0.00	6,967.6	2,335.7	411.2	2,371.7	0.00	0.00	TOP_GAS.MBL (SSTVD)
7,500.0	0.00	0.00	7,049.7	2,335.7	411.2	2,371.7	0.00	0.00	
7,600.0	0.00	0.00	7,149.7	2,335.7	411.2	2,371.7	0.00	0.00	
7,700.0	0.00	0.00	7,249.7	2,335.7	411.2	2,371.7	0.00	0.00	
7,800.0	0.00	0.00	7,349.7	2,335.7	411.2	2,371.7	0.00	0.00	
7,900.0	0.00	0.00	7,449.7	2,335.7	411.2	2,371.7	0.00	0.00	
8,000.0	0.00	0.00	7,549.7	2,335.7	411.2	2,371.7	0.00	0.00	
8,100.0	0.00	0.00	7,649.7	2,335.7	411.2	2,371.7	0.00	0.00	
8,200.0	0.00	0.00	7,749.7	2,335.7	411.2	2,371.7	0.00	0.00	
8,300.0	0.00	0.00	7,849.7	2,335.7	411.2	2,371.7	0.00	0.00	
8,400.0	0.00	0.00	7,949.7	2,335.7	411.2	2,371.7	0.00	0.00	
8,500.0	0.00	0.00	8,049.7	2,335.7	411.2	2,371.7	0.00	0.00	
8,600.0	0.00	0.00	8,149.7	2,335.7	411.2	2,371.7	0.00	0.00	
8,700.0	0.00	0.00	8,249.7	2,335.7	411.2	2,371.7	0.00	0.00	
8,800.0	0.00	0.00	8,349.7	2,335.7	411.2	2,371.7	0.00	0.00	
8,900.0	0.00	0.00	8,449.7	2,335.7	411.2	2,371.7	0.00	0.00	
9,000.0	0.00	0.00	8,549.7	2,335.7	411.2	2,371.7	0.00	0.00	
9,100.0	0.00	0.00	8,649.7	2,335.7	411.2	2,371.7	0.00	0.00	
9,180.9	0.00	0.00	8,730.6	2,335.7	411.2	2,371.7	0.00	0.00	ROLLINS.MBL (SSTVD)
9,200.0	0.00	0.00	8,749.7	2,335.7	411.2	2,371.7	0.00	0.00	
9,300.0	0.00	0.00	8,849.7	2,335.7	411.2	2,371.7	0.00	0.00	
9,330.9	0.00	0.00	8,880.6	2,335.7	411.2	2,371.7	0.00	0.00	TD at 9330.9 - TD.MBL (SSTVD) - PUCKETT 2

## Planning Report

<b>Database:</b>	USA EDM 5000 Multi Users DB	<b>Local Co-ordinate Reference:</b>	Well PUCKETT 22A-36
<b>Company:</b>	Caerus Oil & Gas	<b>TVD Reference:</b>	30' KB @ 8358.6usft (H&P 330)
<b>Project:</b>	Garfield County, CO (UTM 12N)	<b>MD Reference:</b>	30' KB @ 8358.6usft (H&P 330)
<b>Site:</b>	S1-T7S-R97W (MESA E1-797)	<b>North Reference:</b>	True
<b>Well:</b>	PUCKETT 22A-36	<b>Survey Calculation Method:</b>	Minimum Curvature
<b>Wellbore:</b>	OH		
<b>Design:</b>	PLAN #2		

### Targets

#### Target Name

- hit/miss target - Shape	Dip Angle (°)	Dip Dir. (°)	TVD (usft)	+N/-S (usft)	+E/-W (usft)	Northing (usft)	Easting (usft)	Latitude	Longitude
PUCKETT 22A-36 PBHL - plan hits target center - Circle (radius 50.0)	0.00	0.00	8,880.6	2,335.7	411.2	14,350,161.00	2,438,666.60	39.482533	-108.171161

### Formations

Measured Depth (usft)	Vertical Depth (usft)	Name	Lithology	Dip (°)	Dip Direction (°)
4,645.4	4,359.6	WASATCH_G_ZONE.MBL (SSTVD)		0.00	
4,962.4	4,652.6	FORT_UNION.MBL (SSTVD)		0.00	
6,238.9	5,832.6	OHIO_CREEK.MBL (SSTVD)		0.00	
6,518.0	6,090.6	WILLIAMS_FORK.MBL (SSTVD)		0.00	
7,417.9	6,967.6	TOP_GAS.MBL (SSTVD)		0.00	
9,180.9	8,730.6	ROLLINS.MBL (SSTVD)		0.00	
9,330.9	8,880.6	TD.MBL (SSTVD)		0.00	

### Plan Annotations

Measured Depth (usft)	Vertical Depth (usft)	Local Coordinates		Comment
		+N/-S (usft)	+E/-W (usft)	
300.0	300.0	0.0	0.0	KOP @ 300'
500.0	499.8	7.0	0.0	END OF NUDGE @ 500' MD
1,116.6	1,097.6	145.5	20.8	EOB; INC=22.42°
6,570.5	6,139.1	2,193.6	385.9	Start Drop -3.00
7,317.9	6,867.6	2,335.7	411.2	EOD; INC=0°
9,330.9	8,880.6	2,335.7	411.2	TD at 9330.9