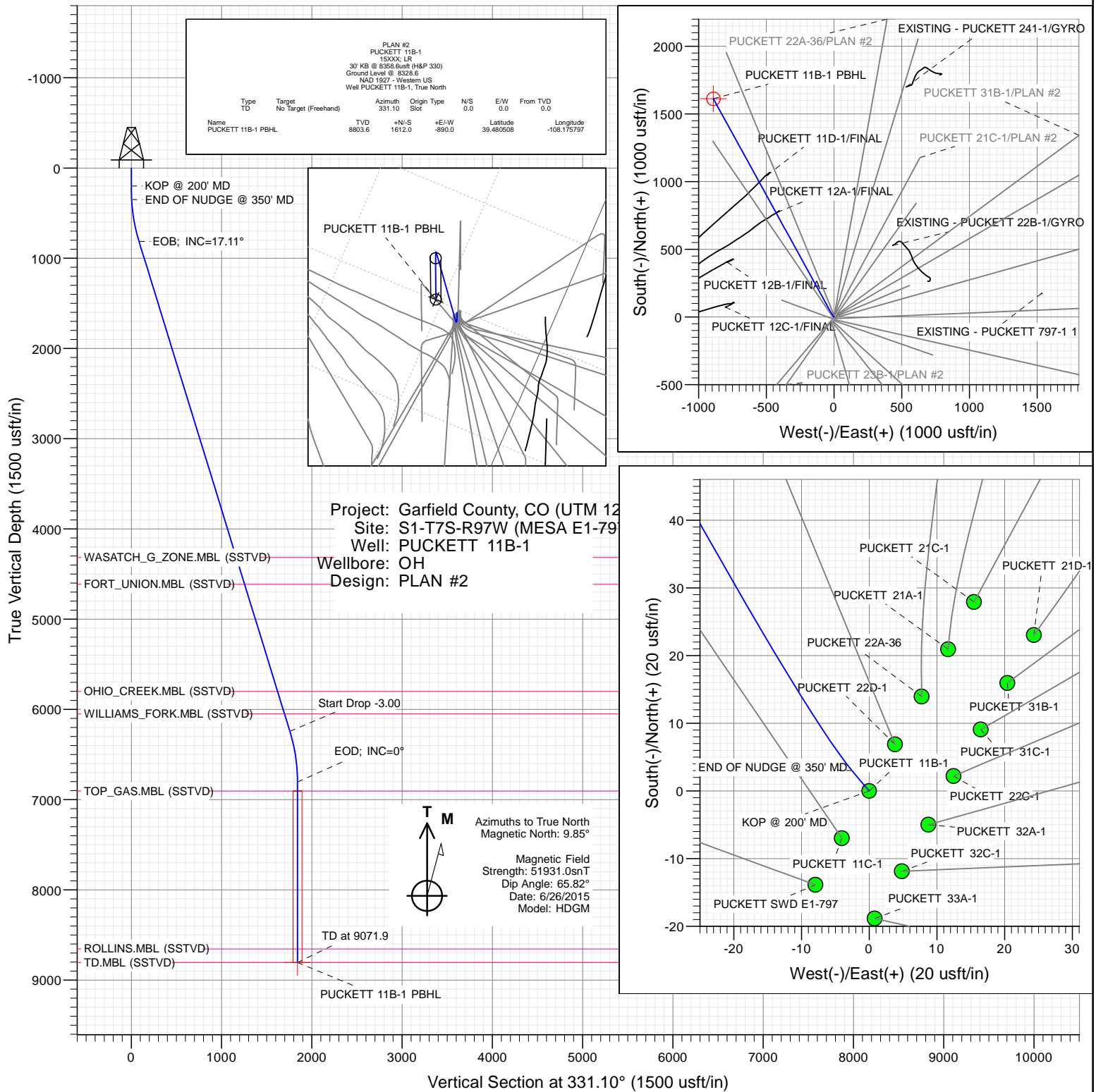




SECTION DETAILS

Sec	MD	Inc	Azi	TVD	+N/-S	+E/-W	Dleg	TFace	VSec	Target	Annotation
1	0.0	0.00	0.00	0.0	0.0	0.0	0.00	0.00	0.0		
2	200.0	0.00	0.00	200.0	0.0	0.0	0.00	0.00	0.0		KOP @ 200' MD
3	350.0	3.00	320.00	349.9	3.0	-2.5	2.00	320.00	3.9		END OF NUDGE @ 350' MD
4	822.6	17.11	331.19	814.1	73.8	-44.2	3.00	13.48	85.9		EOB; INC=17.11°
5	6502.6	17.11	331.19	6242.7	1538.0	-849.3	0.00	0.00	1756.9		Start Drop -3.00
6	7072.9	0.00	0.00	6804.6	1612.0	-890.0	3.00	180.00	1841.4		EOD; INC=0°
7	9071.9	0.00	0.00	8803.6	1612.0	-890.0	0.00	0.00	1841.4	PUCKETT 11B-1 PBHL	TD at 9071.9



WELL DETAILS: PUCKETT 11B-1

+N/-S	+E/-W	Northing	Ground Level:	8328.6	Latitude	Longitude
0.0	0.0	14347799.30	Easting	2438321.60	39.476084	-108.172645

CATHEDRAL



Planning Report

Database:	USA EDM 5000 Multi Users DB	Local Co-ordinate Reference:	Well PUCKETT 11B-1
Company:	Caerus Oil & Gas	TVD Reference:	30' KB @ 8358.6usft (H&P 330)
Project:	Garfield County, CO (UTM 12N)	MD Reference:	30' KB @ 8358.6usft (H&P 330)
Site:	S1-T7S-R97W (MESA E1-797)	North Reference:	True
Well:	PUCKETT 11B-1	Survey Calculation Method:	Minimum Curvature
Wellbore:	OH		
Design:	PLAN #2		

Project	Garfield County, CO (UTM 12N)		
Map System:	Universal Transverse Mercator (US Survey Feet)	System Datum:	Mean Sea Level
Geo Datum:	NAD 1927 - Western US		
Map Zone:	Zone 12N (114 W to 108 W)		

Site		S1-T7S-R97W (MESA E1-797)			
Site Position:		Northing:	14,347,813.50 usft	Latitude:	39.476123
From:	Map	Easting:	2,438,328.90 usft	Longitude:	-108.172618
Position Uncertainty:	0.0 usft	Slot Radius:	13-3/16 "	Grid Convergence:	1.80 °

Well	PUCKETT 11B-1					
Well Position	+N/-S	0.0 usft	Northing:	14,347,799.30 usft	Latitude:	39.476084
	+E/-W	0.0 usft	Easting:	2,438,321.60 usft	Longitude:	-108.172645
Position Uncertainty		0.0 usft	Wellhead Elevation:	0.0 usft	Ground Level:	8,328.6 usft

Wellbore	OH				
Magnetics	Model Name	Sample Date	Declination (°)	Dip Angle (°)	Field Strength (nT)
	HDGM	6/26/2015	9.85	65.82	51,931

Design	PLAN #2			
Audit Notes:				
Version:	Phase:	PLAN	Tie On Depth:	0.0
Vertical Section:	Depth From (TVD) (usft)	+N/-S (usft)	+E/-W (usft)	Direction (°)
	0.0	0.0	0.0	331.10

Plan Sections										
Measured Depth (usft)	Inclination (°)	Azimuth (°)	Vertical Depth (usft)	+N/-S (usft)	+E/-W (usft)	Dogleg Rate (°/100usft)	Build Rate (°/100usft)	Turn Rate (°/100usft)	TFO (°)	Target
0.0	0.00	0.00	0.0	0.0	0.0	0.00	0.00	0.00	0.00	
200.0	0.00	0.00	200.0	0.0	0.0	0.00	0.00	0.00	0.00	
350.0	3.00	320.00	349.9	3.0	-2.5	2.00	2.00	0.00	320.00	
822.6	17.11	331.19	814.1	73.8	-44.2	3.00	2.99	2.37	13.48	
6,502.6	17.11	331.19	6,242.7	1,538.0	-849.3	0.00	0.00	0.00	0.00	
7,072.9	0.00	0.00	6,804.6	1,612.0	-890.0	3.00	-3.00	0.00	180.00	
9,071.9	0.00	0.00	8,803.6	1,612.0	-890.0	0.00	0.00	0.00	0.00	PUCKETT 11B-1 PB+

Planning Report

Database:	USA EDM 5000 Multi Users DB	Local Co-ordinate Reference:	Well PUCKETT 11B-1
Company:	Caerus Oil & Gas	TVD Reference:	30' KB @ 8358.6usft (H&P 330)
Project:	Garfield County, CO (UTM 12N)	MD Reference:	30' KB @ 8358.6usft (H&P 330)
Site:	S1-T7S-R97W (MESA E1-797)	North Reference:	True
Well:	PUCKETT 11B-1	Survey Calculation Method:	Minimum Curvature
Wellbore:	OH		
Design:	PLAN #2		

Planned Survey

Measured Depth (usft)	Inclination (°)	Azimuth (°)	Vertical Depth (usft)	+N/-S (usft)	+E/-W (usft)	Vertical Section (usft)	Dogleg Rate (°/100usft)	Build Rate (°/100u)	Comments / Formations
0.0	0.00	0.00	0.0	0.0	0.0	0.0	0.00	0.00	
100.0	0.00	0.00	100.0	0.0	0.0	0.0	0.00	0.00	
200.0	0.00	0.00	200.0	0.0	0.0	0.0	0.00	0.00	KOP @ 200' MD
300.0	2.00	320.00	300.0	1.3	-1.1	1.7	2.00	2.00	
350.0	3.00	320.00	349.9	3.0	-2.5	3.9	2.00	2.00	END OF NUDGE @ 350' MD
400.0	4.47	324.49	399.8	5.6	-4.5	7.1	3.00	2.94	
500.0	7.45	328.11	499.3	14.3	-10.2	17.4	3.00	2.98	
600.0	10.44	329.67	598.0	27.6	-18.2	33.0	3.00	2.99	
700.0	13.44	330.54	695.9	45.5	-28.5	53.6	3.00	2.99	
800.0	16.43	331.10	792.5	68.0	-41.0	79.4	3.00	3.00	
822.6	17.11	331.19	814.1	73.8	-44.2	85.9	3.00	3.00	EOB; INC=17.11°
900.0	17.11	331.19	888.1	93.7	-55.2	108.7	0.00	0.00	
1,000.0	17.11	331.19	983.7	119.5	-69.3	138.1	0.00	0.00	
1,100.0	17.11	331.19	1,079.2	145.3	-83.5	167.5	0.00	0.00	
1,200.0	17.11	331.19	1,174.8	171.0	-97.7	197.0	0.00	0.00	
1,300.0	17.11	331.19	1,270.4	196.8	-111.9	226.4	0.00	0.00	
1,400.0	17.11	331.19	1,366.0	222.6	-126.0	255.8	0.00	0.00	
1,500.0	17.11	331.19	1,461.5	248.4	-140.2	285.2	0.00	0.00	
1,600.0	17.11	331.19	1,557.1	274.2	-154.4	314.6	0.00	0.00	
1,700.0	17.11	331.19	1,652.7	299.9	-168.6	344.0	0.00	0.00	
1,800.0	17.11	331.19	1,748.3	325.7	-182.7	373.5	0.00	0.00	
1,900.0	17.11	331.19	1,843.8	351.5	-196.9	402.9	0.00	0.00	
2,000.0	17.11	331.19	1,939.4	377.3	-211.1	432.3	0.00	0.00	
2,100.0	17.11	331.19	2,035.0	403.1	-225.3	461.7	0.00	0.00	
2,200.0	17.11	331.19	2,130.6	428.8	-239.4	491.1	0.00	0.00	
2,300.0	17.11	331.19	2,226.1	454.6	-253.6	520.6	0.00	0.00	
2,400.0	17.11	331.19	2,321.7	480.4	-267.8	550.0	0.00	0.00	
2,500.0	17.11	331.19	2,417.3	506.2	-282.0	579.4	0.00	0.00	
2,600.0	17.11	331.19	2,512.9	531.9	-296.1	608.8	0.00	0.00	
2,700.0	17.11	331.19	2,608.4	557.7	-310.3	638.2	0.00	0.00	
2,800.0	17.11	331.19	2,704.0	583.5	-324.5	667.7	0.00	0.00	
2,900.0	17.11	331.19	2,799.6	609.3	-338.7	697.1	0.00	0.00	
3,000.0	17.11	331.19	2,895.2	635.1	-352.8	726.5	0.00	0.00	
3,100.0	17.11	331.19	2,990.7	660.8	-367.0	755.9	0.00	0.00	
3,200.0	17.11	331.19	3,086.3	686.6	-381.2	785.3	0.00	0.00	
3,300.0	17.11	331.19	3,181.9	712.4	-395.4	814.7	0.00	0.00	
3,400.0	17.11	331.19	3,277.5	738.2	-409.5	844.2	0.00	0.00	
3,500.0	17.11	331.19	3,373.0	764.0	-423.7	873.6	0.00	0.00	
3,600.0	17.11	331.19	3,468.6	789.7	-437.9	903.0	0.00	0.00	
3,700.0	17.11	331.19	3,564.2	815.5	-452.1	932.4	0.00	0.00	
3,800.0	17.11	331.19	3,659.8	841.3	-466.2	961.8	0.00	0.00	
3,900.0	17.11	331.19	3,755.3	867.1	-480.4	991.3	0.00	0.00	
4,000.0	17.11	331.19	3,850.9	892.8	-494.6	1,020.7	0.00	0.00	
4,100.0	17.11	331.19	3,946.5	918.6	-508.8	1,050.1	0.00	0.00	
4,200.0	17.11	331.19	4,042.1	944.4	-522.9	1,079.5	0.00	0.00	
4,300.0	17.11	331.19	4,137.6	970.2	-537.1	1,108.9	0.00	0.00	
4,400.0	17.11	331.19	4,233.2	996.0	-551.3	1,138.4	0.00	0.00	
4,487.2	17.11	331.19	4,316.6	1,018.4	-563.6	1,164.0	0.00	0.00	WASATCH_G_ZONE.MBL (SSTVD)
4,500.0	17.11	331.19	4,328.8	1,021.7	-565.5	1,167.8	0.00	0.00	
4,600.0	17.11	331.19	4,424.4	1,047.5	-579.6	1,197.2	0.00	0.00	
4,700.0	17.11	331.19	4,519.9	1,073.3	-593.8	1,226.6	0.00	0.00	
4,798.0	17.11	331.19	4,613.6	1,098.6	-607.7	1,255.4	0.00	0.00	FORT_UNION.MBL (SSTVD)

Planning Report

Database:	USA EDM 5000 Multi Users DB	Local Co-ordinate Reference:	Well PUCKETT 11B-1
Company:	Caerus Oil & Gas	TVD Reference:	30' KB @ 8358.6usft (H&P 330)
Project:	Garfield County, CO (UTM 12N)	MD Reference:	30' KB @ 8358.6usft (H&P 330)
Site:	S1-T7S-R97W (MESA E1-797)	North Reference:	True
Well:	PUCKETT 11B-1	Survey Calculation Method:	Minimum Curvature
Wellbore:	OH		
Design:	PLAN #2		

Planned Survey									
Measured Depth (usft)	Inclination (°)	Azimuth (°)	Vertical Depth (usft)	+N/-S (usft)	+E/-W (usft)	Vertical Section (usft)	Dogleg Rate (°/100usft)	Build Rate (°/100u)	Comments / Formations
4,800.0	17.11	331.19	4,615.5	1,099.1	-608.0	1,256.0	0.00	0.00	
4,900.0	17.11	331.19	4,711.1	1,124.9	-622.2	1,285.4	0.00	0.00	
5,000.0	17.11	331.19	4,806.7	1,150.6	-636.3	1,314.9	0.00	0.00	
5,100.0	17.11	331.19	4,902.2	1,176.4	-650.5	1,344.3	0.00	0.00	
5,200.0	17.11	331.19	4,997.8	1,202.2	-664.7	1,373.7	0.00	0.00	
5,300.0	17.11	331.19	5,093.4	1,228.0	-678.9	1,403.1	0.00	0.00	
5,400.0	17.11	331.19	5,189.0	1,253.7	-693.0	1,432.5	0.00	0.00	
5,500.0	17.11	331.19	5,284.5	1,279.5	-707.2	1,462.0	0.00	0.00	
5,600.0	17.11	331.19	5,380.1	1,305.3	-721.4	1,491.4	0.00	0.00	
5,700.0	17.11	331.19	5,475.7	1,331.1	-735.6	1,520.8	0.00	0.00	
5,800.0	17.11	331.19	5,571.3	1,356.9	-749.7	1,550.2	0.00	0.00	
5,900.0	17.11	331.19	5,666.8	1,382.6	-763.9	1,579.6	0.00	0.00	
6,000.0	17.11	331.19	5,762.4	1,408.4	-778.1	1,609.1	0.00	0.00	
6,040.0	17.11	331.19	5,800.6	1,418.7	-783.7	1,620.8	0.00	0.00	OHIO_CREEK.MBL (SSTVD)
6,100.0	17.11	331.19	5,858.0	1,434.2	-792.3	1,638.5	0.00	0.00	
6,200.0	17.11	331.19	5,953.6	1,460.0	-806.4	1,667.9	0.00	0.00	
6,300.0	17.11	331.19	6,049.1	1,485.7	-820.6	1,697.3	0.00	0.00	
6,300.5	17.11	331.19	6,049.6	1,485.9	-820.7	1,697.4	0.00	0.00	WILLIAMS_FORK.MBL (SSTVD)
6,400.0	17.11	331.19	6,144.7	1,511.5	-834.8	1,726.7	0.00	0.00	
6,500.0	17.11	331.19	6,240.3	1,537.3	-849.0	1,756.1	0.00	0.00	
6,502.6	17.11	331.19	6,242.7	1,538.0	-849.3	1,756.9	0.00	0.00	Start Drop -3.00
6,600.0	14.19	331.19	6,336.5	1,561.0	-862.0	1,783.2	3.00	-3.00	
6,700.0	11.19	331.19	6,434.1	1,580.2	-872.6	1,805.1	3.00	-3.00	
6,800.0	8.19	331.19	6,532.7	1,595.0	-880.7	1,822.0	3.00	-3.00	
6,900.0	5.19	331.19	6,632.0	1,605.2	-886.3	1,833.6	3.00	-3.00	
7,000.0	2.19	331.19	6,731.7	1,610.8	-889.4	1,840.0	3.00	-3.00	
7,072.9	0.00	0.00	6,804.6	1,612.0	-890.0	1,841.4	3.00	-3.00	EOD; INC=0°
7,100.0	0.00	0.00	6,831.7	1,612.0	-890.0	1,841.4	0.00	0.00	
7,172.9	0.00	0.00	6,904.6	1,612.0	-890.0	1,841.4	0.00	0.00	TOP_GAS.MBL (SSTVD)
7,200.0	0.00	0.00	6,931.7	1,612.0	-890.0	1,841.4	0.00	0.00	
7,300.0	0.00	0.00	7,031.7	1,612.0	-890.0	1,841.4	0.00	0.00	
7,400.0	0.00	0.00	7,131.7	1,612.0	-890.0	1,841.4	0.00	0.00	
7,500.0	0.00	0.00	7,231.7	1,612.0	-890.0	1,841.4	0.00	0.00	
7,600.0	0.00	0.00	7,331.7	1,612.0	-890.0	1,841.4	0.00	0.00	
7,700.0	0.00	0.00	7,431.7	1,612.0	-890.0	1,841.4	0.00	0.00	
7,800.0	0.00	0.00	7,531.7	1,612.0	-890.0	1,841.4	0.00	0.00	
7,900.0	0.00	0.00	7,631.7	1,612.0	-890.0	1,841.4	0.00	0.00	
8,000.0	0.00	0.00	7,731.7	1,612.0	-890.0	1,841.4	0.00	0.00	
8,100.0	0.00	0.00	7,831.7	1,612.0	-890.0	1,841.4	0.00	0.00	
8,200.0	0.00	0.00	7,931.7	1,612.0	-890.0	1,841.4	0.00	0.00	
8,300.0	0.00	0.00	8,031.7	1,612.0	-890.0	1,841.4	0.00	0.00	
8,400.0	0.00	0.00	8,131.7	1,612.0	-890.0	1,841.4	0.00	0.00	
8,500.0	0.00	0.00	8,231.7	1,612.0	-890.0	1,841.4	0.00	0.00	
8,600.0	0.00	0.00	8,331.7	1,612.0	-890.0	1,841.4	0.00	0.00	
8,700.0	0.00	0.00	8,431.7	1,612.0	-890.0	1,841.4	0.00	0.00	
8,800.0	0.00	0.00	8,531.7	1,612.0	-890.0	1,841.4	0.00	0.00	
8,900.0	0.00	0.00	8,631.7	1,612.0	-890.0	1,841.4	0.00	0.00	
8,921.9	0.00	0.00	8,653.6	1,612.0	-890.0	1,841.4	0.00	0.00	ROLLINS.MBL (SSTVD)
9,000.0	0.00	0.00	8,731.7	1,612.0	-890.0	1,841.4	0.00	0.00	
9,071.9	0.00	0.00	8,803.6	1,612.0	-890.0	1,841.4	0.00	0.00	TD at 9071.9 - TD.MBL (SSTVD)

Planning Report

Database:	USA EDM 5000 Multi Users DB	Local Co-ordinate Reference:	Well PUCKETT 11B-1
Company:	Caerus Oil & Gas	TVD Reference:	30' KB @ 8358.6usft (H&P 330)
Project:	Garfield County, CO (UTM 12N)	MD Reference:	30' KB @ 8358.6usft (H&P 330)
Site:	S1-T7S-R97W (MESA E1-797)	North Reference:	True
Well:	PUCKETT 11B-1	Survey Calculation Method:	Minimum Curvature
Wellbore:	OH		
Design:	PLAN #2		

Targets									
Target Name	Dip Angle	Dip Dir.	TVD	+N/-S	+E/-W	Northing	Easting	Latitude	Longitude
- hit/miss target	(°)	(°)	(usft)	(usft)	(usft)	(usft)	(usft)		
- Shape									
PUCKETT 11B-1 PBHL	0.00	0.00	8,803.6	1,612.0	-890.0	14,349,382.60	2,437,381.40	39.480508	-108.175797
- plan hits target center									
- Circle (radius 50.0)									

Formations						
Measured Depth	Vertical Depth	Name	Lithology	Dip	Dip Direction	
(usft)	(usft)			(°)	(°)	
4,487.2	4,316.6	WASATCH_G_ZONE.MBL (SSTVD)		0.00		
4,798.0	4,613.6	FORT_UNION.MBL (SSTVD)		0.00		
6,040.0	5,800.6	OHIO_CREEK.MBL (SSTVD)		0.00		
6,300.5	6,049.6	WILLIAMS_FORK.MBL (SSTVD)		0.00		
7,172.9	6,904.6	TOP_GAS.MBL (SSTVD)		0.00		
8,921.9	8,653.6	ROLLINS.MBL (SSTVD)		0.00		
9,071.9	8,803.6	TD.MBL (SSTVD)		0.00		

Plan Annotations					
Measured Depth	Vertical Depth	Local Coordinates			
(usft)	(usft)	+N/-S	+E/-W	Comment	
(usft)	(usft)	(usft)	(usft)		
200.0	200.0	0.0	0.0	KOP @ 200' MD	
350.0	349.9	3.0	-2.5	END OF NUDGE @ 350' MD	
822.6	814.1	73.8	-44.2	EOB; INC=17.11°	
6,502.6	6,242.7	1,538.0	-849.3	Start Drop -3.00	
7,072.9	6,804.6	1,612.0	-890.0	EOD; INC=0°	
9,071.9	8,803.6	1,612.0	-890.0	TD at 9071.9	